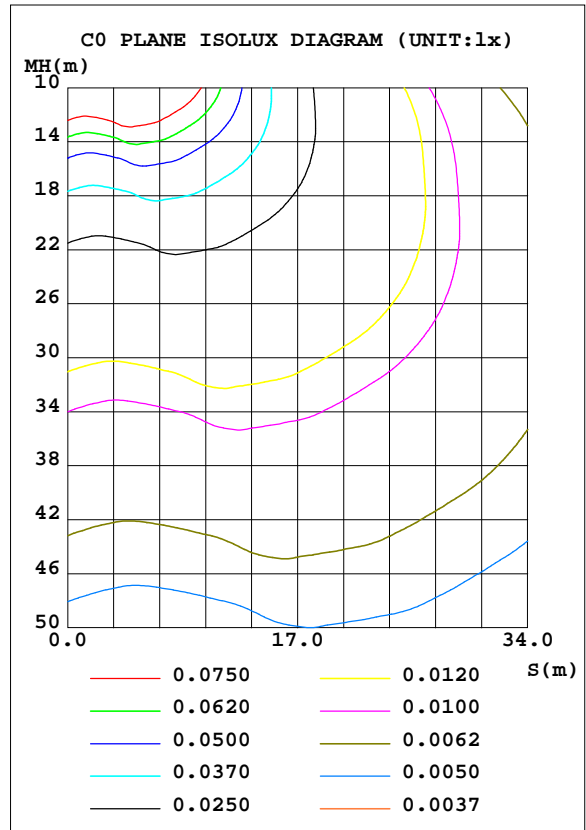
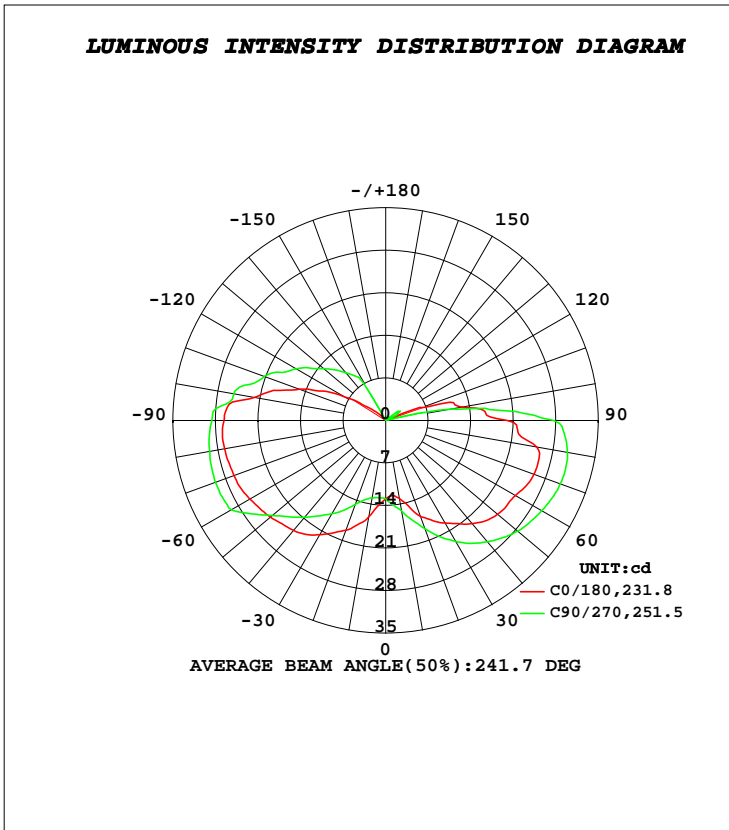


LUMINAIRE PHOTOMETRIC TEST REPORT

Test:U:12.396V I:0.2765A P:2.1433W PF:0.6254 Freq:50.00Hz Lamp Flux:1x1 lm		
Name: LEDSMDG43W	TYPE:LED	WEIGHT:
SPEC.:	DIM.:	SERIAL No.:1
MFR.:	SUR.:	Shielding Angle:

DATA OF LAMP		PHOTOMETRIC DATA Eff: 90.08 lm/W			
MODEL		I _{max} (cd)	34.24	S/MH(C0/180)	2.42
NOMINAL POWER(W)	2	LOR(%)	19307.8	S/MH(C90/270)	2.39
RATED VOLTAGE(V)	12	TOTAL FLUX(lm)	193.08	η UP, DN(C0-180)	1822.9,7665.3
NOMINAL FLUX(lm)	1	CIE CLASS	SEMI-D.	η UP, DN(C180-360)	2603.8,7214.8
LAMPS INSIDE	1	η up(%)	4426.7	CIBSE SHR NOM	2.00
TEST VOLTAGE(V)	12	η down(%)	14881.1	CIBSE SHR MAX	2.00



C Range: 0 - 360DEG
C Interval: 22.5DEG
Test Speed: HIGH
Temperature:15DEG
Operators:
Test Date:2020-11-13

γ Range: 0 - 180DEG
γ Interval: 1.0DEG
Test System:EVERFINE GO-2000A_V1 SYSTEM V2.0.407.13
Humidity:71%
Test Distance:6.700m [K=1.0000]
Remarks:

ZONAL FLUX DIAGRAM

ZONAL FLUX DIAGRAM:

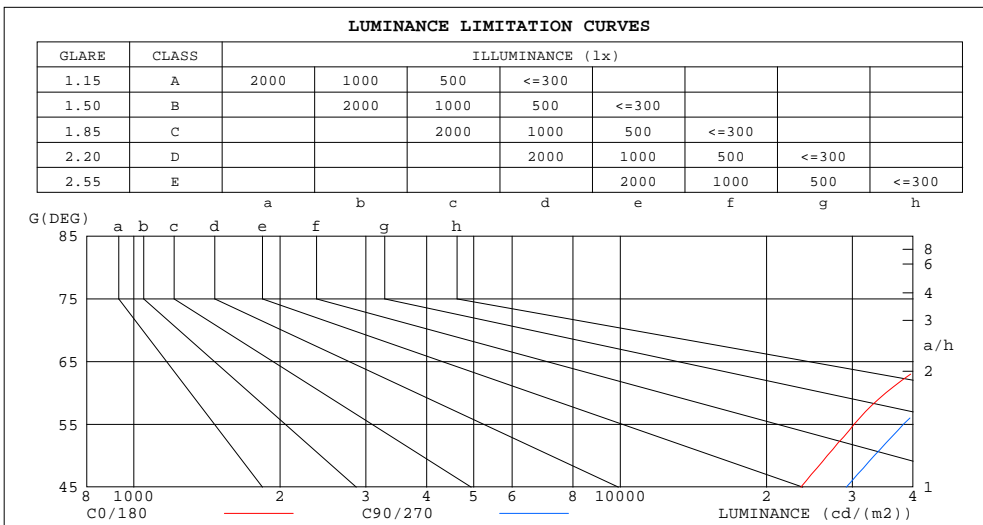
γ	C0	C45	C90	C135	C180	C225	C270	C315	γ	Φ zone	Φ total	%lum,lamp
10	13.08	13.59	15.12	15.74	16.13	15.19	12.95	10.80	0- 10	1.280	1.280	0.66,128
20	16.81	17.16	18.98	18.52	19.22	17.66	14.72	11.18	10- 20	4.270	5.550	2.87,555
30	19.50	21.47	22.97	20.58	21.72	23.01	17.71	13.82	20- 30	8.185	13.737	11,1.37e+003
40	22.18	25.50	26.05	21.78	23.62	27.42	20.81	16.64	30- 40	12.96	26.6913	8,2.67e+003
50	24.04	28.16	28.34	23.37	24.78	29.61	24.34	19.56	40- 50	17.83	44.5323	1,4.45e+003
60	24.67	29.31	29.68	24.30	25.83	30.57	29.39	21.26	50- 60	22.48	67.0134	7,6.7e+003
70	25.98	29.36	30.56	24.78	26.55	30.48	29.83	21.83	60- 70	26.10	93.1148	2,9.31e+003
80	25.27	29.56	30.37	24.63	26.92	29.57	29.42	21.97	70- 80	28.01	121.162	7,1.21e+004
90	20.04	29.63	27.66	21.96	26.62	24.90	28.61	21.23	80- 90	27.69	148.877	1,1.49e+004
100	12.82	27.49	11.19	8.726	21.94	16.42	25.38	17.18	90-100	22.42	171.288	7,1.71e+004
110	6.295	20.49	0.4288	0.4413	15.10	4.250	21.24	12.64	100-110	12.35	183.695	1,1.84e+004
120	0.3740	9.668	2.219	2.108	7.721	0.3855	17.04	6.734	110-120	4.677	188.397	5,1.88e+004
130	0.3215	1.899	1.060	1.893	2.538	0.3056	13.27	2.255	120-130	2.957	191.299	1,1.91e+004
140	0.2553	0.3163	0.2046	0.1860	0.4953	0.2014	10.29	1.666	130-140	1.188	192.499	7,1.92e+004
150	0.2167	0.1808	0.1221	0.1045	0.1782	0.1806	4.818	0.8078	140-150	0.5483	193.099	9,1.93e+004
160	0.1818	0.1459	0.1154	0.0987	0.1572	0.1527	0.1088	0.0987	150-160	0.0826	193.0100	1,1.93e+004
170	0.1223	0.1216	0.1121	0.0958	0.1188	0.1181	0.1088	0.0987	160-170	0.0329	193.1100	1,1.93e+004
180	0.1188	0.1181	0.1088	0.0958	0.1188	0.1181	0.1088	0.0987	170-180	0.0104	193.1100	1,1.93e+004
DEG	LUMINOUS INTENSITY:cd									UNIT:lm		

C Range: 0 - 360DEG
C Interval: 22.5DEG
Test Speed: HIGH
Temperature:15DEG
Operators:
Test Date:2020-11-13

γ Range: 0 - 180DEG
 γ Interval: 1.0DEG
Test System:EVERFINE GO-2000A_V1 SYSTEM V2.0.407.13
Humidity:71%
Test Distance:6.700m [K=1.0000]
Remarks:

LUMINANCE LIMITATION CURVES

Test:U:12.396V I:0.2765A P:2.1433W PF:0.6254 Freq:50.00Hz Lamp Flux:1x1 lm		
Name: LEDSMDG43W	TYPE:LED	WEIGHT:
SPEC.:	DIM.:	SERIAL No.:1
MFR.:	SUR.:	Shielding Angle:



LUMINANCE cd/(m2)		
G(DEG)	C0/180	C90/270
85	178775	256826
80	103726	132101
75	71670	89525
70	54161	67491
65	43028	54036
60	35180	44841
55	30290	38267
50	26659	33305
45	23523	29154

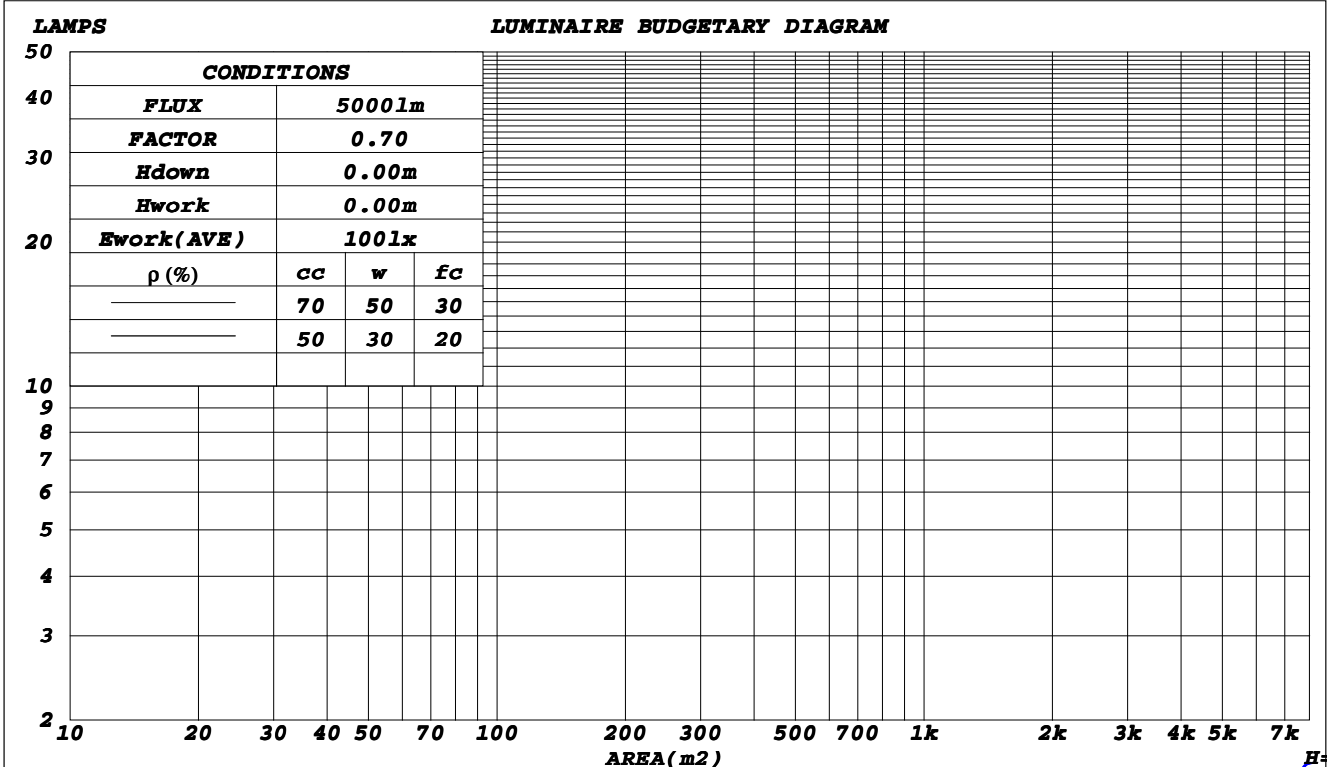
C Range: 0 - 360DEG
C Interval: 22.5DEG
Test Speed: HIGH
Temperature: 15DEG
Operators:
Test Date: 2020-11-13

γ Range: 0 - 180DEG
γ Interval: 1.0DEG
Test System: EVERFINE GO-2000A_V1 SYSTEM V2.0.407.13
Humidity: 71%
Test Distance: 6.700m [K=1.0000]
Remarks:

CU AND LUMINAIRE BUDGETARY ESTIMATE DIAGRAM

Test:U:12.396V I:0.2765A P:2.1433W PF:0.6254 Freq:50.00Hz Lamp Flux:1x1 lm		
Name: LEDSMGD43W	TYPE:LED	WEIGHT:
SPEC.:	DIM.:	SERIAL No.:1
MFR.:	SUR.:	Shielding Angle:

ρ_{cc}	80%			70%			50%			30%			10%			0
ρ_w	50%	30%	10%	50%	30%	10%	50%	30%	10%	50%	30%	10%	50%	30%	10%	0
ρ_{fc}	20%			20%			20%			20%			20%			0
RCR	RCR:Room Cavity Ratio															
	Coefficients of Utilization(CU)															
0.0	219.32	219.32	219.32	209.07	209.07	209.07	189.94	189.94	189.94	172.44	172.44	172.44	156.36	156.36	156.36	148.81
1.0	171.49	158.26	146.34	162.50	150.53	139.68	145.65	135.92	127.00	130.18	122.34	115.10	115.91	109.70	103.90	96.10
2.0	141.90	123.64	108.29	134.15	117.55	103.47	119.60	105.95	94.16	106.18	95.05	85.28	93.77	84.80	76.79	69.36
3.0	120.21	99.98	83.85	113.55	95.05	80.15	101.00	85.61	72.94	89.39	76.68	65.99	78.62	68.20	59.28	52.35
4.0	103.70	83.00	67.18	97.96	78.94	64.23	87.12	71.12	58.45	77.06	63.68	52.83	67.70	56.57	47.37	40.97
5.0	90.74	70.31	55.23	85.77	66.91	52.81	76.37	60.35	48.07	67.61	54.06	43.43	59.44	48.04	38.89	33.00
6.0	80.31	60.51	46.31	75.99	57.64	44.30	67.79	52.06	40.33	60.13	46.70	36.43	52.97	41.54	32.61	27.19
7.0	71.77	52.77	39.46	67.99	50.31	37.76	60.80	45.52	34.39	54.06	40.90	31.08	47.74	36.45	27.82	22.83
8.0	64.67	46.53	34.07	61.34	44.40	32.62	55.00	40.25	29.73	49.05	36.24	26.89	43.44	32.36	24.08	19.47
9.0	58.71	41.43	29.76	55.76	39.57	28.50	50.13	35.95	26.01	44.84	32.43	23.54	39.84	29.03	21.10	16.83
10.0	53.64	37.20	26.26	51.02	35.57	25.16	46.00	32.37	22.98	41.25	29.28	20.82	36.77	26.27	18.69	14.73



C Range: 0 - 360DEG
 C Interval: 22.5DEG
 Test Speed: HIGH
 Temperature: 15DEG
 Operators:
 Test Date: 2020-11-13

γ Range: 0 - 180DEG
 γ Interval: 1.0DEG
 Test System: EVERFINE GO-2000A_V1 SYSTEM V2.0.407.13
 Humidity: 71%
 Test Distance: 6.700m [K=1.0000]
 Remarks:

WEC AND CCEC

Test:U:12.396V I:0.2765A P:2.1433W PF:0.6254 Freq:50.00Hz Lamp Flux:1x1 lm		
Name: LEDSMGD43W	TYPE:LED	WEIGHT:
SPEC.:	DIM.:	SERIAL No.:1
MFR.:	SUR.:	Shielding Angle:

ρ_{cc}	80%			70%			50%			30%			10%			0
ρ_w	50%	30%	10%	50%	30%	10%	50%	30%	10%	50%	30%	10%	50%	30%	10%	0
ρ_{fc}	20%			20%			20%			20%			20%			0
RCR	RCR:Room Cavity Ratio						Wall Exitance Coefficients(WEC)									
0.0																
1.0	95.1654	1.187	1.144	2.365	2.687	6.737	7.121	9.982	5.962	2.302	7.470	5.237	7.862	5.131	4.550	
2.0	77.482	2.464	3.027	4.931	1.271	2.710	0.163	9.014	2.115	5.753	6.881	1.546	1.684	4.890	1.000	
3.0	66.403	5.339	0.584	4.093	4.327	0.333	9.759	2.385	9.842	5.745	0.546	9.365	2.022	8.803	3.913	
4.0	58.298	0.296	8.907	5.621	0.941	6.845	2.262	7.719	8.278	4.861	0.610	3.874	5.202	4.562	7.481	
5.0	52.022	6.510	7.675	0.122	5.733	4.954	6.532	4.237	1.344	3.192	2.794	5.780	0.072	1.417	6.435	
6.0	46.992	3.557	7.743	5.262	2.864	5.814	1.981	1.520	2.613	8.930	2.225	9.473	6.068	9.985	6.638	
7.0	42.852	1.187	0.064	1.272	0.564	5.860	8.271	9.351	5.573	5.464	8.182	2.913	2.821	7.054	5.013	
8.0	39.380	9.243	5.410	3.793	8.677	5.279	5.176	7.574	0.018	2.586	6.508	7.623	1.425	4.784	5.088	
9.0	36.421	7.618	9.913	5.091	7.104	7.992	2.547	6.092	5.613	0.152	5.114	3.262	7.893	4.167	4.094	
10.0	33.862	6.240	5.082	2.632	5.765	3.983	0.284	4.837	4.172	8.064	3.935	9.622	5.963	3.060	3.748	

ρ_{cc}	80%			70%			50%			30%			10%			0
ρ_w	50%	30%	10%	50%	30%	10%	50%	30%	10%	50%	30%	10%	50%	30%	10%	0
ρ_{fc}	20%			20%			20%			20%			20%			0
RCR	RCR:Room Cavity Ratio						Ceiling Cavity Exitance Coefficients(CCEC)									
0.0																
1.0	71.265	3.848	7.155	0.976	4.792	9.182	1.708	7.695	4.012	4.002	1.813	9.782	7.690	7.021	6.397	
2.0	70.315	9.605	0.595	0.223	1.303	3.732	1.273	5.495	0.502	3.792	0.648	7.884	6.356	6.795	8.827	
3.0	68.925	6.582	6.745	9.091	8.812	0.524	0.568	3.910	8.422	3.430	9.801	6.756	5.286	4.305	4.888	
4.0	67.365	4.291	4.315	7.802	6.915	8.494	9.752	2.692	7.102	2.991	9.151	6.037	3.996	2.355	2.272	
5.0	65.763	2.482	2.675	6.482	5.407	7.126	8.908	1.722	2.212	2.539	8.624	5.527	2.636	0.785	1.266	
6.0	64.206	1.001	1.525	5.184	4.169	6.163	8.072	0.912	5.582	2.088	8.187	5.207	1.275	9.465	0.222	
7.0	62.712	9.758	0.685	3.942	3.130	5.452	7.273	0.242	5.121	6.547	8.164	9.952	9.965	8.334	9.945	
8.0	61.302	8.698	0.046	2.772	2.243	4.913	6.512	9.652	4.762	1.242	7.491	4.758	8.725	7.364	8.866	
9.0	59.982	7.783	9.546	1.674	1.470	4.493	5.802	9.152	4.482	0.856	7.214	6.055	7.555	6.504	8.399	
10.0	58.752	6.978	9.145	0.650	0.793	4.153	5.138	7.024	2.620	4.946	9.964	4.826	6.465	5.744	8.011	

C Range: 0 - 360DEG
 C Interval: 22.5DEG
 Test Speed: HIGH
 Temperature: 15DEG
 Operators:
 Test Date: 2020-11-13

γ Range: 0 - 180DEG
 γ Interval: 1.0DEG
 Test System: EVERFINE GO-2000A_V1 SYSTEM V2.0.407.13
 Humidity: 71%
 Test Distance: 6.700m [K=1.0000]
 Remarks:

UGR(Unified Glare Rating) Table

Test:U:12.396V I:0.2765A P:2.1433W PF:0.6254 Freq:50.00Hz Lamp Flux:1x1 lm										
Name: LEDSMDG43W					TYPE:LED			WEIGHT:		
SPEC.:					DIM.:			SERIAL No.:1		
MFR.:					SUR.:			Shielding Angle:		
ceiling/cavity	0.7	0.7	0.5	0.5	0.3	0.7	0.7	0.5	0.5	0.3
walls	0.5	0.3	0.5	0.3	0.3	0.5	0.3	0.5	0.3	0.3
working plane	0.2	0.2	0.2	0.2	0.2	0.2	0.2	0.2	0.2	0.2
Room dimensions	Viewed crosswise					Viewed endwise				
x = 2H y = 2H	48.3	49.8	48.9	50.4	51.1	48.2	49.7	48.8	50.3	51.0
3H	51.5	52.9	52.2	53.5	54.3	51.6	53.0	52.2	53.6	54.3
4H	53.3	54.6	53.9	55.3	56.0	53.6	54.9	54.2	55.5	56.3
6H	55.2	56.4	55.8	57.1	57.9	55.7	56.9	56.3	57.6	58.4
8H	56.1	57.3	56.8	58.0	58.8	56.9	58.1	57.5	58.7	59.5
12H	57.1	58.2	57.7	58.9	59.7	58.2	59.4	58.9	60.0	60.8
4H 2H	49.4	50.7	50.0	51.4	52.1	49.3	50.6	49.9	51.3	52.0
3H	52.9	54.1	53.6	54.7	55.5	52.7	53.9	53.4	54.5	55.4
4H	54.9	56.0	55.6	56.7	57.5	54.7	55.8	55.4	56.5	57.3
6H	57.0	57.9	57.7	58.7	59.5	57.0	57.9	57.7	58.7	59.5
8H	58.0	58.9	58.7	59.6	60.5	58.2	59.2	59.0	59.9	60.8
12H	59.1	59.9	59.8	60.7	61.6	59.7	60.5	60.4	61.3	62.2
8H 4H	55.6	56.5	56.3	57.3	58.1	55.5	56.4	56.2	57.1	58.0
6H	58.1	58.9	58.8	59.7	60.6	57.9	58.7	58.7	59.5	60.4
8H	59.4	60.1	60.2	60.9	61.8	59.3	60.0	60.1	60.8	61.7
12H	60.8	61.5	61.6	62.2	63.2	61.0	61.6	61.7	62.4	63.3
12H 4H	55.8	56.7	56.5	57.4	58.3	55.7	56.6	56.5	57.3	58.2
6H	58.4	59.1	59.2	59.9	60.8	58.3	59.0	59.0	59.8	60.7
8H	59.9	60.5	60.7	61.3	62.3	59.8	60.4	60.6	61.2	62.2
Variations with the observer position at spacings:										
S = 1.0H	+ 0.1 / - 0.1					+ 0.1 / - 0.1				
1.5H	+ 0.2 / - 0.3					+ 0.2 / - 0.2				
2.0H	+ 0.3 / - 0.5					+ 0.2 / - 0.3				

CIE Pub.117, 1.000 lm Total Lamp Luminous Flux Correct (8log(F/F0) = -24.0)
 Area: 0.001256 m2

C Range: 0 - 360DEG
C Interval: 22.5DEG
Test Speed: HIGH
Temperature:15DEG
Operators:
Test Date:2020-11-13

γ Range: 0 - 180DEG
γ Interval: 1.0DEG
Test System:EVERFINE GO-2000A_V1 SYSTEM V2.0.407.13
Humidity:71%
Test Distance:6.700m [K=1.0000]
Remarks:

UTILIZATION FACTORS TABLE

Test:U:12.396V I:0.2765A P:2.1433W PF:0.6254 Freq:50.00Hz Lamp Flux:1x1 lm		
Name: LEDSMGD43W	TYPE:LED	WEIGHT:
SPEC.:	DIM.:	SERIAL No.:1
MFR.:	SUR.:	Shielding Angle:

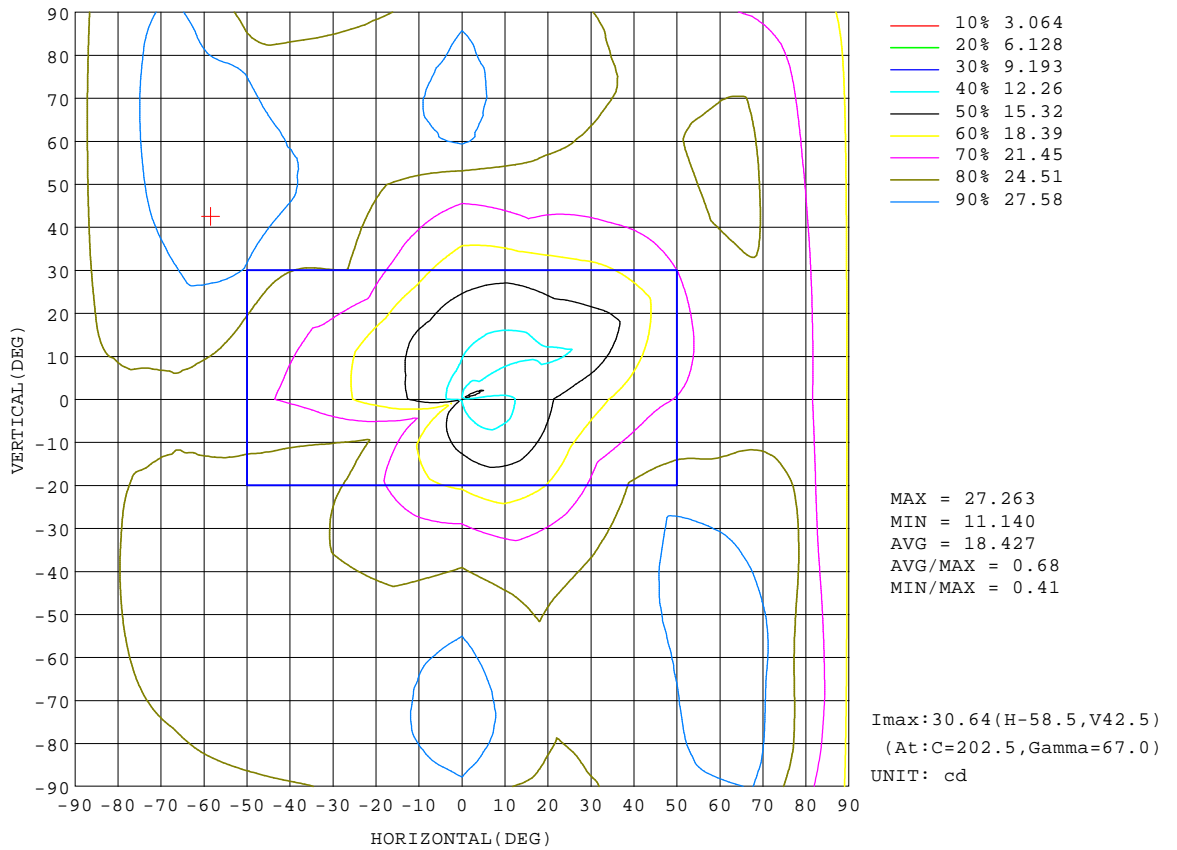
REFLECTANCE										
Ceiling	0.8	0.8	0.8	0.7	0.7	0.7	0.5	0.5	0.5	0
Walls	0.7	0.5	0.3	0.7	0.5	0.3	0.7	0.5	0.3	0
Working plane	0.2	0.2	0.2	0.2	0.2	0.2	0.2	0.2	0.2	0
ROOM INDEX	UTILIZATION FACTORS(PERCENT) $k(RI) \times RCR = 5$									
k = 0.60	7548	4901	3357	7329	4815	3317	6955	4649	3246	1868
0.80	9166	6298	4533	8848	6160	4464	8286	5890	4326	2680
1.00	10564	7633	5732	10175	7430	5637	9450	7620	5429	3573
1.25	11891	8955	6969	11409	8694	6822	10529	8197	6530	4459
1.50	12917	10023	7990	12363	9706	7804	11355	9094	7427	5174
2.00	14443	11744	9726	13799	11322	9457	12603	10542	8926	6403
2.50	15454	12922	10958	14739	12438	10628	13419	11511	9975	7239
3.00	16270	13927	12054	15509	13383	11665	14095	12354	10902	8014
4.00	17351	15306	13612	16519	14675	13126	14996	13489	12196	9081
5.00	18058	16251	14710	17188	15561	14156	15584	14267	13098	9830
ROOM INDEX	UF(total)									Direct
According to DIN EN 13032-2 2004			Suspended					SHRNOM = 1.25		

C Range: 0 - 360DEG
C Interval: 22.5DEG
Test Speed: HIGH
Temperature: 15DEG
Operators:
Test Date: 2020-11-13

γ Range: 0 - 180DEG
 γ Interval: 1.0DEG
Test System: EVERFINE GO-2000A_V1 SYSTEM V2.0.407.13
Humidity: 71%
Test Distance: 6.700m [K=1.0000]
Remarks:

ISOCANDELA DIAGRAM

Test:U:12.396V I:0.2765A P:2.1433W PF:0.6254 Freq:50.00Hz Lamp Flux:1x1 lm		
Name: LEDSM43W	TYPE:LED	WEIGHT:
SPEC.:	DIM.:	SERIAL No.:1
MFR.:	SUR.:	Shielding Angle:

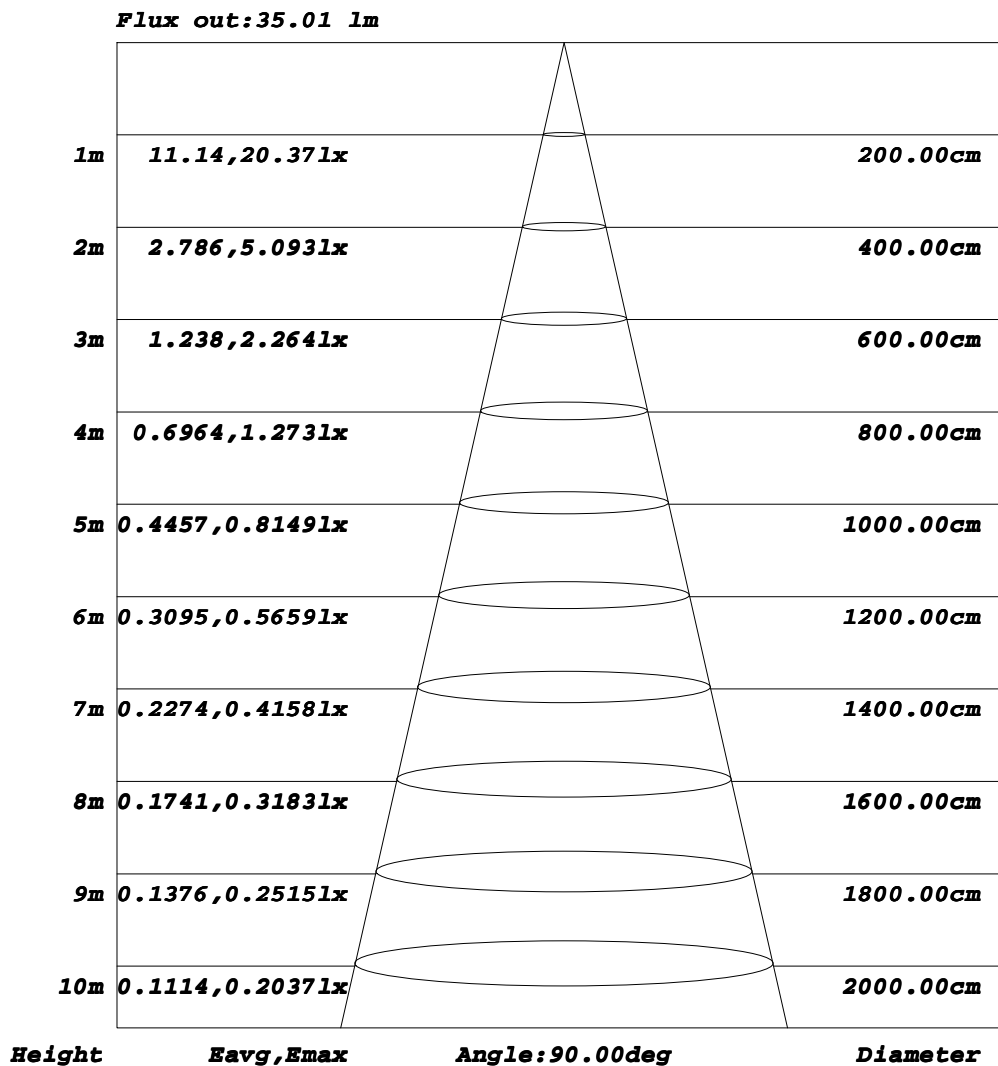


C Range: 0 - 360DEG
C Interval: 22.5DEG
Test Speed: HIGH
Temperature: 15DEG
Operators:
Test Date: 2020-11-13

γ Range: 0 - 180DEG
γ Interval: 1.0DEG
Test System: EVERFINE GO-2000A_V1 SYSTEM V2.0.407.13
Humidity: 71%
Test Distance: 6.700m [K=1.0000]
Remarks:

AAI Figure

Test:U:12.396V I:0.2765A P:2.1433W PF:0.6254 Freq:50.00Hz Lamp Flux:1x1 lm		
Name: LEDSMGD43W	TYPE:LED	WEIGHT:
SPEC.:	DIM.:	SERIAL No.:1
MFR.:	SUR.:	Shielding Angle:



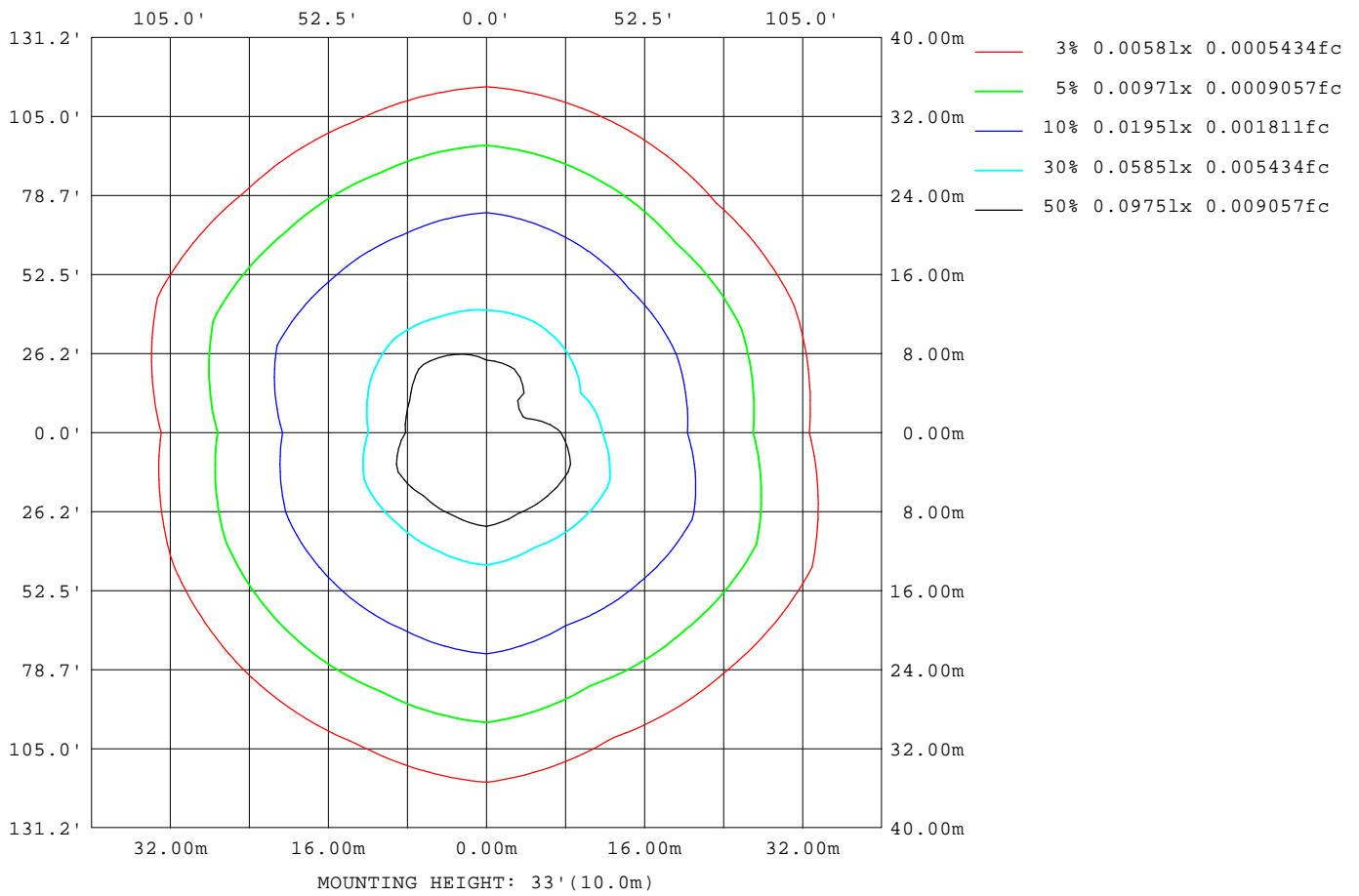
Note: The Curves indicate the illuminated area and the average illumination when the luminaire is at different distance.

C Range: 0 - 360DEG
C Interval: 22.5DEG
Test Speed: HIGH
Temperature: 15DEG
Operators:
Test Date: 2020-11-13

γ Range: 0 - 180DEG
γ Interval: 1.0DEG
Test System: EVERFINE GO-2000A_V1 SYSTEM V2.0.407.13
Humidity: 71%
Test Distance: 6.700m [K=1.0000]
Remarks:

ISOLUX DIAGRAM

Test:U:12.396V I:0.2765A P:2.1433W PF:0.6254 Freq:50.00Hz Lamp Flux:1x1 lm		
Name: LEDSM43W	TYPE:LED	WEIGHT:
SPEC.:	DIM.:	SERIAL No.:1
MFR.:	SUR.:	Shielding Angle:



C Range: 0 - 360DEG
C Interval: 22.5DEG
Test Speed: HIGH
Temperature: 15DEG
Operators:
Test Date: 2020-11-13

γ Range: 0 - 180DEG
γ Interval: 1.0DEG
Test System: EVERFINE GO-2000A_V1 SYSTEM V2.0.407.13
Humidity: 71%
Test Distance: 6.700m [K=1.0000]
Remarks:

LED Avg.L Report

Test:U:12.396V I:0.2765A P:2.1433W PF:0.6254 Freq:50.00Hz Lamp Flux:1x1 lm		
Name: LEDSMGD43W	TYPE:LED	WEIGHT:
SPEC.:	DIM.:	SERIAL No.:1
MFR.:	SUR.:	Shielding Angle:

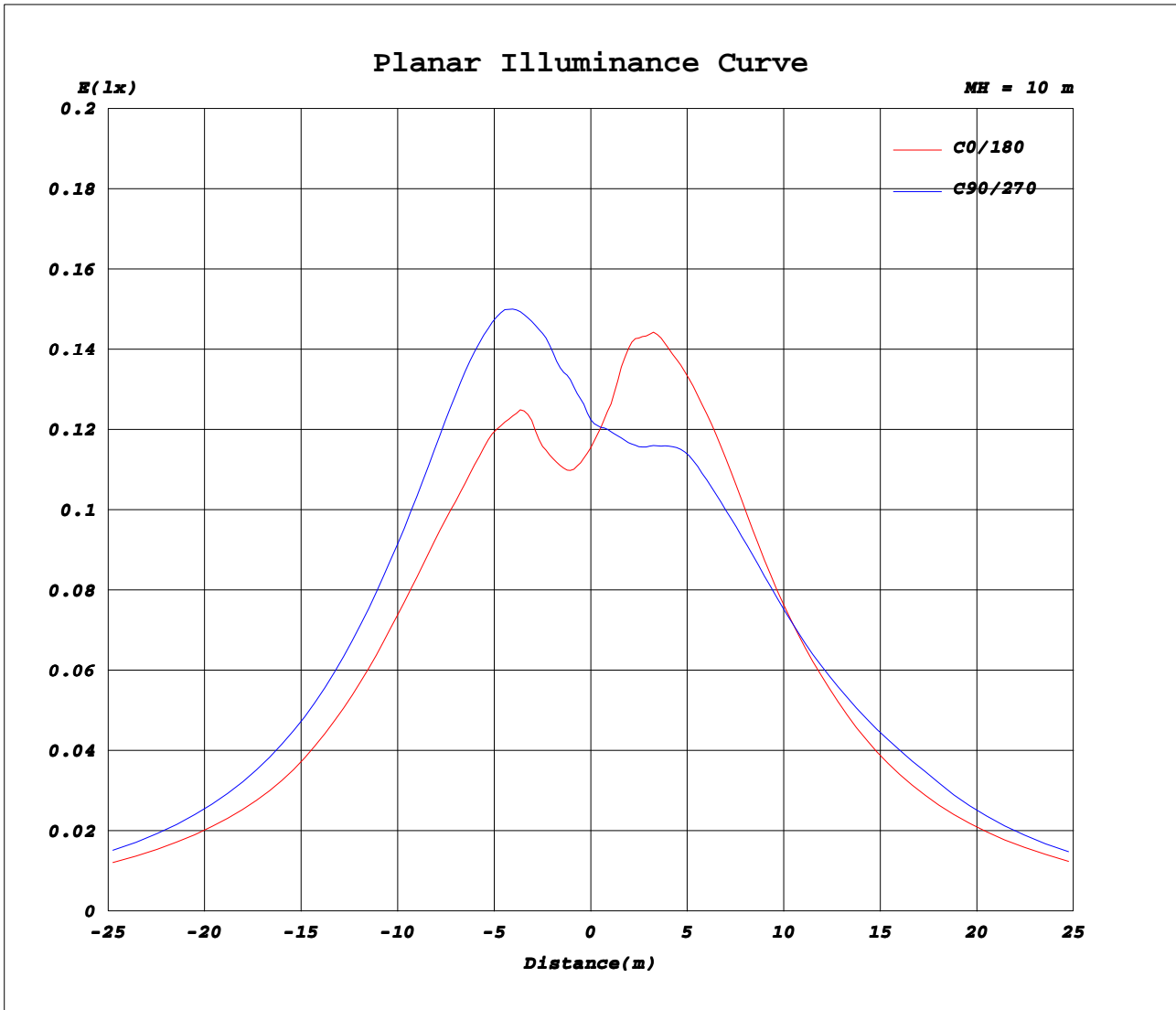
AvgL	cd/m2
L_0~180(65)av	48812
L_0~180(75)av	81157
L_0~180(85)av	223112
L_90~270(65)av	56484
L_90~270(75)av	92823
L_90~270(85)av	268448
L_45(65)av	49992
L_45(75)av	81811
L_45(85)av	233061

Standard: GB/T 29293-2012

C Range: 0 - 360DEG
C Interval: 22.5DEG
Test Speed: HIGH
Temperature:15DEG
Operators:
Test Date:2020-11-13

γ Range: 0 - 180DEG
γ Interval: 1.0DEG
Test System:EVERFINE GO-2000A_V1 SYSTEM V2.0.407.13
Humidity:71%
Test Distance:6.700m [K=1.0000]
Remarks:

Planar Illuminance Curve



C Range: 0 - 360DEG
C Interval: 22.5DEG
Test Speed: HIGH
Temperature: 15DEG
Operators:
Test Date: 2020-11-13

γ Range: 0 - 180DEG
γ Interval: 1.0DEG
Test System: EVERFINE GO-2000A_V1 SYSTEM V2.0.407.13
Humidity: 71%
Test Distance: 6.700m [K=1.0000]
Remarks:

LUMINOUS DISTRIBUTION INTENSITY DATA

Test:U:12.396V I:0.2765A P:2.1433W PF:0.6254 Freq:50.00Hz Lamp Flux:1x1 lm		
Name: LEDSMGD43W	TYPE:LED	WEIGHT:
SPEC.:	DIM.:	SERIAL No.:1
MFR.:	SUR.:	Shielding Angle:

Table--1

UNIT: cd

C (DEG) \ γ (DEG)	0	22.5	45	67.5	90	112.5	135	157.5	180	202.5	225	247.5	270	292.5	315	337.5			
0	12.9	12.9	12.9	12.9	12.9	12.9	12.9	12.9	12.9	12.9	12.9	12.9	12.9	12.9	12.9	12.9			
5	12.4	12.5	12.8	13.4	13.9	14.1	14.4	14.3	14.1	14.0	13.7	13.3	12.8	12.1	11.5	11.5			
10	13.1	13.2	13.6	14.5	15.1	15.7	15.7	15.6	16.1	15.8	15.2	14.0	12.9	11.8	10.8	10.5			
15	14.6	14.6	15.2	16.0	17.0	16.9	17.1	16.6	17.7	17.3	16.4	15.2	13.5	12.1	10.7	9.50			
20	16.8	17.0	17.2	17.7	19.0	18.3	18.5	17.5	19.2	18.7	17.7	16.8	14.7	12.7	11.2	9.02			
25	18.1	19.2	19.2	19.6	21.1	20.0	19.6	18.3	20.4	19.9	20.0	18.5	16.3	14.1	12.1	8.86			
30	19.5	21.9	21.5	21.7	23.0	21.7	20.6	19.0	21.7	21.6	23.0	20.6	17.7	15.7	13.8	9.20			
35	20.7	24.2	23.6	23.4	24.7	22.9	21.1	19.4	22.9	23.2	25.5	22.5	19.2	17.8	15.4	9.94			
40	22.2	26.3	25.5	24.8	26.1	23.5	21.8	19.7	23.6	24.2	27.4	24.0	20.8	19.7	16.6	11.1			
45	23.3	28.3	27.0	25.7	27.3	24.3	22.7	19.8	24.1	25.2	28.6	25.2	22.4	21.6	18.0	12.5			
50	24.0	30.0	28.2	26.4	28.3	25.1	23.4	19.9	24.8	27.0	29.6	26.2	24.3	22.8	19.6	13.9			
55	24.4	31.2	29.0	26.8	29.1	25.9	23.9	19.9	25.3	29.8	30.3	27.4	26.8	23.8	20.7	15.4			
60	24.7	32.2	29.3	27.0	29.7	26.3	24.3	19.9	25.8	32.2	30.6	28.4	29.4	24.6	21.3	16.7			
65	25.5	32.8	29.4	27.0	30.2	26.4	24.6	20.0	26.3	33.8	30.6	29.0	29.7	25.2	21.5	17.7			
70	26.0	33.1	29.4	27.1	30.6	26.3	24.8	20.0	26.6	34.1	30.5	29.0	29.8	25.6	21.8	18.6			
75	26.0	33.2	29.4	27.0	30.7	26.2	24.9	19.7	26.7	34.1	30.0	28.7	29.7	25.8	22.1	18.5			
80	25.3	33.1	29.6	26.7	30.4	26.1	24.6	19.1	26.9	33.8	29.6	28.2	29.4	25.7	22.0	18.2			
85	21.9	32.5	29.7	26.0	29.6	25.8	24.0	18.0	27.0	33.0	26.7	27.2	29.1	25.5	21.7	17.3			
90	20.0	30.9	29.6	25.0	27.7	25.4	22.0	16.1	26.6	31.6	24.9	25.6	28.6	25.3	21.2	15.6			
95	16.4	29.6	29.3	18.5	19.3	24.0	14.7	10.8	26.1	26.4	19.6	20.5	27.3	25.0	20.5	13.2			
100	12.8	22.9	27.5	10.48	11.2	21.4	8.73	5.60	21.9	19.7	16.4	15.2	25.4	24.6	17.2	10.2			
105	11.5	18.5	24.0	2.96	0.94	18.5	0.72	0.38	19.1	12.8	11.8	10.15	23.1	24.2	14.6	6.18			
110	6.29	12.3	20.5	0.35	0.43	0.20	0.44	0.18	15.1	5.80	4.25	5.73	21.2	0.21	12.6	3.10			
115	0.85	5.86	15.4	0.37	0.75	1.21	0.84	0.20	11.5	0.60	0.43	1.57	18.8	6.27	9.66	0.42			
120	0.37	0.68	9.67	1.11	2.22	3.93	2.11	0.20	7.72	0.44	0.39	0.55	17.0	11.9	6.73	0.29			
125	0.35	0.34	4.51	4.32	2.54	0.81	3.71	0.49	4.31	0.38	0.36	0.44	15.0	10.9	4.76	0.29			
130	0.32	0.28	1.90	4.39	1.06	0.41	1.89	1.50	2.54	0.28	0.31	0.71	13.3	7.92	2.26	0.29			
135	0.28	0.26	0.53	0.69	0.26	0.19	0.24	0.12	1.42	0.27	0.24	0.84	11.8	4.29	1.86	0.28			
140	0.26	0.24	0.32	0.13	0.20	0.15	0.19	0.25	0.50	0.26	0.20	1.23	10.29	1.18	1.67	0.25			
145	0.24	0.23	0.25	0.12	0.14	0.11	0.10	0.21	0.22	0.22	0.20	1.99	9.05	0.29	1.48	0.20			
150	0.22	0.23	0.18	0.11	0.12	0.10	0.10	0.08	0.18	0.22	0.18	0.14	4.82	0.15	0.81	0.13			
155	0.22	0.23	0.17	0.11	0.12	0.10	0.10	0.08	0.16	0.22	0.18	0.18	0.11	0.13	0.10	0.13			
160	0.18	0.15	0.15	0.11	0.12	0.10	0.10	0.10	0.16	0.16	0.15	0.13	0.11	0.12	0.10	0.12			
165	0.17	0.12	0.14	0.11	0.11	0.10	0.10	0.08	0.12	0.13	0.14	0.13	0.11	0.12	0.10	0.11			
170	0.12	0.12	0.12	0.11	0.11	0.10	0.10	0.08	0.12	0.12	0.12	0.12	0.11	0.12	0.10	0.11			
175	0.12	0.12	0.12	0.11	0.11	0.10	0.10	0.08	0.12	0.12	0.12	0.12	0.11	0.11	0.10	0.10			
180	0.12	0.12	0.12	0.11	0.11	0.10	0.10	0.08	0.12	0.12	0.12	0.12	0.11	0.11	0.10	0.10			

C Range: 0 - 360DEG
C Interval: 22.5DEG
Test Speed: HIGH
Temperature: 15DEG
Operators:
Test Date: 2020-11-13

γ Range: 0 - 180DEG
γ Interval: 1.0DEG
Test System: EVERFINE GO-2000A_V1 SYSTEM V2.0.407.13
Humidity: 71%
Test Distance: 6.700m [K=1.0000]
Remarks:

Photometric Data Table [cd]

G/C	0.0	22.5	45.0	67.5	90.0	112.5	135.0	157.5	180.0	202.5
0.0	12.91	12.91	12.91	12.91	12.91	12.91	12.91	12.91	12.91	12.91
3.0	12.53	12.60	12.77	13.10	13.51	13.66	13.73	13.78	13.51	13.46
6.0	12.47	12.56	12.88	13.58	14.20	14.39	14.76	14.59	14.35	14.25
9.0	12.88	12.97	13.34	14.21	14.82	15.35	15.51	15.32	15.72	15.44
12.0	13.57	13.68	14.18	15.03	15.89	16.21	16.25	16.01	16.92	16.52
15.0	14.56	14.63	15.23	15.99	16.96	16.88	17.06	16.59	17.74	17.30
18.0	16.07	16.12	16.36	17.01	18.12	17.68	17.95	17.20	18.73	18.01
21.0	17.03	17.37	17.57	18.11	19.41	18.64	18.78	17.69	19.42	18.92
24.0	17.86	18.70	18.80	19.22	20.72	19.69	19.42	18.17	20.14	19.61
27.0	18.78	20.28	20.11	20.41	21.87	20.69	20.09	18.59	20.94	20.53
30.0	19.50	21.93	21.47	21.69	22.97	21.69	20.58	18.97	21.72	21.58
33.0	20.21	23.35	22.77	22.70	24.04	22.56	20.93	19.21	22.48	22.61
36.0	21.06	24.69	24.05	23.69	24.98	23.06	21.17	19.43	23.09	23.57
39.0	21.92	25.90	25.16	24.51	25.80	23.33	21.61	19.62	23.51	24.11
42.0	22.66	27.10	26.11	25.18	26.56	23.74	22.15	19.76	23.83	24.51
45.0	23.33	28.30	26.96	25.71	27.29	24.26	22.66	19.80	24.11	25.18
48.0	23.80	29.37	27.72	26.14	27.98	24.82	23.11	19.82	24.50	26.16
51.0	24.14	30.30	28.40	26.45	28.53	25.29	23.47	19.85	24.92	27.50
54.0	24.37	30.99	28.93	26.70	28.96	25.77	23.81	19.84	25.18	29.21
57.0	24.40	31.63	29.27	26.92	29.34	26.14	24.16	19.88	25.50	30.90
60.0	24.67	32.16	29.31	27.01	29.68	26.34	24.30	19.94	25.83	32.20
63.0	25.18	32.56	29.38	27.05	30.03	26.41	24.50	19.97	26.19	33.17
66.0	25.62	32.90	29.38	27.03	30.31	26.31	24.64	20.00	26.44	34.17
69.0	25.90	33.09	29.37	27.08	30.52	26.29	24.73	20.00	26.51	34.18
72.0	26.03	33.19	29.37	27.06	30.66	26.24	24.88	19.88	26.61	34.15
75.0	26.02	33.20	29.42	27.03	30.68	26.22	24.86	19.68	26.74	34.13
78.0	25.88	33.18	29.51	26.79	30.58	26.16	24.77	19.37	26.89	34.03
81.0	24.59	32.96	29.59	26.54	30.24	26.04	24.54	18.88	26.93	33.66
84.0	22.06	32.66	29.66	26.09	29.82	25.87	24.22	18.21	27.01	33.18
87.0	21.66	32.09	29.68	25.70	29.22	25.68	23.28	17.48	26.88	32.61
90.0	20.04	30.91	29.63	25.00	27.66	25.39	21.96	16.09	26.62	31.61
93.0	16.71	28.98	29.60	20.41	22.82	24.72	17.49	13.21	26.41	29.16
96.0	16.18	28.94	29.21	15.66	17.23	23.51	12.88	9.785	25.88	25.65
99.0	13.63	24.26	27.97	11.06	11.93	21.88	9.140	6.639	22.81	21.65
102.0	11.94	21.82	26.64	7.096	6.535	20.12	4.899	3.195	20.81	17.80
105.0	11.52	18.54	23.97	2.963	0.9371	18.53	0.7250	0.3813	19.13	12.78
108.0	7.616	14.70	21.67	0.7165	0.4658	0.1932	0.4454	0.1657	16.31	9.042
111.0	6.051	11.00	19.10	0.3546	0.4715	0.3694	0.4441	0.1887	14.48	4.067
114.0	1.321	7.091	15.89	0.3681	0.5668	1.280	0.7997	0.2002	11.99	0.7136
117.0	0.6095	2.969	14.14	0.3854	2.000	5.030	1.429	0.2002	10.28	0.5420
120.0	0.3740	0.6776	9.668	1.112	2.219	3.930	2.108	0.2002	7.721	0.4404
123.0	0.3564	0.4226	7.452	4.001	2.794	1.140	3.132	0.2336	6.117	0.4055
126.0	0.3494	0.3075	3.711	5.080	2.637	0.7282	4.056	0.6744	3.861	0.3638
129.0	0.3320	0.2865	2.975	4.204	1.314	0.4760	2.338	1.546	2.878	0.2972
132.0	0.2971	0.2726	0.7202	2.660	0.4174	0.2864	0.3583	0.1883	2.117	0.2656
135.0	0.2761	0.2586	0.5253	0.6932	0.2639	0.1867	0.2381	0.1175	1.423	0.2691
138.0	0.2691	0.2551	0.3508	0.1498	0.2441	0.1588	0.2177	0.1680	0.8688	0.2551
141.0	0.2551	0.2376	0.2956	0.1328	0.1947	0.1464	0.1801	0.2762	0.3971	0.2551
144.0	0.2481	0.2307	0.2606	0.1226	0.1781	0.1122	0.1107	0.2575	0.2339	0.2342
147.0	0.2342	0.2272	0.2086	0.1125	0.1319	0.1028	0.1016	0.0805	0.2027	0.2167
150.0	0.2167	0.2272	0.1808	0.1125	0.1221	0.1028	0.1045	0.0782	0.1782	0.2167
153.0	0.2167	0.2272	0.1737	0.1125	0.1220	0.1028	0.0987	0.0782	0.1642	0.2167
156.0	0.2201	0.2236	0.1563	0.1125	0.1187	0.1028	0.0987	0.0832	0.1642	0.2167
159.0	0.1887	0.1642	0.1460	0.1125	0.1155	0.1028	0.0987	0.2605	0.1677	0.1748
162.0	0.1817	0.1223	0.1459	0.1125	0.1154	0.1028	0.0987	0.0759	0.1325	0.1433
165.0	0.1712	0.1188	0.1424	0.1125	0.1121	0.1028	0.0958	0.0759	0.1188	0.1328
168.0	0.1258	0.1188	0.1216	0.1125	0.1121	0.1028	0.0958	0.0759	0.1188	0.1293
171.0	0.1223	0.1188	0.1216	0.1125	0.1089	0.1028	0.0958	0.0759	0.1188	0.1188
174.0	0.1223	0.1188	0.1181	0.1125	0.1088	0.1028	0.0958	0.0759	0.1188	0.1188
177.0	0.1223	0.1188	0.1181	0.1125	0.1088	0.1028	0.0958	0.0759	0.1188	0.1188
180.0	0.1188	0.1188	0.1181	0.1125	0.1088	0.1028	0.0958	0.0759	0.1188	0.1188
G/C	225.0	247.5	270.0	292.5	315.0	337.5				
0.0	12.91	12.91	12.91	12.91	12.91	12.91				
3.0	13.28	13.03	12.76	12.26	12.10	12.08				
6.0	13.88	13.36	12.81	12.05	11.31	11.23				
9.0	14.79	13.79	12.90	11.86	10.89	10.67				
12.0	15.70	14.41	13.11	11.86	10.74	10.02				
15.0	16.41	15.21	13.53	12.05	10.74	9.498				
18.0	17.10	16.07	14.22	12.38	10.96	9.157				
21.0	18.07	17.13	15.02	12.91	11.30	8.967				
24.0	19.51	18.13	15.98	13.74	11.85	8.859				
27.0	21.25	19.43	16.91	14.66	12.74	8.945				
30.0	23.01	20.64	17.71	15.68	13.82	9.197				

C Range: 0 - 360DEG
 C Interval: 22.5DEG
 Test Speed: HIGH
 Temperature: 15DEG
 Operators:
 Test Date: 2020-11-13

γ Range: 0 - 180DEG
 γ Interval: 1.0DEG
 Test System: EVERFINE GO-2000A_V1 SYSTEM V2.0.407.13
 Humidity: 71%
 Test Distance: 6.700m [K=1.0000]
 Remarks:

Photometric Data Table [cd]

33.0	24.52	21.78	18.56	16.93	14.70	9.597
36.0	26.05	22.82	19.49	18.12	15.82	10.14
39.0	27.14	23.69	20.48	19.28	16.45	10.85
42.0	27.99	24.48	21.44	20.65	17.13	11.71
45.0	28.63	25.19	22.45	21.57	17.98	12.50
48.0	29.20	25.85	23.51	22.27	18.93	13.36
51.0	29.76	26.47	24.82	22.97	19.85	14.16
54.0	30.15	27.15	26.32	23.58	20.55	15.06
57.0	30.46	27.84	27.90	24.15	20.93	16.02
60.0	30.57	28.43	29.39	24.64	21.26	16.73
63.0	30.68	28.87	29.63	25.05	21.39	17.31
66.0	30.64	29.04	29.79	25.31	21.59	17.93
69.0	30.53	29.03	29.80	25.49	21.79	18.41
72.0	30.30	28.93	29.77	25.63	21.95	18.78
75.0	30.01	28.70	29.67	25.76	22.09	18.55
78.0	29.75	28.40	29.54	25.72	22.09	18.31
81.0	29.48	28.03	29.38	25.66	21.87	18.17
84.0	27.70	27.46	29.22	25.59	21.69	17.62
87.0	25.65	26.78	28.94	25.48	21.58	16.79
90.0	24.90	25.56	28.61	25.31	21.23	15.60
93.0	21.16	23.56	28.45	25.06	20.87	13.99
96.0	19.09	20.35	26.33	24.96	19.77	12.01
99.0	17.06	16.23	25.43	24.80	17.42	10.42
102.0	13.62	14.73	25.02	24.37	16.52	8.242
105.0	11.77	10.15	23.06	24.23	14.58	6.183
108.0	6.306	8.743	21.75	15.13	13.04	4.421
111.0	1.242	5.164	20.94	0.1839	12.36	1.964
114.0	0.4991	2.718	19.59	1.992	10.02	0.4451
117.0	0.3820	0.8900	17.96	6.120	9.201	0.3297
120.0	0.3855	0.5456	17.04	11.90	6.734	0.2853
123.0	0.3750	0.4499	15.98	11.54	5.470	0.2853
126.0	0.3471	0.4634	14.56	10.41	3.930	0.2853
129.0	0.3195	0.5827	13.56	8.625	2.446	0.2853
132.0	0.2949	0.8145	12.68	6.562	2.073	0.2853
135.0	0.2359	0.8418	11.83	4.291	1.860	0.2808
138.0	0.2014	1.050	10.86	2.199	1.727	0.2693
141.0	0.2014	1.465	10.04	0.8986	1.637	0.2440
144.0	0.2014	1.980	9.298	0.3820	1.521	0.2232
147.0	0.1943	1.117	8.585	0.1964	1.388	0.1382
150.0	0.1806	0.1432	4.818	0.1527	0.8078	0.1335
153.0	0.1806	0.1397	0.1121	0.1340	0.1503	0.1473
156.0	0.1841	0.1569	0.1088	0.1340	0.0987	0.1312
159.0	0.1841	0.1329	0.1088	0.1247	0.0987	0.1196
162.0	0.1458	0.1261	0.1088	0.1247	0.0987	0.1105
165.0	0.1353	0.1261	0.1088	0.1215	0.0987	0.1104
168.0	0.1181	0.1261	0.1088	0.1185	0.0987	0.1082
171.0	0.1181	0.1227	0.1088	0.1153	0.0987	0.1058
174.0	0.1181	0.1193	0.1088	0.1122	0.0987	0.1035
177.0	0.1181	0.1193	0.1088	0.1091	0.0987	0.0989
180.0	0.1181	0.1125	0.1088	0.1060	0.0987	0.0966

C Range: 0 - 360DEG
C Interval: 22.5DEG
Test Speed: HIGH
Temperature: 15DEG
Operators:
Test Date: 2020-11-13

γ Range: 0 - 180DEG
γ Interval: 1.0DEG
Test System: EVERFINE GO-2000A_V1 SYSTEM V2.0.407.13
Humidity: 71%
Test Distance: 6.700m [K=1.0000]
Remarks: