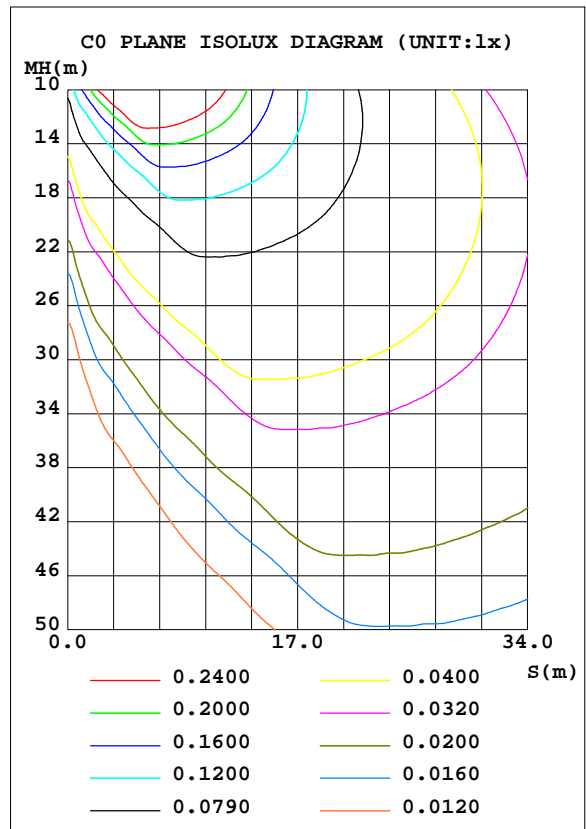
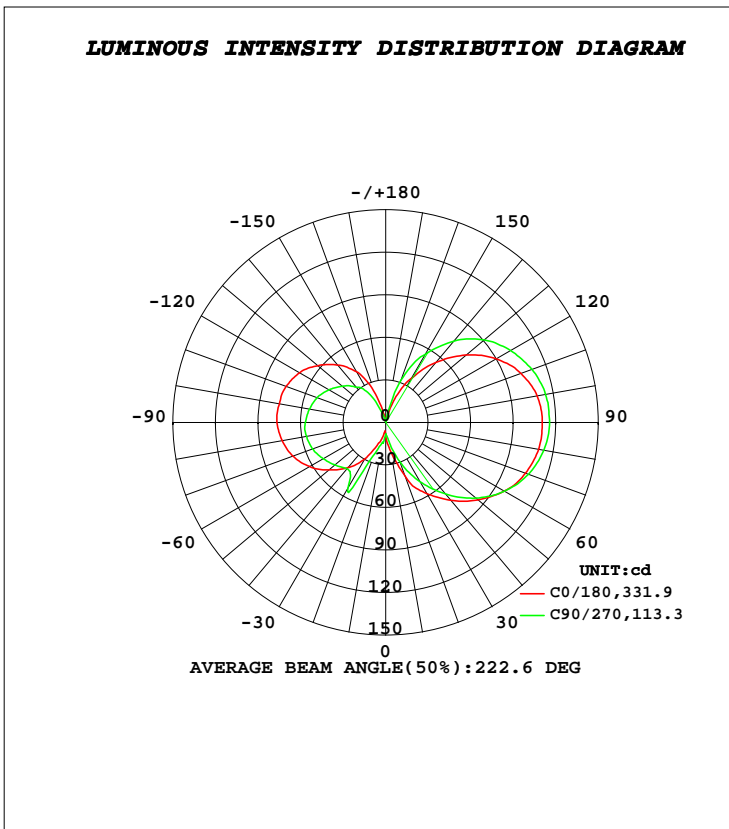


LUMINAIRE PHOTOMETRIC TEST REPORT

Test:U:230.26V I:0.0374A P:7.7220W PF:0.8969 Freq:49.99Hz Lamp Flux:828.397x1 lm		
NAME: LEDG95E278W	TYPE:LED	WEIGHT:
SPEC.:8W	DIM.:	SERIAL No.:1
MFR.: EVERFINE	SUR.:	Shielding Angle:

DATA OF LAMP		PHOTOMETRIC DATA				Eff: 107.28 lm/W
MODEL	G95	I _{max} (cd)	124.4	S/MH(C0/180)	4.30	
NOMINAL POWER(W)	8	LOR(%)	100.0	S/MH(C90/270)	3.93	
RATED VOLTAGE(V)	230	TOTAL FLUX(lm)	828.40	η UP, DN(C0-180)	30.1, 29.3	
NOMINAL FLUX(lm)	828.397	CIE CLASS	DIFFUSE	η UP, DN(C180-360)	19.5, 21.1	
LAMPS INSIDE	1	η up(%)	49.6	CIBSE SHR NOM	1.50	
TEST VOLTAGE(V)	230	η down(%)	50.4	CIBSE SHR MAX	1.55	



C Range: 0 - 360DEG
C Interval: 22.5DEG
Test Speed: HIGH
Temperature: 15DEG
Operators:
Test Date: 2020-09-15

γ Range: 0 - 180DEG
γ Interval: 1.0DEG
Test System: EVERFINE GO-2000A_V1 SYSTEM V2.0.407.13
Humidity: 71%
Test Distance: 6.700m [K=1.0000]
Remarks:

ZONAL FLUX DIAGRAM

ZONAL FLUX DIAGRAM:

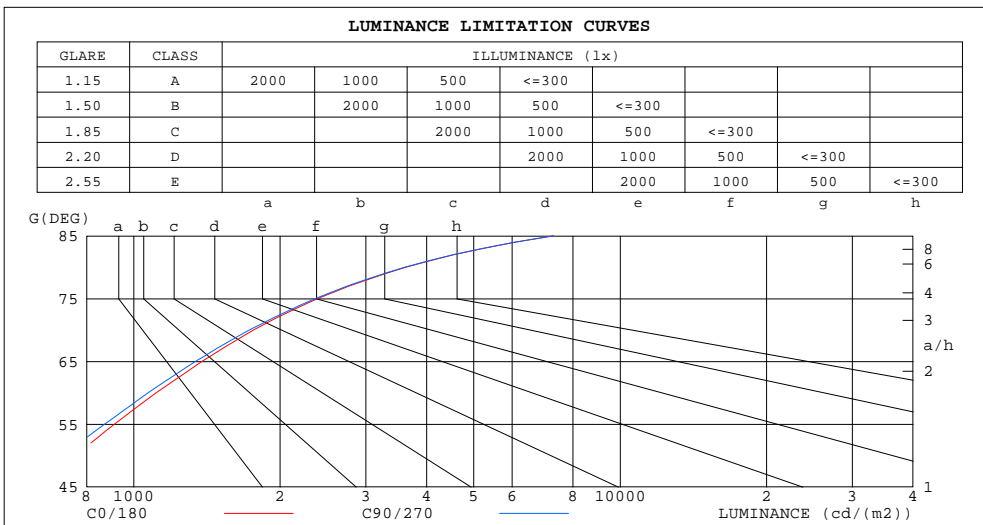
γ	C0	C45	C90	C135	C180	C225	C270	C315	γ	Φ zone	Φ total	%lum,lamp
10	20.99	18.42	13.36	10.15	8.486	11.03	14.47	18.67	0- 10	1.121	1.121	0.14,0.14
20	40.46	35.01	29.68	24.65	16.15	18.84	24.06	36.03	10- 20	6.199	7.321	0.88,0.88
30	58.02	55.13	48.28	43.18	29.78	33.98	53.62	50.62	20- 30	17.34	24.66	2.98,2.98
40	71.65	74.21	65.85	57.46	41.81	44.76	42.73	63.38	30- 40	31.39	56.06	6.77,6.77
50	85.00	90.83	83.08	71.72	52.24	50.40	46.79	74.33	40- 50	46.60	102.7	12.4,12.4
60	96.79	105.1	96.93	85.01	62.25	56.25	51.10	82.77	50- 60	61.87	164.5	19.9,19.9
70	104.9	116.0	107.1	95.65	69.64	61.62	54.85	88.57	60- 70	75.55	240.1	29,29
80	109.6	122.0	113.3	102.8	74.16	65.33	56.78	91.73	70- 80	85.74	325.8	39.3,39.3
90	110.5	124.4	115.5	106.4	76.81	66.60	56.74	92.09	80- 90	91.44	417.2	50.4,50.4
100	108.5	122.6	114.4	106.0	76.23	64.70	54.65	89.67	90-100	91.72	509.0	61.4,61.4
110	101.5	116.5	109.7	102.8	74.75	61.90	51.45	84.13	100-110	86.79	595.8	71.9,71.9
120	89.94	107.1	101.7	95.79	70.28	56.58	46.24	76.55	110-120	76.77	672.5	81.2,81.2
130	74.06	94.54	90.59	85.50	62.45	49.67	39.91	65.15	120-130	62.98	735.5	88.8,88.8
140	55.47	78.77	75.07	71.65	52.93	40.10	32.63	52.84	130-140	46.96	782.5	94.5,94.5
150	35.79	53.97	55.43	56.94	41.65	24.80	23.47	31.22	140-150	29.99	812.5	98.1,98.1
160	15.85	22.07	31.56	23.69	21.58	10.29	6.722	9.362	150-160	13.47	825.9	99.7,99.7
170	0.4748	0.5602	0.8077	0.9125	0.7838	0.6764	0.5630	0.5276	160-170	2.424	828.4	100,100
180	0.2539	0.2615	0.2675	0.2736	0.2570	0.2584	0.2707	0.2833	170-180	0.0432	828.4	100,100
DEG	LUMINOUS INTENSITY:cd									UNIT:lm		

C Range: 0 - 360DEG
C Interval: 22.5DEG
Test Speed: HIGH
Temperature:15DEG
Operators:
Test Date:2020-09-15

γ Range: 0 - 180DEG
 γ Interval: 1.0DEG
Test System:EVERFINE GO-2000A_V1 SYSTEM V2.0.407.13
Humidity:71%
Test Distance:6.700m [K=1.0000]
Remarks:

LUMINANCE LIMITATION CURVES

Test:U:230.26V I:0.0374A P:7.7220W PF:0.8969 Freq:49.99Hz Lamp Flux:828.397x1 lm		
NAME: LEDG95E278W	TYPE:LED	WEIGHT:
SPEC.:8W	DIM.:	SERIAL No.:1
MFR.: EVERFINE	SUR.:	Shielding Angle:



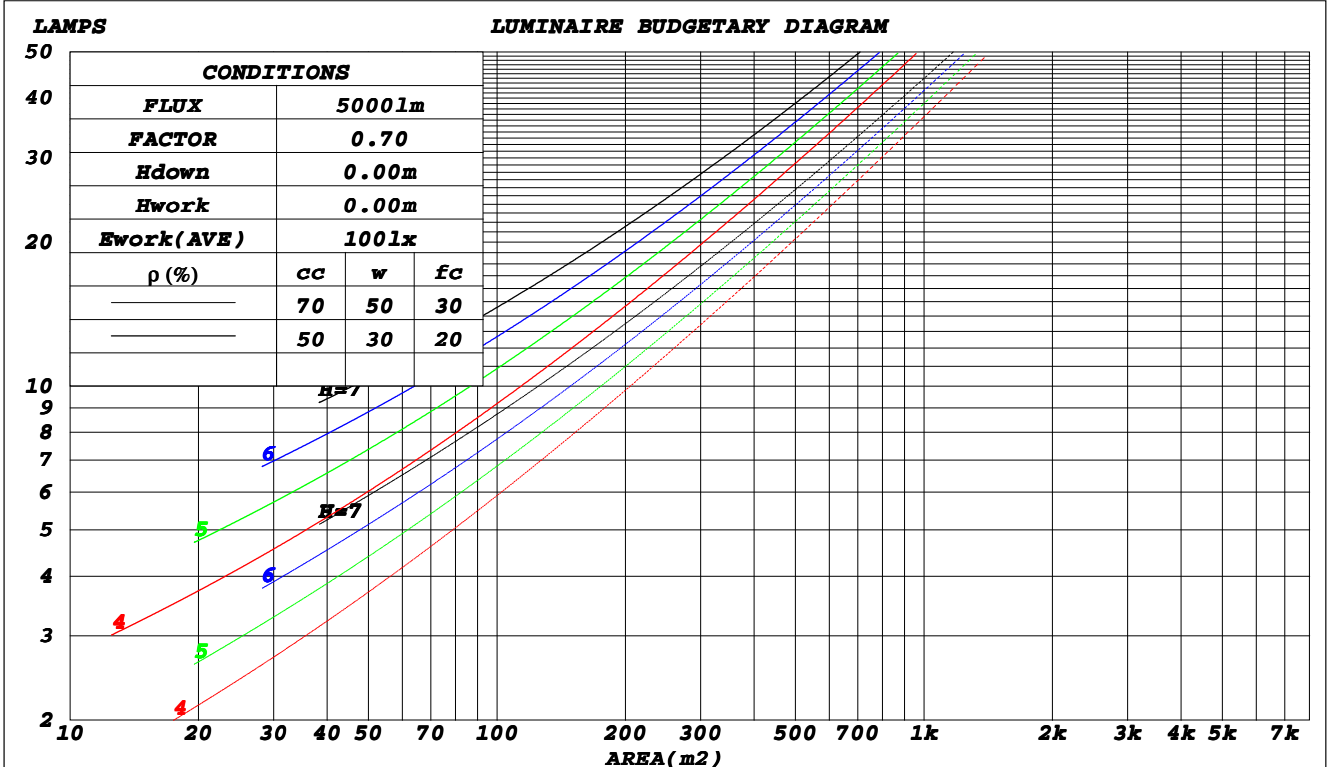
C Range: 0 - 360DEG
C Interval: 22.5DEG
Test Speed: HIGH
Temperature: 15DEG
Operators:
Test Date: 2020-09-15

γ Range: 0 - 180DEG
γ Interval: 1.0DEG
Test System: EVERFINE GO-2000A_V1 SYSTEM V2.0.407.13
Humidity: 71%
Test Distance: 6.700m [K=1.0000]
Remarks:

CU AND LUMINAIRE BUDGETARY ESTIMATE DIAGRAM

Test:U:230.26V I:0.0374A P:7.7220W PF:0.8969 Freq:49.99Hz Lamp Flux:828.397x1 Lm		
NAME: LEDG95E278W	TYPE:LED	WEIGHT:
SPEC.:8W	DIM.:	SERIAL No.:1
MFR.: EVERFINE	SUR.:	Shielding Angle:

ρ_{cc}	80%			70%			50%			30%			10%			0
ρ_w	50%	30%	10%	50%	30%	10%	50%	30%	10%	50%	30%	10%	50%	30%	10%	0
ρ_{fc}	20%			20%			20%			20%			20%			0
RCR	RCR:Room Cavity Ratio						Coefficients of Utilization(CU)									
0.0	1.07	1.07	1.07	.99	.99	.99	.84	.84	.84	.69	.69	.69	.56	.56	.56	.50
1.0	.85	.79	.74	.78	.73	.68	.65	.61	.57	.52	.49	.46	.41	.39	.36	.31
2.0	.72	.63	.56	.65	.58	.51	.54	.48	.43	.43	.38	.34	.33	.29	.26	.21
3.0	.61	.52	.44	.56	.47	.40	.45	.39	.33	.36	.31	.27	.27	.23	.20	.16
4.0	.53	.43	.36	.48	.39	.33	.39	.32	.27	.31	.26	.21	.23	.19	.16	.12
5.0	.46	.37	.29	.42	.34	.27	.34	.28	.22	.27	.22	.18	.20	.16	.13	.09
6.0	.41	.32	.25	.37	.29	.23	.31	.24	.19	.24	.19	.15	.18	.14	.11	.08
7.0	.37	.27	.21	.33	.25	.19	.27	.21	.16	.22	.16	.12	.16	.12	.09	.06
8.0	.33	.24	.18	.30	.22	.17	.25	.18	.14	.20	.14	.11	.15	.11	.08	.05
9.0	.30	.21	.16	.27	.20	.14	.22	.16	.12	.18	.13	.09	.14	.10	.07	.04
10.0	.27	.19	.14	.25	.18	.13	.20	.14	.10	.16	.11	.08	.12	.09	.06	.04



C Range: 0 - 360DEG
 C Interval: 22.5DEG
 Test Speed: HIGH
 Temperature: 15DEG
 Operators:
 Test Date: 2020-09-15

γ Range: 0 - 180DEG
 γ Interval: 1.0DEG
 Test System: EVERFINE GO-2000A_V1 SYSTEM V2.0.407.13
 Humidity: 71%
 Test Distance: 6.700m [K=1.0000]
 Remarks:

WEC AND CCEC

Test:U:230.26V I:0.0374A P:7.7220W PF:0.8969 Freq:49.99Hz Lamp Flux:828.397x1 lm		
NAME: LEDG95E278W	TYPE:LED	WEIGHT:
SPEC.:8W	DIM.:	SERIAL No.:1
MFR.: EVERFINE	SUR.:	Shielding Angle:

ρ_{cc}	80%			70%			50%			30%			10%			0
ρ_w	50%	30%	10%	50%	30%	10%	50%	30%	10%	50%	30%	10%	50%	30%	10%	0
ρ_{fc}	20%			20%			20%			20%			20%			0
RCR	RCR:Room Cavity Ratio						Wall Exitance Coefficients(WEC)									
0.0																
1.0	.434	.247	.078	.412	.235	.075	.370	.212	.068	.331	.191	.061	.296	.172	.055	
2.0	.358	.196	.060	.338	.186	.057	.299	.167	.052	.264	.148	.046	.231	.131	.041	
3.0	.310	.165	.049	.291	.156	.047	.256	.139	.042	.224	.123	.038	.194	.107	.033	
4.0	.275	.143	.042	.258	.135	.040	.225	.119	.036	.195	.105	.032	.168	.091	.028	
5.0	.247	.126	.036	.231	.119	.035	.201	.105	.031	.174	.092	.027	.148	.079	.024	
6.0	.224	.112	.032	.210	.106	.030	.182	.093	.027	.157	.082	.024	.133	.070	.021	
7.0	.205	.102	.029	.192	.096	.027	.167	.084	.024	.143	.073	.021	.121	.063	.018	
8.0	.189	.093	.026	.177	.087	.025	.154	.077	.022	.132	.067	.019	.111	.057	.017	
9.0	.176	.085	.024	.164	.080	.022	.142	.070	.020	.122	.061	.017	.102	.052	.015	
10.0	.164	.079	.022	.153	.074	.021	.133	.065	.018	.113	.056	.016	.095	.048	.014	

ρ_{cc}	80%			70%			50%			30%			10%			0
ρ_w	50%	30%	10%	50%	30%	10%	50%	30%	10%	50%	30%	10%	50%	30%	10%	0
ρ_{fc}	20%			20%			20%			20%			20%			0
RCR	RCR:Room Cavity Ratio						Ceiling Cavity Exitance Coefficients(CCEC)									
0.0	.569	.569	.569	.486	.486	.486	.332	.332	.332	.191	.191	.191	.061	.061	.061	
1.0	.570	.536	.506	.488	.460	.435	.334	.317	.301	.192	.183	.175	.062	.059	.057	
2.0	.565	.515	.474	.484	.444	.410	.332	.307	.286	.191	.179	.167	.061	.058	.055	
3.0	.558	.500	.455	.478	.432	.394	.328	.300	.276	.190	.175	.163	.061	.057	.053	
4.0	.551	.489	.442	.473	.423	.384	.325	.295	.270	.188	.173	.160	.060	.056	.053	
5.0	.543	.480	.434	.467	.415	.377	.321	.290	.266	.186	.170	.158	.060	.056	.052	
6.0	.536	.473	.428	.461	.410	.372	.318	.287	.264	.184	.169	.157	.059	.055	.052	
7.0	.529	.467	.423	.455	.405	.369	.314	.284	.261	.183	.167	.156	.059	.055	.051	
8.0	.522	.462	.420	.450	.401	.366	.311	.281	.260	.181	.166	.155	.059	.054	.051	
9.0	.516	.457	.418	.445	.397	.364	.308	.279	.259	.179	.165	.154	.058	.054	.051	
10.0	.510	.453	.415	.440	.394	.363	.305	.277	.258	.178	.164	.154	.058	.054	.051	

C Range: 0 - 360DEG
C Interval: 22.5DEG
Test Speed: HIGH
Temperature:15DEG
Operators:
Test Date:2020-09-15

γ Range: 0 - 180DEG
 γ Interval: 1.0DEG
Test System:EVERFINE GO-2000A_V1 SYSTEM V2.0.407.13
Humidity:71%
Test Distance:6.700m [K=1.0000]
Remarks:

UGR(Unified Glare Rating) Table

Test:U:230.26V I:0.0374A P:7.7220W PF:0.8969 Freq:49.99Hz Lamp Flux:828.397x1 Lm										
NAME: LEDG95E278W					TYPE:LED			WEIGHT:		
SPEC.:8W					DIM.:			SERIAL No.:1		
MFR.: EVERFINE					SUR.:			Shielding Angle:		
ceiling/cavity	0.7	0.7	0.5	0.5	0.3	0.7	0.7	0.5	0.5	0.3
walls	0.5	0.3	0.5	0.3	0.3	0.5	0.3	0.5	0.3	0.3
working plane	0.2	0.2	0.2	0.2	0.2	0.2	0.2	0.2	0.2	0.2
Room dimensions	Viewed crosswise					Viewed endwise				
x = 2H y = 2H	10.6	11.7	11.5	12.6	13.8	10.6	11.7	11.4	12.6	13.8
3H	14.2	15.3	15.1	16.2	17.4	14.2	15.2	15.1	16.2	17.4
4H	16.3	17.3	17.2	18.2	19.4	16.3	17.3	17.2	18.2	19.4
6H	18.7	19.6	19.6	20.5	21.7	18.7	19.6	19.6	20.5	21.8
8H	19.9	20.8	20.9	21.8	23.0	20.0	20.8	20.9	21.8	23.0
12H	21.4	22.2	22.3	23.2	24.4	21.4	22.3	22.4	23.2	24.5
4H 2H	12.0	13.0	12.9	13.9	15.1	12.0	13.0	12.9	13.9	15.1
3H	15.5	16.4	16.4	17.3	18.6	15.5	16.4	16.4	17.3	18.6
4H	17.5	18.3	18.5	19.3	20.5	17.6	18.3	18.5	19.3	20.6
6H	19.8	20.5	20.8	21.5	22.8	19.9	20.6	20.9	21.6	22.9
8H	21.2	21.8	22.2	22.8	24.1	21.3	21.9	22.3	22.9	24.2
12H	22.8	23.4	23.7	24.4	25.7	22.9	23.5	23.8	24.5	25.8
8H 4H	18.5	19.1	19.5	20.1	21.4	18.5	19.2	19.5	20.2	21.5
6H	20.9	21.5	21.9	22.5	23.8	21.0	21.6	22.0	22.6	23.9
8H	22.3	22.8	23.3	23.9	25.2	22.5	23.0	23.5	24.0	25.3
12H	24.0	24.4	25.0	25.5	26.8	24.2	24.6	25.2	25.6	27.0
12H 4H	18.7	19.3	19.7	20.3	21.6	18.7	19.3	19.7	20.3	21.7
6H	21.4	21.9	22.4	22.9	24.2	21.5	22.0	22.5	23.0	24.3
8H	22.9	23.3	23.9	24.4	25.7	23.0	23.5	24.0	24.5	25.8
Variations with the observer position at spacings:										
S = 1.0H	+ 0.1 / - 0.1					+ 0.1 / - 0.1				
1.5H	+ 0.2 / - 0.2					+ 0.2 / - 0.2				
2.0H	+ 0.2 / - 0.3					+ 0.2 / - 0.3				

CIE Pub.117, 828.4 lm Total Lamp Luminous Flux Correct (8log(F/F0) = -0.7)
 Area: 0.18 m2

C Range: 0 - 360DEG
C Interval: 22.5DEG
Test Speed: HIGH
Temperature:15DEG
Operators:
Test Date:2020-09-15

γ Range: 0 - 180DEG
γ Interval: 1.0DEG
Test System:EVERFINE GO-2000A_V1 SYSTEM V2.0.407.13
Humidity:71%
Test Distance:6.700m [K=1.0000]
Remarks:

UTILIZATION FACTORS TABLE

Test:U:230.26V I:0.0374A P:7.7220W PF:0.8969 Freq:49.99Hz Lamp Flux:828.397x1 Lm		
NAME: LEDG95E278W	TYPE:LED	WEIGHT:
SPEC.:8W	DIM.:	SERIAL No.:1
MFR.: EVERFINE	SUR.:	Shielding Angle:

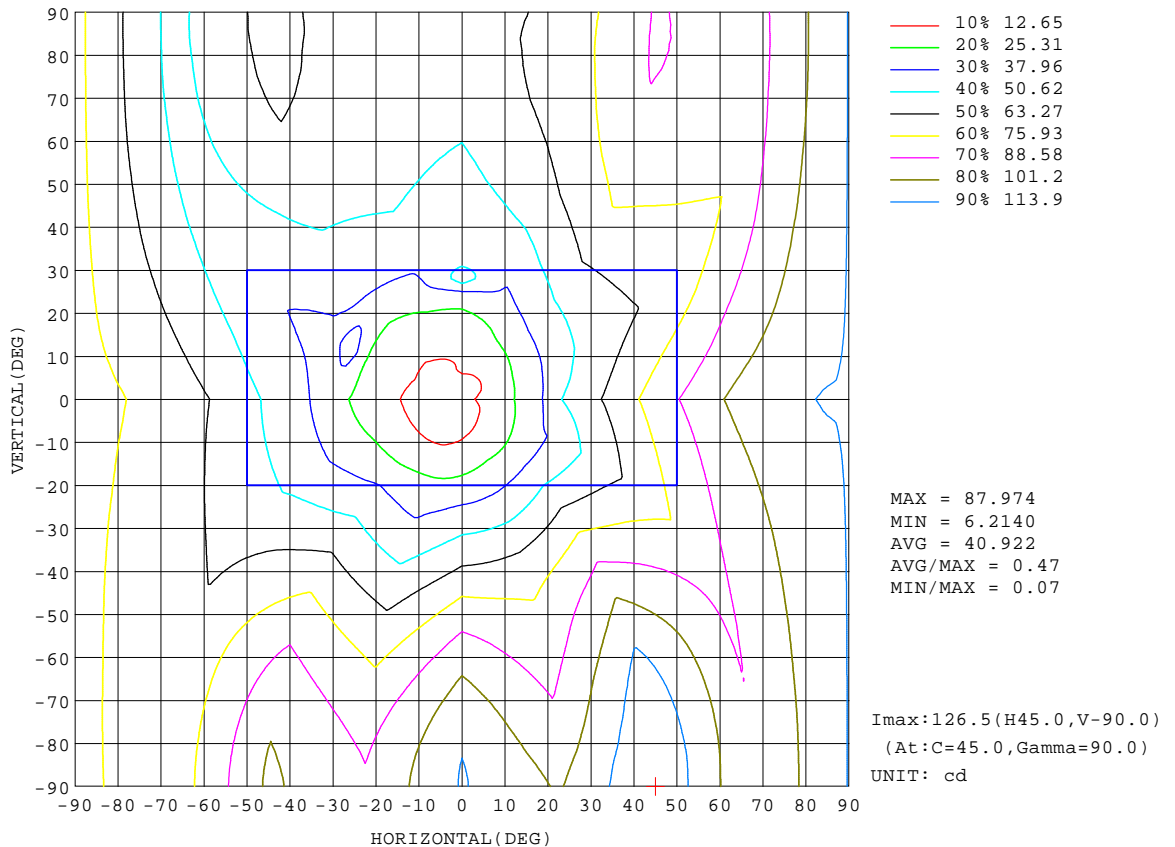
REFLECTANCE										
Ceiling	0.8	0.8	0.8	0.7	0.7	0.7	0.5	0.5	0.5	0
Walls	0.7	0.5	0.3	0.7	0.5	0.3	0.7	0.5	0.3	0
Working plane	0.2	0.2	0.2	0.2	0.2	0.2	0.2	0.2	0.2	0
ROOM INDEX	UTILIZATION FACTORS(PERCENT) $k(RI) \times RCR = 5$									
k = 0.60	34	21	14	32	20	13	29	18	12	5
0.80	42	28	19	40	27	18	35	24	17	7
1.00	50	35	25	46	33	24	40	31	21	10
1.25	56	42	32	52	39	30	45	34	26	13
1.50	62	47	37	57	44	35	49	38	31	15
2.00	70	56	46	64	52	43	55	45	37	19
2.50	75	62	52	69	58	49	58	50	42	22
3.00	79	67	58	73	63	54	61	53	47	25
4.00	85	74	66	78	69	61	66	59	53	29
5.00	88	79	72	81	73	67	68	62	57	31
ROOM INDEX	UF(total)									Direct
According to DIN EN 13032-2 2004			Suspended					SHRNM = 1.25		

C Range: 0 - 360DEG
C Interval: 22.5DEG
Test Speed: HIGH
Temperature:15DEG
Operators:
Test Date:2020-09-15

γ Range: 0 - 180DEG
 γ Interval: 1.0DEG
Test System:EVERFINE GO-2000A_V1 SYSTEM V2.0.407.13
Humidity:71%
Test Distance:6.700m [K=1.0000]
Remarks:

ISOCANDELA DIAGRAM

Test:U:230.26V I:0.0374A P:7.7220W PF:0.8969 Freq:49.99Hz Lamp Flux:828.397x1 lm		
NAME: LEDG95E278W	TYPE:LED	WEIGHT:
SPEC.:8W	DIM.:	SERIAL No.:1
MFR.: EVERFINE	SUR.:	Shielding Angle:

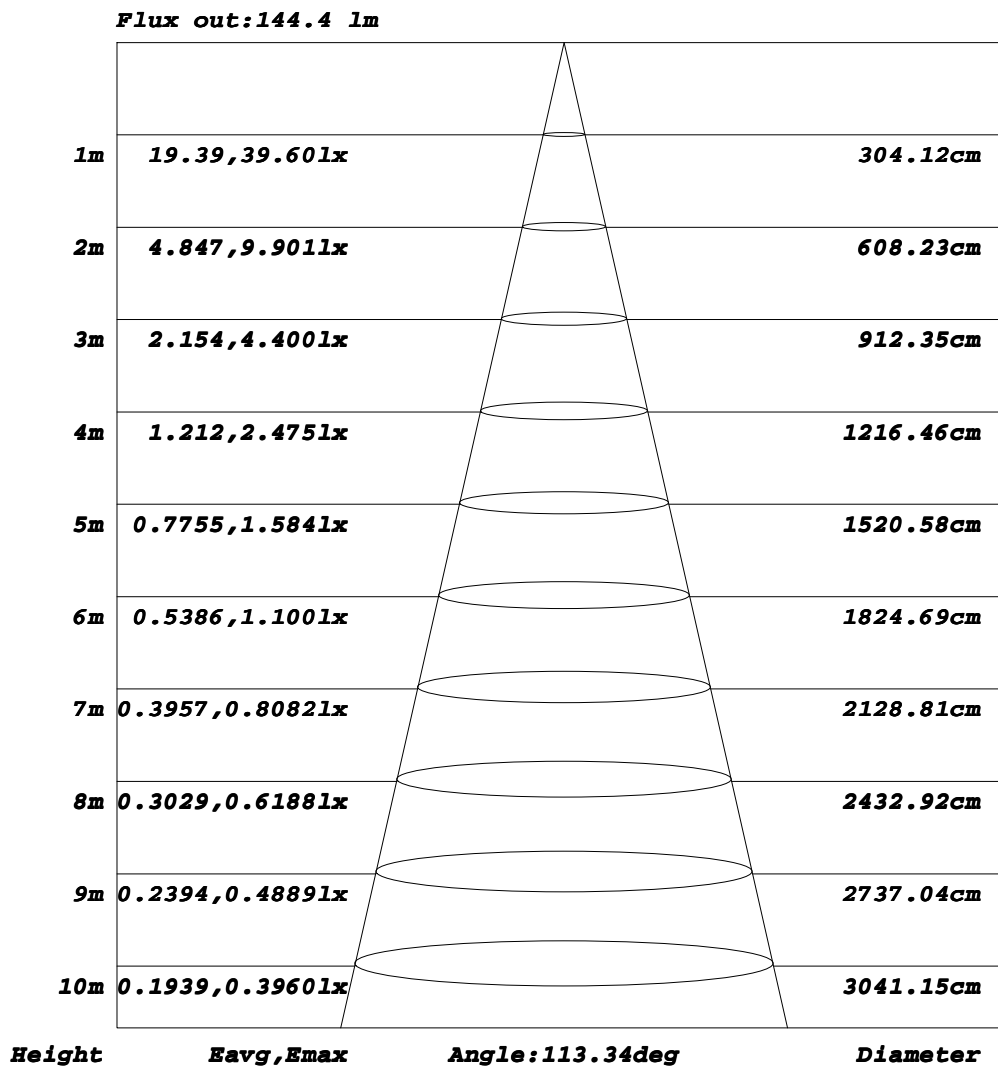


C Range: 0 - 360DEG
C Interval: 22.5DEG
Test Speed: HIGH
Temperature: 15DEG
Operators:
Test Date: 2020-09-15

γ Range: 0 - 180DEG
γ Interval: 1.0DEG
Test System: EVERFINE GO-2000A_V1 SYSTEM V2.0.407.13
Humidity: 71%
Test Distance: 6.700m [K=1.0000]
Remarks:

AAI Figure

Test:U:230.26V I:0.0374A P:7.7220W PF:0.8969 Freq:49.99Hz Lamp Flux:828.397x1 lm		
NAME: LEDG95E278W	TYPE:LED	WEIGHT:
SPEC.:8W	DIM.:	SERIAL No.:1
MFR.: EVERFINE	SUR.:	Shielding Angle:



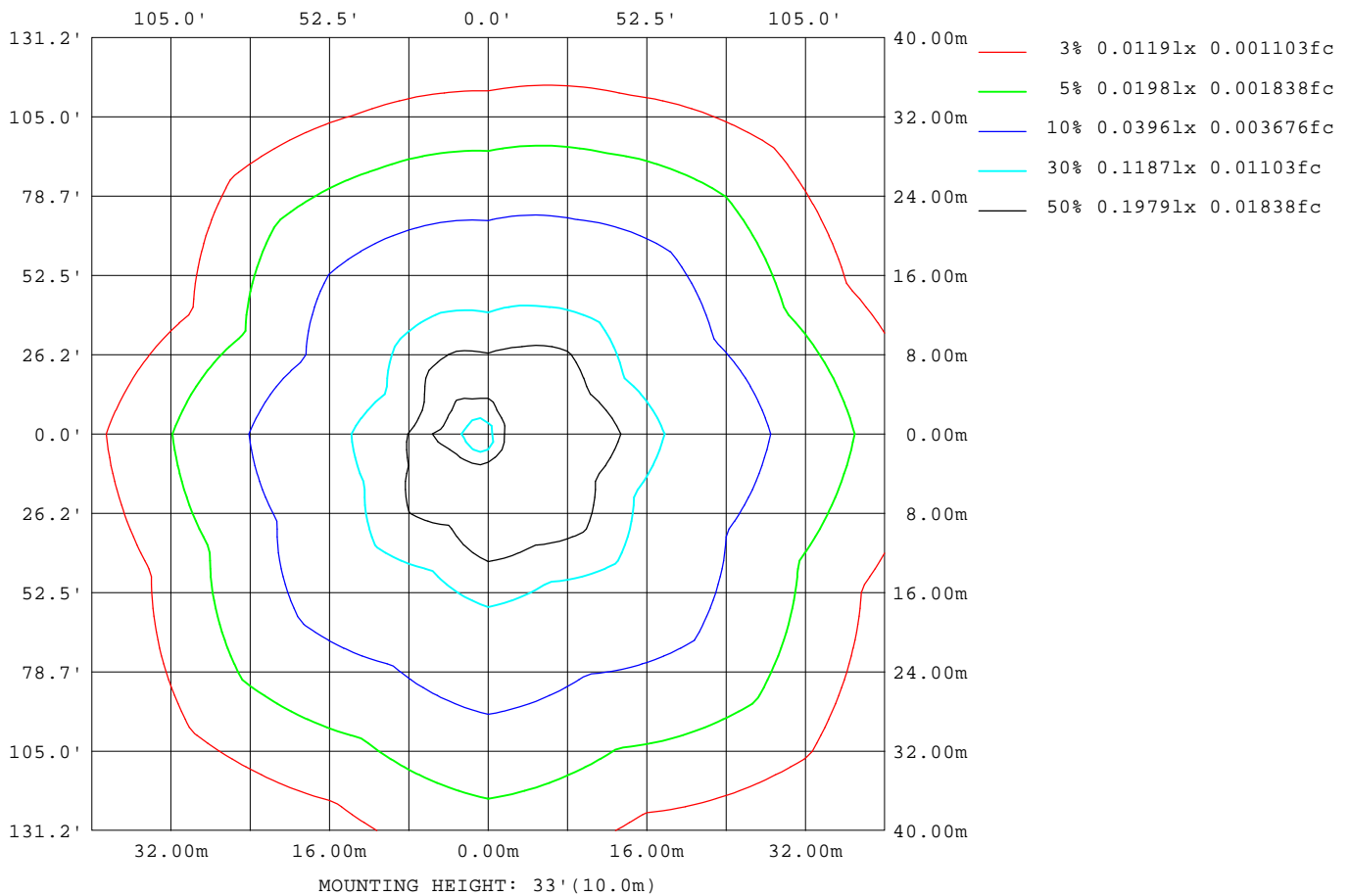
Note: The Curves indicate the illuminated area and the average illumination when the luminaire is at different distance.

C Range: 0 - 360DEG
C Interval: 22.5DEG
Test Speed: HIGH
Temperature: 15DEG
Operators:
Test Date: 2020-09-15

γ Range: 0 - 180DEG
γ Interval: 1.0DEG
Test System: EVERFINE GO-2000A_V1 SYSTEM V2.0.407.13
Humidity: 71%
Test Distance: 6.700m [K=1.0000]
Remarks:

ISOLUX DIAGRAM

Test:U:230.26V I:0.0374A P:7.7220W PF:0.8969 Freq:49.99Hz Lamp Flux:828.397x1 lm		
NAME: LEDG95E278W	TYPE:LED	WEIGHT:
SPEC.:8W	DIM.:	SERIAL No.:1
MFR.: EVERFINE	SUR.:	Shielding Angle:



C Range: 0 - 360DEG
C Interval: 22.5DEG
Test Speed: HIGH
Temperature: 15DEG
Operators:
Test Date: 2020-09-15

γ Range: 0 - 180DEG
γ Interval: 1.0DEG
Test System: EVERFINE GO-2000A_V1 SYSTEM V2.0.407.13
Humidity: 71%
Test Distance: 6.700m [K=1.0000]
Remarks:

LED Avg.L Report

Test:U:230.26V I:0.0374A P:7.7220W PF:0.8969 Freq:49.99Hz Lamp Flux:828.397x1 lm		
NAME: LEDG95E278W	TYPE:LED	WEIGHT:
SPEC.:8W	DIM.:	SERIAL No.:1
MFR.: EVERFINE	SUR.:	Shielding Angle:

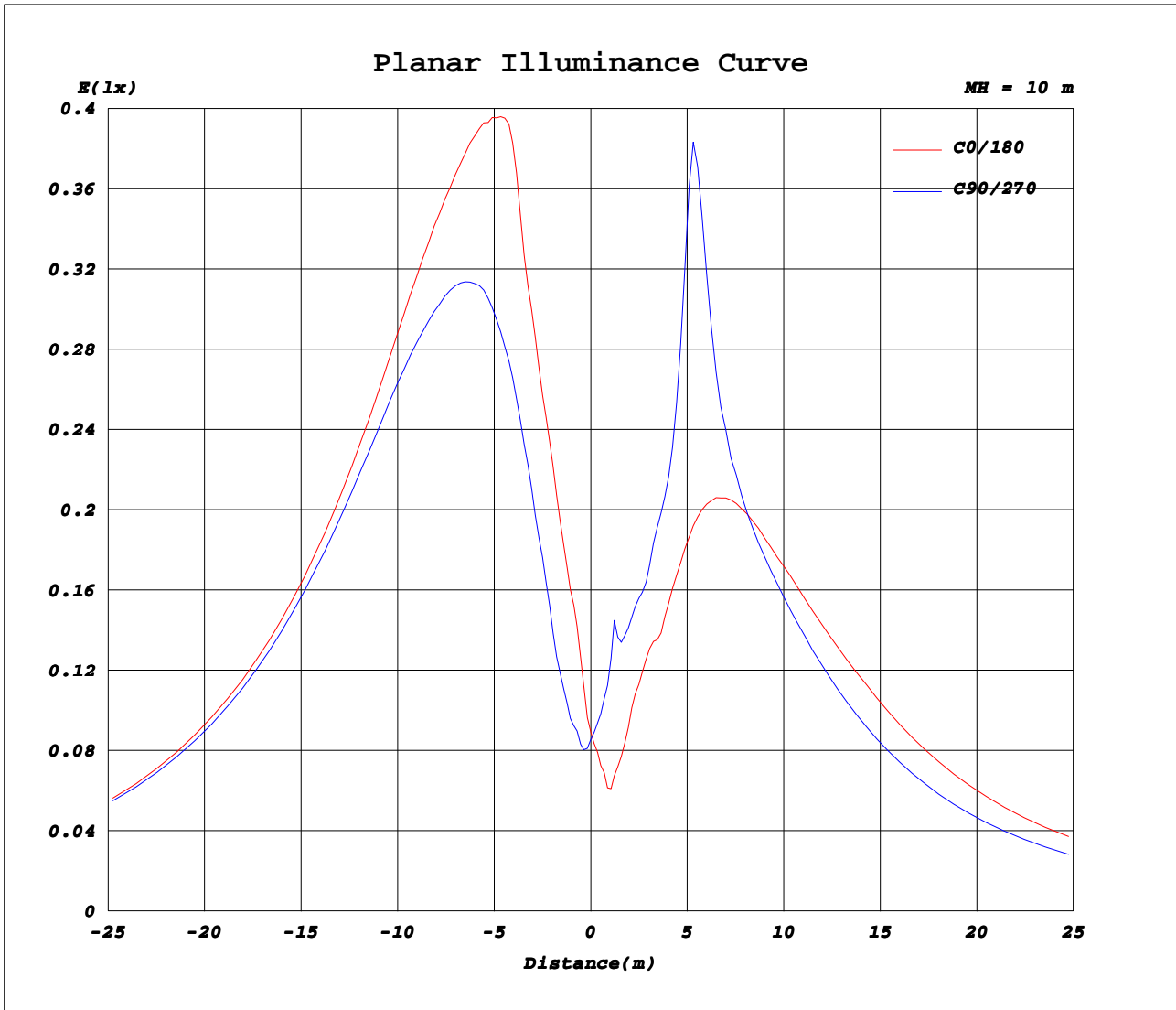
AvgL	cd/m2
L_0~180(65)av	1103
L_0~180(75)av	1929
L_0~180(85)av	5929
L_90~270(65)av	1024
L_90~270(75)av	1788
L_90~270(85)av	5493
L_45(65)av	1141
L_45(75)av	2003
L_45(85)av	6177

Standard: GB/T 29293-2012

C Range: 0 - 360DEG
C Interval: 22.5DEG
Test Speed: HIGH
Temperature:15DEG
Operators:
Test Date:2020-09-15

γ Range: 0 - 180DEG
γ Interval: 1.0DEG
Test System:EVERFINE GO-2000A_V1 SYSTEM V2.0.407.13
Humidity:71%
Test Distance:6.700m [K=1.0000]
Remarks:

Planar Illuminance Curve



C Range: 0 - 360DEG
C Interval: 22.5DEG
Test Speed: HIGH
Temperature: 15DEG
Operators:
Test Date: 2020-09-15

γ Range: 0 - 180DEG
γ Interval: 1.0DEG
Test System: EVERFINE GO-2000A_V1 SYSTEM V2.0.407.13
Humidity: 71%
Test Distance: 6.700m [K=1.0000]
Remarks:

LUMINOUS DISTRIBUTION INTENSITY DATA

Test:U:230.26V I:0.0374A P:7.7220W PF:0.8969 Freq:49.99Hz Lamp Flux:828.397x1 lm		
NAME: LEDG95E278W	TYPE:LED	WEIGHT:
SPEC.:8W	DIM.:	SERIAL No.:1
MFR.: EVERFINE	SUR.:	Shielding Angle:

Table--1

UNIT: cd

C(DEG) γ (DEG)	0	22.5	45	67.5	90	112.5	135	157.5	180	202.5	225	247.5	270	292.5	315	337.5			
0	8.62	8.62	8.62	8.62	8.62	8.62	8.62	8.62	8.62	8.62	8.62	8.62	8.62	8.62	8.62	8.62			
5	14.9	12.9	12.0	10.6	9.41	8.48	7.41	6.73	6.01	7.72	8.83	9.72	11.5	11.7	11.7	13.2			
10	21.0	20.3	18.4	16.1	13.4	11.4	10.15	9.92	8.49	10.8	11.0	12.5	14.5	18.1	18.7	20.8			
15	29.0	27.6	25.6	24.4	20.7	17.4	16.9	15.1	12.8	14.5	14.7	17.3	17.7	23.6	26.7	30.0			
20	40.5	36.1	35.0	33.1	29.7	27.8	24.7	22.7	16.1	18.8	18.8	23.5	24.1	28.8	36.0	38.7			
25	51.4	41.7	45.1	41.3	39.0	34.8	34.5	28.8	22.6	30.1	25.9	30.4	38.2	36.1	43.5	46.9			
30	58.0	49.2	55.1	49.9	48.3	39.5	43.2	34.6	29.8	38.7	34.0	36.3	53.6	41.1	50.6	53.6			
35	64.6	55.4	64.7	58.5	57.1	45.2	50.3	40.4	36.2	35.5	40.7	42.4	43.9	46.4	57.0	58.4			
40	71.6	60.8	74.2	66.3	65.8	51.0	57.5	46.0	41.8	35.5	44.8	46.6	42.7	50.1	63.4	61.5			
45	78.8	66.2	82.8	72.3	74.9	57.2	64.5	51.0	47.0	37.2	47.7	50.0	44.6	54.4	69.1	64.6			
50	85.0	70.7	90.8	76.3	83.1	63.1	71.7	54.9	52.2	39.0	50.4	52.3	46.8	58.6	74.3	66.9			
55	91.1	74.8	98.5	79.2	90.5	68.6	78.7	58.3	57.8	40.4	53.4	54.0	48.9	61.4	78.7	68.9			
60	96.8	78.5	105	81.6	96.9	73.7	85.0	61.1	62.2	41.8	56.3	55.3	51.1	63.9	82.8	71.8			
65	102	81.7	111	84.5	103	78.2	90.8	63.5	66.3	43.2	59.1	56.1	53.2	65.9	86.2	74.8			
70	105	84.1	116	87.5	107	82.3	95.7	65.7	69.6	44.1	61.6	56.5	54.9	67.5	88.6	77.6			
75	107	85.5	120	90.3	111	85.7	99.6	67.3	72.2	44.9	63.8	56.3	56.0	68.3	90.3	80.1			
80	110	86.5	122	93.4	113	88.5	103	68.1	74.2	45.4	65.3	55.9	56.8	68.7	91.7	82.5			
85	110	87.0	124	96.7	115	90.5	105	68.6	75.6	45.7	66.2	55.7	57.3	68.7	92.4	84.1			
90	110	87.0	124	99.5	116	91.8	106	69.2	76.8	45.8	66.6	54.9	56.7	67.9	92.1	85.0			
95	110	86.7	124	102	115	92.1	106	69.2	76.9	45.4	66.0	53.7	55.8	66.4	91.1	85.8			
100	108	85.6	123	103	114	91.7	106	69.0	76.2	44.8	64.7	52.8	54.6	64.9	89.7	86.1			
105	106	84.0	120	104	112	90.4	105	69.3	76.0	44.3	63.8	51.4	53.2	62.7	87.3	85.4			
110	102	81.5	117	103	110	88.6	103	68.8	74.7	43.5	61.9	49.9	51.4	60.3	84.1	83.6			
115	96.5	78.3	112	102	106	85.4	99.7	67.5	72.7	42.2	59.4	48.4	49.1	57.5	80.7	81.6			
120	89.9	74.6	107	100	102	81.4	95.8	66.1	70.3	40.4	56.6	46.7	46.2	54.1	76.5	78.7			
125	82.6	70.6	101	97.2	96.6	76.9	91.2	65.4	66.9	38.4	53.4	44.6	43.1	50.0	71.3	74.6			
130	74.1	66.2	94.5	93.1	90.6	71.8	85.5	64.4	62.5	36.5	49.7	42.6	39.9	45.5	65.1	69.7			
135	64.9	61.3	86.6	87.0	83.4	66.4	78.9	61.9	57.9	34.5	45.4	40.7	36.8	40.6	59.6	64.1			
140	55.5	55.0	78.8	81.1	75.1	60.2	71.6	59.3	52.9	32.2	40.1	37.3	32.6	34.9	52.8	57.8			
145	45.7	48.4	68.5	72.7	65.1	53.6	64.0	56.3	47.6	28.6	32.9	31.4	29.7	28.6	42.8	49.2			
150	35.8	41.7	54.0	58.6	55.4	46.2	56.9	48.4	41.6	25.3	24.8	22.7	23.5	20.7	31.2	36.5			
155	26.7	30.4	37.3	43.9	45.4	38.4	42.3	36.3	32.7	21.9	17.2	14.3	14.2	14.0	17.3	23.1			
160	15.8	19.4	22.1	29.5	31.6	30.5	23.7	18.3	21.6	15.7	10.3	6.97	6.72	7.84	9.36	12.5			
165	2.40	5.93	9.70	12.1	13.2	15.6	8.55	7.44	10.3	5.99	4.39	2.95	2.40	2.13	1.12	2.92			
170	0.47	0.50	0.56	0.60	0.81	1.13	0.91	0.65	0.78	0.73	0.68	0.62	0.56	0.52	0.53	0.52			
175	0.34	0.35	0.39	0.38	0.41	0.40	0.42	0.38	0.40	0.40	0.39	0.39	0.36	0.37	0.34	0.37			
180	0.25	0.25	0.26	0.26	0.27	0.27	0.27	0.28	0.26	0.26	0.26	0.26	0.27	0.28	0.28	0.29			

C Range: 0 - 360DEG
C Interval: 22.5DEG
Test Speed: HIGH
Temperature:15DEG
Operators:
Test Date:2020-09-15

γ Range: 0 - 180DEG
γ Interval: 1.0DEG
Test System:EVERFINE GO-2000A_V1 SYSTEM V2.0.407.13
Humidity:71%
Test Distance:6.700m [K=1.0000]
Remarks: