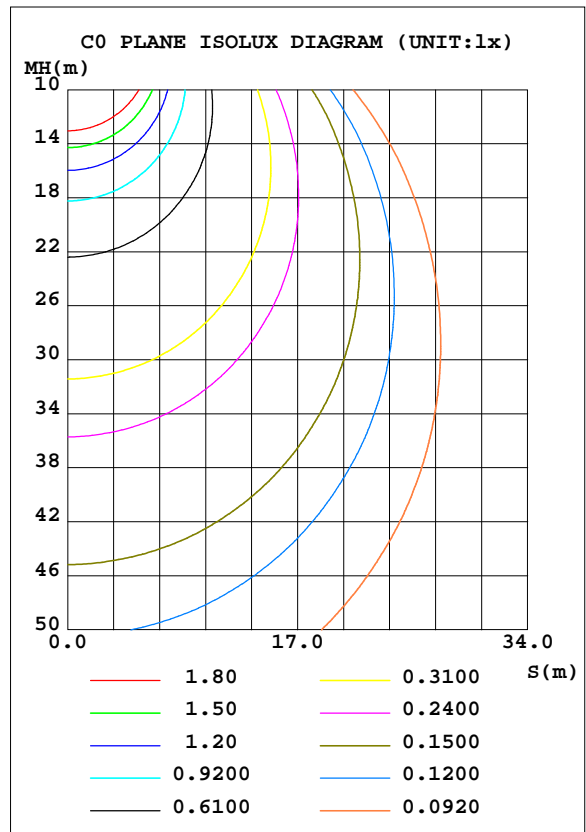
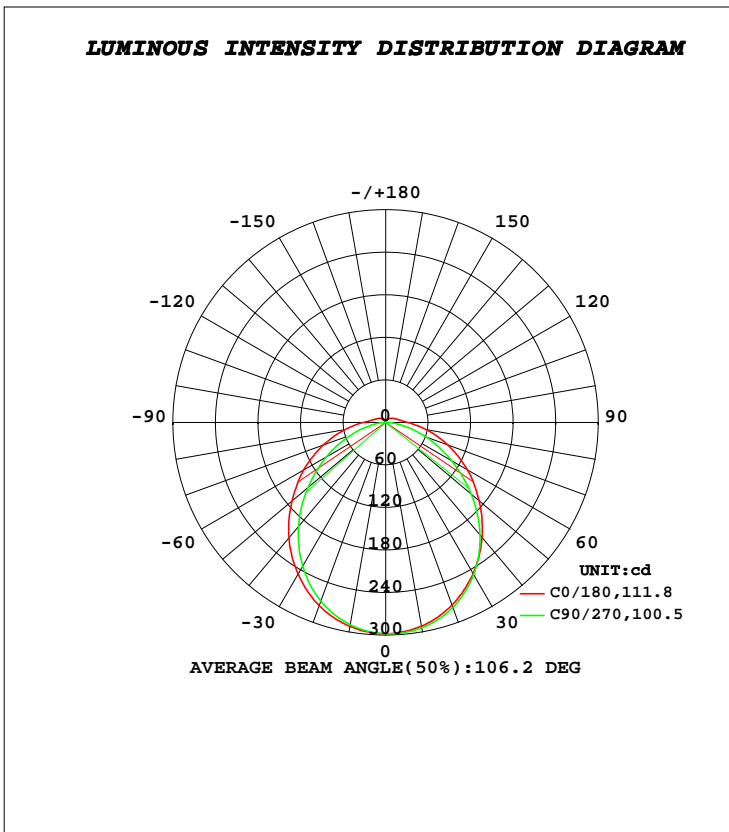


**LUMINAIRE PHOTOMETRIC TEST REPORT**

Test:U:230.24V I:0.0449A P:9.2586W PF:0.8965 Freq:49.98Hz Lamp Flux:878.42x1 lm		
NAME: LEDFLD10W4K	TYPE:LED	WEIGHT:
SPEC.:10W	DIM.:	SERIAL No.:1
MFR.: EVERFINE	SUR.:	Shielding Angle:

DATA OF LAMP		PHOTOMETRIC DATA				Eff: 94.88 lm/W
MODEL	G24D	I <sub>max</sub> (cd)	298.2	S/MH(C0/180)	1.24	
NOMINAL POWER(W)	10	LOR(%)	100.0	S/MH(C90/270)	1.18	
RATED VOLTAGE(V)	230	TOTAL FLUX(lm)	878.42	η UP, DN(C0-180)	3.0, 48.5	
NOMINAL FLUX(lm)	878.42	CIE CLASS	DIRECT	η UP, DN(C180-360)	2.7, 45.8	
LAMPS INSIDE	1	η up(%)	5.7	CIBSE SHR NOM	1.25	
TEST VOLTAGE(V)	230	η down(%)	94.3	CIBSE SHR MAX	1.35	



**C Range: 0 - 360DEG**  
**C Interval: 22.5DEG**  
**Test Speed: HIGH**  
**Temperature: 15DEG**  
**Operators:**  
**Test Date: 2020-09-15**

**γ Range: 0 - 180DEG**  
**γ Interval: 1.0DEG**  
**Test System: EVERFINE GO-2000A\_V1 SYSTEM V2.0.407.13**  
**Humidity: 71%**  
**Test Distance: 6.700m [K=1.0000]**  
**Remarks:**

**ZONAL FLUX DIAGRAM**

**ZONAL FLUX DIAGRAM:**

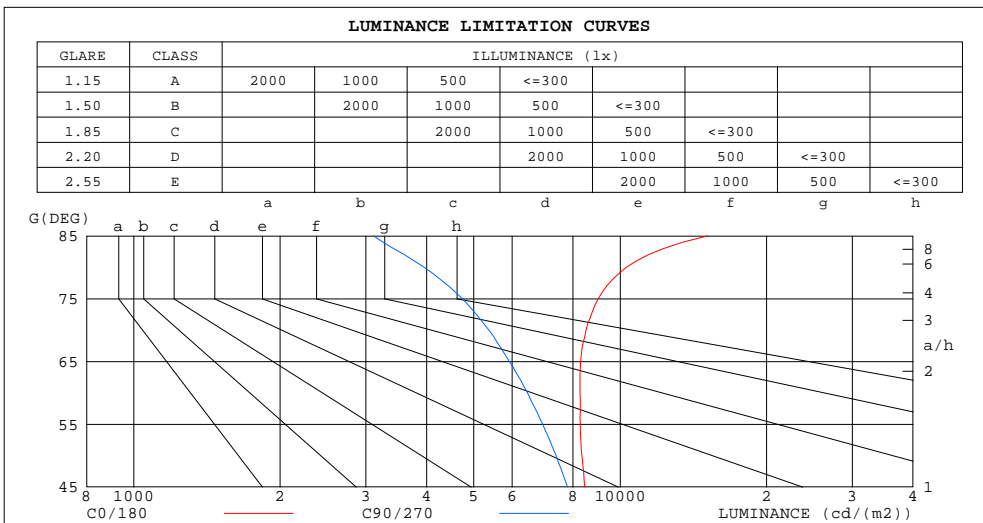
$\gamma$	C0	C45	C90	C135	C180	C225	C270	C315	$\gamma$	$\Phi$ zone	$\Phi$ total	%lum,lamp	
10	291.6	293.9	294.1	293.5	291.9	289.4	289.6	290.6	0- 10	28.15	28.15	3.2,3.2	
20	274.0	278.0	277.5	277.1	274.8	269.0	268.2	270.9	10- 20	80.17	108.3	12.3,12.3	
30	246.5	250.2	248.1	249.3	247.2	237.2	234.1	240.2	20- 30	119.8	228.1	26,26	
40	211.6	212.9	207.0	212.2	212.5	196.5	191.4	201.4	30- 40	141.2	369.3	42,42	
50	172.3	169.2	157.6	169.9	172.7	152.6	143.6	158.5	40- 50	142.2	511.5	58.2,58.2	
60	132.8	124.2	107.0	126.5	133.4	109.8	95.95	116.3	50- 60	125.2	636.7	72.5,72.5	
70	93.45	82.79	61.02	86.11	94.25	71.91	52.79	77.66	60- 70	96.68	733.4	83.5,83.5	
80	57.44	46.63	22.79	51.06	58.17	39.59	17.92	44.61	70- 80	62.82	796.2	90.6,90.6	
90	31.41	22.21	2.031	25.68	31.81	18.69	0.9217	22.63	80- 90	32.29	828.5	94.3,94.3	
100	20.48	13.39	0.9165	15.61	20.02	11.38	0.6425	14.35	90-100	16.62	845.1	96.2,96.2	
110	15.39	9.454	1.008	11.21	14.97	8.247	0.7372	10.47	100-110	10.98	856.1	97.5,97.5	
120	12.02	7.138	1.228	8.476	11.75	6.428	1.068	7.736	110-120	7.857	864.0	98.4,98.4	
130	9.321	5.594	1.449	6.575	9.166	5.219	1.329	5.401	120-130	5.567	869.5	99,99	
140	7.101	4.428	1.650	5.169	7.032	4.321	1.616	4.484	130-140	3.838	873.4	99.4,99.4	
150	5.190	3.573	1.830	4.081	5.284	3.634	1.868	3.980	140-150	2.549	875.9	99.7,99.7	
160	3.737	2.879	2.012	3.227	3.899	2.987	2.044	3.011	150-160	1.527	877.4	99.9,99.9	
170	2.534	2.270	2.138	2.459	2.737	2.391	2.195	2.192	160-170	0.7569	878.2	100,100	
180	2.244	2.248	2.249	2.246	2.269	2.266	2.255	2.253	170-180	0.2178	878.4	100,100	
DEG	LUMINOUS INTENSITY:cd									UNIT:lm			

**C Range: 0 - 360DEG**  
**C Interval: 22.5DEG**  
**Test Speed: HIGH**  
**Temperature:15DEG**  
**Operators:**  
**Test Date:2020-09-15**

**$\gamma$  Range: 0 - 180DEG**  
 **$\gamma$  Interval: 1.0DEG**  
**Test System:EVERFINE GO-2000A\_V1 SYSTEM V2.0.407.13**  
**Humidity:71%**  
**Test Distance:6.700m [K=1.0000]**  
**Remarks:**

**LUMINANCE LIMITATION CURVES**

Test:U:230.24V I:0.0449A P:9.2586W PF:0.8965 Freq:49.98Hz Lamp Flux:878.42x1 lm		
NAME: LEDFLD10W4K	TYPE:LED	WEIGHT:
SPEC.:10W	DIM.:	SERIAL No.:1
MFR.: EVERFINE	SUR.:	Shielding Angle:



LUMINANCE cd/(m2)		
G(DEG)	C0/180	C90/270
85	15141	3111
80	10300	3951
75	9016	4734
70	8508	5371
65	8293	5919
60	8273	6445
55	8275	6926
50	8346	7380
45	8460	7790

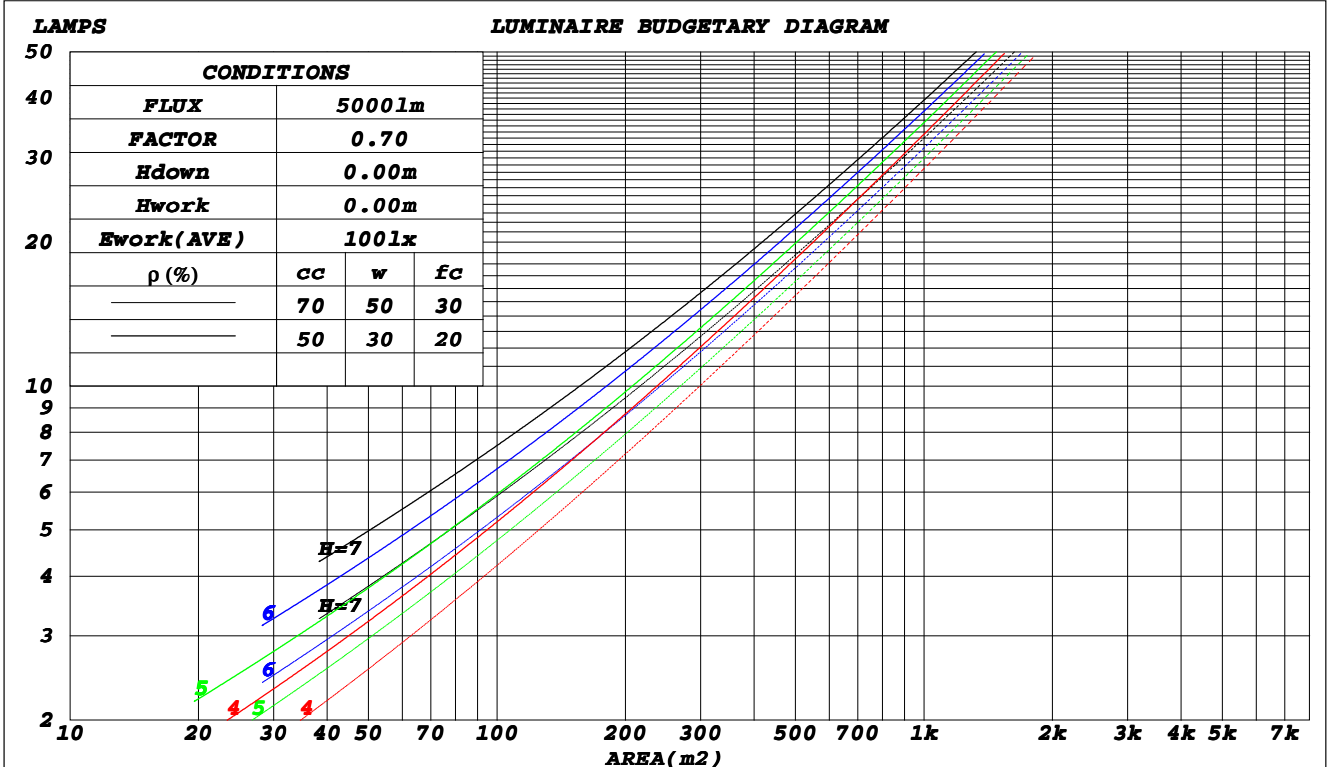
**C Range: 0 - 360DEG**  
**C Interval: 22.5DEG**  
**Test Speed: HIGH**  
**Temperature: 15DEG**  
**Operators:**  
**Test Date: 2020-09-15**

**γ Range: 0 - 180DEG**  
**γ Interval: 1.0DEG**  
**Test System: EVERFINE GO-2000A\_V1 SYSTEM V2.0.407.13**  
**Humidity: 71%**  
**Test Distance: 6.700m [K=1.0000]**  
**Remarks:**

CU AND LUMINAIRE BUDGETARY ESTIMATE DIAGRAM

Test:U:230.24V I:0.0449A P:9.2586W PF:0.8965 Freq:49.98Hz Lamp Flux:878.42x1 lm		
NAME: LEDFLD10W4K	TYPE:LED	WEIGHT:
SPEC.:10W	DIM.:	SERIAL No.:1
MFR.: EVERFINE	SUR.:	Shielding Angle:

$\rho_{cc}$	80%			70%			50%			30%			10%			0
$\rho_w$	50%	30%	10%	50%	30%	10%	50%	30%	10%	50%	30%	10%	50%	30%	10%	0
$\rho_{fc}$	20%			20%			20%			20%			20%			0
<b>RCR</b>	<b>RCR:Room Cavity Ratio</b>															
	<b>Coefficients of Utilization(CU)</b>															
0.0	1.18	1.18	1.18	1.14	1.14	1.14	1.08	1.08	1.08	1.02	1.02	1.02	.97	.97	.97	.94
1.0	1.02	.97	.93	.99	.95	.91	.93	.90	.87	.89	.86	.83	.84	.82	.80	.77
2.0	.88	.81	.76	.86	.80	.74	.82	.76	.72	.77	.73	.69	.74	.70	.67	.64
3.0	.78	.69	.63	.76	.68	.62	.72	.65	.60	.68	.63	.58	.65	.60	.57	.54
4.0	.69	.60	.53	.67	.59	.53	.64	.57	.51	.61	.55	.50	.58	.53	.49	.46
5.0	.62	.53	.46	.60	.52	.45	.57	.50	.44	.55	.48	.43	.52	.47	.42	.40
6.0	.55	.46	.40	.54	.46	.40	.52	.44	.39	.50	.43	.38	.47	.42	.37	.35
7.0	.50	.42	.35	.49	.41	.35	.47	.40	.34	.45	.39	.34	.43	.38	.33	.31
8.0	.46	.37	.32	.45	.37	.31	.43	.36	.31	.41	.35	.30	.40	.34	.30	.28
9.0	.42	.34	.28	.41	.34	.28	.40	.33	.28	.38	.32	.27	.37	.31	.27	.25
10.0	.39	.31	.26	.38	.31	.26	.37	.30	.25	.35	.29	.25	.34	.29	.24	.23



C Range: 0 - 360DEG  
 C Interval: 22.5DEG  
 Test Speed: HIGH  
 Temperature: 15DEG  
 Operators:  
 Test Date: 2020-09-15

$\gamma$  Range: 0 - 180DEG  
 $\gamma$  Interval: 1.0DEG  
 Test System: EVERFINE GO-2000A\_V1 SYSTEM V2.0.407.13  
 Humidity: 71%  
 Test Distance: 6.700m [K=1.0000]  
 Remarks:

**WEC AND CCEC**

Test:U:230.24V I:0.0449A P:9.2586W PF:0.8965 Freq:49.98Hz Lamp Flux:878.42x1 lm		
NAME: LEDFLD10W4K	TYPE:LED	WEIGHT:
SPEC.:10W	DIM.:	SERIAL No.:1
MFR.: EVERFINE	SUR.:	Shielding Angle:

$\rho_{cc}$	80%			70%			50%			30%			10%			0
$\rho_w$	50%	30%	10%	50%	30%	10%	50%	30%	10%	50%	30%	10%	50%	30%	10%	0
$\rho_{fc}$	20%			20%			20%			20%			20%			0
<b>RCR</b>	<b>RCR:Room Cavity Ratio</b>						<b>Wall Exitance Coefficients(WEC)</b>									
0.0																
1.0	.326	.186	.059	.317	.181	.058	.301	.173	.055	.286	.165	.053	.272	.157	.051	
2.0	.298	.163	.050	.290	.160	.049	.275	.153	.048	.262	.147	.046	.249	.141	.044	
3.0	.272	.145	.043	.265	.142	.043	.252	.137	.041	.240	.131	.040	.228	.127	.039	
4.0	.249	.130	.038	.243	.127	.038	.231	.123	.037	.220	.118	.036	.210	.114	.035	
5.0	.230	.117	.034	.224	.115	.034	.214	.111	.033	.204	.107	.032	.194	.104	.031	
6.0	.212	.107	.030	.207	.105	.030	.198	.101	.030	.189	.098	.029	.181	.095	.028	
7.0	.197	.098	.028	.193	.096	.027	.184	.093	.027	.176	.090	.026	.169	.088	.026	
8.0	.184	.090	.025	.180	.089	.025	.172	.086	.025	.165	.084	.024	.158	.081	.024	
9.0	.173	.083	.023	.169	.082	.023	.162	.080	.023	.155	.078	.022	.149	.076	.022	
10.0	.162	.078	.022	.159	.077	.021	.152	.075	.021	.146	.073	.021	.140	.071	.020	

$\rho_{cc}$	80%			70%			50%			30%			10%			0
$\rho_w$	50%	30%	10%	50%	30%	10%	50%	30%	10%	50%	30%	10%	50%	30%	10%	0
$\rho_{fc}$	20%			20%			20%			20%			20%			0
<b>RCR</b>	<b>RCR:Room Cavity Ratio</b>						<b>Ceiling Cavity Exitance Coefficients(CCEC)</b>									
0.0	.234	.234	.234	.200	.200	.200	.136	.136	.136	.078	.078	.078	.025	.025	.025	
1.0	.225	.200	.177	.193	.171	.152	.132	.118	.105	.076	.068	.061	.024	.022	.020	
2.0	.217	.176	.141	.186	.151	.122	.127	.105	.085	.073	.061	.050	.024	.020	.016	
3.0	.209	.158	.118	.179	.137	.102	.123	.095	.072	.071	.055	.042	.023	.018	.014	
4.0	.201	.145	.103	.173	.126	.089	.119	.088	.063	.069	.051	.037	.022	.017	.012	
5.0	.194	.135	.092	.166	.117	.080	.115	.082	.056	.066	.048	.033	.021	.016	.011	
6.0	.187	.127	.084	.160	.110	.073	.111	.077	.052	.064	.045	.031	.021	.015	.010	
7.0	.180	.120	.078	.155	.104	.068	.107	.073	.048	.062	.043	.029	.020	.014	.010	
8.0	.173	.114	.074	.149	.099	.064	.103	.070	.046	.060	.041	.027	.019	.013	.009	
9.0	.167	.109	.070	.144	.095	.061	.100	.067	.044	.058	.039	.026	.019	.013	.009	
10.0	.161	.105	.068	.139	.091	.059	.097	.064	.042	.056	.038	.025	.018	.012	.008	

**C Range: 0 - 360DEG**  
**C Interval: 22.5DEG**  
**Test Speed: HIGH**  
**Temperature:15DEG**  
**Operators:**  
**Test Date:2020-09-15**

**$\gamma$  Range: 0 - 180DEG**  
 **$\gamma$  Interval: 1.0DEG**  
**Test System:EVERFINE GO-2000A\_V1 SYSTEM V2.0.407.13**  
**Humidity:71%**  
**Test Distance:6.700m [K=1.0000]**  
**Remarks:**

**UGR(Unified Glare Rating) Table**

Test:U:230.24V I:0.0449A P:9.2586W PF:0.8965 Freq:49.98Hz Lamp Flux:878.42x1 lm		
NAME: LEDFLD10W4K	TYPE:LED	WEIGHT:
SPEC.:10W	DIM.:	SERIAL No.:1
MFR.: EVERFINE	SUR.:	Shielding Angle:

<b>ceiling/cavity</b>	<b>0.7</b>	<b>0.7</b>	<b>0.5</b>	<b>0.5</b>	<b>0.3</b>	<b>0.7</b>	<b>0.7</b>	<b>0.5</b>	<b>0.5</b>	<b>0.3</b>
<b>walls</b>	<b>0.5</b>	<b>0.3</b>	<b>0.5</b>	<b>0.3</b>	<b>0.3</b>	<b>0.5</b>	<b>0.3</b>	<b>0.5</b>	<b>0.3</b>	<b>0.3</b>
<b>working plane</b>	<b>0.2</b>	<b>0.2</b>	<b>0.2</b>	<b>0.2</b>	<b>0.2</b>	<b>0.2</b>	<b>0.2</b>	<b>0.2</b>	<b>0.2</b>	<b>0.2</b>
<b>Room dimensions</b>	<b>Viewed crosswise</b>					<b>Viewed endwise</b>				
<b>x = 2H y = 2H</b>	<b>20.5</b>	<b>22.0</b>	<b>20.9</b>	<b>22.3</b>	<b>22.6</b>	<b>19.5</b>	<b>20.9</b>	<b>19.8</b>	<b>21.2</b>	<b>21.5</b>
<b>3H</b>	<b>22.4</b>	<b>23.7</b>	<b>22.7</b>	<b>24.0</b>	<b>24.4</b>	<b>20.7</b>	<b>22.0</b>	<b>21.1</b>	<b>22.4</b>	<b>22.7</b>
<b>4H</b>	<b>23.2</b>	<b>24.5</b>	<b>23.6</b>	<b>24.9</b>	<b>25.2</b>	<b>21.2</b>	<b>22.4</b>	<b>21.6</b>	<b>22.8</b>	<b>23.2</b>
<b>6H</b>	<b>24.1</b>	<b>25.3</b>	<b>24.5</b>	<b>25.7</b>	<b>26.1</b>	<b>21.5</b>	<b>22.6</b>	<b>21.9</b>	<b>23.0</b>	<b>23.4</b>
<b>8H</b>	<b>24.5</b>	<b>25.7</b>	<b>25.0</b>	<b>26.1</b>	<b>26.5</b>	<b>21.5</b>	<b>22.7</b>	<b>22.0</b>	<b>23.1</b>	<b>23.5</b>
<b>12H</b>	<b>25.0</b>	<b>26.1</b>	<b>25.5</b>	<b>26.5</b>	<b>26.9</b>	<b>21.6</b>	<b>22.7</b>	<b>22.0</b>	<b>23.1</b>	<b>23.5</b>
<b>4H 2H</b>	<b>21.0</b>	<b>22.3</b>	<b>21.4</b>	<b>22.7</b>	<b>23.0</b>	<b>20.2</b>	<b>21.5</b>	<b>20.6</b>	<b>21.8</b>	<b>22.2</b>
<b>3H</b>	<b>23.1</b>	<b>24.2</b>	<b>23.5</b>	<b>24.6</b>	<b>25.0</b>	<b>21.6</b>	<b>22.8</b>	<b>22.1</b>	<b>23.2</b>	<b>23.6</b>
<b>4H</b>	<b>24.2</b>	<b>25.2</b>	<b>24.6</b>	<b>25.6</b>	<b>26.1</b>	<b>22.2</b>	<b>23.2</b>	<b>22.7</b>	<b>23.7</b>	<b>24.1</b>
<b>6H</b>	<b>25.2</b>	<b>26.1</b>	<b>25.7</b>	<b>26.6</b>	<b>27.1</b>	<b>22.6</b>	<b>23.5</b>	<b>23.1</b>	<b>24.0</b>	<b>24.5</b>
<b>8H</b>	<b>25.8</b>	<b>26.6</b>	<b>26.3</b>	<b>27.1</b>	<b>27.6</b>	<b>22.8</b>	<b>23.6</b>	<b>23.3</b>	<b>24.1</b>	<b>24.6</b>
<b>12H</b>	<b>26.4</b>	<b>27.1</b>	<b>26.9</b>	<b>27.6</b>	<b>28.2</b>	<b>22.8</b>	<b>23.6</b>	<b>23.4</b>	<b>24.1</b>	<b>24.6</b>
<b>8H 4H</b>	<b>24.4</b>	<b>25.3</b>	<b>24.9</b>	<b>25.7</b>	<b>26.2</b>	<b>22.7</b>	<b>23.6</b>	<b>23.2</b>	<b>24.1</b>	<b>24.6</b>
<b>6H</b>	<b>25.7</b>	<b>26.4</b>	<b>26.3</b>	<b>26.9</b>	<b>27.5</b>	<b>23.4</b>	<b>24.1</b>	<b>23.9</b>	<b>24.6</b>	<b>25.1</b>
<b>8H</b>	<b>26.4</b>	<b>27.1</b>	<b>27.0</b>	<b>27.6</b>	<b>28.2</b>	<b>23.6</b>	<b>24.2</b>	<b>24.1</b>	<b>24.7</b>	<b>25.3</b>
<b>12H</b>	<b>27.3</b>	<b>27.8</b>	<b>27.8</b>	<b>28.3</b>	<b>28.9</b>	<b>23.8</b>	<b>24.3</b>	<b>24.3</b>	<b>24.8</b>	<b>25.4</b>
<b>12H 4H</b>	<b>24.4</b>	<b>25.2</b>	<b>24.9</b>	<b>25.7</b>	<b>26.2</b>	<b>22.9</b>	<b>23.6</b>	<b>23.4</b>	<b>24.1</b>	<b>24.7</b>
<b>6H</b>	<b>25.8</b>	<b>26.4</b>	<b>26.3</b>	<b>27.0</b>	<b>27.5</b>	<b>23.6</b>	<b>24.2</b>	<b>24.2</b>	<b>24.8</b>	<b>25.3</b>
<b>8H</b>	<b>26.6</b>	<b>27.1</b>	<b>27.2</b>	<b>27.7</b>	<b>28.3</b>	<b>23.9</b>	<b>24.5</b>	<b>24.5</b>	<b>25.0</b>	<b>25.6</b>
<b>Variations with the observer position at spacings:</b>										
<b>S = 1.0H</b>	<b>+ 0.1 / - 0.2</b>					<b>+ 0.2 / - 0.2</b>				
<b>1.5H</b>	<b>+ 0.2 / - 0.3</b>					<b>+ 0.2 / - 0.3</b>				
<b>2.0H</b>	<b>+ 0.2 / - 0.3</b>					<b>+ 0.2 / - 0.3</b>				

CIE Pub.117, 878.4 lm Total Lamp Luminous Flux Correct (8log(F/F0) = -0.5)  
 Area: 0.033 m2

**C Range: 0 - 360DEG**  
**C Interval: 22.5DEG**  
**Test Speed: HIGH**  
**Temperature:15DEG**  
**Operators:**  
**Test Date:2020-09-15**

**γ Range: 0 - 180DEG**  
**γ Interval: 1.0DEG**  
**Test System:EVERFINE GO-2000A\_V1 SYSTEM V2.0.407.13**  
**Humidity:71%**  
**Test Distance:6.700m [K=1.0000]**  
**Remarks:**

**UTILIZATION FACTORS TABLE**

Test:U:230.24V I:0.0449A P:9.2586W PF:0.8965 Freq:49.98Hz Lamp Flux:878.42x1 lm		
NAME: LEDFLD10W4K	TYPE:LED	WEIGHT:
SPEC.:10W	DIM.:	SERIAL No.:1
MFR.: EVERFINE	SUR.:	Shielding Angle:

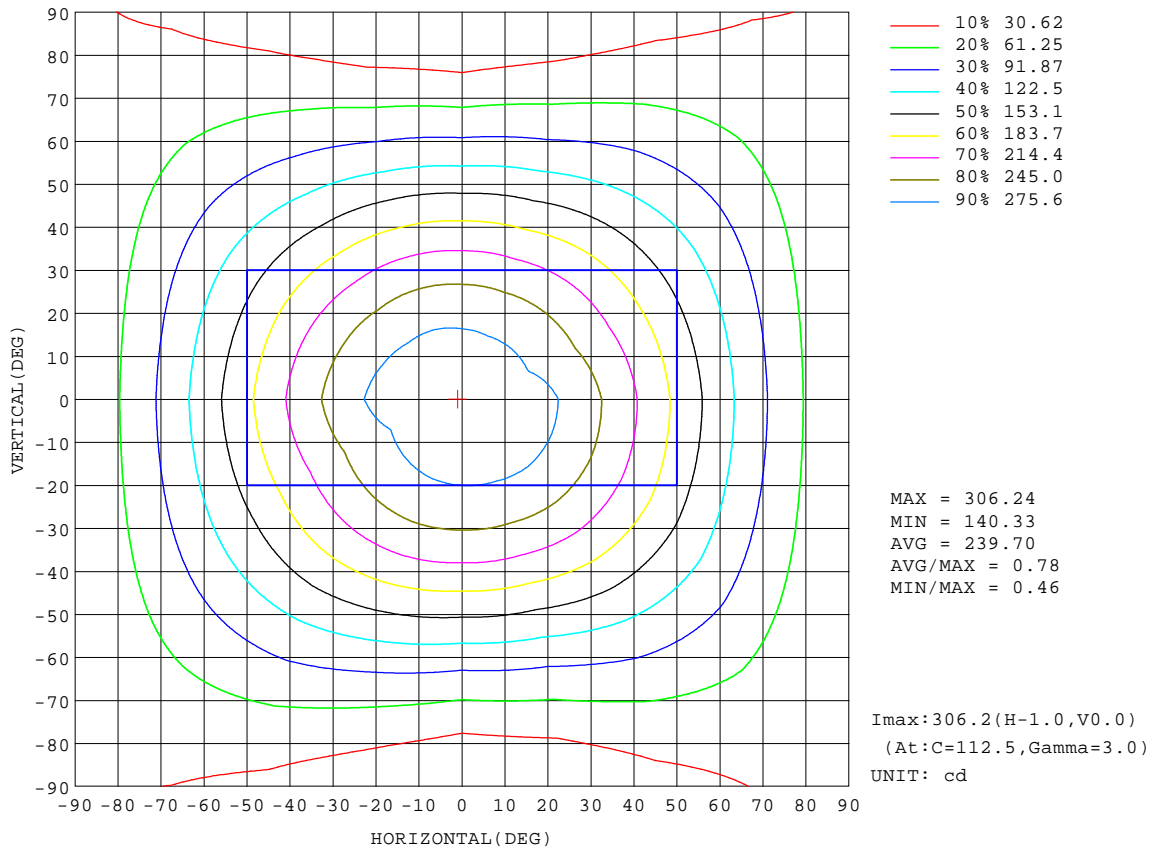
REFLECTANCE										
Ceiling	0.8	0.8	0.8	0.7	0.7	0.7	0.5	0.5	0.5	0
Walls	0.7	0.5	0.3	0.7	0.5	0.3	0.7	0.5	0.3	0
Working plane	0.2	0.2	0.2	0.2	0.2	0.2	0.2	0.2	0.2	0
<b>ROOM INDEX</b>	<b>UTILIZATION FACTORS(PERCENT) <math>k(RI) \times RCR = 5</math></b>									
<b>k = 0.60</b>	56	44	37	55	44	37	54	43	37	31
<b>0.80</b>	66	54	46	64	53	46	62	52	46	39
<b>1.00</b>	74	62	55	72	62	54	70	63	54	46
<b>1.25</b>	81	70	62	79	69	62	76	67	61	53
<b>1.50</b>	85	75	68	84	74	67	80	72	66	58
<b>2.00</b>	92	83	76	90	82	75	86	79	73	65
<b>2.50</b>	96	88	81	94	86	80	89	83	78	68
<b>3.00</b>	100	92	86	97	90	85	92	87	82	72
<b>4.00</b>	104	97	92	101	95	91	96	91	87	77
<b>5.00</b>	106	101	96	103	98	94	98	94	91	80
<b>ROOM INDEX</b>	<b>UF(total)</b>									<b>Direct</b>
<b>According to DIN EN 13032-2 2004</b>			<b>Suspended</b>				<b>SHRNOM = 1.25</b>			

**C Range: 0 - 360DEG**  
**C Interval: 22.5DEG**  
**Test Speed: HIGH**  
**Temperature:15DEG**  
**Operators:**  
**Test Date:2020-09-15**

**γ Range: 0 - 180DEG**  
**γ Interval: 1.0DEG**  
**Test System:EVERFINE GO-2000A\_V1 SYSTEM V2.0.407.13**  
**Humidity:71%**  
**Test Distance:6.700m [K=1.0000]**  
**Remarks:**

**ISOCANDELA DIAGRAM**

Test:U:230.24V I:0.0449A P:9.2586W PF:0.8965 Freq:49.98Hz Lamp Flux:878.42x1 lm		
NAME: LEDFLD10W4K	TYPE:LED	WEIGHT:
SPEC.:10W	DIM.:	SERIAL No.:1
MFR.: EVERFINE	SUR.:	Shielding Angle:



**C Range: 0 - 360DEG**  
**C Interval: 22.5DEG**  
**Test Speed: HIGH**  
**Temperature: 15DEG**  
**Operators:**  
**Test Date: 2020-09-15**

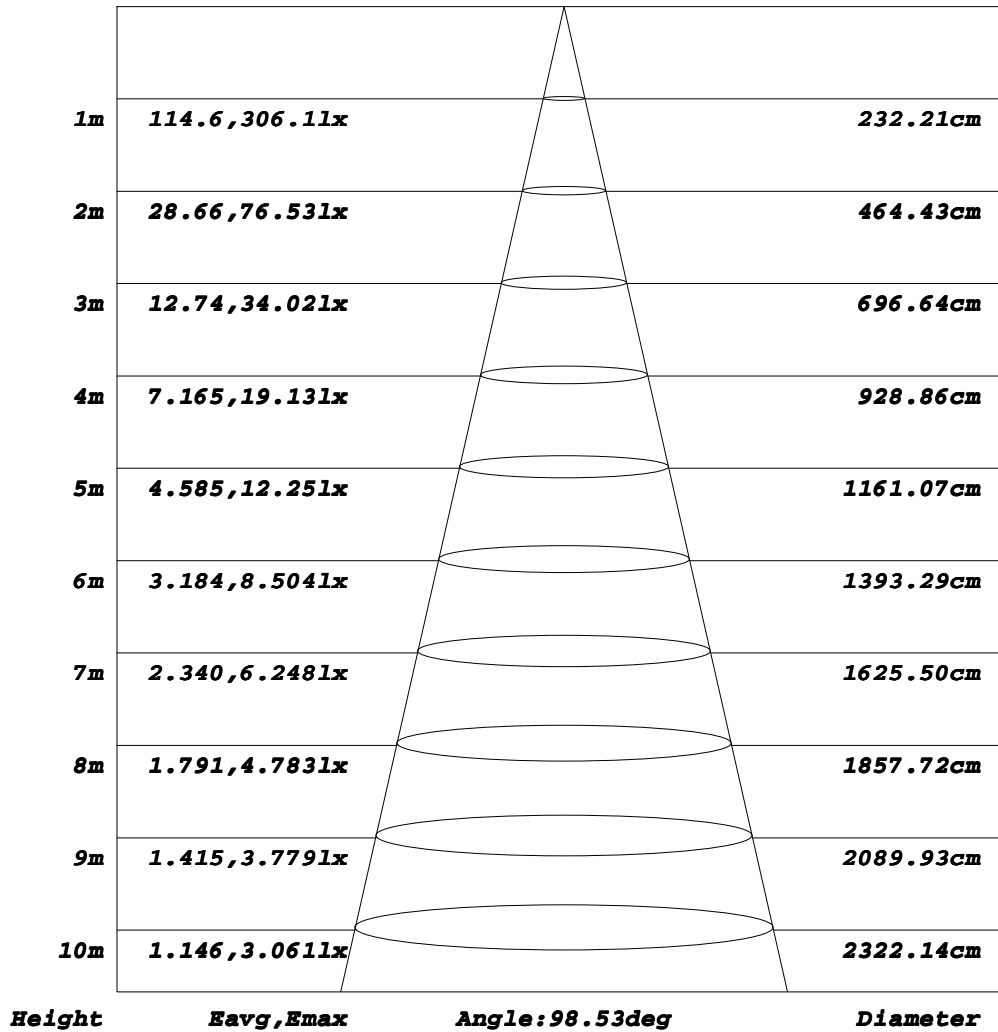
**γ Range: 0 - 180DEG**  
**γ Interval: 1.0DEG**  
**Test System: EVERFINE GO-2000A\_V1 SYSTEM V2.0.407.13**  
**Humidity: 71%**  
**Test Distance: 6.700m [K=1.0000]**  
**Remarks:**



**AAI Figure**

Test:U:230.24V I:0.0449A P:9.2586W PF:0.8965 Freq:49.98Hz Lamp Flux:878.42x1 lm		
NAME: LEDFLD10W4K	TYPE:LED	WEIGHT:
SPEC.:10W	DIM.:	SERIAL No.:1
MFR.: EVERFINE	SUR.:	Shielding Angle:

**Flux out:511.5 lm**



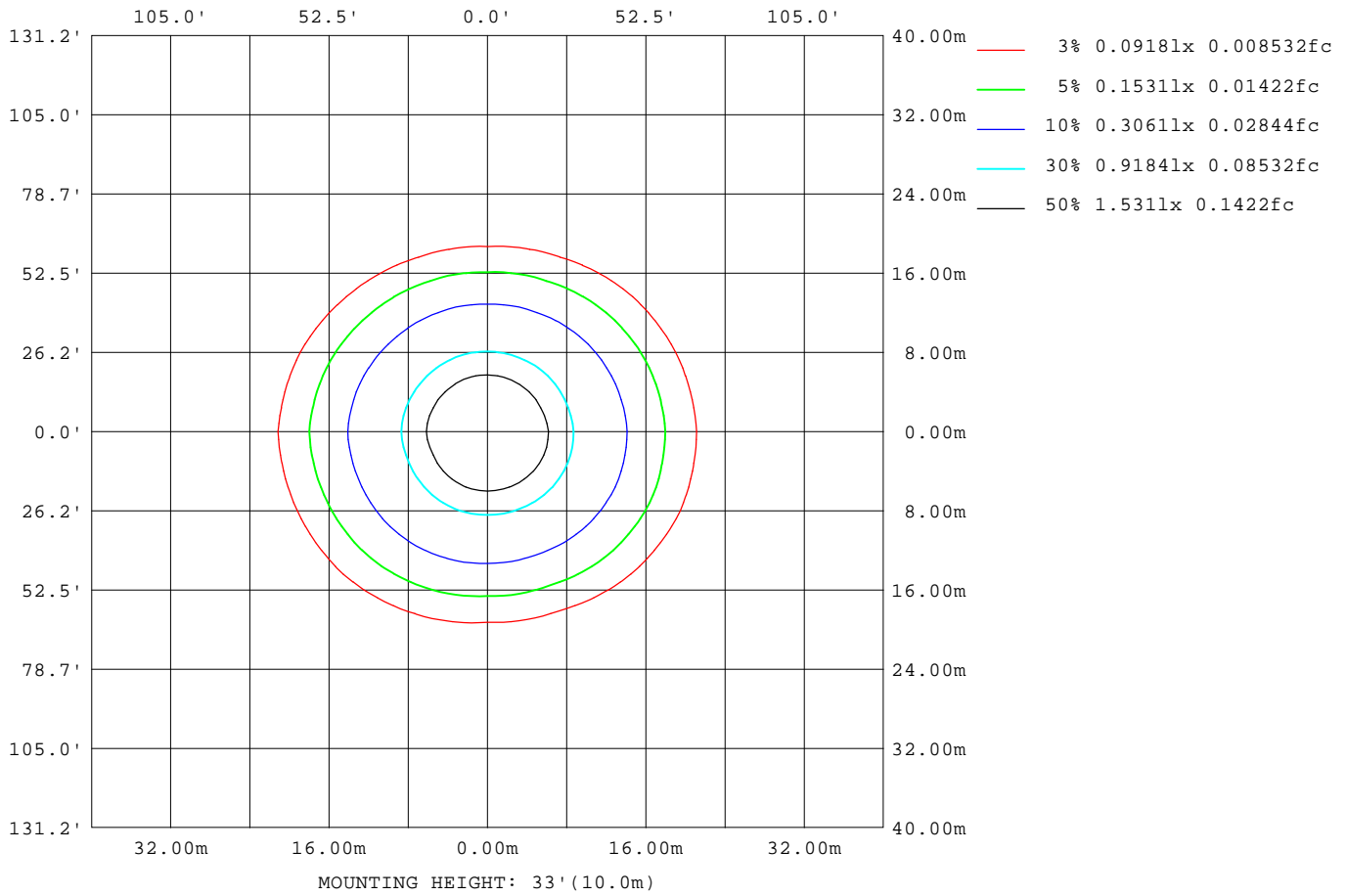
Note: The Curves indicate the illuminated area and the average illumination when the luminaire is at different distance.

**C Range: 0 - 360DEG**  
**C Interval: 22.5DEG**  
**Test Speed: HIGH**  
**Temperature: 15DEG**  
**Operators:**  
**Test Date: 2020-09-15**

**γ Range: 0 - 180DEG**  
**γ Interval: 1.0DEG**  
**Test System: EVERFINE GO-2000A\_V1 SYSTEM V2.0.407.13**  
**Humidity: 71%**  
**Test Distance: 6.700m [K=1.0000]**  
**Remarks:**

**ISOLUX DIAGRAM**

Test:U:230.24V I:0.0449A P:9.2586W PF:0.8965 Freq:49.98Hz Lamp Flux:878.42x1 lm		
NAME: LEDFLD10W4K	TYPE:LED	WEIGHT:
SPEC.:10W	DIM.:	SERIAL No.:1
MFR.: EVERFINE	SUR.:	Shielding Angle:



**C Range: 0 - 360DEG**  
**C Interval: 22.5DEG**  
**Test Speed: HIGH**  
**Temperature: 15DEG**  
**Operators:**  
**Test Date: 2020-09-15**

**γ Range: 0 - 180DEG**  
**γ Interval: 1.0DEG**  
**Test System: EVERFINE GO-2000A\_V1 SYSTEM V2.0.407.13**  
**Humidity: 71%**  
**Test Distance: 6.700m [K=1.0000]**  
**Remarks:**

**LED Avg.L Report**

Test:U:230.24V I:0.0449A P:9.2586W PF:0.8965 Freq:49.98Hz Lamp Flux:878.42x1 lm		
NAME: LEDFLD10W4K	TYPE:LED	WEIGHT:
SPEC.:10W	DIM.:	SERIAL No.:1
MFR.: EVERFINE	SUR.:	Shielding Angle:

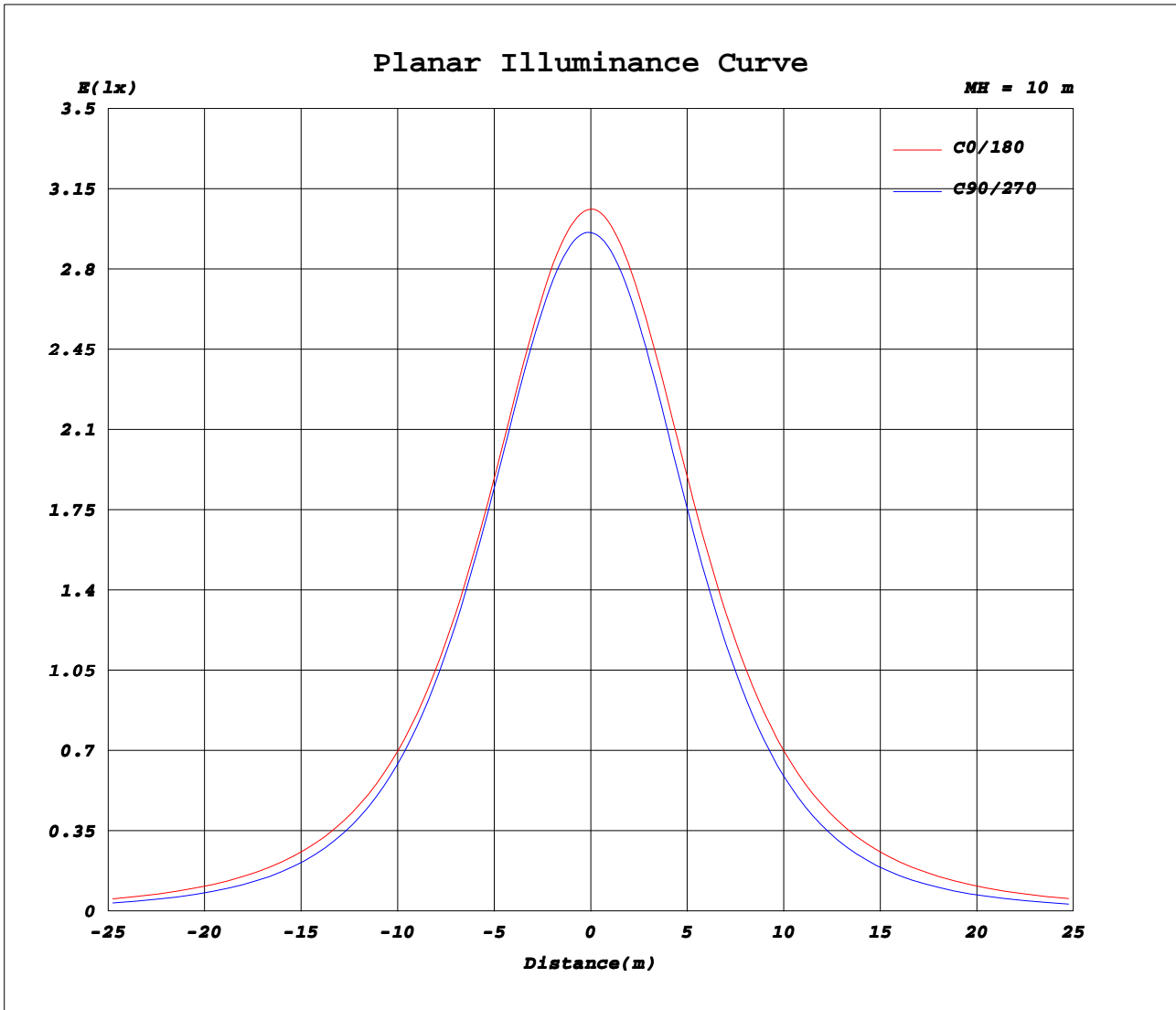
AvgL	cd/m2
L_0~180(65)av	8085
L_0~180(75)av	8808
L_0~180(85)av	14883
L_90~270(65)av	5616
L_90~270(75)av	4376
L_90~270(85)av	2587
L_45(65)av	7097
L_45(75)av	7203
L_45(85)av	11067

Standard: GB/T 29293-2012

**C Range: 0 - 360DEG**  
**C Interval: 22.5DEG**  
**Test Speed: HIGH**  
**Temperature:15DEG**  
**Operators:**  
**Test Date:2020-09-15**

**γ Range: 0 - 180DEG**  
**γ Interval: 1.0DEG**  
**Test System:EVERFINE GO-2000A\_V1 SYSTEM V2.0.407.13**  
**Humidity:71%**  
**Test Distance:6.700m [K=1.0000]**  
**Remarks:**

**Planar Illuminance Curve**



**C Range: 0 - 360DEG**  
**C Interval: 22.5DEG**  
**Test Speed: HIGH**  
**Temperature: 15DEG**  
**Operators:**  
**Test Date: 2020-09-15**

**γ Range: 0 - 180DEG**  
**γ Interval: 1.0DEG**  
**Test System: EVERFINE GO-2000A\_V1 SYSTEM V2.0.407.13**  
**Humidity: 71%**  
**Test Distance: 6.700m [K=1.0000]**  
**Remarks:**

**LUMINOUS DISTRIBUTION INTENSITY DATA**

Test:U:230.24V I:0.0449A P:9.2586W PF:0.8965 Freq:49.98Hz Lamp Flux:878.42x1 lm		
NAME: LEDFLD10W4K	TYPE:LED	WEIGHT:
SPEC.:10W	DIM.:	SERIAL No.:1
MFR.: EVERFINE	SUR.:	Shielding Angle:

Table--1

UNIT: cd

C( DEG) γ (DEG)	0	22.5	45	67.5	90	112.5	135	157.5	180	202.5	225	247.5	270	292.5	315	337.5			
0	298	298	298	298	298	298	298	298	298	298	298	298	298	298	298	298			
5	296	297	297	297	298	298	297	297	297	296	295	295	295	295	296	296			
10	292	294	294	294	294	294	293	293	292	291	289	290	290	290	291	291			
15	284	287	287	287	288	288	287	286	285	283	281	281	281	281	282	284			
20	274	277	278	277	277	278	277	276	275	272	269	269	268	268	271	273			
25	261	265	266	264	264	265	264	263	262	258	254	253	252	253	257	260			
30	246	250	250	248	248	250	249	248	247	242	237	235	234	235	240	245			
35	230	233	232	229	229	231	232	231	231	224	218	215	214	215	222	228			
40	212	215	213	208	207	210	212	213	212	205	197	193	191	193	201	209			
45	192	195	191	184	183	188	192	193	193	185	175	170	168	170	180	189			
50	172	175	169	159	158	163	170	173	173	164	153	146	144	147	158	169			
55	152	154	147	134	132	139	148	152	153	143	131	123	119	125	137	149			
60	133	134	124	110	107	116	127	133	133	123	110	99.8	95.9	102	116	129			
65	113	113	103	87.3	83.1	94.0	106	112	113	104	90.0	78.2	73.5	81.5	97.0	109			
70	93.4	93.3	82.8	66.1	61.0	73.2	86.1	93.1	94.2	85.4	71.9	58.6	52.8	62.1	77.7	90.1			
75	74.9	74.6	63.6	46.5	40.7	54.3	67.6	74.3	75.5	67.5	54.7	40.7	34.1	44.9	60.2	71.9			
80	57.4	57.0	46.6	29.5	22.8	37.4	51.1	57.0	58.2	51.4	39.6	25.3	17.9	29.5	44.6	55.1			
85	42.4	41.7	32.2	15.9	9.01	23.4	36.4	42.2	43.2	37.6	27.2	13.2	5.87	17.9	31.6	40.4			
90	31.4	30.5	22.2	8.17	2.03	14.1	25.7	30.9	31.8	27.5	18.7	6.48	0.92	11.1	22.6	29.9			
95	24.7	23.7	16.7	5.32	0.99	9.72	19.3	23.8	24.4	21.2	14.1	4.13	0.66	8.04	17.5	23.4			
100	20.5	19.5	13.4	4.03	0.92	7.48	15.6	19.5	20.0	17.4	11.4	3.15	0.64	6.32	14.3	19.3			
105	17.6	16.6	11.1	3.32	0.94	6.09	13.1	16.6	17.1	14.8	9.58	2.64	0.67	5.24	12.1	16.5			
110	15.4	14.4	9.45	2.92	1.01	5.18	11.2	14.5	15.0	12.9	8.25	2.40	0.74	4.54	10.5	14.4			
115	13.6	12.6	8.17	2.72	1.11	4.57	9.71	12.7	13.2	11.4	7.24	2.30	0.94	3.69	8.77	12.7			
120	12.0	11.0	7.14	2.57	1.23	4.13	8.48	11.2	11.8	10.1	6.43	2.28	1.07	2.99	7.74	11.2			
125	10.6	9.64	6.31	2.49	1.34	3.80	7.44	9.86	10.4	8.91	5.76	2.29	1.21	2.98	5.51	9.60			
130	9.32	8.45	5.59	2.44	1.45	3.54	6.58	8.66	9.17	7.88	5.22	2.31	1.33	2.97	5.40	7.34			
135	8.18	7.41	4.97	2.40	1.55	3.34	5.82	7.59	8.04	6.96	4.74	2.18	1.47	2.97	4.48	6.14			
140	7.10	6.43	4.43	2.37	1.65	3.16	5.17	6.63	7.03	6.13	4.32	2.16	1.62	2.92	4.48	5.16			
145	6.09	5.53	3.96	2.32	1.74	3.01	4.59	5.76	6.11	5.39	3.96	2.04	1.74	2.85	4.46	5.14			
150	5.19	4.76	3.57	2.26	1.83	2.87	4.08	5.00	5.28	4.72	3.63	2.05	1.87	2.65	3.98	3.84			
155	4.40	4.09	3.21	2.19	1.93	2.71	3.64	4.31	4.54	4.14	3.24	2.09	1.97	2.31	3.33	4.24			
160	3.74	3.52	2.88	2.14	2.01	2.55	3.23	3.70	3.90	3.62	2.99	2.15	2.04	2.26	3.01	3.65			
165	3.10	3.02	2.55	2.10	2.06	2.38	2.83	3.16	3.34	3.14	2.56	2.12	2.12	2.16	2.55	2.88			
170	2.53	2.49	2.27	2.16	2.14	2.24	2.46	2.61	2.74	2.57	2.39	2.18	2.20	2.17	2.19	2.49			
175	2.23	2.24	2.21	2.21	2.20	2.21	2.24	2.27	2.34	2.28	2.25	2.23	2.24	2.23	2.22	2.21			
180	2.24	2.27	2.25	2.26	2.25	2.26	2.25	2.25	2.27	2.25	2.27	2.25	2.26	2.25	2.25	2.24			

**C Range: 0 - 360DEG**  
**C Interval: 22.5DEG**  
**Test Speed: HIGH**  
**Temperature:15DEG**  
**Operators:**  
**Test Date:2020-09-15**

**γ Range: 0 - 180DEG**  
**γ Interval: 1.0DEG**  
**Test System:EVERFINE GO-2000A\_V1 SYSTEM V2.0.407.13**  
**Humidity:71%**  
**Test Distance:6.700m [K=1.0000]**  
**Remarks:**