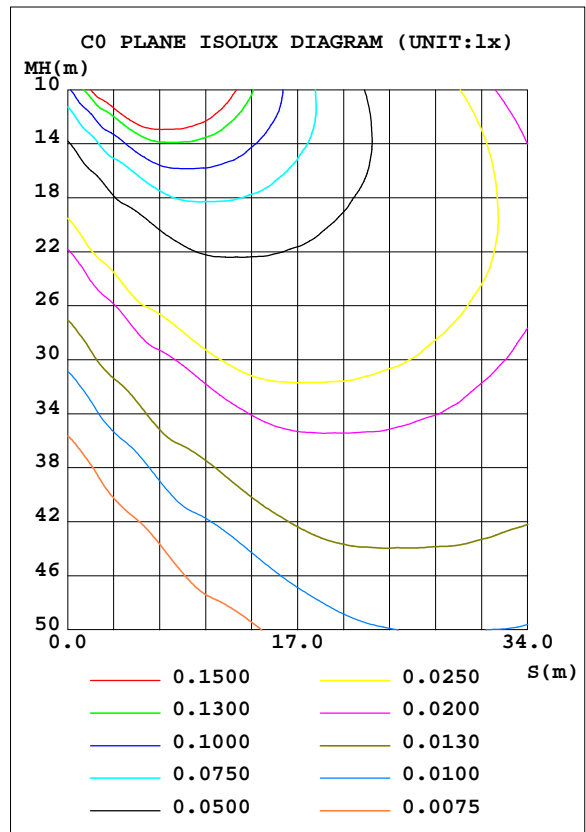
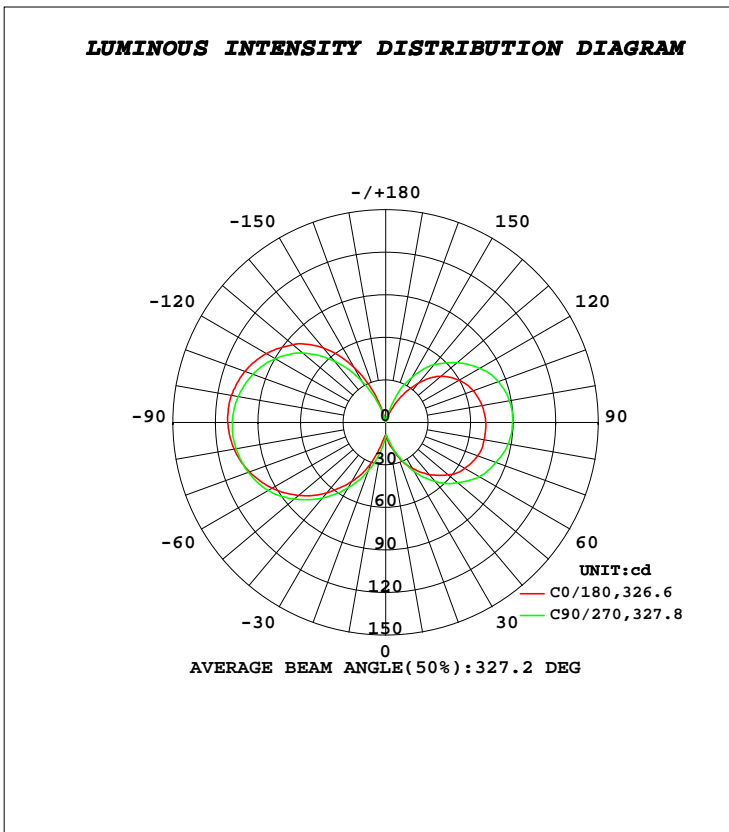


LUMINAIRE PHOTOMETRIC TEST REPORT

Test:U:230.28V I:0.0371A P:7.6521W PF:0.8959 Freq:49.97Hz Lamp Flux:818.716x1 lm		
NAME: LEDA60E278W	TYPE:LED	WEIGHT:
SPEC.:8W	DIM.:	SERIAL No.:1
MFR.: EVERFINE	SUR.:	Shielding Angle:

DATA OF LAMP		PHOTOMETRIC DATA Eff: 106.99 lm/W			
MODEL	A60GLS	I _{max} (cd)	112.6	S/MH(C0/180)	4.87
NOMINAL POWER(W)	8	LOR(%)	100.0	S/MH(C90/270)	4.87
RATED VOLTAGE(V)	230	TOTAL FLUX(lm)	818.72	η UP, DN(C0-180)	22.0,23.3
NOMINAL FLUX(lm)	818.716	CIE CLASS	DIFFUSE	η UP, DN(C180-360)	26.3,28.3
LAMPS INSIDE	1	η up(%)	48.3	CIBSE SHR NOM	1.75
TEST VOLTAGE(V)	230	η down(%)	51.7	CIBSE SHR MAX	1.75



C Range: 0 - 360DEG
C Interval: 22.5DEG
Test Speed: HIGH
Temperature:15DEG
Operators:
Test Date:2020-09-15

γ Range: 0 - 180DEG
γ Interval: 1.0DEG
Test System:EVERFINE GO-2000A_V1 SYSTEM V2.0.407.13
Humidity:71%
Test Distance:6.700m [K=1.0000]
Remarks:

ZONAL FLUX DIAGRAM

ZONAL FLUX DIAGRAM:

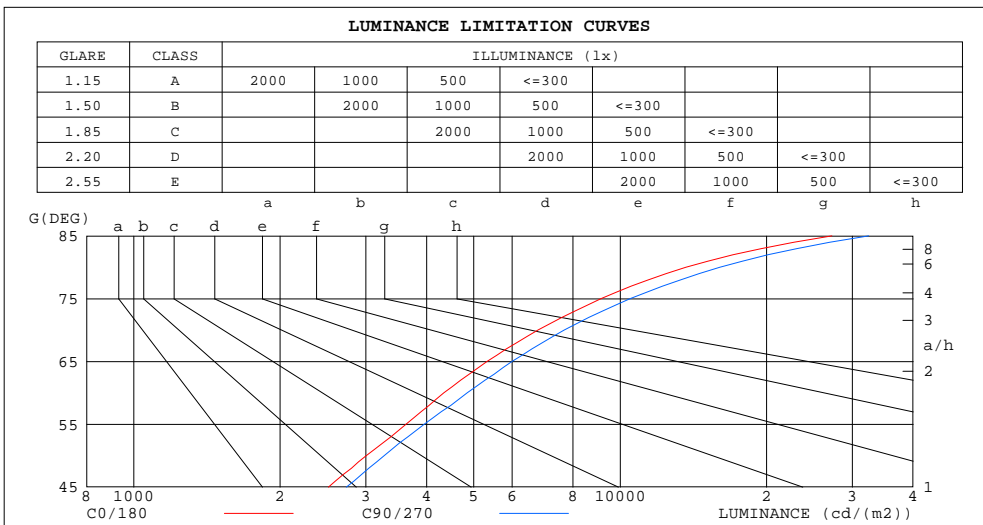
γ	C0	C45	C90	C135	C180	C225	C270	C315	γ	Φ zone	Φ total	%lum,lamp
10	15.36	13.10	12.74	12.85	14.40	20.28	20.39	17.01	0- 10	1.227	1.227	0.15,0.15
20	25.47	21.84	24.42	26.74	30.29	36.98	36.34	31.51	10- 20	6.405	7.633	0.93,0.93
30	37.10	35.70	39.80	43.71	48.10	56.54	53.24	48.38	20- 30	17.17	24.80	3.03,3.03
40	48.13	48.11	54.39	59.77	64.85	75.22	69.65	61.60	30- 40	31.85	56.64	6.92,6.92
50	57.51	58.45	66.30	74.53	80.12	89.49	84.09	72.57	40- 50	48.14	104.8	12.8,12.8
60	64.59	66.31	76.38	86.20	92.72	101.1	95.87	81.51	50- 60	63.93	168.7	20.6,20.6
70	69.02	71.75	82.74	95.13	102.3	107.9	103.1	87.83	60- 70	77.09	245.8	30,30
80	70.58	74.63	87.67	100.7	108.5	112.0	107.1	91.33	70- 80	86.34	332.1	40.6,40.6
90	70.70	75.88	89.53	103.0	111.4	112.2	108.2	91.88	80- 90	90.85	423.0	51.7,51.7
100	69.04	74.89	88.63	102.2	110.4	108.7	105.8	89.20	90-100	90.44	513.4	62.7,62.7
110	65.76	71.69	84.61	98.51	105.7	101.1	99.72	83.40	100-110	85.15	598.6	73.1,73.1
120	59.69	65.00	76.43	90.79	97.34	89.46	90.09	74.30	110-120	75.26	673.9	82.3,82.3
130	50.78	56.75	65.67	79.84	85.47	75.22	76.35	62.61	120-130	61.36	735.2	89.8,89.8
140	36.54	44.45	53.29	63.01	68.64	60.48	56.38	46.64	130-140	44.86	780.1	95.3,95.3
150	19.68	28.06	36.44	41.59	44.99	43.47	33.45	26.77	140-150	26.66	806.7	98.5,98.5
160	5.654	10.69	15.39	13.72	17.93	16.60	10.97	5.170	150-160	10.53	817.3	99.8,99.8
170	0.3788	0.4552	0.5222	0.4667	0.5073	0.4600	0.3974	0.3794	160-170	1.416	818.7	100,100
180	0.2612	0.2675	0.2798	0.2841	0.2642	0.2644	0.2798	0.2841	170-180	0.0323	818.7	100,100
DEG	LUMINOUS INTENSITY:cd									UNIT:lm		

C Range: 0 - 360DEG
C Interval: 22.5DEG
Test Speed: HIGH
Temperature:15DEG
Operators:
Test Date:2020-09-15

γ Range: 0 - 180DEG
 γ Interval: 1.0DEG
Test System:EVERFINE GO-2000A_V1 SYSTEM V2.0.407.13
Humidity:71%
Test Distance:6.700m [K=1.0000]
Remarks:

LUMINANCE LIMITATION CURVES

Test:U:230.28V I:0.0371A P:7.6521W PF:0.8959 Freq:49.97Hz Lamp Flux:818.716x1 lm		
NAME: LEDA60E278W	TYPE:LED	WEIGHT:
SPEC.:8W	DIM.:	SERIAL No.:1
MFR.: EVERFINE	SUR.:	Shielding Angle:



LUMINANCE cd/(m2)		
G(DEG)	C0/180	C90/270
85	27262	32421
80	13662	16028
75	9143	10495
70	6784	7680
65	5331	5997
60	4343	4850
55	3630	3962
50	3008	3274
45	2514	2736

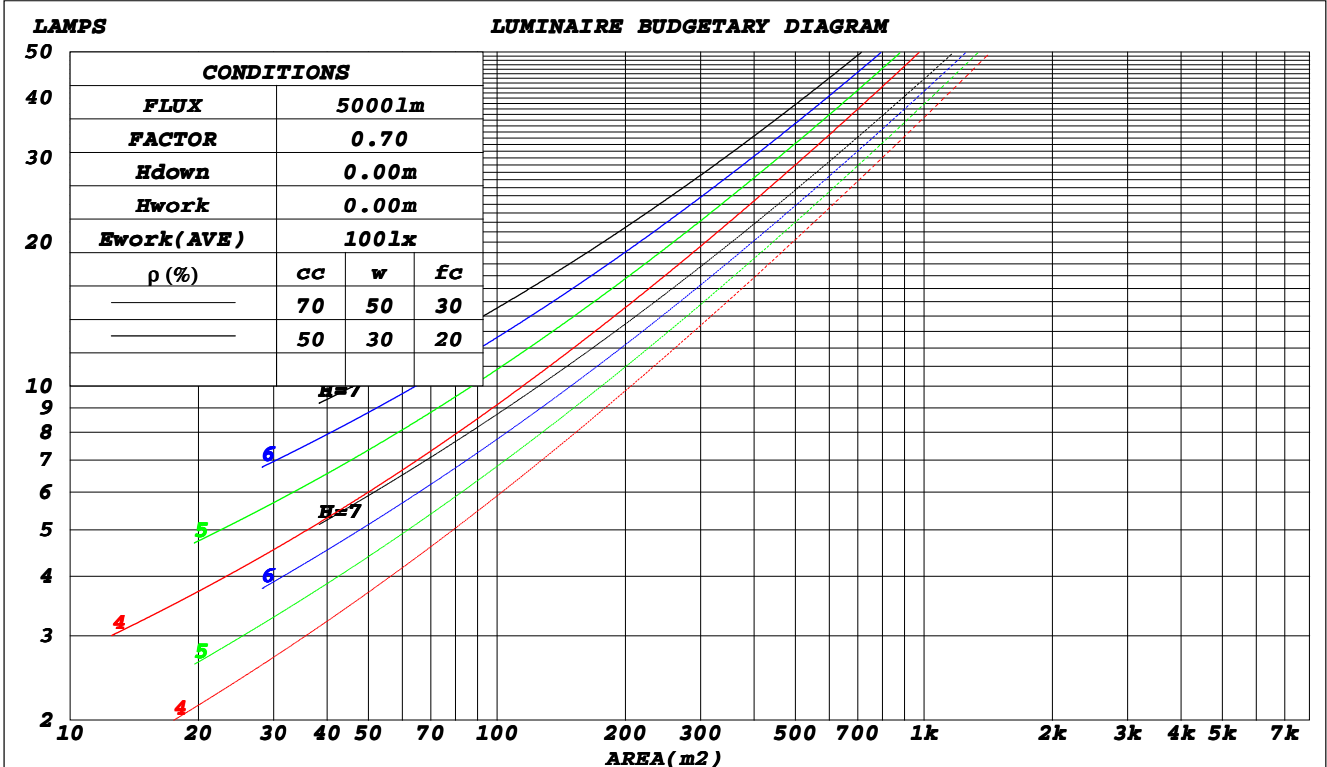
C Range: 0 - 360DEG
C Interval: 22.5DEG
Test Speed: HIGH
Temperature: 15DEG
Operators:
Test Date: 2020-09-15

γ Range: 0 - 180DEG
γ Interval: 1.0DEG
Test System: EVERFINE GO-2000A_V1 SYSTEM V2.0.407.13
Humidity: 71%
Test Distance: 6.700m [K=1.0000]
Remarks:

CU AND LUMINAIRE BUDGETARY ESTIMATE DIAGRAM

Test:U:230.28V I:0.0371A P:7.6521W PF:0.8959 Freq:49.97Hz Lamp Flux:818.716x1 Lm		
NAME: LEDA60E278W	TYPE:LED	WEIGHT:
SPEC.:8W	DIM.:	SERIAL No.:1
MFR.: EVERFINE	SUR.:	Shielding Angle:

ρ_{cc}	80%			70%			50%			30%			10%			0
ρ_w	50%	30%	10%	50%	30%	10%	50%	30%	10%	50%	30%	10%	50%	30%	10%	0
ρ_{fc}	20%			20%			20%			20%			20%			0
RCR	RCR:Room Cavity Ratio						Coefficients of Utilization(CU)									
0.0	1.08	1.08	1.08	.99	.99	.99	.84	.84	.84	.70	.70	.70	.58	.58	.58	.52
1.0	.86	.80	.74	.79	.73	.68	.65	.61	.57	.53	.50	.47	.42	.40	.37	.32
2.0	.72	.63	.56	.66	.58	.52	.54	.48	.43	.43	.39	.35	.34	.30	.27	.22
3.0	.61	.52	.44	.56	.47	.40	.46	.39	.34	.37	.31	.27	.28	.24	.21	.16
4.0	.53	.43	.36	.48	.39	.33	.40	.33	.27	.31	.26	.22	.24	.20	.16	.12
5.0	.46	.37	.29	.42	.34	.27	.35	.28	.22	.28	.22	.18	.21	.17	.13	.10
6.0	.41	.31	.25	.37	.29	.23	.31	.24	.19	.24	.19	.15	.19	.14	.11	.08
7.0	.37	.27	.21	.33	.25	.19	.27	.21	.16	.22	.17	.12	.17	.12	.09	.06
8.0	.33	.24	.18	.30	.22	.17	.25	.18	.14	.20	.15	.11	.15	.11	.08	.05
9.0	.30	.21	.16	.27	.20	.14	.22	.16	.12	.18	.13	.09	.14	.10	.07	.04
10.0	.27	.19	.14	.25	.18	.13	.21	.15	.10	.17	.12	.08	.13	.09	.06	.04



C Range: 0 - 360DEG
 C Interval: 22.5DEG
 Test Speed: HIGH
 Temperature: 15DEG
 Operators:
 Test Date: 2020-09-15

γ Range: 0 - 180DEG
 γ Interval: 1.0DEG
 Test System: EVERFINE GO-2000A_V1 SYSTEM V2.0.407.13
 Humidity: 71%
 Test Distance: 6.700m [K=1.0000]
 Remarks:

WEC AND CCEC

Test:U:230.28V I:0.0371A P:7.6521W PF:0.8959 Freq:49.97Hz Lamp Flux:818.716x1 lm		
NAME: LEDA60E278W	TYPE:LED	WEIGHT:
SPEC.:8W	DIM.:	SERIAL No.:1
MFR.: EVERFINE	SUR.:	Shielding Angle:

ρ_{cc}	80%			70%			50%			30%			10%			0
ρ_w	50%	30%	10%	50%	30%	10%	50%	30%	10%	50%	30%	10%	50%	30%	10%	0
ρ_{fc}	20%			20%			20%			20%			20%			0
RCR	RCR:Room Cavity Ratio						Wall Exitance Coefficients(WEC)									
0.0																
1.0	.437	.248	.079	.415	.236	.075	.373	.214	.068	.335	.193	.062	.301	.174	.056	
2.0	.360	.197	.061	.340	.187	.058	.302	.168	.052	.268	.150	.047	.236	.133	.042	
3.0	.312	.166	.050	.294	.157	.047	.259	.140	.043	.227	.124	.038	.197	.109	.034	
4.0	.276	.143	.042	.259	.136	.040	.228	.121	.036	.198	.106	.032	.171	.093	.028	
5.0	.248	.126	.037	.233	.119	.035	.204	.106	.031	.176	.093	.028	.151	.081	.024	
6.0	.225	.113	.032	.211	.107	.031	.184	.094	.027	.159	.083	.024	.136	.071	.021	
7.0	.206	.102	.029	.193	.096	.027	.168	.085	.025	.145	.074	.022	.123	.064	.019	
8.0	.190	.093	.026	.178	.088	.025	.155	.078	.022	.134	.068	.020	.113	.058	.017	
9.0	.177	.085	.024	.165	.081	.023	.144	.071	.020	.124	.062	.018	.105	.053	.015	
10.0	.165	.079	.022	.154	.074	.021	.134	.066	.018	.115	.057	.016	.097	.049	.014	

ρ_{cc}	80%			70%			50%			30%			10%			0
ρ_w	50%	30%	10%	50%	30%	10%	50%	30%	10%	50%	30%	10%	50%	30%	10%	0
ρ_{fc}	20%			20%			20%			20%			20%			0
RCR	RCR:Room Cavity Ratio						Ceiling Cavity Exitance Coefficients(CCEC)									
0.0	.559	.559	.559	.478	.478	.478	.326	.326	.326	.187	.187	.187	.060	.060	.060	
1.0	.560	.526	.496	.479	.452	.427	.328	.311	.295	.189	.180	.172	.060	.058	.055	
2.0	.555	.505	.464	.475	.435	.401	.326	.301	.279	.188	.175	.164	.060	.057	.053	
3.0	.548	.490	.444	.470	.423	.385	.323	.294	.270	.186	.172	.159	.060	.056	.052	
4.0	.541	.479	.432	.464	.414	.375	.319	.288	.264	.185	.169	.156	.059	.055	.051	
5.0	.533	.470	.423	.458	.407	.368	.316	.284	.260	.183	.167	.154	.059	.054	.051	
6.0	.526	.463	.417	.452	.401	.363	.312	.281	.257	.181	.165	.153	.058	.054	.050	
7.0	.519	.457	.413	.447	.396	.360	.309	.278	.255	.179	.164	.152	.058	.054	.050	
8.0	.512	.452	.410	.441	.392	.357	.305	.275	.253	.178	.162	.151	.057	.053	.050	
9.0	.506	.447	.407	.436	.388	.355	.302	.273	.252	.176	.161	.150	.057	.053	.050	
10.0	.500	.443	.405	.431	.385	.354	.299	.271	.251	.175	.160	.150	.057	.053	.050	

C Range: 0 - 360DEG
 C Interval: 22.5DEG
 Test Speed: HIGH
 Temperature:15DEG
 Operators:
 Test Date:2020-09-15

γ Range: 0 - 180DEG
 γ Interval: 1.0DEG
 Test System:EVERFINE GO-2000A_V1 SYSTEM V2.0.407.13
 Humidity:71%
 Test Distance:6.700m [K=1.0000]
 Remarks:

UGR(Unified Glare Rating) Table

Test:U:230.28V I:0.0371A P:7.6521W PF:0.8959 Freq:49.97Hz Lamp Flux:818.716x1 lm										
NAME: LEDA60E278W					TYPE:LED			WEIGHT:		
SPEC.:8W					DIM.:			SERIAL No.:1		
MFR.: EVERFINE					SUR.:			Shielding Angle:		
ceiling/cavity	0.7	0.7	0.5	0.5	0.3	0.7	0.7	0.5	0.5	0.3
walls	0.5	0.3	0.5	0.3	0.3	0.5	0.3	0.5	0.3	0.3
working plane	0.2	0.2	0.2	0.2	0.2	0.2	0.2	0.2	0.2	0.2
Room dimensions	Viewed crosswise					Viewed endwise				
x = 2H y = 2H	13.9	15.0	14.7	15.9	17.1	14.5	15.6	15.4	16.5	17.7
3H	17.5	18.5	18.4	19.4	20.6	18.2	19.3	19.1	20.2	21.3
4H	19.6	20.5	20.5	21.5	22.7	20.4	21.4	21.3	22.3	23.5
6H	21.9	22.8	22.8	23.7	24.9	22.8	23.7	23.7	24.6	25.8
8H	23.1	24.0	24.0	25.0	26.2	24.1	25.0	25.0	25.9	27.1
12H	24.6	25.4	25.5	26.4	27.6	25.6	26.4	26.5	27.4	28.6
4H 2H	15.2	16.2	16.1	17.1	18.3	15.6	16.6	16.5	17.5	18.7
3H	18.6	19.5	19.5	20.4	21.7	19.2	20.1	20.1	21.0	22.2
4H	20.6	21.4	21.6	22.4	23.6	21.3	22.1	22.3	23.1	24.3
6H	23.0	23.7	23.9	24.6	25.9	23.8	24.5	24.7	25.5	26.7
8H	24.3	25.0	25.3	26.0	27.2	25.2	25.8	26.1	26.8	28.1
12H	25.9	26.5	26.8	27.5	28.8	26.8	27.4	27.8	28.4	29.7
8H 4H	21.5	22.2	22.5	23.2	24.5	22.0	22.7	23.0	23.7	25.0
6H	24.0	24.5	25.0	25.5	26.8	24.6	25.2	25.6	26.2	27.5
8H	25.4	25.9	26.4	26.9	28.2	26.1	26.6	27.1	27.6	28.9
12H	27.0	27.5	28.1	28.5	29.9	27.9	28.3	28.9	29.3	30.7
12H 4H	21.8	22.4	22.7	23.4	24.7	22.2	22.8	23.2	23.8	25.1
6H	24.4	24.9	25.4	25.9	27.2	24.9	25.4	25.9	26.4	27.8
8H	25.9	26.3	26.9	27.3	28.7	26.5	26.9	27.5	28.0	29.3
Variations with the observer position at spacings:										
S = 1.0H	+ 0.1 / - 0.1					+ 0.1 / - 0.1				
1.5H	+ 0.2 / - 0.2					+ 0.2 / - 0.2				
2.0H	+ 0.3 / - 0.3					+ 0.3 / - 0.3				

CIE Pub.117, 818.7 lm Total Lamp Luminous Flux Correct (8log(F/F0) = -0.7)
 Area: 0.031 m2

C Range: 0 - 360DEG
C Interval: 22.5DEG
Test Speed: HIGH
Temperature:15DEG
Operators:
Test Date:2020-09-15

γ Range: 0 - 180DEG
γ Interval: 1.0DEG
Test System:EVERFINE GO-2000A_V1 SYSTEM V2.0.407.13
Humidity:71%
Test Distance:6.700m [K=1.0000]
Remarks:

UTILIZATION FACTORS TABLE

Test:U:230.28V I:0.0371A P:7.6521W PF:0.8959 Freq:49.97Hz Lamp Flux:818.716x1 Lm		
NAME: LEDA60E278W	TYPE:LED	WEIGHT:
SPEC.:8W	DIM.:	SERIAL No.:1
MFR.: EVERFINE	SUR.:	Shielding Angle:

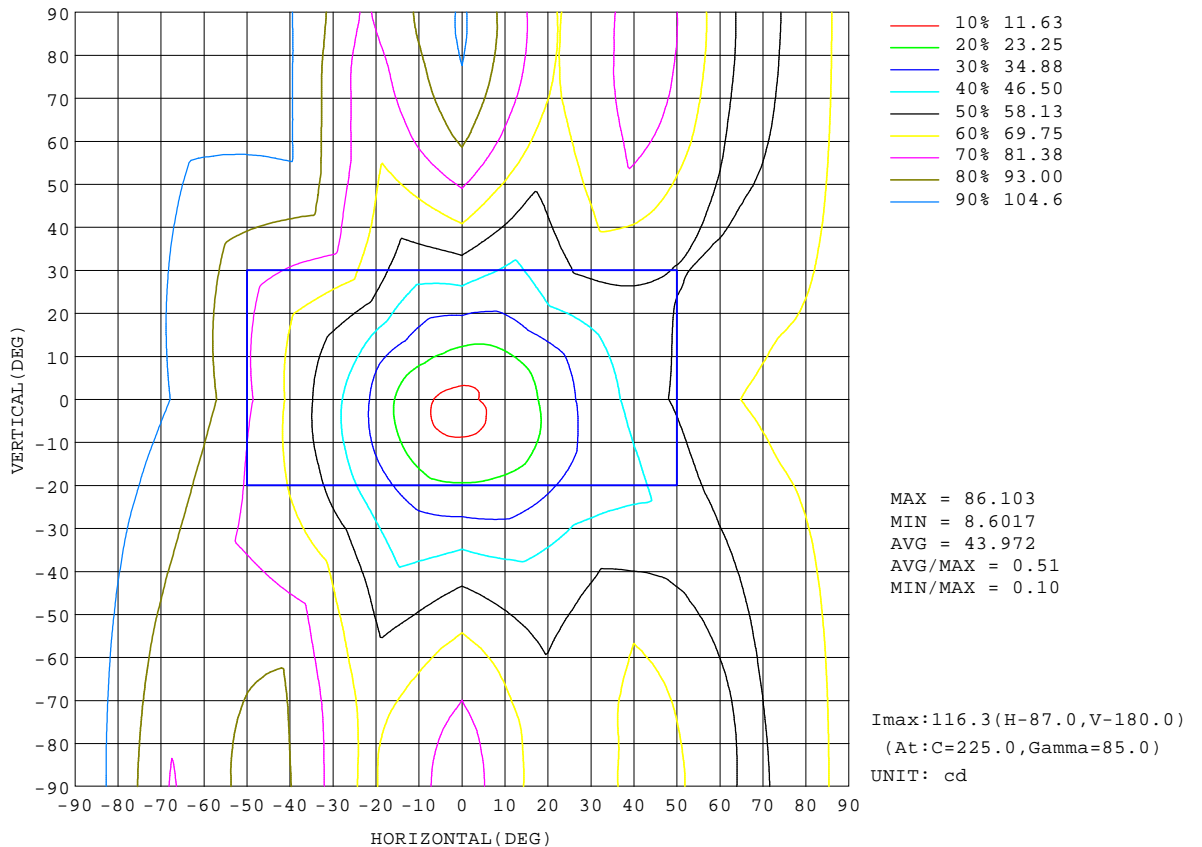
REFLECTANCE										
Ceiling	0.8	0.8	0.8	0.7	0.7	0.7	0.5	0.5	0.5	0
Walls	0.7	0.5	0.3	0.7	0.5	0.3	0.7	0.5	0.3	0
Working plane	0.2	0.2	0.2	0.2	0.2	0.2	0.2	0.2	0.2	0
ROOM INDEX	UTILIZATION FACTORS(PERCENT) $k(RI) \times RCR = 5$									
k = 0.60	34	21	14	32	20	13	29	18	12	5
0.80	43	28	19	40	27	19	35	24	17	7
1.00	50	35	25	46	33	24	40	31	22	10
1.25	57	42	32	53	39	30	45	34	27	13
1.50	62	47	37	58	44	35	49	39	31	16
2.00	70	56	46	65	53	43	55	45	38	20
2.50	75	63	53	69	58	49	59	50	43	23
3.00	79	68	58	73	63	55	62	54	47	26
4.00	85	75	66	78	69	62	66	59	53	30
5.00	89	80	72	82	74	67	69	63	57	32
ROOM INDEX	UF(total)									Direct
According to DIN EN 13032-2 2004			Suspended					SHRNOM = 1.25		

C Range: 0 - 360DEG
C Interval: 22.5DEG
Test Speed: HIGH
Temperature:15DEG
Operators:
Test Date:2020-09-15

γ Range: 0 - 180DEG
 γ Interval: 1.0DEG
Test System:EVERFINE GO-2000A_V1 SYSTEM V2.0.407.13
Humidity:71%
Test Distance:6.700m [K=1.0000]
Remarks:

ISOCANDELA DIAGRAM

Test:U:230.28V I:0.0371A P:7.6521W PF:0.8959 Freq:49.97Hz Lamp Flux:818.716x1 lm		
NAME: LEDA60E278W	TYPE:LED	WEIGHT:
SPEC.:8W	DIM.:	SERIAL No.:1
MFR.: EVERFINE	SUR.:	Shielding Angle:



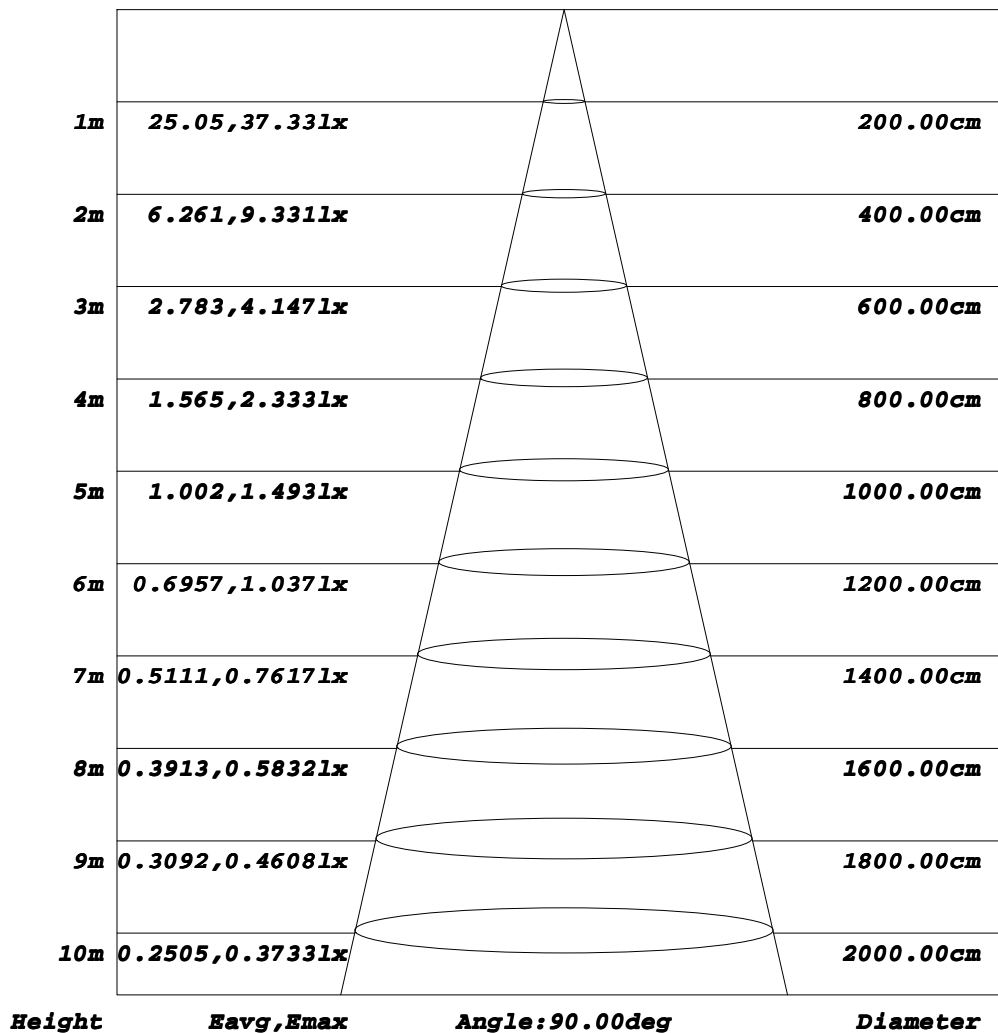
C Range: 0 - 360DEG
C Interval: 22.5DEG
Test Speed: HIGH
Temperature:15DEG
Operators:
Test Date:2020-09-15

γ Range: 0 - 180DEG
γ Interval: 1.0DEG
Test System:EVERFINE GO-2000A_V1 SYSTEM V2.0.407.13
Humidity:71%
Test Distance:6.700m [K=1.0000]
Remarks:

AAI Figure

Test:U:230.28V I:0.0371A P:7.6521W PF:0.8959 Freq:49.97Hz Lamp Flux:818.716x1 lm		
NAME: LEDA60E278W	TYPE:LED	WEIGHT:
SPEC.:8W	DIM.:	SERIAL No.:1
MFR.: EVERFINE	SUR.:	Shielding Angle:

Flux out:78.68 lm



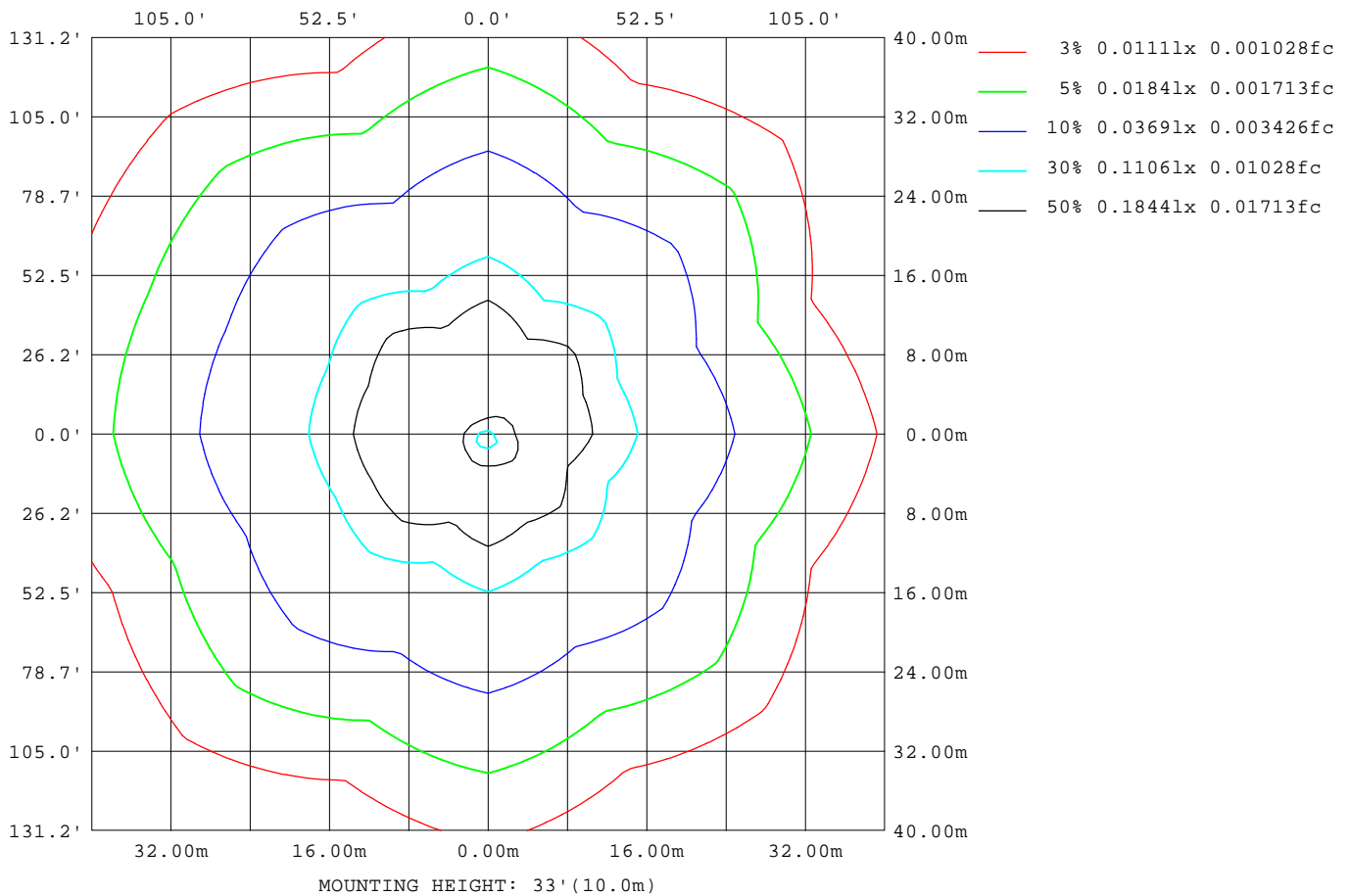
Note: The Curves indicate the illuminated area and the average illumination when the luminaire is at different distance.

C Range: 0 - 360DEG
C Interval: 22.5DEG
Test Speed: HIGH
Temperature: 15DEG
Operators:
Test Date: 2020-09-15

γ Range: 0 - 180DEG
γ Interval: 1.0DEG
Test System: EVERFINE GO-2000A_V1 SYSTEM V2.0.407.13
Humidity: 71%
Test Distance: 6.700m [K=1.0000]
Remarks:

ISOLUX DIAGRAM

Test:U:230.28V I:0.0371A P:7.6521W PF:0.8959 Freq:49.97Hz Lamp Flux:818.716x1 lm		
NAME: LEDA60E278W	TYPE:LED	WEIGHT:
SPEC.:8W	DIM.:	SERIAL No.:1
MFR.: EVERFINE	SUR.:	Shielding Angle:



C Range: 0 - 360DEG
C Interval: 22.5DEG
Test Speed: HIGH
Temperature: 15DEG
Operators:
Test Date: 2020-09-15

γ Range: 0 - 180DEG
γ Interval: 1.0DEG
Test System: EVERFINE GO-2000A_V1 SYSTEM V2.0.407.13
Humidity: 71%
Test Distance: 6.700m [K=1.0000]
Remarks:

LED Avg.L Report

Test:U:230.28V I:0.0371A P:7.6521W PF:0.8959 Freq:49.97Hz Lamp Flux:818.716x1 lm		
NAME: LEDA60E278W	TYPE:LED	WEIGHT:
SPEC.:8W	DIM.:	SERIAL No.:1
MFR.: EVERFINE	SUR.:	Shielding Angle:

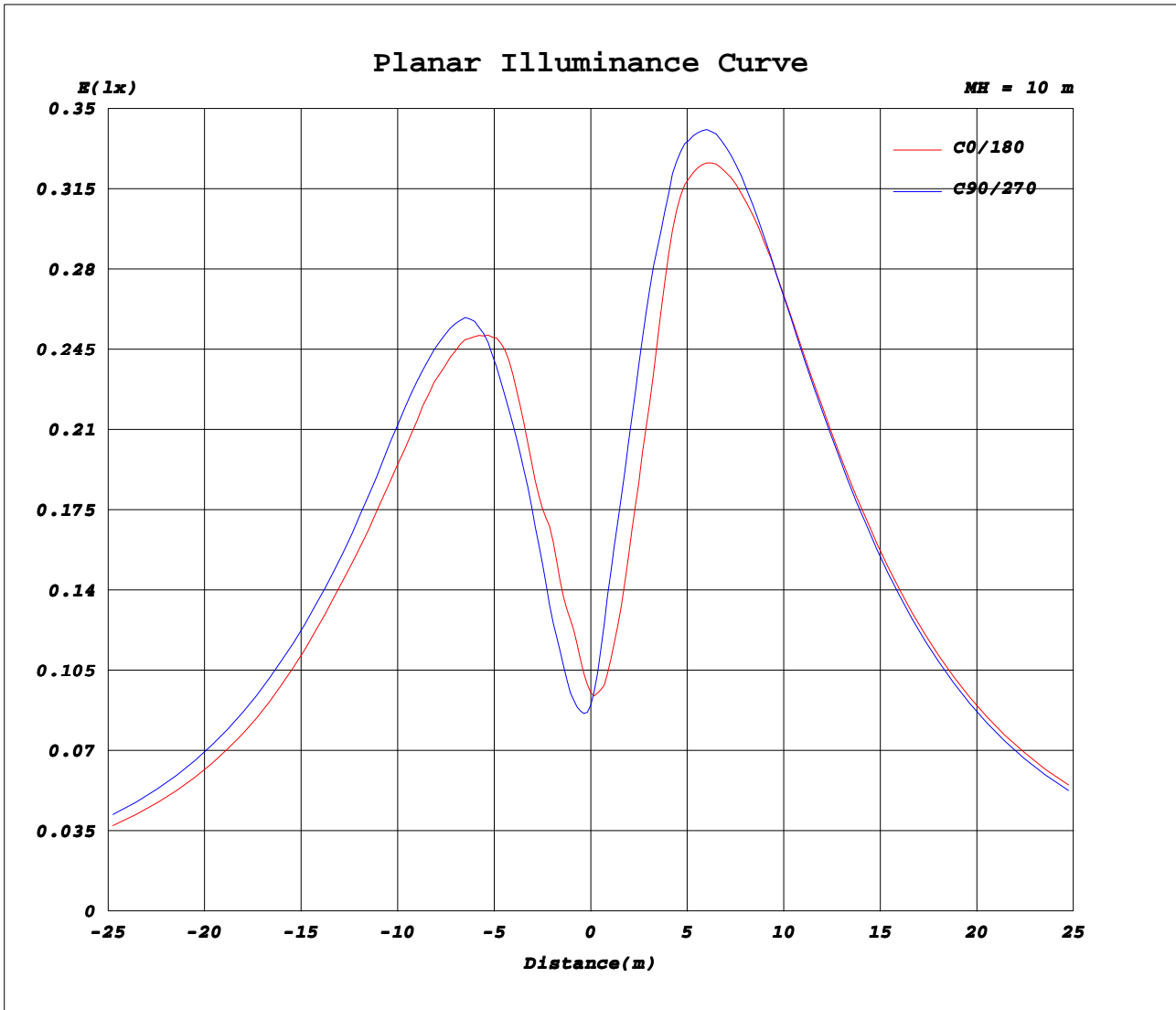
AvgL	cd/m2
L_0~180(65)av	6288
L_0~180(75)av	10980
L_0~180(85)av	33499
L_90~270(65)av	6861
L_90~270(75)av	11902
L_90~270(85)av	36505
L_45(65)av	6679
L_45(75)av	11607
L_45(85)av	35346

Standard: GB/T 29293-2012

C Range: 0 - 360DEG
C Interval: 22.5DEG
Test Speed: HIGH
Temperature:15DEG
Operators:
Test Date:2020-09-15

γ Range: 0 - 180DEG
γ Interval: 1.0DEG
Test System:EVERFINE GO-2000A_V1 SYSTEM V2.0.407.13
Humidity:71%
Test Distance:6.700m [K=1.0000]
Remarks:

Planar Illuminance Curve



C Range: 0 - 360DEG
C Interval: 22.5DEG
Test Speed: HIGH
Temperature: 15DEG
Operators:
Test Date: 2020-09-15

γ Range: 0 - 180DEG
γ Interval: 1.0DEG
Test System: EVERFINE GO-2000A_V1 SYSTEM V2.0.407.13
Humidity: 71%
Test Distance: 6.700m [K=1.0000]
Remarks:

LUMINOUS DISTRIBUTION INTENSITY DATA

Test:U:230.28V I:0.0371A P:7.6521W PF:0.8959 Freq:49.97Hz Lamp Flux:818.716x1 Lm		
NAME: LEDA60E278W	TYPE:LED	WEIGHT:
SPEC.:8W	DIM.:	SERIAL No.:1
MFR.: EVERFINE	SUR.:	Shielding Angle:

Table--1

UNIT: cd

C(DEG) γ (DEG)	0	22.5	45	67.5	90	112.5	135	157.5	180	202.5	225	247.5	270	292.5	315	337.5			
0	9.15	9.15	9.15	9.15	9.15	9.15	9.15	9.15	9.15	9.15	9.15	9.15	9.15	9.15	9.15	9.15			
5	11.9	10.7	10.1	9.62	9.45	9.20	9.22	9.82	10.1	11.6	13.3	14.3	14.1	13.4	12.8	12.3			
10	15.4	14.0	13.1	12.8	12.7	12.6	12.8	13.8	14.4	17.5	20.3	21.1	20.4	18.8	17.0	16.8			
15	19.3	17.8	16.6	17.6	18.0	18.0	19.3	20.6	21.3	24.3	28.1	28.3	28.1	25.2	23.6	21.3			
20	25.5	23.2	21.8	23.6	24.4	23.9	26.7	29.9	30.3	32.8	37.0	34.8	36.3	32.4	31.5	27.3			
25	31.9	29.9	28.5	29.5	31.6	31.3	35.7	39.0	40.2	43.4	46.4	41.6	45.2	38.7	40.8	34.1			
30	37.1	34.7	35.7	35.4	39.8	38.0	43.7	48.0	48.1	51.8	56.5	48.8	53.2	43.5	48.4	41.1			
35	42.7	38.1	42.3	41.0	47.4	42.1	51.7	56.5	56.3	58.1	66.2	54.2	61.6	47.7	54.6	47.3			
40	48.1	41.1	48.1	46.7	54.4	46.0	59.8	64.3	64.8	64.5	75.2	58.7	69.7	51.6	61.6	52.0			
45	52.9	43.6	53.6	50.9	61.0	50.4	67.5	71.0	72.9	70.4	83.3	62.4	77.1	55.1	67.5	55.0			
50	57.5	46.2	58.4	53.5	66.3	53.8	74.5	76.5	80.1	76.7	89.5	65.6	84.1	58.5	72.6	56.8			
55	61.9	49.5	62.7	55.9	71.6	57.2	80.6	80.1	86.8	83.0	95.4	68.8	90.6	61.7	77.8	57.7			
60	64.6	51.7	66.3	57.8	76.4	60.2	86.2	82.5	92.7	88.4	101	71.3	95.9	64.4	81.5	58.0			
65	67.0	52.4	69.3	59.2	79.8	62.9	91.0	83.9	97.7	93.9	105	72.5	99.9	66.7	84.8	57.2			
70	69.0	52.8	71.8	60.0	82.7	65.5	95.1	84.7	102	98.5	108	73.7	103	68.5	87.8	56.1			
75	70.4	53.4	73.6	60.8	85.6	67.1	98.5	84.7	106	102	110	74.7	105	69.8	90.1	54.6			
80	70.6	54.0	74.6	60.5	87.7	68.0	101	83.9	109	105	112	75.9	107	70.4	91.3	53.1			
85	70.7	54.0	75.3	60.0	89.0	68.2	102	82.8	110	106	113	78.3	108	70.5	92.0	52.6			
90	70.7	53.6	75.9	59.6	89.5	68.1	103	81.3	111	107	112	80.0	108	70.2	91.9	52.2			
95	70.0	53.2	75.5	58.6	89.5	67.6	103	79.5	111	107	111	80.8	107	69.3	90.9	52.2			
100	69.0	52.2	74.9	58.2	88.6	66.7	102	77.9	110	106	109	80.6	106	68.1	89.2	52.0			
105	67.6	51.0	73.6	59.5	87.1	65.4	101	76.9	108	104	106	80.0	103	66.3	86.6	52.2			
110	65.8	49.4	71.7	60.7	84.6	63.7	98.5	75.7	106	102	101	79.0	99.7	64.1	83.4	52.8			
115	63.2	47.2	68.6	60.2	81.4	61.6	95.3	74.1	102	98.6	95.8	77.2	95.4	61.3	79.3	53.2			
120	59.7	44.6	65.0	58.1	76.4	59.0	90.8	72.8	97.3	94.0	89.5	74.8	90.1	57.9	74.3	53.2			
125	55.7	42.3	61.2	56.2	71.4	55.7	85.7	71.7	91.5	88.8	82.8	71.7	83.7	54.1	68.6	52.9			
130	50.8	40.1	56.8	53.8	65.7	52.0	79.8	70.6	85.5	82.3	75.2	67.8	76.3	49.6	62.6	51.9			
135	44.5	37.6	50.9	49.7	59.5	47.8	71.9	67.8	78.1	74.7	68.3	61.4	67.0	44.8	55.4	47.9			
140	36.5	34.7	44.5	44.1	53.3	43.5	63.0	62.1	68.6	65.0	60.5	52.9	56.4	38.8	46.6	40.9			
145	28.1	30.3	36.8	37.4	45.6	37.5	53.4	52.8	57.6	54.8	52.0	42.7	45.5	32.5	36.1	32.1			
150	19.7	22.9	28.1	29.7	36.4	31.2	41.6	41.5	45.0	45.0	43.5	32.4	33.4	25.4	26.8	21.9			
155	10.6	13.9	19.2	21.5	27.7	24.4	26.7	27.5	31.6	31.4	32.1	22.6	21.8	16.0	12.9	11.9			
160	5.65	7.94	10.7	13.2	15.4	16.2	13.7	14.2	17.9	17.9	16.6	13.2	11.0	7.84	5.17	5.35			
165	0.96	2.18	3.53	4.17	3.25	4.68	3.24	4.12	5.47	2.68	3.19	2.40	1.40	1.42	0.92	1.36			
170	0.38	0.42	0.46	0.49	0.52	0.50	0.47	0.46	0.51	0.49	0.46	0.43	0.40	0.40	0.38	0.41			
175	0.28	0.27	0.29	0.27	0.30	0.28	0.30	0.28	0.27	0.27	0.26	0.28	0.30	0.29	0.30	0.31			
180	0.26	0.27	0.27	0.27	0.28	0.28	0.28	0.29	0.26	0.26	0.26	0.28	0.28	0.29	0.28	0.29			

C Range: 0 - 360DEG
C Interval: 22.5DEG
Test Speed: HIGH
Temperature:15DEG
Operators:
Test Date:2020-09-15

γ Range: 0 - 180DEG
γ Interval: 1.0DEG
Test System:EVERFINE GO-2000A_V1 SYSTEM V2.0.407.13
Humidity:71%
Test Distance:6.700m [K=1.0000]
Remarks: