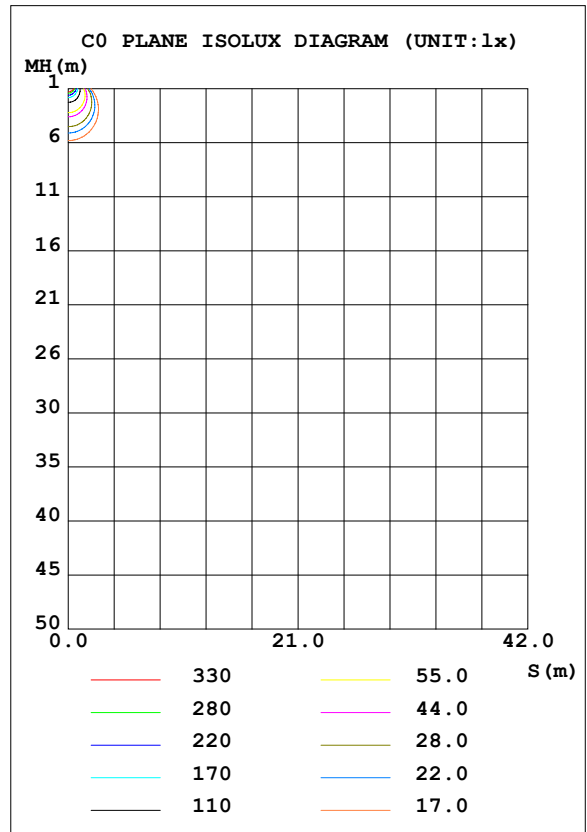
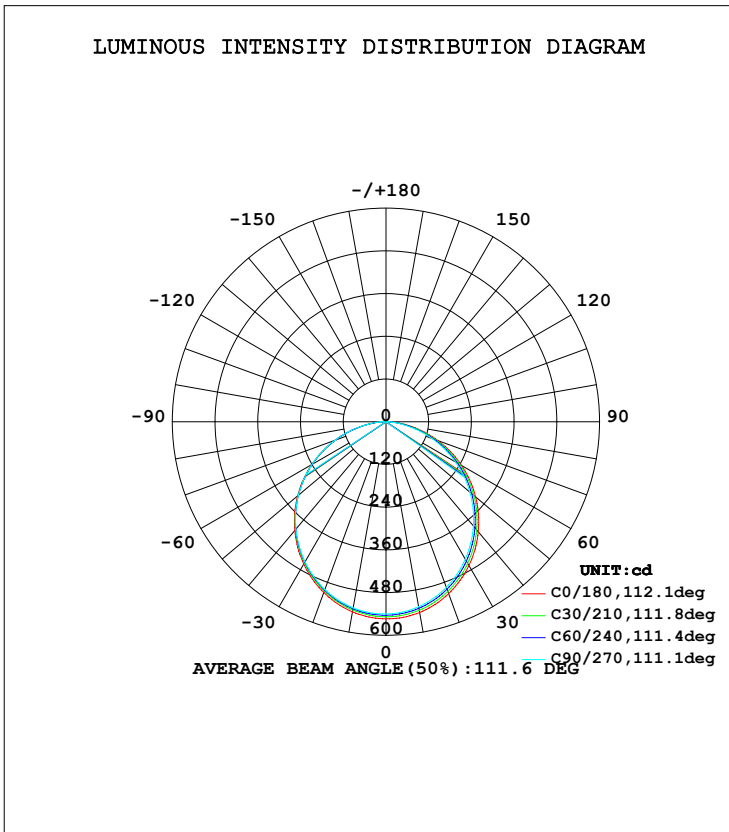


LUMINAIRE PHOTOMETRIC TEST REPORT

Test:U:220.2V I:0.1010A P:19.70W PF:0.8780 Lamp Flux:1545.55x1 lm		
NAME: EV20W4K	TYPE:LED	WEIGHT:
SPEC.:	DIM.:	SERIAL No.:
MFR.: EUROTECH LIGHTING	SUR.:340mm	PROTECTION ANGLE:

DATA OF LAMP		PHOTOMETRIC DATA Eff: 78.45 lm/W			
MODEL	EV20W4K	I _{max} (cd)	553.7	S/MH (C0/180)	1.24
NOMINAL POWER (W)		LOR (%)	100.0	S/MH (C90/270)	1.25
RATED VOLTAGE (V)		TOTAL FLUX (lm)	1545.5	η UP, DN (C0-180)	0.2, 48.9
NOMINAL FLUX (lm)	1545.55	CIE CLASS	DIRECT	η UP, DN (C180-360)	0.3, 50.6
LAMPS INSIDE	1	η up (%)	0.5	CIBSE SHR NOM	1.25
TEST VOLTAGE (V)		η down (%)	99.5	CIBSE SHR MAX	1.35



C Range: 0 - 360DEG
 C Interval: 15.0DEG
 Test Speed: HIGH
 Temperature: 25.3DEG
 Operators:
 Test Date: 2014-11-21

γ Range: 0 - 180DEG
 γ Interval: 1.0DEG
 Test System: EVERFINE GO-2000B_V1 SYSTEM V2.0.287
 Humidity: 65.0%
 Test Distance: 8.260m [K=1.0000]
 Remarks:

ZONAL FLUX DIAGRAM

ZONAL FLUX DIAGRAM:

γ	C0	C45	C90	C135	C180	C225	C270	C315	γ	Φ zone	Φ total	%lum, lamp
10	544.1	534.9	527.6	523.4	542.2	534.6	531.0	528.4	0- 10	51.23	51.23	3.31,3.31
20	514.0	504.2	495.3	491.0	510.7	503.8	501.9	500.5	10- 20	146.3	197.5	12.8,12.8
30	466.2	456.0	445.8	441.7	461.9	455.9	455.0	454.9	20- 30	220.7	418.3	27.1,27.1
40	403.4	393.4	382.3	378.8	398.6	393.5	393.7	394.7	30- 40	265.0	683.3	44.2,44.2
50	328.8	319.4	307.8	305.2	324.1	320.1	321.2	323.2	40- 50	274.2	957.5	62,62
60	244.9	236.8	225.2	223.7	241.1	237.6	240.2	242.5	50- 60	248.0	1206	78,78
70	155.1	147.6	137.1	136.2	151.5	149.3	152.5	155.6	60- 70	190.0	1395	90.3,90.3
80	67.21	60.69	52.08	52.74	64.26	63.40	65.47	70.03	70- 80	109.6	1505	97.4,97.4
90	10.59	7.148	3.309	6.290	12.36	11.29	9.290	12.40	80- 90	32.92	1538	99.5,99.5
100	5.636	4.775	4.046	4.975	9.938	8.433	6.817	7.716	90-100	7.236	1545	100,100
110	0	0	0	0	0	0	0	0	100-110	0.3487	1546	100,100
120	0	0	0	0	0	0	0	0	110-120	0	1546	100,100
130	0	0	0	0	0	0	0	0	120-130	0	1546	100,100
140	0	0	0	0	0	0	0	0	130-140	0	1546	100,100
150	0	0	0	0	0	0	0	0	140-150	0	1546	100,100
160	0	0	0	0	0	0	0	0	150-160	0	1546	100,100
170	0	0	0	0	0	0	0	0	160-170	0	1546	100,100
180	0	0	0	0	0	0	0	0	170-180	0	1546	100,100
DEG	LUMINOUS INTENSITY:cd									UNIT:lm		

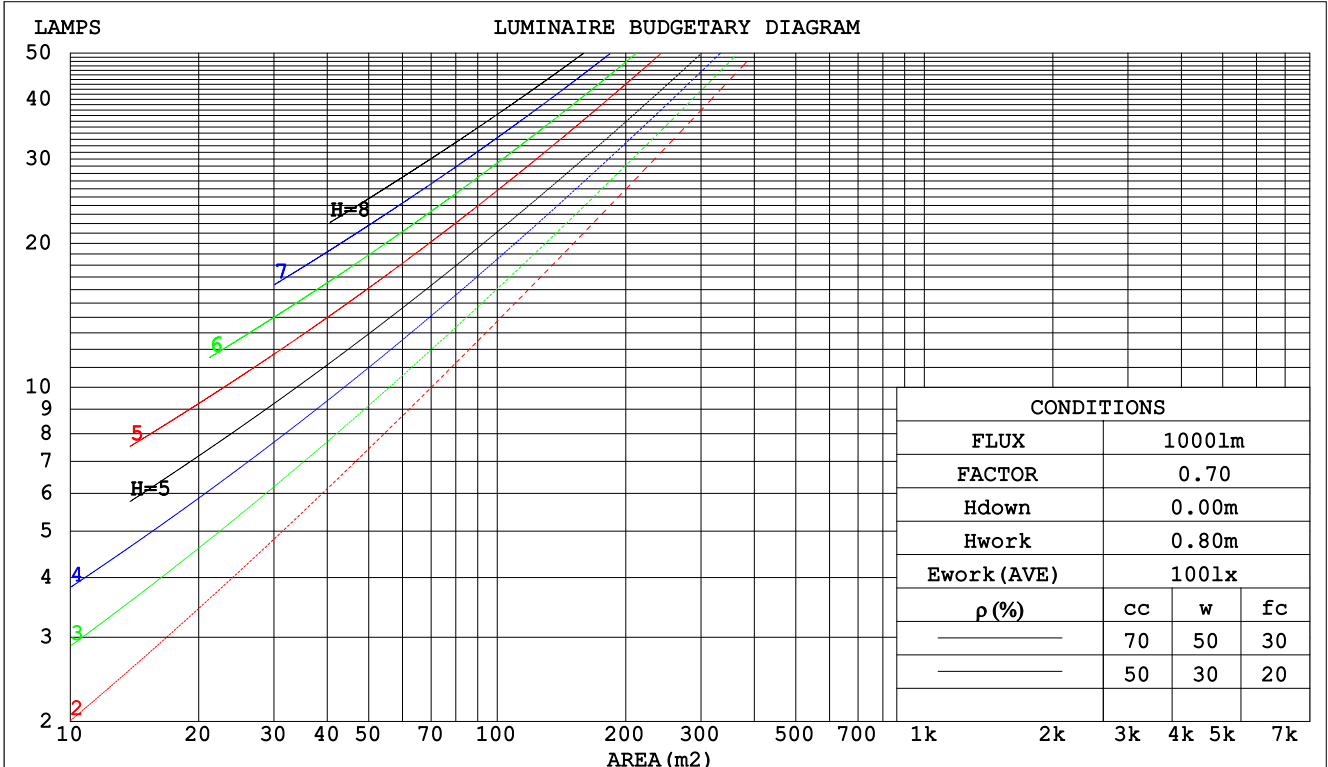
C Range: 0 - 360DEG
 C Interval: 15.0DEG
 Test Speed: HIGH
 Temperature:25.3DEG
 Operators:
 Test Date:2014-11-21

γ Range: 0 - 180DEG
 γ Interval: 1.0DEG
 Test System:EVERFINE GO-2000B_V1 SYSTEM V2.0.287
 Humidity:65.0%
 Test Distance:8.260m [K=1.0000]
 Remarks:

CU AND LUMINAIRE BUDGETARY ESTIMATE DIAGRAM

Test:U:220.2V I:0.1010A P:19.70W PF:0.8780 Lamp Flux:1545.55x1 lm		
NAME:	TYPE:LED	WEIGHT:
SPEC.:	DIM.:	SERIAL No.:
MFR.:	SUR.:340mm	PROTECTION ANGLE:

pcc	80%			70%			50%			30%			10%			0
pw	50%	30%	10%	50%	30%	10%	50%	30%	10%	50%	30%	10%	50%	30%	10%	0
pfc	20%			20%			20%			20%			20%			0
RCR	RCR:Room Cavity Ratio						Coefficients of Utilization(CU)									
0.0	1.19	1.19	1.19	1.16	1.16	1.16	1.11	1.11	1.11	1.06	1.06	1.06	1.02	1.02	1.02	.00
1.0	1.04	.99	.95	1.01	.97	.94	.97	.94	.91	.93	.90	.88	.89	.87	.85	.83
2.0	.90	.83	.77	.88	.82	.76	.85	.79	.75	.81	.77	.73	.78	.74	.71	.69
3.0	.79	.71	.64	.77	.70	.64	.74	.68	.62	.72	.66	.61	.69	.64	.60	.58
4.0	.70	.61	.54	.69	.60	.54	.66	.59	.53	.64	.57	.52	.61	.56	.52	.49
5.0	.63	.53	.47	.61	.53	.46	.59	.52	.46	.57	.51	.45	.55	.49	.45	.43
6.0	.56	.47	.41	.55	.47	.41	.53	.46	.40	.52	.45	.40	.50	.44	.39	.37
7.0	.51	.42	.36	.50	.42	.36	.49	.41	.36	.47	.40	.35	.46	.40	.35	.33
8.0	.47	.38	.32	.46	.38	.32	.44	.37	.32	.43	.36	.32	.42	.36	.31	.29
9.0	.43	.34	.29	.42	.34	.29	.41	.34	.29	.40	.33	.28	.39	.33	.28	.26
10.0	.39	.31	.26	.39	.31	.26	.38	.31	.26	.37	.30	.26	.36	.30	.26	.24



C Range: 0 - 360DEG
 C Interval: 15.0DEG
 Test Speed: HIGH
 Temperature:25.3DEG
 Operators:
 Test Date:2014-11-21

γ Range: 0 - 180DEG
 γ Interval: 1.0DEG
 Test System:EVERFINE GO-2000B_V1 SYSTEM V2.0.287
 Humidity:65.0%
 Test Distance:8.260m [K=1.0000]
 Remarks:

WEC AND CCEC

Test:U:220.2V I:0.1010A P:19.70W PF:0.8780 Lamp Flux:1545.55x1 lm									
NAME:					TYPE:LED			WEIGHT:	
SPEC.:					DIM.:			SERIAL No.:	
MFR.:					SUR.:340mm			PROTECTION ANGLE:	

ρcc	80%			70%			50%			30%			10%			0
ρw	50%	30%	10%	50%	30%	10%	50%	30%	10%	50%	30%	10%	50%	30%	10%	0
ρfc	20%			20%			20%			20%			20%			0
RCR	RCR:Room Cavity Ratio						Wall Exitance Coefficients(WEC)									
0.0																
1.0	.313	.178	.056	.305	.174	.055	.292	.167	.053	.279	.161	.052	.268	.155	.050	
2.0	.293	.161	.049	.287	.158	.049	.275	.153	.047	.264	.148	.046	.254	.143	.045	
3.0	.271	.144	.043	.265	.142	.043	.255	.138	.042	.245	.134	.041	.236	.131	.040	
4.0	.250	.130	.038	.245	.128	.038	.235	.125	.037	.227	.122	.037	.219	.119	.036	
5.0	.231	.118	.034	.226	.116	.034	.218	.113	.033	.210	.111	.033	.203	.108	.033	
6.0	.214	.107	.031	.210	.106	.031	.202	.104	.030	.196	.102	.030	.189	.100	.030	
7.0	.199	.098	.028	.195	.097	.028	.189	.095	.027	.183	.094	.027	.177	.092	.027	
8.0	.186	.091	.026	.183	.090	.025	.177	.088	.025	.171	.087	.025	.166	.085	.025	
9.0	.174	.084	.024	.171	.083	.023	.166	.082	.023	.161	.081	.023	.156	.079	.023	
10.0	.164	.078	.022	.161	.078	.022	.156	.077	.022	.152	.075	.021	.147	.074	.021	

ρcc	80%			70%			50%			30%			10%			0
ρw	50%	30%	10%	50%	30%	10%	50%	30%	10%	50%	30%	10%	50%	30%	10%	0
ρfc	20%			20%			20%			20%			20%			0
RCR	RCR:Room Cavity Ratio						Ceiling Cavity Exitance Coefficients(CCEC)									
0.0	.194	.194	.194	.166	.166	.166	.113	.113	.113	.065	.065	.065	.021	.021	.021	
1.0	.184	.160	.138	.158	.137	.119	.108	.094	.082	.062	.055	.048	.020	.018	.015	
2.0	.176	.136	.102	.151	.117	.088	.103	.081	.061	.060	.047	.036	.019	.015	.012	
3.0	.168	.118	.078	.144	.102	.068	.099	.071	.047	.057	.041	.028	.018	.013	.009	
4.0	.161	.105	.062	.138	.091	.054	.095	.063	.038	.055	.037	.022	.018	.012	.007	
5.0	.153	.094	.051	.132	.082	.044	.091	.057	.031	.053	.034	.019	.017	.011	.006	
6.0	.146	.086	.043	.126	.075	.037	.087	.052	.026	.050	.031	.016	.016	.010	.005	
7.0	.139	.079	.037	.120	.069	.032	.083	.048	.023	.048	.028	.014	.016	.009	.005	
8.0	.133	.073	.033	.114	.064	.028	.079	.045	.020	.046	.026	.012	.015	.009	.004	
9.0	.127	.068	.029	.109	.059	.025	.076	.042	.018	.044	.025	.011	.014	.008	.004	
10.0	.121	.064	.026	.104	.056	.023	.072	.039	.016	.042	.023	.010	.014	.008	.003	

C Range: 0 - 360DEG
 C Interval: 15.0DEG
 Test Speed: HIGH
 Temperature:25.3DEG
 Operators:
 Test Date:2014-11-21

γ Range: 0 - 180DEG
 γ Interval: 1.0DEG
 Test System:EVERFINE GO-2000B_V1 SYSTEM V2.0.287
 Humidity:65.0%
 Test Distance:8.260m [K=1.0000]
 Remarks:

UGR(Unified Glare Rating) Table

Test:U:220.2V I:0.1010A P:19.70W PF:0.8780 Lamp Flux:1545.55x1 lm										
NAME:					TYPE:LED			WEIGHT:		
SPEC.:					DIM.:			SERIAL No.:		
MFR.:					SUR.:340mm			PROTECTION ANGLE:		
ceiling/cavity	0.7	0.7	0.5	0.5	0.3	0.7	0.7	0.5	0.5	0.3
walls	0.5	0.3	0.5	0.3	0.3	0.5	0.3	0.5	0.3	0.3
working plane	0.2	0.2	0.2	0.2	0.2	0.2	0.2	0.2	0.2	0.2
Room dimensions	Viewed crosswise					Viewed endwise				
x = 2H y = 2H	26.5	28.0	26.8	28.2	28.4	26.2	27.7	26.4	27.9	28.1
3H	28.1	29.5	28.4	29.7	30.0	27.6	29.0	27.9	29.3	29.5
4H	28.7	30.0	29.0	30.3	30.6	28.2	29.5	28.5	29.8	30.0
6H	29.2	30.4	29.5	30.7	31.0	28.5	29.8	28.9	30.1	30.4
8H	29.3	30.5	29.7	30.8	31.1	28.6	29.8	29.0	30.1	30.4
12H	29.4	30.6	29.8	30.9	31.2	28.6	29.8	29.0	30.1	30.4
4H 2H	27.1	28.4	27.4	28.7	28.9	26.8	28.2	27.1	28.4	28.7
3H	28.8	30.0	29.2	30.3	30.6	28.5	29.6	28.8	29.9	30.2
4H	29.6	30.7	30.0	31.0	31.3	29.1	30.2	29.5	30.5	30.9
6H	30.2	31.1	30.6	31.5	31.9	29.6	30.5	30.0	30.9	31.3
8H	30.4	31.3	30.8	31.7	32.1	29.7	30.6	30.1	31.0	31.4
12H	30.6	31.4	31.0	31.8	32.2	29.8	30.6	30.2	31.0	31.4
8H 4H	29.8	30.7	30.2	31.1	31.5	29.4	30.3	29.8	30.7	31.1
6H	30.6	31.3	31.0	31.7	32.2	30.0	30.7	30.5	31.2	31.6
8H	30.9	31.5	31.3	32.0	32.4	30.2	30.9	30.7	31.3	31.8
12H	31.1	31.7	31.6	32.1	32.6	30.3	30.9	30.8	31.4	31.9
12H 4H	29.8	30.6	30.3	31.0	31.5	29.4	30.2	29.9	30.6	31.0
6H	30.6	31.3	31.1	31.7	32.2	30.1	30.7	30.5	31.2	31.6
8H	30.9	31.5	31.4	32.0	32.5	30.3	30.9	30.8	31.3	31.8
Variations with the observer position at spacings:										
S = 1.0H	+ 0.2 / - 0.2					+ 0.2 / - 0.2				
1.5H	+ 0.2 / - 0.3					+ 0.2 / - 0.4				
2.0H	+ 0.2 / - 0.3					+ 0.2 / - 0.3				

CIE Pub.117 Corrected 1546 lm Total Lamp Luminous Flux. (8log(F/F0) = 1.5)

C Range: 0 - 360DEG
 C Interval: 15.0DEG
 Test Speed: HIGH
 Temperature:25.3DEG
 Operators:
 Test Date:2014-11-21

γ Range: 0 - 180DEG
 γ Interval: 1.0DEG
 Test System:EVERFINE GO-2000B_V1 SYSTEM V2.0.287
 Humidity:65.0%
 Test Distance:8.260m [K=1.0000]
 Remarks:

UTILIZATION FACTORS TABLE

Test:U:220.2V I:0.1010A P:19.70W PF:0.8780 Lamp Flux:1545.55x1 lm		
NAME:	TYPE:LED	WEIGHT:
SPEC.:	DIM.:	SERIAL No.:
MFR.:	SUR.:340mm	PROTECTION ANGLE:

REFLECTANCE										
Ceiling	0.8	0.8	0.8	0.7	0.7	0.7	0.5	0.5	0.5	0
Walls	0.7	0.5	0.3	0.7	0.5	0.3	0.7	0.5	0.3	0
Working plane	0.2	0.2	0.2	0.2	0.2	0.2	0.2	0.2	0.2	0
ROOM INDEX	UTILIZATION FACTORS (PERCENT) $k(RI) \times RCR = 5$									
k = 0.60	57	46	39	57	45	39	55	45	38	32
0.80	67	56	48	66	55	48	64	54	48	41
1.00	76	64	57	74	64	57	72	65	56	49
1.25	83	72	65	81	71	65	79	70	64	56
1.50	88	78	71	86	77	70	83	75	69	61
2.00	95	86	79	93	85	79	89	82	77	69
2.50	99	91	84	96	89	84	93	87	82	73
3.00	102	95	89	100	93	88	96	90	86	77
4.00	106	100	95	104	98	94	99	95	91	82
5.00	108	103	99	106	101	98	101	98	95	85
ROOM INDEX	UF(total)									Direct
According to DIN EN 13032-2 2004			Suspended				SHRNOM = 1.25			

C Range: 0 - 360DEG
 C Interval: 15.0DEG
 Test Speed: HIGH
 Temperature:25.3DEG
 Operators:
 Test Date:2014-11-21

γ Range: 0 - 180DEG
 γ Interval: 1.0DEG
 Test System:EVERFINE GO-2000B_V1 SYSTEM V2.0.287
 Humidity:65.0%
 Test Distance:8.260m [K=1.0000]
 Remarks:

ISOCANDELA DIAGRAM

Test:U:220.2V I:0.1010A P:19.70W PF:0.8780 Lamp Flux:1545.55x1 lm		
NAME:	TYPE:LED	WEIGHT:
SPEC.:	DIM.:	SERIAL No.:
MFR.:	SUR.:340mm	PROTECTION ANGLE:

Conical surface Flux(90deg):

821.47 lm

%lum = 53.2%

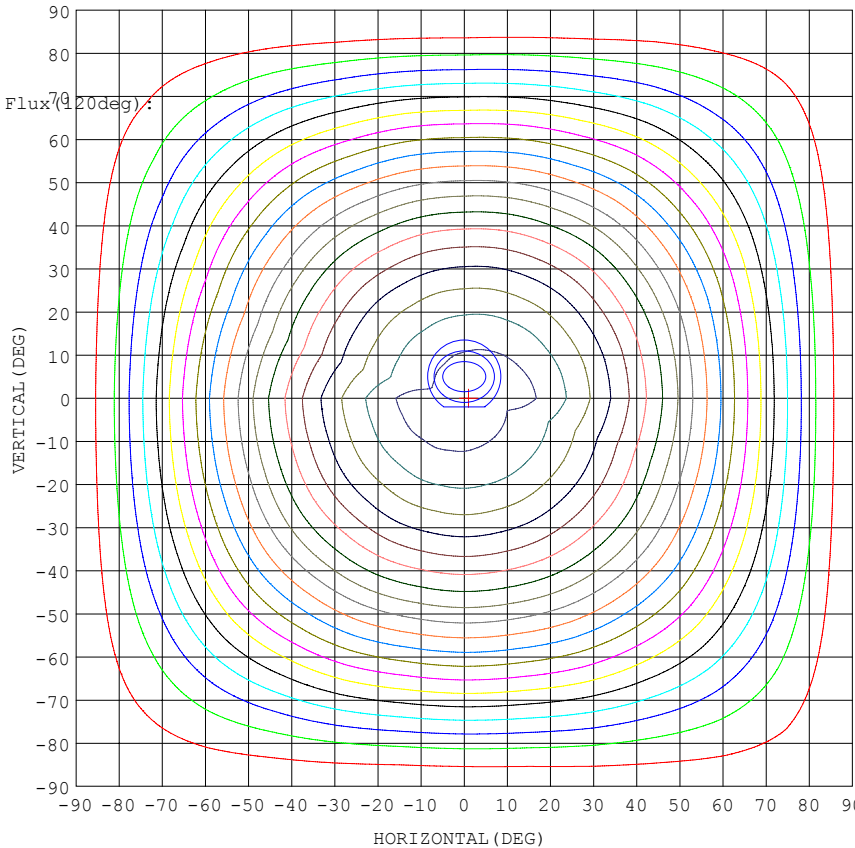
%lamp = 53.2%

Conical surface Flux(70deg):

1205.5 lm

%lum = 78.0%

%lamp = 78.0%



1. AVG=535.8, MIN=528.3
2. AVG=535.4, MIN=523.6
3. AVG=534.1, MIN=517.8

Imax:553.7 (H1.0, V0.0)
(At:C=0.0, Gamma=1.0)

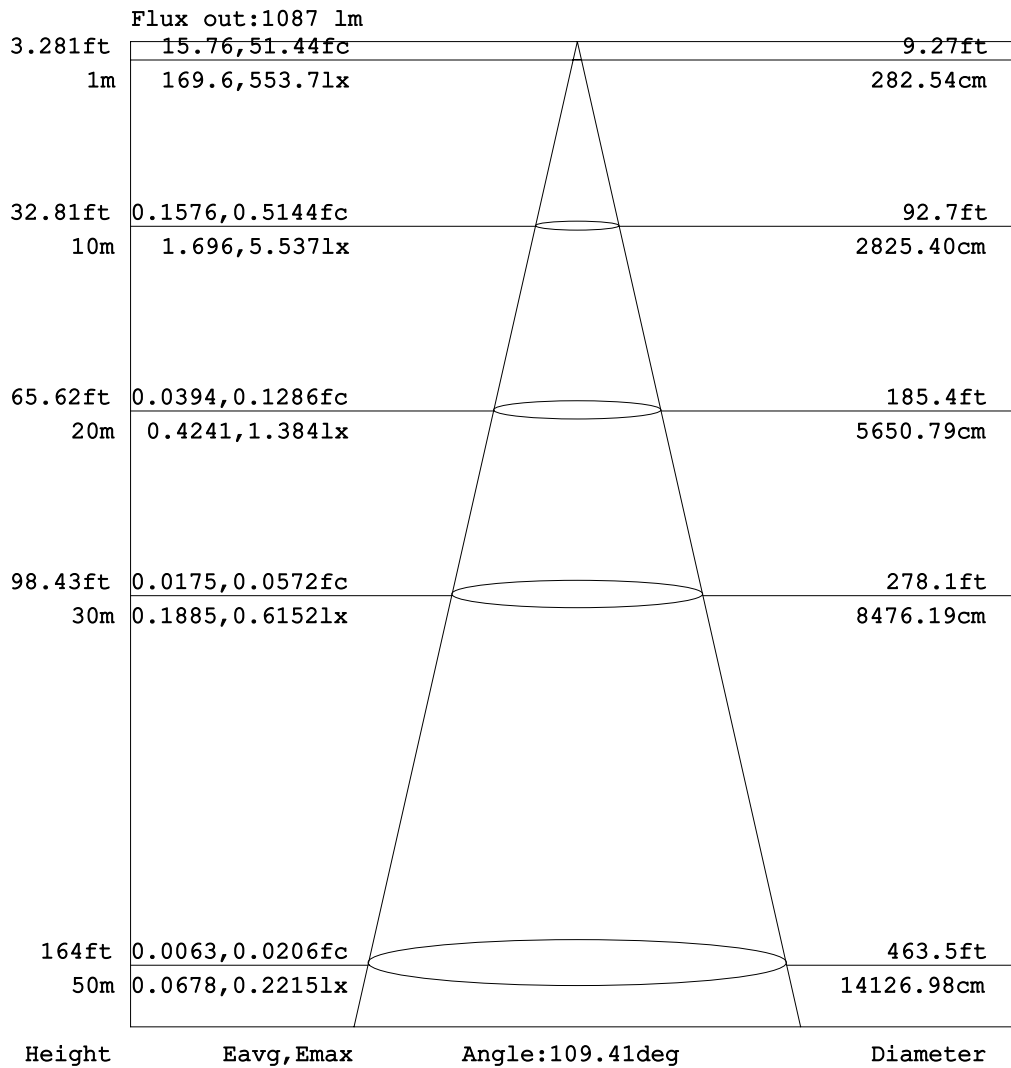
UNIT: cd

C Range: 0 - 360DEG
C Interval: 15.0DEG
Test Speed: HIGH
Temperature:25.3DEG
Operators:
Test Date:2014-11-21

γ Range: 0 - 180DEG
γ Interval: 1.0DEG
Test System:EVERFINE GO-2000B_V1 SYSTEM V2.0.287
Humidity:65.0%
Test Distance:8.260m [K=1.0000]
Remarks:

AAI Figure

Test:U:220.2V I:0.1010A P:19.70W PF:0.8780 Lamp Flux:1545.55x1 lm		
NAME:	TYPE:LED	WEIGHT:
SPEC.:	DIM.:	SERIAL No.:
MFR.:	SUR.:340mm	PROTECTION ANGLE:



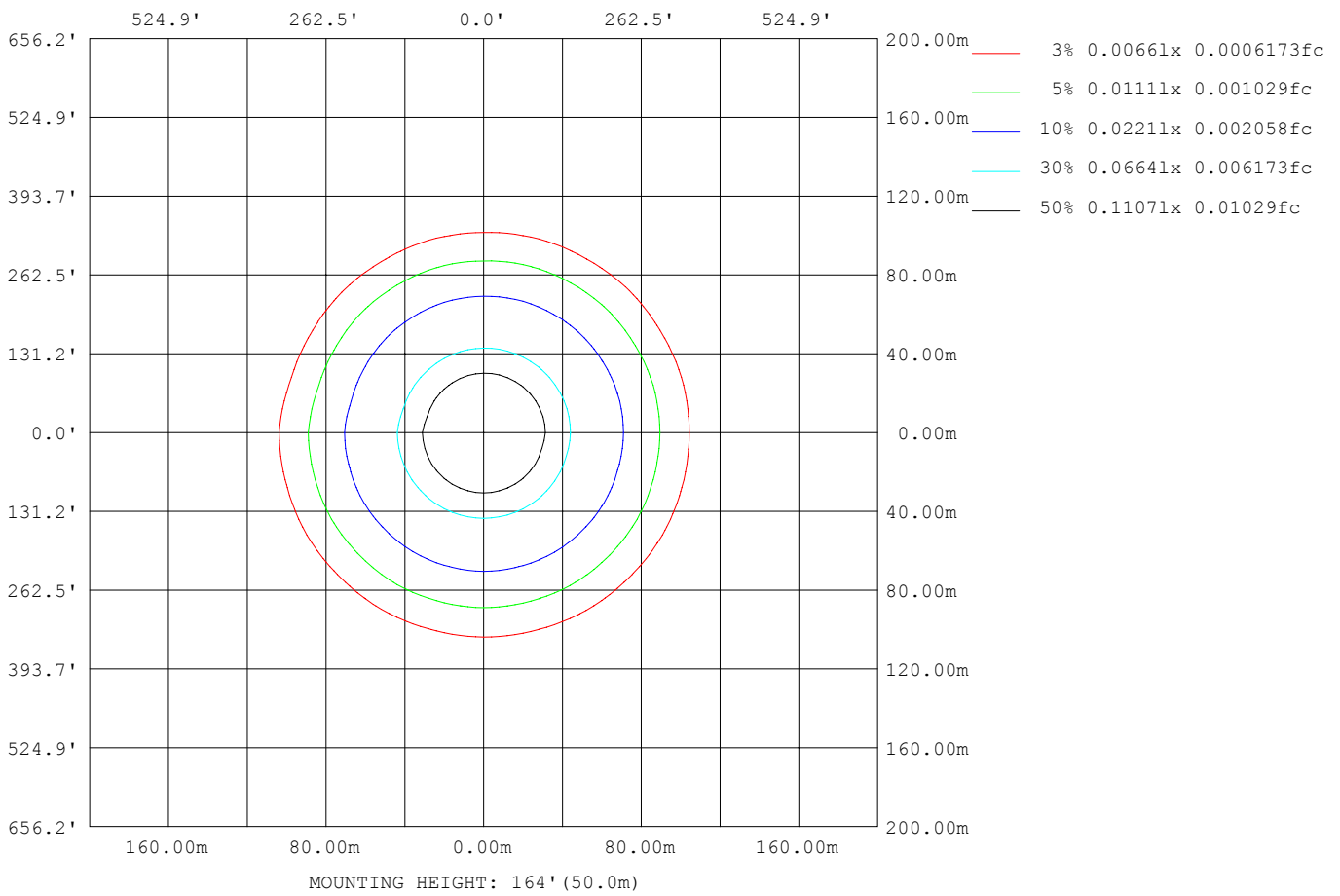
Note: The Curves indicate the illuminated area and the average illumination when the luminaire is at different distance.

C Range: 0 - 360DEG
 C Interval: 15.0DEG
 Test Speed: HIGH
 Temperature: 25.3DEG
 Operators:
 Test Date: 2014-11-21

γ Range: 0 - 180DEG
 γ Interval: 1.0DEG
 Test System: EVERFINE GO-2000B_V1 SYSTEM V2.0.287
 Humidity: 65.0%
 Test Distance: 8.260m [K=1.0000]
 Remarks:

ISOLUX DIAGRAM

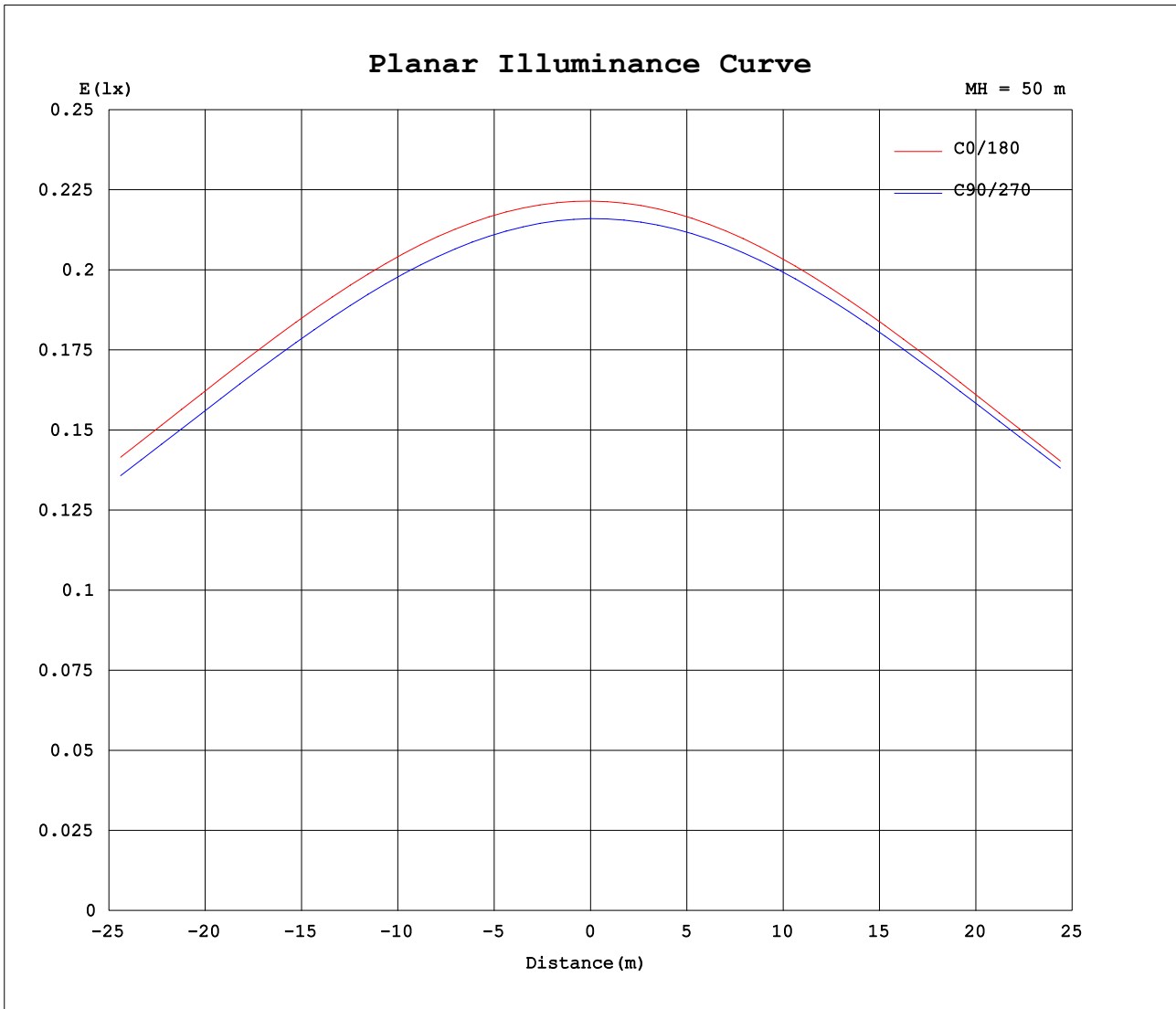
Test:U:220.2V I:0.1010A P:19.70W PF:0.8780 Lamp Flux:1545.55x1 lm		
NAME:	TYPE:LED	WEIGHT:
SPEC.:	DIM.:	SERIAL No.:
MFR.:	SUR.:340mm	PROTECTION ANGLE:



C Range: 0 - 360DEG
 C Interval: 15.0DEG
 Test Speed: HIGH
 Temperature:25.3DEG
 Operators:
 Test Date:2014-11-21

γ Range: 0 - 180DEG
 γ Interval: 1.0DEG
 Test System:EVERFINE GO-2000B_V1 SYSTEM V2.0.287
 Humidity:65.0%
 Test Distance:8.260m [K=1.0000]
 Remarks:

Planar Illuminance Curve



C Range: 0 - 360DEG
 C Interval: 15.0DEG
 Test Speed: HIGH
 Temperature: 25.3DEG
 Operators:
 Test Date: 2014-11-21

γ Range: 0 - 180DEG
 γ Interval: 1.0DEG
 Test System: EVERFINE GO-2000B_V1 SYSTEM V2.0.287
 Humidity: 65.0%
 Test Distance: 8.260m [K=1.0000]
 Remarks:

LUMINOUS DISTRIBUTION INTENSITY DATA

Test:U:220.2V I:0.1010A P:19.70W PF:0.8780 Lamp Flux:1545.55x1 lm		
NAME:	TYPE:LED	WEIGHT:
SPEC.:	DIM.:	SERIAL No.:
MFR.:	SUR.:340mm	PROTECTION ANGLE:

Table--1

UNIT: cd

C (DEG) \ γ (DEG)	0	15	30	45	60	75	90	105	120	135	150	165	180	195	210	225	240	255	270
0	554	551	548	545	543	542	540	539	537	536	535	534	554	551	548	545	543	542	540
5	552	548	545	543	540	538	536	535	533	532	531	530	551	547	545	543	541	539	538
10	544	541	538	535	532	530	528	526	524	523	522	522	542	539	537	535	534	532	531
15	531	528	525	522	519	516	514	512	510	509	508	508	529	526	524	522	521	519	519
20	514	511	507	504	501	498	495	494	491	491	489	490	511	508	506	504	504	502	502
25	492	489	485	482	478	476	472	471	469	468	467	467	488	485	484	482	482	480	480
30	466	464	459	456	452	449	446	444	442	442	440	441	462	459	458	456	456	454	455
35	436	434	429	426	422	419	416	414	412	412	410	411	432	429	429	426	427	425	426
40	403	401	396	393	389	386	382	381	379	379	378	379	399	396	396	394	394	393	394
45	367	365	361	358	353	350	346	345	343	343	342	343	363	360	360	358	359	357	359
50	329	327	322	319	314	312	308	307	305	305	304	306	324	322	322	320	321	320	321
55	288	287	282	279	274	272	267	267	264	265	264	266	283	281	282	280	281	280	282
60	245	244	239	237	231	230	225	225	222	224	222	225	241	239	240	238	239	238	240
65	201	200	195	193	187	186	182	181	179	180	179	182	197	194	196	194	196	194	197
70	155	154	149	148	143	141	137	137	135	136	136	138	151	150	151	149	151	150	152
75	110	109	105	103	98.5	96.4	93.2	93.1	91.6	92.9	92.7	94.7	107	105	107	105	107	106	108
80	67.2	66.4	62.8	60.7	56.6	54.8	52.1	52.2	51.3	52.7	52.7	54.6	64.3	63.5	64.4	63.4	64.3	63.8	65.5
85	31.5	30.5	27.8	26.1	23.1	21.3	19.5	19.7	19.4	20.9	21.3	23.0	30.1	29.6	30.0	29.1	29.4	28.7	30.0
90	10.6	9.94	8.55	7.15	5.30	3.87	3.31	3.90	5.05	6.29	7.03	7.66	12.4	12.4	12.4	11.3	10.3	9.05	9.29
95	5.55	5.35	4.99	4.42	3.69	3.12	2.97	3.30	3.91	4.53	5.13	5.57	9.65	9.45	9.12	8.38	7.49	6.66	6.32
100	5.64	5.51	5.24	4.77	4.12	3.96	4.05	4.22	4.48	4.98	5.58	6.02	9.94	9.49	9.11	8.43	7.62	7.02	6.82
105	0.00	0.00	0.00	0.00	0.00	0.00	0.00	0.00	0.00	0.00	0.00	0.00	0.00	0.00	0.00	0.00	0.00	0.00	0.00
110	0.00	0.00	0.00	0.00	0.00	0.00	0.00	0.00	0.00	0.00	0.00	0.00	0.00	0.00	0.00	0.00	0.00	0.00	0.00
115	0.00	0.00	0.00	0.00	0.00	0.00	0.00	0.00	0.00	0.00	0.00	0.00	0.00	0.00	0.00	0.00	0.00	0.00	0.00
120	0.00	0.00	0.00	0.00	0.00	0.00	0.00	0.00	0.00	0.00	0.00	0.00	0.00	0.00	0.00	0.00	0.00	0.00	0.00
125	0.00	0.00	0.00	0.00	0.00	0.00	0.00	0.00	0.00	0.00	0.00	0.00	0.00	0.00	0.00	0.00	0.00	0.00	0.00
130	0.00	0.00	0.00	0.00	0.00	0.00	0.00	0.00	0.00	0.00	0.00	0.00	0.00	0.00	0.00	0.00	0.00	0.00	0.00
135	0.00	0.00	0.00	0.00	0.00	0.00	0.00	0.00	0.00	0.00	0.00	0.00	0.00	0.00	0.00	0.00	0.00	0.00	0.00
140	0.00	0.00	0.00	0.00	0.00	0.00	0.00	0.00	0.00	0.00	0.00	0.00	0.00	0.00	0.00	0.00	0.00	0.00	0.00
145	0.00	0.00	0.00	0.00	0.00	0.00	0.00	0.00	0.00	0.00	0.00	0.00	0.00	0.00	0.00	0.00	0.00	0.00	0.00
150	0.00	0.00	0.00	0.00	0.00	0.00	0.00	0.00	0.00	0.00	0.00	0.00	0.00	0.00	0.00	0.00	0.00	0.00	0.00
155	0.00	0.00	0.00	0.00	0.00	0.00	0.00	0.00	0.00	0.00	0.00	0.00	0.00	0.00	0.00	0.00	0.00	0.00	0.00
160	0.00	0.00	0.00	0.00	0.00	0.00	0.00	0.00	0.00	0.00	0.00	0.00	0.00	0.00	0.00	0.00	0.00	0.00	0.00
165	0.00	0.00	0.00	0.00	0.00	0.00	0.00	0.00	0.00	0.00	0.00	0.00	0.00	0.00	0.00	0.00	0.00	0.00	0.00
170	0.00	0.00	0.00	0.00	0.00	0.00	0.00	0.00	0.00	0.00	0.00	0.00	0.00	0.00	0.00	0.00	0.00	0.00	0.00
175	0.00	0.00	0.00	0.00	0.00	0.00	0.00	0.00	0.00	0.00	0.00	0.00	0.00	0.00	0.00	0.00	0.00	0.00	0.00
180	0.00	0.00	0.00	0.00	0.00	0.00	0.00	0.00	0.00	0.00	0.00	0.00	0.00	0.00	0.00	0.00	0.00	0.00	0.00

C Range: 0 - 360DEG
 C Interval: 15.0DEG
 Test Speed: HIGH
 Temperature:25.3DEG
 Operators:
 Test Date:2014-11-21

γ Range: 0 - 180DEG
 γ Interval: 1.0DEG
 Test System:EVERFINE GO-2000B_V1 SYSTEM V2.0.287
 Humidity:65.0%
 Test Distance:8.260m [K=1.0000]
 Remarks:

LUMINOUS DISTRIBUTION INTENSITY DATA

Test:U:220.2V I:0.1010A P:19.70W PF:0.8780 Lamp Flux:1545.55x1 lm		
NAME:	TYPE:LED	WEIGHT:
SPEC.:	DIM.:	SERIAL No.:
MFR.:	SUR.:340mm	PROTECTION ANGLE:

Table--2

UNIT: cd

C (DEG) \ γ (DEG)	285	300	315	330	345														
0	539	537	536	535	534														
5	537	536	535	534	533														
10	530	529	528	528	527														
15	518	517	517	516	515														
20	501	501	500	500	499														
25	480	480	480	480	479														
30	454	455	455	455	454														
35	425	426	426	427	426														
40	393	395	395	396	395														
45	358	360	360	361	361														
50	321	323	323	325	324														
55	281	284	284	286	285														
60	240	243	242	245	244														
65	196	200	200	202	201														
70	152	155	156	158	157														
75	108	111	112	114	114														
80	66.0	69.0	70.0	72.2	71.9														
85	30.7	33.3	34.3	36.1	36.0														
90	9.94	11.3	12.4	13.7	13.9														
95	6.44	7.38	7.89	8.25	8.35														
100	6.68	7.41	7.72	8.09	8.38														
105	0.00	0.00	0.00	0.00	0.00														
110	0.00	0.00	0.00	0.00	0.00														
115	0.00	0.00	0.00	0.00	0.00														
120	0.00	0.00	0.00	0.00	0.00														
125	0.00	0.00	0.00	0.00	0.00														
130	0.00	0.00	0.00	0.00	0.00														
135	0.00	0.00	0.00	0.00	0.00														
140	0.00	0.00	0.00	0.00	0.00														
145	0.00	0.00	0.00	0.00	0.00														
150	0.00	0.00	0.00	0.00	0.00														
155	0.00	0.00	0.00	0.00	0.00														
160	0.00	0.00	0.00	0.00	0.00														
165	0.00	0.00	0.00	0.00	0.00														
170	0.00	0.00	0.00	0.00	0.00														
175	0.00	0.00	0.00	0.00	0.00														
180	0.00	0.00	0.00	0.00	0.00														

C Range: 0 - 360DEG
 C Interval: 15.0DEG
 Test Speed: HIGH
 Temperature:25.3DEG
 Operators:
 Test Date:2014-11-21

γ Range: 0 - 180DEG
 γ Interval: 1.0DEG
 Test System:EVERFINE GO-2000B_V1 SYSTEM V2.0.287
 Humidity:65.0%
 Test Distance:8.260m [K=1.0000]
 Remarks: