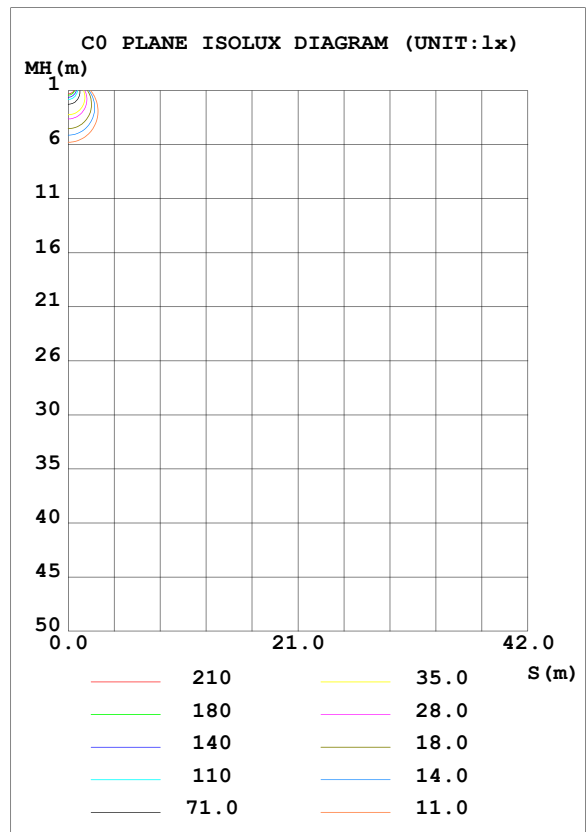
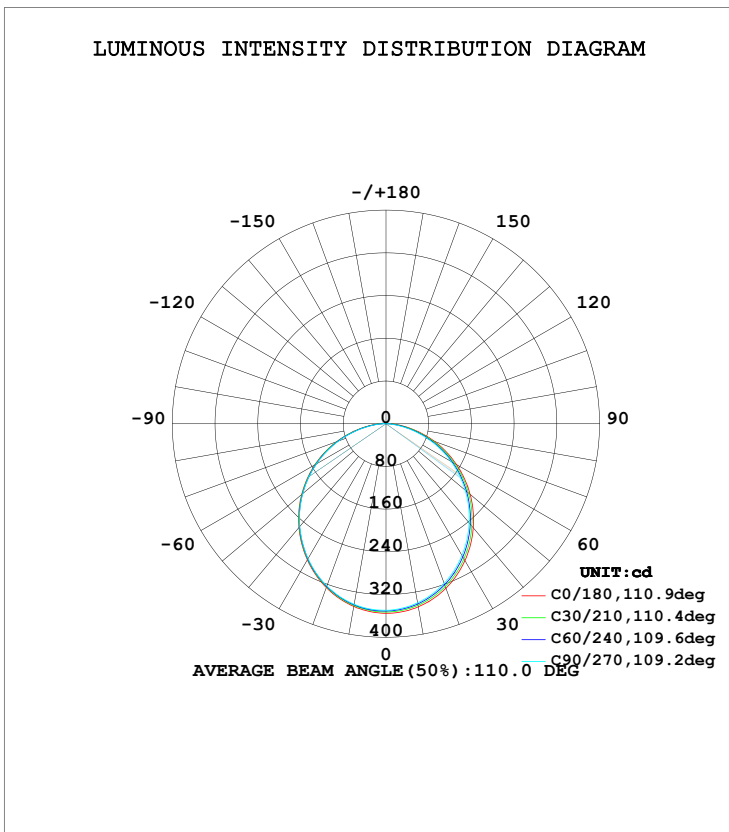


LUMINAIRE PHOTOMETRIC TEST REPORT

Test:U:220.3V I:0.0800A P:13.30W PF:0.7550 Lamp Flux:984.608x1 lm		
NAME: EV14W4K	TYPE: LED	WEIGHT:
SPEC.:	DIM.:	SERIAL No.:
MFR.: EUROTECH LIGHTING	SUR.: 280mm	PROTECTION ANGLE:

DATA OF LAMP		PHOTOMETRIC DATA Eff: 74.03 lm/W			
MODEL	EV14W4K	I _{max} (cd)	354.9	S/MH (C0/180)	1.24
NOMINAL POWER (W)		LOR (%)	100.0	S/MH (C90/270)	1.24
RATED VOLTAGE (V)		TOTAL FLUX (lm)	984.61	η UP, DN (C0-180)	0.2, 48.8
NOMINAL FLUX (lm)	984.608	CIE CLASS	DIRECT	η UP, DN (C180-360)	0.3, 50.7
LAMPS INSIDE	1	η up (%)	0.5	CIBSE SHR NOM	1.25
TEST VOLTAGE (V)		η down (%)	99.5	CIBSE SHR MAX	1.35



C Range: 0 - 360DEG
 C Interval: 15.0DEG
 Test Speed: HIGH
 Temperature: 25.3DEG
 Operators:
 Test Date: 2014-11-21

γ Range: 0 - 180DEG
 γ Interval: 1.0DEG
 Test System: EVERFINE GO-2000B_V1 SYSTEM V2.0.287
 Humidity: 65.0%
 Test Distance: 8.260m [K=1.0000]
 Remarks:

ZONAL FLUX DIAGRAM

ZONAL FLUX DIAGRAM:

γ	C0	C45	C90	C135	C180	C225	C270	C315	γ	Φ zone	Φ total	%lum,lamp
10	348.2	344.0	340.6	339.3	347.4	344.7	343.4	342.6	0- 10	33.09	33.09	3.36,3.36
20	327.9	322.9	318.3	317.3	326.7	324.2	323.5	323.4	10- 20	94.30	127.4	12.9,12.9
30	295.9	290.3	284.7	284.3	294.5	292.3	291.9	292.4	20- 30	141.7	269.1	27.3,27.3
40	254.4	248.9	242.4	243.1	253.7	251.1	251.3	251.9	30- 40	169.2	438.3	44.5,44.5
50	205.7	200.3	193.6	195.3	206.2	203.3	203.5	204.3	40- 50	174.2	612.5	62.2,62.2
60	152.1	146.8	140.4	142.7	153.6	150.6	150.6	151.7	50- 60	156.6	769.1	78.1,78.1
70	96.31	90.59	84.85	87.67	98.25	95.62	94.63	96.73	60- 70	119.5	888.6	90.2,90.2
80	42.40	37.50	31.61	35.43	44.84	42.35	39.98	43.04	70- 80	69.21	957.8	97.3,97.3
90	8.849	5.316	1.761	4.565	10.29	8.587	4.885	7.452	80- 90	21.78	979.6	99.5,99.5
100	4.144	3.449	3.052	4.366	7.405	5.103	4.771	4.895	90-100	4.812	984.4	100,100
110	0	0	0	0	0	0	0	0	100-110	0.2461	984.6	100,100
120	0	0	0	0	0	0	0	0	110-120	0	984.6	100,100
130	0	0	0	0	0	0	0	0	120-130	0	984.6	100,100
140	0	0	0	0	0	0	0	0	130-140	0	984.6	100,100
150	0	0	0	0	0	0	0	0	140-150	0	984.6	100,100
160	0	0	0	0	0	0	0	0	150-160	0	984.6	100,100
170	0	0	0	0	0	0	0	0	160-170	0	984.6	100,100
180	0	0	0	0	0	0	0	0	170-180	0	984.6	100,100
DEG	LUMINOUS INTENSITY:cd									UNIT:lm		

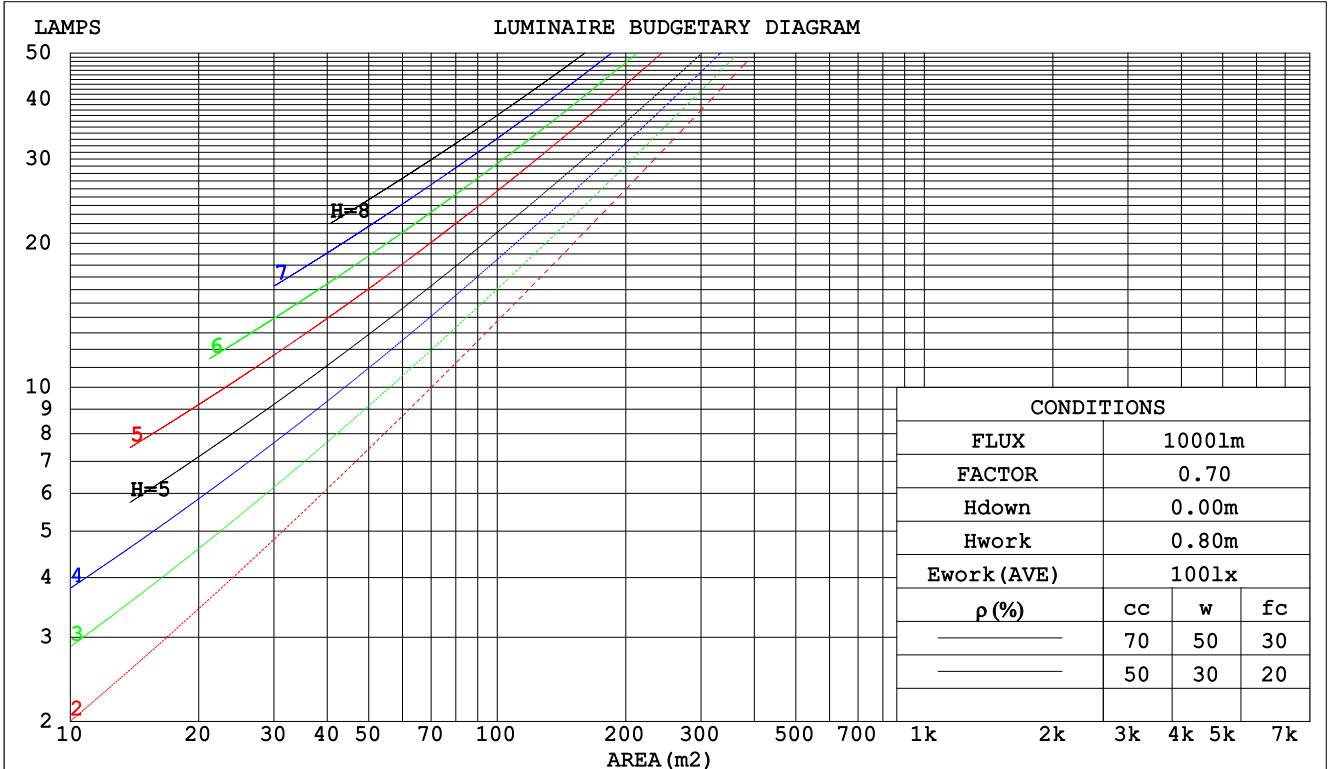
C Range: 0 - 360DEG
 C Interval: 15.0DEG
 Test Speed: HIGH
 Temperature:25.3DEG
 Operators:
 Test Date:2014-11-21

γ Range: 0 - 180DEG
 γ Interval: 1.0DEG
 Test System:EVERFINE GO-2000B_V1 SYSTEM V2.0.287
 Humidity:65.0%
 Test Distance:8.260m [K=1.0000]
 Remarks:

CU AND LUMINAIRE BUDGETARY ESTIMATE DIAGRAM

Test:U:220.3V I:0.0800A P:13.30W PF:0.7550 Lamp Flux:984.608x1 lm		
NAME: 9016-S	TYPE:LED	WEIGHT:
SPEC.:	DIM.:	SERIAL No.:
MFR.:	SUR.:280mm	PROTECTION ANGLE:

pcc	80%			70%			50%			30%			10%			0
pw	50%	30%	10%	50%	30%	10%	50%	30%	10%	50%	30%	10%	50%	30%	10%	0
pfc	20%			20%			20%			20%			20%			0
RCR	RCR:Room Cavity Ratio															
	Coefficients of Utilization(CU)															
0.0	1.19	1.19	1.19	1.16	1.16	1.16	1.11	1.11	1.11	1.06	1.06	1.06	1.02	1.02	1.02	.99
1.0	1.04	.99	.95	1.01	.97	.94	.97	.94	.91	.93	.90	.88	.89	.87	.85	.83
2.0	.90	.83	.78	.88	.82	.77	.85	.79	.75	.81	.77	.73	.78	.74	.71	.69
3.0	.79	.71	.64	.78	.70	.64	.74	.68	.63	.72	.66	.61	.69	.64	.60	.58
4.0	.70	.61	.55	.69	.61	.54	.66	.59	.53	.64	.58	.53	.62	.56	.52	.50
5.0	.63	.54	.47	.61	.53	.47	.59	.52	.46	.57	.51	.46	.55	.50	.45	.43
6.0	.56	.47	.41	.55	.47	.41	.54	.46	.40	.52	.45	.40	.50	.44	.40	.37
7.0	.51	.42	.36	.50	.42	.36	.49	.41	.36	.47	.40	.35	.46	.40	.35	.33
8.0	.47	.38	.32	.46	.38	.32	.45	.37	.32	.43	.37	.32	.42	.36	.31	.30
9.0	.43	.35	.29	.42	.34	.29	.41	.34	.29	.40	.33	.29	.39	.33	.28	.27
10.0	.40	.32	.26	.39	.31	.26	.38	.31	.26	.37	.31	.26	.36	.30	.26	.24



C Range: 0 - 360DEG
 C Interval: 15.0DEG
 Test Speed: HIGH
 Temperature:25.3DEG
 Operators:
 Test Date:2014-11-21

γ Range: 0 - 180DEG
 γ Interval: 1.0DEG
 Test System:EVERFINE GO-2000B_V1 SYSTEM V2.0.287
 Humidity:65.0%
 Test Distance:8.260m [K=1.0000]
 Remarks:

WEC AND CCEC

Test:U:220.3V I:0.0800A P:13.30W PF:0.7550 Lamp Flux:984.608x1 lm									
NAME: 9016-S					TYPE:LED			WEIGHT:	
SPEC.:					DIM.:			SERIAL No.:	
MFR.:					SUR.:280mm			PROTECTION ANGLE:	

ρcc	80%			70%			50%			30%			10%			0
ρw	50%	30%	10%	50%	30%	10%	50%	30%	10%	50%	30%	10%	50%	30%	10%	0
ρfc	20%			20%			20%			20%			20%			0
RCR	RCR:Room Cavity Ratio						Wall Exitance Coefficients(WEC)									
0.0																
1.0	.313	.178	.056	.305	.174	.055	.292	.167	.053	.279	.161	.052	.268	.155	.050	
2.0	.293	.160	.049	.286	.158	.049	.274	.153	.047	.263	.148	.046	.253	.143	.045	
3.0	.270	.144	.043	.265	.142	.043	.254	.138	.042	.244	.134	.041	.235	.130	.040	
4.0	.249	.129	.038	.244	.128	.038	.235	.125	.037	.226	.121	.037	.218	.118	.036	
5.0	.230	.117	.034	.226	.116	.034	.217	.113	.033	.210	.111	.033	.202	.108	.032	
6.0	.213	.107	.031	.209	.106	.030	.202	.104	.030	.195	.101	.030	.189	.099	.029	
7.0	.199	.098	.028	.195	.097	.028	.188	.095	.027	.182	.093	.027	.176	.092	.027	
8.0	.185	.091	.025	.182	.090	.025	.176	.088	.025	.171	.086	.025	.165	.085	.025	
9.0	.174	.084	.023	.171	.083	.023	.166	.082	.023	.160	.080	.023	.156	.079	.023	
10.0	.163	.078	.022	.161	.078	.022	.156	.076	.022	.151	.075	.021	.147	.074	.021	

ρcc	80%			70%			50%			30%			10%			0
ρw	50%	30%	10%	50%	30%	10%	50%	30%	10%	50%	30%	10%	50%	30%	10%	0
ρfc	20%			20%			20%			20%			20%			0
RCR	RCR:Room Cavity Ratio						Ceiling Cavity Exitance Coefficients(CCEC)									
0.0	.194	.194	.194	.166	.166	.166	.113	.113	.113	.065	.065	.065	.021	.021	.021	
1.0	.184	.160	.138	.158	.137	.119	.108	.095	.082	.062	.055	.048	.020	.018	.015	
2.0	.176	.136	.102	.151	.117	.088	.104	.081	.061	.060	.047	.036	.019	.015	.012	
3.0	.169	.118	.078	.144	.102	.068	.099	.071	.048	.057	.041	.028	.018	.013	.009	
4.0	.161	.105	.062	.138	.091	.054	.095	.063	.038	.055	.037	.023	.018	.012	.007	
5.0	.153	.095	.051	.132	.082	.045	.091	.057	.031	.053	.034	.019	.017	.011	.006	
6.0	.146	.086	.043	.126	.075	.038	.087	.052	.027	.050	.031	.016	.016	.010	.005	
7.0	.139	.079	.037	.120	.069	.032	.083	.048	.023	.048	.028	.014	.016	.009	.005	
8.0	.133	.074	.033	.114	.064	.029	.079	.045	.020	.046	.026	.012	.015	.009	.004	
9.0	.127	.069	.029	.109	.060	.026	.076	.042	.018	.044	.025	.011	.014	.008	.004	
10.0	.121	.064	.027	.104	.056	.023	.072	.039	.016	.042	.023	.010	.014	.008	.003	

C Range: 0 - 360DEG
 C Interval: 15.0DEG
 Test Speed: HIGH
 Temperature:25.3DEG
 Operators:
 Test Date:2014-11-21

γ Range: 0 - 180DEG
 γ Interval: 1.0DEG
 Test System:EVERFINE GO-2000B_V1 SYSTEM V2.0.287
 Humidity:65.0%
 Test Distance:8.260m [K=1.0000]
 Remarks:

UGR(Unified Glare Rating) Table

Test:U:220.3V I:0.0800A P:13.30W PF:0.7550 Lamp Flux:984.608x1 lm										
NAME: 9016-S					TYPE:LED			WEIGHT:		
SPEC.:					DIM.:			SERIAL No.:		
MFR.:					SUR.:280mm			PROTECTION ANGLE:		
ceiling/cavity	0.7	0.7	0.5	0.5	0.3	0.7	0.7	0.5	0.5	0.3
walls	0.5	0.3	0.5	0.3	0.3	0.5	0.3	0.5	0.3	0.3
working plane	0.2	0.2	0.2	0.2	0.2	0.2	0.2	0.2	0.2	0.2
Room dimensions	Viewed crosswise					Viewed endwise				
x = 2H y = 2H	24.8	26.3	25.1	26.5	26.7	24.5	26.0	24.7	26.2	26.4
3H	26.3	27.7	26.7	28.0	28.2	25.9	27.3	26.2	27.5	27.8
4H	27.0	28.3	27.3	28.6	28.8	26.4	27.8	26.7	28.0	28.3
6H	27.4	28.7	27.8	29.0	29.3	26.8	28.0	27.1	28.3	28.6
8H	27.6	28.8	28.0	29.1	29.4	26.8	28.0	27.2	28.3	28.6
12H	27.7	28.9	28.1	29.2	29.5	26.9	28.0	27.2	28.3	28.6
4H 2H	25.3	26.7	25.7	26.9	27.2	25.1	26.4	25.4	26.7	27.0
3H	27.1	28.3	27.4	28.6	28.9	26.7	27.9	27.1	28.2	28.5
4H	27.8	28.9	28.2	29.2	29.6	27.3	28.4	27.7	28.7	29.1
6H	28.5	29.4	28.9	29.8	30.1	27.8	28.7	28.2	29.1	29.5
8H	28.7	29.6	29.1	29.9	30.3	27.9	28.8	28.3	29.2	29.6
12H	28.9	29.7	29.3	30.1	30.5	28.0	28.8	28.4	29.2	29.6
8H 4H	28.1	29.0	28.5	29.3	29.7	27.6	28.5	28.0	28.9	29.3
6H	28.8	29.6	29.3	30.0	30.4	28.2	28.9	28.7	29.4	29.8
8H	29.1	29.8	29.6	30.2	30.7	28.4	29.1	28.9	29.5	30.0
12H	29.4	30.0	29.9	30.4	30.9	28.5	29.1	29.0	29.5	30.0
12H 4H	28.1	28.9	28.5	29.3	29.7	27.6	28.5	28.1	28.9	29.3
6H	28.9	29.5	29.3	30.0	30.4	28.3	28.9	28.7	29.4	29.8
8H	29.2	29.8	29.7	30.2	30.7	28.5	29.1	29.0	29.5	30.0
Variations with the observer position at spacings:										
S = 1.0H	+ 0.2 / - 0.2					+ 0.2 / - 0.2				
1.5H	+ 0.2 / - 0.3					+ 0.2 / - 0.3				
2.0H	+ 0.2 / - 0.3					+ 0.2 / - 0.3				

CIE Pub.117 Corrected 984.6 lm Total Lamp Luminous Flux. (8log(F/F0) = -0.1)

C Range: 0 - 360DEG
 C Interval: 15.0DEG
 Test Speed: HIGH
 Temperature:25.3DEG
 Operators:
 Test Date:2014-11-21

γ Range: 0 - 180DEG
 γ Interval: 1.0DEG
 Test System:EVERFINE GO-2000B_V1 SYSTEM V2.0.287
 Humidity:65.0%
 Test Distance:8.260m [K=1.0000]
 Remarks:

UTILIZATION FACTORS TABLE

Test:U:220.3V I:0.0800A P:13.30W PF:0.7550 Lamp Flux:984.608x1 lm		
NAME: 9016-S	TYPE:LED	WEIGHT:
SPEC.:	DIM.:	SERIAL No.:
MFR.:	SUR.:280mm	PROTECTION ANGLE:

REFLECTANCE										
Ceiling	0.8	0.8	0.8	0.7	0.7	0.7	0.5	0.5	0.5	0
Walls	0.7	0.5	0.3	0.7	0.5	0.3	0.7	0.5	0.3	0
Working plane	0.2	0.2	0.2	0.2	0.2	0.2	0.2	0.2	0.2	0
ROOM INDEX	UTILIZATION FACTORS (PERCENT) $k(RI) \times RCR = 5$									
k = 0.60	57	46	39	57	46	39	56	45	39	32
0.80	67	56	48	66	55	48	65	55	48	41
1.00	76	65	57	75	64	57	72	65	56	49
1.25	83	72	65	81	72	65	79	70	64	57
1.50	88	78	71	86	77	70	83	75	69	62
2.00	95	86	79	93	85	79	89	83	77	69
2.50	99	91	85	96	89	84	93	87	82	73
3.00	102	95	89	100	93	88	96	90	86	77
4.00	106	100	95	104	98	94	99	95	91	82
5.00	108	103	99	106	101	98	101	98	95	85
ROOM INDEX	UF(total)									Direct
According to DIN EN 13032-2 2004			Suspended				SHRNOM = 1.25			

C Range: 0 - 360DEG
 C Interval: 15.0DEG
 Test Speed: HIGH
 Temperature:25.3DEG
 Operators:
 Test Date:2014-11-21

γ Range: 0 - 180DEG
 γ Interval: 1.0DEG
 Test System:EVERFINE GO-2000B_V1 SYSTEM V2.0.287
 Humidity:65.0%
 Test Distance:8.260m [K=1.0000]
 Remarks:

ISOCANDELA DIAGRAM

Test:U:220.3V I:0.0800A P:13.30W PF:0.7550 Lamp Flux:984.608x1 lm		
NAME: 9016-S	TYPE:LED	WEIGHT:
SPEC.:	DIM.:	SERIAL No.:
MFR.:	SUR.:280mm	PROTECTION ANGLE:

Conical surface Flux(90deg):

526.26 lm

%lum = 53.4%

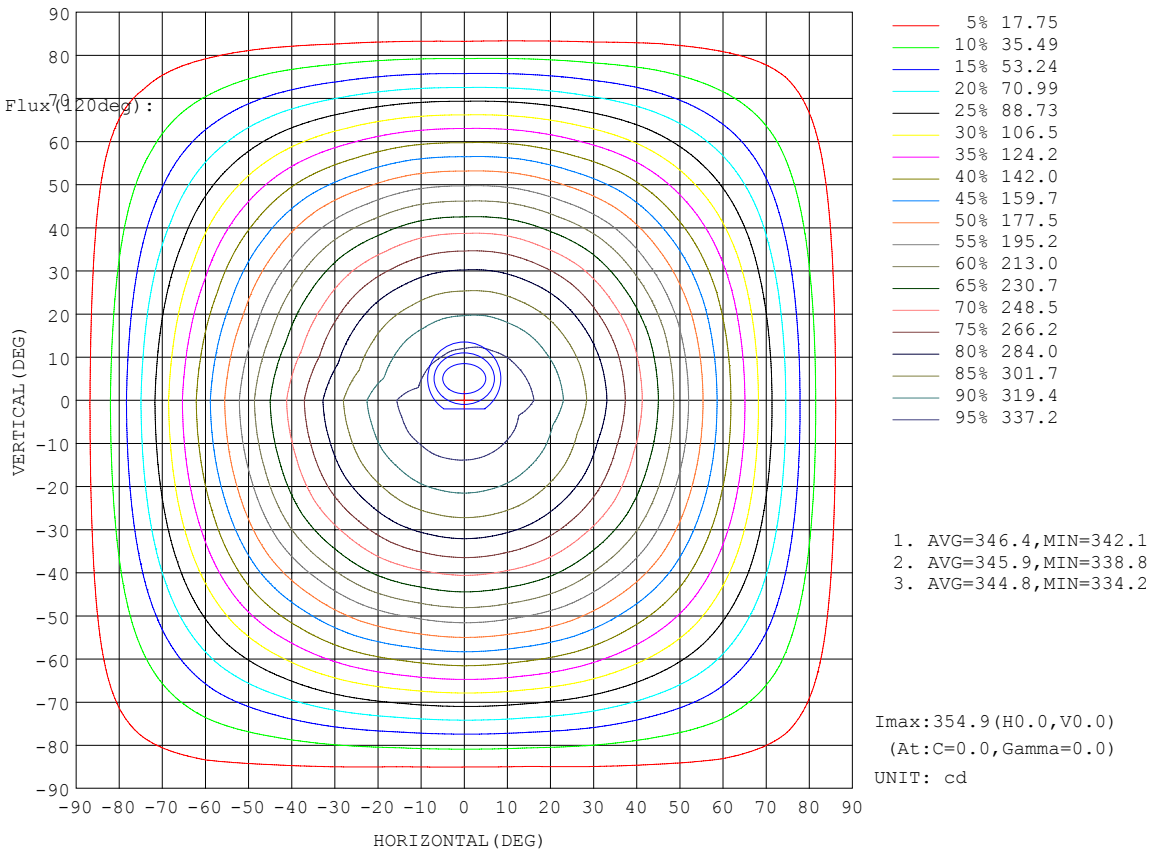
%lamp = 53.4%

Conical surface Flux(70deg):

769.06 lm

%lum = 78.1%

%lamp = 78.1%

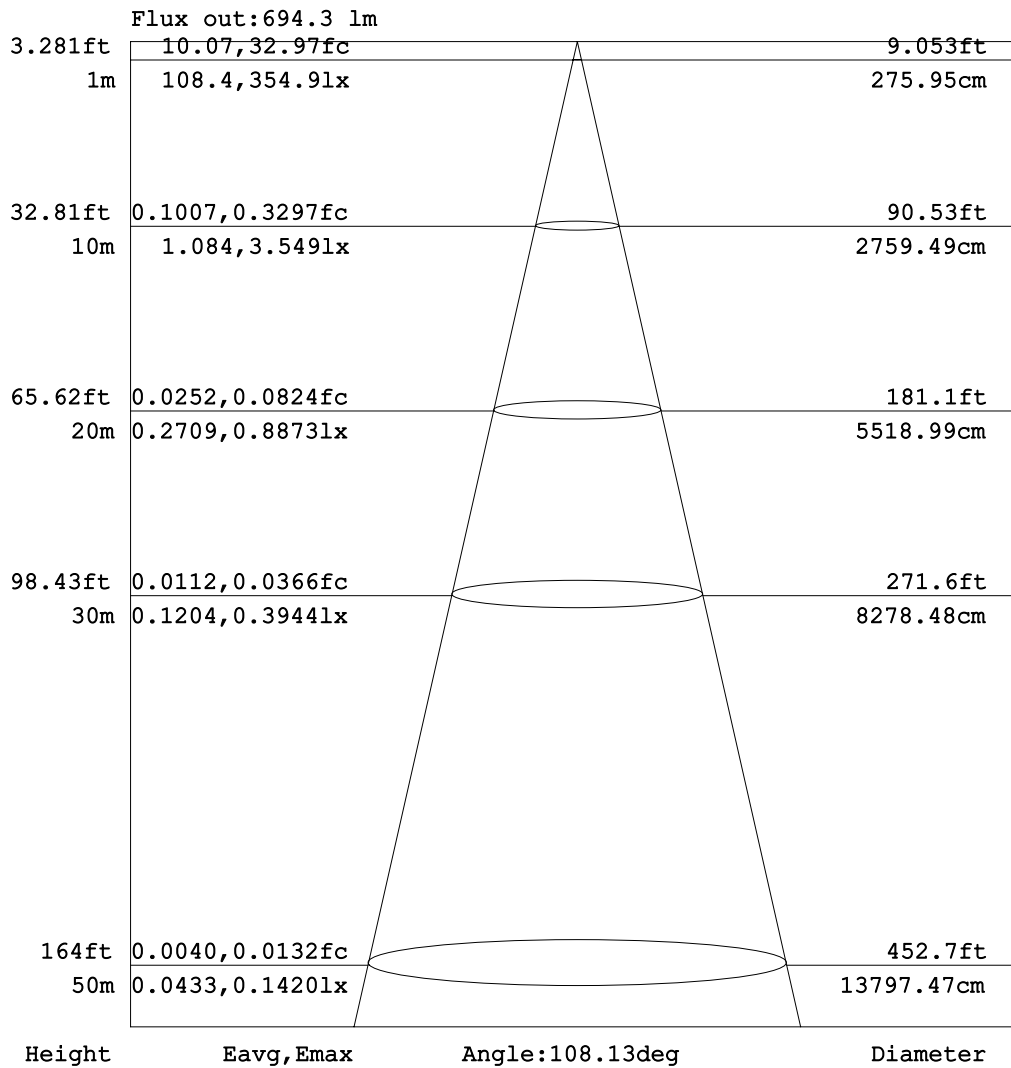


C Range: 0 - 360DEG
C Interval: 15.0DEG
Test Speed: HIGH
Temperature:25.3DEG
Operators:
Test Date:2014-11-21

γ Range: 0 - 180DEG
γ Interval: 1.0DEG
Test System:EVERFINE GO-2000B_V1 SYSTEM V2.0.287
Humidity:65.0%
Test Distance:8.260m [K=1.0000]
Remarks:

AAI Figure

Test:U:220.3V I:0.0800A P:13.30W PF:0.7550 Lamp Flux:984.608x1 lm		
NAME: 9016-S	TYPE:LED	WEIGHT:
SPEC.:	DIM.:	SERIAL No.:
MFR.:	SUR.:280mm	PROTECTION ANGLE:



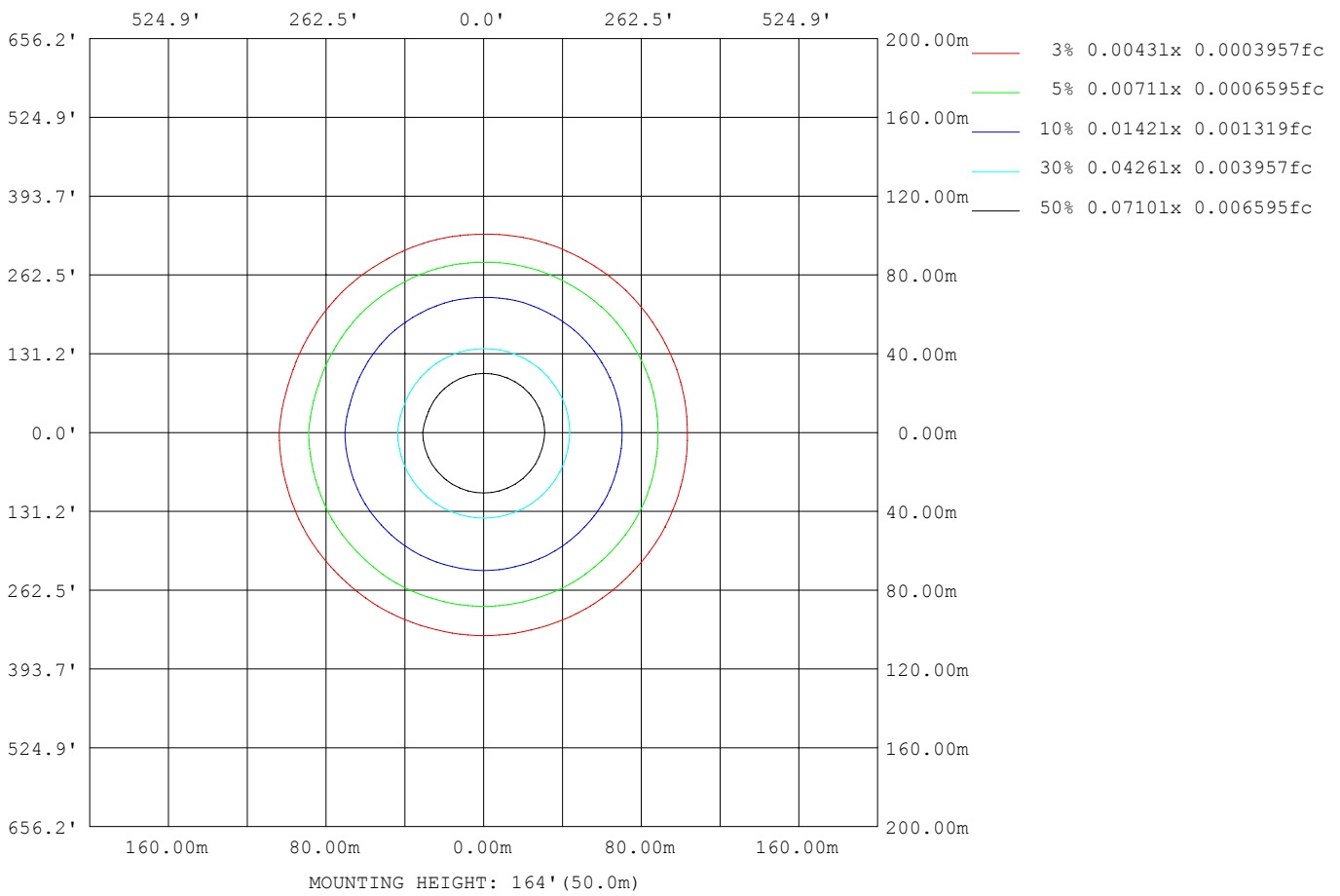
Note:The Curves indicate the illuminated area and the average illumination when the luminaire is at different distance.

C Range: 0 - 360DEG
 C Interval: 15.0DEG
 Test Speed: HIGH
 Temperature:25.3DEG
 Operators:
 Test Date:2014-11-21

γ Range: 0 - 180DEG
 γ Interval: 1.0DEG
 Test System:EVERFINE GO-2000B_V1 SYSTEM V2.0.287
 Humidity:65.0%
 Test Distance:8.260m [K=1.0000]
 Remarks:

ISOLUX DIAGRAM

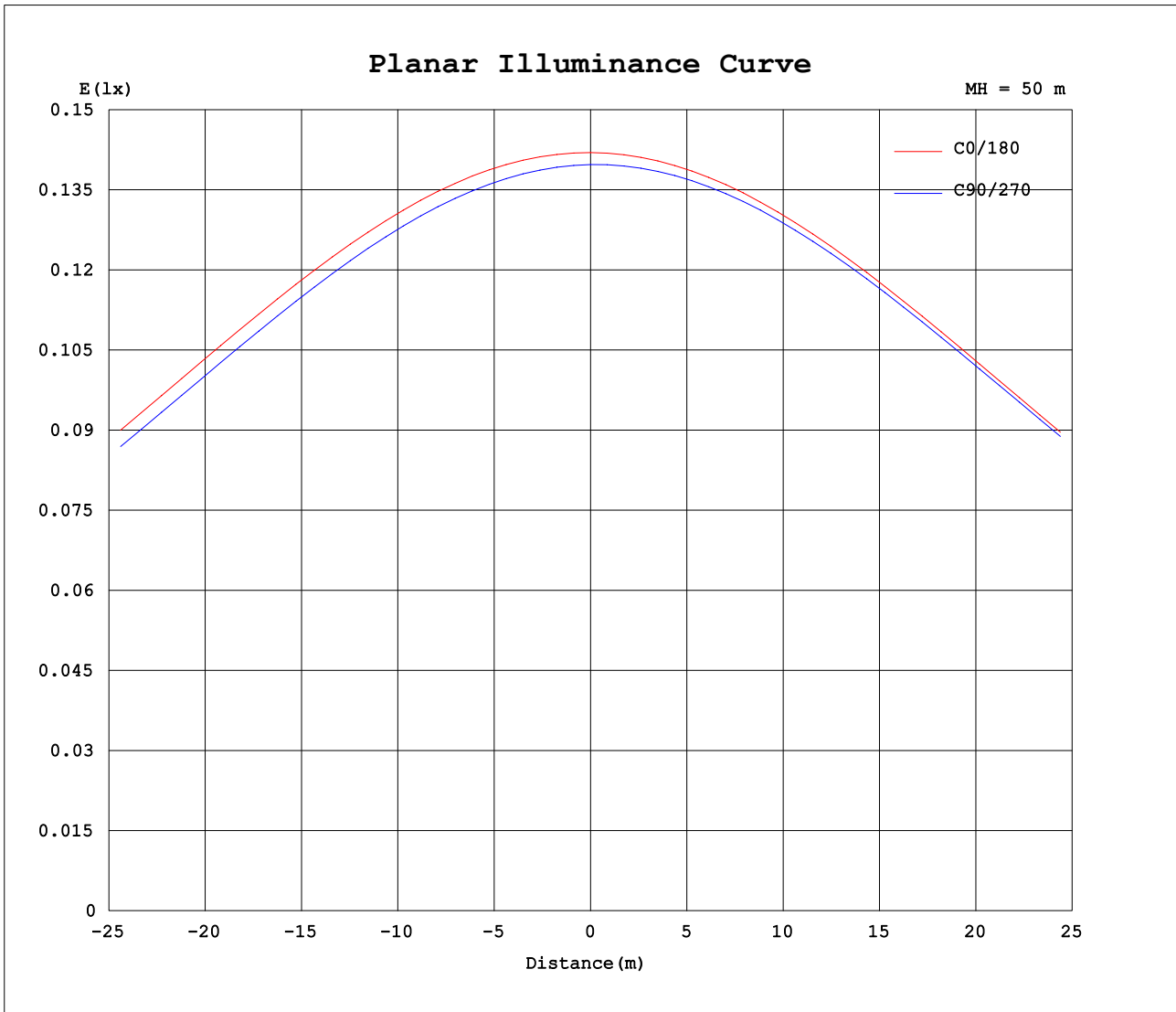
Test:U:220.3V I:0.0800A P:13.30W PF:0.7550 Lamp Flux:984.608x1 lm		
NAME: 9016-S	TYPE:LED	WEIGHT:
SPEC.:	DIM.:	SERIAL No.:
MFR.:	SUR.:280mm	PROTECTION ANGLE:



C Range: 0 - 360DEG
 C Interval: 15.0DEG
 Test Speed: HIGH
 Temperature:25.3DEG
 Operators:
 Test Date:2014-11-21

γ Range: 0 - 180DEG
 γ Interval: 1.0DEG
 Test System:EVERFINE GO-2000B_V1 SYSTEM V2.0.287
 Humidity:65.0%
 Test Distance:8.260m [K=1.0000]
 Remarks:

Planar Illuminance Curve



C Range: 0 - 360DEG
 C Interval: 15.0DEG
 Test Speed: HIGH
 Temperature: 25.3DEG
 Operators:
 Test Date: 2014-11-21

γ Range: 0 - 180DEG
 γ Interval: 1.0DEG
 Test System: EVERFINE GO-2000B_V1 SYSTEM V2.0.287
 Humidity: 65.0%
 Test Distance: 8.260m [K=1.0000]
 Remarks:

LUMINOUS DISTRIBUTION INTENSITY DATA

Test:U:220.3V I:0.0800A P:13.30W PF:0.7550 Lamp Flux:984.608x1 lm		
NAME: 9016-S	TYPE:LED	WEIGHT:
SPEC.:	DIM.:	SERIAL No.:
MFR.:	SUR.:280mm	PROTECTION ANGLE:

Table--1

UNIT: cd

C (DEG) \ γ (DEG)	0	15	30	45	60	75	90	105	120	135	150	165	180	195	210	225	240	255	270
0	355	353	353	352	351	350	349	349	348	348	348	347	355	353	353	352	351	350	349
5	353	352	351	350	349	348	347	346	346	345	345	345	353	352	351	350	349	349	348
10	348	347	345	344	343	342	341	340	339	339	339	339	347	346	346	345	344	344	343
15	340	338	336	335	333	332	331	331	330	330	329	330	339	337	337	336	336	335	335
20	328	326	324	323	321	320	318	318	317	317	317	318	327	325	325	324	324	324	324
25	313	312	310	308	306	305	303	303	302	302	302	303	312	311	311	310	310	309	309
30	296	294	292	290	288	287	285	285	284	284	284	285	294	293	293	292	292	292	292
35	276	275	272	270	268	266	264	264	264	264	265	266	275	274	274	273	273	272	272
40	254	253	250	249	246	245	242	243	242	243	243	245	254	252	253	251	252	250	251
45	231	230	227	225	222	221	219	219	218	220	220	222	231	229	230	228	229	227	228
50	206	205	202	200	197	196	194	194	193	195	195	197	206	205	205	203	204	202	203
55	179	179	175	174	171	170	168	168	167	169	170	172	180	179	179	178	178	177	178
60	152	152	148	147	143	143	140	141	141	143	143	146	154	152	153	151	151	150	151
65	125	124	121	119	116	115	113	113	113	115	116	118	126	125	125	124	123	122	123
70	96.3	95.4	92.6	90.6	87.7	86.4	84.8	85.5	85.7	87.7	88.8	91.0	98.2	97.4	97.4	95.6	95.4	94.0	94.6
75	68.5	67.7	65.0	63.1	60.1	58.8	57.2	58.0	58.4	60.6	61.9	64.1	70.7	69.9	69.9	68.1	67.6	66.2	66.6
80	42.4	41.8	39.4	37.5	34.5	33.0	31.6	32.4	33.1	35.4	36.8	39.1	44.8	44.3	44.1	42.3	41.5	39.9	40.0
85	21.2	20.9	19.0	17.2	14.3	12.6	11.3	11.9	12.6	14.6	16.2	18.5	23.6	23.5	23.1	21.4	20.0	18.3	18.0
90	8.85	8.38	6.92	5.32	3.30	2.06	1.76	2.04	3.02	4.56	5.77	6.86	10.3	10.5	10.2	8.59	6.93	5.33	4.89
95	4.07	3.73	3.31	2.72	2.03	1.99	2.04	2.04	2.48	3.23	3.73	4.20	6.62	6.37	6.01	5.15	4.24	3.92	3.89
100	4.14	4.07	3.76	3.45	3.19	3.08	3.05	2.94	3.73	4.37	4.77	5.15	7.41	6.77	6.08	5.10	4.33	4.49	4.77
105	0.00	0.00	0.00	0.00	0.00	0.00	0.00	0.00	0.00	0.00	0.00	0.00	0.00	0.00	0.00	0.00	0.00	0.00	0.00
110	0.00	0.00	0.00	0.00	0.00	0.00	0.00	0.00	0.00	0.00	0.00	0.00	0.00	0.00	0.00	0.00	0.00	0.00	0.00
115	0.00	0.00	0.00	0.00	0.00	0.00	0.00	0.00	0.00	0.00	0.00	0.00	0.00	0.00	0.00	0.00	0.00	0.00	0.00
120	0.00	0.00	0.00	0.00	0.00	0.00	0.00	0.00	0.00	0.00	0.00	0.00	0.00	0.00	0.00	0.00	0.00	0.00	0.00
125	0.00	0.00	0.00	0.00	0.00	0.00	0.00	0.00	0.00	0.00	0.00	0.00	0.00	0.00	0.00	0.00	0.00	0.00	0.00
130	0.00	0.00	0.00	0.00	0.00	0.00	0.00	0.00	0.00	0.00	0.00	0.00	0.00	0.00	0.00	0.00	0.00	0.00	0.00
135	0.00	0.00	0.00	0.00	0.00	0.00	0.00	0.00	0.00	0.00	0.00	0.00	0.00	0.00	0.00	0.00	0.00	0.00	0.00
140	0.00	0.00	0.00	0.00	0.00	0.00	0.00	0.00	0.00	0.00	0.00	0.00	0.00	0.00	0.00	0.00	0.00	0.00	0.00
145	0.00	0.00	0.00	0.00	0.00	0.00	0.00	0.00	0.00	0.00	0.00	0.00	0.00	0.00	0.00	0.00	0.00	0.00	0.00
150	0.00	0.00	0.00	0.00	0.00	0.00	0.00	0.00	0.00	0.00	0.00	0.00	0.00	0.00	0.00	0.00	0.00	0.00	0.00
155	0.00	0.00	0.00	0.00	0.00	0.00	0.00	0.00	0.00	0.00	0.00	0.00	0.00	0.00	0.00	0.00	0.00	0.00	0.00
160	0.00	0.00	0.00	0.00	0.00	0.00	0.00	0.00	0.00	0.00	0.00	0.00	0.00	0.00	0.00	0.00	0.00	0.00	0.00
165	0.00	0.00	0.00	0.00	0.00	0.00	0.00	0.00	0.00	0.00	0.00	0.00	0.00	0.00	0.00	0.00	0.00	0.00	0.00
170	0.00	0.00	0.00	0.00	0.00	0.00	0.00	0.00	0.00	0.00	0.00	0.00	0.00	0.00	0.00	0.00	0.00	0.00	0.00
175	0.00	0.00	0.00	0.00	0.00	0.00	0.00	0.00	0.00	0.00	0.00	0.00	0.00	0.00	0.00	0.00	0.00	0.00	0.00
180	0.00	0.00	0.00	0.00	0.00	0.00	0.00	0.00	0.00	0.00	0.00	0.00	0.00	0.00	0.00	0.00	0.00	0.00	0.00

C Range: 0 - 360DEG
 C Interval: 15.0DEG
 Test Speed: HIGH
 Temperature:25.3DEG
 Operators:
 Test Date:2014-11-21

γ Range: 0 - 180DEG
 γ Interval: 1.0DEG
 Test System:EVERFINE GO-2000B_V1 SYSTEM V2.0.287
 Humidity:65.0%
 Test Distance:8.260m [K=1.0000]
 Remarks:

LUMINOUS DISTRIBUTION INTENSITY DATA

Test:U:220.3V I:0.0800A P:13.30W PF:0.7550 Lamp Flux:984.608x1 lm		
NAME: 9016-S	TYPE:LED	WEIGHT:
SPEC.:	DIM.:	SERIAL No.:
MFR.:	SUR.:280mm	PROTECTION ANGLE:

Table--2

UNIT: cd

C (DEG) \ γ (DEG)	285	300	315	330	345														
0	349	348	348	348	347														
5	348	347	347	347	346														
10	343	343	343	342	342														
15	335	335	335	335	334														
20	323	324	323	324	323														
25	309	309	309	310	309														
30	292	292	292	293	292														
35	272	273	273	274	273														
40	251	252	252	253	252														
45	228	229	229	230	229														
50	203	205	204	206	205														
55	177	179	179	180	180														
60	150	152	152	154	153														
65	123	124	125	126	126														
70	94.5	96.2	96.7	98.4	98.3														
75	66.6	68.4	69.1	70.9	70.9														
80	40.1	41.9	43.0	44.9	45.1														
85	18.1	19.9	21.3	23.0	23.2														
90	5.41	6.35	7.45	8.91	9.12														
95	3.87	3.94	4.35	4.70	4.81														
100	4.71	4.73	4.89	5.15	5.42														
105	0.00	0.00	0.00	0.00	0.00														
110	0.00	0.00	0.00	0.00	0.00														
115	0.00	0.00	0.00	0.00	0.00														
120	0.00	0.00	0.00	0.00	0.00														
125	0.00	0.00	0.00	0.00	0.00														
130	0.00	0.00	0.00	0.00	0.00														
135	0.00	0.00	0.00	0.00	0.00														
140	0.00	0.00	0.00	0.00	0.00														
145	0.00	0.00	0.00	0.00	0.00														
150	0.00	0.00	0.00	0.00	0.00														
155	0.00	0.00	0.00	0.00	0.00														
160	0.00	0.00	0.00	0.00	0.00														
165	0.00	0.00	0.00	0.00	0.00														
170	0.00	0.00	0.00	0.00	0.00														
175	0.00	0.00	0.00	0.00	0.00														
180	0.00	0.00	0.00	0.00	0.00														

C Range: 0 - 360DEG
 C Interval: 15.0DEG
 Test Speed: HIGH
 Temperature:25.3DEG
 Operators:
 Test Date:2014-11-21

γ Range: 0 - 180DEG
 γ Interval: 1.0DEG
 Test System:EVERFINE GO-2000B_V1 SYSTEM V2.0.287
 Humidity:65.0%
 Test Distance:8.260m [K=1.0000]
 Remarks: