

Light efficiency:

171 Lumen/Watt

Light quality:

CRI: 70.4

Color temperature:

6122 K

Output: 19491 lm

Peak: 9254 cd

Power: 114 W

PF: 0.94

8 PLANES



Product name:

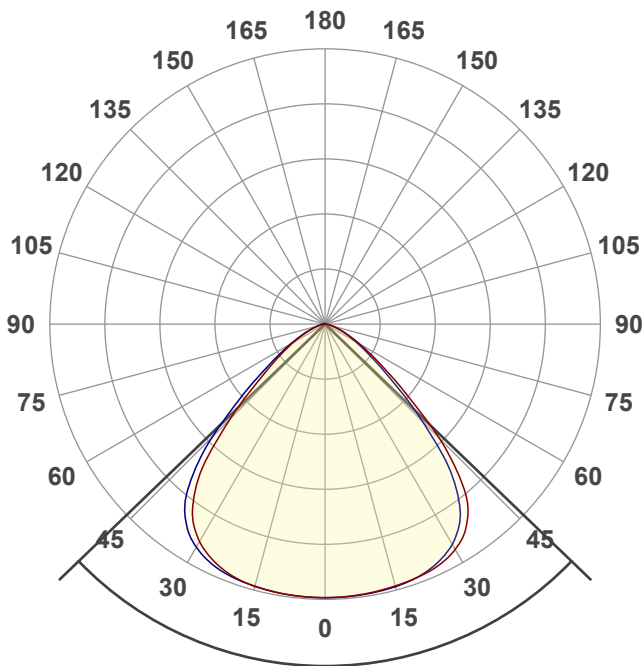
PLUTOHB_120_6000K

Date and time:

6/05/2024 1:35:19 pm

Operator:

HG



Beam angle

92.2°

Color

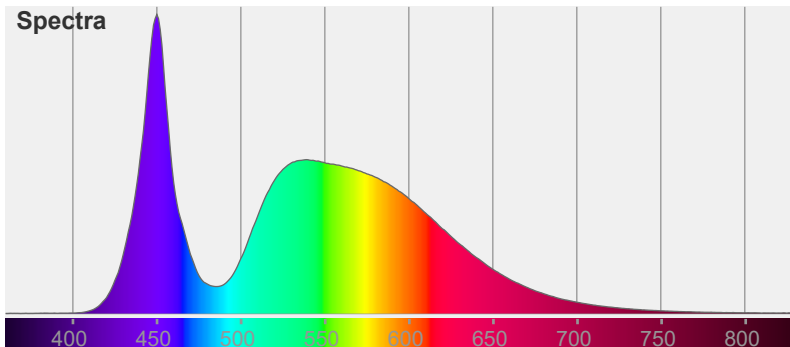


CIE1931

x: 0.319

y: 0.346

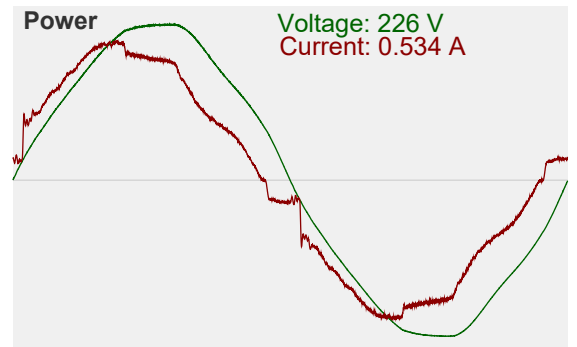
Spectra

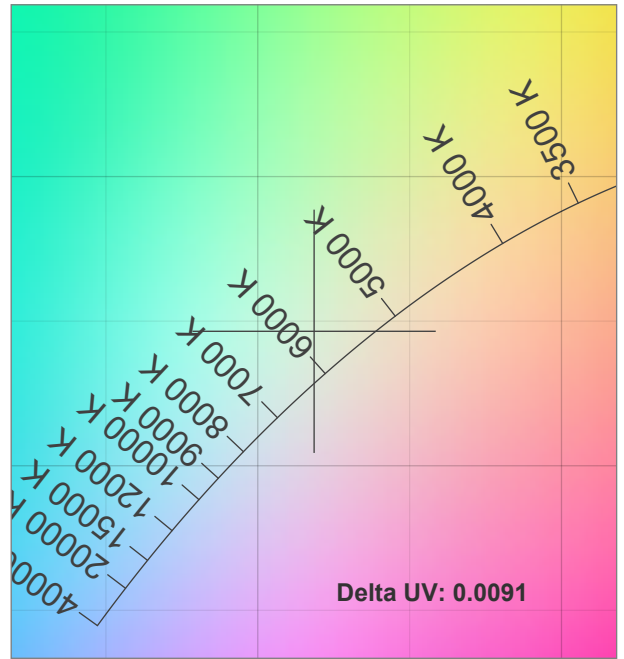
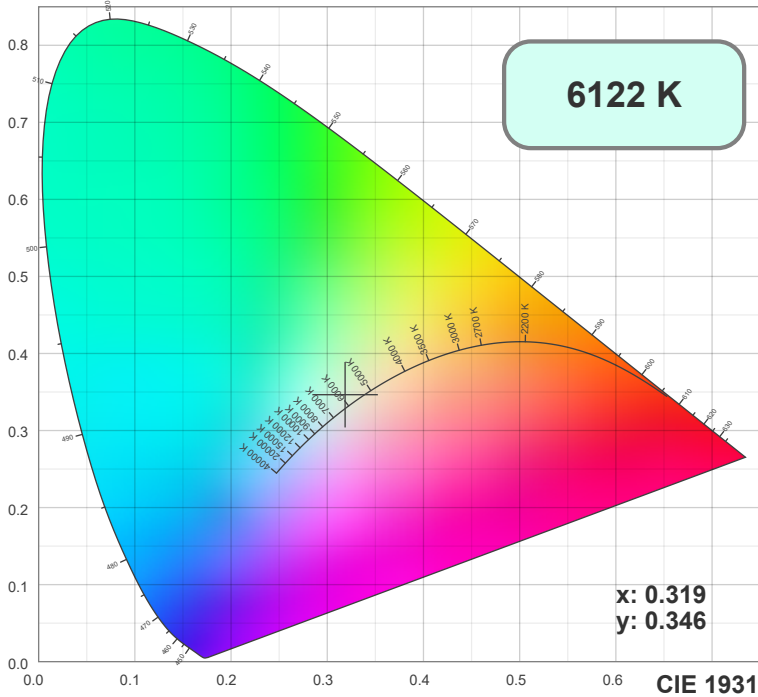


Power

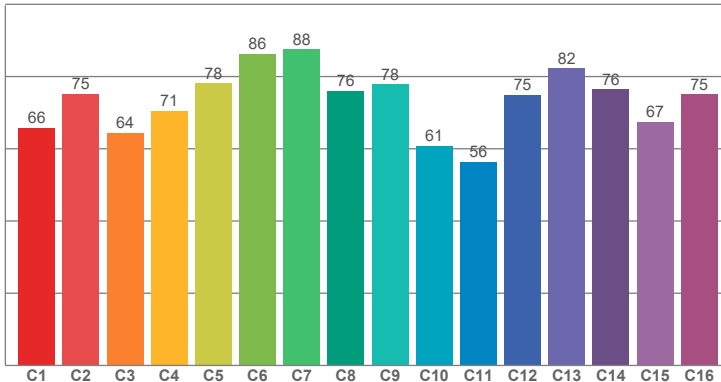
Voltage: 226 V

Current: 0.534 A

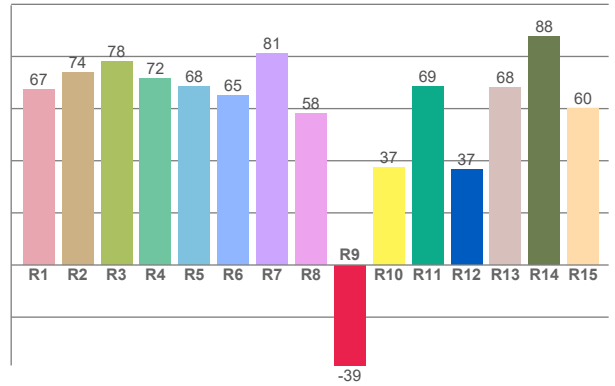




TM30: 73.0



CRI: 70.4 (R1-R8)



CRI R values, only R1-R8 are used to calculate final CRI value

R1	R2	R3	R4	R5	R6	R7	R8	R9	R10	R11	R12	R13	R14	R15
67.25	73.73	78.05	71.67	68.33	65.15	81.16	58.06	-38.53	37.48	68.61	36.63	68.06	87.73	59.97

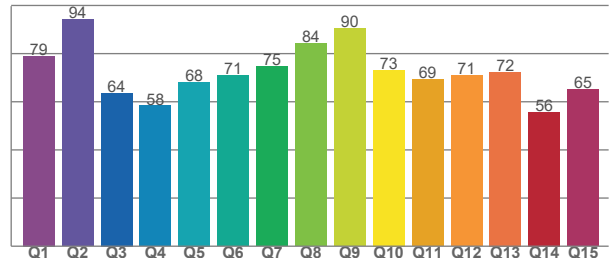
TM30 C values, 16 binned values out of total of 99 C values

C1	C2	C3	C4	C5	C6	C7	C8	C9	C10	C11	C12	C13	C14	C15	C16
65.76	75.18	64.42	70.55	78.19	86.26	87.52	76.09	77.90	60.83	56.44	74.91	82.33	76.42	67.41	75.03

CQS Q values

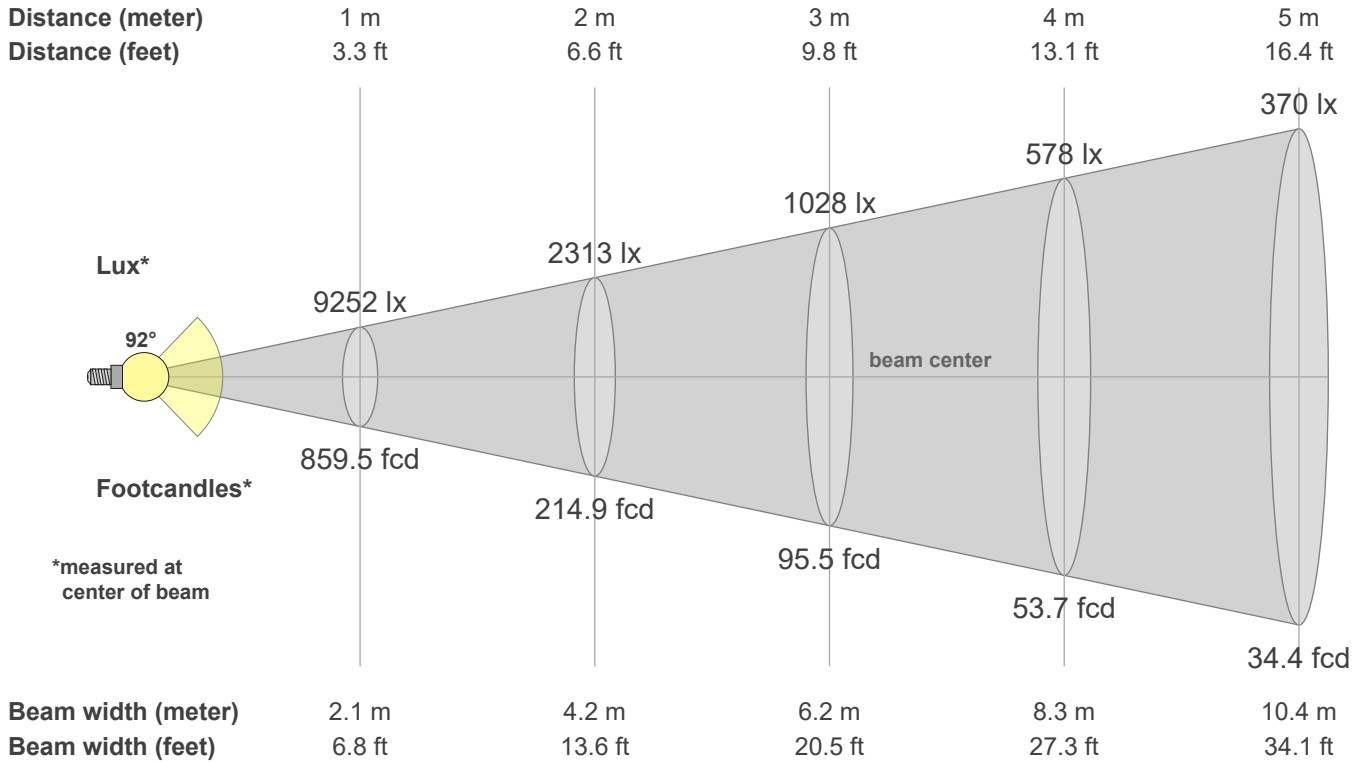
Q1	Q2	Q3	Q4	Q5	Q6	Q7	Q8	Q9	Q10	Q11	Q12	Q13	Q14	Q15
79.08	94.14	63.59	58.35	68.18	70.84	74.73	84.30	90.48	73.26	69.24	70.85	72.42	55.80	65.00

CQS: 70.8



Color parameters

CCT	CRI	CRI R9	TM30 Rf	TM30 Rg	CQS	x	y	u	v	Duv
6122 K	70.4	-38.5	73.0	92.8	70.8	0.3	0.3	0.2	0.3	0.0059



Intensities in 0° c-plane

0°	5°	10°	15°	20°	25°	30°	35°	40°	45°	50°	55°	60°	65°	70°	75°	80°	85°	90°	95°
9252	9241	9211	9169	9115	9019	8788	8307	7305	5474	3418	2138	1366	853	512	288	150	50	10	0
100%	100%	100%	99%	99%	97%	95%	90%	79%	59%	37%	23%	15%	9%	6%	3%	2%	1%	0%	0%

Intensities in 90° c-plane

0°	5°	10°	15°	20°	25°	30°	35°	40°	45°	50°	55°	60°	65°	70°	75°	80°	85°	90°	95°
9252	9248	9228	9191	9106	8921	8578	7916	6624	4694	2980	1887	1215	770	454	251	127	25	4	0
100%	100%	100%	99%	98%	96%	93%	86%	72%	51%	32%	20%	13%	8%	5%	3%	1%	0%	0%	0%

Intensities in 180° c-plane

0°	5°	10°	15°	20°	25°	30°	35°	40°	45°	50°	55°	60°	65°	70°	75°	80°	85°	90°	95°
9252	9247	9225	9183	9078	8858	8480	7798	6524	4567	2890	1905	1251	783	455	247	123	27	3	0
100%	100%	100%	99%	98%	96%	92%	84%	71%	49%	31%	21%	14%	8%	5%	3%	1%	0%	0%	0%

Intensities in 270° c-plane

0°	5°	10°	15°	20°	25°	30°	35°	40°	45°	50°	55°	60°	65°	70°	75°	80°	85°	90°	95°
9252	9243	9219	9174	9110	8971	8688	8157	7129	5400	3477	2159	1369	852	508	287	149	52	9	0
100%	100%	100%	99%	98%	97%	94%	88%	77%	58%	38%	23%	15%	9%	5%	3%	2%	1%	0%	0%

Beam angle 50%	Field angle 10%	Cutoff angle 2.5%	Intensity ratio in 120° cone	Intensity ratio in 90° cone
92.2°	127.1°	152.2°	94.0%	75.9%