

Light efficiency:

**171 Lumen/Watt**

Light quality:

**CRI: 72.3**

Color temperature:

**3966 K**

**Output: 19478 lm**

**Peak: 9268 cd**

**Power: 114 W**

**PF: 0.94**

8 PLANES



Product name:

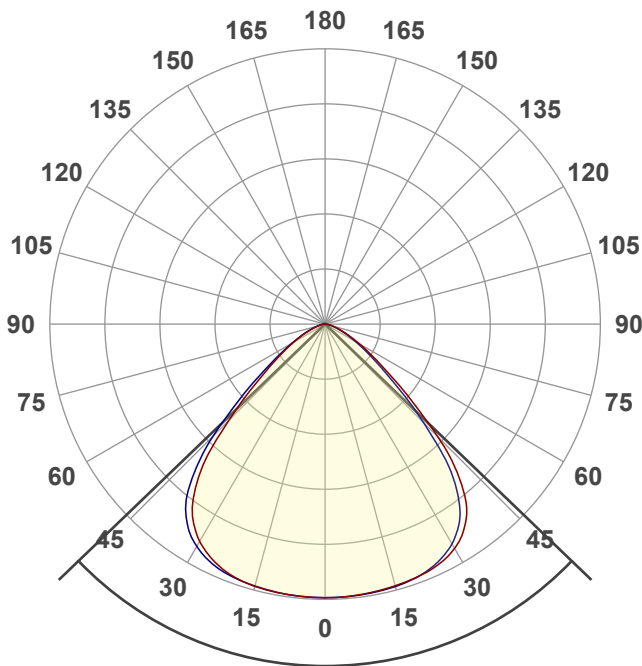
**PLUTOHB\_120\_4000K**

Date and time:

**6/05/2024 1:03:29 pm**

Operator:

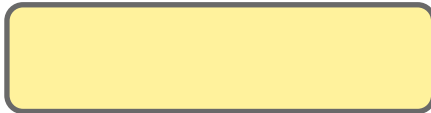
**HG**



Beam angle

**92.3°**

Color

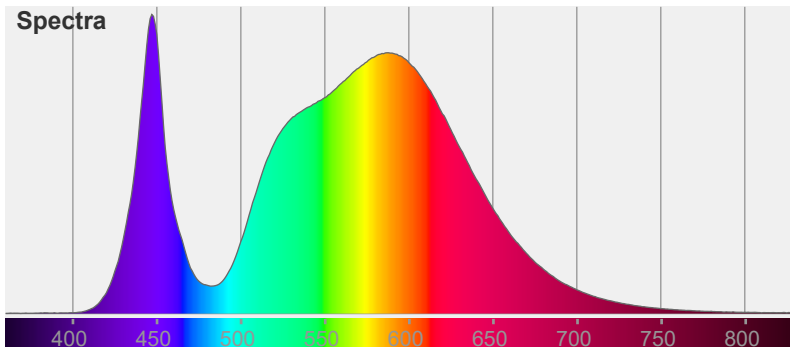


CIE1931

x: 0.384

y: 0.385

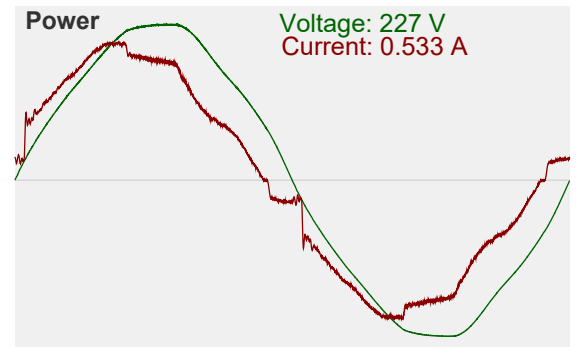
Spectra

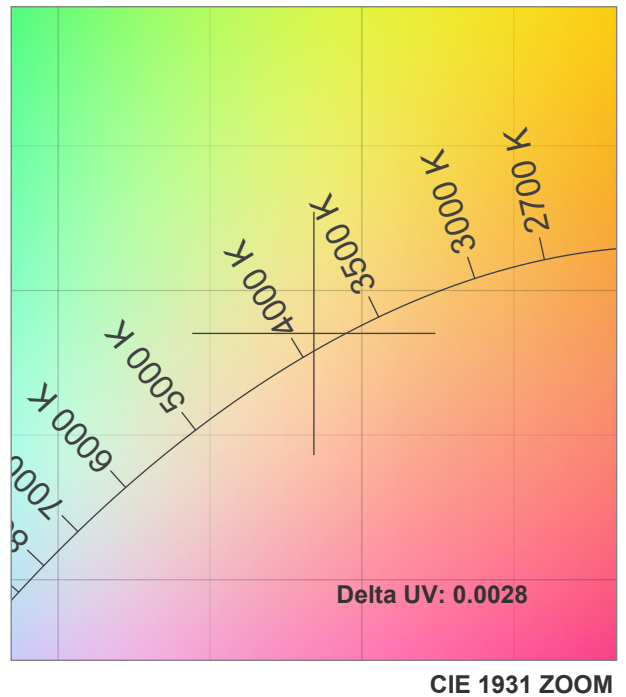
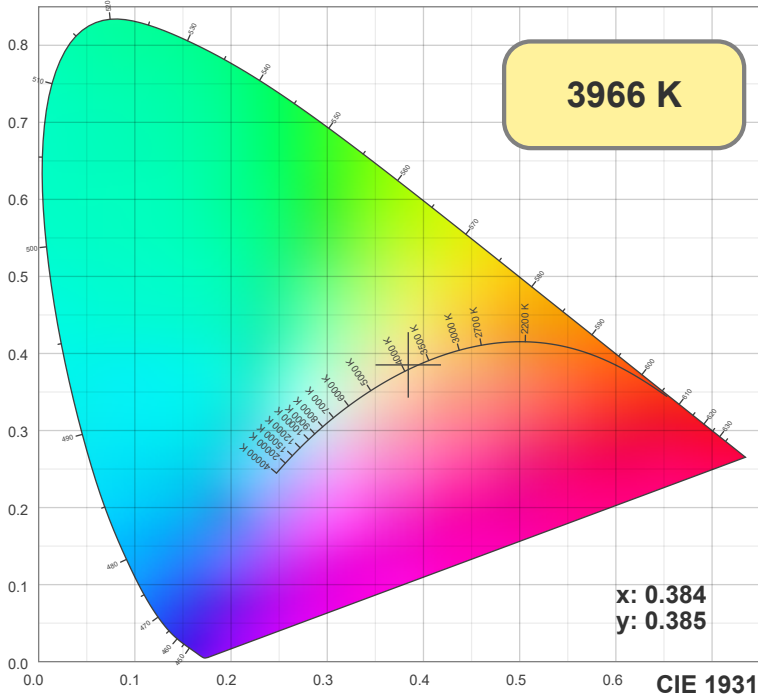


Power

Voltage: 227 V

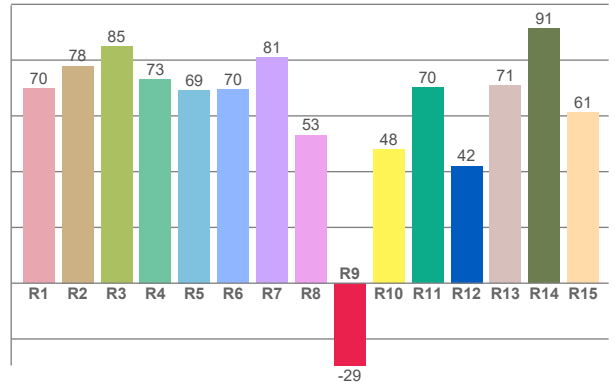
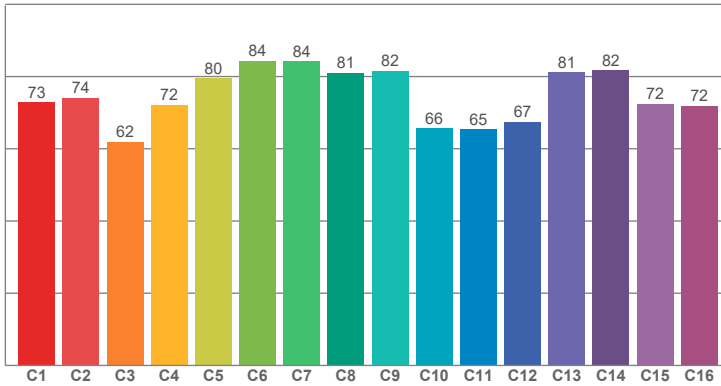
Current: 0.533 A





TM30: 74.5

CRI: 72.3 (R1-R8)



CRI R values, only R1-R8 are used to calculate final CRI value

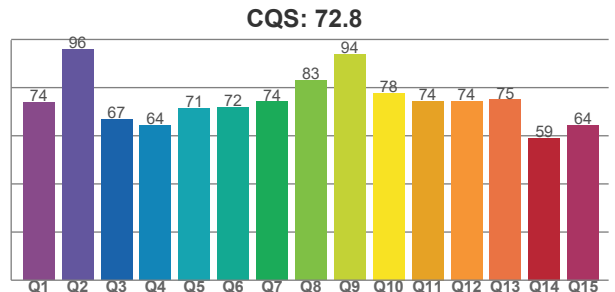
R1	R2	R3	R4	R5	R6	R7	R8	R9	R10	R11	R12	R13	R14	R15
69.81	77.89	84.92	73.19	69.24	69.53	80.87	53.12	-29.49	48.06	70.24	42.07	70.89	91.33	61.30

TM30 C values, 16 binned values out of total of 99 C values

C1	C2	C3	C4	C5	C6	C7	C8	C9	C10	C11	C12	C13	C14	C15	C16
72.90	74.12	61.87	72.10	79.57	84.33	84.21	81.02	81.55	65.72	65.37	67.48	81.16	81.70	72.43	71.89

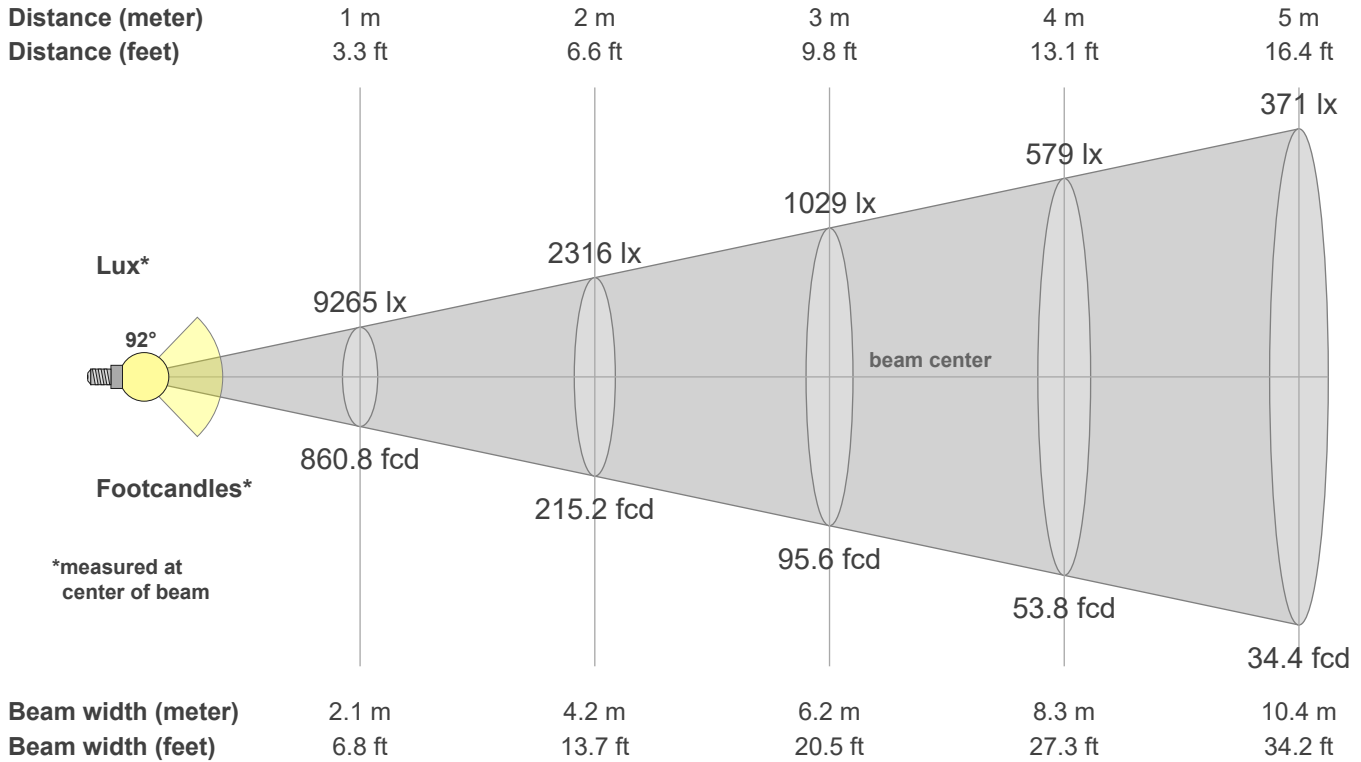
CQS Q values

Q1	Q2	Q3	Q4	Q5	Q6	Q7	Q8	Q9	Q10	Q11	Q12	Q13	Q14	Q15
73.78	95.86	66.69	64.37	71.45	71.72	74.13	82.94	93.68	77.79	74.37	74.23	74.96	59.01	64.49



Color parameters

CCT	CRI	CRI R9	TM30 Rf	TM30 Rg	CQS	x	y	u	v	Duv
3966 K	72.3	-29.5	74.5	95.3	72.8	0.4	0.4	0.2	0.3	0.0028



**Intensities in 0° c-plane**

0°	5°	10°	15°	20°	25°	30°	35°	40°	45°	50°	55°	60°	65°	70°	75°	80°	85°	90°	95°
9265	9254	9220	9174	9111	8996	8744	8222	7186	5428	3460	2150	1375	852	504	285	146	46	5	0
100%	100%	100%	99%	98%	97%	94%	89%	78%	59%	37%	23%	15%	9%	5%	3%	2%	0%	0%	0%

**Intensities in 90° c-plane**

0°	5°	10°	15°	20°	25°	30°	35°	40°	45°	50°	55°	60°	65°	70°	75°	80°	85°	90°	95°
9265	9259	9237	9198	9112	8924	8572	7914	6661	4742	3008	1906	1217	753	441	246	125	26	4	0
100%	100%	100%	99%	98%	96%	93%	85%	72%	51%	32%	21%	13%	8%	5%	3%	1%	0%	0%	0%

**Intensities in 180° c-plane**

0°	5°	10°	15°	20°	25°	30°	35°	40°	45°	50°	55°	60°	65°	70°	75°	80°	85°	90°	95°
9265	9258	9235	9191	9083	8858	8467	7780	6530	4658	2996	1933	1252	783	459	250	123	27	3	0
100%	100%	100%	99%	98%	96%	91%	84%	70%	50%	32%	21%	14%	8%	5%	3%	1%	0%	0%	0%

**Intensities in 270° c-plane**

0°	5°	10°	15°	20°	25°	30°	35°	40°	45°	50°	55°	60°	65°	70°	75°	80°	85°	90°	95°
9265	9255	9228	9180	9113	8968	8672	8124	7088	5373	3448	2108	1312	817	489	278	143	45	7	0
100%	100%	100%	99%	98%	97%	94%	88%	77%	58%	37%	23%	14%	9%	5%	3%	2%	0%	0%	0%

Beam angle 50%	Field angle 10%	Cutoff angle 2.5%	Intensity ratio in 120° cone	Intensity ratio in 90° cone
92.3°	126.9°	151.9°	94.1%	75.9%