

# Slim Line – 180Ø, 230Ø, & 330Ø Button

Model: SLIMB180 , SLIMB230 & SLIMB330

## Installation Instructions

All installations must be carried out by a qualified electrician following local regulations. Make sure that the power is switched off before installation.

Please read and follow the 'Installation instructions' and 'Safety instructions' sections carefully before commencing installation.

Installation of this model can change from time to time please read instructions every time before installation. For detailed specification, please go to our website [eurotechlighting.co.nz](http://eurotechlighting.co.nz)

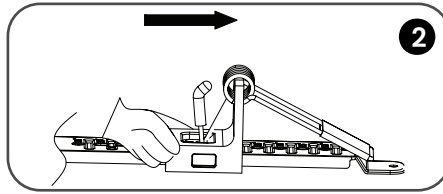
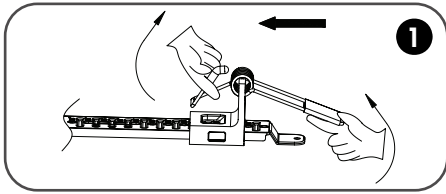
**Please note: This item should not be used in commercial environment. This product is suitable for residential application only.**

Code:	Colour:	Cut Out (mm):	Dimensions (mm):	Dimmable:	Double Insulated:	Kelvins:	Lumens:	Material:	Wattage:
SLIMB180-3K	White	From 65-155	180Ø x 15	Yes	Yes	3000K	840lm	Polycarbonate + Aluminium	12W
SLIMB180-4K						4000K	900lm		
SLIMB230-3K		From 65-205	230Ø x 15			3000K	1200lm		18W
SLIMB230-4K						4000K	1300lm		
SLIMB330-3K		-	330Ø x 25			3000K	2000lm		24W
SLIMB330-4K						4000K	2200lm		

## Installation Instructions

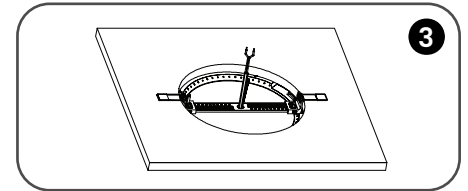
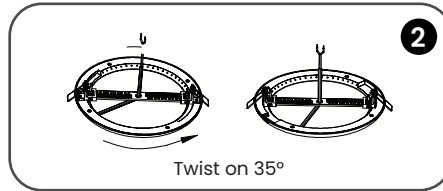
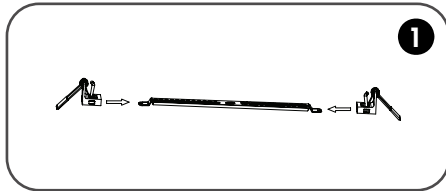
### Adjustable Spring Clip Instructions

- Reducing Cut-Out Size: Pull upwards on the spring and push inwards (to the centre of fitting). Release spring to lock into place at set cut-out diameter.
- Increasing Cut-Out Size: Push outwards on the spring clip (towards the outer edge of fitting). Spring clip will ratchet lock into place at set cut-out diameter.



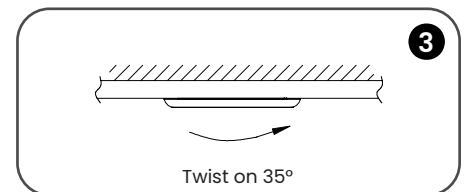
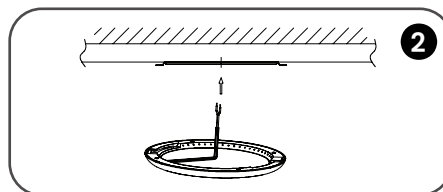
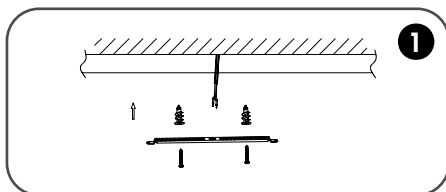
### Recessed

- Attach two spring clips to the bracket before installation, setting them to your cut-out requirement.
- Pull the fittings cable through the centre hole of the bracket before fixing the bracket onto the light fitting.
- Connect light fittings cable to your 230V mains power supply. Once connected fold back the spring clips to push through your cut-out before releasing clips to secure the light fitting in place.



### Surface Mounted

- Secure bracket to the ceiling using the hardware provided.
- Push the ceiling cable through the centre hole of the bracket.
- Connect light fittings cable to your 230V mains power supply with included connectors. Once connected twist on fitting to the installed bracket to secure the light fitting in place.



## Safety Instructions

Read these instructions carefully before commencing installation.

- The light source contained in this luminaire shall only be replaced by the manufacturer or this service agent or a similar qualified person.
- This LED luminaire must be installed by a licensed electrician ONLY following all local regulations.
- Ensure that the cables will not be squeezed or damaged by sharp edges.
- Clean the light with a soft cloth and a standard PH-neutral detergent.
- Misuse of/or changes to the appliance shall void all warranties.
- Do not install on a surface that is not suitable or deformed.
- Do not install on or above a surface with a high temperature.
- There should not be any materials that are corrosive, explosive.



For detailed specification, please go to our website [eurotechlighting.co.nz](http://eurotechlighting.co.nz)