

SPEND50 - Linkable Pendant

Model: SPEND50-L15-BLK/ WH & SPEND50-L18-BLK/WH

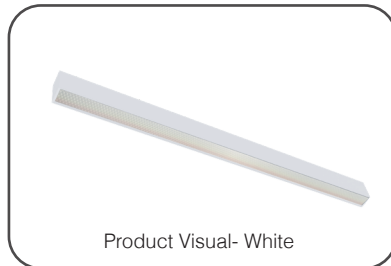
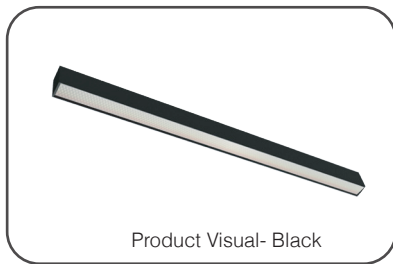
Installation Instructions- Linkable

All installations must be carried out by a qualified electrician following local regulations. Make sure that the power is switched off before installation. Please read and follow the 'Installation instructions' and 'Safety instructions' sections carefully before commencing installation.

Installation of this model can change from time to time please read instructions every time before installation. For detailed specification, please go to our website eurotechlighting.co.nz

Code:	Colour:	Dimensions (mm):	Dimmable	IP Rating:	Kelvins:	Lumens Flux Down:	Material:
SPEND50-L15-BLK	Black	1500L x 50W x 72D	No	IP20	CCT Switchable - 3K 4K	3750lm	Aluminium & Microprismatic Opal Diffuser
SPEND50-L15-WH	White						
SPEND50-L18-BLK	Black	1800L x 50W x 72D					
SPEND50-L18-WH	White					4500lm	

Product Information



Installation Instructions - Linkable

1. Remove the end cap carefully.
2. Prepare a joining connector and screws
3. Insert the joining connector to the lamp.
4. Connect the A and B connector, then lock joining connector through the holes on the back
5. Connection is done

Note:

Input cable: PVC material and 0.75mm² diameter. Same item could be inter-connected together.

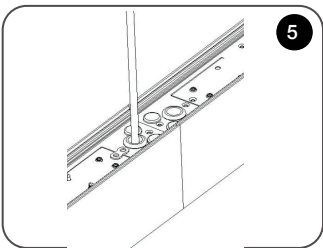
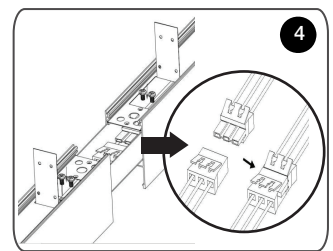
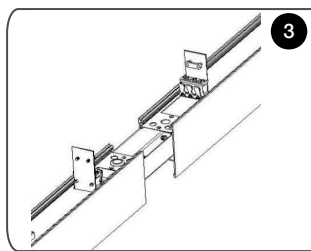
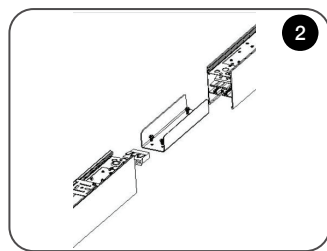
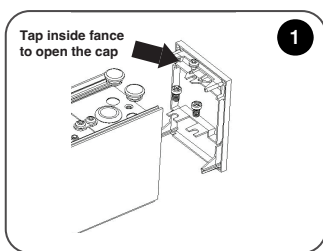
40W could connect up to 15pcs, and 48W could up to 12pcs. L, N and GND must be all wired during inter-connecting

Input cable: PVC material and 1.5mm² diameter. Same item could.

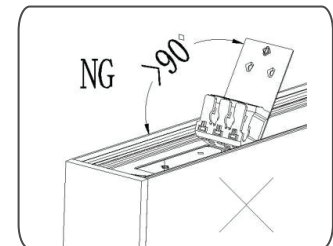
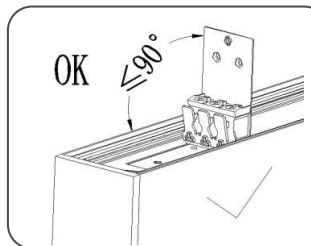
40W could connect up to 30pcs, and 48W could up to 25pcs. L, N, and GND must be all wired during inter-connecting

Correct open flip cover: the angle of the flip cover should be less than or equal to 90°, as below photo show:

Please refer to our website for more information (www.eurotechlighting.co.nz), or contact a Eurotech Lighting Consultant on: 09 818 6039



Flip Cover:



Safety Instructions

Read these instructions carefully before commencing installation.

1. The light source contained in this luminaire shall only be replaced by the manufacturer or this service agent or a similar qualified person.
2. This LED luminaire must be installed by a licensed electrician ONLY following all local regulations.
3. Ensure that the cables will not be squeezed or damaged by sharp edges.
4. Clean the light with a soft cloth and a standard PH-neutral detergent.
5. Misuse of/ or changes to the appliance shall void all warranties.
6. Do not install on a surface that is not suitable or deformed.
7. Do not install on or above a surface with a high temperature.
8. There should not be any materials that are corrosive, explosive.



For detailed specification, please go to our website eurotechlighting.co.nz

