

YYR & YYS Button

Model: YYR & YYS

Installation Instructions

All installations must be carried out by a qualified electrician following local regulations. Make sure that the power is switched off before installation. Please read and follow the 'Installation instructions' and 'Safety instructions' sections carefully before commencing installation.

Installation of this model can change from time to time please read instructions every time before installation. For detailed specification, please go to our website eurotechlighting.co.nz

Code:	Base Size (mm):	Dimensions (mm):	Dimmable:	Double Insulated:	IP Rating:	Kelvins:	Lumens:	Material:	Watts:
YYR15W3K	194Ø	220Ø x 53H	Yes	Yes	IP54	3000K	1200lm	UV resistant Polycarbonate body and diffuser	15W
YYR15W4K						4000K	1250lm		
YYR18W3K	250Ø	280Ø x 53H				3000K	1450lm		18W
YYR18W4K						4000K	1500lm		
YYR24W3K	300Ø	330Ø x 53H				3000K	2000lm		24W
YYR24W4K						4000K	2050lm		
YYS15W3K	188	220L x 220W x 53H				3000K	1200lm		15W
YYS15W4K						4000K	1250lm		
YYS18W3K	246.4	280L x 280W x 53H				3000K	1450lm		18W
YYS18W4K						4000K	1500lm		
YYS24W3K	296	330L x 330W x 53H				3000K	2000lm		24W
YYS24W4K						4000K	2050lm		

Product Information - YYR



Product Information - YYS



Safety Instructions

Read these instructions carefully before commencing installation.

- The light source contained in this luminaire shall only be replaced by the manufacturer or this service agent or a similar qualified person.
- This LED luminaire must be installed by a licensed electrician ONLY following all local regulations.
- Ensure that the cables will not be squeezed or damaged by sharp edges.
- Clean the light with a soft cloth and a standard PH-neutral detergent.
- Misuse of/or changes to the appliance shall void all warranties.
- Do not install on a surface that is not suitable or deformed.
- Do not install on or above a surface with a high temperature.
- There should not be any materials that are corrosive, explosive.



For detailed specification, please go to our website eurotechlighting.co.nz



YYR & YYS Button

Model: YYR & YYS

Installation Instructions

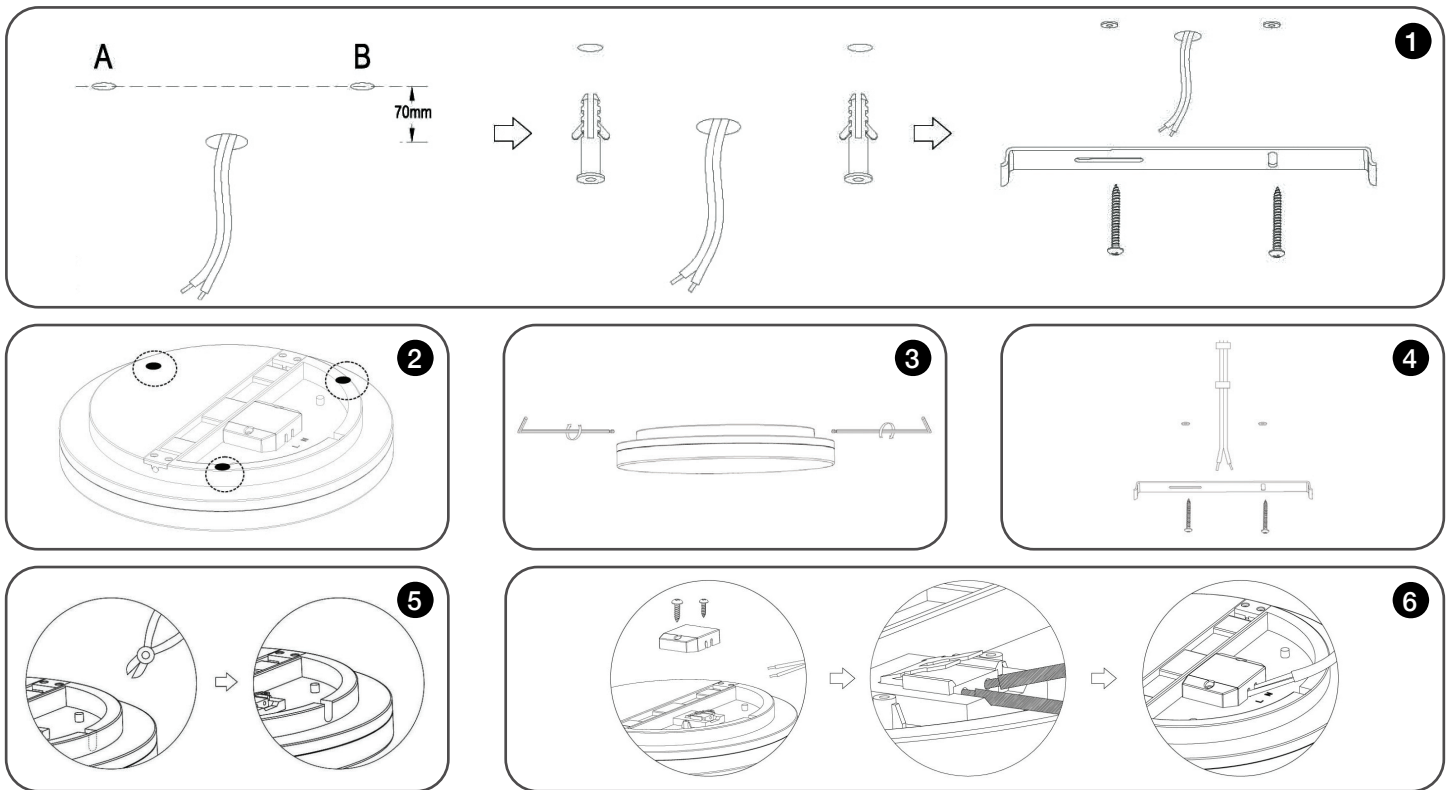
Installation Instructions

Concealed Installation:

- Fix the mounting bracket.
 - For cement, ceiling use the cable outlet as the central point, shift 70mm and drill two 50mm holes. A and B, Knock two white expansion tubes provided into the holes.
 - Turn two pieces of 40 x 30mm screws into the white expansion tubes through the bracket holes to fix the bracket on the ceiling.
 - For wooden or other non-cement ceiling-use two pieces of 40 x 15mm screws directly to mount the bracket on the ceiling.
- Wire the lamp.
 - Stick the black EVA anti-vibration pad onto the back surface of the lamp, please refer to the picture.
 - Open the waterproof terminal box, wiring L, N accordingly.
 - After finishing wiring, put the cable in the arched grooves properly, then lock the waterproof terminal box with the screw to maintain IP Rating.
- Fixing the lamp. Place any excess wire in the space in the backplate. Fix the fitting to the mounting bracket with Allen key on both sides.

Open Installation:

- Fix the mounting bracket.
 - For cement, ceiling make sure the bracket and the cable are at a 90-degree angle. According to the length of the cable, choose the appropriate place to drill two 50mm holes A and B, knock two white expansion tubes into the holes.
 - Turn two pieces of 40 x 30mm screws into the white expansion tubes through the bracket hole to fix the bracket on the ceiling.
 - For wooden or other non-cement ceiling-use two 40 x 15mm screws directly to mount the bracket on the ceiling.
- Wiring the lamp.
 - Cut the barrier for the cable entry hole along the dotted line by using side cutters, as shown in the picture. For wiring please refer to 2.
 - Do not lock the waterproof terminal box if the cable is not sitting in the arched grooves properly, otherwise the waterproof function will be affected.
- Fixing the lamp. Please refer to the above point 3 for fixing and making sure the cable passes through the cut cable entry hole.



Safety Instructions

Read these instructions carefully before commencing installation.

- The light source contained in this luminaire shall only be replaced by the manufacturer or this service agent or a similar qualified person.
- This LED luminaire must be installed by a licensed electrician ONLY following all local regulations.
- Ensure that the cables will not be squeezed or damaged by sharp edges.
- Clean the light with a soft cloth and a standard PH-neutral detergent.
- Misuse of/ or changes to the appliance shall void all warranties.
- Do not install on a surface that is not suitable or deformed.
- Do not install on or above a surface with a high temperature.
- There should not be any materials that are corrosive, explosive.



For detailed specification, please go to our website eurotechlighting.co.nz