

MODE - Modular Downlight

Model: MODE-WH

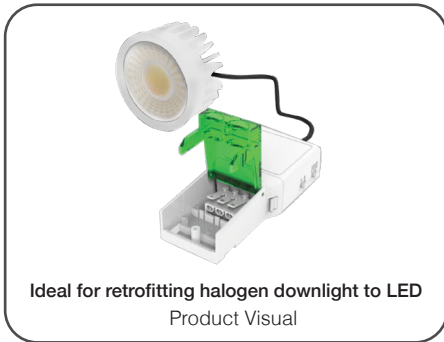
Installation Instructions

All installations must be carried out by a qualified electrician following local regulations. Make sure that the power is switched off before installation. Please read and follow the 'Installation instructions' and 'Safety instructions' sections carefully before commencing installation.

Installation of this model can change from time to time please read instructions every time before installation. For detailed specification, please go to our website eurotechlighting.co.nz

Code:	Cut-Out(mm):	Dimensions (mm):	Dimmable:	IP Rating:	Kelvins:	Lumens:	Material:	Selectable Wattage:
MODE-WH	Ø46mm	Ø50 x 30Hmm	Yes	IP40	CCT - 2.7K 3K 4K 6.5K	4W(380lm-440lm) or 6W(480-570lm)	Die-Casting Aluminium + PC Diffuser	4W or 6W

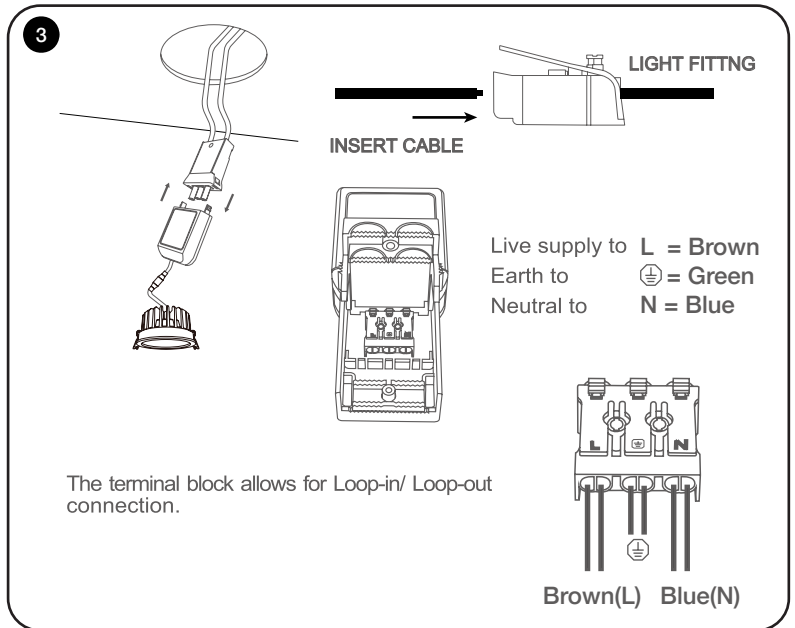
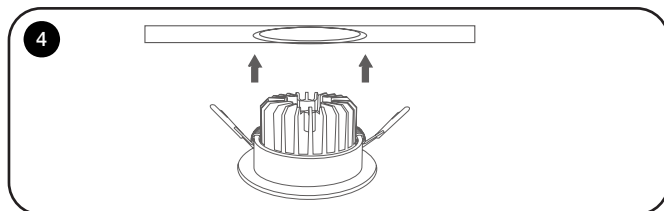
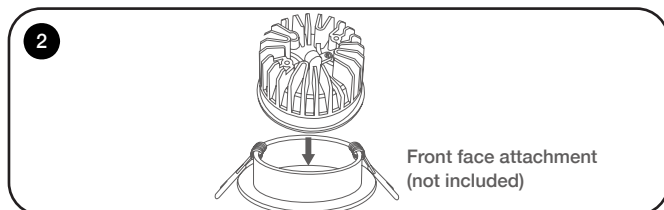
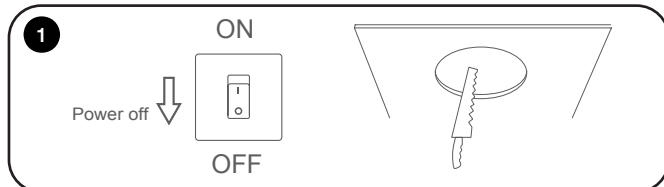
Product Information



Installation Instructions

1. Make sure power is turned off. Then cut-out the required hole in the ceiling that fits the fitting.
2. Insert the modular into the downlight front face as shown in image **2**
3. Connect the fittings driver with the supplied cable. Utilise the drivers terminal block for better connection. Pay close attention to live + neutral markings:
Live = Brown
Earth = Green
Neutral = Blue
4. Then place fitting into the cut-hole once assembled together.

Please refer to our website for more information (www.eurotechlighting.co.nz), or contact a Eurotech Lighting Consultant on: 0800 688 229



Safety Instructions

Read these instructions carefully before commencing installation.

1. The light source contained in this luminaire shall only be replaced by the manufacturer or this service agent or a similar qualified person.
2. This LED luminaire must be installed by a licensed electrician ONLY following all local regulations.
3. Ensure that the cables will not be squeezed or damaged by sharp edges.
4. Clean the light with a soft cloth and a standard PH-neutral detergent.
5. Misuse of/ or changes to the appliance shall void all warranties.
6. Do not install on a surface that is not suitable or deformed.
7. Do not install on or above a surface with a high temperature.
8. There should not be any materials that are corrosive, explosive.



For detailed specification, please go to our website eurotechlighting.co.nz

Eurotech
lighting