

# Cube - Bulkhead

Model: YBU & YBL

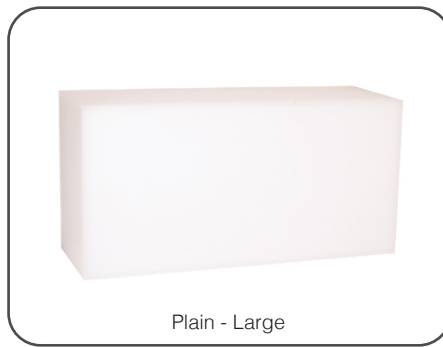
## Installation Instructions

All installations must be carried out by a qualified electrician following local regulations. Make sure that the power is switched off before installation. Please read and follow the 'Installation instructions' and 'Safety instructions' sections carefully before commencing installation.

Installation of this model can change from time to time please read instructions every time before installation. For detailed specification, please go to our website [eurotechlighting.co.nz](http://eurotechlighting.co.nz)

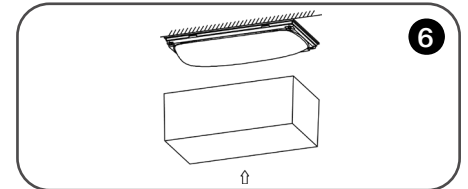
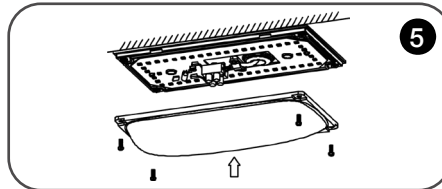
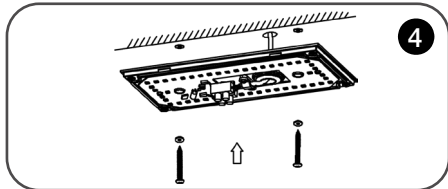
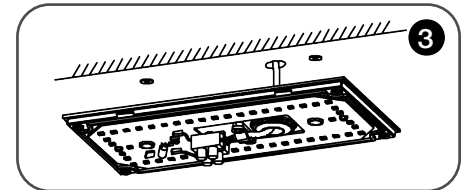
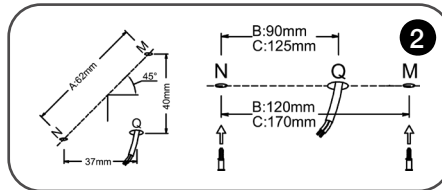
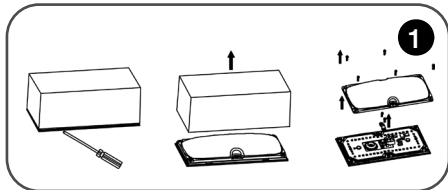
| Code:   | Type:     | Dimensions (mm):  | Double Insulated: | IP Rating: | Kelvins: | Lumens: | Material:                   | Watts: |
|---------|-----------|-------------------|-------------------|------------|----------|---------|-----------------------------|--------|
| YBU5W3K | Up / Down | 100W x 100H x 75D | Yes               | IP65       | 3000K    | 150lm   | UV resistant Poly-carbonate | 5W     |
| YBL5W3K | Plain     |                   |                   |            |          | 400lm   |                             |        |
| YBU8W3K | Up / Down | 200W x 100H x 75D |                   |            |          | 300lm   |                             | 8W     |
| YBL8W3K | Plain     |                   |                   |            |          | 800lm   |                             |        |

### Product Information



### Installation Instructions

- Open the outer cover by sliding a flat head screwdriver along the gap between the cover and backplate. Open the inner cover with a Phillips screwdriver.
- Drill two holes (5Ømm) N & M, knock two expansion tubes into the holes. Please refer to pictures for distance. Then turn the power supply off.
- Feed the wire through the waterproof rubber gasket, peel off the outer wire by 12mm, then peel off the inner wire N, L by 6mm. Connect the wire to N, L accordingly.
- Take two screws (4Ømm x 30mm), with rubber gaskets, then screw the lamp onto the marked point N, M.
- Screw the inner cover back onto the lamp properly to ensure a proper seal is made.
- Turn on the power, test if the lamp is working properly. If yes, then click the outer cover onto the lamp.



### Safety Instructions

Read these instructions carefully before commencing installation.

- The light source contained in this luminaire shall only be replaced by the manufacturer or this service agent or a similar qualified person.
- This LED luminaire must be installed by a licensed electrician ONLY following all local regulations.
- Ensure that the cables will not be squeezed or damaged by sharp edges.
- Clean the light with a soft cloth and a standard PH-neutral detergent.
- Misuse of/or changes to the appliance shall void all warranties.
- Do not install on a surface that is not suitable or deformed.
- Do not install on or above a surface with a high temperature.
- There should not be any materials that are corrosive, explosive.



For detailed specification, please go to our website [eurotechlighting.co.nz](http://eurotechlighting.co.nz)

