

Byron Elite - Wall Lights

Model: LUS

Installation Instructions

All installations must be carried out by a qualified electrician following local regulations. Make sure that the power is switched off before installation. Please read and follow the 'Installation instructions' and 'Safety instructions' sections carefully before commencing installation.

Installation of this model can change from time to time please read instructions every time before installation. For detailed specification, please go to our website eurotechlighting.co.nz

Code:	Colour:	Dimensions (mm):	Double Insulated:	IP Rating:	Lamps:	Material:	Shape:	Type:	Voltage:
LUS2205	Black	155H x 90Ø x 120D	No	IP65	2 x GU10 10W max (Not Included)	Die-casting aluminium body + Frost Glass	Round	Up/Down	230V
LUS1005		108H x 90Ø x 120D			1 x GU10 10W max (Not Included)			One-Way	

Product Information



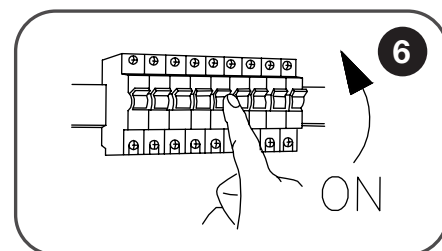
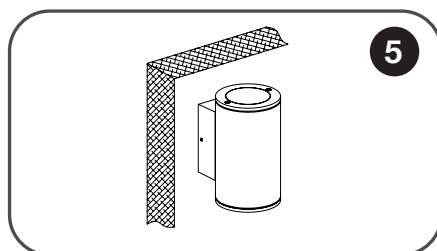
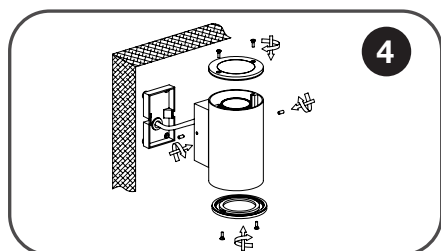
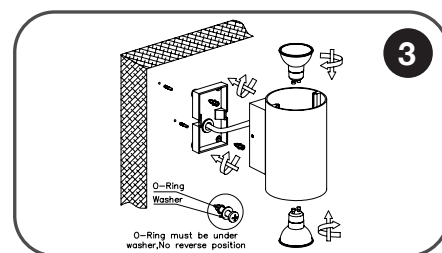
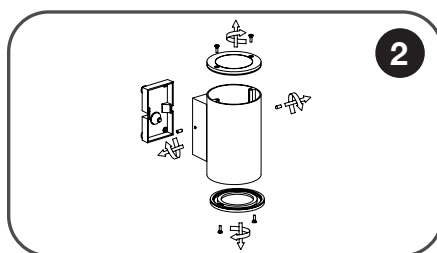
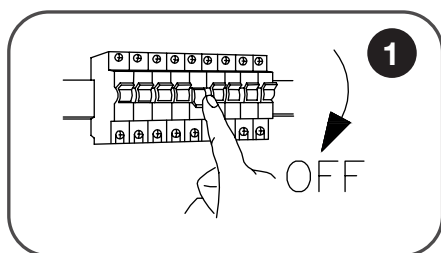
Product Visual - LUS2205



Product Visual - LUS1005

Installation Instructions

1. Make sure power is turned off.
2. Open the back plate of fitting with a phillips screwdriver.
3. Open the top and/or bottom of the fitting with the included Allen key. Insert the GU10 lamp and gently knock the provided plastic expansion tubes into the pre-drilled holes, ensuring the plastic tubes are flush with the mounting surface. Run the cable through the rubber seal. Fix the backplate to the mounting surface ensuring the arrow is facing up. Then connect cables paying attention to live + neutral markings:
Blue = Negative
Brown = Positive
4. Screw on the cover
5. Fix the fitting
6. Turn the power back on



Safety Instructions

Read these instructions carefully before commencing installation.

1. This LED luminaire must be installed by a licensed electrician ONLY following all local regulations.
2. Ensure that the cables will not be squeezed or damaged by sharp edges.
3. Clean the light with a soft cloth and a standard PH-neutral detergent.
4. Misuse of/ or changes to the appliance shall void all warranties.
5. Do not install on a surface that is not suitable or deformed.
6. Do not install on or above a surface with a high temperature.
7. There should not be any materials that are corrosive, explosive.



For detailed specification, please go to our website eurotechlighting.co.nz

Eurotech
lighting