

# Apical - Wall Lights

## Model: LUD1701 & LUD2300

### Installation Instructions

All installations must be carried out by a qualified electrician following local regulations. Make sure that the power is switched off before installation. Please read and follow the 'Installation instructions' and 'Safety instructions' sections carefully before commencing installation.

Installation of this model can change from time to time please read instructions every time before installation. For detailed specification, please go to our website [eurotechlighting.co.nz](http://eurotechlighting.co.nz)

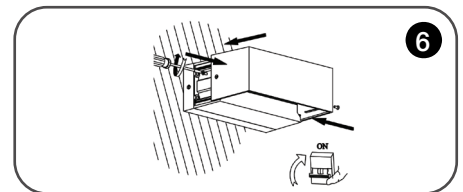
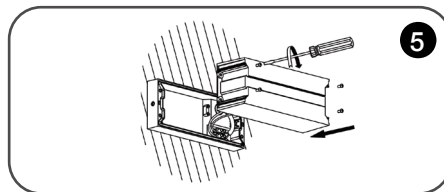
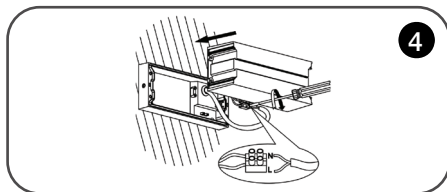
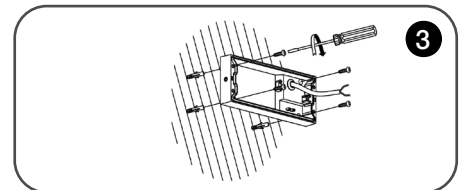
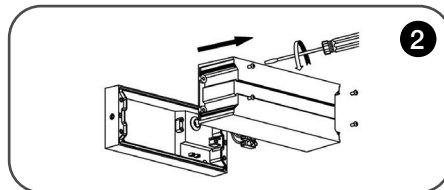
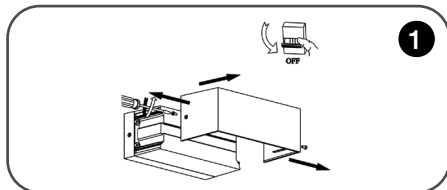
Code:	Colour:	Dimensions (mm):	Double Insulated:	IP Rating:	Kelvins:	Lumens:	Material:	Voltage:	Wattage:
LUD1701CCT-BLK	Black	172L x 82D x 46H	Yes	IP65	3000K / 4000K / 6000K	460lm / 520lm / 500lm	Polycarbonate + ABS with polycarbonate diffuser & UV stable polycarbonate lens	230V	9W
LUD1701CCT-WH	White								
LUD2300CCT-BLK	Black	230L x 101D x 90H				12W			
LUD2300CCT-WH	White								

## Product Information



## Installation Instructions

1. Make sure power is turned off. Unscrew Phillips screws on the side and take off the front cover of the fitting.
2. Remove the LED lens by removing the 4 screws.
3. Gently knock the provided plastic expansion tubes provided into the pre-drilled holes, ensuring the plastic tubes are flush with the mounting surface. Run the power cable through the rubber seal and fix the backplate to the wall.
4. Connect the power cable to the connector black paying attention to live + neutral markings.
  - Blue = Negative
  - Brown = Positive
 Use the dip switch at the back of the fitting to change colour temperature.
  - Switch 1 ON = 3000K
  - Switch 2 ON = 6500K
  - Switch 1 & 2 ON = 4000K
5. Take the front cover off the product and line up the fixing holes of the fitting to the pre-drilled fixing holes on your mounting surface. Fix the fitting with provided screws.
6. Fit LED lens back onto the fitting ensuring that screw seals are used and a tight seal is made.



## Safety Instructions

Read these instructions carefully before commencing installation.

1. The light source contained in this luminaire shall only be replaced by the manufacturer or this service agent or a similar qualified person.
2. This LED luminaire must be installed by a licensed electrician ONLY following all local regulations.
3. Ensure that the cables will not be squeezed or damaged by sharp edges.
4. Clean the light with a soft cloth and a standard PH-neutral detergent.
5. Misuse of/or changes to the appliance shall void all warranties.
6. Do not install on a surface that is not suitable or deformed.
7. Do not install on or above a surface with a high temperature.
8. There should not be any materials that are corrosive, explosive.



For detailed specification, please go to our website [eurotechlighting.co.nz](http://eurotechlighting.co.nz)

