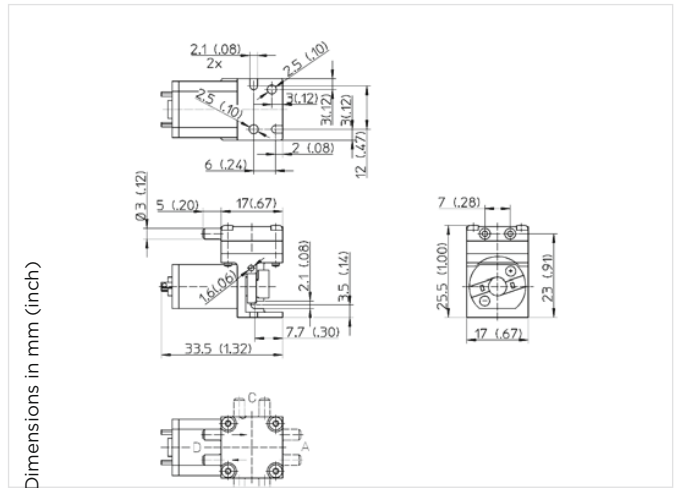


# Diaphragm Pump 2002 VD LC - PMP-0010

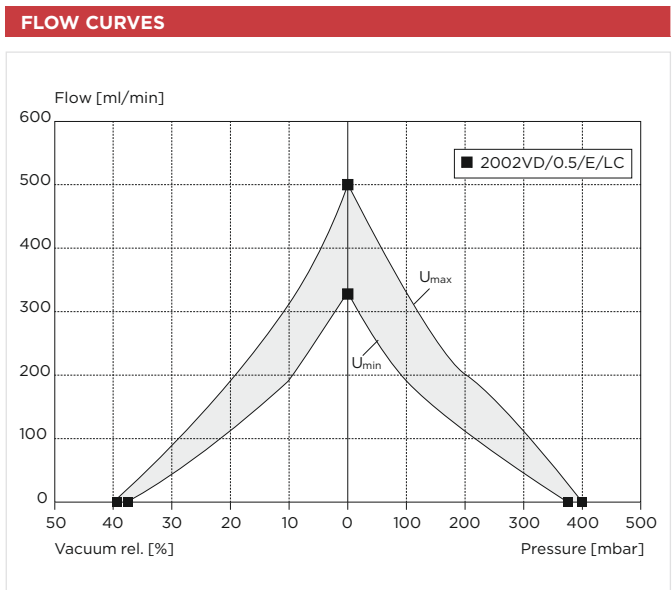
<b>Flow</b>	<b>500 ml/min</b>
<b>Max. pressure</b>	<b>400 mbar</b>
<b>Max. vacuum</b>	<b>40 %</b>



PNEUMATIC DATA	
Description	2002VD/0.5/E/LC
Part number	3.5 V <b>20020215</b> (3.5 to 5 V)
Max. flow	500 ml/min
Max. intermittent duty	380 to 400 mbar
Max. continuous pressure	150 mbar
Max. restart pressure	150 mbar
Max. vacuum	36 to 40 %
Max. restart vacuum	15 %

ELECTRICAL DATA	
Motor type	Permanent magnet
Power consumption	3.5 to 5 V/305 to 460 mW
Protection class	IP00
Bearing type	Sleeve bearing

GENERAL DATA	
Ambient temperature	10 to 50 °C
Media temperature	10 to 50 °C
Weight	17 g
Port direction	D



WETTED PARTS		OPTIONS
Pump head	PF	
Diaphragm, valves	EPDM	FKM, Silicone

Model key: **2002...** Stock programme

