



anti set-off spray powder

... **has a worldwide reputation in the printing industry**

... *is an inorganic, mineral product made of natural Calciumcarbonate coming right out of our environment.*

... *is crystalline, has because of a special manufacturing process rounded particles and is **not** soluble in water.*

... **is, thanks to its high specific weight, producing exceptionally little dust and is safe and economical in use and application.**

... *is so far unequalled in its grading and quality of the grain. The uniformity is extraordinarily.*

... *is to be used without any problem. Whatever paper grammage or reverse side paper structure, there is a suitable grade available.*

**health offers for more than 4 decades as a natural product the best basis to the aspects of health; is proved by the German authorities BG-BIA! ( German Printing Trades Association )**

*storage is not hygroscopic and not soluble, therefore not sensitive to humidity, it stays stable in stock without any limit of time.*

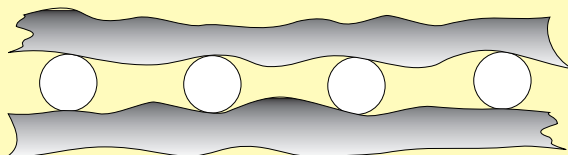
*dry spraying is suitable for all kinds of spraying devices working with air, flows superbly and sprays well.*

... *does not form lumps and does not block the equipment.*

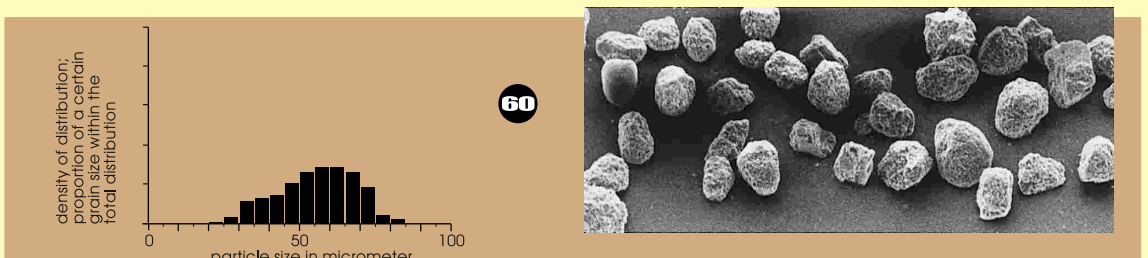
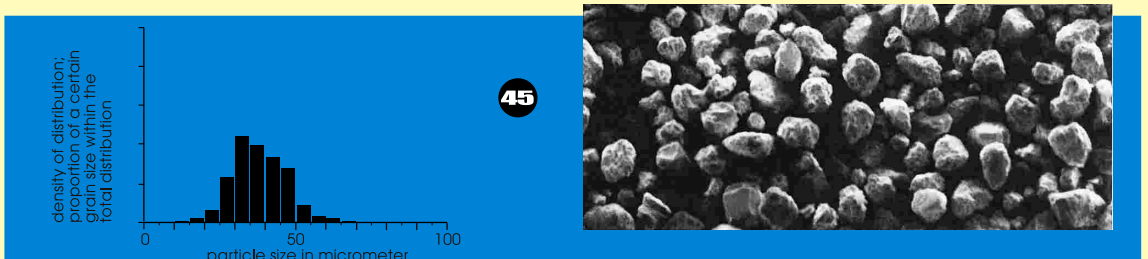
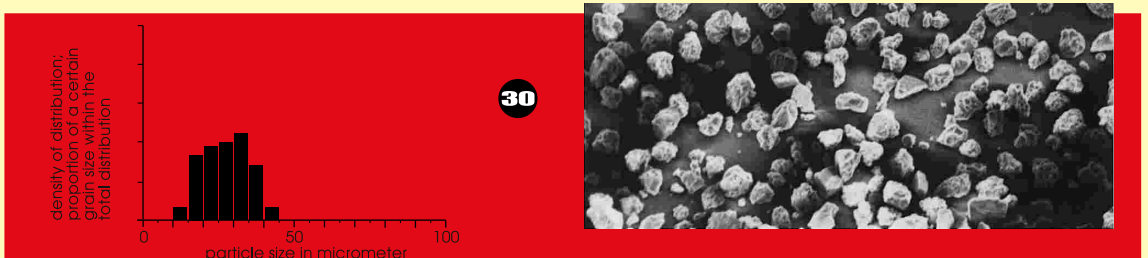
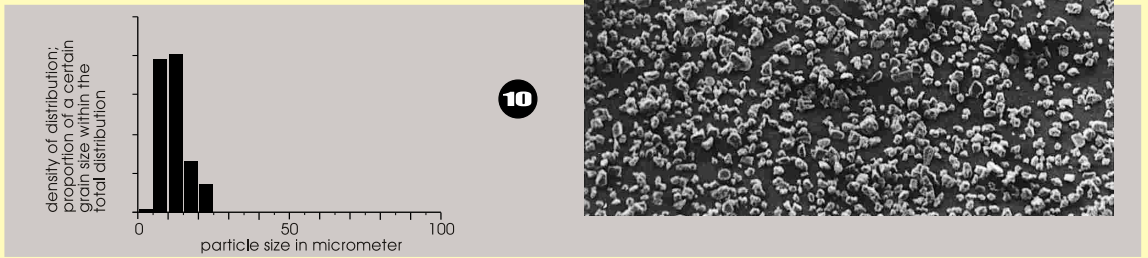
*electrostatic does not carry loads, has antistatic properties.*

*cleaning thanks to its high specific weight, produces very little dust, contrary to organic spray powders. It therefore reduces cleaning work around the press, especially of the delivery.*

*grain size is available in 7 grades. The grain sizes 10, 15, 20, 30, 45, 60 and 80 are extremely precise and contain no inactive fine particles. The uniformity of all the grain sizes is unequalled.*



**Only the equal grains guarantee a regular distance between the sheets at a minimum of powder consumption and smallest formation of dust.**



photographs by scanning electron microscope  
100 - fold enlarged  
1 mm corresponds to 10  $\mu$ m  
comparative scale  
\*\*\*\*\*



.... no experiments !

**the right grain fraction  
for any  
paper grammage  
and any  
paper reverse side**

super calandered and blade coated papers and boards	up to 70 g	70 - 120 g	120 - 170 g	170 - 200 g			
art paper and highly polished papers and boards	up to 90 g	80 - 150 g	150 - 250 g	250 - 400 g	above 400 g		
glazed boards e.g. Ivory boards and Bristolboards			150 - 200 g	200 - 300 g	300 - 600 g	above 600 g	
rough surface boards				150 - 250 g	250 - 500 g	500 - 600 g	
for special cases, where a particularly large particle-size is necessary							▼
	<b>10</b>	<b>15</b>	<b>20</b>	<b>30</b>	<b>45</b>	<b>60</b>	<b>80</b>

**Please note on principle !**

The above table is just a recommendation to help you to choose the right grade of our anti set-off spray powder.  
When printing on one-sided coated paper or board the structure of the reverse side sets the standard concerning the choice of the right grain fraction. Further considerations should include the height of the stack and the quantity of colour application. Beyond that, we recommend to use the next coarser type if the powder quantity can be reduced by doing so.



**KSL** staubtechnik gmbh

89415 Lauingen/Donau Germany phone +49 9072 95000 fax +49 9072 950050  
www.ksl-staubtechnik.de

