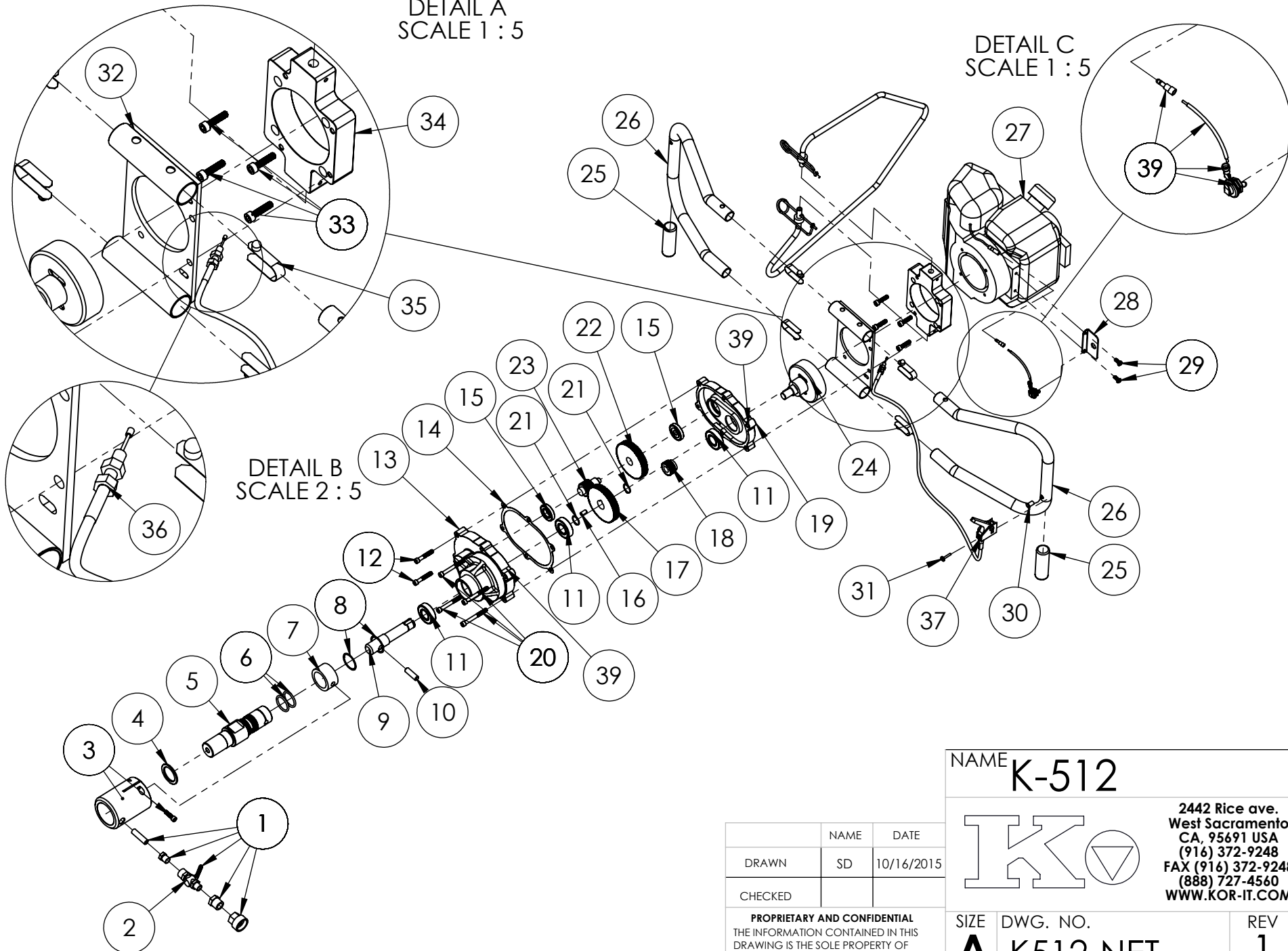


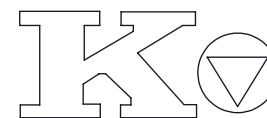
DETAIL A
SCALE 1 : 5

DETAIL C
SCALE 1 : 5

DETAIL B
SCALE 2 : 5



NAME **K-512**



2442 Rice ave.
West Sacramento
CA, 95691 USA
(916) 372-9248
FAX (916) 372-9248
(888) 727-4560
WWW.KOR-IT.COM

	NAME	DATE
DRAWN	SD	10/16/2015
CHECKED		

PROPRIETARY AND CONFIDENTIAL
THE INFORMATION CONTAINED IN THIS
DRAWING IS THE SOLE PROPERTY OF
KOR-IT[®] Inc. ANY
REPRODUCTION IN PART OR AS A WHOLE
WITHOUT THE WRITTEN PERMISSION OF
KOR-IT[®] Inc. IS PROHIBITED.

SIZE **A** DWG. NO. **K512-NET**

REV
1

DO NOT SCALE DRAWING

SHEET 1 OF 2

NO	QTY	PART#	DESCRIPTION - SALE
1	1	AP300-001	WATER VALVE ASSEMBLY, K400'S / 500'S
2	1	HVW-1049	VALVE, WATER VALVE, AIR COCK
3	1	AP500-005	WATER COVER ASSEMBLY, K500'S
4	1	FWC-3138	WASHER, DRIVE SHAFT, COPPER
5	1	P500-004-001	SHAFT, MAIN DRIVE, K500'S
6	2	HOR-1007	O-RING, WATER SWIVAL, 500 SERIES
7	1	P500-004-002	BUSHING, WATER SWIVAL, K500'S
8	2	FRR-3097	RETAINING RING, K501 / K-525
9	1	P500-001-007	SHAFT, DRIVE, OUTPUT, K500'S
10	1	FPD-3100	PIN, DOWEL, 3/8"
11	3	HBE-1034	BEARING, CLOSED SEAL 3/4"
12	2	FSS-3131	SCREW, SOCKET HEAD CAP, 1/4"-20 X 1 1/2", BLACK OXIDE
13	1	P500-001-001	CASE, BOTTOM, GEAR BOX, 500'S
14	1	HGG-1041	GASKET, GEAR, 500 SERIES
15	2	HBE-1058	BEARING, OPEN SEAL, 500 SERIES
16	1	FPD-3099	PIN, DOWEL, 1/4"
17	1	HGS-1083	GEAR, SPUR, 44 TOOTH, K512
18	1	HGS-1082	GEAR, SHAFT, 7 - TOOTH , K512
19	1	P500-001-002	CASE, TOP, GEARBOX, 500'S
20	4	FSS-3133	SCREW, SOCKET HEAD 2-1/4, BLACK OXIDE
21	2	FRR-3096	RETAINING RING, EXTERNAL, 3/4"
22	1	HGS-1085	GEAR, SPUR, 48 TOOTH, K512
23	1	HGS-1084	GEAR, SHAFT, 10-TOOTH, K512
24	1	HDC-1081	DRUM, CLUTCH, K512
25	2	HHG-5008	HANDLE BAR GRIPS K 500'S
26	2	P500-002-001	HANDLE BAR K500'S
27	1	HMG-1042	MOTOR, HONDA, GX35NT, 500'S
28	1	P500-003-001	BRACKET, SWITCH, K500'S
29	2	FSP-3084	SCREW, PHILLIPS PAN HEAD MACHINE, 10-32 X 1/2", ZINC
30	1	FNK-3098	NUT, KNURLED, RIVET, 10-24
31	1	FSP-3081	SCREW, PHILLIPS PAN HEAD MACHINE, 10-24 X 3/4", ZINC
32	2	AP500-A02	BASE, HANDLE BAR, K500'S
33	4	FSS-3132	SCREW, SOCKET HEAD, M6-1.0 X 25MM, BLACK OXIDE
34	1	P500-003-002	PLATE, ADPTR, MTR MTNG, K500'S
35	4	HCL-5009	CLIP, HANDLE BARS, 500 SERIES
36	1	AP500-B02	THROTTLE CABLE, K500'S
37	1	P500-B02-005	TRIGGER, THROTTLE, K500
38	1	AP512-001	GEAR BOX ASSEMBLY, K500
39	1	AP500-003	KILL SWITCH ASSEMBLY