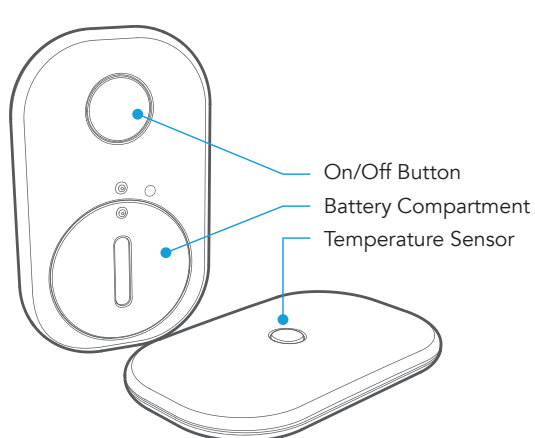


°Celsius™

Wearable Temperature Sensor
with Continuous Monitoring

User Manual



Contents

1. Accessories
2. Intended Use
3. Application
4. Getting Started
5. Additional Details for Wearing
6. Operating Instructions
7. Troubleshooting
8. Maintenance & Preservation
9. Cleaning & Disinfection
10. Important Precautions
11. Technical Specifications
12. Functional Description
13. Definitions of Symbols
14. Disclaimer
15. Caution
16. Declaration
17. Copyright Statement
18. Standard Warranty Information
19. Appendix
20. Purchasing Record for Celsius™

Definitions

Sensor: Celsius™ wearable thermometer.

Smart Phone/Tablet: Smart mobile device that runs the Celsius™ app and receives a Bluetooth signal from the sensor.

1. Accessories

1. One CR2025 battery
2. One battery tool
3. Medical patches (1 box)
4. User manual
5. Warranty card
6. Certificate of competency

2. Intended Use

The wireless sensor is a battery-operated electronic device with the intended use of measuring and monitoring human axillary temperature continuously and transmitting the results via wireless signal.

3. Application

The sensor is reusable and intended for temperature measurement of adult and paediatric (ages two years and over). It can be used in hospital and at home. Not suitable for ICU or other emergency situations.

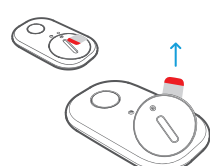
4. Getting Started

1. Insert the battery

Step 1:

Prepare new sensor

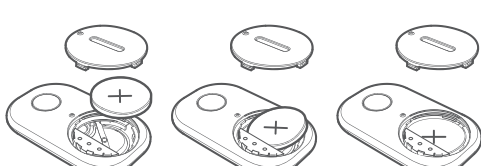
Pull to open the battery compartment, discard the "pull" tab.



Step 2:

Insert the Battery

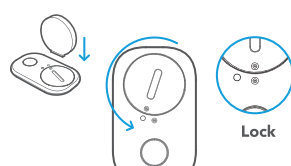
Place the battery into the opening, making sure it is the correct way up with the positive side facing upwards.



Step 3:

Closing the battery compartment

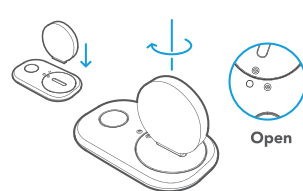
Replace the cover and rotate anticlockwise using the tool provided to close.



Note: Make sure that the battery makes good contact with both positive and negative connectors. Whilst inserting, try to avoid bending the connector inside the battery compartment as this may reduce connectivity.

If you need to change battery:

Use the battery tool and rotate clockwise to open then follow Step 2.



2. Download the app

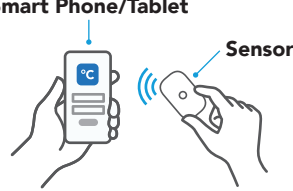
1. Go to app Store or Google Play and search "Celsius".
2. Download Celsius™ app.



3. Setting up the Connection

1. Turn on your smart phone or tablet and ensure Bluetooth is turned on. Make sure the smart phone or tablet is connected to the Internet.
2. Switch on the temperature sensor (press the button for more than 2 seconds. A single LED blink indicates power is on.)
3. Open the Celsius™ app on the smart phone or tablet and sign up, or sign in if already signed up.
4. Swipe your finger downwards on the screen where indicated.
5. The app should automatically pick the sensor up (otherwise choose the sensor on the list of identified serial numbers).
6. Wait for any readings to be synchronised.
7. The temperature readings will now appear. If it does not, please refer to our FAQs which can be found on our website www.celsius.com. This will help you resolve any issues.

Smart Phone/Tablet



4. Wearing Preparation

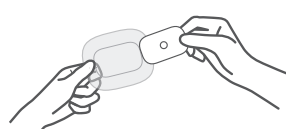
Step 1

Remove the cover of the patch.



Step 2

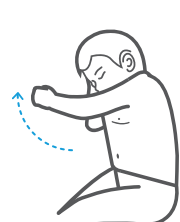
Place the back of the sensor onto the surface of the patch – the back of the sensor is where you found the battery compartment. Make sure that the sensor is in the middle of the patch.



5. Wearing

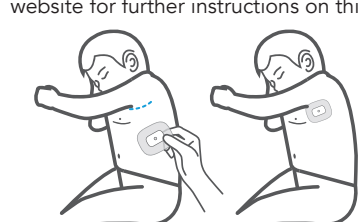
Step 1:

Lift the arm naturally



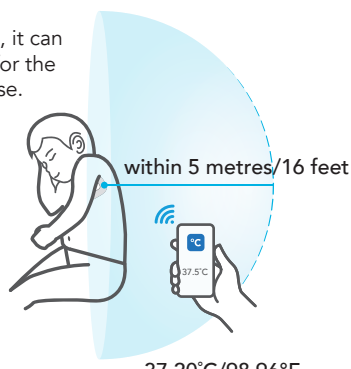
Step 2:

Apply the sensor horizontally, just below the natural crease of the armpit. See our website for further instructions on this.



Step 3:

Hold arm against side, it can take up to 8 minutes for the temperature to stabilise.



Note: An adult should help children wear and operate the sensor, to ensure the area of skin that contacts with the sensor stays flat and smooth.

Note: To avoid disconnections, please make sure sensor and smart phone or tablet are on the same side of your chest when wearing the sensor.

5. Additional details for wearing

We recommend that users use the patches we provide from the original manufacturer.

Wear the sensor in a cool, neutral thermal environment for a better wearing experience.

DO NOT wear the sensor in the same place for more than 24 consecutive hours.

For continuous monitoring remove the sensor and replace the patch and reapply in the same position on the opposite side. Repeat every 24 hours where continuous monitoring is required.

If you feel unwell (uncomfortable or allergic) when using the patch, replace it with another type of patch based on your doctor's advice.

Note: For the most accurate results, make sure the smart phone or tablet has been at room temperature for at least 5 minutes before using it.

A fully-covered patch (no smaller than 76mm x 62mm) should be used.

- Do not reuse patches. If a patch is already folded over, a new patch is required.
- Removal of excess armpit hair in advance can help improve connection and so is advised where applicable.
- Clean the surface of the sensor with medical antibacterial wipes when sharing devices between different users.
- The material that contacts skin is non-toxic, non-irritating, and will not cause allergies or any other side effects.

6. Operating Instructions

1. Button functions

A long press (more than 2 seconds), switches the sensor on. A single LED blink indicates power is on.

Short press (less than 2 seconds): Checks status. A single LED blink indicates that sensor is connected to a smart phone or tablet. A double blink indicates that sensor is not connected to a smart phone or tablet. No LED blink indicates that sensor is off.

Double click and hold the button for 2 seconds: Switches sensor off. LED lights up for 2 seconds to indicate power is off.

2. Frequent operation patterns:

2.1 Connecting to smart phone or tablet for the first time:

- a) Turn on the smart phone or tablet and turn on Bluetooth, making sure the smart phone or tablet is connected to the Internet.
- b) A long press (more than 2 seconds) on the button will turn on the sensor.
- c) Run the Celsius™ app on the smart phone or tablet and sign in.
- d) Connect the sensor with the smart phone or tablet. If the sensor is not connected with the smart phone or tablet within 60 minutes after turning on, the sensor will turn itself off automatically.
- e) Wear the sensor.

2.2 Connecting to previously connected smart phone or tablet:

- a) Turn on the smart phone or tablet and turn on Bluetooth.
- b) A long press (more than 2 seconds) on the button will turn on the sensor.
- c) Run the Celsius™ app on the smart phone or tablet to monitor body temperature. Connection will be established automatically. (If you manually disconnected the sensor from the smart phone or tablet the previous time you used it, you will need to manually connect this time.)
- d) Wear the sensor.

7. Troubleshooting

Symptom	Possible Reasons	Solutions
Temperature data not displayed properly	1. Low battery	1. Restart the sensor 2. Replace the battery
Sensor is not switched on	1. Low or no battery power 2. The sensor might be damaged	1. Replace the battery 2. Contact customer service
Unusual temperature data	1. The sensor might not be worn correctly 2. The sensor might be damaged 3. Arm was not held tight against side for first 8 mins 4. Sensor has not been at room temperature for at least 5 minutes before using 5. The sensor was placed in a problematic place, or there are other body conditions causing interference.	1. Check wearing position of sensor 2. Contact customer service 3. Hold arm against side for 8 mins again 4. Keep the sensor at room temperature (without touching or heating it) for at least 5 minutes 5. Ask doctor for professional diagnosis.
Sensor is not connected with the smart phone or tablet	1. Bluetooth does not open on smart phone or tablet 2. Out of connection range 3. The sensor might not be worn correctly	1. Turn on the Bluetooth of the smart phone or tablet 2. Move the smart phone or tablet closer 3. Adjust wearing position of the sensor 4. Please reset the Bluetooth connection on the smart phone or tablet or restart the smart phone or tablet.

For more information, please visit: www.celsius.com, or send an email to support@celsius.com. We are looking forward to hearing from you.

8. Maintenance & Preservation

- Replace the battery when low battery is indicated, otherwise the sensor will not function as intended.
- Clean the surface of the sensor with medical antibacterial wipes when sharing devices between different users.
- Store at temperatures of 0°C ~ 50°C (32°F ~ 122°F), with humidity of 10% ~ 85% and barometric pressure of 86kPa ~ 106kPa.
- Treatment of the sensor and battery at the end of their life should comply with local laws and regulations.

Cautions: No extra calibration or daily maintenance is needed during the usage except the replacement of the battery.

9. Cleaning & Disinfection

The probe should be cleaned and disinfected.

Cleaning and Low-Level Disinfection

Clean the surface of the sensor with medical antibacterial wipes when sharing devices between different users.

WARNINGS

- Use of cleaning agents and disinfectants other than alcohol may damage the sensor and shorten product lifetime or cause safety risks.
- Do not soak the sensor in any liquid.
- Do not sterilise or use an autoclave on the sensor.
- If you notice any deterioration or damage, stop using the sensor immediately.

10. Important Precautions

- **Warning:** Any form of modification to this sensor is forbidden.
- Do not use sensor together with MRI or CT equipment.
- To avoid risk of explosion, do not use the sensor with flammable aesthetic gas.
- A qualified doctor should make the diagnosis of clinical manifestation and symptoms, with sensor as a subsidiary tool.
- Please check the sensor regularly to make sure that it is in firm contact with the skin. Otherwise data may be inaccurate.
- Soaking the sensor in liquid or disinfectant may lead to incorrect data or breakage.
- Sudden movement of the sensor may lead to incorrect data.
- Make sure to keep smart phone or tablet charged when using it to monitor body temperature for a long period of time.
- Do not apply pressure to sensor. If the cover is broken, stop using the sensor.
- Muscle and fat affect wireless transmission, so range of transmission decreases if an adult or obese child uses the sensor.
- Pay attention to operating temperature and humidity. Using the sensor in conditions that do not satisfy requirements may lead to measurement error.
- The sensor is for indoor use only.
- Please upgrade the application when necessary in the app Store/Google Play Store.
- If you encounter any incompatibility or conflicting issues with the app please contact us.
- The battery must be installed/replaced by an adult. Please put the battery and opening tool of the battery cover out of the reach of children.
- This product has not been aseptically treated.
- The battery should be removed from the compartment when not in use for greater than one month.

11. Technical Specifications

Product name Wearable Thermometer	Valid transmission distance Up to 5 metres	Smart phone or tablet iOS: Bluetooth v4.0 and iOS10.0 + Android: Bluetooth v4.0 and Android 5.0 +
Model WT705	Temperature unit °C or °F	For more information, please visit: www.celsius.com
Size 51.9mm × 31.6mm × 6.5mm	Measurement range 25 °C-45 °C or 77°F - 113°F	Battery life 120 days at 8 hours per day Note: frequent synchronisation of data may deplete power more quickly
Weight 6g (without battery)	Accuracy ±0.05°C (35°C-38.5°C) ±0.1°C (<35°C and >38.5°C) or ±0.09°F (95°F - 101.3°F) ±0.18°F (<94.9°F and >101.3°F)	Operating conditions Temperature: 5°C - 40°C or 41°F - 104°F Humidity: 15% - 85% Barometric pressure: 86kPa - 106kPa
Battery CR2025		

12. Functional Description

Body temperature monitoring

The sensor connects to a smart phone or tablet to monitor body temperature. It measures the temperature and sends it to the smart phone or tablet via Bluetooth. Real-time temperature can then be seen on the smart phone or tablet.

Smart temperature alert

The temperature reading becomes red with an audio notification on the smart phone or tablet when the temperature reaches the threshold. The audio notification can be turned on and off, and the threshold can be set manually.

Bluetooth disconnection alert

A dialogue box appears and an audio notification sounds on the smart phone or tablet when the Bluetooth connection has been lost for more than 5 minutes.

Temperature data storage

The sensor continues to measure and store body temperature independently if Bluetooth communication is lost during monitoring.

The sensor measures body temperature every 4 seconds and stores a maximum of 10 days of data. The stored data in the sensor is sent to the smart phone or tablet as soon as the connection is resumed. Uploading 24 hours of data takes about 1 minute.

Low voltage indication

This function requires the connection between the sensor and the smart phone or tablet. A pop-up window with alerts will appear on the smart phone or tablet when the sensor's battery level is low.

13. Definitions of Symbols

BF medical device	Read user manual before use	Serial number	Manufacturer
Recyclable	No littering	Lot Number	Manufacturing Date
Cautions! Please refer to the instruction for use.		ROHS Certified	
European Authorised Representative			

14. Disclaimer

This manual is written in accordance with available information and its contents are subject to change without notice.

Celsius™ has made every effort to guarantee the contents of this manual are accurate and reliable. However, the company does not assume liability for any loss or damage caused by omissions, inaccuracies, or typographical errors in this manual.

Where a software upgrade leads to discrepancies in this manual, the software shall prevail. When product improves or technology changes, you may visit the company technical support website for the relevant information.

The Bluetooth® word mark, figure mark, combination mark, and Bluetooth Smart and Bluetooth Smart Ready marks are all trademarks that are owned by the Bluetooth SIG and any use of such marks by Celsius™ is under license. Other trademarks and trade names belong to their respective owners.

15. Caution

This sensor complies with part 15 of the FCC Rules. Operation is subject to the following two conditions:

1. This sensor may not cause harmful interference.
2. This sensor must accept any interference received, including interference that may cause undesired operation.

Changes or modifications not expressly approved by the party responsible for compliance could void the user's authority to operate the equipment.

Note: This equipment has been tested and found to comply with the limits for a Class B digital sensor, pursuant to part 15 of the FCC Rules. These limits are designed to provide reasonable protection against harmful interference in a residential installation. This equipment generates, uses, and can radiate radio frequency energy

and, if not installed and used in accordance with the instructions, may cause harmful interference to radio communications. However, there is no guarantee that interference will not occur in a particular installation.

If this equipment does cause harmful interference to radio or television reception, which can be determined by turning the equipment off and on, the user is encouraged to try to correct the interference by one or more of the following measures:

- Reorient or relocate the receiving antenna.
- Increase the separation between the equipment and smart phone or tablet.
- Connect the equipment into an outlet on a circuit different from that to which the smart phone or tablet is connected.
- Consult the dealer for help.

16. Declaration

1. The EMC of the product meets the standard of IEC60601-1-2.
2. The material that comes in contact with skin is non-toxic, non-irritating, and up to standard of ISO10993-1, -5, -10.

17. Copyright Statement

© Smartr Health Limited. All rights reserved. Smartr Health Limited retains the final right to interpret and revise this handbook and this statement.

Copyright of this manual belongs to Smartr Health Limited. Without prior written permission, no company or individual is allowed to reproduce, copy, or translate this manual or any information contained therein.

Supplied by SMARTR Health Ltd,
Arquen House, 4-6 Spicer Street, St Albans AL3 4PQ

Railing Medical Company
FL4-E BLDG.8, Changliu Rd. 738 Machikou Town, Changping Dist. Beijing, China

Software manufactured by SMARTR Health Ltd
Arquen House, 4-6 Spicer Street, St Albans AL3 4PQ

MEQUIPEX E.U.
Feldstrasse 39/1/3, 4813 Altmuenster, Austria

CE 0482

18. Standard Warranty Information

The product is warranted from manufacturing defects for one year from date of retail purchase. This does not cover the damages or wear resulting from accident, misuse, abuse, commercial use, or unauthorised adjustment and repair. Please direct all returns to the place of the original purchase. Please retain your original receipt as you may be asked to provide a copy for proof of purchase. To find the customer information, please visit our company website at: www.celsius.com

19. Appendix

Reference from WebMD (www.webmd.com)

Comparison of temperatures in Celsius by method

Axillary/Forehead (°C/°F)	Oral (°C/°F)	Rectal/Ear (°C/°F)
36.9–37.4°C/98.4–99.3°F	37.5–37.7°C/99.5–99.9°F	38–38.3°C/100.4–101°F
37.5–38.4°C/99.4–101.1°F	37.8–38.5°C/100–101.5°F	38.4–39.1°C/101.1–102.4°F
38.5–38.9°C/101.2–102°F	38.6–39.1°C/101.6–102.4°F	39.2–39.7°C/102.5–103.5°F
39–39.5°C/102.1–103.1°F	39.2–39.7°C/102.5–103.5°F	39.8–40.3°C/103.6–104.6°F
39.6–40°C/103.2–104°F	39.8–40.3°C/103.6–104.6°F	40.4–40.9°C/104.7–105.6°F

20. Purchasing Record For Celsius™

Model Purchased:

Serial Number:

Date of Purchase:

Distributor Name:

Representative:

Phone Number:

Fax Number:

Email Address: