

This pattern contains hyperlinks. Click them for more details.



For more quilt making tutorials, [click here.](#)

Pattern 9 - Boho Dresden Plates



section 1



section 2

For both sections you will need:

Color A - (2) 12.5" squares

Color B - (2) 12.5" squares

**Color C - (1) 18.5x24.5" (c-1) rectangle
(1) 12.5x9.5" (c-2) rectangle**

(74) Dresden blades cut using included template A

(20) Dresden blades cut using template B

Optional

**1/4 yard of interfacing
crochet lace, doilies or other items
Additional fabric for centers.**

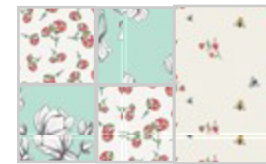
Read all instructions before beginning. Sew right sides together and use a 1/4" seam allowance unless otherwise instructed.

Section 1 background Assembly

1. Using A and B squares, layout in a 4-patch. Sew each row, then sew rows together.



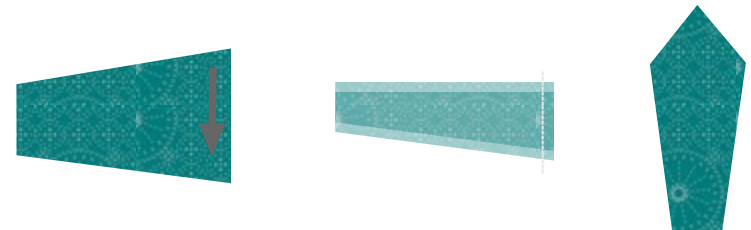
2. Sew section C-1 rectangle to you 4-patch unit.



Dresden Plates

1. Fold each Dresden blade long ways, right sides together, and sew the widest of the short ends.

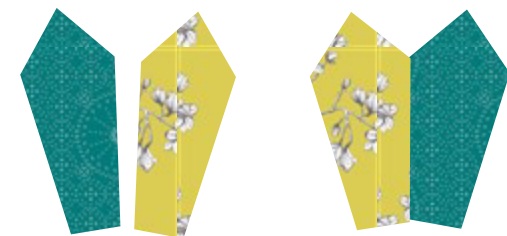
2. Turn blade right side out. Use a pointed (non-sharp) tool like scissors to push out blade point. Press.



3. Optional - if you are planning on leaving your Dresden plates without centers repeat step 2 with the opposite short end. If you are planning to add circles to finish your plate, you can skip this step.



4. Sew Dresden blades together. Start your stitch at the finished side of the blade. Sew in groups discussed on the next page.



You will make:

Full Dresden Plates - (2) Dresden plates featuring 20 blades each from Template A (these will come to a circle)

Full Dresden Plate - (1) Dresden plates featuring 20 blades from Template B (this will come to a circle)



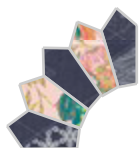
Half Dresden Plates - (2) Dresden plates featuring 10 blades each



Wonky Dresden Plate - (1) Dresden plate featuring 9 blades



Quarter Dresden Plate - (1) Dresden plate featuring 5 blades



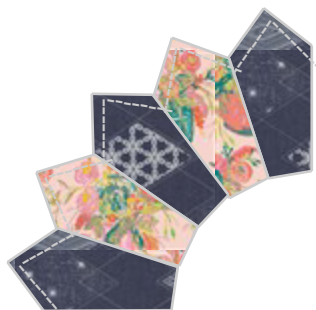
The Wonky Dresden Plate

1. Finish edges of the last blade on each side of this plate by folding 1/4" wrong sides together and pressing.



Section 1 & 2 Assembly

1. Lay Dresden plates on top of background as shown in both diagrams. Section 2 uses the Full Dresden Plate made with Template Bs. All other Dresden plates are part of Section 1.
2. Topstitch all pointed edges of dresden plates onto backgrounds.

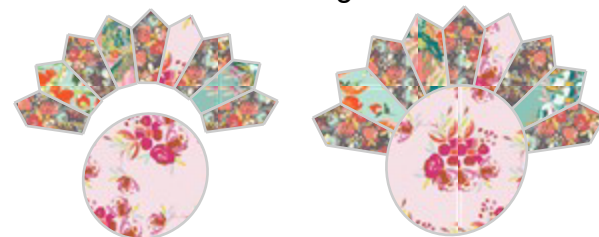


Finishing Wonky Dresden Plate

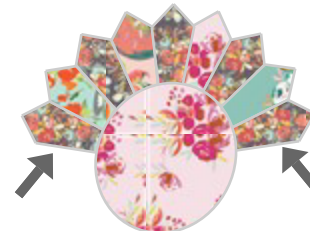
1. Find a circular object, such as a bowl or plate that fits nicely over the wonky dresden plate. Be sure that you can overlap the circular object onto the Dresden plate.

2. Fuse circle fabric onto interfacing following manufacturer's instructions. Trace your circle on to the back of the fused fabric. Cut out circle.

3. Place circle over unfinished edge of your Dresden plate. Use a decorative stitch to finish and sew together.



4. Top stitch previously folded edges.



Section 1 Placement Diagram



Section 2 Placement Diagram

Your options:

You can topstitch all circular centers of your Dresden plates if you had previously pressed them with a finished fold.

You can use materials such as doilies or crochet lace to top stitch on edge of fold.

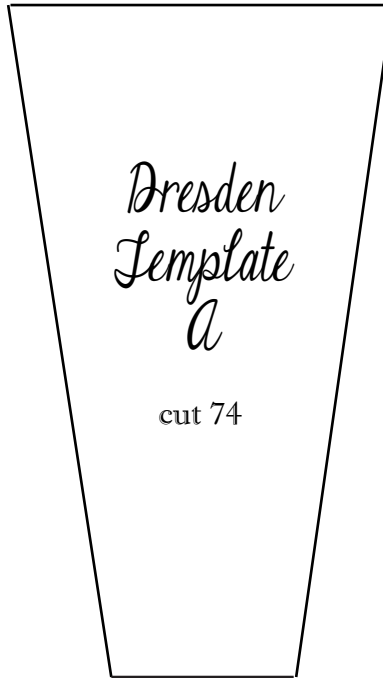
Leave your centers open or fill them with items that might add charm to your quilt.

If you chose to have finished pointed centers you will not have to add anything to your Dresden plates.

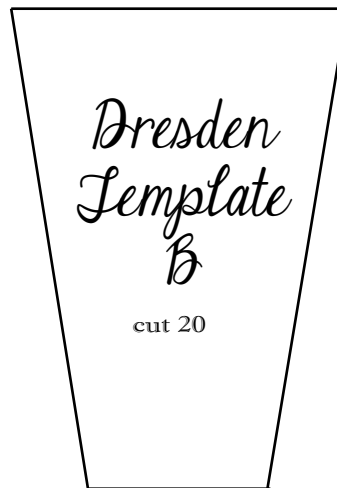


With crochet lace added to edges

measures 2" across



measures 1.75" across



Have a Dresden ruler?

If you prefer to use your Dresden ruler, Template A measures 3.5" tall and Template B measures 2.5" tall.

[Find a Dresden ruler here.](#)

Notes

