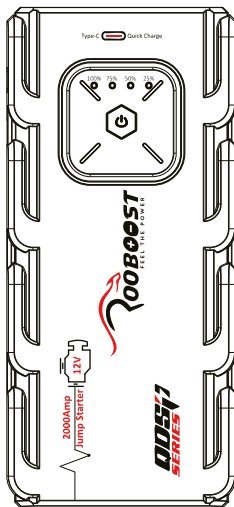




User Manual

Extreme Safe Jump Starter & Power Bank RB-2000



This user manual provides safety and operating instructions.
Please read this user manual thoroughly before using the product.

TABLE OF CONTENTS

Important Safety Instructions	4
Introduction & Features	5
Getting to Know Your Jump Starter	6
Operation & How to Use	7
Troubleshooting	11
Storage	12
Disposal	12
Warranty Information	13
Defective Products & Returns	14
Customer Support – Australia	14

PACKAGE CONTENTS

1 × RB-2000
1 × Smart Jumper Cable
1 × SAA Power Adapter
1 × USB Type-C Cable
1 × Cigarette Lighter Socket
1 × Handheld Protective Case
1 × User Manual
1 × Warranty Card

PRODUCT SPECIFICATIONS

Internal Battery	Lithium-ion
Capacity	20000 mAh (74 Wh)
Suitable for Vehicles	Up to 10.0 L Petrol and 8.0 L Diesel
Start Voltage	12 V
Start Current	1000 A
Peak Current	2000 A
Input/output (Type-C)	5 V / 3 A
USB Output	USB Quick Charge 5 V / 3 A, 9 V / 2 A, 12 V / 1.5 A
	USB 5 V / 2.1 A
DC Output	12-16.8 V / 10 A
Operating Temperature	-20 °C - 50 °C
Lifetime	1000 Cycles
Full Charging Time	4-5 hours *
Product Dimension	19.2 × 9 × 3.6 cm
Product Net Weight	0.6 kg

* The charging time will differ based on the discharge level, used power source and battery conditions.

THANK YOU FOR CHOOSING TO BUY A ROOBOOST JUMP STATER & POWER BANK

We are here to help you with any questions.

Customer Support – Australia

www.rooboost.com.au

support@rooboost.com.au

[@rooboost](https://www.instagram.com/rooboost)

IMPORTANT SAFETY INSTRUCTIONS

Please read all instructions before use to prevent the risk of explosion, injury, fire, electric shock or other damages.

Use your jump starter safely by following the instructions in this user manual.

- Use jump starter safely with great care.
- Use jump starter only for 12 V vehicles for emergency launch. DO NOT use for different voltage vehicles including aircraft and ships.
- DO NOT use jump starter if the cables or their terminals are damaged.
- DO NOT use jump starter as vehicle battery and as a battery charger.
- DO NOT jump start vehicle while jump starter is charging.
- DO NOT use jump starter in the event of bulges, leaks or strange smells coming from it.
- Only use with the original Rooboost jumper cables and power adapter to avoid possible damages.
- Make sure that the blue jumper connector of the jumper cable is fully inserted into jump start socket of the jump starter. Otherwise the blue jumper connector would melt.
- DO NOT connect two terminals of jumper clamp to each other.
- DO NOT let children, young inexperienced or people with reduced physical or mental capabilities to use jump starter.
- DO NOT expose jump starter to extreme heat or fire.
- DO NOT store jump starter in a place with direct sunlight and where the temperature may exceed 60 °C.
- ALWAYS charge jump starter at ambient temperatures in range of 0 °C to 50 °C.
- DO NOT charge jump starter immediately after using it to jump start a vehicle or while it is hot.
- DO NOT knock, toss or shake the jump starter and its accessories strongly.
- DO NOT use jump starter if it has been dropped, damaged, liquid leaks, dropped in water or not working properly.
- DO NOT expose jump starter to water or rain.
- DO NOT disassemble and crush the jump starter.
- DO NOT let jump starter to be used as a toy. Keep it away from children. It contains battery inside.
- DO NOT use jump starter in an explosive atmosphere with insect repellents, burning incense, toxic fumes, flammable dust or oxygen tank.
- DO NOT use jump starter near gas appliances, fire places, stoves, candles or heating devices.
- DO NOT use a defective jump starter or attempt to repair/adjust any electrical or mechanical functions, this may cause danger and void the warranty.
- ALWAYS remove personal metal objects such as rings, bracelets and necklaces while using jump starter.
- DO NOT use jump starter for commercial purposes.
- This jump starter contains lithium-ion battery. At the end of its lifetime, dispose it as instructed in DISPOSAL section of this user manual.

KEEP THESE INSTRUCTIONS IN A SAFE PLACE.

INTRODUCTION & FEATURES

JUMP STARTER

The Rooboost RB-2000 is lithium-ion jump starter. It is suitable for up to 10.0 L petrol and 8.0 L diesel vehicles including cars, boats, motorcycles, lawn mowers, RVs, tractors, trucks and more. The jump starter features spark proof technology and the smart jumper cable reverse polarity protection. The RB-2000 can instantly jump start most single 12 V lead-acid batteries.

SMART JUMPER CABLE

The RB-2000 contains smart jumper cable with digital display to show normal/ abnormal status digitally. The smart jumper cable contains built-in voltmeter that reads the voltage of the vehicle's battery for enhanced diagnostics and troubleshooting. Knowing the vehicle battery voltage can play an important role in understanding the problem. If the battery voltage is above 12 V and the vehicle doesn't start, the problem might not be the battery issue. The vehicle might not need jump start.

POWER BANK

The RB-2000 is equipped with battery pack having a capacity of 20000 mAh (74 Wh). It contains USB, Quick Charge USB, USB Type-C and DC outputs.

LED LIGHT

The RB-2000 contains LED light that includes steady torch, SOS signal flash and strobe modes, which makes it the ultimate emergency tool.

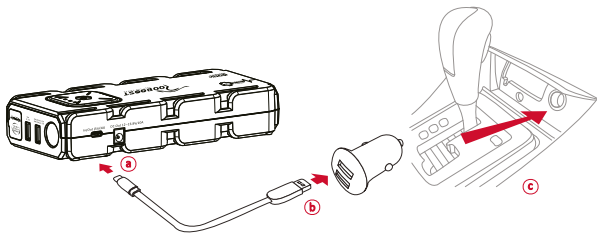
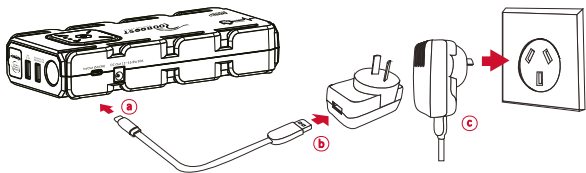
QDSP TECHNOLOGY

Quick Discharge Start Power (QSDP) is a unique jump-starting patented technology that is used in RB-2000. It has enhanced jump-starting current compared to the none-QDSP type with the same capacity. Its technology is based on new 3rd generation jump starters which the performance in low temperature circumstances (up to -20 °C) is greatly improved. Additionally, QDSP RB-2000 is equipped with smart jumper cable, QC3.0 and USB Type-C fast charging features.

OPERATION & HOW TO USE

CHARGING THE RB-2000

- The RB-2000 comes partially pre-charged and needs to be fully charged before use.
- It will take 4-5 hours to full charge the RB-2000. The charging time will differ based on the discharge level, used power source and battery conditions.
- Follow the below steps to charge the RB-2000.
 - a. Connect Type-C connector of charging cable into jump starter input port.
 - b. Connect USB connector of charging cable to power adapter or cigarette lighter adapter (5 V / 3 A).
 - c. Plug power adapter into a power source or insert cigarette lighter adapter into a cigarette lighter socket.



- It is recommended to charge the RB-2000 at least once 3 months in order to extend its battery life.
- DO NOT charge RB-2000 immediately after using it to jump start a vehicle or while it is hot.

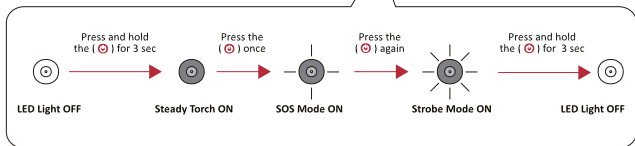
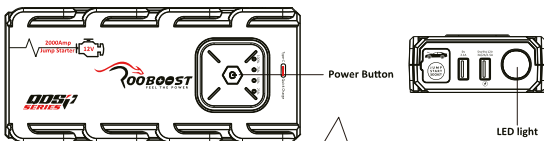
POWER BANK FUNCTION

- The RB-2000 can be used as a power bank through below 4 outputs. Always short press the (⏻) to turn on the output functions.
 - Output1: USB 5 V / 2.1 A
 - Output2: USB Quick Charge 5 V / 3 A, 9 V / 2 A, 12 V / 1.5 A
 - Output3: USB Type-C 5 V / 3 A
 - Output4: DC 12-16.8 V / 10 A

LED LIGHT FUNCTION

The RB-2000 contains LED light that includes steady torch, SOS signal flash and strobe modes.

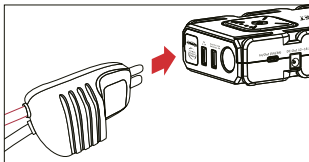
- **Steady Torch:** Press and hold the (⏻) for 3 seconds to turn ON the steady torch.
- **SOS Mode:** Press the (⏻) again to cycle to SOS mode.
- **Strobe Mode:** Press the (⏻) again to cycle to strobe mode.
- Press and hold the (⏻) for 3 seconds to turn OFF the LED light.



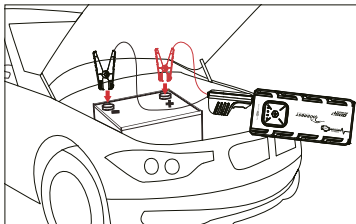
HOW TO JUMP START A VEHICLE

- Turn ON the RB-2000 by pressing its (⏻). Make sure it is over 25% charged.
- Make sure all of the vehicle's power loads (headlights, air conditioning, radio, etc.) are turned off before attempting to jump start the vehicle.
- Ensure that the battery is 12 V lead-acid before connecting the jump starter to the battery. The RB-2000 is not suitable for any other type of battery.
- Identify the correct polarity of the battery terminals on the vehicle battery.
- Ensure to not make any connections to carburettor, fuel lines or thin-sheet metal parts.
- Follow the below steps carefully to jump start your vehicle.

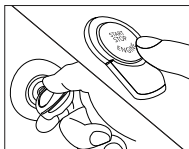
1. Connect the jumper connector (blue) into the RB-2000 jump start socket. Wait for jumper cable display to go into stand-by mode. When in stand-by status, (⚡) is ON and flashing in a circular motion, it shows that the RB-2000 is ready for jump starting.



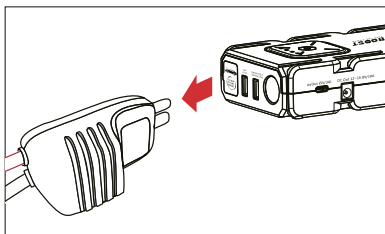
2. Connect the jumper clamps to the vehicle battery terminals appropriately to avoid reverse polarity connection. Ensure that the battery terminals are clean. Connect positive (red) jumper clamp to the positive battery terminal and negative (black) jumper clamp to the negative battery terminal. If the jumper cable display shows voltage without any warning or alarm beeps, it indicates that the vehicle is ready for jump starting.



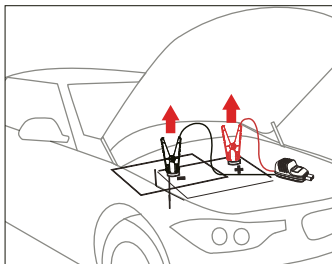
3. Start your vehicle engine. If the vehicle does not start within 3 seconds, stop cranking and wait at least 30 seconds and try again. Do not attempt more than 5 consecutive jump starts. Allow the RB-2000 to reset for 15 minutes before attempting to jump start the vehicle again.



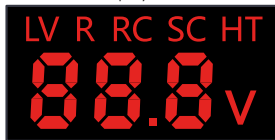
4. Once you have successfully started your vehicle, unplug the jumper connector from the RB-2000 within 30 seconds.



5. Disconnect the jumper clamps from the vehicle battery terminals carefully.



Display View



Smart Jumper Cable Normal/Abnormal Display Status

[Table 1.1]

LED Display	Buzzer Warning	Explanation	Reason/Solution
	1. / 2. / 3. Buzzer is Long	1. Over-limit Protection 2. Over Crank Attempt Protection 3. Relay Connection Faulty Protection	1. Jump starter voltage is low. Use bigger capacity of jump starter. 2. Disconnect smart jumper cable from jump starter and vehicle battery, then re-connect appropriately. 3. Smart jumper cable is damaged, stop using it and carefully store in a safe place. Contact Rooboost customer support.
	One beep per second	Low Voltage Protection 14.0 ± 0.5 V	The jump starter voltage is low. Charge the jump starter at least more than 25%.
	One beep per second	1. Reverse Polarity Protection 2. Short Circuit Protection	1. Reverse the battery connections. Ensure that the jumper clamps are connected correctly to the vehicle battery terminals. 2. Cables aren't connected properly. Disconnect all connections and try to connect again properly.
	One beep per second	Reverse Charging Protection	Disconnect the jump starter within 30 seconds after successfully jump start.
	One beep per second	Jump Starter Overheat Protection	The jump starter internal battery is too hot. Allow the jump starter to cool in a cooler environment.
	Buzzer is long	Over Voltage Protection 17.5 ± 0.5 V	Jump starter is over voltage or damaged. Stop using it and carefully store in a safe place. Contact Rooboost customer support.

Problem	Possible Reason/Solution
When the device is connected to DC output of the power bank for charging, the power bank (Jump starter) automatically turns off after few seconds.	The device rating is less than 500 mA, so the power bank cannot read the input device and turns off automatically. The minimum rating for a device to be charged is 500 mA.

STORAGE



- If not using the 2000 for an extended period of time, it is recommended to pack it safely and store in a cool dry place to avoid moisture and overheat damages.
- It is recommended to charge the RB-2000 at least once in three months in order to extend its battery life.
- DO NOT store the jump starter in a place with direct sunlight and where the temperature may exceed 60 °C.

DISPOSAL



To prevent possible harm to the environment or human health from uncontrolled waste disposal, separate the unneeded jump starter and its related accessories from other types of wastes.

Ask your local council where to dispose of your jump starter and its related accessories. You should not throw your jump starter and its related accessories away with the daily normal household waste.

WARRANTY INFORMATION

Rooboost jump starters are designed and manufactured to the highest quality standards. Your jump starter is covered for 2-year warranty, which include 1-year standard warranty and 1-additional year, from the date of original purchase.

Register for 1-additional year warranty and get more from your purchase.

Standard warranty period	1 Year
Additional warranty	Extend your warranty for 1-additional year. Simply register on to rooboost.com.au/warranty within the first 14 days of your purchase.
Record your order details here. This will help if you have any warranty questions in the future.	
Product name	
Model number	
Product SN	
Date of original purchase	
Order number	

TERMS AND CONDITIONS

In addition to your rights under the Rooboost warranty, you are also covered by guarantees under Australian Consumer Law. The Rooboost warranty is only available in Australia.

In Australia our goods come with guarantees that cannot be excluded under the Australian Consumer Law. You are entitled to a replacement or refund for a major failure and compensation for any other reasonably foreseeable loss or damage. You are also entitled to have the goods repaired or replaced if the goods fail to be of acceptable quality and the failure does not amount to a major failure.

What is Covered:

- The repair or replacement of your Rooboost jump starter (at Rooboost's discretion) if the product is found to be defective due to faulty manufacture. Rooboost reserves the right to determine if the fault requires a replacement or repair.
- Packaging and instructions of a faulty jump starter may also be replaced if damaged.
- This warranty is valid for using your jump starter within Australia.
- This warranty is valid for personal use only.
- This warranty is limited to 2-year including 1-year standard and 1-additional year (to be registered within 2-week from the data of original purchase).

What is Not Covered:

- Using your jump starter for commercial purposes or anything other than normal domestic use.
- Using your jump starter outside of Australia.
- Accidental damage or faults caused by neglect, misuse, vandalism and abuse.
- Damage or faults caused by not following the instructions in this user manual.
- Unsupervised use by children under the age of 18.
- Repairs or alterations carried out by parties other than Rooboost or an authorised agent.
- All other conditions that are not covered by Rooboost warranty as listed in the "What is Covered" section.

This warranty is not transferrable.

Rooboost is not responsible or liable for any damages, losses or inconveniences caused by product failure or accidental damage or faults caused by not following the instructions or safety warnings contained in this user manual.

Please email at support@rooboost.com.au with any further inquiries about Rooboost warranty or to ask about making a warranty claim. You must contact us within your warranty period for your claim to be eligible.

DEFECTIVE PRODUCTS & RETURNS

Once your product proved as a defective within the specified warranty period, stop using it and contact customer support at support@rooboost.com.au with your order number.

CUSTOMER SUPPORT - AUSTRALIA

Feel free to contact our helpful customer support team with any questions or inquiries regarding your product.
Your satisfaction is our priority.

Customer Support:

Ausbrilliant Brands.

PO Box 2, Ermington 1700, NSW Australia

www.rooboost.com.au

Support@rooboost.com.au

Please provide your order number when you contact customer support.

