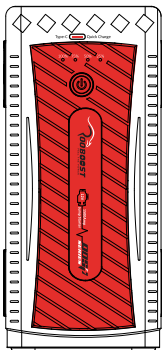




User Manual

Ultra Safe Jump Starter & Power Bank RB-1500



This user manual provides safety and operating instructions.
Please read this user manual thoroughly before using the product.

TABLE OF CONTENTS

| | |
|-----------------------------------|----|
| Important Safety Instructions | 4 |
| Introduction & Features | 5 |
| Getting to Know Your Jump Starter | 6 |
| Operation & How to Use | 7 |
| Troubleshooting | 11 |
| Storage, Disposal | 12 |
| Warranty Information | 13 |
| Defective Products & Returns | 14 |
| Customer Support – Australia | 14 |

PACKAGE CONTENTS

| |
|------------------------------|
| 1 x RB-1500 |
| 1 x Smart Jumper Cable |
| 1 x SAA Power Adapter |
| 1 x USB Type-C Cable |
| 1 x Cigarette Lighter Socket |
| 1 x Handheld Protective Case |
| 1 x User Manual |
| 1 x Warranty Card |

PRODUCT SPECIFICATIONS

| | |
|-----------------------|--|
| Internal Battery | Lithium Ion |
| Capacity | 16000mAh (59.2Wh) |
| Suitable for Vehicles | Up to 7.0L Petrol and 5.0L Diesel |
| Start Voltage | 12V |
| Start Current | 750A |
| Peak Current | 1500A |
| Input/output (Type-C) | 5V/3A |
| USB Output | USB 5V/2.1A USB Quick Charge 5V/3A, 9V/2A, 12V/1.5A |
| DC Output | 12~16.8V/10A |
| Operating Temperature | -20°C ~ 50°C |
| Lifetime | 1000 Cycles |
| Full Charging Time | 3-4 hours [^] |
| Product Dimension | 19.4 x 9.0 x 3.2 cm |
| Product Net Weight | 0.55 kg |

[^] The charging time will differ based on the discharge level, used power source and battery conditions.

THANK YOU FOR CHOOSING TO BUY A ROOBOOST JUMP STARTER & POWER BANK

We are here to help you with any questions.

Customer Support – Australia

🌐 www.rooboot.com.au

✉ support@rooboot.com.au

📱 @rooboot

IMPORTANT SAFETY INSTRUCTIONS

Please read all instructions before use to prevent the risk of explosion, injury, fire, electric shock or damage.

Use your jump starter safely by following the instructions in this user manual.

- Use the appliance safely with great care.
- Use the appliance only for 12V vehicles for emergency launch. DO NOT use for different voltage vehicles including aircraft and ships.
- DO NOT use the appliance if the cables or their terminals are damaged.
- DO NOT use the appliance as vehicle battery and as a battery charger.
- DO NOT jump start vehicle while jump starter is charging.
- DO NOT use the appliance in the event of bulges, leaks or strange smells coming from it.
- Only use with original Rooboost jumper cables to avoid possible damages.
- Make sure that the blue jumper connector of the jumper cable is fully inserted into jump start socket of the jump starter. Otherwise the blue jumper connector would melt.
- DO NOT connect two terminals of jumper clamp to each other.
- DO NOT let children, young inexperienced or people with reduced physical or mental capabilities to use the appliance.
- DO NOT expose the appliance to extreme heat or fire.
- DO NOT store the appliance in a place with direct sunlight and where the temperature may exceed 60°C.
- ALWAYS charge the appliance at ambient temperatures in range of 0°C to 50°C.
- DO NOT charge the appliance immediately after using it to jump start a vehicle or while it is hot.
- DO NOT knock, toss or shake the appliance and its accessories strongly.
- DO NOT use the appliance if it has been dropped, damaged, liquid leaks, dropped in water or not working properly.
- DO NOT expose the appliance to water or rain.
- DO NOT disassemble and crush the appliance.
- DO NOT let the appliance to be used as a toy. Keep it away from children. It contains battery inside.
- DO NOT use the appliance in an explosive atmosphere with insect repellents, burning incense, toxic fumes, flammable dust or oxygen tank.
- DO NOT use the appliance near gas appliances, fire places, stoves, candles or heating devices.
- DO NOT use a defective appliance or attempt to repair/adjust any electrical or mechanical functions, this may cause danger and void the warranty.
- ALWAYS remove personal metal objects such as rings, bracelets and necklaces while using jump starter.
- DO NOT use the appliance for commercial purposes.
- This appliance contains lithium-ion battery. At the end of its lifetime, dispose it as instructed in DISPOSAL section of this user manual.

KEEP THESE INSTRUCTIONS IN A SAFE PLACE.

INTRODUCTION & FEATURES

JUMP STARTER

The Rooboost RB-1500 is lithium-ion jump starter. It is suitable for up to 7.0L petrol and 5.0L diesel vehicles including cars, boats, motorcycles, lawn mowers, RVs, tractors, trucks and more. The jump starter features spark proof technology and the smart jumper cable reserves polarity protection. The RB-1500 can instantly jump start most single 12V lead-acid batteries.

SMART JUMPER CABLE

The RB-1500 contains smart jumper cable with digital display to show normal/abnormal status digitally. The smart jumper cable contains built-in voltmeter that reads the voltage of the vehicle's battery for enhanced diagnostics and troubleshooting. Knowing the vehicle battery voltage can play an important role in understanding the problem. If the battery voltage is above 12V and the vehicle doesn't start, the problem might not be the battery issue. The vehicle might not need jump start.

POWER BANK

The RB-1500 is equipped with battery pack having a capacity of 16000mAh (59.2Wh). It contains USB, Quick Charge USB, USB Type-C and DC outputs.

LED LIGHT

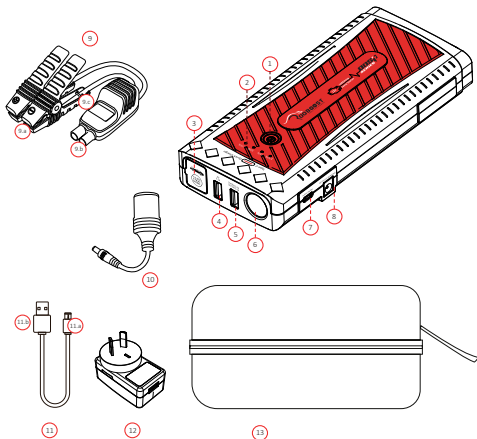
The RB-1500 contains LED light that includes steady torch, SOS signal flash and strobe modes, which makes it the ultimate emergency tool.

QDSP TECHNOLOGY

Quick Discharge Start Power is a unique jump-starting patented technology that is used in RB-1500. It has enhanced jump-starting current compared to the non-QDSP type with the same capacity. In low temperature circumstances (up to -20°C), the performance is greatly improved. Additionally, QDSP RB-1500 is equipped with smart jumper cable, QC3.0 and USB Type-C fast charging features.

GETTING TO KNOW YOUR JUMP STARTER

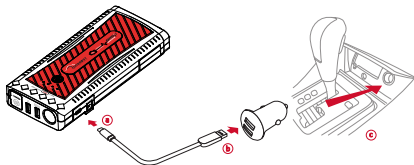
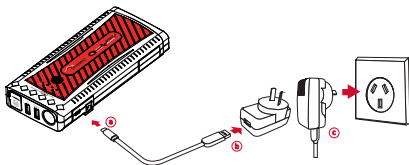
1. Power Button
2. Battery Capacity Indicators
3. Jump Start Socket
4. Output1: USB 5V/2.1A
5. Output2: USB Quick Charge 5V/3A, 9V/2A, 12V/1.5A
6. LED Light: Steady Torch, SOS Signal Flash, Strobe
7. Input/Output3: USB Type-C 5V/3A
8. Output4: DC 12~16.8V/10A
9. Smart Jumper Cable
 - a. Jumper Clamp
 - b. Jumper Connector
 - c. Jumper Cable Display
10. Cigarette Lighter Socket
11. USB Type-C Charging Cable
 - a. Type-C Connector
 - b. USB Connector
12. SAA Power Adapter
13. Handheld Protective Case



OPERATION & HOW TO USE

CHARGING THE RB-1500

- The RB-1500 comes partially pre-charged and needs to be fully charged before use.
- It will take 3-4 hours to full charge the RB-1500. The charging time will differ based on the discharge level, used power source and battery conditions.
- Follow the bellow steps to charge the RB-1500.
 - a. Connect Type-C connector of charging cable into jump starter input port.
 - b. Connect USB connector of charging cable to power adapter or cigarette lighter adapter (5V/3A).
 - c. Plug power adapter into a power source or insert cigarette lighter adapter into a cigarette lighter socket.



- It is recommended to charge the RB-1500 at least once a month in order to extend its battery life.
- DO NOT charge RB-1500 immediately after using it to jump start a vehicle or while it is hot.

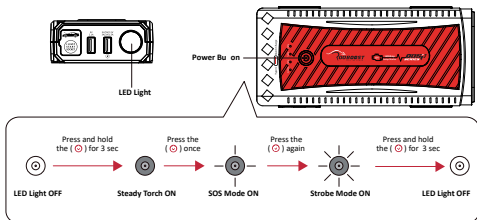
POWER BANK FUNCTION

- The RB-1500 can be used as a power bank through bellow 4 outputs. Always short press the (⊕) to turn on the output functions.
 - Output1: USB 5V/2.1A
 - Output2: USB Quick Charge 5V/3A, 9V/2A, 12V/1.5A
 - Output3: USB Type-C 5V/3A
 - Output4: DC 12~16.8V/10A


LED LIGHT FUNCTION

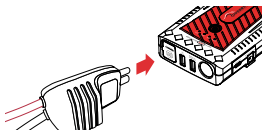
The RB-1500 contains LED light that includes steady torch, SOS signal flash and strobe modes.

- **Steady Torch:** Press and hold the (⊕) for 3 seconds to turn ON the steady torch.
- **SOS Mode:** Press the (⊕) again to cycle to SOS mode.
- **Strobe Mode:** Press the (⊕) again to cycle to strobe mode.
- Press and hold the (⊕) for 3 seconds to turn OFF the LED light.

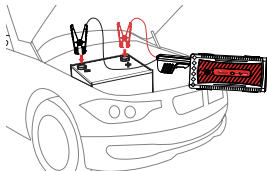


HOW TO JUMP START A VEHICLE

- Turn ON the RB-1500 by pressing its power button. Make sure it is over 25% charged.
 - Make sure all of the vehicle's power loads (headlights, air conditioning, radio, etc.) are turned OFF before attempting to jump start the vehicle.
 - Ensure that the battery is 12V lead-acid before connecting the jump starter to the battery. The RB-1500 is not suitable for any other type of battery.
 - Identify the correct polarity of the battery terminals on the vehicle battery.
 - Ensure to not make any connections to carburettor, fuel lines or thin-sheet metal parts.
 - Follow the below steps carefully to jump start your vehicle.
1. Connect the jumper connector (blue) into the RB-1500 jump start socket. Wait for jumper cable display to go into stand-by mode. When in stand-by status, () is ON and flashing in a circular motion, it shows that the RB-1500 is ready for jump starting.



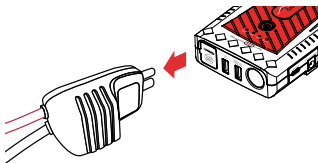
2. Connect the jumper clamps to the vehicle battery terminals appropriately to avoid reverse polarity connection. Ensure that the battery terminals are clean. Connect positive (red) jumper clamp to the positive battery terminal and negative (black) jumper clamp to the negative battery terminal. If the jumper cable display shows voltage without any warning or alarm beeps, it indicates that the vehicle is ready for jump starting.



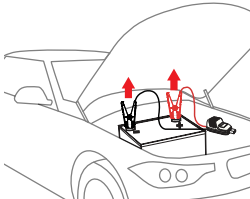
3. Start your vehicle engine. If the vehicle does not start within 3 seconds, stop cranking and wait at least 30 seconds and try again. Do not attempt more than 5 consecutive jump starts. Allow the RB-1500 to reset for 15 minutes before attempting to jump start the vehicle again.



4. Once you have successfully started your vehicle, unplug the jumper connector from the RB-1500 within 30 seconds.



5. Disconnect the jumper clamps from the vehicle battery terminals carefully.



Display View



Smart Jumper Cable Normal/Abnormal Display Status

[Table 1.1]

| LED Display | Buzzer Warning | Explanation | Reason/Solution |
|-------------|---------------------|---|---|
| | 1. / | 1. Over-limit Protection | 1. Jump starter voltage is low. Use bigger capacity of jump starter. |
| | 2. / | 2. Over Crank Attempt Protection | 2. Disconnect smart jumper cable from jump starter and vehicle battery, then re-connect appropriately. |
| | 3. Buzzer is Long | 3. Relay Connection Faulty Protection | 3. Smart jumper cable is damaged, stop using it and carefully store in a safe place. Contact Rooboost customer support. |
| | One beep per second | Low Voltage Protection 14.0±0.5V | The jump starter voltage is low. Charge the jump starter at least more than 25%. |
| | One beep per second | 1. Reverse Polarity Protection 2. Short Circuit Protection | 1. Reverse the battery connections. Ensure that the jumper clamps are connected correctly to the vehicle battery terminals. 2. Cables aren't connected properly. Disconnect all connections and try to connect again properly. |
| | One beep per second | Reverse Charging Protection | Disconnect the jump starter within 30 seconds after successfully jump start. |
| | One beep per second | Jump Starter Overheat Protection | The jump starter internal battery is too hot. Allow the jump starter to cool in a cooler environment. |
| | Buzzer is long | Over Voltage Protection 17.5±0.5V | Jump starter is over voltage or damaged. Stop using it and carefully store in a safe place. Contact Rooboost customer support. |

STORAGE

- If not using the RB-1500 for an extended period of time, it is recommended to pack it safely and store in a cool dry place to avoid moisture and overheat damages.
- It is recommended to charge the RB-1500 at least once a month in order to extend its battery life.
- DO NOT store the jump starter in a place with direct sunlight and where the temperature may exceed 60°C.

DISPOSAL



To prevent possible harm to the environment or human health from uncontrolled waste disposal, separate the unneeded jump starter and its related accessories from other types of wastes. Ask your local council where to dispose of your jump starter and its related accessories. You should not throw your jump starter and its related accessories away with the daily normal household waste.

WARRANTY INFORMATION

Roobost jump starters are designed and manufactured to the highest quality standards. Your jump starter is covered for 2 year warranty, which includes 1-year standard warranty and 1-addtional year, from the date of original purchase.

| Register for 1-addtional year warranty & get more from your purchase. | |
|--|---|
| Standard warranty period | 1 Year |
| Additional warranty | Extend your warranty for 1-addtional year. Simply register on to roobost.com.au/warranty within the first 14 days of your purchase. |
| Record your order details here. This will help if you have any warranty questions in the future. | |
| Product name | |
| Model number | |
| Product SN | |
| Date of original purchase | |
| Order number | |

TERMS AND CONDITIONS

In addition to your rights under the Roobost warranty, you are also covered by guarantees under Australian Consumer Law. The Roobost warranty is only available in Australia.

In Australia our goods come with guarantees that cannot be excluded under the Australian Consumer Law. You are entitled to a replacement or refund for a major failure and compensation for any other reasonably foreseeable loss or damage. You are also entitled to have the goods repaired or replaced if the goods fail to be of acceptable quality and the failure does not amount to a major failure.

What is Covered:

- The repair or replacement of your Roobost jump starter (at Roobost's discretion) if the product is found to be defective due to faulty manufacture. Roobost reserves the right to determine if the fault requires a replacement or repair.
- Packaging and instructions of a faulty jump starter may also be replaced if damaged.
- This warranty is valid for using your jump starter within Australia.
- This warranty is valid for personal use only.
- Warranties are limited to 2 year (1-year standard and 1-addtional year) from the date of original purchase.

What is Not Covered:

- Using your jump starter for commercial purposes or anything other than normal domestic use.
- Using your jump starter outside of Australia.
- Accidental damage or faults caused by neglect, misuse, vandalism and abuse.
- Damage or faults caused by not following the instructions in this user manual.
- Unsupervised use by children under the age of 18.
- Repairs or alterations carried out by parties other than Rooboost or an authorised agent.
- All other conditions that are not covered by Rooboost warranty as listed in the “What is Covered” section.

This warranty is not transferrable.

Rooboost is not responsible or liable for any damages, losses or inconveniences caused by product failure or accidental damage or faults caused by not following the instructions or safety warnings contained in this user manual.

Please email at support@rooboost.com.au with any further inquiries about Rooboost warranty or to ask about making a warranty claim. You must contact us within your warranty period for your claim to be eligible.

DEFECTIVE PRODUCTS & RETURNS

Once your product proved as a defective within the specified warranty period, stop using it and contact customer support at support@rooboost.com.au with your order number.

CUSTOMER SUPPORT - AUSTRALIA

Please contact customer support with any questions regarding your product. Feel free to contact our helpful customer support team. Your satisfaction is our priority.

Customer Support:

Yasin Pty Ltd.

PO Box 2, Ermington 1700, NSW Australia

www.rooboost.com.au

Support@rooboost.com.au

Please provide your order number when you contact customer support.



www.roobost.com.au

Questions or Concerns?

support@roobost.com.au

V1.0720