



Beinn Owner's Manual

ISLABIKES
www.islabikes.co.uk

Setting up your Islabike

You can view our “how to set up your Beinn” video guides on our website:

<http://www.islabikes.co.uk/info-hub/islabike-setup-video-guides>

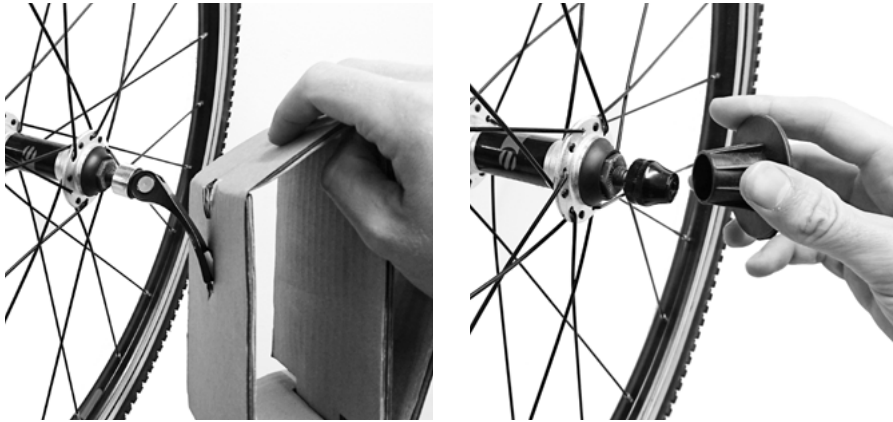
Or alternatively follow the steps in this booklet...



1. Brake levers
2. Brake pads
3. Saddle
4. Seatpost
5. Seatpost clamp
6. Saddle clamp
7. Stem
8. Stem bolts
9. Headset
10. Headset spacers
11. Headset adjuster bolt
12. Handlebars
13. Grip shift
14. Rim
15. Spokes
16. Tyres
17. Chain
18. Rear derailleur
19. Cassette
20. Frame
21. Fork
22. Cranks
23. Pedals

Step 1 of 6

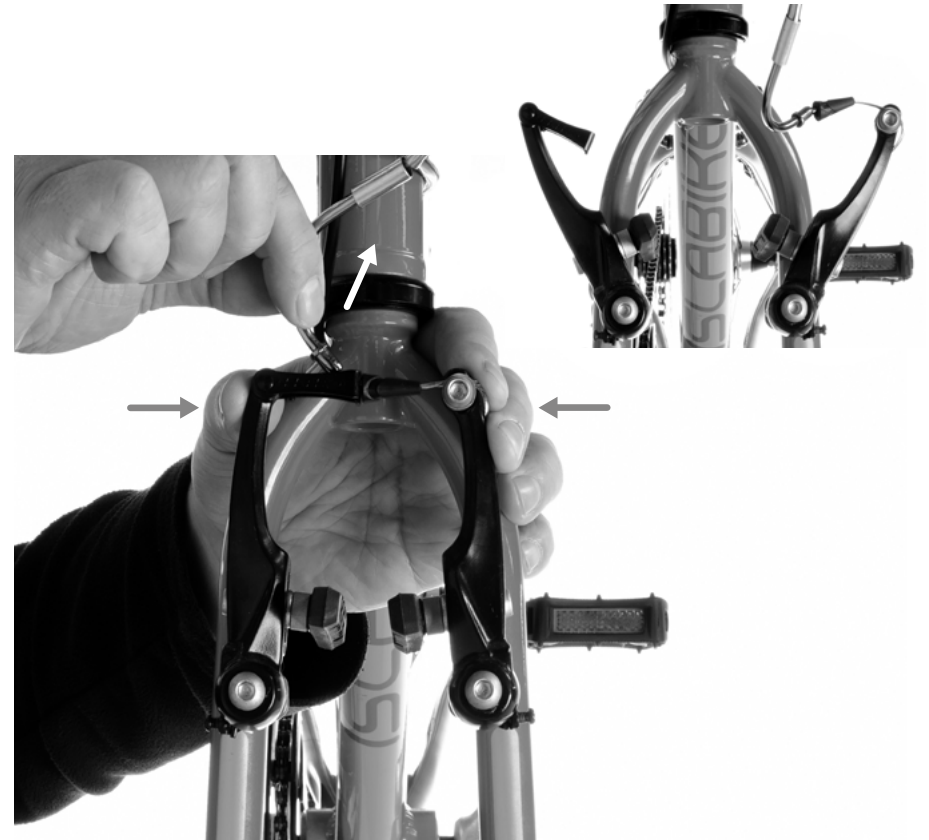
Remove front wheel packaging and unhook the front brake



1. Remove front wheel protection packaging.

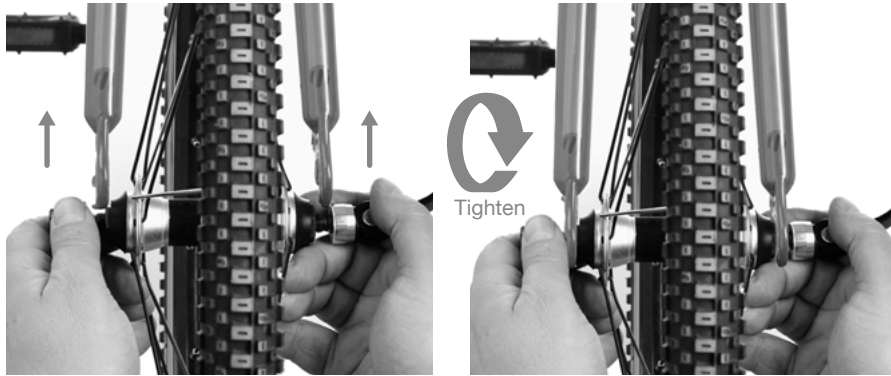


2. Remove fork plastic protection packaging.



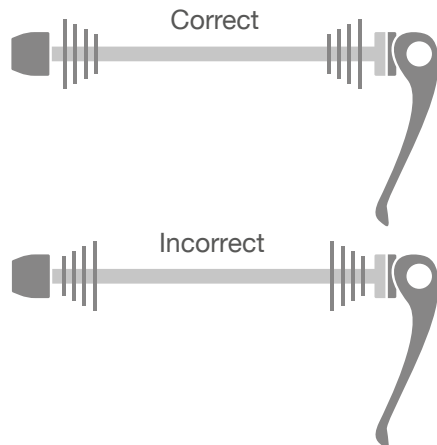
3. Unhook front brake hinge.

Securing front wheel



1. Put front wheel into the fork. Ensure quick release (QR) lever is **not** on gear side. Check this matches rear.
2. Hold QR lever in fully **'open'** position and turn nut clockwise. **Do not fully tighten nut.**

⚠ Ensure QR skewer springs orientation is correct.



3. Clamp the QR lever to fully **'closed'** position towards rear of bike.

⚠ The QR lever should start to feel tight at 90 degrees as you close – if it is too tight or too loose can adjust by holding lever **'open'** again and turning nut.

⚠ Check front wheel is correctly installed by lifting the handlebar and holding the wheel at the fork. Firmly push from side to side. If there is no movement the wheel is fitted correctly.

Step 3 of 6

Re-connecting front brake



1. Re-connect front brake by hooking the silver metal cable hose (noodle) back into the hinge. Check this matches the rear.
2. Pull the right brake lever on to check brake works correctly. Both brake blocks should contact the rim.

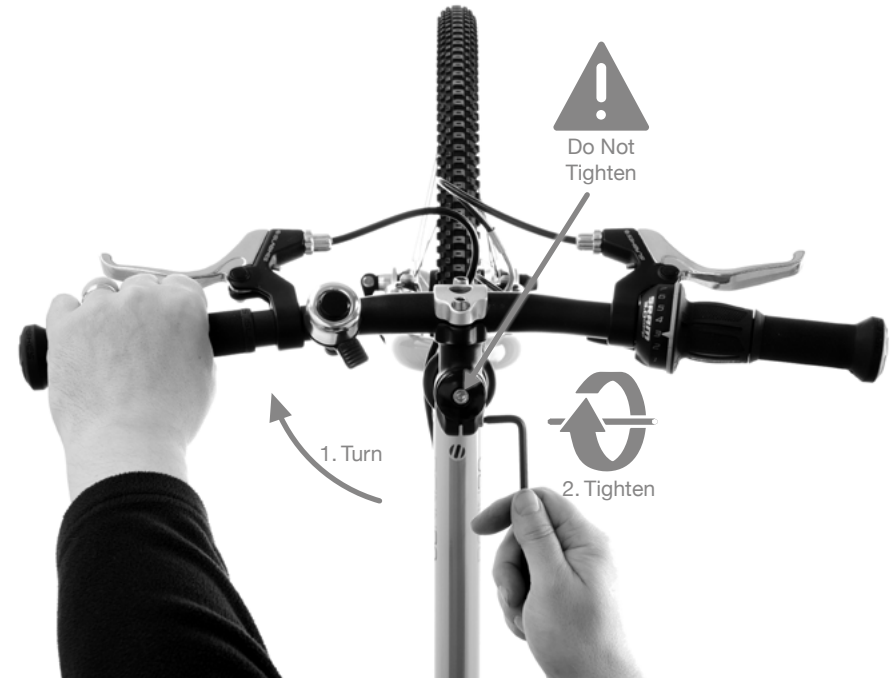


Check front brake operates correctly before allowing child to ride. If unsure contact our technical support team on +44 (0) 1584 708 383 or email techsupport@islabikes.co.uk.

Step 4 of 6

Handlebar set up

(Only required if mudguards are fitted)



1. Turn handlebars clockwise and align with front wheel
2. Tighten stem clamp bolt max. 7Nm



Failure to correctly tighten stem clamp bolt may result in serious injury or death. If in doubt, please consult our technical support team on +44 (0) 1584 708 383 or email techsupport@islabikes.co.uk.

Step 5 of 6

Pedal installation

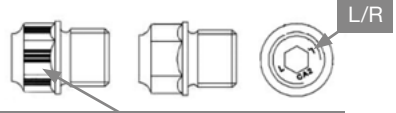


All pedals are supplied in pairs with a specific left and right pedal. This is to prevent the pedals from undoing as you turn the cranks with your feet.



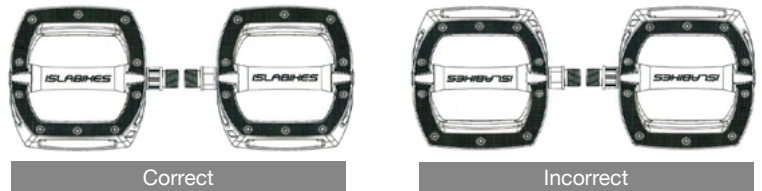
Please ensure that you have identified the left and right pedal before installation to avoid damaging the crank arm.

Many of our pedals have the following features on the pedal axle to help you identify the left and right pedals:



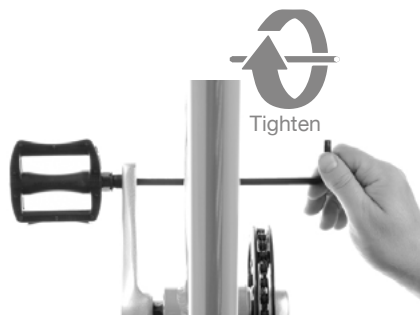
LH pedal has line marking on axle.

If these features are missing, another tip is to check the Islabikes logo. When standing at the back of the bike looking towards the front, the Islabikes text on the pedal should be in the correct orientation to read:



Correct Incorrect

1. Left pedal



1. Left pedal – rotate pedal axle **clockwise** towards front of bike
 2. Right pedal – rotate axle **anti-clockwise** towards front of bike
- Tighten max. 30Nm**

2. Right pedal



Step 6 of 6

Adjust saddle height



1. Loosen seatpost clamp
2. Move to desired height
3. Tighten clockwise max. 5Nm



Seatposts are clearly marked with minimum insertion mark. Please do not raise saddle above this line.

Safety first

Before you head off please read our advice for safe cycling. If you are the responsible adult, parent or guardian we recommend the following precautions.



Ensure that a helmet is adjusted correctly in accordance with the manufacturer's instructions.



Ensure sturdy footwear is worn and nothing can become entangled in the pedal or drivetrain.



Ensure that you familiarise yourself or your child with your new bicycle in a safe environment. We pride ourselves on light action brakes. Check that you can come to a stop safely using the brakes. If assisting a child, walk beside them and get them to pull the brake lever to allow them to feel its responsiveness.



Your Islabike is set up so that the right hand brake lever operates the front brake. Where the destination country drive on the right (with the exception of our balance bike) the right hand brake lever will operate the rear brake.



Be aware braking performance and grip will be drastically reduced in wet conditions.



Ride carefully and keep children away from busy streets or highways.



Always observe national legal requirements if riding on public roads. If you are cycling in any other countries or in the EU, please check national guidelines.



It is important that your bike is regularly maintained. It should be inspected if an accident occurs.



We do not recommend that any cargo or bicycle trailer is fitted.



We do not recommend fitting a child seat to the luggage rack mounting points or seat post.



Handlebar ends becoming exposed from repeated contact with the ground or heavy fall. Never ride a bike with an unplugged handlebar end. You can buy replacement handlebar grips on our website www.islabikes.co.uk or call +44 (0) 1584 708 383.



Front brake damage can occur in a crash. If the handlebars become twisted from a crash the cable can wrap itself tightly and damage the noodle hinge dock. This has been reinforced on our bikes but they are not indestructible. Always check the front brake operates correctly and the brake hinges were not damaged after a crash. You can easily perform a visual inspection by comparing to the rear brake. You are unsure please contact our technical support team on +44 (0)1584 708 383 or email techsupport@islabikes.co.uk.

User guidelines



Your Beinn has been designed to be ridden on paved, unpaved, gravel roads and off-road trails with moderate gradients. Contact with irregular terrain and loss of tyre contact with the ground may occur. Drops are intended to be limited to less than 15cm. The maximum safe combined rider and luggage weight limits are as follows:

- Beinn 20 Small = 35Kg
- Beinn 20 Large = 40Kg
- Beinn 24 = 50Kg
- Beinn 26 = 55Kg
- Beinn 27 = 65Kg
- Beinn XS/S/M = 125Kg



Nothing lasts forever, including your bike. When the useful life of your bike or its components are over, continued use is hazardous. Materials and components may react to wear or stress fatigue in different ways. If the design life of a component has been exceeded it may suddenly fail, possibly causing injuries to the rider. Every bike and its components parts have a finite life. The length of that life will vary with the construction and materials used in the frame and components. Your bike and its components are subject to fatigue. With enough use at high enough loads cracks can develop that could lead to failure. Cracks, scratches or a change of colour could indicate that the design life of the component has been reached and it should be replaced. Extra care should be taken when inspecting parts that are subject to high levels of stress.



Please note your bike is not intended for the following types of riding:

- Dirt jumping
- Downhil
- Slalom
- BMX
- Enduro
- Parents having a go...

Factors that can reduce product lifespan include:

- Impacts to the bike from crashes, bumps or jumps.
- Exceeding the maximum weight limit for the bike.
- High mileage/usage.
- Environmental conditions (unusually damp/saline(salty) atmosphere, muddy or sandy conditions).
- Poor maintenance and use out of correct adjustment.
- Unsympathetic riding style.

Factors that can increase product lifespan include:

- Regularly cleaning and maintaining your bike.
- No impacts to the bike from crashes, bumps or jumps.
- Observing the maximum weight limit for the bike.
- Environmental conditions (dry, clean, non-corrosive environment).
- Sympathetic riding style.



It is not possible to make a bike that is impervious to damage. If you crash, damage or use the bike beyond its limitations, there is a higher risk of failure which could result in serious injury or death. Bikes that are used competitively should be subject to more frequent and rigorous checks. Take particular care to check the frame tube junctions and welds as well as all the components for damage or excessive wear. If in any doubt, please contact our technical support team on +44 (0) 1584 708 383 or email techsupport@islabikes.co.uk. Or take it to a qualified cycle mechanic for inspection.

Guarantee

Your Islabike comes with a 5-year guarantee on frame and forks and a 2-year guarantee on parts. This covers faulty manufacturing but not normal wear and tear. This guarantee only applies to the original purchaser of the bike.

Your statutory rights are not affected by the guarantee.

Ex-display / Demo: 5-years frame and forks / 2-year parts

Second hand: 12-months frame and forks



Our bikes are not guaranteed for racing in sanctioned or competitive events. The use of a bicycle in hazardous conditions including changeable and uneven surfaces can put high, unpredictable loads on the bicycle and its components. Lack of rider skill and experience can further increase these loads leading to the possibility of serious damage to the bicycle and/or injury to the rider. If you choose to participate in these events then please carry out more frequent and thorough maintenance and checks, including regularly inspecting the frame, fork, stem, cranks and handlebars for signs of damage. Discontinue use immediately if anything untoward is spotted and contact our technical support team on +44 (0) 1584 708 383 or email techsupport@islabikes.co.uk.

Maintenance

Keeping your bike clean and maintained comes with many benefits. Not only will your Islabike perform better but it will be safer, last longer and look great. To do this we have listed some regular checks to help you along the way. Of course, if you are unsure of anything we strongly recommend you seek professional advice or contact our technical support team on +44 (0) 1584 708 383 or email techsupport@islabikes.co.uk.

Firstly, moving parts on your cycle will need lubricating from time to time. Weather conditions are generally the biggest factor that determine frequency of maintenance and lubrication. However, it is also heavily dependent on the frequency, type and duration of riding.

Component	Lubricant	Frequency
Chain	Oil	Weekly or after washing / rain
Brake cables	Oil	Weekly or after washing / rain
Gear cables	Oil	Monthly or after washing / rain
Wheel bearings	Grease	6 months
Pedals	n/a	Sealed bearings
Headset	n/a	Sealed bearings
Bottom bracket	n/a	Sealed bearings

Brakes

One of the most important safety features of your Islabike. It is a good habit to check the brakes on a regular basis. This should be done depending on the type, frequency or duration of riding. If your bike has not been used for a period of time, we recommend a quick check before riding.



Safety check

Before every ride:

Give the brakes a few pulls to check they are working – If the brakes feel smooth and the brake levers are not moving all the way back to the handlebar this is a good sign. If the brakes contact the handlebar or are difficult to operate please view <http://www.islabikes.co.uk/info-hub/how-to-check-your-brakes-video>.

Check pads contact the rim correctly when braking – Pull on one brake at a time and check the brake pads touch the rims nice and evenly.

Check pads are not fouling the rim – Lift the front of the bike off the ground with the handlebars and give the front wheel a spin. If the wheel spins freely your brakes are not fouling. Repeat the process for the rear ensuring you spin the wheel forwards and your child does not put his/her hands in the wheel.

Check pads are not worn out – Brake pads do not last forever. Eventually they will need replacing. Again, this will depend on the type, frequency and duration of riding. Our brake pads come with a wear indicator line. If your brakes are now worn down to this line or you cannot find the line you should replace your brake pads immediately. We highly recommend this is carried out by a trained cycle mechanic.

If in doubt please contact our technical support team on +44 (0) 1584 708 383 or email techsupport@islabikes.co.uk.

Wheels

Rim wear - Routinely check your bicycle rims for any wear. Our bikes have an indicator line that runs the circumference of the rim. When this becomes flush with the rest of the rim or disappears it is time to replace the wheel. For new wheels contact our customer service team on +44 (0) 1584 708 383 or email techsupport@islabikes.co.uk.



Rim trueness - Depending on the type of riding you do your Islabikes bikes wheels may become untrue or damaged when riding. This means they will not spin straight and will wobble. If for any reason they are untrue our wheels can be easily repaired, please contact our technical support team on +44 (0) 1584 708 383 or email techsupport@islabikes.co.uk.

Hubs - Your hubs are fitted with cup and cone bearings. Although they are sealed water and grit can enter your hubs and cause premature wear. To prolong the life and keep them running smooth and efficient. We recommend annual maintenance and re-greasing of hub bearings.

Tyres and Tubes

Tyre wear - Regularly check tyres for general wear and tear. Over time your tyres will become more worn and can become more susceptible to punctures.

Tyre pressure - Regularly check your Islabike tyre pressure as they slowly go down over time. To check, simply push your thumb hard onto the tyre or use a pressure gauge fitted to most quality bicycle track pumps. If you can touch the rim this probably needs some more air.

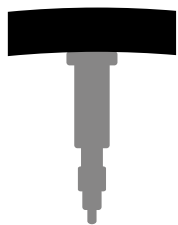


You should not exceed the maximum tyre pressure printed on the sidewall of the tyre. We recommend approx. 70% of the maximum tyre pressure illustrated on your tyre. To inflate presta valves you must first open the valve by unscrewing and tapping the valve end to relieve it if stuck. Inflate to correct pressure and then carefully re-tighten to close the valve.

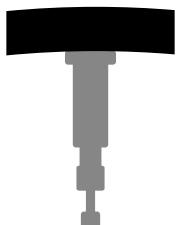


When re-inflating a tyre or after changing an inner tube ensure tyre is seated centrally on rim and continually check around the rim as you inflate to ensure rim is seated correctly and prevent tyre blowing off rim.

Use our guide to inflate your tyres: <http://www.islabikes.co.uk/info-hub/how-to-inflate-your-tyres-video>.



Valve closed



Valve open

Drivetrain

The drivetrain is a category of components made up of the chain, cranks, cassette or freewheel and pedals. These components work together to drive your Islabike forward. These are crucial in maintaining the optimum performance and life of your Islabike. To keep these running smoothly we advise the following.

Chain cleaning and lubricating - We recommend oiling periodically or after excessive use. Your Islabike is supplied with a fully enclosed no tools chain guard. Simply apply general purpose maintenance oil to the port hole whilst simultaneously turning the cranks backwards to ensure full chain coverage.

Gears

Your Islabike has had its gears adjusted prior to delivery. These should be checked periodically or after a fall to ensure they are operating correctly. Quick check:



Ensure your rear derailleur hanger is not twisted or bent. Place your Islabike in gear 1 or the biggest sprocket and look from the rear. Look out to see if the rear derailleur is fouling the spokes or looks twisted.

If the gears are not working correctly contact our technical support team on +44 (0) 1584 708 383 or email techsupport@islabikes.co.uk.

Recommended torque settings

All stem bolts	7Nm
Saddle clamp bolts	7Nm
Seatpost collar bolt	5Nm
Crank bolts	35Nm
Pedals	30Nm
Wheel bolts	8Nm
Brake pads	6Nm
Brake cable pinch bolt	6Nm
Brake arm fixing bolts	6Nm
Rear derailleur	6Nm

Spares and replacement parts

We carry stock of replacement parts for your Islabike including inner tubes, tyres and grips. Please visit our website for a list of readily available spares or contact us on +44 (0) 1584 708 383 or email info@islabikes.co.uk.

We only recommend using genuine parts for safety critical components e.g. brake cables, brake blocks and bolts.

If you can't find what you are looking for or are unsure of any compatibility for older models, please contact our technical support team by phone or email.

techsupport@islabikes.co.uk
+44 (0) 1584 708 383

For support on teaching your child to ride, please see our Info Hub.
www.islabikes.co.uk/info-hub

Frame number

Please make a record of your frame number. This is a combination of letters and numbers unique to your bike stamped to the underside of the frame. This is required by police and insurance companies in case of loss.



ISLABIKES
www.islabikes.co.uk