



helen moore
2023



The 2023 Collection

Hello from Hester & Jessica
03

Fabric Swatches
04

Faux Fur Throws
05

King Size Throws
06

Bed Runners
06

Double Throws
07

Comforter Throws
07

Faux Fur Skins
08

Faux Fur Cushions
09

Draught Excluders
10

Slipper Boots
11

Slippers
12

Hot Water Bottles
13

About our faux fur and factory
14

Trade information
15

Trade Accounts

You can apply for a trade account by visiting:
helenmoore.com/trade-application

Alternatively you can contact us on the below
sales@helenmoore.com
+44 (0) 1884 860900

Connect with Helen Moore

 @helenmooreengland

 /helenmooreengland

 /helen-moore-england

BERGDORF GOODMAN

THE
NATIONAL
GALLERY

SELFRIDGES & CO

ANTHROPOLOGIE

The British
Museum

LIBERTY.

FORTNUM
& MASON
EST 1707

Visit our trade website for exclusive items and limited edition fabrics

www.trade.helenmoore.com
sales@helenmoore.com
+44 1884 860900

helenmoore.com

Welcome to our 2023 Home & Living Collection. Our new collection invites you to discover the very best of British craftsmanship. Each item continues to be designed and made in our own factory in Devon by our talented and dedicated team of designers and makers.

Inspired by modern living and our commitment to sustainability, our 2023 collection reflects our love of classic design with natural tones, luxury fabrics, and contemporary textures. We only ever work with fabrics that we know you and your clients will love.

In addition to our extensive collection of throws, cushions, and accessories, we also offer a bespoke service, allowing you and your clients to choose custom sizes, fabrics, and design options. By choosing to work with British manufacturers, you can offer your customers an exclusive service.

Family and community are at the heart of our business. Last year, a new generation of the Moore family took over the business. For those who don't know us, we are Hester and Jessica Moore, Helen's daughter and daughter-in-law. Our commitment to our community is stronger than ever, and we are proud to have increased local employment and offer upskilling training to our incredible team, which makes us stronger for the future.

We feel so fortunate to work with the best retailers, designers, hoteliers, and stylists all over the world. Being able to work closely with them to create collections bespoke to their spaces and customers is a privilege.

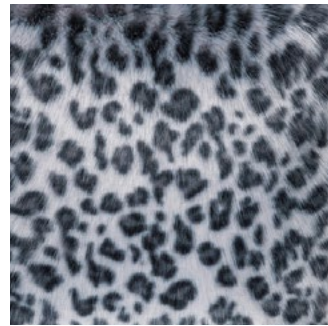
We wish you all a very successful 2023.

Hester & Jessica



Fabric Swatches 2023

NEW



Silver Leopard



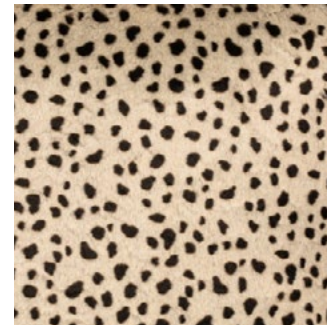
Stone



Conker



Biscuit Cloud



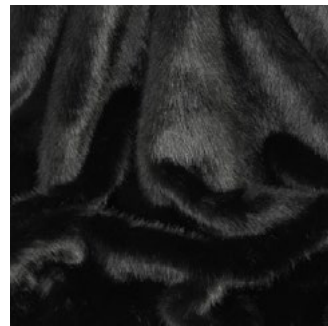
Appaloosa



Black Sheepskin



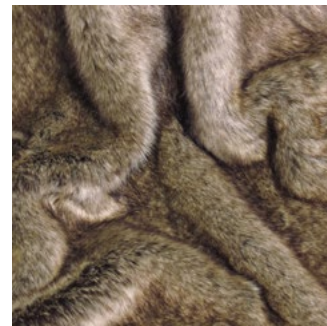
Pebble Sheepskin



Jet



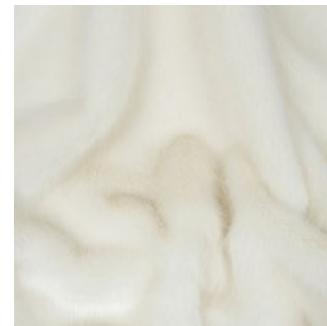
Midnight



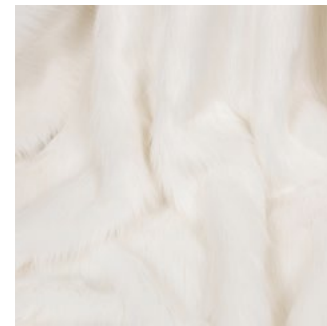
Truffle



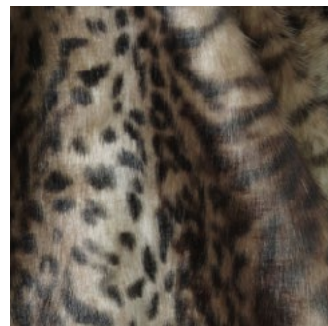
Oyster



Ermine



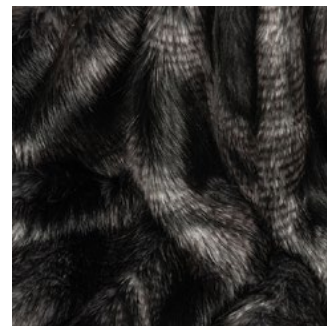
Whisper



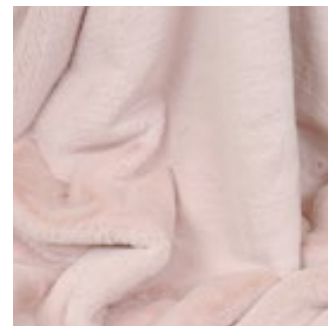
Ocelot



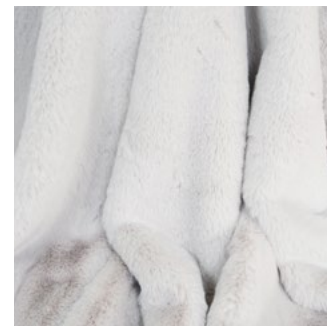
Lynx



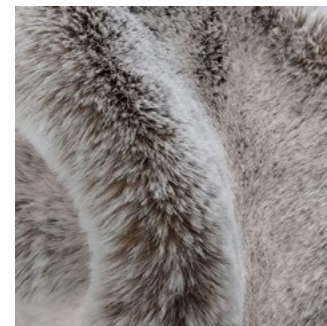
Black Quail



Blossom Cloud



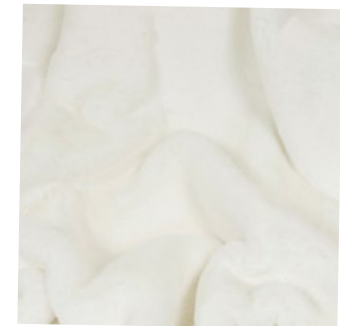
Mist Cloud



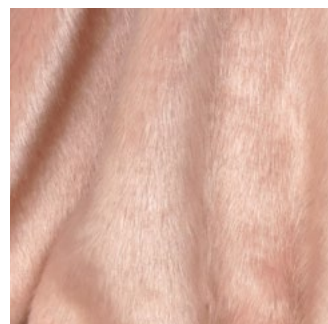
Cappucino Cloud



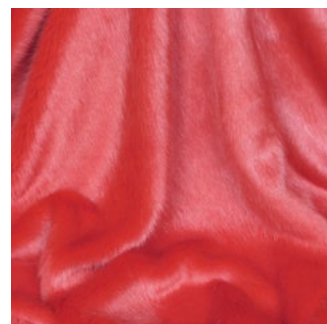
Grey Cloud



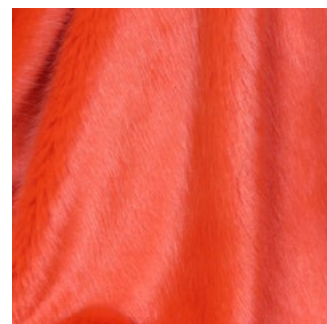
Ivory Cloud



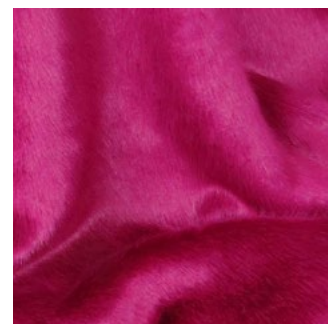
Dusky Pink



Coral



Blaze Orange



Magenta

Check our trade website for up to date colours and textures.



Throws

Made from luxurious faux fur and available in a variety of beautiful colours, all Helen Moore throws are made by a dedicated team of highly skilled machinists and finishers, for whom quality and attention to detail is paramount. All throws are lined with faux suede, except for the Comforters which are lined with soft velboa.

Comforter Throw 145 x 90cm

Double Throw 180 x 145cm

King Size Throw 230 x 220cm

Large Runner 244 x 145cm

Small Runner 214 x 145cm

Bespoke

We realise many beds, sofas and armchairs are not of a standard size so if you, or your customer, require a different size please get in touch and we will make something especially for you.



King Size

The ultimate luxury, our King Size Throw covers the bed from top to toe.

King Size Throw 230cm x 220cm



Bed Runner

The Bed Runner is longer than the double throw, making it perfect for dressing the end of the bed.

Bed Runner Throw 244cm x 144cm



Double Throw

This is our most popular size throw. The Double Throw is designed to dress the end of the bed or drape over the sofa.

Double Throw 150 x 180cm

[helenmoore.com](https://www.helenmoore.com)



Comforter Throw

Designed to bring a little indulgence to the home, the Comforter is perfect for snuggling up on the sofa or as an added luxury on the foot of the bed. Lined in super soft velboa.

Comforter Throw 145cm x 90cm



Animal Faux Fur Skins

Designed in the classic style of the sheepskin, the versatile faux fur animal skin looks wonderful draped over an armchair or sofa. Lined with faux suede. Available in two sizes.



Oyster



Whisper



Pebble Sheepskin



Black Sheepskin

Small L 90 x W 70cm / Medium L 120 x W 70cm



Cushions

Perfect for sofas or beds and available in all our fabrics. Choose either feather or hollow fibre filling. All cushions have a zipped cover, which can be easily removed for cleaning, with the exception of our heart cushions.



60cm x 60cm



48cm x 48cm



40cm x 40cm



Heart Cushion



30cm x 45cm



Bolster 48 x 17cm



Draught Excluder

This wonderfully practical item is designed to keep draughts at bay. There is a covered inner hollow fibre bolster, and the faux fur has a full length zip, so that it can be easily removed for washing.



Stone



Truffle



Pebble Sheepskin



Slipper Boots

Lined with Sherpa fleece, our luxury Slipper Boots are so warm and cosy.



Blossom Pink



Biscuit



Ermine White



Lynx



Silver Leopard



Ocelot



Truffle Brown



Pebble Sheepskin



Black Sheepskin



Midnight Blue



Royal Blue



Slippers

Lined with Sherpa fleece, these Slippers are so warm and cosy.



Grey Cloud



Biscuit Cloud



Blossom Cloud

Sizes small/medium 4-5 and medium/large 6-7



Hot Water Bottles

A timeless luxury. Practical as well as beautiful, Helen Moore hot water bottles stay warm until morning. Mini sizes are now available in nearly all colours.



Appaloosa



Biscuit Cloud



Black Sheepskin



Blossom Cloud



Cappuccino Cloud



Ermine



Grey Cloud



Jet



Lynx



Mist Cloud



Ocelot



Pebble Sheepskin



Silver Leopard



Truffle



About our faux fur and factory

Quality

Our faux fur is made from very high-quality fibre, which is inherently fire retardant. This means that our throws have the required certification to be used on furniture. There are a few exceptions within the collection, but these are clearly labelled as only suitable to be used as bed throws.

All the fabrics we use pass the stringent European REACH tests, which means that there are no harmful chemicals used in the manufacturing process, thus safeguarding human health and the environment.

Extensive Choice of Colours and Textures

Our collection for 2023 features a range of beautiful faux furs, from natural tones to the contemporary and colorful. We are constantly introducing new styles and colours throughout the year, so please keep looking at our trade website to see the latest additions to the range.

Sourcing

We aim to supply the softest and most luxurious faux fur, so we have worked hard over the years to source the very finest quality. The original fiber comes from Japan, and our most popular faux furs are made specially for us in carefully selected factories in the Far East.

Process and Finish

The faux fur for each of our products is cut by hand, and the seams are all chain-stitched and overlocked for strength. Our finishing team brush out any fur that may have become tucked in during machining, so the edges look soft and feathery, and the zips on the cushions are made virtually invisible by the brushed-out fur.

Trade Website

Our trade website is an exclusive trade only website. In addition to placing your orders you can view our full and up-to-date collection and see new products before the trade shows. Access to the trade website is only available on application.

Product Care

Many of our products are washable, however, we do recommend dry cleaning throws. Please see individual product labels for washing instructions.

Sizing

All Helen Moore products are made by a dedicated team of people. All sizes are approximate and sometimes the density of the fur can make a product look larger than it really is. We have tried our best to reproduce the colour swatches on page 4 accurately, but inevitably a photo may not always do the fabric justice. Swatch books are available to purchase.

