

Classic Saltbox Manual



Tools Needed:

- Cordless Drill (12V or higher)
- #2 Square Drive Bit
- Hammer
- 6' Step Ladder
- Tape Measure
- Utility knife
w/ blade & hook blade
- Speed Square
- 5/16" Wood Drill bit



Little Cottage Co.®
PO Box 455
Berlin, OH 44610
330-893-4212
www.cottagekits.com

© 2013 Little Cottage Co.

Classic Saltbox Manual



1



If the floor is purchased this is what the customer will receive on a pallet.

2



There are (5) 4x4's used on 10' and 12' wide buildings and (2) 4x4's on 8' wide buildings

3



Once 4x4's are layed out, install 2x4 joist on top as shown. The 2x4's are 16" on center.

4



Next use square to make sure 2x4 rim is flush on top with joist and secure with 2 1/2" screw.

5



Next make sure joist and rim are flush with 4x4 runner and secure with 2 1/2" screws.

6



Once the 2x4's are secure on sides and both ends, measure from corner to corner to square up floor.

Classic Saltbox Manual



7



Once floor is square, secure each joist by using a 2 1/2" screw as shown.

8



Repeat from other side.

9



Next install 5/8" CDX flooring. Make sure plywood is flush on the outside with 2x4 as shown. Secure with 1 1/4" screws.

10



Keep plywood flush as shown and secure with 1 1/4" screws.

11



Continue with flooring, secure with 1 1/4" screw every 8 to 10 inches on center.

12



Continue with flooring.

Classic Saltbox Manual



13



Floor is complete.

14



Next locate walls. Walls are lettered. Starting with A, continue following letters until complete.

15



Once first wall is in place, make sure you put pressure on the outside

16



Secure corner with 2 1/2" screw as shown

17



Continue inserting 2 1/2" screws every 16" on center.

18



Next install double door wall.

Classic Saltbox Manual



19



Secure walls with 2 1/2" screws as shown.

20



Once bottom is secured, make sure top end is flush as shown and secure with 2 1/2" screws.

21



Continue with walls.

22



Continue with walls.

23



Secure with 2 1/2" screws as shown.

24



Make sure wall is flush as shown. Secure wall to floor with 2 1/2" screws.

Classic Saltbox Manual



25



Repeat from picture 20

26



Secure wall splices with 2 1/2" screws.

27



Install back wall as shown.

28



Continue with back wall.

29



Secure back wall with 2 1/2" screws.

30



Secure top end with 2 1/2" screws as shown.

Classic Saltbox Manual



31



Push wall in and make sure it is flush on end. Secure with 2 1/2" screw.

32



Remove 2x4 on double doors.

33



Continue with removing 2x4 from double door as shown.

34



2x4 is removed and doors are ready to be opened.

35



Once 2x4 is removed from doors, install the end walls.

36



End walls are shorter than front wall as shown.

Classic Saltbox Manual



37



End walls complete.

38



Next locate the LP siding strips as shown.

39



Install LP Smart siding strips on the front wall as shown. Keep flush on inside and secure with 1 1/4" zinc screws going into 2x4 top plate.

40



Continue with front wall overhang.

41



Secure front wall overhang with 1 1/4" zinc screws every 6 to 8".

42



Continue with overhang.

Classic Saltbox Manual



43



Continue with overhang

44



Next locate 2x6 with trim for back wall top plate.

45



Start top plate 3 1/2" in from end wall as shown

46



Secure with 2 1/2" zinc screws.

47



Make sure top plate is flush on inside wall.

48



Continue with securing top plate as shown.

Classic Saltbox Manual

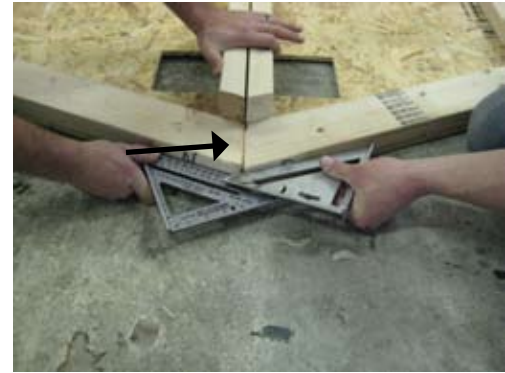


49



Next locate gables for end walls.

50



Before installing the gables, butt the ends together as shown. Make sure peaks meet at the point.

51



Secure with 2 1/2" zinc screws.

52



Secure with 2 1/2" zinc screw on bottom part of gable.

53



Secure 2 1/2" zinc screws as shown to tie gables together.

54



Lift gables to set on top of end wall as shown.

Classic Saltbox Manual



55



Make sure bottom plate of gable and top plate of end wall are flush on the inside.

56



Secure gable with 2 1/2" zinc screws as needed.

57



Securing gable with 2 1/2" zinc screws.

58



Before setting the second gable. Use this as your rafter pattern to complete the 2x4 trusses.

59



Locate OSB gussets. Install on both sides of peak. Secure with 1 1/8" zinc screws.

60



Continue with OSB gussets as shown.

Classic Saltbox Manual



61



Next install heel on short end of truss. Measure 14 1/2" from truss to end of heel.

62



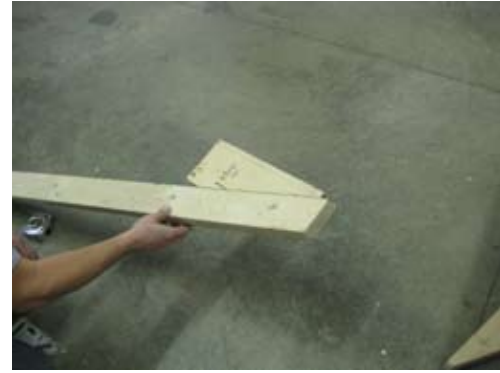
Locate the OSB gussets.

63



Secure on truss and heel with 1 1/4" zinc screws.

64



Flip truss over and do likewise.

65



This is what it looks like. With the OSB gusset on second side.

66



Secure gussets with 1 1/4" zinc screws.

Classic Saltbox Manual



67



Rafter is completed and ready for installation.

68



Install rafter.

69



Keep heel of rafter flush on inside as shown.

70



Secure with 2 1/2" screw from underneath overhang. First make sure rafter is in place.

71



Back wall view. Plate is marked for truss location.

72



Once truss is in place secure with 2 1/2" screw.

Classic Saltbox Manual



73



Insert screw on angle as shown to secure truss.

74



To complete truss in front secure with another 2 1/2" screw from inside as shown.

75



Rafters are completed.

76



Locate Fascia boards. Fascia is 2x4 with trim attached.

77



This is a better view of Fascia. 2x4's are marked for truss location.

78



When installing fascia make sure 2x4 is up and trim overhang is down.

Classic Saltbox Manual



79



Continue with fascia.

80



Secure with 2 1/2" zinc screws.

81



2x4 fascia will rest on overhang as shown.
Secure going up through LP siding with 1 1/4" zinc screw.

82



Continue with fascia on front.

83



Install fascia in back. You will use 1x3 trim as shown.

84



Secure with 1 1/4" zinc screws.

Classic Saltbox Manual



85



Locate the (2) LP siding strips as shown.

86



These strips go below the double doors.

87



Keep flush with top of floor and secure with 1 1/4" screw.

88



Continue with LP siding strips.

89



Strips are completed.

90



Locate outside trim corners.

Classic Saltbox Manual



91



This is the front left corner.

92



Install corner trim as shown. Secure with 1 1/4" zinc screws.

93



Securing corner on bottom with 1 1/4" zinc screw.

94



Install corner of overhang as shown.

95



Trim being installed on an angle.

96



Secure angle trim with 1 1/4" zinc screws.

Classic Saltbox Manual



97



Next install trim on back corners.

98



Secure trim with 1 1/4" zinc screws.

99



Securing trim with 1 1/4" zinc screw.

100



Locate rake block.

101



Install rake block

102



secure rake block with 2 1/2" zinc screw.

Classic Saltbox Manual



103



Insert 1 1/4" zinc screw from fascia trim into rake block as shown.

104



Insert 1 1/4" zinc screw every 8" to 10" on bottom edge of siding all the way around the building.

105



Secure gable splice trim to walls with 1 1/4" zinc screws as shown.

106



Next install roof sheathing. See roof layout for proper roof sheathing placing.

107



Once sheathing is in place secure with 1 1/4" zinc screw.

108



Secure opposite end.

Classic Saltbox Manual



109



Now make sure overhang measures the same as the bottom and secure with 1 1/4" zinc screws.

110



Back side is completed.

111



Next install front side.

112



Once sheathing is in place, secure with 1 1/4" zinc screw.

113



Secure opposite end.

114



Now make sure overhang is the same as the bottom, secure with 1 1/4" zinc screw.

Classic Saltbox Manual



115



Continue with roof.

116



Once roof is completed locate 2x4 rakes.

117



Layout 2x4 rakes as shown.

118



Make sure peaks line up and secure with 2 1/2" zinc screws as shown.

119



Insert another 2 1/2" screw from otherside.

120



Rake is ready for installation.



121



Install rake as shown

122



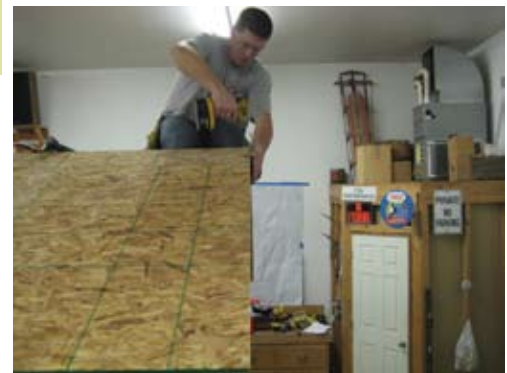
Once rake is in place secure with 2 1/2" zinc screw into rake block.

123



Rake is completed.

124



Insert 1 1/4" zinc screws through OSB sheathing into rakes.

125



Sheathing is completed and ready for shingles.

126



Next you are ready for drip edge which is provided by customer.



127



Drip edge goes around the edge of the roof as shown. You need to cut at the peak and also cut off at correct length.

128



Drip edge is being installed.

129



Continue with drip edge.

130



Drip edge completed and your building is ready for shingles.

131



Shingles are provided by the customer. Begin by installing the starter strips as shown. Secure with 7/8" roof nails.

132



Continue with starter strips.

Classic Saltbox Manual



133



Install shingles as shown and secure with 7/8" roofing nails.

134



Continue installing shingles in a stepping pattern as shown.

135



Continue with shingling.

136



Shingles are completed and ready for ridge cap.

137



Ridge caps are normally 12" wide.

138



Measure 6" from the center of the peak as shown. Do this on each end at the peak.

Classic Saltbox Manual



139



Once you have marked 6" on each end, snap a chalk line as shown.

140



Install the first ridge cap. Make sure it is at the chalk line as shown, and secure with 1 1/4" roofing nails.

141



Continue installing ridge cap.

142



when you reach the end, you need to cut ridge cap to fit.

143



Second to last ridge cap is being installed. Cut off whatever overhangs over the roof.

144



Next cut ridge cap to complete the roof.

Classic Saltbox Manual



145



Now locate the barrel bolt located on the double door. Make sure door is closed and use hammer to tap on barrel bolt. This will leave a mark on the floor.

146



Use 3/16" drill bit and drill a hole where the barrel bolt made a mark on the floor. When closing the door, barrel bolt will insert in hole to keep door closed.

147



Next locate T-handle door latch.

148



Insert T-handle as shown.

149



Make sure T-handle is centered in the hole.

150



Secure T-handle with 1 1/4" black headed screws.

Classic Saltbox Manual



151



Install D on inside as shown.

152



Use allen wrench to secure D-handle as shown.

153



Locate shutters.

154



Make sure shutter is evenly spaced up and down with window and secure with white head screws provided for shutters.

155



Shutters are completed.

156



Next locate window trim.

Classic Saltbox Manual



157



Make sure window trim is evenly divided above window and secure with 1 1/4" zinc screws.

158



Installing window trim.

159



Locate window trim for bottom.

160



Repeat from top trim and secure with 1 1/4" zinc screws.

161



Finalizing trim.

162



Next locate gable vents.

Classic Saltbox Manual



163



Install vents on each end.

164



Secure vents with 1 1/4" zinc screw on each corner.

165



Building is complete and ready for use.