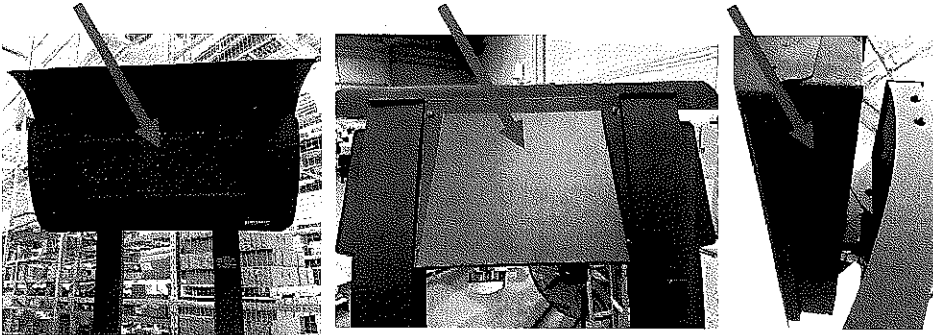


**KIT CONTENTS**

1 x Natural gas hose and regulator	1 x Gas valve
1 x Manifold	1 x Control knob
1 x Control piece	1 x Regulator bracket
4 x M4 bolts and nuts	Misc replacement stickers

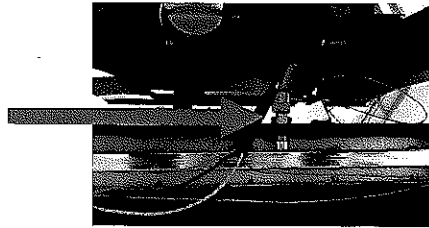
**INSTRUCTIONS**

Ensure heater is turned off and disconnected from gas supply. Remove gas bottle from heater and allow heater to come to room temperature before continuing with conversion.

**1 Remove front cover, bottom panel and control box cover**

**2 Replace manifold**

- a. Use two (2) spanners to disconnect gas hose from manifold

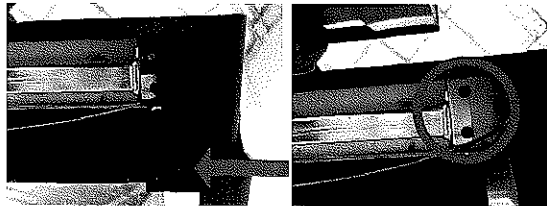
**⚠ Note: do NOT use heat to melt the sealant as this may damage the stainless-steel hose. Use appropriate spanners.**



- b. Remove screw on either side of the heater and then gently move metal casing aside to expose the screws holding manifold in place. Remove manifold and discard.

- c. Fasten new manifold in place. Connect the gas hose to new manifold inlet and tighten with two spanners.

**⚠ Note: Loctite or other thread sealant approved for use with natural gas must be used.**



**3 Remove and discard valve**

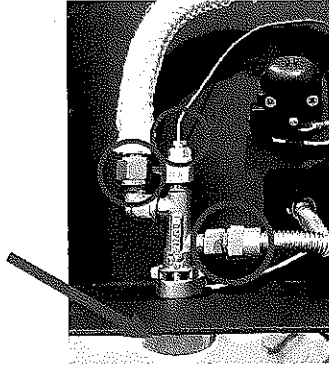
- a. Disconnect both valve inlet and outlet and thermocouple

**⚠ Note: do NOT use heat to try melt the sealant as this may damage the stainless-steel hose. Use appropriate spanners.**

- b. Remove control knob and discard

**⚠ Note: the control knob is attached to valve with adhesive. Use a screwdriver or other tool as leverage to push it off.**

- c. Undo the brass nut securing valve in place  
d. Remove valve and disconnect wire. Keep the screw that held the wire for use in **step 4**



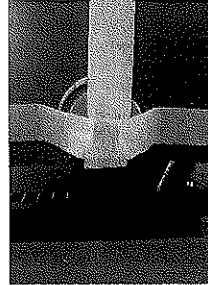
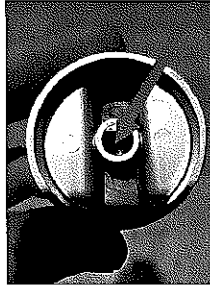
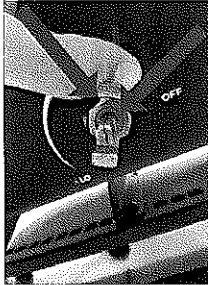
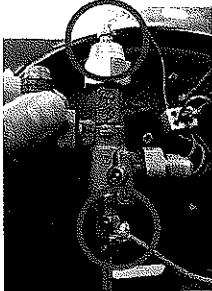
**4 Add new valve and control piece**

- a. Connect green wire and thermocouple to new valve  
b. Insert valve in place ensuring valve inlet and outlet orientation is correct  
c. Add control piece and tighten with supplied brass nut

- d. Connect both inlet and outlet hoses and tighten with spanner

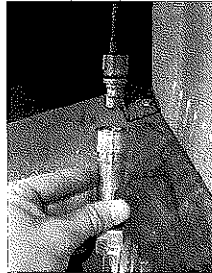
**⚠ Note: Loctite or other thread sealant approved for use with natural gas must be used.**

- e. Apply glue to shaft insert hole and fit new knob onto shaft. Use tape to secure knob in place until glue has cured.



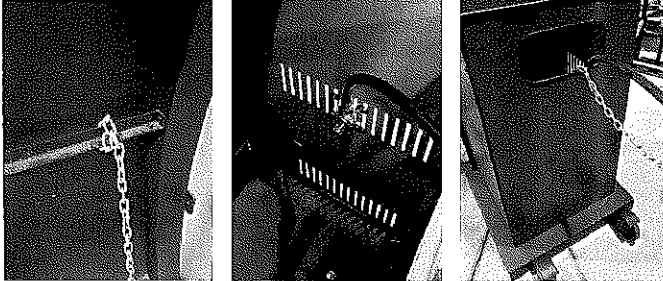
**5 Replace hose and regulator**

- a. Remove the rear cover from the stand to expose LPG cylinder cavity  
b. Disconnect LPG regulator from inlet hose using the Quick Disconnect fitting. LPG regulator can be discarded  
c. Connect natural gas hose and regulator using the quick connect fitting



**6 Add chain and bracket**

- a. Connect the chain to the inner brace of stand
- b. Attach natural gas regulator to stand's side panel using the provided fasteners
- c. Feed inlet hose and chain through opening in rear cover
- d. Reattach rear cover

**7 Replace sticker on:**

- a. Rating plate
- b. Ignition instructions

**8 Add new control markings sticker around knob. Ensure "HI" markings lines up****9 Leak Test**

- a. Connect heater inlet hose to natural gas fixed supply line
- b. Apply soapy water to all gas connections including:
  - i. Connections between hoses and regulator's inlet and outlet
  - ii. Connections between hoses and valve's inlet
- c. If leak is detected, disconnect hose from fixed gas supply line and tighten any leaking connections. Repeat steps a - c until no leaks are detected
- d. Turn control knob to ignition position and press the knob to pass gas through to the manifold (do not press ignition button). Apply soapy water to valve outlet and manifold connection and check for leaks
- e. If leak is detected, stop pressing control knob and tighten any leaking connections. Repeat step d until no leaks are detected
- f. If gas connections are leak tight then heater is ready to use
- g. Disconnect heater from fixed gas supply line

**10 Reassemble control box cover, bottom panel and front cover.**

Replace old user manual with new user manual