



72400-XNCD-K0S0 CIVIC VENTILATED VISOR

Installation and handling instructions

Thank you for purchasing the MUGEN product.

Please be sure to understand the following precautions before installing.

Please be sure to give this manual to the customer after installation.

please note

1. 1. Immediately after unpacking, check that the contents of the package (see the component list) are not missing or damaged.

2. Please check the model of the vehicle to be installed before installation.

[Applicable model] CIVIC HATCHBACK DBA-FK7

CIVIC TYPE R

DBA-FK8

3. 3. When installing or removing genuine parts, follow the service manual.

4. We are not responsible for any problems or accidents caused by processing, assembly failure, misuse of this product.

Please note that we do not bear any responsibility.

If you have any questions, please contact us at the following.

2-15-11 Hizaoricho, Asaka City, Saitama Prefecture 351-8586

M-TEC Co., Ltd. Product Division Product Business Division

[Business hours 10: 00-17: 00 (excluding Saturdays, Sundays, and holidays)]

TEL. 048-462-3131

FAX. 048-462-3121

To customers

1. 1. If the ventilated visor is damaged or deformed due to an accident or contact, repair or remove it immediately.

please do it. Driving as it is is very dangerous because it may cause an accident.

2. If the ventilated visor becomes dirty, soak a sponge in a neutral detergent diluted with water and wash it with water.

Wipe off the water with a waste cloth. Solvents, chemicals, etc. will damage the ventilated visor.

Please do not use it.

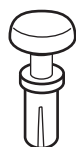
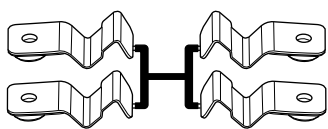
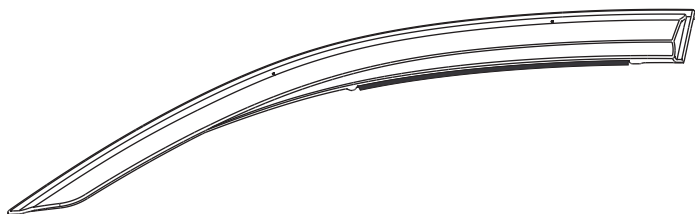
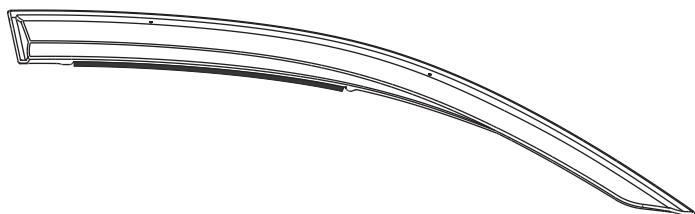
3. 3. Before using the product, please read and understand the "Handling Precautions" on page 5.

I.

4. Periodically check for looseness and looseness of metal fittings, etc., and check the mounting condition.

5. When wiping off the dirt on the window glass, if you touch the rubber molding strongly, it may come off.

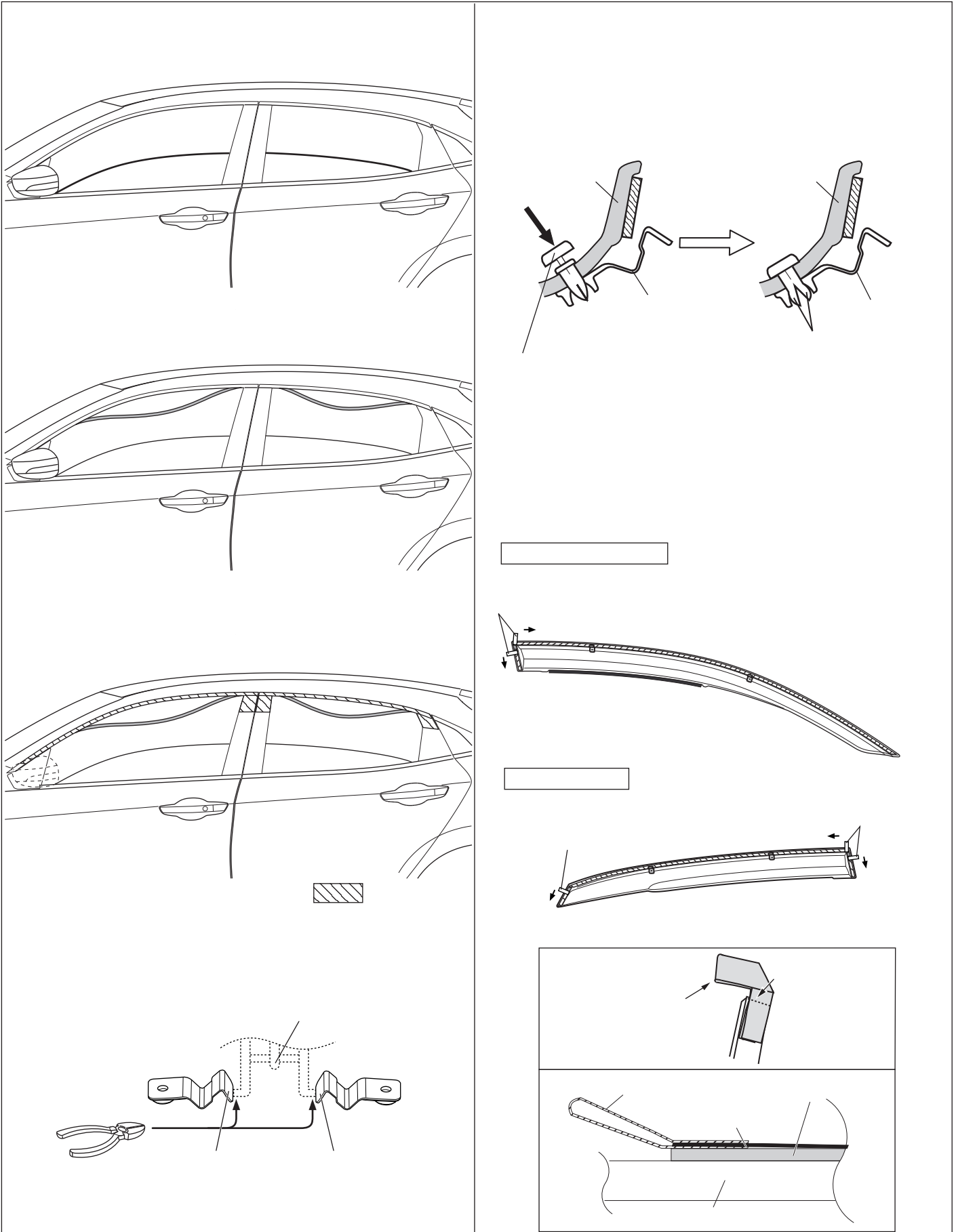
Please be careful. Also, please call attention at gas stations.



④ Separate the bracket from the runner.

runner

Temporary



II. Installation of ventilated visor

<< Caution >> · Be careful not to damage the ventilated visor and the vehicle body.

-The following work contents show the LH side. Do the same on the RH side.

- To prevent poor adhesion of double-sided tape, keep it out of the water for at least one day after installation.

That.

- ① Front visor Positioning in the length direction is 3 mm inward from the rear end of the front door panel.

Align the rear ends. (Reference illustration cross section aa')

- (2) Positioning in the height direction of the front visor is 3 mm below the top of the front door panel.

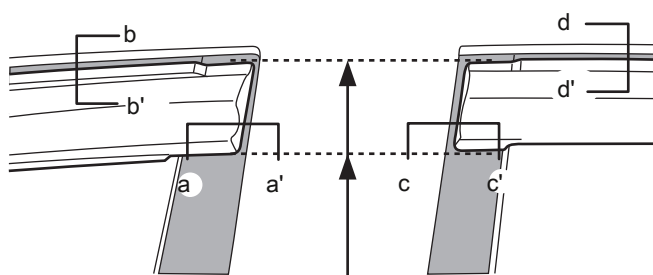
Align the top edges. (Reference illustration cross section bb')

- ③ For positioning in the rear visor length direction, align the front end of the rear visor 3 mm inward from the front end of the rear door panel.

To. (Reference illustration cross section cc')

- ④ For positioning in the height direction of the rear visor, align the upper end of the rear visor 3 mm below the upper end of the rear door panel.

To. (Reference illustration cross section dd')



* Positioning of the rear visor is
Match height with front visor

