

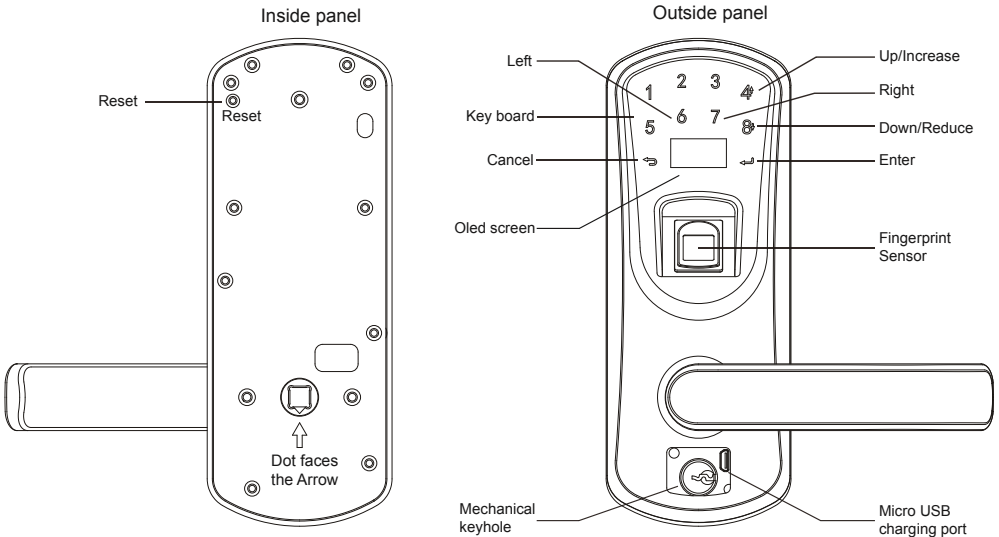
V8

weJupit V8 Fingerprint Smart Door Lock  
User Manual

# Contents

Product Introduction.....	01
Installation Guide.....	04
Operation Introduction.....	11
Software.....	17
Routine Maintenance.....	19
Warranty.....	20
Contact.....	21

# Product Introduction



Thank you for choosing this fingerprint touchscreen door lock. No more worries about losing keys, you just need one touch to unlock. This lock adopts a live semiconductor sensor and has 360 degree fingerprint recognition, which allows easy and fast fingerprint entry. The lock is equipped with OLED display, which makes visual menu based operations come true. The lock's software allows lock owner to copy and recover the user data and track the entry record. Double verification features increase lock security level significantly. Enjoy the latest biometric fingerprint technologies that will bring you a convenient and secure lock system.

# 1.Features

- UP to 200 user IDs could be registered to the lock and both finger-print and code unlocking ways are available for each ID.
- Administrator: who has the highest privilege in the locking system, can not only unlock but also set up the lock.10 IDs maximum (ID range: 0001-0010).
- Normal user: who can only unlock the lock but has no authorization to set up the lock.140 IDs maximum (ID range: 0011-0150).
- Guest user: who can only unlock the door within the permitted time period, 50 IDs maximum (ID range: 0151-0200). This function is specially designed for babysitters, hour empolyees, etc
- Password protection: add 1-6 digits before and after the real password, you can still open the lock, highly advanced anti-peep function
- Double ID combination mode to open: user A's fingerprint+user B's fingerprint, user A's password+user B's password, user A's fingerprint+user B's password, user A's password+user B's fingerprint, there must be 2 user IDs involved in the unlocking process
- Open mode: once you activate this function, anyone could open the door by pushing down the handle without finger or password verification, convenient for offices, clubs, shops during working hours
- Software Assistant: download/update/delete user data and entry records through this software
- Low power alert: if the battery voltage is below 4.6V, after you open the lock, a red light will blink and an alarm will ring as well.

# 2.Specification

- Stainless steel 304 for the whole lock body, which is anti-rust and anti-fading for 10 years
- Semiconductor sensor and 360 degree fingerprint recognition
- Anti-fake fingerprint and anti-technology opening leaf lock core ensuring a high security level
- Precision copper gear transmission design, ensuring a long lifetime (600,000 times)
- USA TI code chip, preventing high-frequency pulse unlocking
- Single latch---American standard
- Fitting door thickness between 1 1/5" and 2 2/5" (30-60mm)
- Operation temperature from -4 F° to 140 F°
- Powered by 4 AA Alkaline batteries (NOT included)

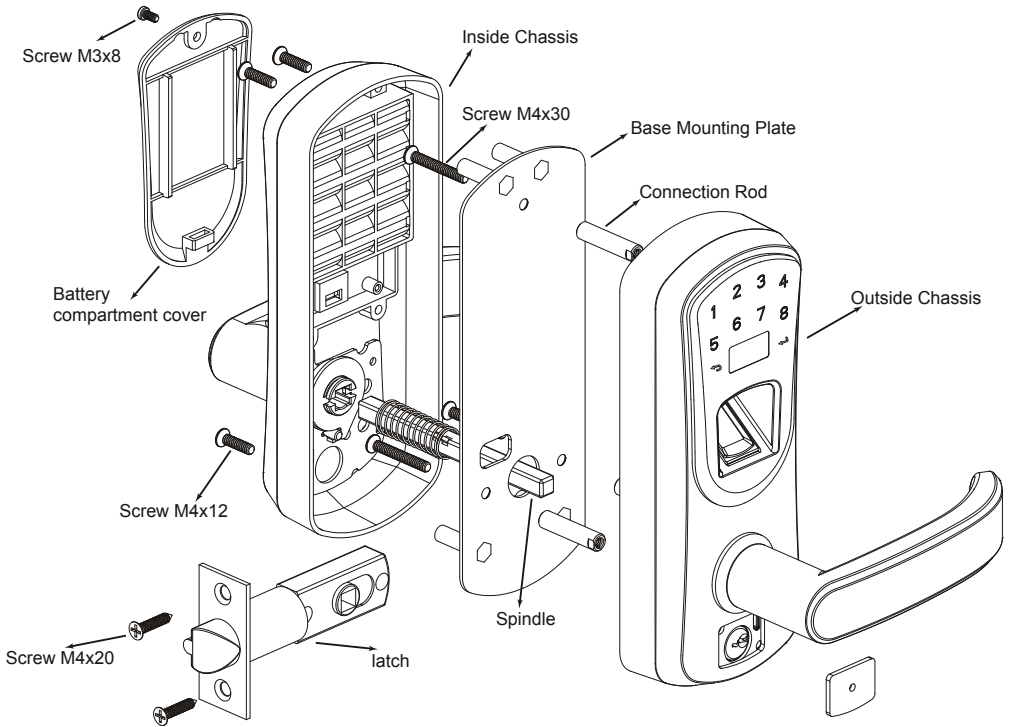
### 3.Packing List

Note:Please make sure that all accessories are in the package before installation.

# Installation Guide

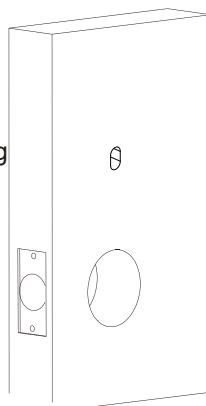
## 1. Breakdown



## 2.Installation Instruction

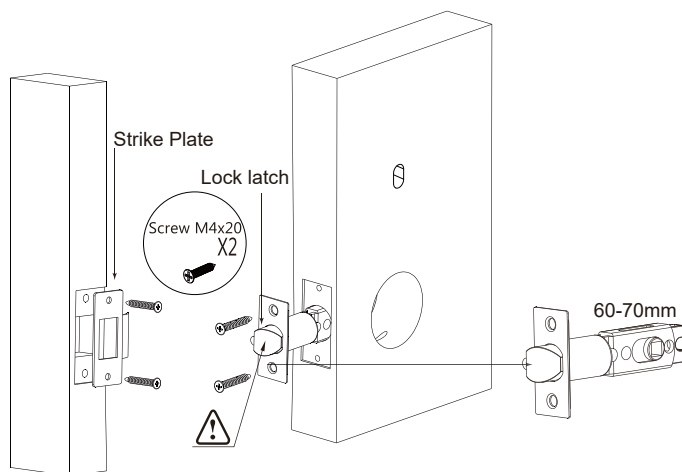
### A.Installation Overview

- a.Drill holes according to the paper guide inside the lock package
- b.Insert the lock latch into the door
- c.Install the square iron stick & outside lock housing
- d.install the inside lock housing



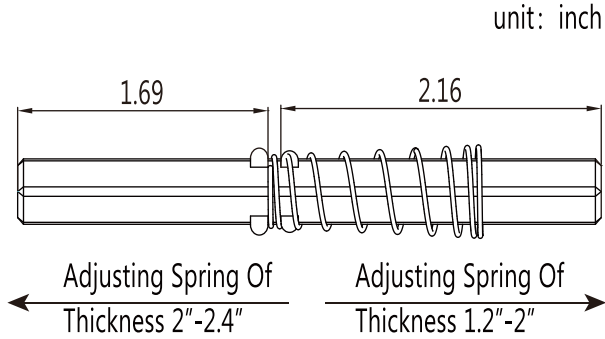
### B.Install The Lock Latch

- a.Insert the lock latch into the door and tighten up with 2pcs screws M4x20.
  - b.Install the strike plate and fix it with 2pcs self-tapping screws.
- ⚠:The latch should face to the outside deadbolt.  
⚠:2 fixed screws in line should be parallel to the door edge.  
⚠:The previous strike plate must be removed

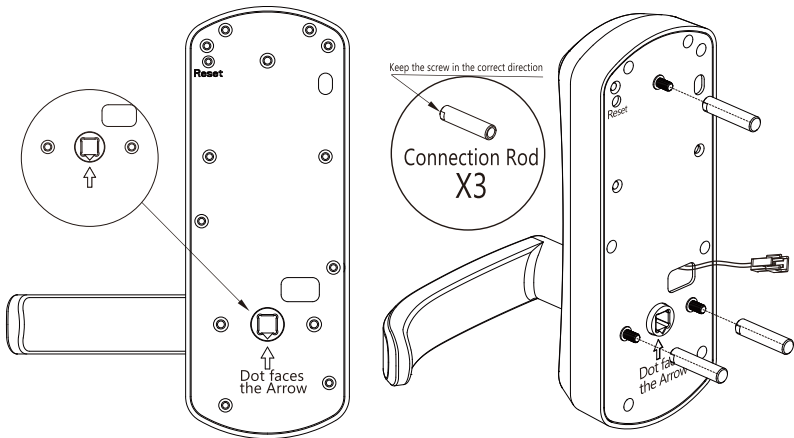


## C. Install The Square Spindle & Outside Chassis

a. Insert the square iron stick across the latch, if the door thickness is less than 2", the spring side should face the inside chassis. (Note: If the door thickness is over 2", the spring side should face the opposite direction).

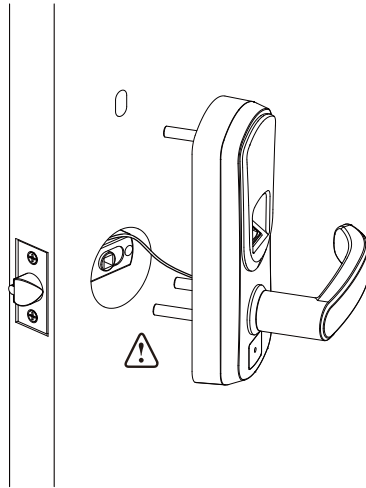


b. Tighten up the 3pcs connection rods to the outside chassis and make the two arrowheads face each other.



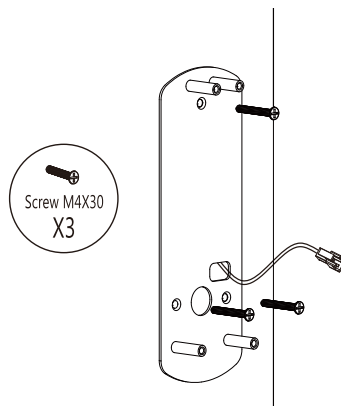


c. Insert the square iron stick smoothly across the latch. Make sure the stick edge slides into the hole on the outside handle. Get the wire on the handle across the space.



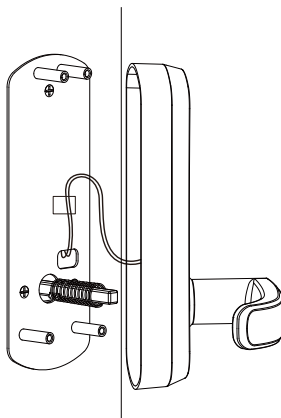
## D. Install The Inside Chassis Unit

a. Pass the wire through the rectangular hole on the base mounting plate and then fix the plate on the door with 3pcs M4x30.

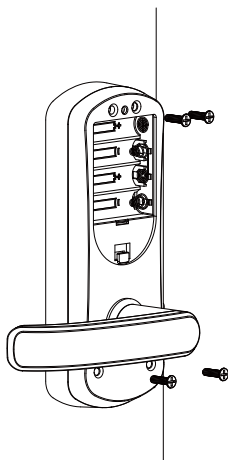


b. Connect the wire to the battery cable on the inside chassis

c. Insert the square iron stick into the inside handle. Please arrange the wire in the empty space and make sure the wire is fixed.



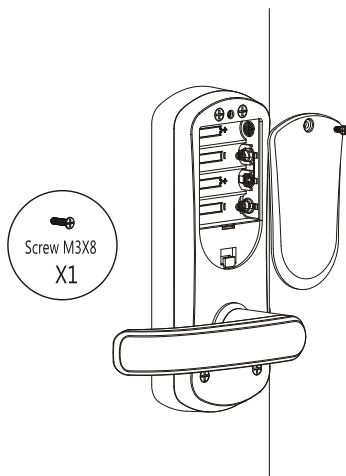
d. Install the inside chassis onto the mounting plate and fasten it with 4pcs M4\*12 screws



## E. Install The Battery

a. Install 4 new AA Alkaline batteries

b. Slide the battery cover down and then tighten up with the screw



c. Never mix new batteries with used batteries.

## F. Testing Lock

a. You should be able to push down and lift up the handle.

b. You should be able to unlock the lock with mechanical keys.

c. You should be able to add users and program the lock by following the operation instruction.

Note: You can contact our customer support team for the installation video.

# Operation Introduction

## 1. Brief Introduction

---

a. Administrator: who has the highest privilege in the locking system, can not only unlock but also set up the lock. 10 IDs maximum ( ID range: 0001-0010).

b. Normal user: who can only unlock but has no authorization to set up the lock. 140 IDs maximum ( ID range: 0011-0150).

c. Guest user: who can only unlock the door within the permitted time period, 50 IDs maximum (ID range: 0151-0200).

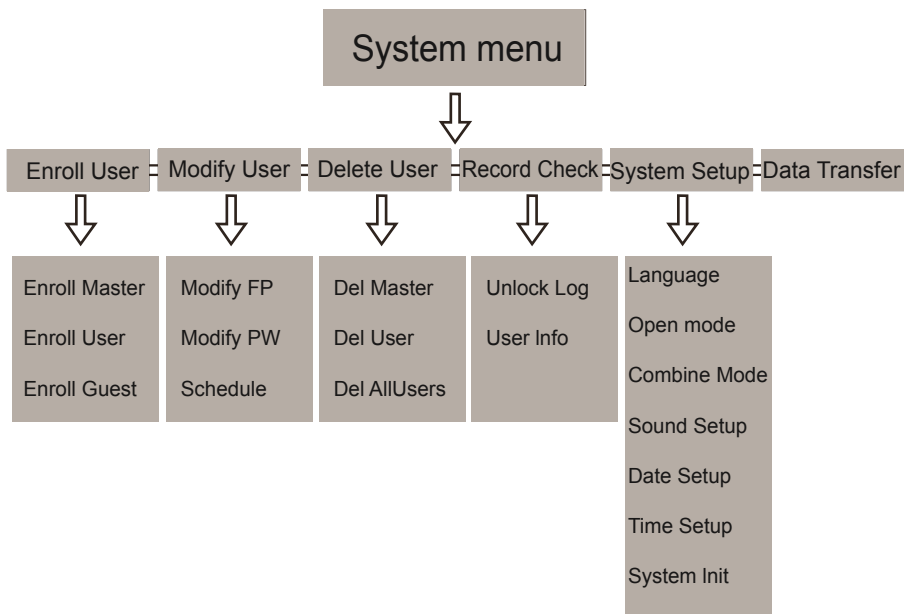
d. Each ID can be registered with either fingerprint or password, or both.

e. Back to Factory default: under this condition, the lock can be unlocked by any fingerprint.

f. At least one Administrator should be registered for the first time use.

## 2. Chart of menu

---



### 3.Register User ID

#### Register Administrator

Factory default

Active the lock by touching the screen

User Empty Enroll Master

↵ enter

Master ID 0001

41,81, ↵ enter

Enroll 3 times press properly  
Press FP #1  
Press FP #2  
Press FP #3  
FP Enroll OK

Press ↵ to log the 6-8 password if you only need the password

Input PW #1  
Input PW #2  
PW Enroll OK

Press ↵ If you only need the fingerprint

With Master code

Active the lock by touching the screen

↵ enter  
Verify Master  
Verify OK

System Menu  
Enroll User ◀  
Modify User  
Delete User  
Record Check  
System Setup  
Date Transfer

41,81, ↵ enter

Enroll User  
Enroll Master ◀  
Enroll User  
Enroll Guest

41,81, ↵ enter

Master ID 0002

41,81, ↵ enter

Enroll 3 times press properly  
Press FP #1  
Press FP #2  
Press FP #3  
FP Enroll OK

Press ↵ to log the 6-8 password if you only need the password

Input PW #1  
Input PW #2  
PW Enroll OK

Press ↵ If you only need the fingerprint

#### Register User

Active the lock by touching the screen

↵ enter  
Verify Master  
Verify OK

System Menu  
Enroll User ◀  
Modify User  
Delete User  
Record Check  
System Setup  
Date Transfer

41,81, ↵ enter

Enroll User  
Enroll Master  
Enroll User ◀  
Enroll Guest

41,81, ↵ enter

User ID 0011

41,81, ↵ enter

Enroll 3 times press properly  
Press FP #1  
Press FP #2  
Press FP #3  
FP Enroll OK

Press ↵ to log the 6-8 password if you only need the password

Input PW #1  
Input PW #2  
PW Enroll OK

Press ↵ If you only need the fingerprint

#### Register Guest

Active the lock by touching the screen

↵ enter  
Verify Master  
Verify OK

System Menu  
Enroll User ◀  
Modify User  
Delete User  
Record Check  
System Setup  
Date Transfer

41,81, ↵ enter

Enroll User  
Enroll Master  
Enroll User  
Enroll Guest ◀

41,81, ↵ enter

Guest ID 0151

41,81, ↵ enter

Schedule  
Frm mm-dd-yyyy  
To mm-dd-yyyy

6 ←, 7 →, 41,81, ↵ enter

00:00-23:59  
00:00-00:00  
00:00-00:00

6 ←, 7 →, 41,81, ↵ enter

Enroll 3 times press properly  
Press FP #1  
Press FP #2  
Press FP #3  
FP Enroll OK

Press ↵ to log the 6-8 password if you only need the password

Input PW #1  
Input PW #2  
PW Enroll OK

Press ↵ If you only need the fingerprint

# 4.Modify User ID

## Modify Fingerprint

Active the lock by touching the screen  
↵ enter  
Verify Master  
Verify OK

System Menu  
Enroll User  
Modify User ←  
Delete User  
Record Check  
System Setup  
Date Transfer  
41,81, ↵ enter

Modify User  
Modify FP ←  
Modify PW  
Schedule  
41,81, ↵ enter

ID 0001  
41,81, ↵ enter

Enroll 3 times press properly  
Press FP #1  
Press FP #2  
Press FP #3

Confirm Modify?  
↵ enter  
FP Modify OK

## Modify Password

Active the lock by touching the screen  
↵ enter  
Verify Master  
Verify OK

Menu Enroll  
User Modify  
System ←  
User Delete  
User Record  
Check System  
Setup Date  
Transfer  
41,81, ↵ enter

Modify User  
Modify FP  
Modify PW ←  
Schedule  
41,81, ↵ enter

ID 0001  
41,81, ↵ enter

Input PW #1  
Input PW #2

Confirm Modify?  
↵ enter  
PW Modify OK

## Modify Schedule

Active the lock by touching the screen  
↵ enter  
Verify Master  
Verify OK

Menu Enroll  
User Modify  
User Delete  
System ←  
User Record  
Check  
System  
Setup Date  
Transfer  
41,81, ↵ enter

User  
Modify FP  
Modify PW  
Schedule  
Modify ←  
41,81, ↵ enter

ID 0151  
41,81, ↵ enter

Schedule  
Frm mm-dd-yyyy  
To mm-dd-yyyy

6←,7→,41,81, ↵ enter

00:00-23:59  
00:00-00:00  
00:00-00:00

6←,7→,41,81, ↵ enter

Schedule Modify OK

## 5.Delete User ID

### Delete Master

Active the lock by touching the screen  
↵ enter  
Verify Master  
Verify OK

System Menu  
Enroll User  
Modify User  
Delete User ◀  
Record Check  
System Setup  
Date Transfer

41,81, ↵enter

Delete User  
Del Master ◀  
Del User  
Del All Users  
41,81, ↵enter

Master  
ID 0002

41,81, ↵enter

The first master ID  
is unable  
to be deleted at  
this mode

Confirm Del?  
↵ enter  
Delete OK

### Delete User

Active the lock by touching the screen  
↵ enter  
Verify Master  
Verify OK

System Menu  
Enroll User  
Modify User  
Delete User ◀  
Record Check  
System Setup  
Date Transfer

41,81, ↵ enter

Delete User  
Del Master  
Del User ◀  
Del All Users  
41,81, ↵ enter

Master  
ID 0011

41,81, ↵ enter

Confirm Del?  
↵enter  
Delete OK

### Delete All Users

Active the lock by touching the screen  
↵enter  
Verify Master  
Verify OK

System Menu  
Enroll User  
Modify User  
Delete User ◀  
Record Check  
System Setup  
Date Transfer

41,81, ↵enter

Delete User  
Del Master  
Del User  
Del All Users ◀  
41,81, ↵enter

Confirm Del?  
↵ enter  
Delete OK

## 6.Set Up Date and Time

### Set Up Date

Active the lock by touching the screen  
↵enter  
Verify Master  
Verify OK

System Menu  
Enroll User  
Modify User  
Delete User  
Record Check  
System Setup ◀  
Date Transfer

41,81, ↵enter

System Setup  
Language  
Open mode  
Combine Mode,  
Sound Setup  
Date Setup ◀  
Time Setup ◀  
System Init

41,81, ↵enter

Date Setup  
Month-Day-Year  
00-00-0000

6←, 7→, 41,81, ↵  
enter

Date Modify OK

### Time Set-up

Active the lock by touching the screen  
↵enter  
Verify Master  
Verify OK

System Menu  
Enroll User  
Modify User  
Delete User  
Record Check  
System Setup ◀  
Date Transfer

41,81, ↵enter

System Setup  
Language  
Open mode  
Combine Mode,  
Sound Setup  
Date Setup  
Time Setup ◀  
System Init

41,81, ↵enter

Time Setup  
Hour Minute  
00-00

6←, 7→, 41,81, ↵  
enter

Time Modify OK



## 7. Record check

---

### Unlock Log

Active the lock by touching the screen  
↵enter  
Verify Master  
Verify OK

System Menu  
Enroll User  
Modify User  
Delete User  
Record Check ◀  
System Setup  
Date Transfer

41,81, ↵enter

Record Check  
Unlock check ◀  
User check  
41,81, ↵enter

41,81, ↵Exit

### User Info

Active the lock by touching the screen  
↵enter  
Verify Master  
Verify OK

System Menu  
Enroll User  
Modify User  
Delete User  
Record Check ◀  
System Setup  
Date Transfer

41,81, ↵enter

Record Check  
Unlock check  
User check ◀  
41,81, ↵enter

41,81, ↵Exit

## 8. Open Mode

---

When the lock is in the open mode, anybody could open the door by pushing down the handle.

How to set the open mode: login to the system, go to the menu page, press ↵ to confirm or unlock the lock by the administrator, then press ↵ and ↵ at the same time for 3s to 5s. How to disable the open mode: activate panel, press ↵ for 5s.

## 9. Combine Mode

---

Combine Mode exists for high-security needs.

Enable and disable the combine mode: login to the system, go to the menu page, press ↵ to confirm;

When using this mode, the lock has to be unlocked by 2 IDs (fingerprint + fingerprint, fingerprint + code, code + code ); Any combinations of 2 administrator IDs (fingerprint + fingerprint, fingerprint + code, code + code ) can login to the system.

## 10.Sound Setup

---

Login to the system, go to the menu page, press ↵ to turn on or turn off the key sound or prompt sound.

## 11.System Init

---

Login to the system, go to the menu page, press ↵ to confirm.

You can reset the system to manufacture default by using this function and all user IDs will be removed after resetting.

## 12.Key unlock

---

Insert a key in the cylinder and rotate 180° counter-clockwise, push down the handle to unlock and then rotate the key 180° clockwise to take out the key.

## 13.Low battery alert

---

If the battery voltage is below 4.6V, when a user has opened the lock, a red light will blink and the alarm will ring, reminding the user to change the batteries.

## 14.Additional power source

---

When power runs out, users can power up the system by connecting a power bank via the included USB cable.

## 15.System Reset

---

If you can't log into the system, the system can be reset to the factory default by pressing the reset button. To reset the system, press the reset button until you hear a long beep.

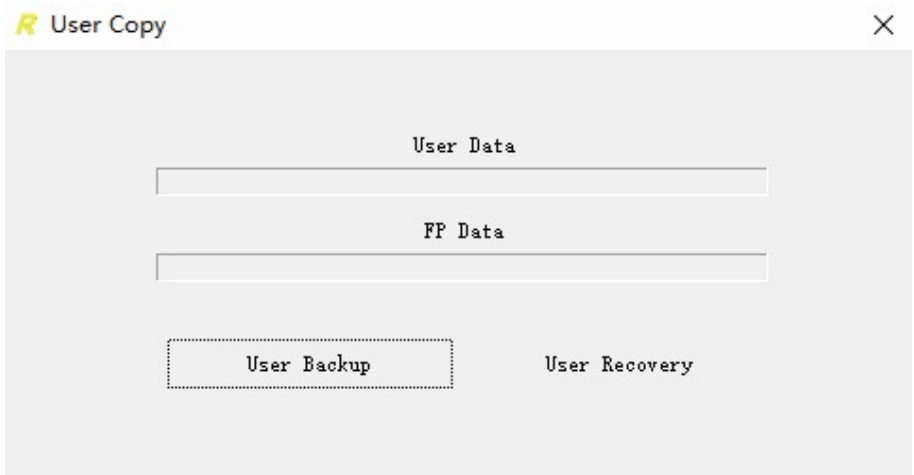
The reset button is located on the outside panel.

Note: You can contact our after-sales service for the programming video.

# Software Assistant

Download the software at:  
[www.wejupit.com/download](http://www.wejupit.com/download)

## 1.Data Transmitting



### Backup and Recover User Data

- a.Connect the lock to the computer through the USB cable (included).
  - b.Login to the lock system and go to the data transfer function and then open the lock software on the computer.
  - c.To back up the user data, click "User Backup" and select the user data to save the file. The user data will be transferred to the computer.
  - d.To recover the user data, click "User Recovery" and select the saved user file on the computer. The user data will be transferred to the lock.
- ⚠: Any user data in the lock will be overwritten by the recovered data!

## 2. Setting-up and manage user data

With the "LockAssistant" software, you can set up the lock, manage the user data or unlock records.

- a.Setting



- a1. Firmware Version: You can check the firmware version in the lock, and update the firmware version.
- a2. Time Set: You can customize the lock time or sync the lock time with the computer time

b.Download



### b1. User Download

Download All Users: all users will be downloaded from the lock to the computer.

Delete Selected User: only the selected users will be deleted.

Delete All Users: all users will be deleted, including the master users, normal users and guest users.

### b2. Log Download

Download All Records: all records in the lock will be downloaded to the computer

Delete All Records: all unlock records will be cleared from the lock.

### b3. Log Query

You can check the unlock records by selecting the date and user ID.

## Tips

- Always use a clean hand to operate the lock.
- Never allow corrosive material or liquid to touch the lock.
- Never knock the touchscreen with hard objects.
- Please clean the touchscreen frequently by soft cloth to ensure efficient fingerprint recognition. Do not use water or alcohol.
- Keep the keys in a safe place, you can use the keys to open the lock when failing with fingerprint or password.
- Please replace the batteries when low-voltage is alarming.
- If the stainless steel panel becomes dirty, use a little table wax (used on the car) to wipe it, it will look new again.

## The following conditions are not covered by free maintenance

- Any fault or damage caused by natural disasters like storm, fire, flood, thunder, earthquake, etc.
- Any fault or damage caused by improper usages, such as using under high voltage, smashing with a hammer, scratching with a knife, damping in water, staining or corroding with chemicals, infecting with a computer virus, etc.
- Any fault or damage caused by failure to comply with regulations stated in the User Manual or by the improper, rough and careless operation.
- Any fault or damage caused by using parts not certified by the original manufacturer.
- Any fault or damage caused by repairing or adjusting the product without authorization from the original manufacturer.
- Inability to provide purchase evidence of the ordering date or one year has passed since the purchase date.