

VW up!/Skoda Citigo/Seat Mii Dynamic Side Repeater Mirror Kit

Kit Contents

Qty – 2: Dynamic Side Repeater Mirror Lower Cover (Left and Right)

Tools Required

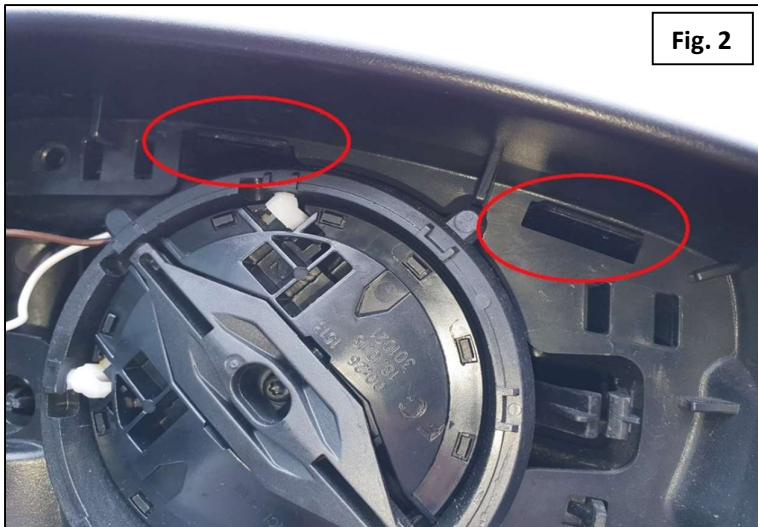
T20 Torx Driver

Mirror Glass Removal tool (included)

Small Flat-bladed Screwdriver (optional)

Instructions

1. Angle the mirror glass as far downward and inwards as possible. Using the included tool, along with your fingers, remove the glass from the mirror housing. Pull outwards on the top of the glass. DO NOT PULL ON THE OUTER END OF THE MIRROR GLASS, AS YOU RISK BREAKAGE! If unsure, there are plenty of video on YouTube explaining removal of VW wing mirror glass.
2. Disconnect the two heating element wires (where fitted) from the mirror glass (Fig. 1). Set the glass safely to one side.
3. Locate the two tabs at the top of the inside of the mirror housing which retain the mirror cap. Press down and push in on the tabs to release the mirror cap, and place to one side (Fig. 2).
4. Unscrew the T20 Torx screws retaining the inner housing to the base mounting and repeater unit (Fig. 3).
5. Remove the inner housing by squeezing the two black clips and pulling towards the rear of the car (Fig.4)
6. Remove the lower housing/side repeater by pulling forward and downwards. Pay attention to the clip which locates to the mirror base unit (Fig. 5).



7. Unplug the side repeater loom from the housing by depressing the clips. A small flat-bladed screwdriver can help to prise the connector off as it can be quite stiff.
8. Plug the loom into the new repeater and locate the lower housing onto the mirror base by engaging the clip in Fig. 5. This is an ideal opportunity to check the operation of the new dynamic repeater.
9. Replace the inner housing from Fig. 3 and 4, engaging the two clips and replacing the three T20 Torx screws. These are self-tapping so should feel reasonably tight when installing into the new indicator unit.
10. Install the mirror cap. There are two small location clips on the side repeater/lower cover to engage (Fig. 6) whilst also locating the clips as shown in Fig. 2. These should pop into place as you push the cover on.
11. Re-position the mirror glass mount so that is centralised, both vertically and horizontally. This will aid clipping the mirror glass back onto its mount.
12. Plug the heater element wires back onto the glass (where applicable), and the press the mirror glass back onto the mount. Keep pressure relatively central, as pressing on the outer edges of the glass risks damage to the mirror glass itself.
13. Repeat for other side of vehicle!

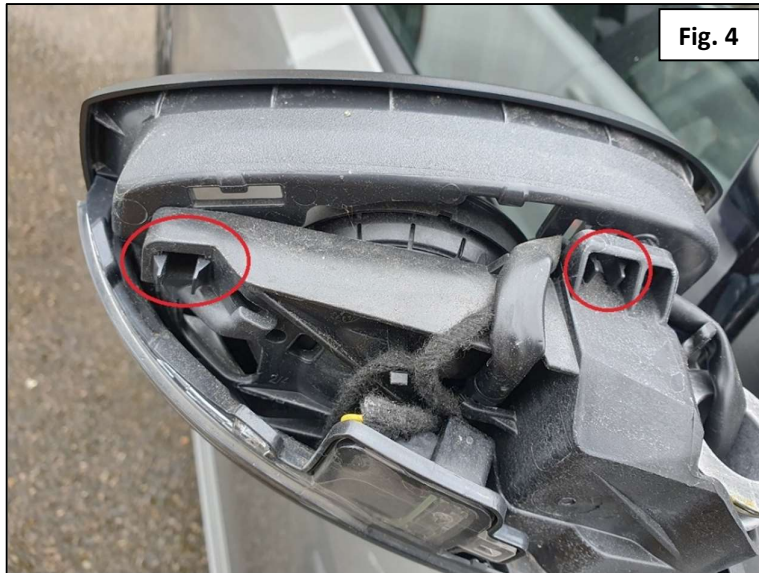


Fig. 4



Fig. 5



Fig. 6