

WS PBT Mizu Keycap Acceptable QC

We aim to deliver goods on time, but in case of any unexpected events beyond our control, such as force majeure or unforeseeable circumstances, the delivery time may be postponed or updated. Please check our website for updates on specific delivery times.

Product images are taken in a controlled environment, but due to variations in lighting and other factors, there may be a slight difference in color between the product image and the actual product. Please refer to the actual product for accurate color representation.

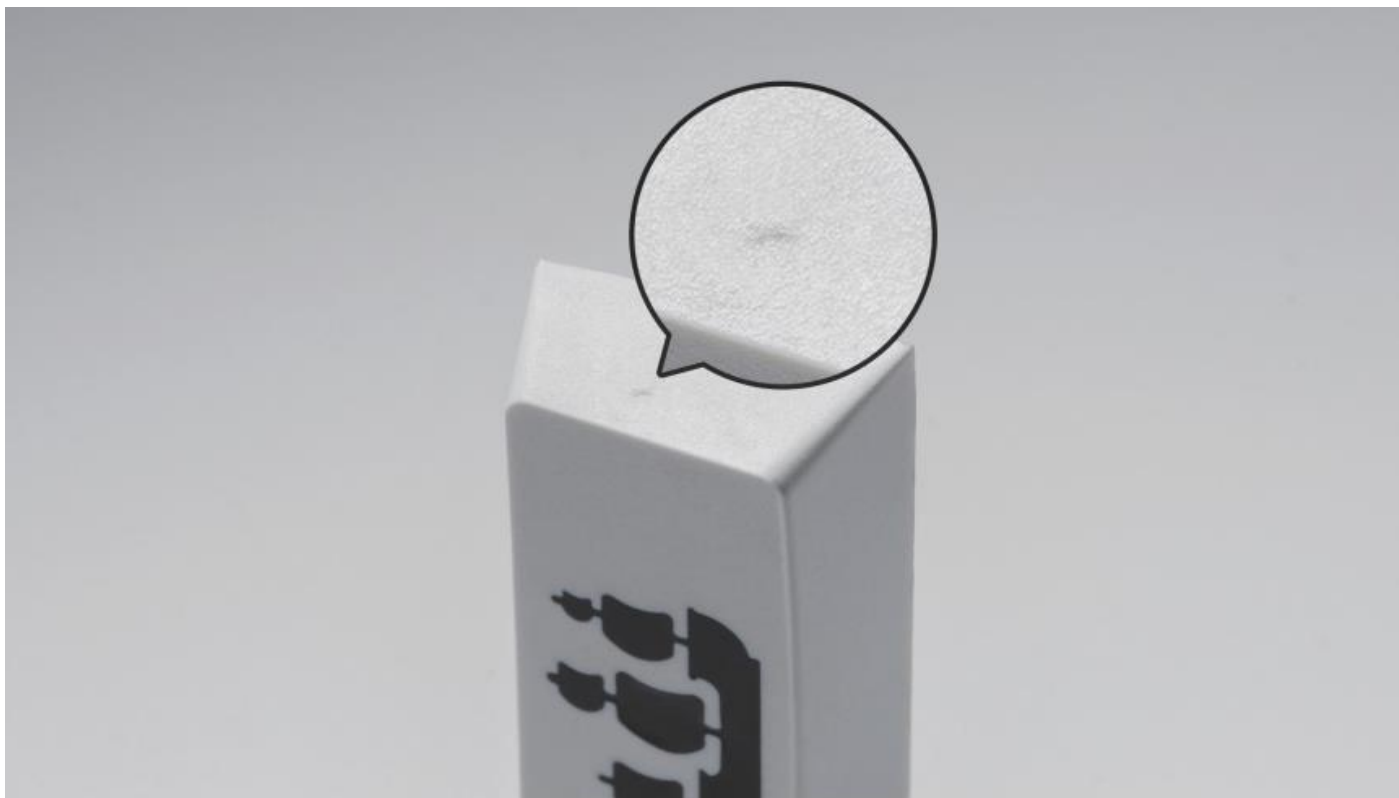
1. The material used in our keycaps has limitations, and there may be a slight shrinkage after molding. This may cause a minor deformation at both ends, but as long as the deformation is within $\leq 0.5\text{mm}$, it falls within the acceptable range of our quality inspection.



2. Stress marks on the sides of the keycaps may be present, which can be more noticeable in darker colors and under different lighting conditions.



3. The front of the keycaps is free of any defects, and any side defects $\leq 0.3\text{mm}^2$ are within the acceptable range of our quality inspection.



4. The position of the injection port may have small residuals on the front that can be easily removed without affecting the installation or use of the keycap.



5. Please note that due to production batches, there may be slight variations in color between sets of the same model. We cannot guarantee an exact match, but we strive to keep variations to a minimum.



6. There might be a slight burr on the edge of the keycap, but this will not be visible from the front after installation and should not affect the appearance or function of the keycap.



7. It is normal for the characters and patterns on the keycaps to fade due to light and alcohol, so please try to store and use them in a dry and cool environment, avoid sun exposure.

And only white keycap will add anti-UV, the other keycaps are not, avoid the keycap to become yellow.