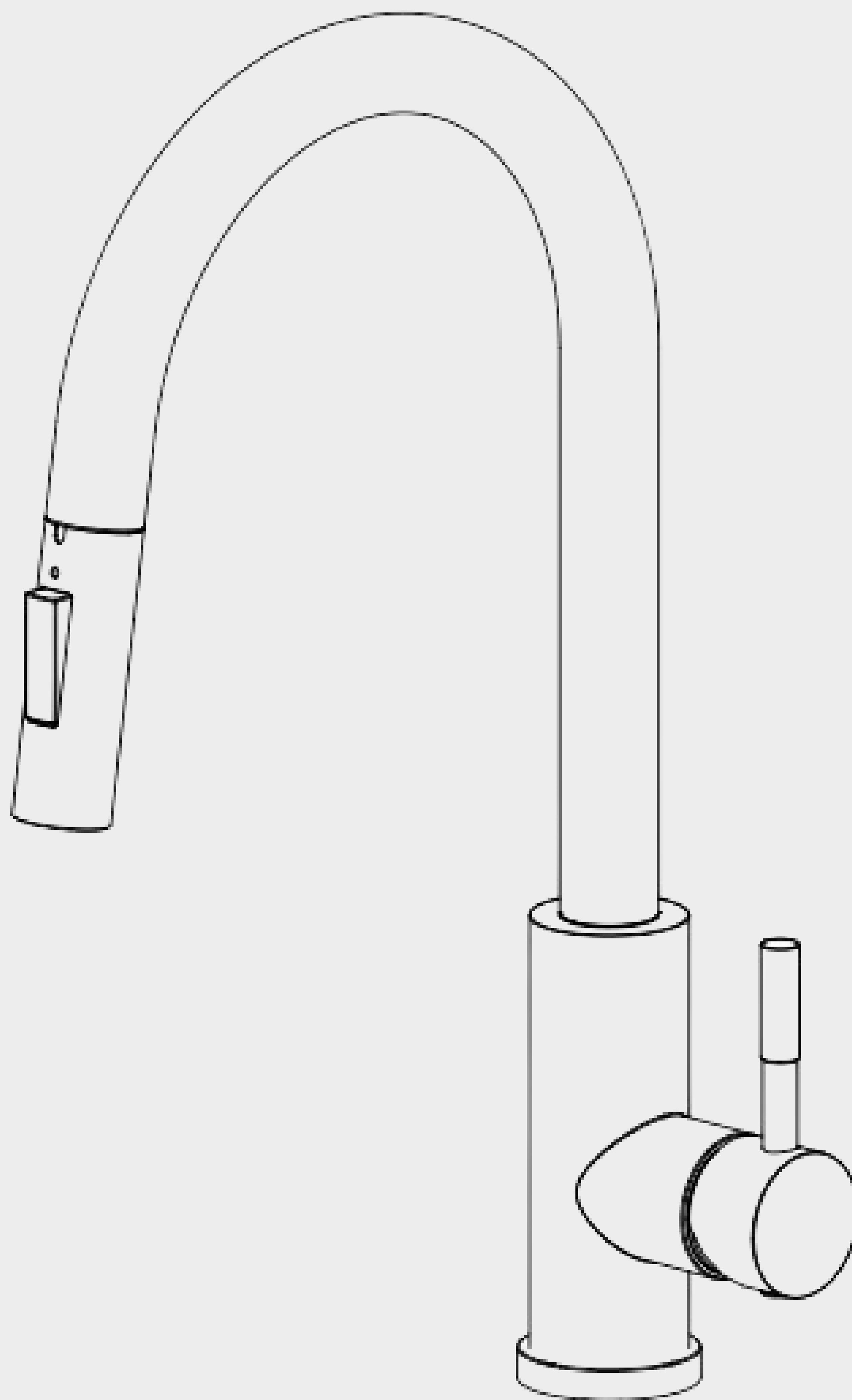


# IMPERIUM TOUCH SENSE

## Single Handle Pull-Out Sprayer Kitchen Faucet

### INSTALLATION MANUAL

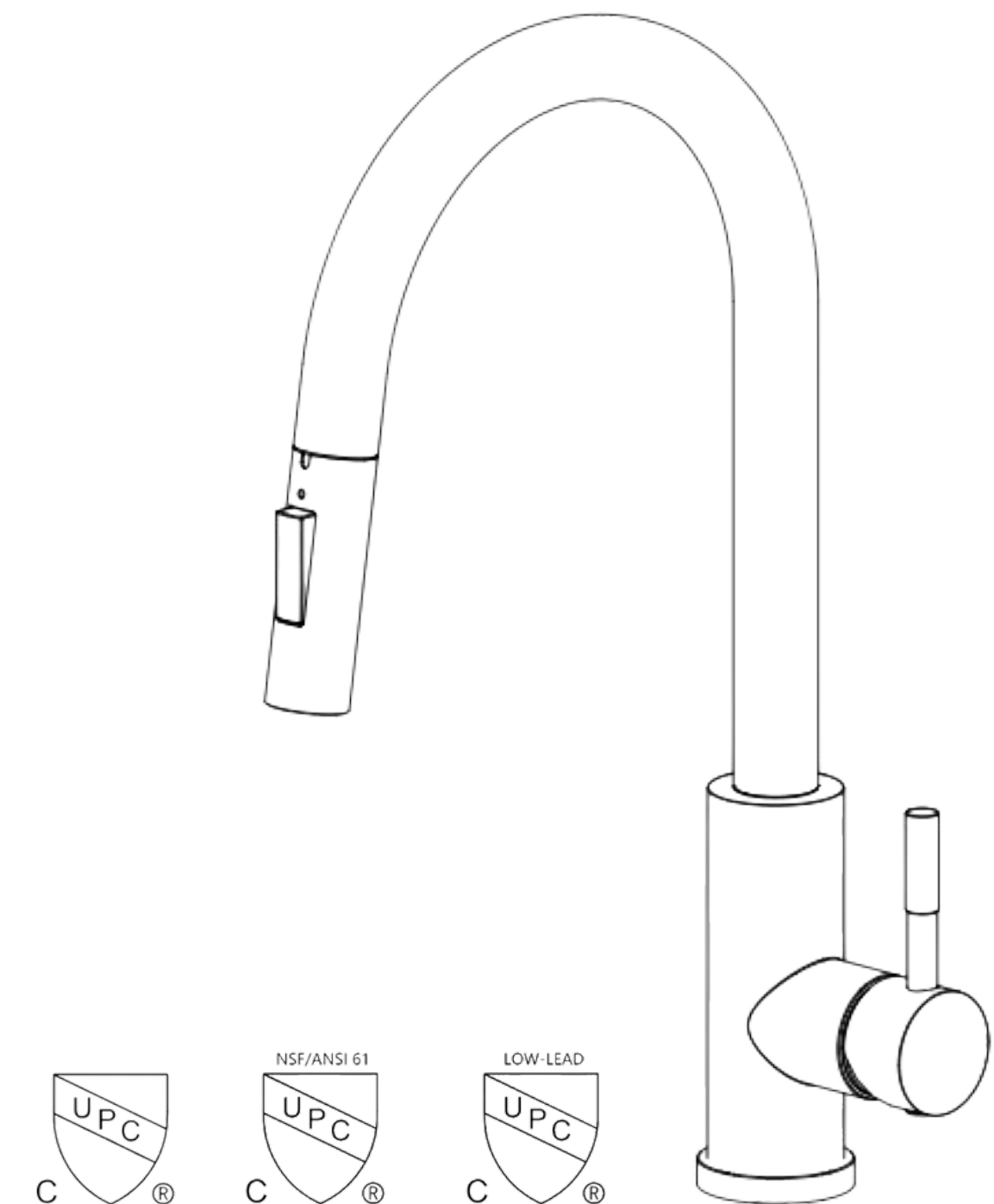


# IMPERIUM TOUCH SENSE

SKU-SF10000[1-5]

## Single Handle Pull-Out Sprayer Kitchen Faucet

- Stainless Steel Construction
- Lead-Free Compliant
- Touch Sense Technology
- Pull-Out Sprayer
- Dual Function Sprayhead: Aerated Flow / Powerful Spray
- Ceramic Disk Cartridge
- High-Arc 360° Swivel Spout
- Dual Lock - Magnetic Spout & Gravity Ball
- Powered by 4x AA Batteries (not included)



## COMPLIANCE

- CUPC
- AB1953
- NSF / ANSI 61

Water usage is limited to these maximum flow rates as indicated by the corresponding product markings

- North America: 1.8 GPM max (6.8L/min) @ 60psi
- California: 1.8 GPM max (6.8L/min) @ 60psi

## THANK ♥ YOU FOR CHOOSING SIGNATURE FAUCETS

We appreciate the trust and confidence you have placed in us. Our products are manufactured to the highest standards of quality and workmanship. However, if you are not satisfied with this product, please do not hesitate to contact us at [info@signaturefaucets.com](mailto:info@signaturefaucets.com) or scan the QR code in the quick links below to reach out to us. We are committed to addressing any concerns you may have and appreciate your feedback.

### ⚠ IMPORTANT

If you wish to return a product, please ensure that it is securely packed in its original box, along with all of its packaging materials and tags. To start the return process, you can either scan the QR code in the quick links below or visit our website at [SignatureFaucets.com](http://SignatureFaucets.com).

### ⚠ NOTE

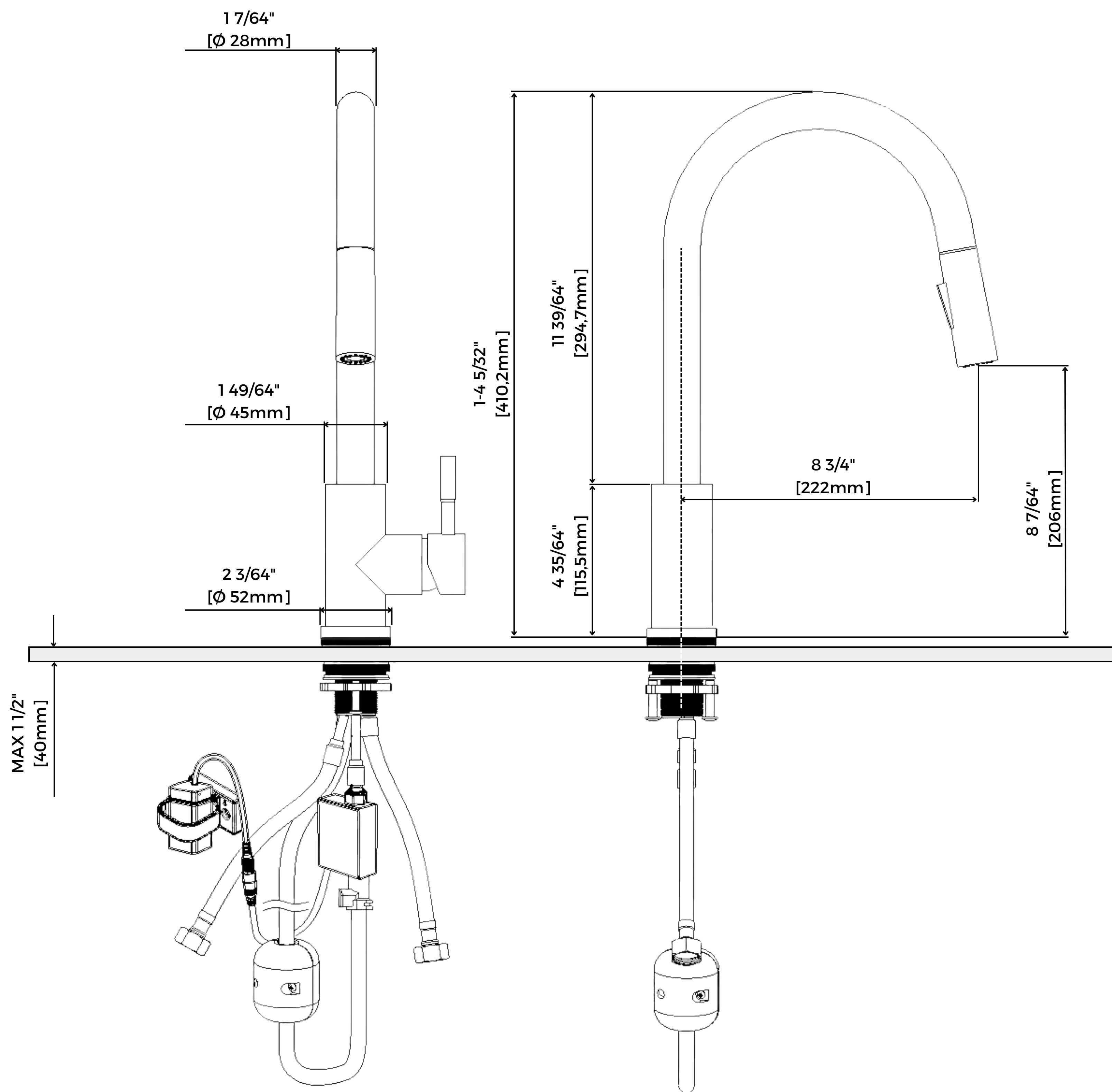
It is recommended to hire a professional plumber for all faucet installations and repairs.

## QUICK LINKS



NOTE: This installation manual is subject to change without further notice.

**SIZING & MEASUREMENTS**



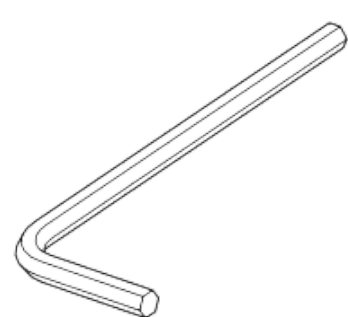
NOTE: Dimensions subject to change without notice.

**PRIOR TO INSTALLATION**

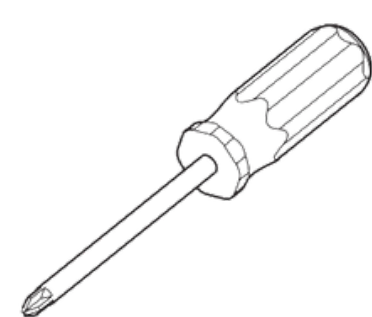
- Make sure you have all the necessary parts by checking the diagram and parts list.
- Turn off the hot and cold water supply at the angle stops and turn on the old faucet to release any built-up pressure. Remove the existing faucet. Clean the sink or countertop to remove debris, plumber's putty, or silicone.
- Flush angle stops to release any debris before installation.
- Pre-drilled hole size requirement: min 1-3/8" (35mm).
- Max countertop thickness: max 1-1/2" (40mm).
- Ensure water pressure is between 20-125 PSI (includes a combination of hot and cold feed lines).

**⚠ IMPORTANT**  
 To ensure a smooth installation process, kindly read all instructions prior to installation! Failure to do so could result in personal injury, property damage, or product failure. Please note that Signature Faucets will not be held responsible for any labor charges, damages incurred during installation, repair, or replacement, or any indirect, incidental, or consequential damages, losses, injury, or costs of any nature related to this faucet.

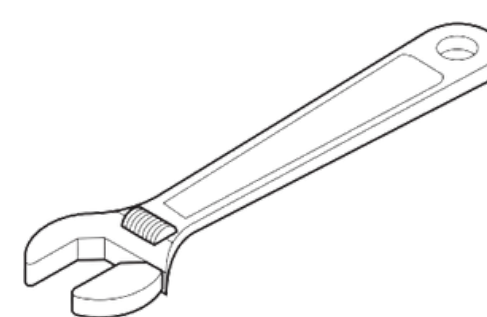
**TOOLS REQUIRED**



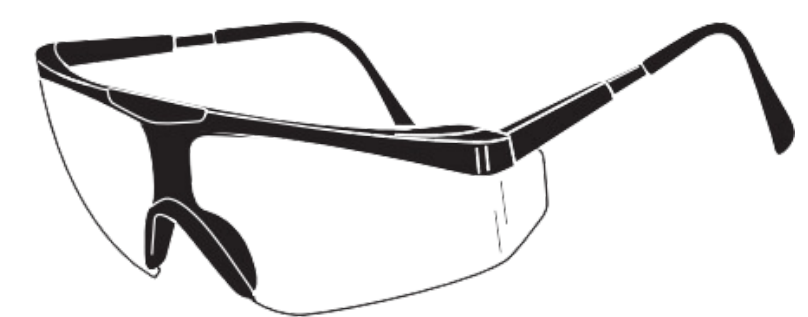
Hexagon Wrench



Philips Screwdriver

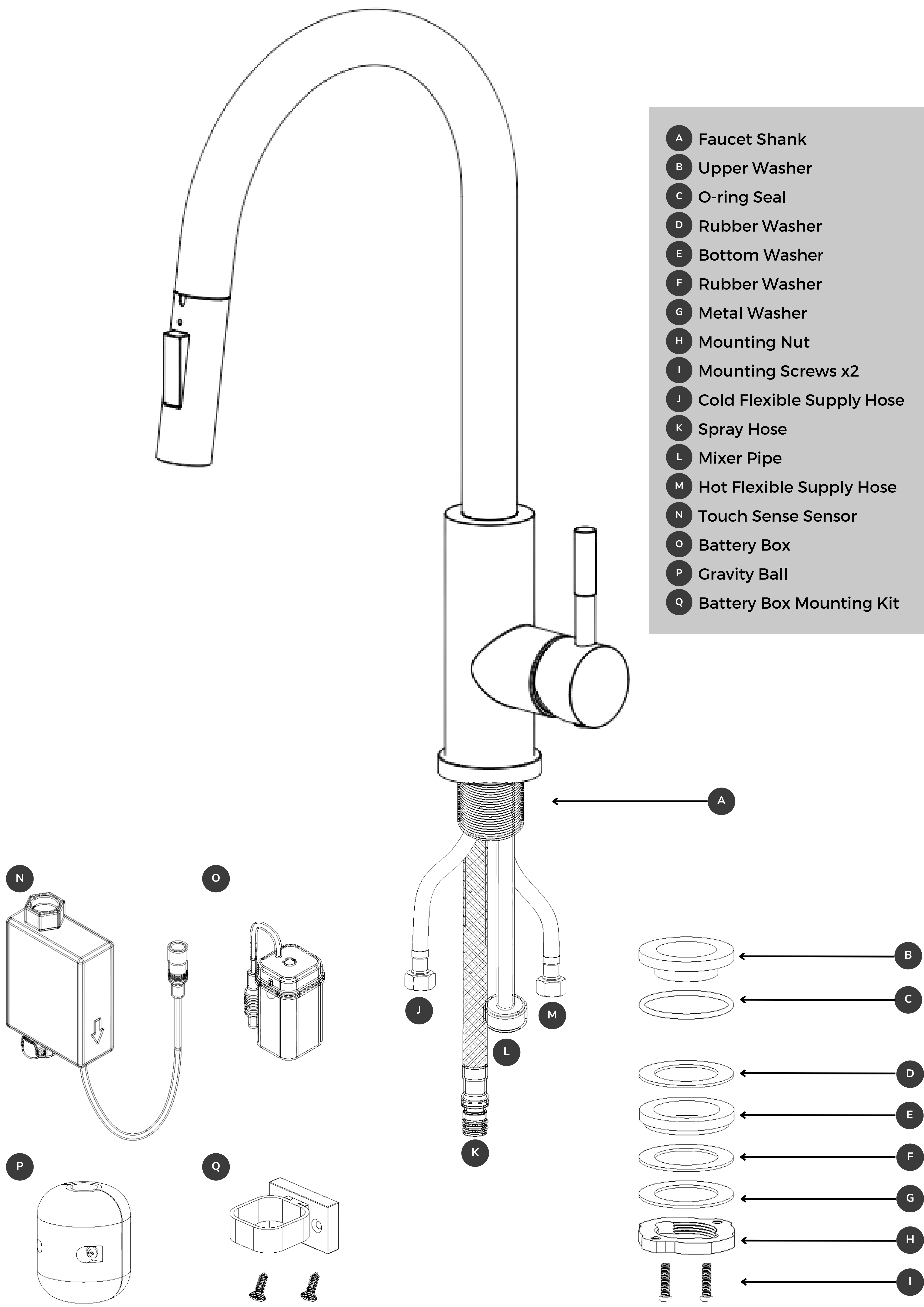


Adjustable Wrench



Safety Goggles

DIAGRAM & PARTS LIST

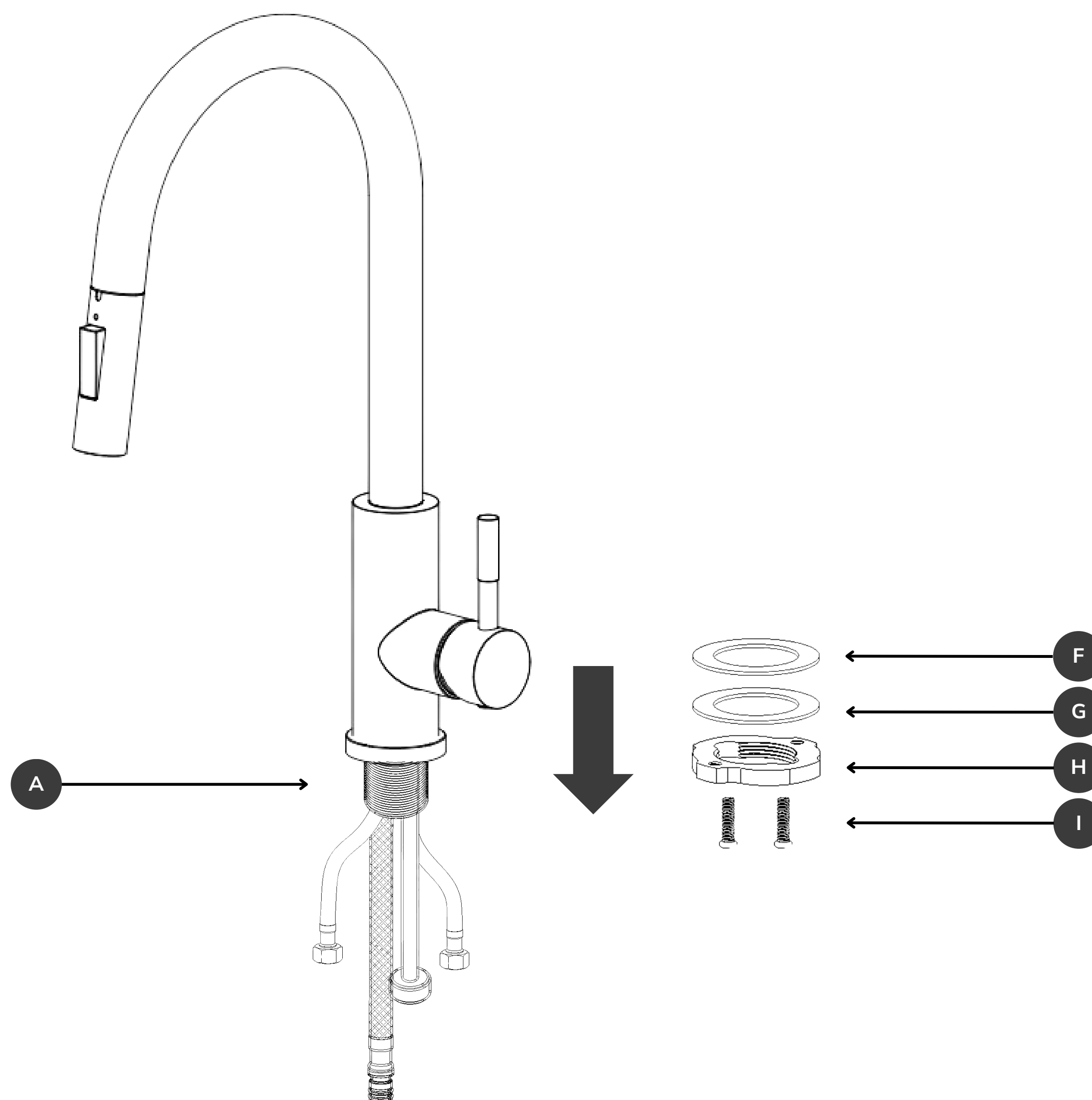


- A Faucet Shank
- B Upper Washer
- C O-ring Seal
- D Rubber Washer
- E Bottom Washer
- F Rubber Washer
- G Metal Washer
- H Mounting Nut
- I Mounting Screws x2
- J Cold Flexible Supply Hose
- K Spray Hose
- L Mixer Pipe
- M Hot Flexible Supply Hose
- N Touch Sense Sensor
- O Battery Box
- P Gravity Ball
- Q Battery Box Mounting Kit

1

## Remove Mounting Hardware

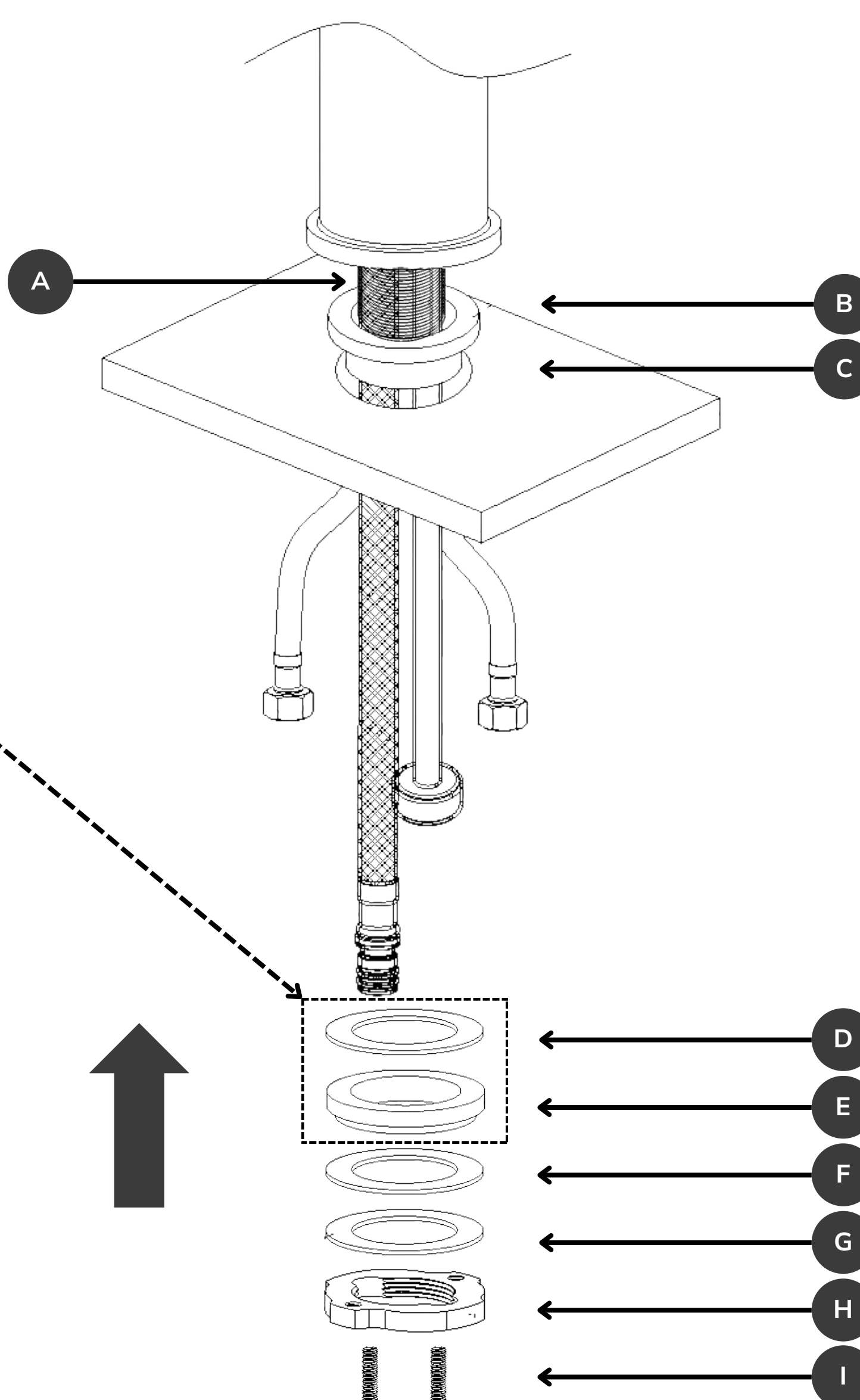
Remove any mounting hardware **B** - **I** from the faucet shank **A** if installed.



2

## Mount Faucet to Deck

Install the upper washer **B** and O-ring seal **C** on the faucet shank. Thread faucet tubes and shank through the surface mounting hole. Position, and secure the faucet using mounting hardware **D** - **H**. Tighten mounting nut **H** and screws **I** for secure installation.

**⚠ ATTENTION**

Do not discard, necessary for the installation of the Touch Sense sensor.

## 3

## Install Touch Sense Sensor

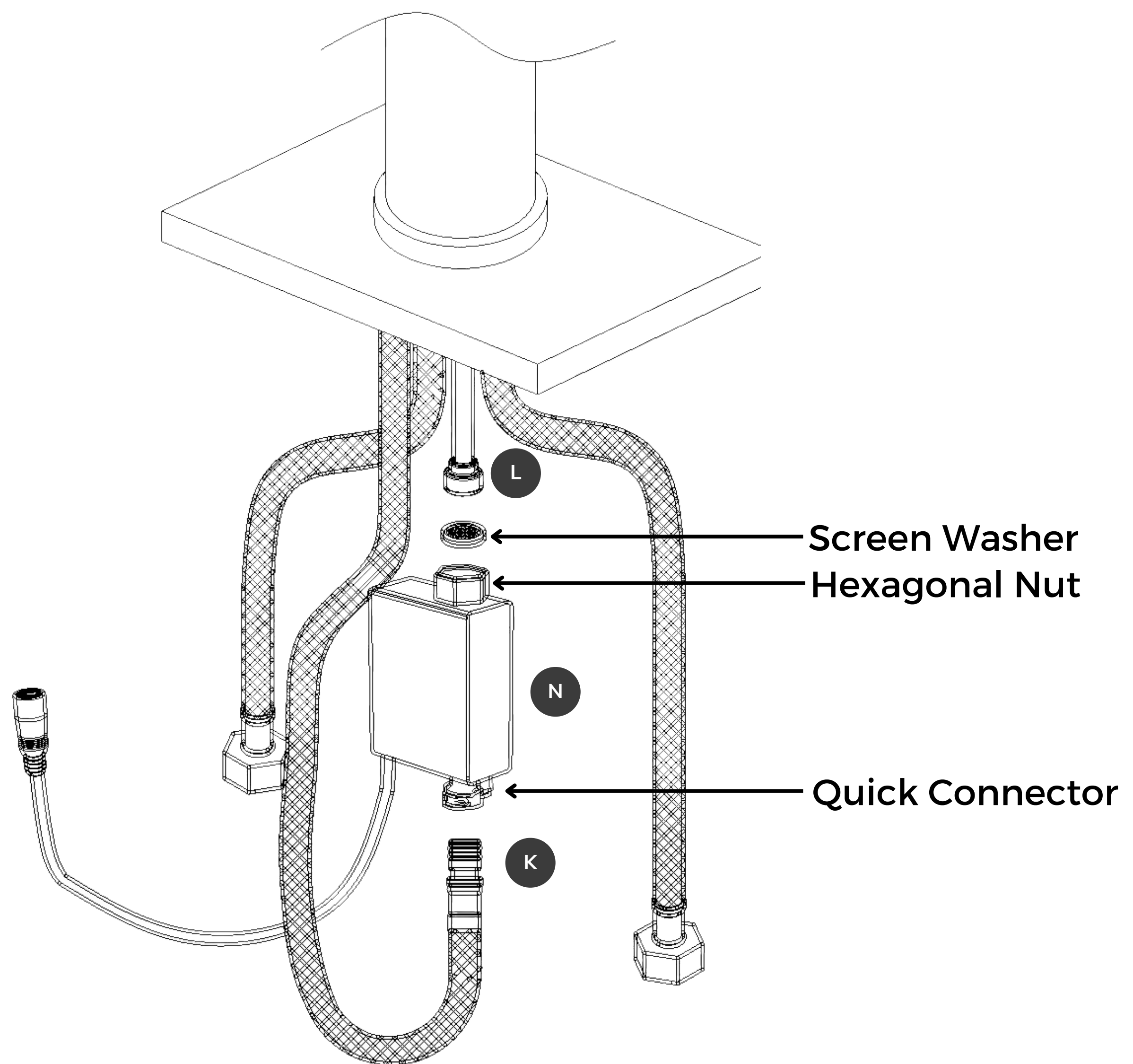
Connect the sensor **N** to the mixer pipe **L**, and tighten the hexagonal nut firmly. Then, attach the spray hose **K** to the quick connector of the sensor **N**.

## ⚠ CAUTION

To avoid any damage, please ensure that you only rotate the hexagonal nut of the sensor and not the sensor itself.

## ⚠ NOTE

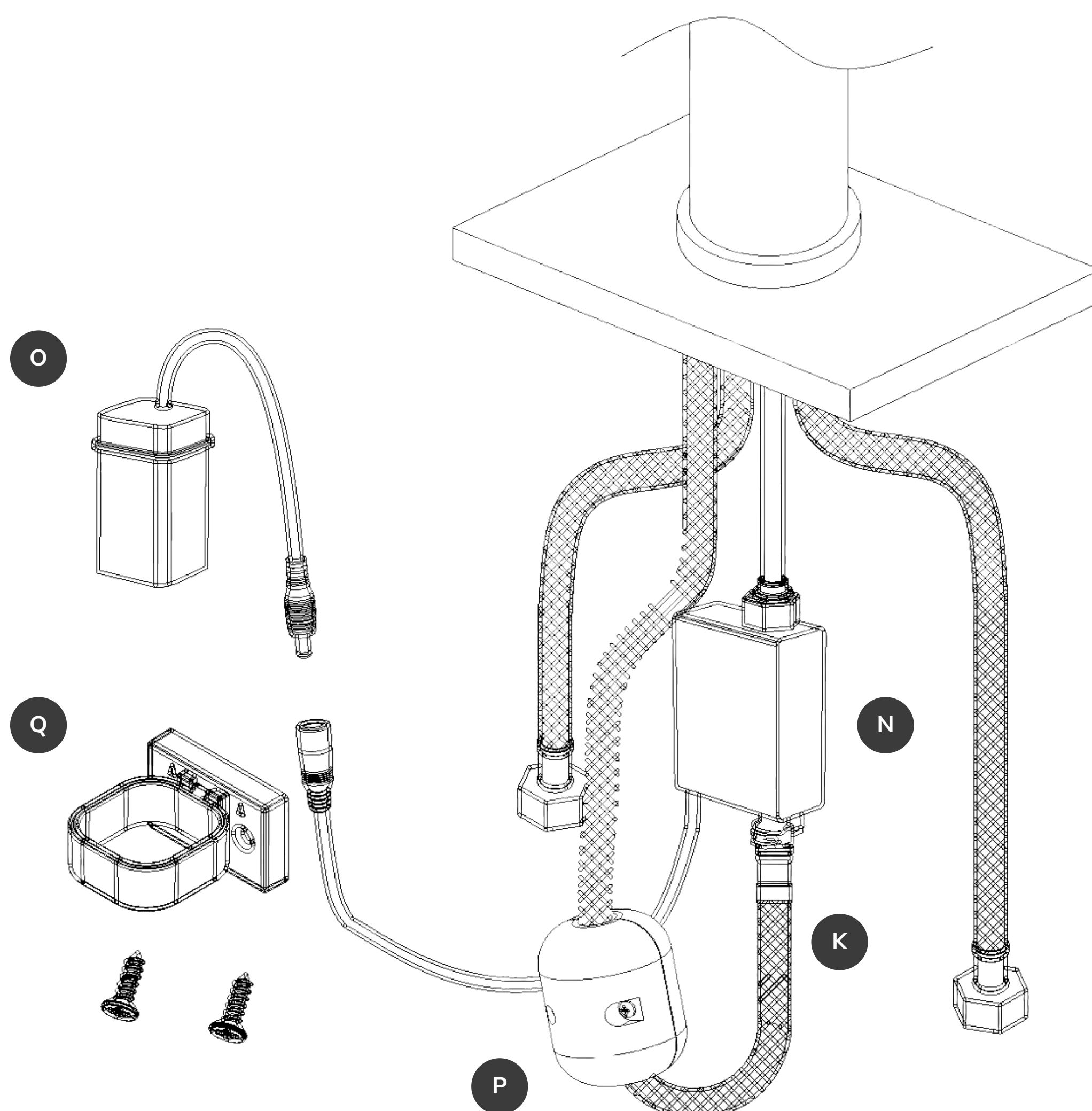
- It is highly recommended to close the faucet handle if not in use for an extended period of time.
- The touch switch will remain active even when the handle is closed.
- When the battery of the sensor is low or depleted, the touch switch remains open. Use the handle to control the faucet until you replace the battery.



## 4

## Install Battery Box &amp; Gravity Ball

Mount the battery box **o** using the mounting hardware **q** to the cabinet wall and connect it to the sensor **N**. On the spray side of the hose, measure 15" (38cm) down from the body of the faucet and install the gravity ball **p** at this point.



## ⚠ CAUTION

"AA" Batteries 1.5V Alkaline only (Last at least 1 year under normal use)

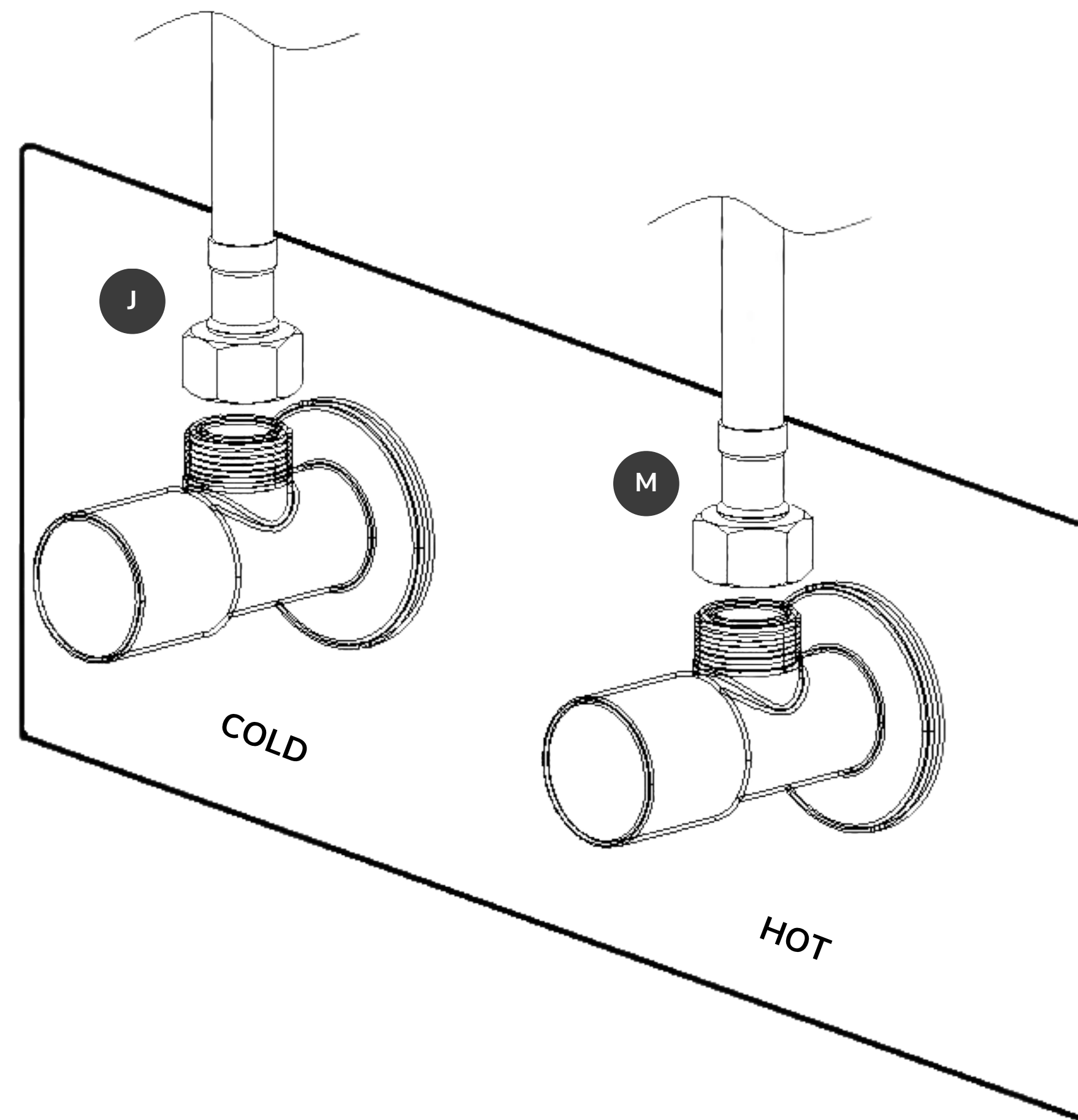
## ⚠ NOTE

- When installing the battery box, avoid exposing it to water and humidity.
- When installing the battery bracket, make sure the arrow on the surface faces upward and the height does not exceed 6 inches (15cm) from the cabinet floor.
- The battery must be installed with attention to the polarity of the positive and negative terminals, and it must not be installed in reverse.

5

**Connect Water Line**

Connect the hot and cold flexible supply hose **J**, **M** to their respective water outlets.

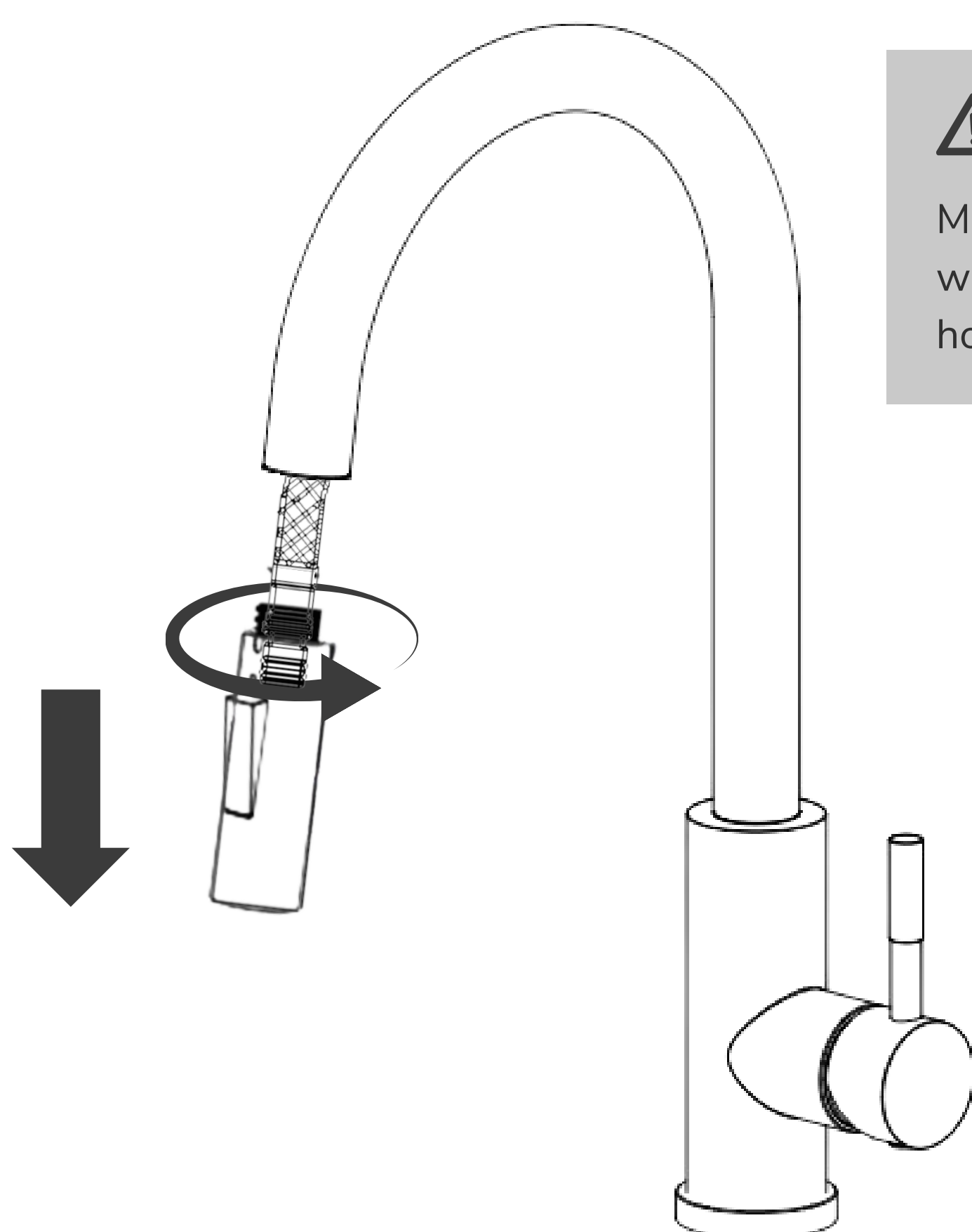


6

**Flush Out Debris**

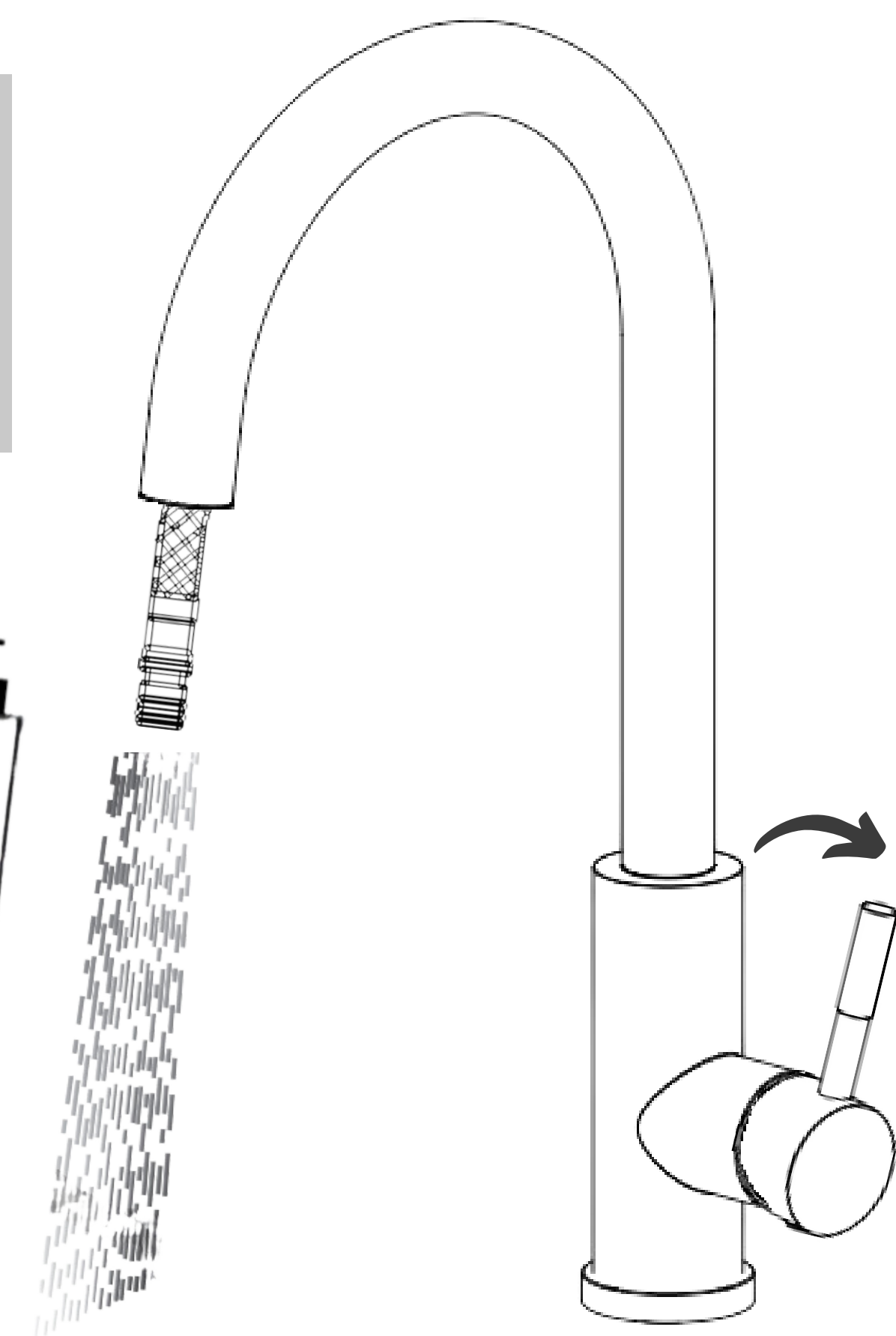
Grab the spray head hose, unscrew the spray head, and remove it along with the rubber washer. Turn on the faucet and let the water run for a minute to flush out debris. Turn off the faucet and re-install the rubber washer and spray head.

1



2

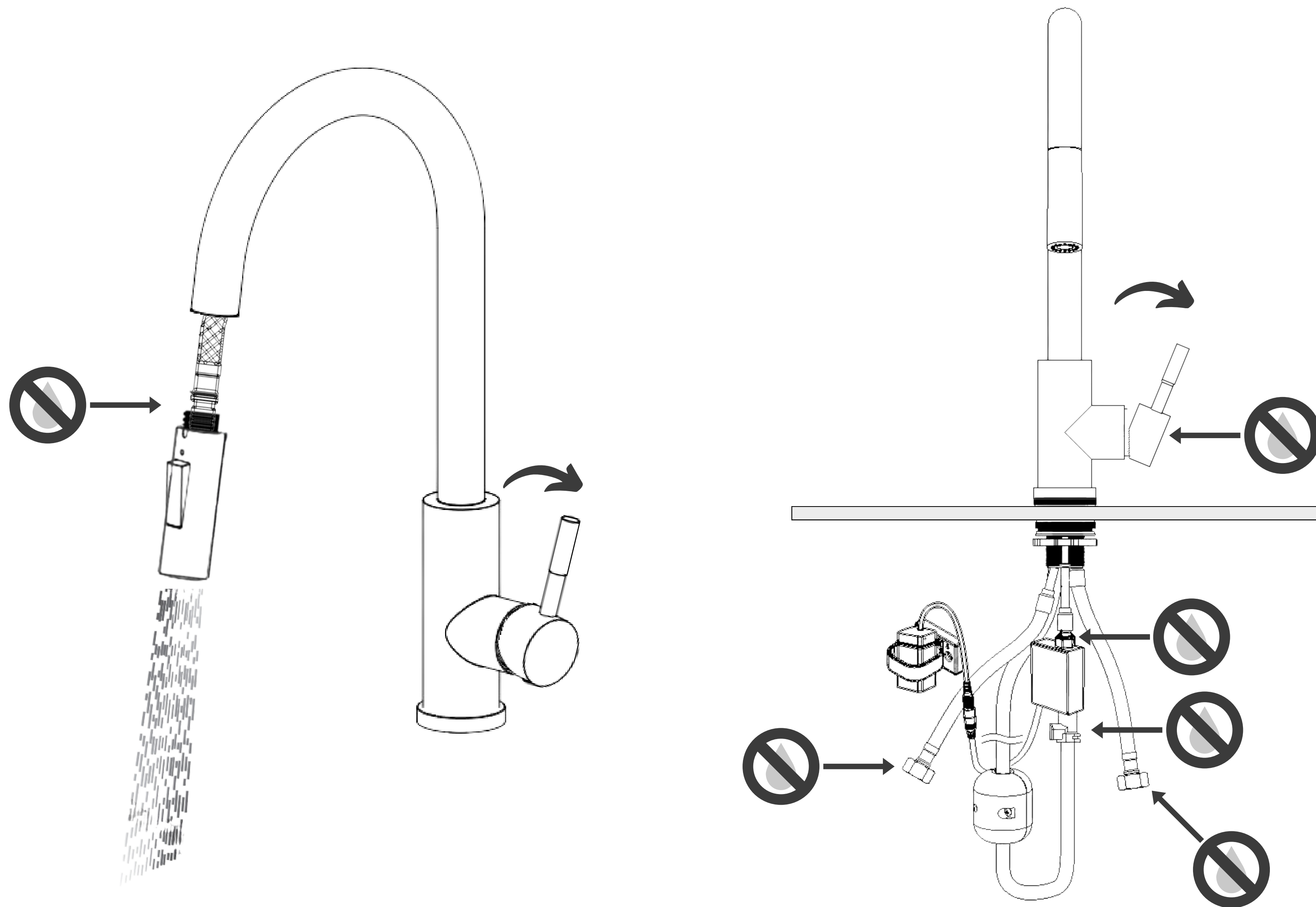
**⚠ IMPORTANT**  
Make sure the rubber washer is installed when attaching the spray head to the hose.



## 7

## Check for Leaks

Check connections at arrows for leaks, and retighten if needed. If still leaking, inspect the seals for damage. Pull the spray head from the spout and use the trigger to switch between aerator and spray.



## Quick Tips for your Touch Sense Kitchen Faucet

- Simply turn the handle on and tap anywhere on the faucet body to operate.
- The faucet distinguishes between a touch and a grab, preventing unwanted on/off switching.
- Use the handle to easily control both the temperature and volume, on both manual and electronic operations.
- Touch Sense sensor will automatically shut off after discharging water for more than 3 minutes.

## CLEANING &amp; CARE

Clean the faucet daily to avoid build-up of soap or mineral deposits, as these tend to have an adverse effect on the appearance of the faucet. For typical cleaning, wipe the faucet well with a damp cloth and dry thoroughly with a soft towel. Drying helps avoid water spots.

## ⚠ NOTE

It is recommended to use SOFT 99 WAX on chrome finish only. To clean the faucet, apply the cleaning solution to a cloth instead of directly spraying it on the faucet.

For major stains or grime on your faucets, a mixture of half a cup of white vinegar and a half cup of water will help. Dip a cloth into the solution and rub away the grime or stain. The solution should then be rinsed off and dried to prevent damage to the finish of the faucet. Another solution for major grime or stains is a small amount of baking soda and water. This should remove any nasty stains. Again, the solution should then be rinsed off and dried to prevent damage to the finish of the faucet.

## ⚠ CAUTION

**DO NOT USE** cleaning products containing ammonia, bleach, alcohol, or other harsh chemicals.  
**DO NOT USE** any form of abrasives (e.g. abrasive sponges or steel wool).