

# SO WATT

## Half Moon Handles



Designed + Made by So Watt in Australia.

The PULL Handle Range is the easiest way to add style and character to your cabinets.

Available in a range of sizes and finishes, The PULL Half Moon Handles can be easily fixed to any cupboard door, drawer front, kitchen cabinet or storage unit.

- Comes in a range of finishes or raw for diy.
- Handles can be made with copper or brass front plates.
- Each pair comes with two different screw lengths to suit multiple door thicknesses
- Mounting template included, and can be download online.
- Shop more options online at [sowatt.com.au](http://sowatt.com.au)

Lead Time: 1-2 weeks including delivery within Australia.



2 Year Commercial Warranty



Fast and Easy Install

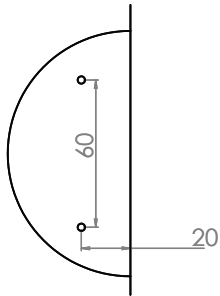


# 50 WATT

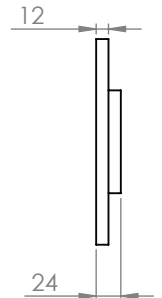
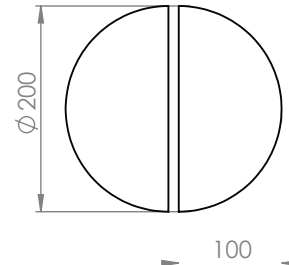
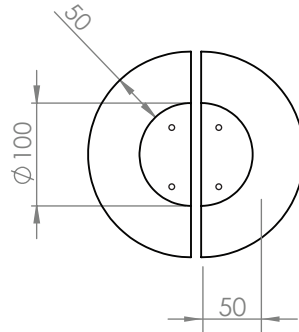
# Half Moon Handles

## Large

Each half moon is 100mm wide x 200mm tall x 24mm thick with a 12mm gap for fingers.

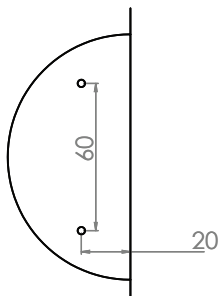


Screw Mounting position  
60mm between holes

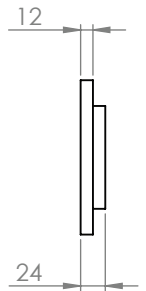
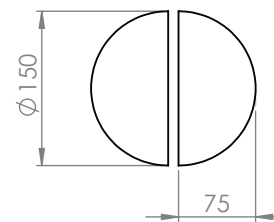
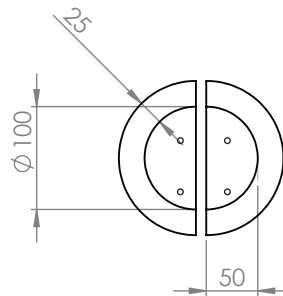


## Medium

Each half moon is 75mm wide x 150mm tall x 24mm thick with a 12mm gap for fingers.

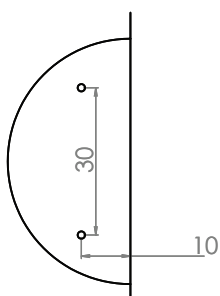


Screw Mounting position  
60mm between holes

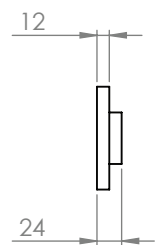
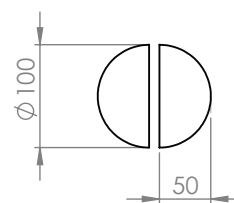
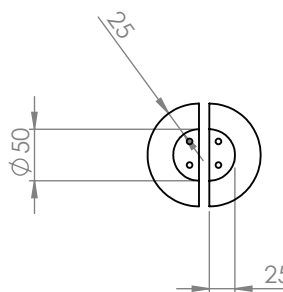


## Small

Each half moon is 50mm wide x 100mm tall x 24mm thick with a 12mm gap for fingers.



Screw Mounting position  
30mm between holes



Black and white finishes show some wood grain and texture through the coated layer allowing some resemblance of the ply to show through



Black



White



Clear



Raw

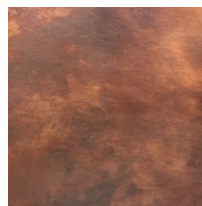
Copper and Brass 1 mm plates attached to the front faces of the handles come sealed with a metal specific wax that is invisible to prevent the metal from oxidizing and corroding, however some patina will occur on the metal after some time.



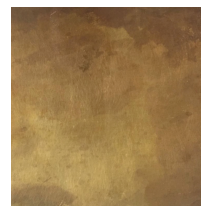
Sealed Copper



Sealed Brass



Patina effect on Copper



Patina effect on Brass



**Custom Design**  
Our pieces are hand made to order. Custom sizes and finishes are available. Phone or email the team for custom requests.  
[info@sowatt.com.au](mailto:info@sowatt.com.au)  
(02) 8960 5756



**International Orders**  
International Shipping is available on request. Please contact the team for a quote.



We encourage re-use and recycling of our Pieces. New components are available to extend the life of your So Watt piece and we accept returns for conscious disposal and donation.