

# MYTH | G-Spot Vibrator

CARE AND INSTRUCTION MANUAL

# VUSH™

## HEY BABE, COME HERE OFTEN?

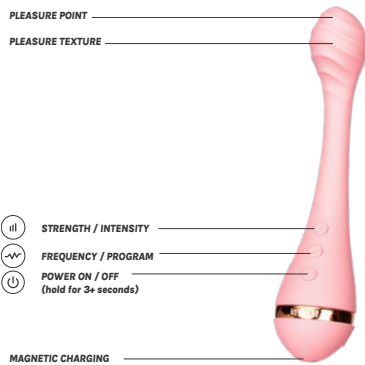
Welcome to your self love journey! We're so excited to introduce you to Myth. She's bold, powerful, and has a secret; she knows exactly where the g-spot is.

Myth is a powerful internal g-spot vibrator that's all about discovering the depths of your pleasure and claiming your inner power. Myth has 5 varying levels and 5 different patterns to explore with, and you can tell both sides of your body's story with internal and external use capabilities. No knights in shining armor needed here, you're about to be your own hero.

## WHAT IS A G-SPOT VIBRATOR?

A g-spot vibrator is an internal vibrator specifically designed to stimulate internal pleasure zones like the g-spot and p-spot, and can also be used anally in general. They can be used for external stimulation and internal stimulation.

## TURN ME ON



Turn on Myth by holding (⏻) for 3 seconds  
Choose pattern by short pressing (🔊)  
Set intensity level by short pressing (||)  
Turn off Myth by holding (⏻) for 3 seconds

## YOU'RE IN CHARGE

Before we can get down to the good stuff, your Myth will need to charge for 2 hours.

Insert the main USB plug into any USB port. Connect the charger with the charge port on your Myth (those two fancy silver dots). You'll feel a slight pull and a click, followed by your Myth LED light flashing to let you know it's charging. Catch up on that show you've been meaning to watch - it won't be long! The LED will stop flashing when your Myth is ready to play. For best performance, we recommend only charging your Myth with the provided Vush charger.

## GOOD CLEAN FUN

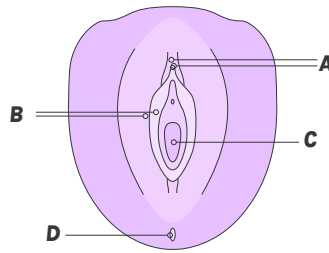
First thing's first: Always clean your Myth thoroughly before and after each use. It's waterproof, so cleaning couldn't be easier. Simply wash Myth with clean warm water and soap, then rinse and pat dry with a lint-free towel or cloth. Ta da!

Focus some extra attention on the ridges of the texture to make sure they're super clean.

For those times when you need something quick and discreet (like when your roommate is using the bathroom for karaoke practise), you can also use a gentle wet wipe, like Vush You Do You wipes.

To show your Myth a little more love and care, store in a Vush Storage Bag to avoid dust build up or damage from other materials, and to keep it safe from sunlight or other extreme heats.

## HOW DO I USE IT? (FOR PEOPLE WITH VULVAS)



### A. CLITORIS + CLITORAL HOOD

Touch Pleasure Point directly to clitoris, or to clitoral hood if direct clitoral stimulation is too intense.

### B. LABIA + VULVA

Pleasure Point can be moved around labia majora, labia minora, or the vulva in whatever way feels good.

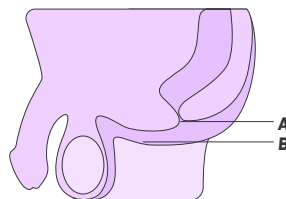
### C. VAGINA

Myth has been designed to specifically hit the g-spot. The g-spot is an area of nerve endings located along the front wall of the vagina/at the back of the clitoral network. Everyone's anatomy is different, but the g-spot is usually located about an inch or so inside the vaginal opening on the upper wall. It can only be accessed when aroused. Warm up the entire vulva and use lube before inserting Myth with the textured pattern facing upwards. The textured head will help to create a more intense sensation against the g-spot. You should be looking for a firm, pressing sensation, and to imitate a 'come hither' motion with the toy.

### D. ANALLY

Anal orgasms in people with vulvas are had by indirectly stimulating the 'a-spot' through the anus. Ease into anal play by beginning with fingers and stimulating the external part and anal opening first. Once it feels comfortable, apply a water-based lubricant and slowly insert Myth with the textured head facing inwards and you should be looking for a pressing sensation.

## HOW DO I USE IT? (FOR PEOPLE WITH PENISES)



### A. ANALLY (P-SPOT/ PROSTATE)

Myth has also been designed as a p-spot vibrator for people with prostates. The prostate gland is located just below the bladder and is roughly the size of a walnut, it is located about two inches inside the anus. Ease into anal play by beginning with fingers and stimulating the external part and anal opening first. Once it feels comfortable, apply a water-based lubricant and slowly insert Myth with the textured head facing inwards, once inserted, the head of the Myth will press against this spot.

### B. PERINEUM

The perineum is a small, nerve packed area between the genitals and anus, or the scrotum and anus. Avoid 'digging in' or 'poking' and apply Myth sideways, the way a thumb pad might sit.

## SAFETY FIRST

Myth is for adult use only. Keep out of reach of children.

Those who may be pregnant, have a pacemaker, diabetes, phlebitis, thrombosis, or any other condition, should consult with a medical professional regarding the risk of blood clots before using any personal massage product.

Do not use on areas that have pre-existing injuries or on swollen skin.

For some, excessive use of vibrating devices can cause temporary numbness and loss of sensitivity. If this happens, take a break and treat yourself to another self love practice.

If pain occurs please cease use immediately.

Consult a doctor before use if you have any implanted devices, such as a pacemaker, or if you have had any form of surgery on the relevant body parts.

Vush assumes no responsibility for misuse or excessive use of this product.

Always switch off after use.

## SPECS

PRODUCT SIZE: 200mm x 46mm x 33.6mm	POWER INPUT: 5V
MATERIAL: Medical grade silicone/ ABS Case	BATTERY TYPE: Polymer lithium battery
PRODUCT WEIGHT: 198g	FREQUENCY: 5 levels and 5 patterns
WATERPROOF: IPX7	NOISE: Less than 50db
CHARGE TIME: 120 minutes	USE TIME: 120 minutes
LOW BATTERY WARNING	MAGNETIC CHARGING

## DISPOSAL ADVICE

Dispose of according to your local regulations.

## WARRANTY

We provide a 1 year customer warranty from when you first purchased your product. After 1 year from your initial purchase we have no obligation to send you replacement items even if previous ones were sent.

We recommend familiarizing yourself with our Terms and Conditions via [vushstimulation.com/pages/warranty-refund-policy](https://vushstimulation.com/pages/warranty-refund-policy)

GET IN TOUCH  
vushstimulation.com  
info@vushstimulation.com  
FOLLOW OUR MOVEMENT AND  
EMBRACE #MORESELFFLOVE  
@VUSH\_OFFICIAL

Vush Pty Ltd  
PO Box 2023 Prahran VIC 3181

All trademarks are property of Vush Pty Ltd  
Designed in Australia, made with love in China

