



EMPRESS 2 CARE AND INSTRUCTION MANUAL

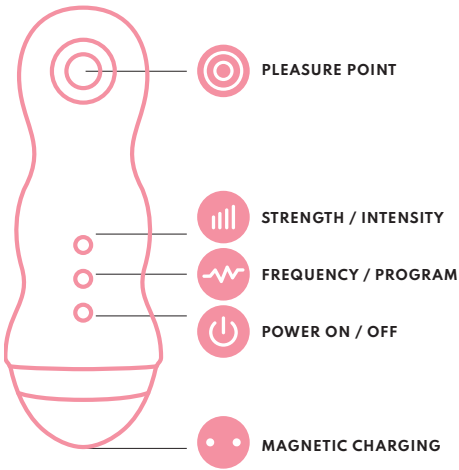
HEY BABE, COME HERE OFTEN?

Welcome to your self love journey! We're so excited to introduce you to your new toyfriend, Empress 2.

Empress 2 is a clitoral vacuum stimulator that uses enhanced vacuum technology to help you reach a whole new level of self love. It mimics really good oral sex - but without any strings attached.

We know your body is unique, so we've created 8 varying patterns and 5 differing levels for you to explore and play with to find your perfect match. Get ready to fall in love with self love, because this baby is a pleasure game changer.

CHECK ME OUT



YOU'RE IN CHARGE

Before we can get down to the good stuff, your Empress 2 will need to charge for 1.5 hours.

Insert the main USB plug into any USB port. Connect the charger with the charge port on your Empress 2 (those two fancy silver dots). You'll feel a slight pull and a click, followed by your Empress 2 LED lights flashing to let you know it's charging. Catch up on that show you've been meaning to watch while you wait - it won't be long! The LED lights will stop flashing when your Empress is ready to play.

For best performance, we recommend only charging your Empress 2 with the provided Vush charger.

TURN ME ON

Charge Empress 2 for 1.5 hours to reach full charge.

Press and hold to turn on.

Press to increase intensity level.

Press to discover all 8 pattern settings.

Make some magic!

Press and hold to turn off.

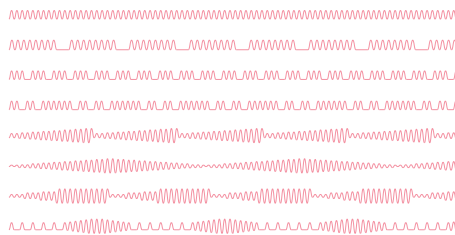
PLEASURE TO MEET YOU

Settle in, get comfortable, and turn on your Empress 2. Choose your fave starting pattern + level. Empress 2 is designed for clitoral stimulation, but its vacuum technology means you can use it on any area you can achieve suction.

Position the pleasure point over your selected area and apply a small amount of pressure to create a seal. Explore different levels and patterns to find how to best love yourself! Don't thank us, thank yourself.

If you'd like extra lubrication for your Empress 2, you can apply a small amount of lube or intimate gel to the outside of the pleasure point ring. It's important to only use water-based products like Vush Feelin' Myself Intimate Gel with your Empress 2. Other oils, creams, or silicone-based lubricants can damage the high-grade silicone of your toy over time.

PATTERNS



GOOD CLEAN FUN

First thing's first: Always clean your Empress 2 thoroughly before and after each use. It's waterproof, so cleaning couldn't be easier. Simply wash your Empress with clean warm water and soap, then rinse and pat dry with a lint-free towel or cloth. Ta da!

For those times when you need something quick and discreet (like when your roommate is using the bathroom for karaoke practise), you can use a Vush You Do You wipe.

To show your Empress 2 a little more love and care, gently wipe the inside of the pleasure point with a cotton swab and store in a Vush Storage Bag to avoid dust build up or damage from other materials, and to keep it safe from sunlight or other extreme heats.

SAFETY FIRST

Empress 2 is for adult use only. Keep out of reach of children.

Those who may be pregnant, have a pacemaker, diabetes, phlebitis, thrombosis, or any other condition, should consult with a medical professional regarding the risk of blood clots before using any personal massage product.

Empress 2 is for external use only.

Do not use on areas that have pre-existing injuries or on swollen skin.

For some, excessive use of vibrating devices can cause temporary numbness and loss of sensitivity. If this happens, take a break and treat yourself to another self love practice.

In very rare circumstances or on certain body types with protruding clitoris or large labia, suction vibrators can occasionally cause pain and discomfort in higher settings. If pain occurs please cease use immediately.

Consult a doctor before use if you have any implanted devices, such as a pacemaker, or if you have had any form of surgery on the relevant body parts.

Vush assumes no responsibility for misuse or excessive use of this product.

Always switch off after use.

DISPOSAL ADVICE

Dispose of according to your local regulations.

SPECS

PRODUCT SIZE: 117.3mm x 41.1mm x 54.3mm	POWER INPUT: 5V
MATERIAL: Medical grade silicone/ ABS	BATTERY TYPE: Flexible polymer lithium battery
PRODUCT WEIGHT: 87g	FREQUENCY: 8 patterns + 5 levels
WATERPROOF: IPX7	BATTERY CAPACITY: 400mAh
CHARGE TIME: 80-100 minutes	WORKING CURRENT: 180mAh
USE TIME: 100 minutes	MOTOR SPEED: 6500rpm
NOISE: Less than 50db	MOTOR MODEL: #050
LOW BATTERY WARNING	MAGNETIC CHARGING

WARRANTY

We provide a 1 year customer warranty from when you first purchased your product. After 12 months from your initial purchase we have no obligation to send you replacement items even if previous ones were sent.

We recommend familiarizing yourself with our Terms and Conditions via vushstimulation.com/pages/warranty-refund-policy

GET IN TOUCH

Vush Pty Ltd
Suite 8 545 St Kilda Rd
MELBOURNE VIC 3004 AUS

Website: vushstimulation.com

Support: info@vushstimulation.com

FOLLOW OUR MOVEMENT AND
EMBRACE #MORESELFFLOVE

VUSH_OFFICIAL

All trademarks are property of Vush Pty Ltd
Designed in Australia, made with love in China

