

EMPRESS 2 | Clitoral Suction Vibrator

CARE AND INSTRUCTION MANUAL

VUSH™

HEY BABE, COME HERE OFTEN?

Welcome to your self love journey! We're so excited to introduce you to your new boyfriend, Empress 2.

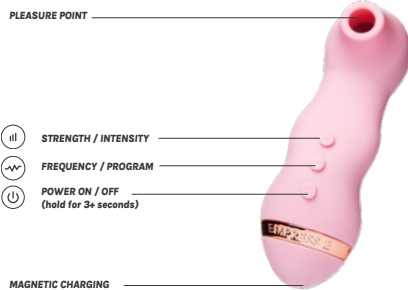
Empress 2 is a clitoral vacuum stimulator that uses enhanced vacuum technology to help you reach a whole new level of self love. It mimics really good oral sex - but without any strings attached.

We know your body is unique, so we've created 8 varying patterns and 5 differing levels for you to explore and play with to find your perfect match. Get ready to fall in love with self love, because this baby is a pleasure game changer.

WHAT IS A SUCTION VIBRATOR?

Designed specifically for the clitoris, suction vibrators use vacuum suction/air pulse technology to produce waves of sensation. Instead of vibrating directly against the clit, suction vibrators create a seal around the clitoral glans and send air sensation that mimics oral sex.

TURN ME ON



Turn on Empress 2 by holding for 3 seconds
Choose pattern by short pressing
Set intensity level by short pressing
Turn off Empress 2 by holding for 3 seconds

YOU'RE IN CHARGE

Before we can get down to the good stuff, your Empress 2 will need to charge for 1.5 hours.

Insert the main USB plug into any USB port. Connect the charger with the charge port on your Empress 2 (those two fancy silver dots). You'll feel a slight pull and a click, followed by your Empress 2 LED lights flashing to let you know it's charging. Catch up on that show you've been meaning to watch while you wait - it won't be long! The LED lights will stop flashing when your Empress is ready to play.

For best performance, we recommend only charging your Empress 2 with the provided Vush charger.

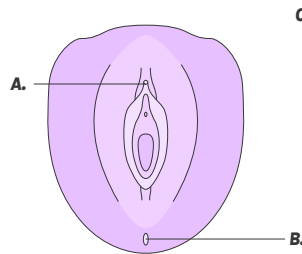
GOOD CLEAN FUN

First thing's first: Always clean your Empress 2 thoroughly before and after each use. It's waterproof, so cleaning couldn't be easier. Simply wash your Empress with clean warm water and soap, then rinse and pat dry with a lint-free towel or cloth. Ta da!

For those times when you need something quick and discreet (like when your roommate is using the bathroom for karaoke practise), you can use a Vush You Do You wipe.

To show your Empress 2 a little more love and care, gently wipe the inside of the pleasure point with a cotton swab and store in a Vush Storage Bag to avoid dust build up or damage from other materials, and to keep it safe from sunlight or other extreme heats.

HOW DO I USE IT? (FOR PEOPLE WITH VULVAS)



A. CLITORIS

Position the head/mouth of the toy on the clitoris, only applying a small amount of pressure to create a seal on the clitoral glans. Try holding horizontally or vertically.

B. ANUS

Position the head/mouth of the toy on the outside of the anal opening only. Not designed for internal use.

C. REST OF THE BODY

Position the head/mouth of the toy on the nipple, only applying a small amount of pressure to create a seal. Try holding horizontally or vertically.

SAFETY FIRST

Empress 2 is for adult use only. Keep out of reach of children.

Those who may be pregnant, have a pacemaker, diabetes, phlebitis, thrombosis, or any other condition, should consult with a medical professional regarding the risk of blood clots before using any personal massage product.

Empress 2 is for external use only.

Do not use on areas that have pre-existing injuries or on swollen skin.

For some, excessive use of vibrating devices can cause temporary numbness and loss of sensitivity. If this happens, take a break and treat yourself to another self love practice.

In very rare circumstances or on certain body types with protruding clitoris's or large labia, suction vibrators can occasionally cause pain and discomfort in higher settings. If pain occurs please cease use immediately.

Consult a doctor before use if you have any implanted devices, such as a pacemaker, or if you have had any form of surgery on the relevant body parts.

Vush assumes no responsibility for misuse or excessive use of this product.

Always switch off after use.

SPECS

PRODUCT SIZE: 117.3mm x 41.1mm x 54.3mm	POWER INPUT: 5V
MATERIAL: Medical grade silicone/ ABS Case	BATTERY TYPE: Polymer lithium battery
PRODUCT WEIGHT: 87g	FREQUENCY: 5 levels and 8 patterns
WATERPROOF: IPX7	NOISE: Less than 50db
CHARGE TIME: 80-100 minutes	USE TIME: 100 minutes
LOW BATTERY WARNING	MAGNETIC CHARGING

DISPOSAL ADVICE

Dispose of according to your local regulations.

WARRANTY

We provide a 1 year customer warranty from when you first purchased your product. After 1 year from your initial purchase we have no obligation to send you replacement items even if previous ones were sent.

We recommend familiarizing yourself with our Terms and Conditions via vushstimulation.com/pages/warranty-refund-policy

GET IN TOUCH
vushstimulation.com
info@vushstimulation.com
**FOLLOW OUR MOVEMENT AND
EMBRACE #MORESELFOVE**
 @VUSH_OFFICIAL

Vush Pty Ltd
PO Box 2023 Prahran VIC 3181

All trademarks are property of Vush Pty Ltd
Designed in Australia, made with love in China

