

CATALOGUE OF HAND EMBROIDERED & ANTIQUE SHAWLS



INTEKHAB AHMAD, NAJIBABAD

The prices mentioned here are indicative, actual prices may vary. Some of the pieces shown in this catalogue may no longer be available but can be used as reference for custom orders. The antique pieces are one-of-a-kind and cannot be replicated or customised.

**The lead-time for a custom made hand-embroidered shawl  
is between 6-7 months.**

**Intekhab Ahmad**

Contact No. : +91 9811649326 | Instagram: @intekhab.ahmad.902

—

HAND EMBROIDERED SHAWLS



CATALOGUE



## HAND-EMBROIDERED SHAWLS AND BORDERS FROM THE WORKSHOP OF INTEKHAB AHMAD

This collection of hand-embroidered pashmina textiles comes from the workshop of master artisan Intekhab Ahmad. Each piece presented here has been created by a group of exceptionally skilled artisans, carrying forward a long and rich history of hand-embroidered shawls. The motifs used here are a lighter, modern interpretation of the traditional, dense floral and paisley design schemes of textiles from the late-Mughal and Avadhi period, dating back to the 18<sup>th</sup> and 19<sup>th</sup> century.

Available as full-length shawls and lighter stoles in pure and combination pashmina, this collection of textiles carries the spirit of refinement and connoisseurship associated with the glory days of the Mughal court and the Avadhi culture of Uttar Pradesh. Each piece has been made entirely by hand, taking up to several weeks to create.

### INTEKHAB AHMAD

Intekhab is a fourth-generation artisan from Najibabad in Uttar Pradesh, a historic centre for embroidery and the increasingly rare craft of 'rafoogari' or invisible mending, used to restore and repurpose priceless pashmina, jamavar and kani textiles. Working with a handful of highly skilled artisans, Intekhab's workshop produces intricately embroidered textiles along with expert restoration of antique textiles using traditional rafoogari techniques.

With their skills, Intekhab Ahmad and his team remain one of the few guardians of the tradition of needlework and rafoogari, carrying forward the valuable knowledge and skills of these precious crafts.



001

Hand painted and embroidered pashmina shawl

101.6 x 203.8 cm

INR 30,000

EUR 353



002

Hand embroidered pashmina shawl

101.6 x 203.8 cm

Lead time 6-7 months for reorder

INR 40,000

EUR 471

**SOLD**



003

Hand embroidered pashmina shawl

101.6 x 203.8 cm

INR 35,000

EUR 412



004

Hand embroidered pashmina shawl

101.6 x 203.8 cm

Lead time 6-7 months for reorder

INR 35,000

EUR 412

**SOLD**





005

Hand embroidered pashmina shawl

101.6 x 203.8 cm

Lead time 6-7 months for reorder

INR 40,000

EUR 471

**SOLD**



006

Hand embroidered pashmina shawl

101.6 x 203.8 cm

Lead time 6-7 months for reorder

INR 35,000

EUR 412

**SOLD**



007

Hand embroidered pashmina shawl

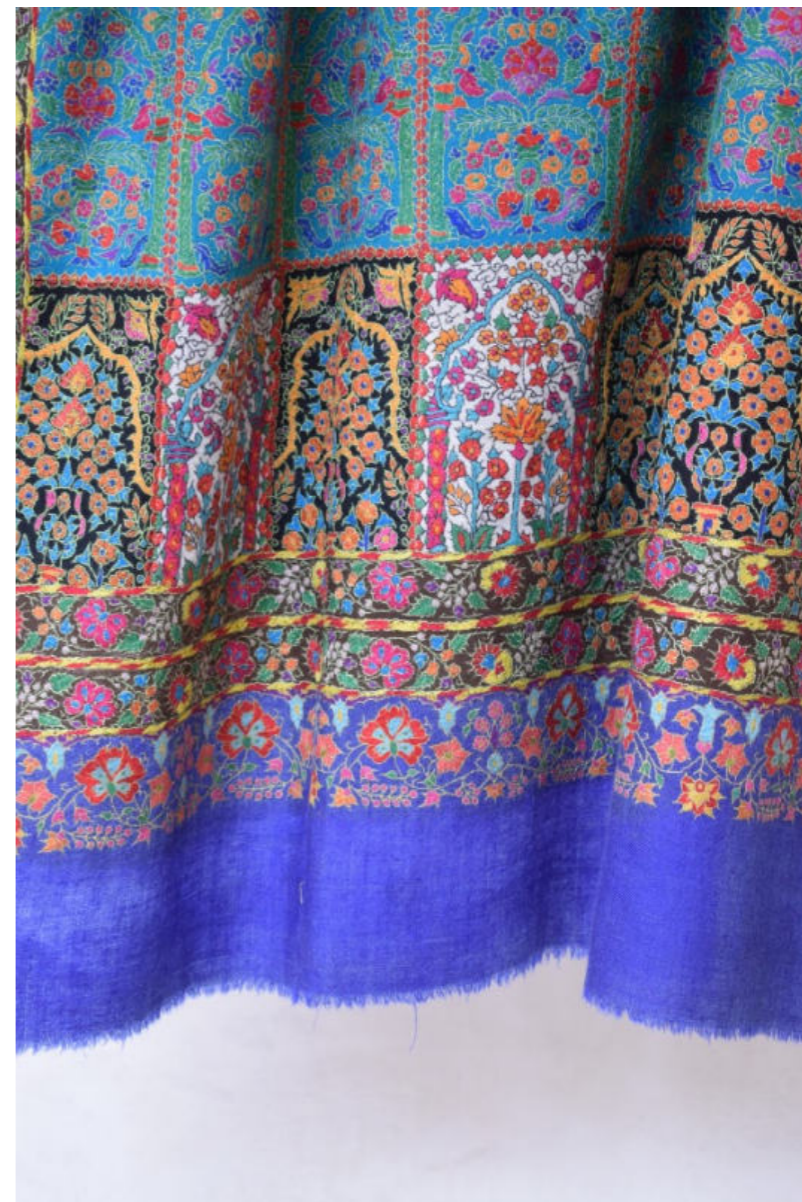
101.6 x 203.8 cm

Lead time 6-7 months for reorder

INR 40,000

EUR 471

**SOLD**



008

Hand embroidered pashmina shawl

101.6 x 203.8 cm

Lead time 6-7 months for reorder

INR 30,000

EUR 353

**SOLD**



009

Hand embroidered pashmina shawl

101.6 x 203.8 cm

Lead time 6-7 months for reorder

INR 35,000

EUR 412

**SOLD**



010

Hand painted and embroidered pashmina shawl

101.6 x 203.8 cm

Lead time 6-7 months for reorder

INR 40,000

EUR 471

**SOLD**



011

Hand embroidered pashmina shawl

101.6 x 203.8 cm

INR 40,000

EUR 471



012

Hand embroidered pashmina shawl

101.6 x 203.8 cm

Lead time 6-7 months for reorder

INR 35,000

EUR 412

**SOLD**





013

Hand embroidered pashmina shawl

101.6 x 203.8 cm

Lead time 6-7 months for reorder

INR 35,000

EUR 412

**SOLD**



014

Hand embroidered pashmina shawl

101.6 x 203.8 cm

INR 40,000

EUR 471



015

Hand embroidered pashmina shawl

101.6 x 203.8 cm

Lead time 6-7 months for reorder

INR 40,000

EUR 471

**SOLD**



016

Hand embroidered pashmina shawl

101.6 x 203.8 cm

INR 40,000

EUR 471



017

Hand embroidered pashmina shawl

101.6 x 203.8 cm

INR 40,000

EUR 471



018

Hand embroidered pashmina shawl

101.6 x 203.8 cm

Lead time 6-7 months for reorder

INR 40,000

EUR 471

**SOLD**



019

Hand embroidered pashmina shawl

101.6 x 203.8 cm

Lead time 6-7 months for reorder

INR 40,000

EUR 471

**SOLD**



020

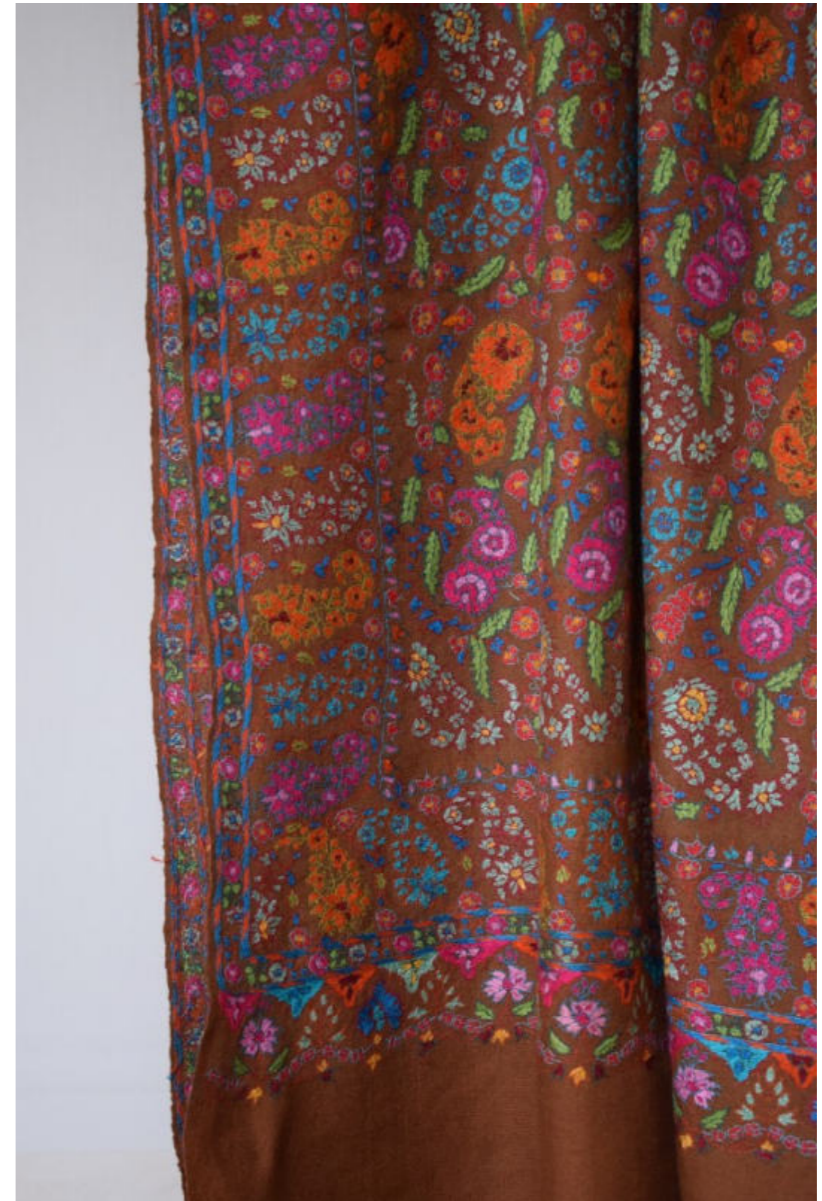
Hand embroidered pashmina shawl

101.6 x 203.8 cm

INR 35,000

EUR 412





021

Hand embroidered pashmina shawl

101.6 x 203.8 cm

INR 40,000

EUR 471



022

Hand embroidered pashmina shawl

101.6 x 203.8 cm

INR 40,000

EUR 471



023

Hand embroidered pashmina shawl

101.6 x 203.8 cm

INR 40,000

EUR 471



024

Hand embroidered pashmina shawl

101.6 x 203.8 cm

INR 40,000

EUR 471



025

Hand embroidered pashmina shawl

101.6 x 203.8 cm

INR 60,000

EUR 706



026

Hand embroidered pashmina shawl

101.6 x 203.8 cm

INR 40,000

EUR 471

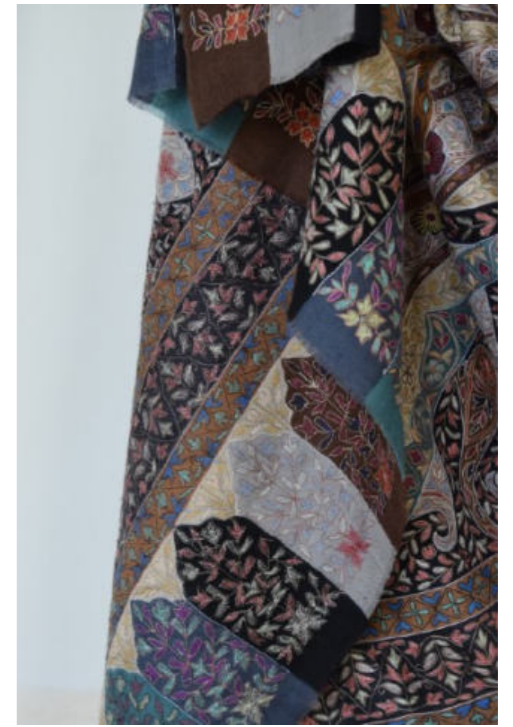
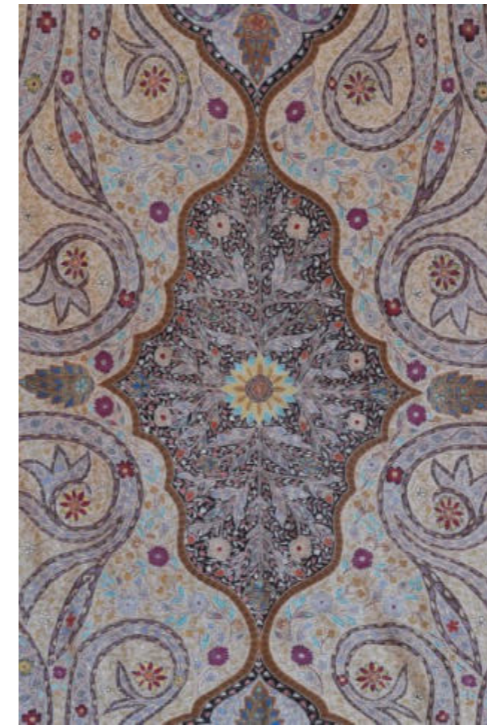


027

Hand painted and embroidered pashmina shawl  
(men's size - 135 x 270 cm)

INR 85,000

EUR 1000



028

Hand painted and embroidered pashmina shawl

(men's size - 135 x 270 cm)

Lead time 6-7 months for reorder

INR 85,000

EUR 1000

**SOLD**





029

Hand embroidered pashmina border

Lead time 6-7 months for reorder

INR 9000

EUR 106

**SOLD**



030

Hand embroidered pashmina border

INR 12,000

EUR 142



031

Hand embroidered pashmina border

Lead time 6-7 months for reorder

INR 12,000

EUR 142

**SOLD**



032

Hand embroidered pashmina border

INR 12,000

EUR 142



033

Hand embroidered border

INR 12,000

EUR 142



034

Hand embroidered pashmina border

INR 6000

EUR 71



035

Hand embroidered pashmina border

Lead time 6-7 months for reorder

INR 6000

EUR 71

**SOLD**



036

Hand embroidered pashmina border

Lead time 6-7 months for reorder

INR 6000

EUR 71

**SOLD**





037

Hand embroidered pashmina border

Lead time 6-7 months for reorder

INR 6000

EUR 71

**SOLD**

ANTIQUÉ SHAWLS



CATALOGUE



## RESTORED ANTIQUE PASHMINA, JAMAVAR & KANI SHAWLS FROM THE WORKSHOP OF INTEKHAB AHMAD

The textiles presented in this catalogue are genuine antiques dating back as far as the 18<sup>th</sup> century, including a fine example of a late-Mughal period kani shawl. The textiles have been meticulously restored using traditional 'rafoogari' or invisible mending techniques at the workshop of master artisan and craft revivalist Intekhab Ahmad.

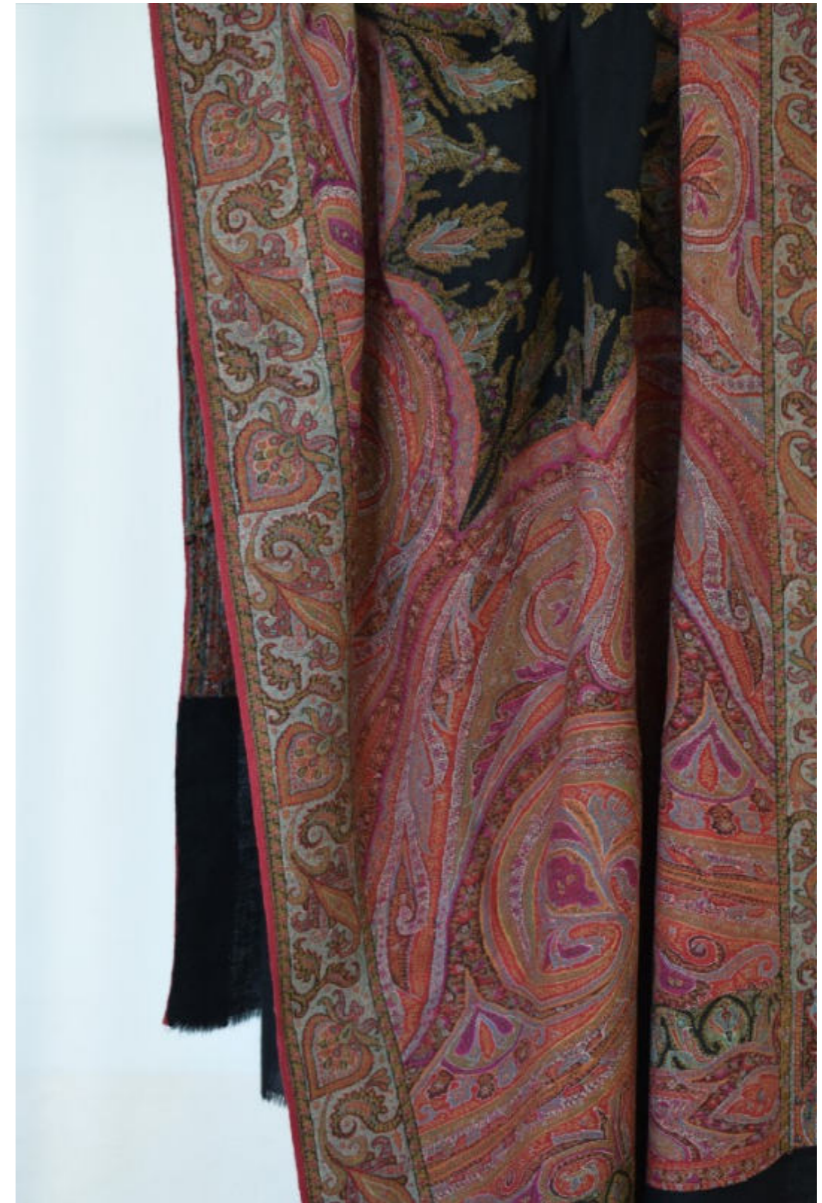
Rafoogari is like a precious secret tucked away in the threads of priceless textiles. The invisible mending technique was an integral part of the shawl industry in Kashmir. Restoring and repurposing priceless borders and textile fragments was an important part of the economy and philosophy of this system, with every element repurposed with ingenuity.

The town of Najibabad in Uttar Pradesh remains one of the last centres for this craft and workshops run by master artisans like Intekhab Ahmad carry on this fine tradition of restoring priceless heirloom pashmina, jamavar and kani textiles.

### INTEKHAB AHMAD

Intekhab is a fourth-generation artisan from Najibabad, Uttar Pradesh. Along with a handful of highly skilled artisans, Intekhab's workshop produces intricately embroidered textiles along with expert restoration of antique textiles using traditional rafoogari techniques.

With their skills Intekhab Ahmad and his team remain one of the few guardians of the tradition of needlework and rafoogari, carrying forward the valuable knowledge and skills of these precious crafts.



038

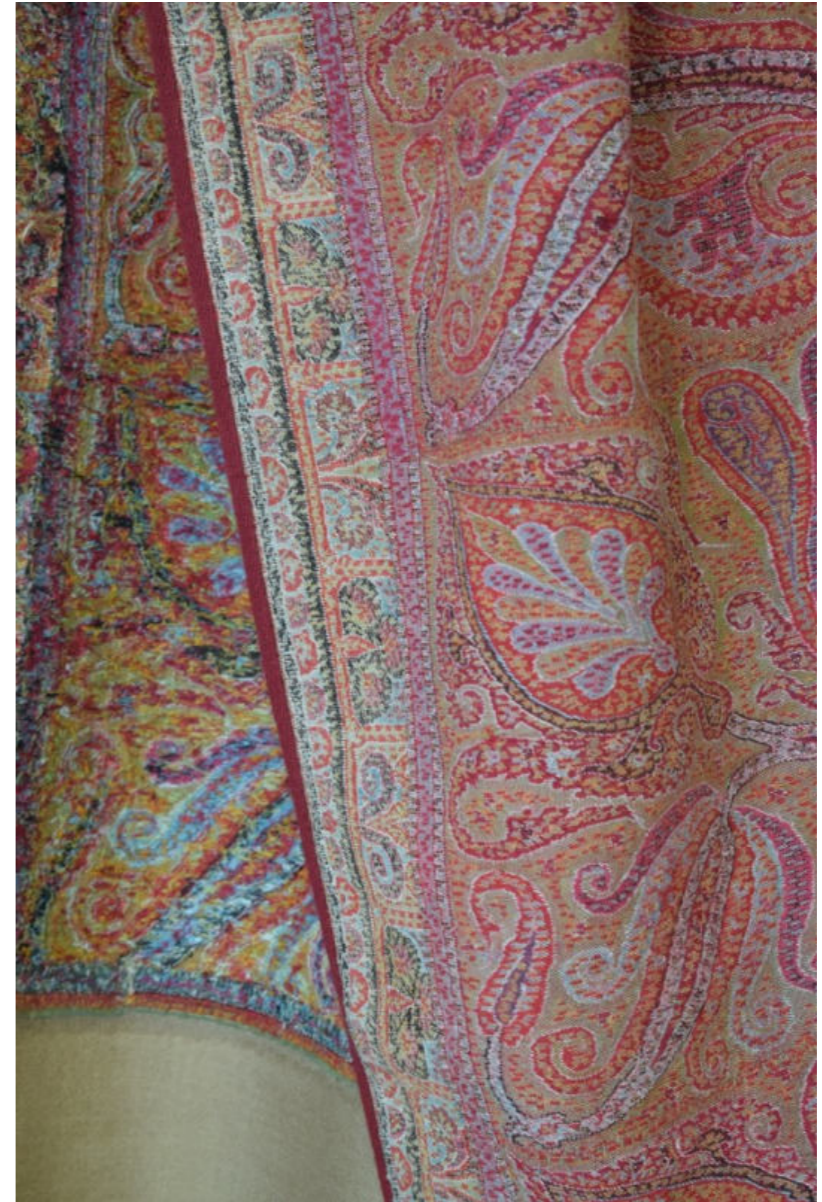
Kani shawl

91.4 x 152.4 cm

INR 55,000

EUR 647

**SOLD**



039

Kani Jamawar

Women's size - 91.4 x 152.4 cm

INR 60,000

EUR 706



040

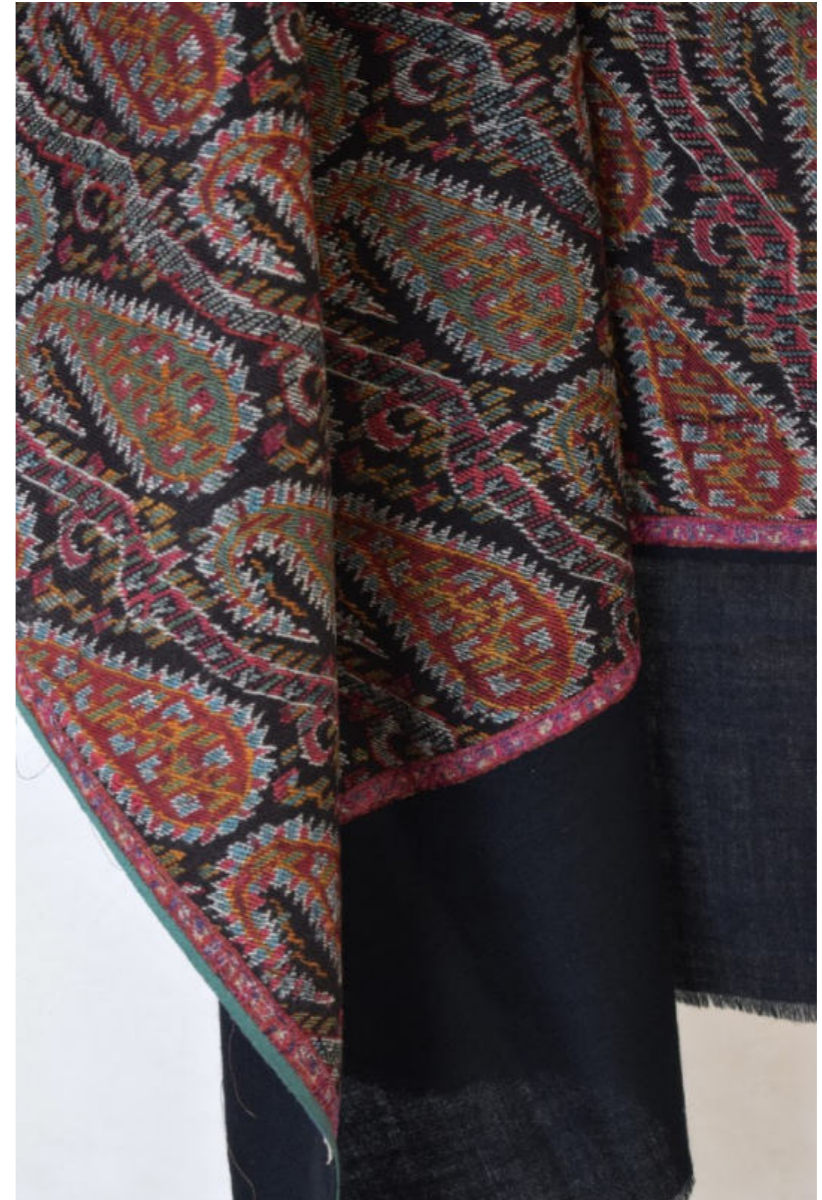
Kani shawl

91.4 x 152.4 cm

INR 50,000

EUR 588

**SOLD**



041

Kani Jamawar

Women's size - 91.4 x 152.4 cm

INR 55,000

EUR 647



042

French Paisley shawl

91.4 x 152.4 cm

INR 22,000

EUR 259





043

French Paisley shawl

91.4 x 152.4 cm

INR 22,000

EUR 259

**SOLD**



044

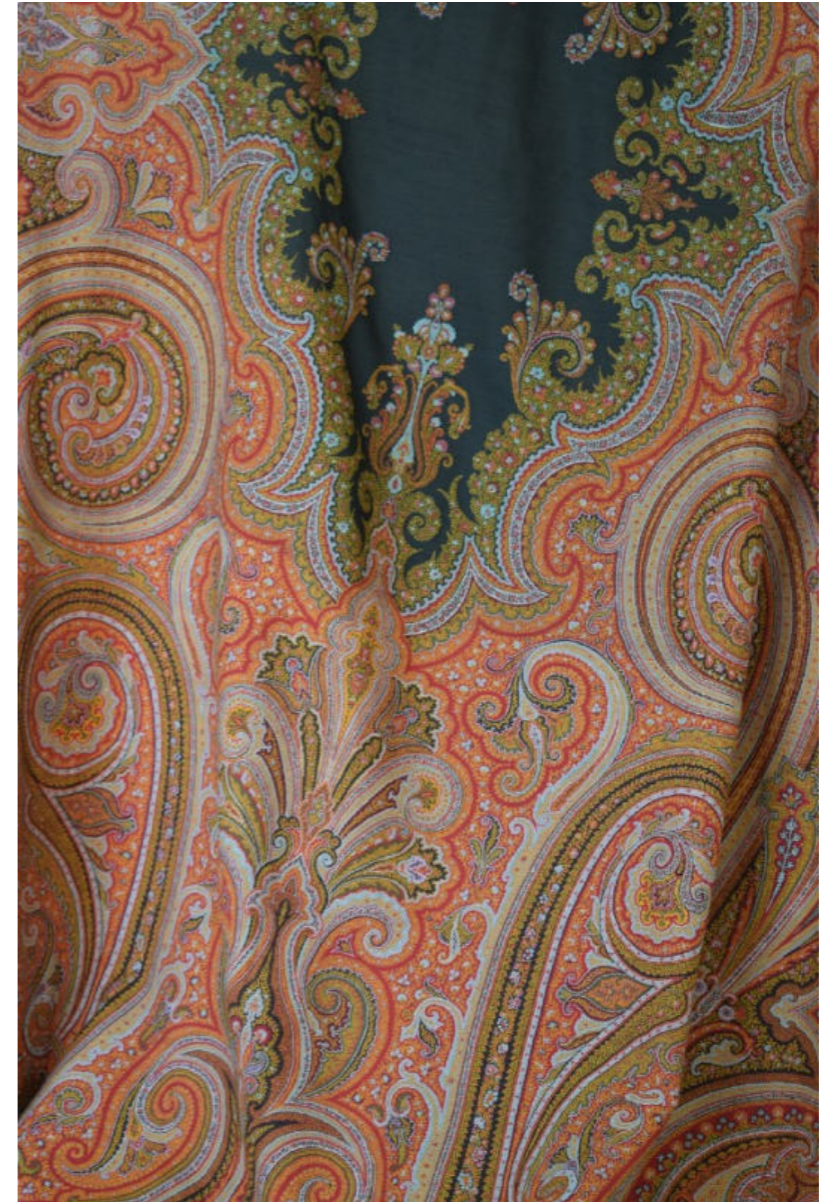
French Paisley shawl

91.4 x 152.4 cm

INR 25,000

EUR 294

**SOLD**



045

French Paisley shawl  
Men's size - 135 x 270 cm

INR 60,000

EUR 706



046

Kani Jamawar

Women's size - 91.4 x 152.4 cm

INR 2,50,000

EUR 2941



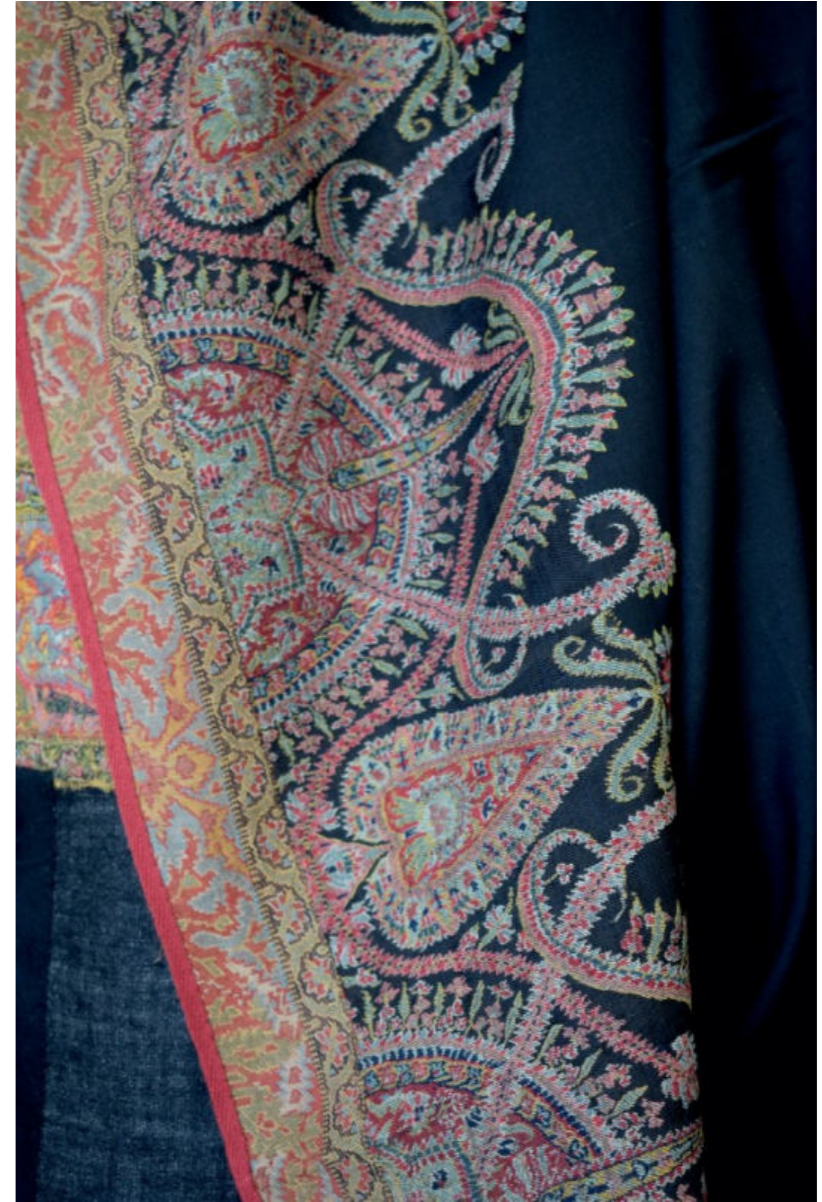
047

Kani Jamawar

Women's size - 91.4 x 152.4 cm

INR 2,60,000

EUR 3059



048

Kani Jamawar

Women's size - 91.4 x 152.4 cm

INR 65,000

EUR 765

**SOLD**



049

Kani Jamawar patchwork  
Women's size - 91.4 x 152.4 cm

INR 50,000

EUR 588



050

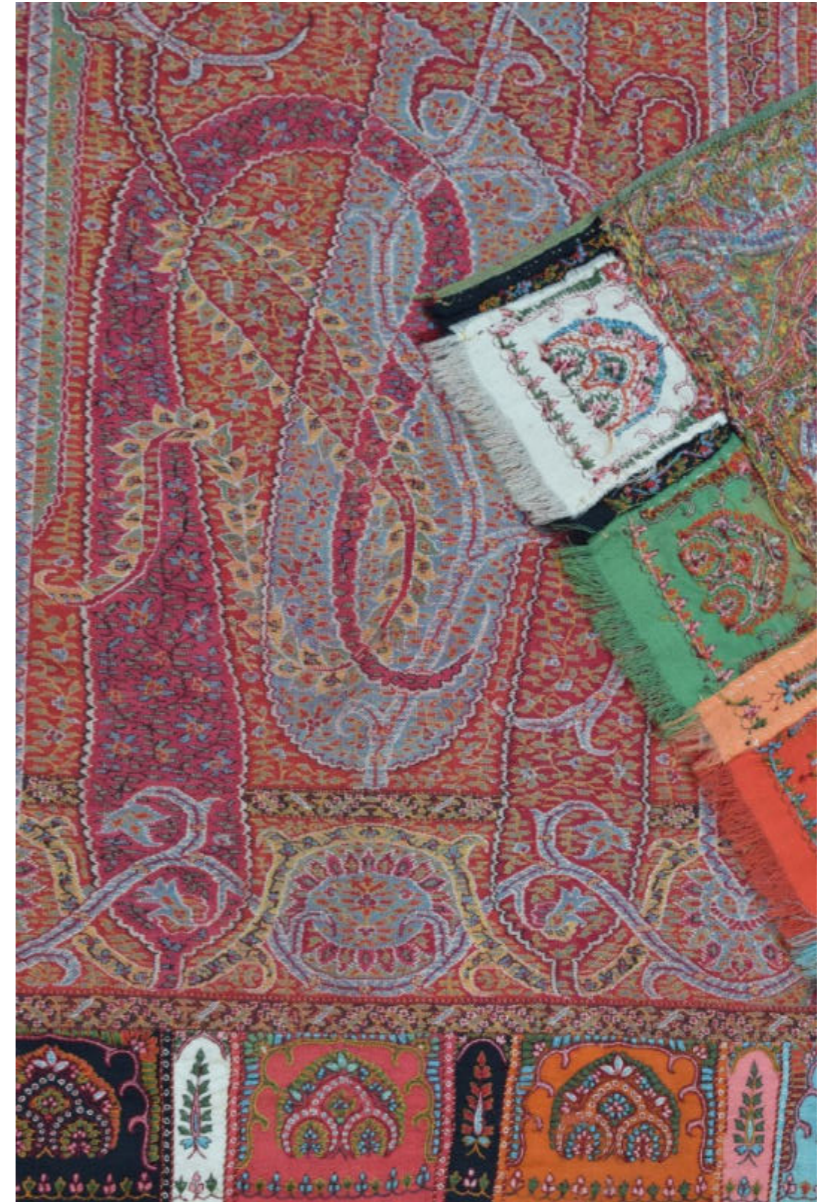
Kani Jamawar

Women's size - 91.4 x 152.4 cm

INR 1,25,000

EUR 1471





051

Kani Jamawar

Men's size - 127 x 295 cm

INR 2,60,000

EUR 3059



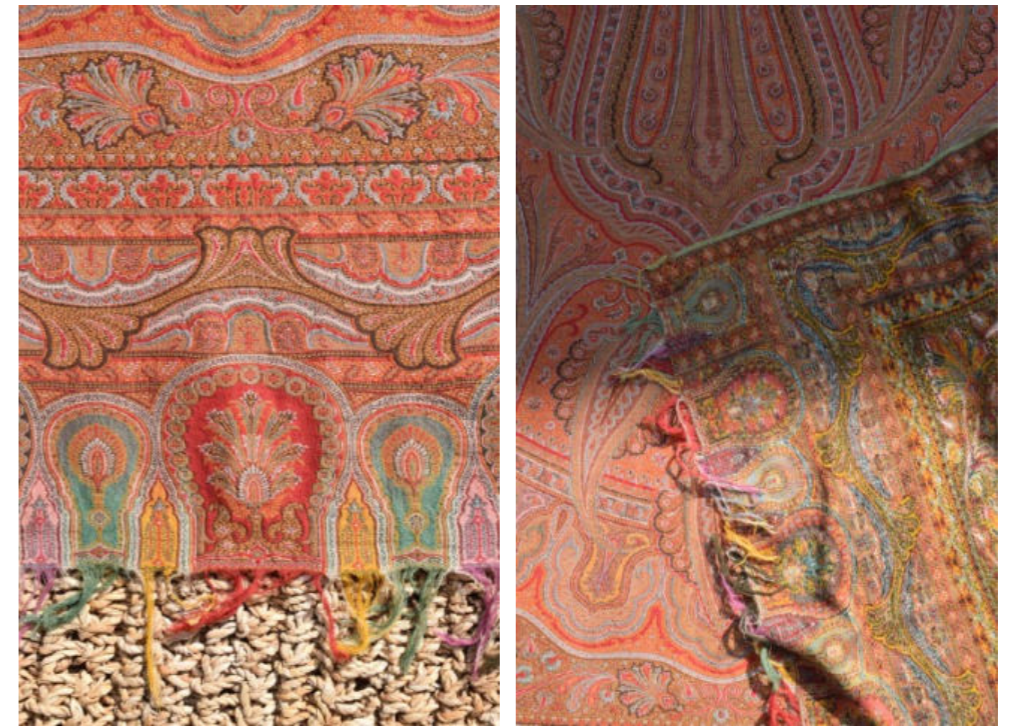
052

Kani Jamawar

Women's size - 106 x 208 cm

INR 2,90,000

EUR 3412



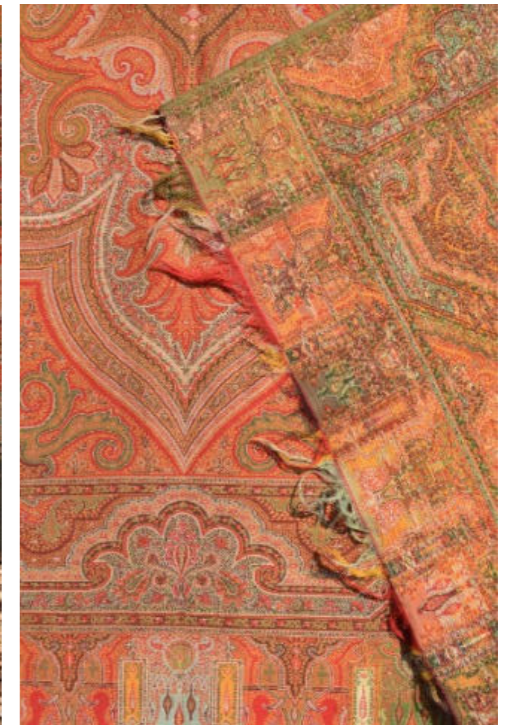
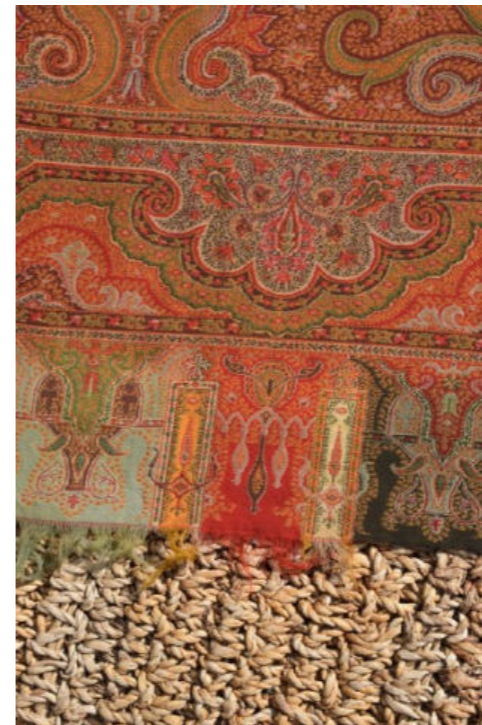
053

Kani Jamawar

Men's size - 138 x 305 cm

INR 60,000

EUR 706



054

Kani Jamawar

Men's size - 127 x 295 cm

INR 60,000

EUR 706

**SOLD**