



SOLA™

OWNER'S MANUAL

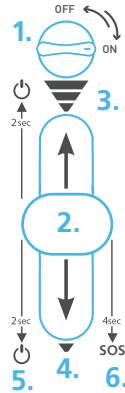


Light & Motion
711 Neeson Road,
Marina, CA 93933 USA
lightandmotion.com

OPERATION

1. Power ON/ OFF Knob
2. Toggle Slide Switch
3. Switch Forward Increase output
4. Switch Back Decrease output
5. Off: Hold either direction 2 seconds.
6. SOS Mode:

With light off, hold switch in "back (4)" position for 4 seconds to engage SOS mode. To exit SOS mode, hold switch in either direction for 2 seconds to turn off, or press the switch forward and release it to turn light on in normal mode.

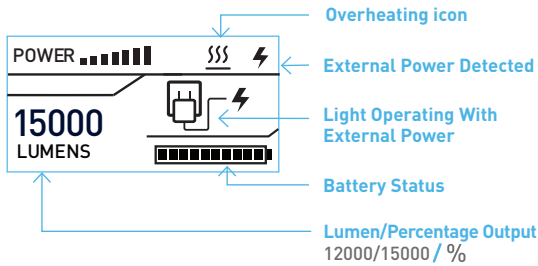


OLED DISPLAY

Overheating Icon
Wait to charge until symbol disappears

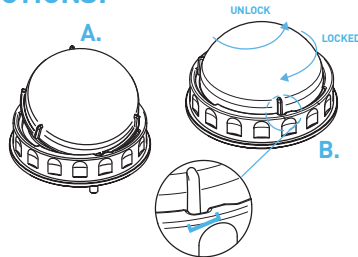
Thermal Sensor is not Detect
Return unit to Light and Motion for servicing.

LED is not detected



DOME PORT ASSEMBLY DIRECTIONS:

1. Visually locate the locking detent on LED Head Module. (Detail A)
2. Angle the Dome Port to slide the Dome Port Arm underneath the locking detent. (Detail A)
3. Turn the Dome Port clock-wise into the locked location before using your light. (Detail B)



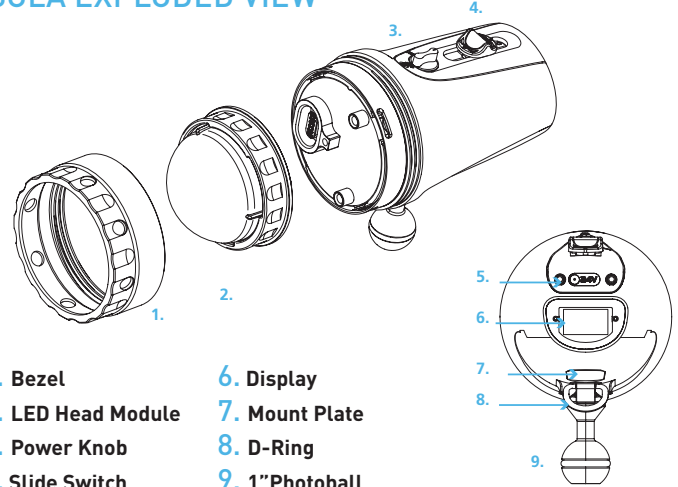
CONNECTING THE LED HEAD MODULE

Disconnecting the LED Head Module from the Body Module:
Unscrew the bezel from the body module and remove the LED head module. Install connector cap on the LED head module to protect the o-ring from debris. Install connector cap to body connector to prevent damage to electrical contacts. Thread bezel back onto the body assembly. The LED head module and Body assemblies can be packed separately for travel. To re-install the LED head module, do the above procedure in reverse order.

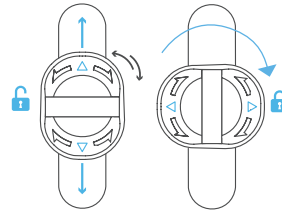
The Dome Port sealing edge must be kept clean and protected from any damage. Make sure O-ring is lubricated – re-grease with standard silicone lubricant if necessary.

- * Contact Light and Motion for additional O-ring replacement or information.
- * If Dome Port is removed, do not compromise the sealing surface. Do not place Dome Port on rough surface.

SOLA EXPLODED VIEW

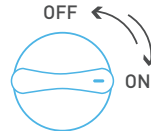


1. Bezel
2. LED Head Module
3. Power Knob
4. Slide Switch
5. Charge Pins
6. Display
7. Mount Plate
8. D-Ring
9. 1" Photoball



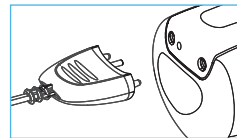
SLIDE SWITCH

The Slide Switch activates the light, and controls brightness. It can also be locked into place to by centering the slider and rotating the switch 90 degrees in either direction.



POWER KNOB

The Power Knob electrically disconnects the Li-Ion battery. To connect the battery, turn the knob ON. The light will be ready for use but the LED will remain off.



CHARGING THE SOLA

- Align guide pin to connect charger.
- Make sure to fully charge it before use.

To charge: Turn the Power Knob to "ON". Connect the charger to the charge pins on the back and plug the AC adaptor into an outlet. The display will come on to confirm the light is charging.

CARE AND MAINTENANCE

- Rinse your Sola thoroughly in fresh water after every dive. This will prevent corrosion and salt buildup.
- If the LED head module or front port has been removed, inspect the o-ring and sealing surfaces for dirt and defects and if necessary add a light film of O-ring grease before re-assembling.
- Store the SOLA in a cool, dry place with its batteries at least 1/2 charged and the slide switch in the locked position and the power knob OFF. Charge batteries every 60 days when not in use.
- Do not store the Sola with its batteries discharged as this can cause permanent damage to the batteries.
- Avoid display image 'burn-in' by disconnecting the charger and turning the unit off after charging is complete; leaving the unit plugged into charging power for extended periods of time may result in cosmetic visible display change.

TIPS AND TRICKS

- Conserve your battery by not burning your SOLA at full brightness. For example half the brightness yields twice the runtime.
- Light & Motion has provided a D-ring for attaching a lanyard to the bottom of the SOLA; it is recommended to tether the SOLA using the D-ring to your housing as a security precaution.
- When using the 3/4" Locline arms, it is effective to grasp the light at the 3/4" Locline base of the light to move it. This minimizes any risk of accidentally popping the light off of the arm.

STANDARD WARRANTY

Light & Motion provides a limited warranty to the original purchaser of its products against all defects in original workmanship and material, under normal use and service, for two years from the date of purchase with the following exceptions:

- Warranties void if core body is opened
- Batteries are warranted for 90 days
- Cosmetic discoloration of surfaces and display
- Damage due to reverse polarity power
- Light & Motion will not be liable for any further loss, damages, or expenses, including incidental or consequential damages directly or indirectly arising from the sale or use of this product. Products not manufactured by Light & Motion are not covered under the Light & Motion warranty. These products are covered by the Terms and Conditions set forth by their respective manufacturers.

IMPORTANT INFORMATION:

- Always store your light fully charged
- Always lock the slide switch and turn off the power knob when traveling or in storage
- Never leave your equipment in the rinse bucket. It may be damaged by other equipment
- Rinse equipment in fresh water after every dive.

CAUTION CAUTION CAUTION!




Please read this manual carefully: the SOLA is a professional underwater video light which can produce high levels of light and heat, and must be used with care.

- Do not turn your SOLA on outside of the water for more than a few seconds at a time. It is designed to be cooled by surrounding water, and may overheat if it is not adequately cooled.
- Never look directly at the SOLA LEDs when turned on.
- The Sola has a power knob that completely disconnects the battery from the circuit for travel. In addition the LED head module can be removed if required by airport security.



The Sola line of LED lights are engineered with a variety of safety features to prevent the light from accidentally turning on.

The slide switch can be locked by rotating it. 

The light is engineered with a temperature sensor to prevent overheating as well as a fail safe to disable the light if the temperature sensor malfunctions.

WARNING: Potentially hazardous optical radiation emitted from this product. Do not look at LEDs in operation. Eye injury may result. ANSI RG-1.

A Product Safety Data sheet is available on Light and Motion's website at the web address below. You can print this sheet to show to travel safety officers at airline checkpoints.

Visit <http://lm.tl/lmhelp> if you need to open the light.