

1

## Important Safeguards & Warning

### Attention:

Please read the following safeguards and warnings carefully before using the product in order to avoid damages and losses

### Note:

Do not expose the device to soot, high humidity or dust. Doing so may cause fire or electric shock.  
Do not install the device in direct sunlight as it may cause overheating and failure.  
Installation of the units should be via the compatible rack mount or securely on a flat surface.  
Do not place the device on carpet to or around the unit, Doing so may cause overheating, failure or fire.  
Do not place stack or place objects on the unit  
This unit contains no user serviceable parts, Servicing should only be performed by approved technicians.

### Warning:

Do not use a power supply other than the provided manufacture power supply. Failure to do so may cause unit failure and or damage.

### Special Announcements:

This manual is reference only.  
All the designs and software here are subject to change without prior written notice

2

## Product Overview

### Features:

#### Introduction:

This is the latest industrial Ethernet(PoE) Switch that can operate under WIDE-TEMPERATURE environment ranging from -40 up to 80 degrees C and is equipped with fiber slots which can be extended from 2 kilometers (via multi-mode fiber) up to above 100 kilometers (via single-mode fiber), respectively. In other words, the industrial switch provides more flexibility for Transportation, Manufacturing, Security and Surveillance with distance extension without any limitation and is a suitable model either for long or short distance network deployment.

This Industrial unmanaged Ethernet switch is based on the IEC61643-21:2000 standard, integrated with surge protection for both network signal and power together. It is adapted to the lightning surge protection for surveillance IP camera by reacting overvoltage, operating over-voltage and static electricity discharge etc.

This Industrial switch is designed with a compact case that allows either DIN rail or panel mounting for the efficient usage of cabinet space. It provides an integrated power supply with a wide range of voltages for worldwide operation.

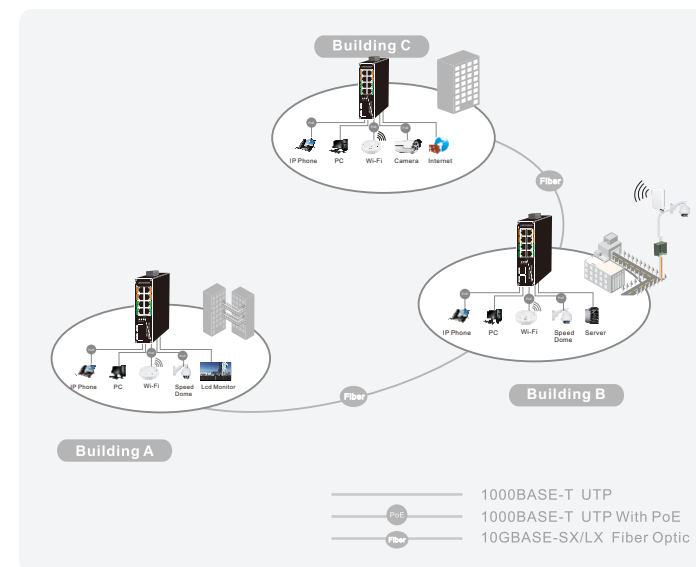
#### Common features:

- ※ High performance Store and Forward architecture
- ※ DIN rail and wall mount design
- ※ Confirm to IEEE802.3i、IEEE802.3u、IEEE802.ab、IEEE802.z and IEEE802.3X standards
- ※ support IEEE802.3af and IEEE802.3at standards
- ※ Contact Discharge 8KV DC; Air Discharge 15KV DC
- ※ -40 to 85 degrees C wide operating temperature
- ※ IP40 industrial metal case protection

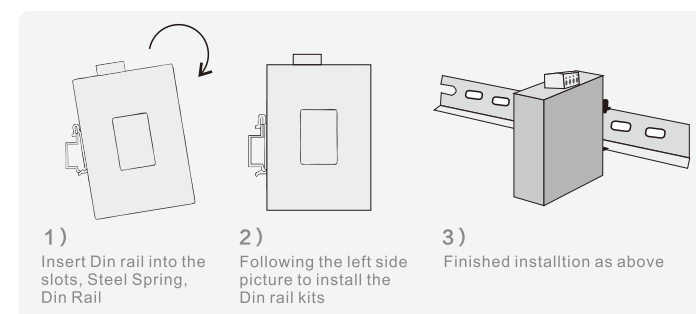
3

### Typical Application:

The typical application of the device is show as below



### Switch installation :



4

## Appendix Technical specification

Model	8-10/100/1000M+2 Gigabit SFP Unmanaged Industrial 80.23bt PoE Switch
Hardware Specifications	
Connector	8-10/100/1000Base-T RJ45 2-1.25G Base-X SFP
PoE Port	4-10/100/1000Mbps PoE+ port, 4-10/100/1000Mbps PoE++ port
LED indicators	Power Indicator: PWR(green). Network Indicator: Link(green) SFP Indicator: Link(green)
Switch Architecture	Store and Forward
Backplane bandwidth	32Gbps
Packet forwarding rate	16.82Mpps
MAC address	8k
Power requirement	DC 48-56V
ESD Protection	6KV ESD
Dimension(W×D×H)	48mm x 110mm x 150mm(1.89in*4.33in*5.91in)
Weight	1.25Kg
Power over Ethernet (PoE) Specifications	
Network standard	IEEE802.3i 10 BASE-T ; IEEE802.3u 100 BASE-TX IEEE802.3ab/z 1000 BASE-TX ; IEEE802.3x Flow Control
PoE Standard	IEEE 802.3af, IEEE 802.3at, IEEE802.3bt
PoE Supply Type	1/2/4/5(+), 3/6/7/8(-) (Port1-Port4) 1/2(+), 3/6(-) End-span
PoE Power Output	Max. 15.4 watts (IEEE 802.3af), Max. 30 watts (IEEE 802.3at) 60 watts (IEEE 802.3bt)
PoE Power budget	Max. 360W
Environment	
Environment specification	Operating temperature: -40℃~85℃, operating humidity: 5%~95% Storage temperature: -40℃~85℃, storage humidity: 5%~95%
Safety	FCC Part15 Class A, CE, RoHs

5

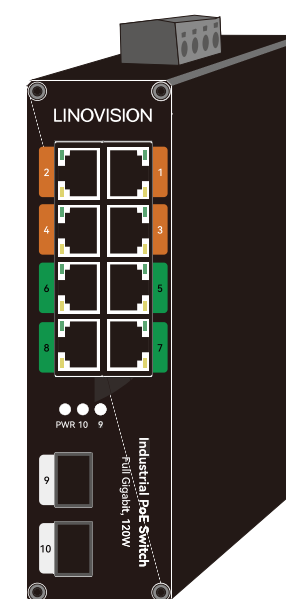
## Warranty Card

WARRANTY CARD		
INFORMATION (FILLED BY THE CUSTOMER)		
PRODUCT NAME	SERIES NUMBER	
PRODUCT MODE	LINKMAN	
CUSTOMER	ZIP CODE	
ADDRESS	FAX	
TEL	SHIPPING DATE	
E-MAIL		
<b>Quality Certificate</b> Checked By: _____ Date: _____		
This warranty card is only valid as it is filled in and got the product repaired		

# LINOVISION

## 8 Ports Industrial 802.3bt PoE Switch

User's Manual V3



**POE-SW508G**