

IPC608EX

Explosion-proof

Camera

User Manual

LINOVISION

Contents

1	Connection Guide	3
2	Activating the Camera	3
3	Access to the Camera	7
3.1	Accessing by Web Browsers	7
4	LED Light Control	8
5	Access Camera from Guarding vision APP	10
5.1	Enable the Guarding vision Platform	10
5.2	Setup Guide for Guarding vision	12

1. Connection Guide

It is an overall connection application diagram, among Explosion-proof camera, PoE Switch, PC, NVR, Smartphone, etc. Please see below.

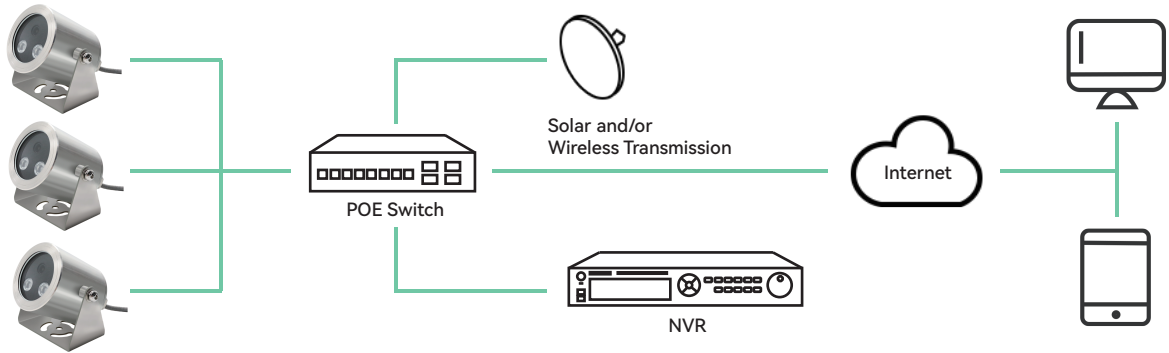


Figure 1-1 Connection diagram

2. Activating the Camera

❖ Activation via Web Browser

Steps:

1. Power on the Explosion-proof camera, and connect the camera to the network.
2. Input the IP address into the address bar of the web browser, and click Enter to enter the activation interface.

Notes:

- The default IP address of the camera is 192.168.1.64.
- For the camera enables the DHCP by default, the IP address is allocated automatically. And you need to activate the camera via SADP software. Please refer to the following chapter for Activation via SADP.

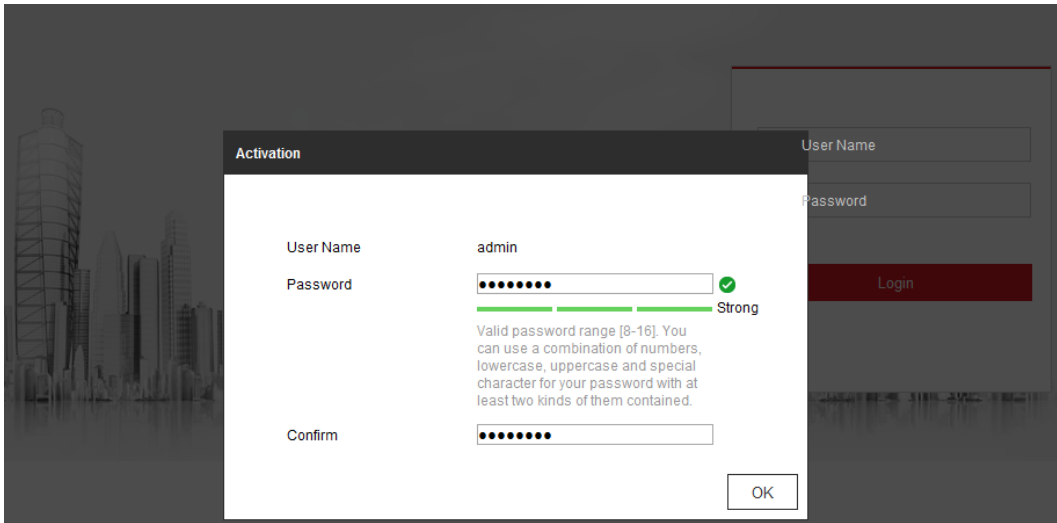


Figure 2-1 Activation via Web Browser

3. Create a password and input the password into the password field.
4. Confirm the password.
5. Click OK to save the password and enter the live view interface.

❖ **Activation via SADP Software**

SADP software is used for detecting the online device, activating the camera, and resetting the password.

Get the SADP software from the supplied disk or the official website, and install the SADP according to the prompts. Follow the steps to activate the camera.

SADP Tool for Windows

<https://app.box.com/s/689118421knsokmmontcc2v28owmz4om>

SADP Tool for MAC

<https://app.box.com/s/brssh8rpfbo5gjuzetopbtjwtr5fy7kc>

Steps:

1. Run the SADP software to search the online devices.
2. Check the device status from the device list, and select the inactive device.

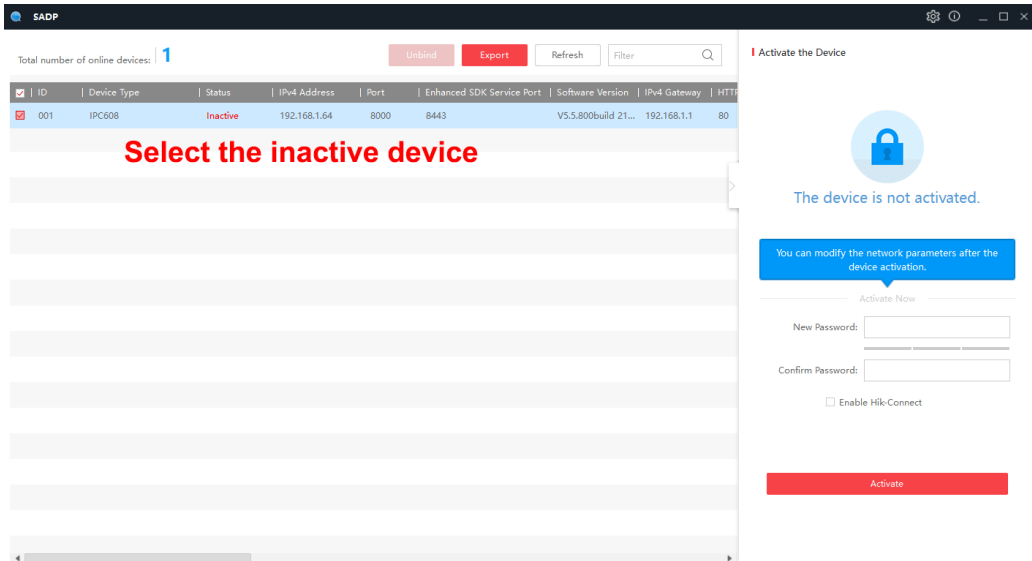


Figure 2-2 SADP Interface

3. Create a password and input the password in the password field, and confirm the password.
4. Click **OK** to save the password.

You can check whether the activation is completed on the popup window. If activation failed, please make sure that the password meets the requirement and try again.

5. Change the device IP address to the same subnet with your computer by either modifying the IP address manually or checking the checkbox of Enable DHCP.

The image shows a 'Modify Network Parameters' dialog box with the following fields and values:

Field	Value
IP Address:	192.168.1.64
Port:	8000
Subnet Mask:	255.255.255.0
IPv4 Gateway:	192.168.1.1
IPv6 Address:	::
IPv6 Gateway:	::
IPv6 Prefix Length:	0
HTTP Port:	80
Device Serial No.:	XX-XXXXXXXX-XXXXXXXX
Enable DHCP	<input type="checkbox"/>
Password	
Save	Save

Figure 2-3 Modify the IP Address

6. Input the password and click the **Save** button to activate your IP address modification.

3.1 Accessing by Web Browsers

Steps:

1. Open the web browser.
2. In the browser address bar, input the IP address of the camera, and press the **Enter** key to enter the login interface.
3. Activate the Explosion camera for the first time using, refer to the Section 2 for details.

Note:

- The default IP address is 192.168.1.64.
 - If the camera is not activated, please activate the camera first.
4. Select English as the interface language on the top-right of login interface.
 5. Input the user name and password and click **Login**.

The admin user should configure the device accounts and user/operator permissions properly. Delete the unnecessary accounts and user/operator permissions.

Note:

The IP address gets locked if the admin user performs 7 failed password attempts

(5 attempts for the user/operator).



Figure 3-1 Login Interface

6. Install the plug-in before viewing the live video and operating the camera. Please follow the installation prompts to install the plug-in.

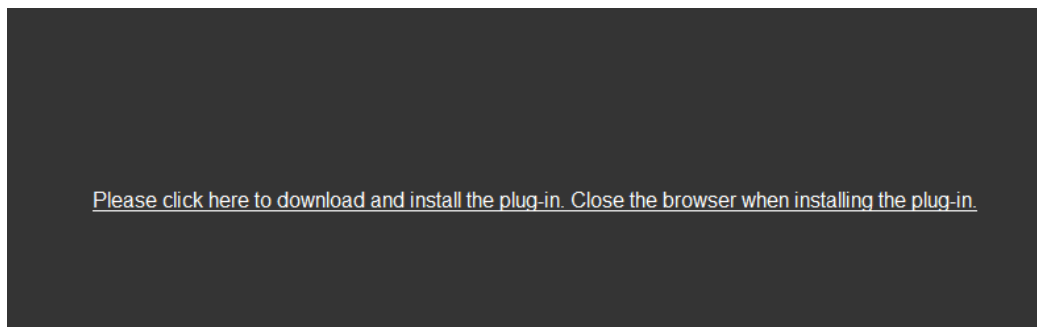


Figure 3-2 Download and Install Plug-in

Note: You may have to close the web browser to install the plug-in. Please reopen the web browser and log in again after installing the plug-in.

4. LED Light Control

1. Open the Infrared LED light

When the environment is dark, click the “Image” and switch to “Night” mode in Day/Night Mode, the LED light will be turned on.

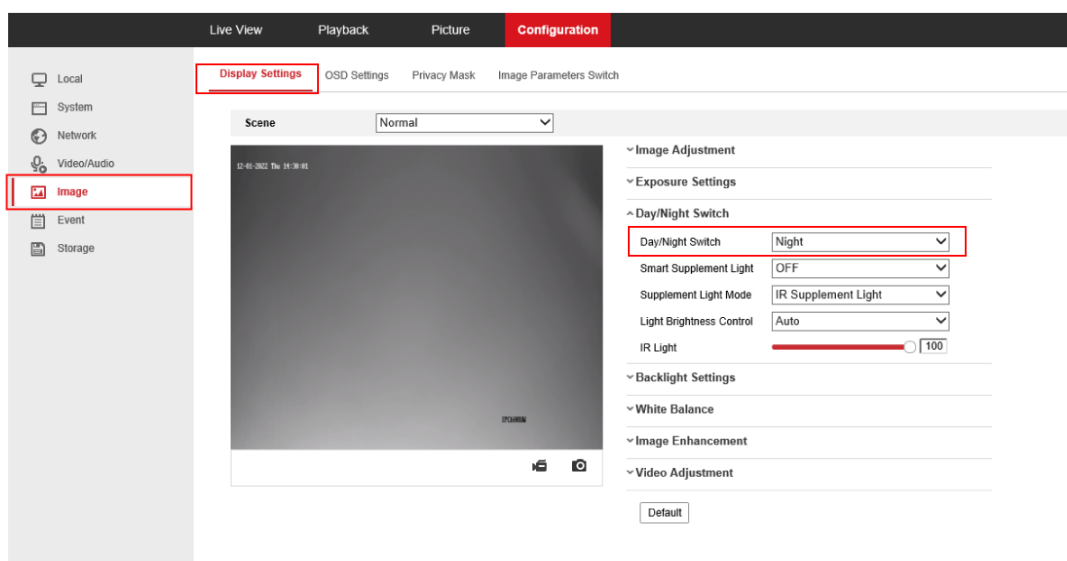


Figure 4-1 Turn on the LED

2. Close the Infrared LED light

When the environment is bright, click the “Image” and switch to “Day” mode, the LED light will be turned off.

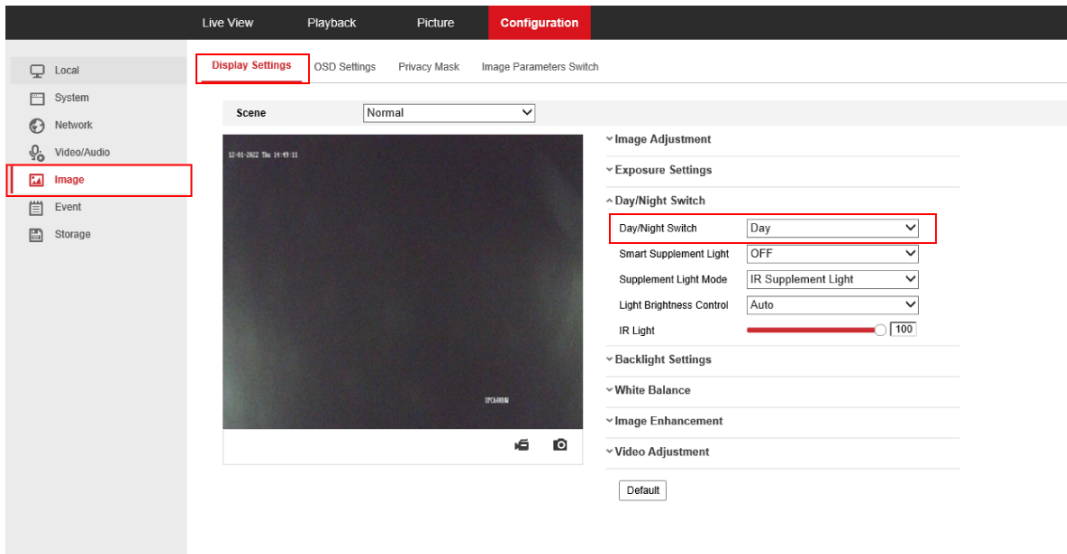


Figure 4-2 Turn off the LED

5.1 Enable the Guarding vision Platform

Steps:

1. Open Internet Explorer and Enter the camera IP (192.168.1.64)
Enter Username as admin and password,Allow/Install the ActiveX plugin.

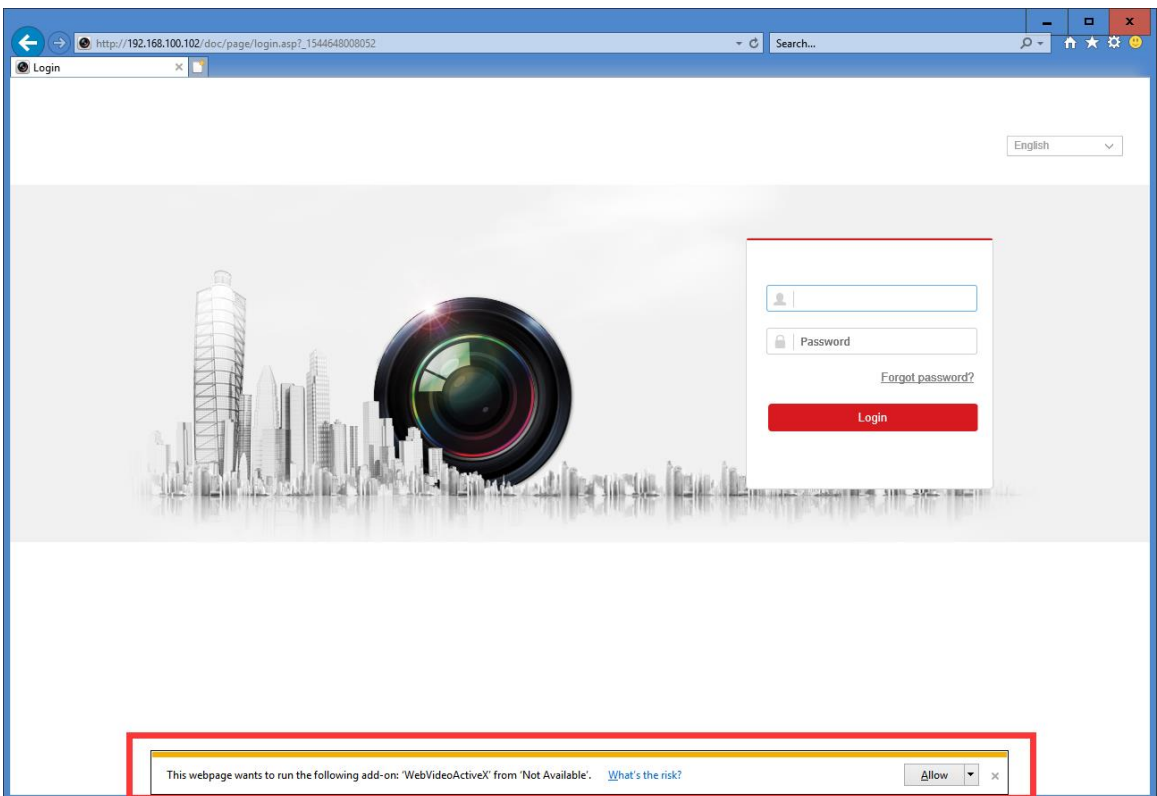


Figure 5-1 Login Interface

2. Click on Configuration, then Network, Advanced settings, Platform Access enable box

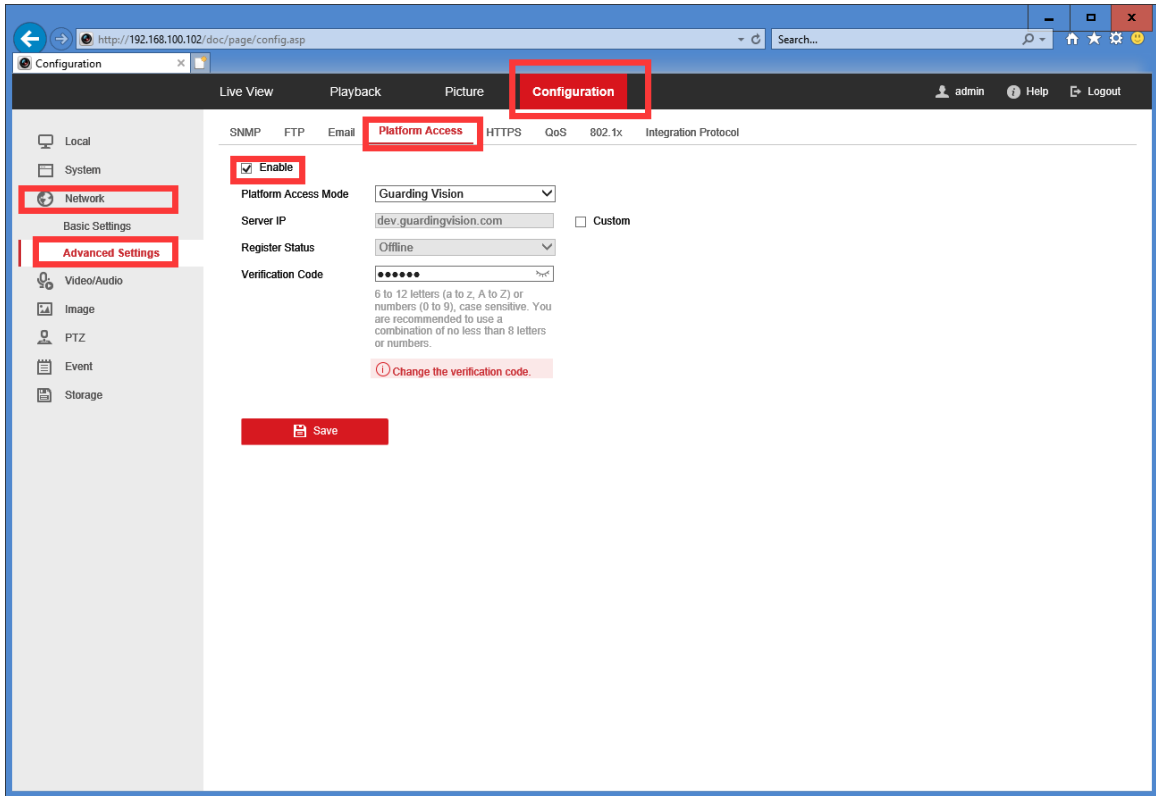


Figure 5-2 Platform setting

3. Create your verification code, then click on OK.

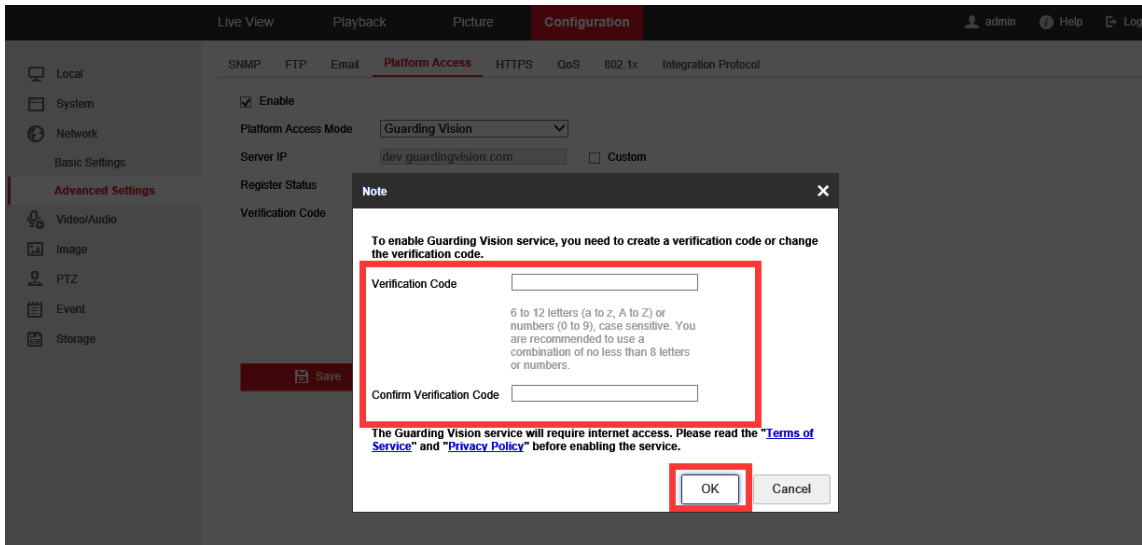
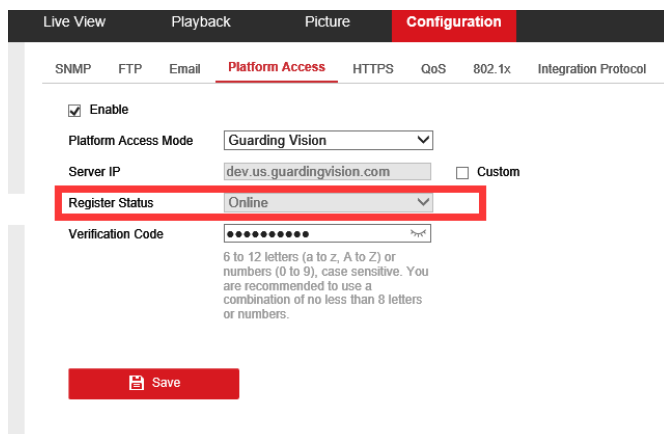


Figure 5-3 Verification code

4. Click on Save

Refresh page, you should see your platform access register status as online.



The screenshot shows a web interface with a top navigation bar containing 'Live View', 'Playback', 'Picture', and 'Configuration'. Below this is a sub-navigation bar with 'SNMP', 'FTP', 'Email', 'Platform Access', 'HTTPS', 'QoS', '802.1x', and 'Integration Protocol'. The 'Platform Access' section is active and contains the following fields:

- Enable
- Platform Access Mode:
- Server IP: Custom
- Register Status: (highlighted with a red box)
- Verification Code:

Below the Verification Code field, there is a note: "6 to 12 letters (a to z, A to Z) or numbers (0 to 9), case sensitive. You are recommended to use a combination of no less than 8 letters or numbers."

A red 'Save' button is located at the bottom of the configuration area.

Figure 5-4 Register Status

5.2 Setup Guide for Guarding vision

Steps:

1. Download Guarding Vision APP for IOS or Android from link below
IOS:

<https://itunes.apple.com/us/app/guarding-vision/id1101697283?mt=8>

Android:

https://play.google.com/store/apps/details?id=com.mcu.guardingvision&hl=en_US

2. Register account for the APP

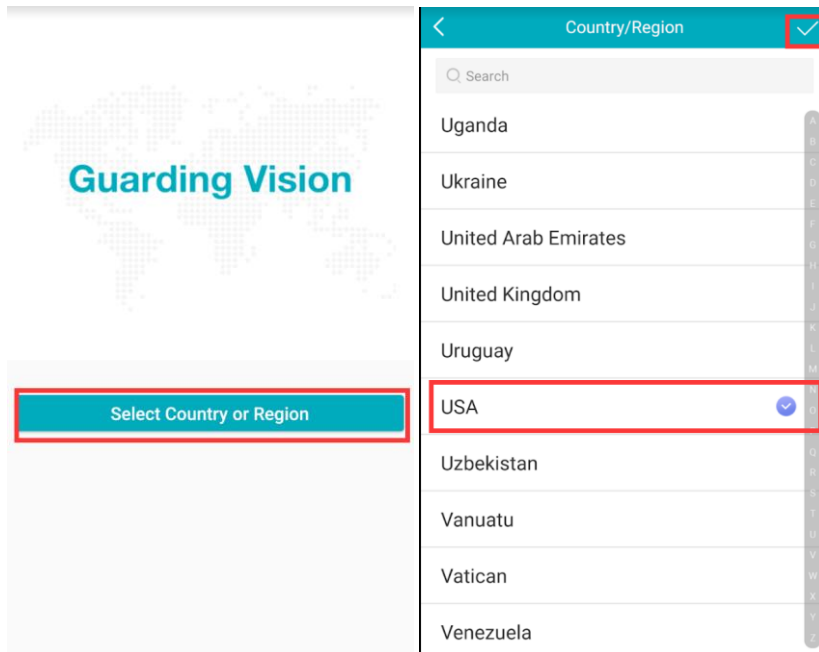


Figure 5-5 APP GUI

3. Once registered and logged into your account, click on Add Device.

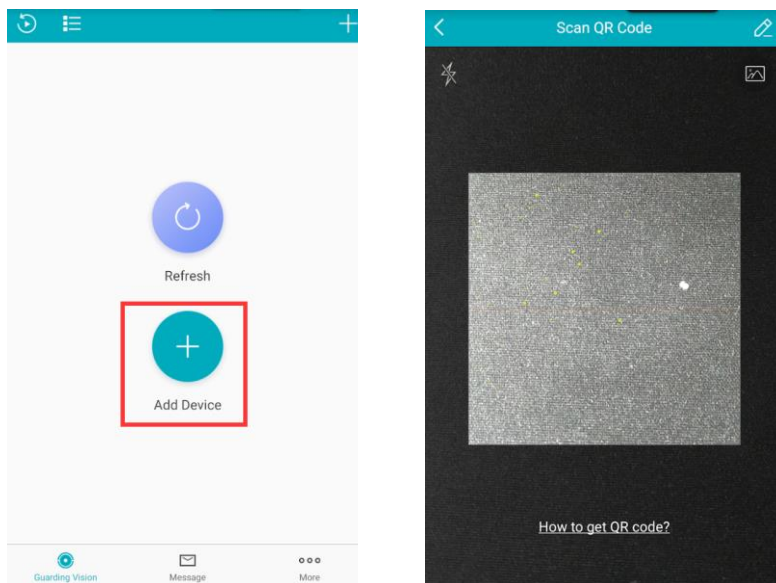


Figure 5-6 Add Device

4. Scan the QR code on the camera.



Figure 5-7 Camera QR code

5. Once camera found, click on add

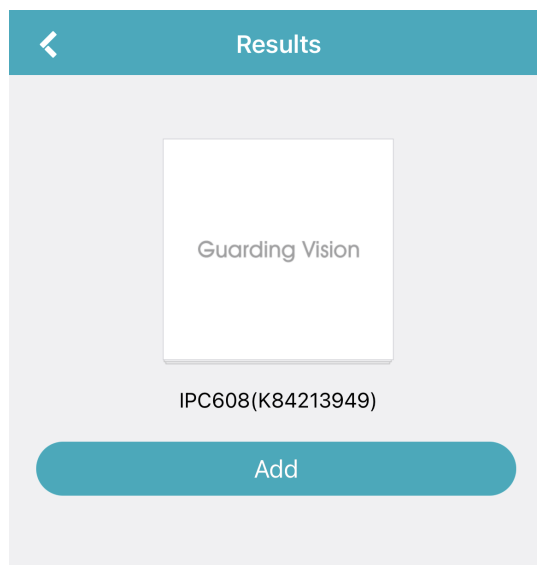


Figure 5-8 Scan results

6. Enter the verification code from step 5-1-3 and click on OK.

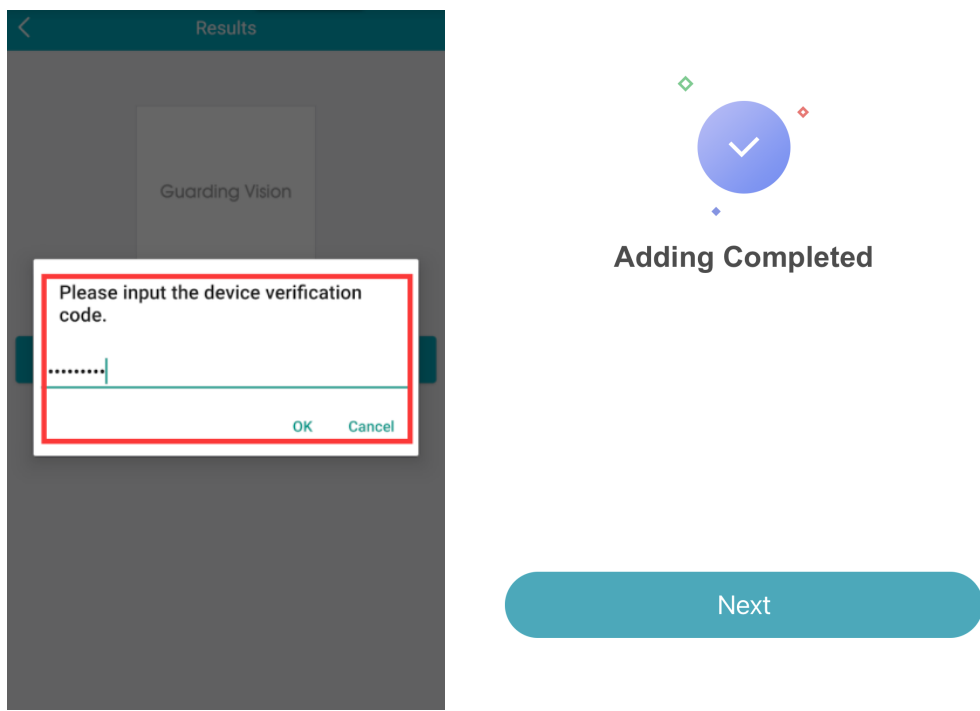


Figure 5-9 Adding Completed

7. Click on the camera to view the live image.

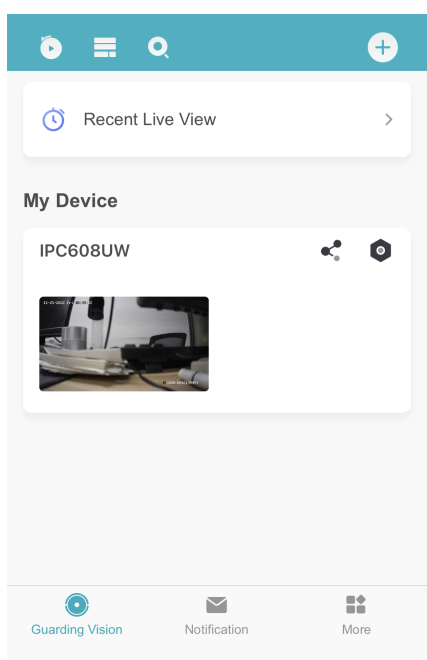


Figure 5-10 Device list