

peachtree audio



musicBox





Safety Guidelines

Important Safety Instructions

- 1) Read these instructions – All the safety and operating instructions should be read before this product is operated.
- 2) Keep these instructions – The safety and operating instructions should be retained for future reference.
- 3) Heed all warnings – All warnings on the appliance and in the operating instructions should be adhered to.
- 4) Do not use this apparatus near water – The appliance should not be used near water or moisture – for example, in a wet basement or near a swimming pool, and the like.
- 5) Clean only with dry cloth.
- 6) Do not block any ventilation openings. Install in accordance with the manufacturer's instructions.
- 7) Do not install near any heat sources such as radiators, heat registers, stoves, or other apparatus (including amplifiers) that produce heat.
- 8) Do not defeat the safety purpose of the polarized or grounding plug. A polarized plug has two blades with one wider than the other. A grounding plug has two blades and a third grounding prong. The wide blade or the third prong is provided for your safety. If the provided plug does not fit into your outlet, consult an electrician for replacement of the obsolete outlet.
- 9) Protect the power cord from being walked on or pinched particularly at the plugs, convenience receptacles, and at the point where they exit from the apparatus.
- 10) Only use attachments/accessories specified by the manufacturer.
- 11) Unplug the apparatus during lightning storms or when unused for long periods of time.
- 12) Refer all servicing to qualified personnel. Servicing is required when the apparatus has been damaged in any way, such as power supply cord or plug is damaged, liquid has been spilled or objects have fallen into the apparatus has been exposed to rain or moisture, does not operate normally, or has been dropped.
- 13) Please keep the unit in a good ventilation environment.
- 14) **CAUTION:** These servicing instructions are for use by qualified service personnel only. To reduce the risk of electric shock, do not perform any servicing other than that contained in the operating instructions unless you are qualified to do so.
- 15) **WARNING:** To reduce the risk of fire or electric shock, do not expose this apparatus to rain or moisture. The apparatus shall not be exposed to dripping or splashing and that no objects filled with liquids, such as vases, shall not be placed on apparatus.
- 16) **18. WARNING:** The mains plug/appliance coupler is used as disconnect device, the disconnect device shall remain readily operable.
- 17) - The lightning flash with arrowhead symbol within an equilateral triangle is intended to alert the user to the presence of non-insulated "dangerous voltage" within the product's enclosure that may be of sufficient magnitude to constitute a risk of electric shock.
 - Warning: To reduce the risk of electric shock, do not remove cover (or back) as there are no user-serviceable parts inside. Refer servicing to qualified personnel.
 - The exclamation point within an equilateral triangle is intended to alert the user to the presence of important operating and maintenance instructions in the literature accompanying the appliance.
- 18) **WARNING:** For the terminals marked with symbol of " " may be of sufficient magnitude to constitute a risk of electric shock. The external wiring connected to the terminals requires installation by an instructed person or the use of ready-made leads or cords according to manufacturer's instruction.

Unpacking and Warranty

- 1) Keep all packing materials for future shipments. (service)
- 2) Keep a record of your bill of sale and a copy of the serial number for warranty and insurance purposes.
- 3) You may register your unit on our website: www.peachtreeaudio.com.

musicBox

■ Introduction

■ Front Panel

■ Back Panel

■ Connections

■ Remote Control

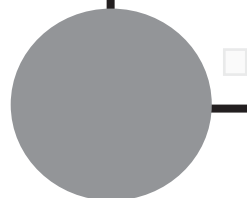
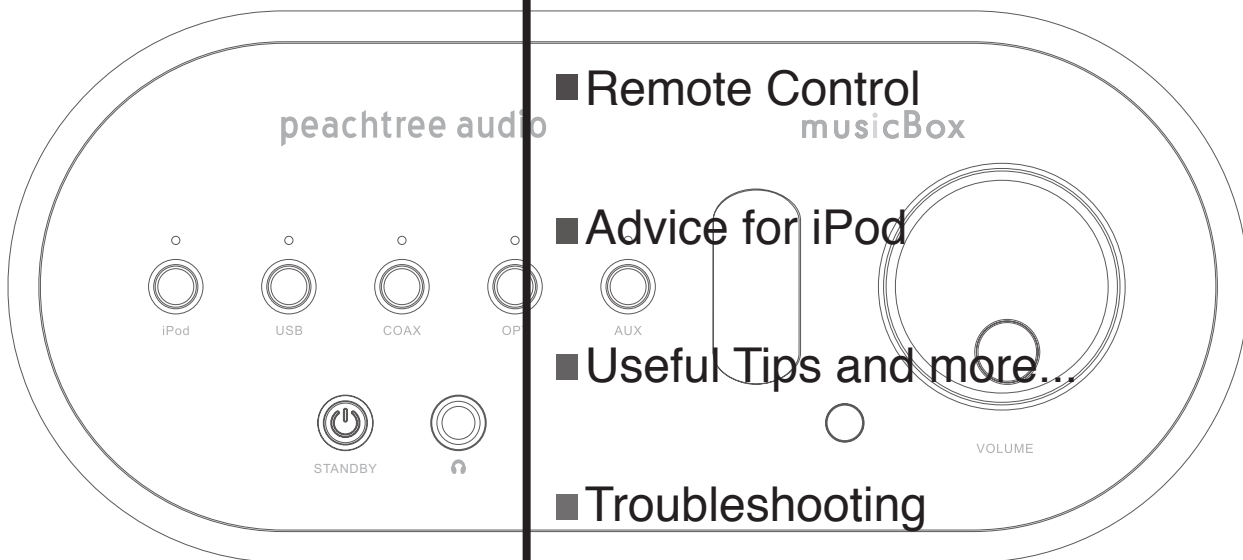
■ Advice for iPod

■ Useful Tips and more...

■ Troubleshooting

■ Product Guarantee and Service

■ Compatibility for iPod



Introduction

Thank you for purchasing the Peachtree Audio musicBox!

At Peachtree Audio we try to design products that provide a magical musical experience. When you connect the digital output from a Sonos player, a Squeezebox, an Apple TV or Apple Airport Express you'll get the full benefit of the quality built into these products. And when you connect your computer to the musicBox's digital USB input - we think you're going to love what you hear from your music library! The ability of the musicBox's internal digital to analog converter to process and play compressed and uncompressed music files from your computer's hard drive - or from any of your favorite digital program sources - makes the musicBox a "must have" in your office, on your desktop, in the kitchen, in the den, or in the bedroom. Anywhere you listen to music from your computer - that's where the musicBox belongs!

And . . . prepare your ears for a special treat when you plug your supported iPod into the musicBox's built-in iPod dock. The musicBox takes the digital bitstream from your iPod and sends it to the musicBox's own high-performance internal DAC. From there the vacuum tube preamplifier circuitry and the MOSFET power amplifier of the musicBox work their magic. The result? Sound from your iPod rivaling that of expensive audiophile-grade CD players!

This manual is a guide to the functions of your musicBox. It shows you how to connect both digital and analog sources, and offers tips on getting the best performance. The ability to mate with virtually any digital source, while providing superior sound in a small and elegant package, makes the musicBox a special product. It's one we're proud to offer.

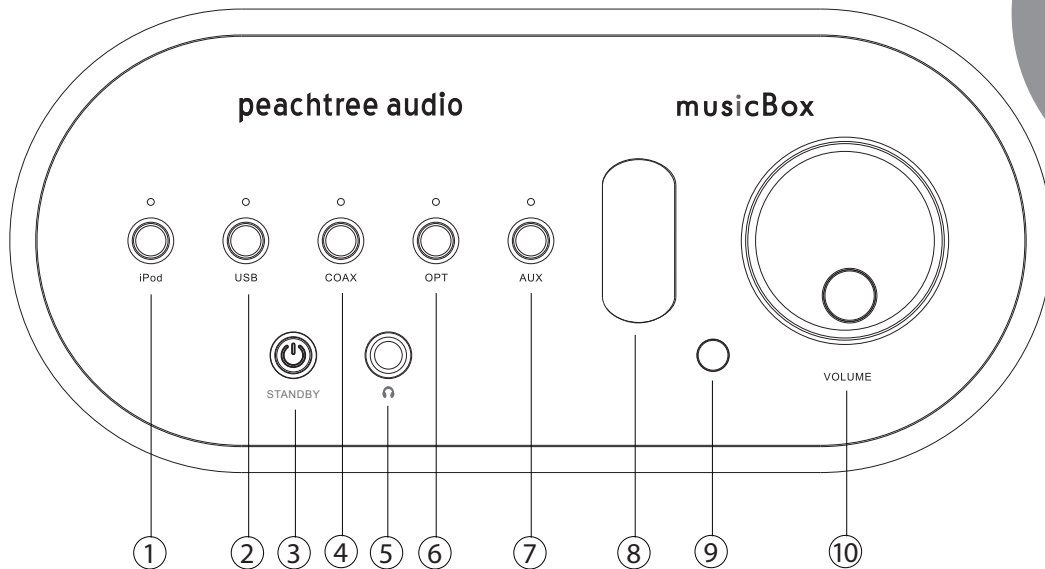
We sincerely hope the musicBox provides you with years of enjoyable music listening. Visit our website at www.peachtreeaudio.com for tips on getting the best sound from the music stored on your computer, and from all your digital sources. Contact your dealer or us directly if you have questions. Also, now is a good time to go to www.peachtreeaudio.com to register your musicBox purchase.

Thanks again - and Happy Listening!

The Folks at Peachtree Audio

musicBox

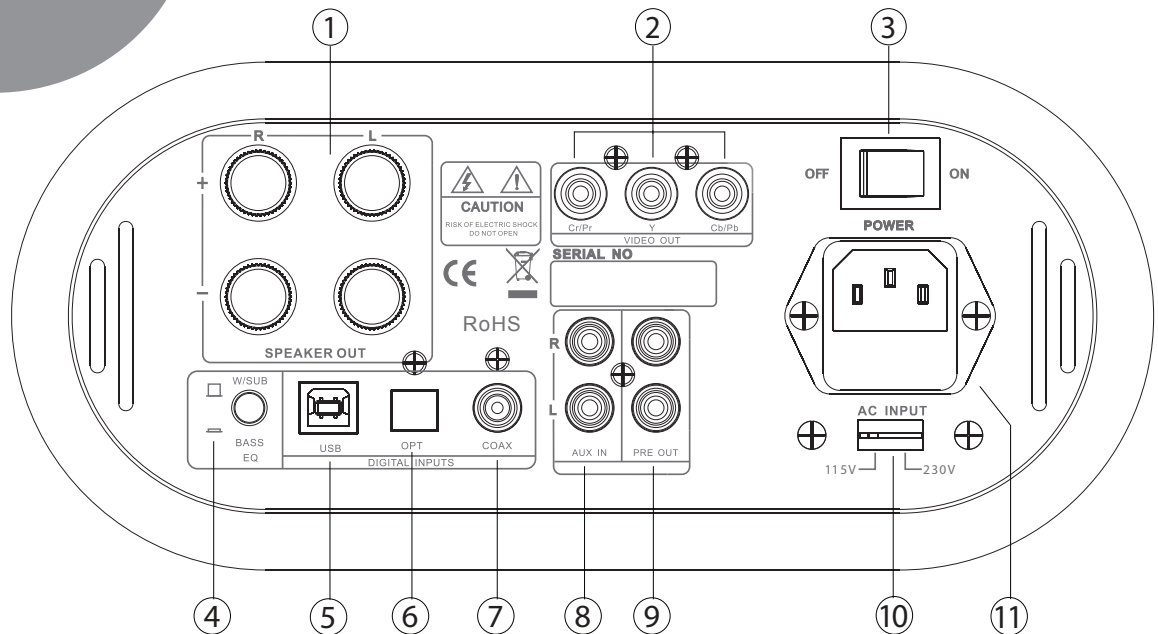
Front Panel



- 1) **iPod Input:** Push to hear the digital signal from an iPod connected to the iPod dock on top of the musicBox. The LED above the button will glow blue when this input is selected.
- 2) **Digital USB input:** Push to hear music from your connected computer or other USB audio source. The LED above the button will glow blue when this input is selected.
- 3) **Standby:** The musicBox is in standby mode when this button glows green. Push to power on the musicBox; the button will light up blue. When you are finished listening, push again to return to standby mode. Note: If this button is not lit up with either a green or blue light, this means the power switch on the rear panel of the musicBox is in the off position. Under normal conditions the rear panel power switch should be kept in the on position, using the front panel standby button to turn the musicBox “on” and “off”.
- 4) **Digital Coax Input:** Push to hear music from a component you have connected via a digital coaxial cable, such as a CD player, DVD player, Sonos Zone Player, Logitech Squeezebox or other digital source. The LED above the button will glow blue when this input is selected.
- 5) **Headphone Output:** Connect high quality headphones directly. (If your headphones are equipped with a mini plug you’ll need an adapter to connect to this full size jack.) The audio signal to the speakers is fully muted when headphones are connected.
- 6) **Optical Digital Input:** Push to hear music from a component you have connected via a digital optical cable (toslink), such as a CD player, DVD player, Sonos Zone Player, Logitech Squeezebox, Apple TV or other digital source. The LED above the button will glow blue when this input is selected.
- 7) **Aux Input:** Push to hear music from a source such as an FM tuner, tape deck or CD player that you’ve connected with stereo RCA cables. The LED above the button will glow blue when this input is selected. If you want to connect a turntable to this input you’ll need a phono preamp - see the Connections page for more information.
- 8) **Tube (valve) Window**
- 9) **Infrared Remote Sensor:** Aim your remote control at this sensor for the best results.
- 10) **Volume Control**

musicBox

Back Panel



1) Speaker Terminals

2) Component Video Out (from iPod)

3) On-Off Switch

4) **Bass EQ:** For using the musicBox with a small bookshelf speaker like the Peachtree Audio mB3. See “Bass EQ” on the Connections page of this manual for the proper setting when using a full-range speaker or subwoofer.

5) **USB Digital Input:** To connect directly to your computer via a USB cable.

6) **Optical Digital Input:** For optical digital sources.

7) **Coaxial Digital Input:** For coaxial digital sources.

8) **Aux Input:** For analog line level input. You will need an additional phono preamp for use with turntables.

9) **Pre Out:** This variable output is for connecting an external amplifier or powered subwoofer.

10) **Voltage Switching:** For international use. Unplug the musicBox before you make the switch and be sure to use the proper fuse for the voltage chosen. ****warning**** Improper voltage setting may cause damage to the musicBox.

11) **AC Power Cord Attachment and Fuse:** The power cord is included in the musicBox packaging. Fuse is user replaceable after turning the musicBox off. You may call your dealer or Signal Path’s service department with any questions regarding fuse replacement. ****warning**** using the wrong value fuse may cause damage to the musicBox and is a potential safety fire hazard.

- **Coaxial Digital Input:** Connect the coaxial output from any digital source, using a coaxial digital cable. Push the “COAX” input button on the front panel of the musicBox to listen to your connected source component.

- **Optical Digital Input (sometimes called Toslink):** Connect the optical output from any digital source, using an optical digital cable. Push the “OPT” input button on the front panel of the musicBox to listen to your connected source component.

- **USB Digital Input:** Connect the USB output from a computer (or other source component which can output audio via USB) using a USB cable. Push the “USB” input button on the front panel of the musicBox to listen.

- **Aux Input:** Connect the left and right channel outputs from a tuner, tape deck or other analog source component. Push the “AUX” input button on the front panel of the musicBox to listen to your connected source component. You can connect a turntable to the aux input of the musicBox if you wish; however, you’ll need to send the left and right channel signals from your turntable to an external phono preamplifier first. You can then connect the outputs of the phono preamplifier to the left and right aux inputs of the musicBox. (Some turntables have a phono preamplifier built in and can be connected directly to the musicBox aux inputs.) We recommend you consult your dealer for recommendations on properly hooking up your turntable to the musicBox.

- **Component Video Out:** This allows a high-resolution pass-through of a video signal from your iPod (when connected to the iPod dock on the musicBox). Using a set of component video cables, connect to the component video inputs of a television, A/V receiver or A/V preamp/processor. Video quality will be dependent upon the quality of the video program stored on your iPod.

- **Speaker Output:** Connect your speakers to the left and right speaker terminals of the musicBox using high quality speaker wire. Be sure to observe correct polarity when you make your connections. Connect the “+” terminal on each speaker to the corresponding “+” terminal on the musicBox; likewise for the “-” terminals. Also, be sure not to let stray strands of speaker wire from one terminal touch another terminal or another wire. The musicBox is designed to drive one pair of speakers with a rated output impedance of between 4 and 8 ohms. It is not advisable to use more than one pair of speakers with the musicBox.

- **Bass EQ:** Push in the “Bass EQ” button to engage the bass boost function of the musicBox. This boost has been designed to complement the bass roll-off characteristics of the matching Peachtree Audio mB3 speakers, but should work well with most small bookshelf speakers. (Depending upon your speakers and their placement in the room, your music, and your personal listening tastes you may prefer the sound of your system either with or without the Bass EQ function engaged. There is no “right or wrong” here - let your ears be your guide!) The “Bass EQ” button should be left out (not pushed in) when using the musicBox with larger full-range speakers or with a subwoofer.

- **Pre Out:** The stereo preamplifier output jacks provide flexibility in maximizing the performance of your musicBox-based audio system.

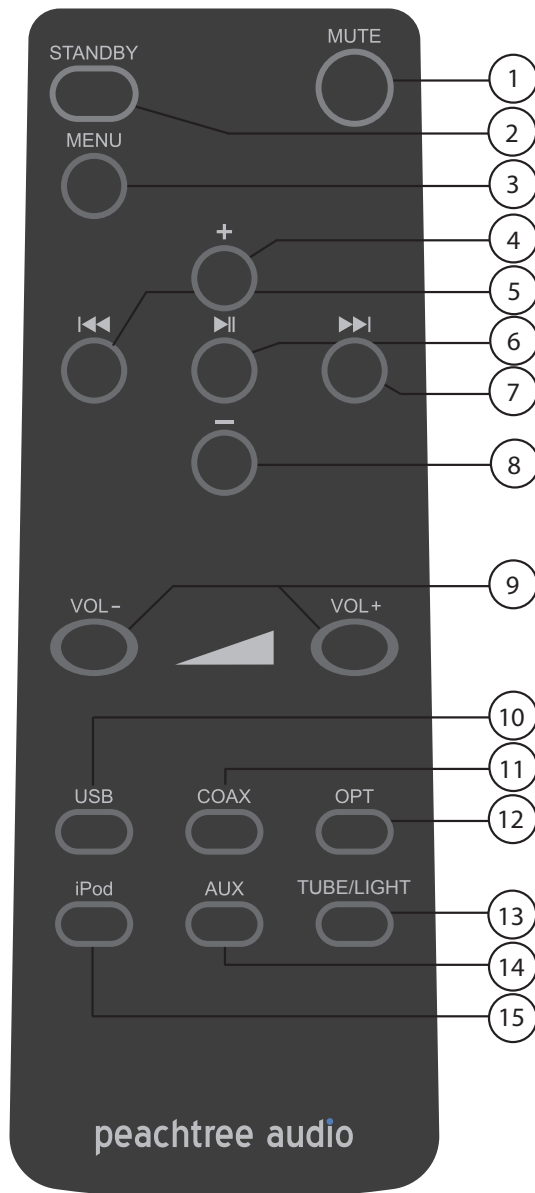
External Amplifier

The musicBox does not limit you to using its internal amplifier to drive your speakers. If you wish, you may connect a more powerful external amplifier to drive your speakers - provided your speakers can handle the extra power, of course! (If you have a question regarding suitability of a particular amplifier for your speakers please consult your dealer.) Be sure the musicBox and the external amplifier are both turned off. Connect a stereo RCA cable from the musicBox “Pre Out” jacks to the stereo RCA inputs of the external amplifier; connect your speaker wires to the speaker terminals of the external amplifier. To listen to music turn on the musicBox first, then the external amplifier; reverse this sequence when turning the system off. You are now using the musicBox as a high quality digital and analog preamplifier, controlling a music system limited in power only by your budget and your ears!

Subwoofer Output

(There are several different ways to connect a subwoofer in a music system. Refer to your speaker and subwoofer manuals for instructions for your particular system.) If you are using a subwoofer that requires (or accepts) a “line in” connection from your amplifier, connect a stereo RCA cable from the musicBox “Pre Out” jacks to the subwoofer stereo input jacks. If your subwoofer has only one “line in” jack, you may use a single RCA cable from either the left or right musicBox “Pre Out” jacks. Even with this single-cable hook up you will lose little or no musical information, since most recordings mix bass frequencies in mono.

Remote Control



- 1) **Mute:** This button will mute the musicBox.
- 2) **On/Standby**

Buttons 3-8 are for control of your iPod docked in the musicBox

- 3) **Menu:** This button has two functions. (1) Pressing this button quickly will access the menu function of the iPod. (2) Holding this button down for a couple seconds will “select” the highlighted song or play list
- 4) **+/-:** or Scroll up-Scroll down. These buttons allow the user to scroll up or down to access songs or playlists within the menu function. Holding the Menu key down for a couple seconds will perform the “select” function. (see #3 Menu).
- 5) **Skip back:** This button skips back to the beginning of a music or video selection except when the track has played for less than 10 seconds. Then it will skip back to the beginning of the previous track.
- 6) **Play/Pause:** This button will start (“Play”) or stop (“Pause”) your music or video selection. They operate in sequence. After activating “Play” the next push of the button activates “Pause.”
- 7) **Skip Forward:** This button skips ahead to the next music or video selection.
- 8) **+/-:** or Scroll up-Scroll down. These buttons allow the user to scroll up or down to access songs or playlists within the menu function. Holding the Menu key down for a couple seconds will perform the “select” function. (see #3 Menu).

Buttons 9-16 are for control of the musicBox

- 9) **Volume - / Volume +:** These buttons reduce or increase volume level
- 10) **USB:** This button selects a digital audio source at the USB connection.
- 11) **Coax:** This button selects a digital audio source at the Co-axial digital connection.
- 12) **Opt:** This button selects a digital audio source at the Optical (or Toslink) connection.
- 13) **Tube /Light:** This function will allow the user to dim the bright LEDs under the tube and on the front panel.
- 14) **Aux:** This button selects an analog audio source at the Aux connection.
- 15) **iPod:** This button selects the iPod docked in the musicBox as your audio source.

Supported iPod Models

Made For:

iPod touch (1st and 2nd generation)

iPod classic (80G, 120G, 160G only)

iPod nano (2nd, 3rd, 4th, and 5th generation)

Advice
for
iPod

Installing Dock Inserts for iPod

The musicBox comes with several dock inserts that accommodate compatible iPod models. After identifying the proper insert for your particular iPod, position it in the dock with the two slits inside the insert facing the front of the musicBox. It should click in to place over the multi-pin connector. You can remove the inserts by applying gentle pressure to the inside back of the insert and pushing upward.

Connecting Your iPod

After installing the dock insert you can connect your iPod. Slide the iPod gently into the dock insert making certain to properly align the connector in the insert with the connector on the bottom of your iPod. Do Not Force the iPod down on the connector. You may damage it and cause it to malfunction. You should only need a gentle but firm push to make the proper connection.

The Remote Buttons for Your iPod

⏮: This icon represents the previous track button. It shifts the iPod playback to the beginning of the current track, or if the song is 10 seconds or less in to the track it will shift to the beginning of the previous track.

⏭: This icon represents the next track button. It shifts the iPod playback to the next track.

⏸: This symbol is the Play/Pause button. It switches the iPod between play and pause modes. When in play, it will activate pause when pushed. When in pause it will activate play when pushed.

Menu: This button has two functions. (1) Pressing this button quickly will access the menu function of the iPod. (2) Holding this button down for a couple seconds will “select” the highlighted song or playlist.

-/+: or Scroll up and Scroll down: These buttons allow the user to scroll up or down to access songs or playlists within the menu function. Remember: Holding the Menu key down for a couple seconds will perform the “select” function. (See #3 Menu on the Remote Control page.)

Performance Plus

We always recommend storing your music at high bit rates. If you use Apple Lossless or WAV files it will take up more storage space but certainly sound better. With a system like the musicBox it will be immediately apparent that it sounds better than low bit rate files. For more information on performance optimization please visit our website at www.peachtreeaudio.com.

Static Charges and Voltage Surges

While the musicBox has more than adequate ESD protection, it is always advisable to avoid static charges. They can sometimes cause your system to lock up or even damage it. Voltage surges and power outages can also create functional problems. We suggest re-booting the musicBox and follow the reset instructions in your iPod manual if you suspect malfunctions due to a static charge, power outage or voltage surge.

musicBox

Useful Tips

At Peachtree Audio we think that products should be easy to use. Therefore, we don't require any custom USB drivers or software programs in order to listen to your music from your computer. The musicBox's USB audio input is used to take music files from your computer's hard drive and play them back with superb fidelity.

While some of the wording and steps vary somewhat between Macintosh computers and PCs, the basic instructions are very similar.

USB Connections

PC

- 1) Connect the USB terminal on the musicBox to a USB connection on your computer.
- 2) Your computer will "see" the USB Audio DAC inside the musicBox. You may get a "USB AUDIO DAC" pop-up box but it's not necessary.
- 3) Right click the speaker icon on the bottom of your screen.
- 4) Select "Audio" tab.
- 5) Using the drop-down box choose USB AUDIO DAC.
- 6) Click OK.
- 7) Launch Music Program and play.

Mac

- 1) Later Mac setup may vary but the basic instructions are outlined below.
- 2) Click on to System preferences.
- 3) Click on to the speaker icon.
- 4) Under the sounds tab you should see a window that offers USB Audio DAC. Click on to USB Audio DAC.
- 5) Launch iTunes and enjoy your music.

Once you do this setup your computer should recognize the USB Audio DAC and default to it when plugged in. If you unplug the USB connections and reboot your music before re-connecting first, you may find that you have to go back through some steps, This is not unusual.



Other Helpful Tips

- 1) For the best sound when listening to music from your computer, set your computer and music program volume controls to maximum and use the musicBox volume knob or remote control as the master volume control.
- 2) For critical listening to music from your computer, avoid keeping multiple programs open. It can compromise the sound quality and even cause signal dropouts.
- 3) Avoid plugging and unplugging the USB input multiple times in a short time span. It usually is not a problem but increases the chance of a voltage spike to the USB input.
- 4) Give the musicBox adequate ventilation as it will get fairly warm.

We'll post articles and other helpful tips on getting the best sound from your computer's music files, your iPod, and your other digital music sources. Visit us at our website:
www.peachtreeaudio.com



Interested in the Green Movement?

- 1) The musicBox meets the European RoHS standards for non-hazardous metals.
- 2) The musicBox utilizes a standby transformer that draws less than a watt in the US and less than 2 watts in countries with 220V electrical service.
- 3) We will continue to investigate more ways of making our products environmentally friendly. Feel free to e-mail us with your suggestions.

musicBox

Trouble Shooting

The musicBox will not turn on	Make sure the on/off switch on the rear panel is turned on. Check to be sure the AC plug is connected. Check the fuse.
The musicBox turns on but there is no sound	Be sure you have the proper input selected. Make certain the mute isn't engaged. Determine if your source is on. If the input button is blinking then your digital signal is not locked. Check your cable for connections and your source to be sure it is on and playing.
The remote control doesn't work	Please check the batteries by removing the cover on the back of the remote. It is an infrared remote so it needs a clear line of sight to the sensor on the front panel of the musicBox.
You intermittently lose your signal on the USB input	The first thing to try is rebooting the music server program (iTunes, Foobar, WMP, etc) and see if that works. Then try turning the musicBox off, then re-boot your computer. Then turn the musicBox back on. If the computer still doesn't recognize the USB DAC repeat the process and also unplug the USB cable from the computer and the musicBox, then plug it back in right before re-booting. These are computer devices, and sometimes you'll lose a signal just like your printer or any other USB device. You should not have this problem often. We designed the musicBox to remain locked on the USB signal at all times, but sometimes you can still get a signal dropout.
You pick up hum and noise through your musicBox in your office system	This can require some trial and error diagnostics. If you have music files stored on a laptop computer, hook it up to the musicBox and a pair of speakers using battery power. If it works properly with no noise then your computer in your office is introducing a ground loop into the system. This is not uncommon; but the musicBox has transformer coupled digital inputs to minimize this problem. If problems persist, please feel free to contact Signal Path.
When you switch from one source to another you get a loud "click" or "pop"	Sometimes this is from static buildup but it should not occur consistently over a long period of time. Contact your dealer or Signal Path if this persists.
Your coaxial digital connections do not sound quite right	You must use a wide bandwidth 75 ohm digital interconnect in this application. If you use a standard audio RCA cable the results will not be nearly as good. This is not an unusual mistake as the two interconnects look identical but sound different.
Your iPod doesn't sound quite right through the musicBox	Your iPod offers custom equalizations for headphone use that aren't necessary with the musicBox and a good pair of speakers. Use a "flat" response and be sure the iPod volume is set to match the other components in your system. If you find that you still need equalization, then start at "flat" and make your settings from that point.



International Guarantee and Claims Under Warranty



International Guarantee

The musicBox has a 1 year Parts and Labor guarantee from the time of purchase. Tubes are covered for 6 months. Units that are covered under this guarantee include musicBox's purchased from an authorized musicBox distributor or dealer.

Signal Path can take no responsibility for defects arising from accident, misuse, abuse, wear and tear, neglect or through unauthorized adjustment and/or repair. The warranty does not cover shipping costs. Visit www.peachtreeaudio.com for a copy of the complete warranty.

Claims Under Warranty

The equipment should be packed in its original packing and returned to the dealer from whom it was purchased, or if unavailable, directly to the musicBox distributor.

You should use a suitable carrier. Do Not Send By Postal Service. Signal Path cannot accept responsibility for the musicBox while in transit to the dealer, distributor, or service facility. Please insure the unit against loss or damage while in transit.

In the unlikely event that you experience a failure with your musicBox, please call for a return authorization number before returning products for service. Any musicBox received without an RA # will be refused. You may also wish to route your repair through your dealer, which we encourage.

Call 704-391-9337 for a return authorization number and additional information on where and how to return your unit for service.

Main office (not service)

Signal Path International
2045 120th Avenue NE
Bellevue, WA 98005

www.signalpathint.com

S I G N A L  P A T H

musicBox

Compatibility for iPod

To provide you with extraordinary sound the musicBox takes the digital signal directly from your iPod and routes it to the musicBox's built-in high-performance digital to analog converter. The table below shows the iPods that are compatible with the musicBox.



iPod touch
2nd generation
8GB 16GB 32GB 64GB



iPod classic
80GB



iPod nano
5th generation (video camera)
8GB 16GB



iPod touch
1st generation
8GB 16GB 32GB



iPod classic
120GB 160GB (2009)



iPod nano
4th generation (video)
8GB 16GB



iPod nano
3rd generation (video)
4GB 8GB



iPod nano
2nd generation (aluminum)
2GB 4GB 8GB

musicBox

peachtree audio



musicBox



Made For:

iPod touch (1st and 2nd generation)

iPod classic (80G, 120G, 160G only)

iPod nano (2nd, 3rd, 4th, and 5th generation)

"Made for iPod" means that an electronic accessory has been designed to connect specifically to iPod and has been certified by the developer to meet Apple performance standards.

Apple is not responsible for the operation of this device or its compliance with safety and regulatory standards.

iPod, iPod classic, iPod nano, and iPod touch are trademarks of Apple Inc., registered in the U.S. and other countries.