



Overview:

This three section model has great strength & rigidity, providing all benefits of a two section couch, with improved patient positioning with an angle-adjustable section at both ends. Ideally suited for busy environments such as outpatients, rehabilitation, GP surgeries, health centres, colleges, universities & various private clinics. The couch is available with a choice of hydraulic or electric height adjustment & features a manually adjustable backrest, for supporting the patient in a sitting position, and foot section which can be lowered to relieve pressure from knees & hips during these procedures. The couch can be positioned with the head section flat or in negative position for prone or supine lying examinations & a wide variety of options are available to personalise the couch to individual user requirements.



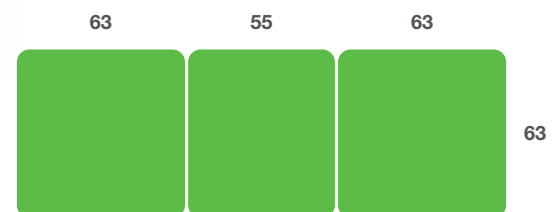
Standard Features

- UK designed & manufactured
- Lifetime frame & 5 year parts guarantee
- 16 year average lifespan
- Safe working load & lift capacity 250kg
- Electric or hydraulic height adjustment
- Manually adjustable back & foot sections
- Anti-entrapment gas struts
- Hardwearing antimicrobial vinyl
- Retractable castor base
- Comfort foam
- Easy operation
- Hoist clearance 13cm (5")

Overall Dimensions

Length: 183cm (72") approx
 Width: 63cm (25") approx
 Height: 47cm - 97cm approx

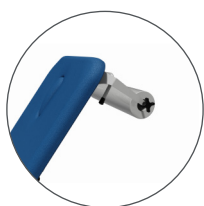
Upholstery Dimensions



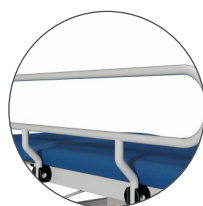
Options & Accessories



Breathing Hole



Paper Roll Holder



Side Security Rails



D Cushion

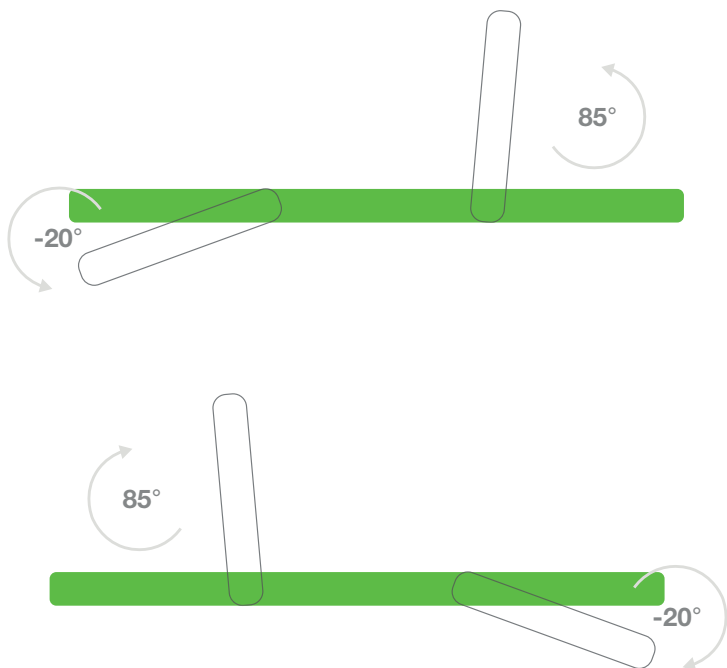


Footswitch



Motorised Backrest

Operational Parameters



Model 502E - Electric Version

Model 502H - Hydraulic Version

Upholstery Vinyl - Phthalate Free

- Flame retardant to CRIB 5
- Independantly tested to verify effectiveness at reducing the spread of MRSA, E.coli and other similar bacteria and fungi
- Rated at 1,000,000 Martindale rubs without damaging or marking the top layer, making it suitable for all high traffic, heavy duty areas



Jasmine



Battleship



Cobalt



Cocoa



Grape



Mulled Wine



Pillarbox



Gingersnap



Candy



Applemint



Sapphire



Atlantic Blue



Lupin



Denim



Cool Blue



Rainforest



Wasabi



Citrus Green



Marigold



Almond

Product Benefits

- UK designed & manufactured with long-term support
- Lifetime frame and 5 year parts guarantee providing longevity of product life and value for money
- Safe working load of 250kgs to cater for very heavy patients
- Choice of hydraulic or electric height operation to suit user or environmental requirements
- Manual adjustment of back and foot rest angles to support the patient in sitting or lying positions
- Back and foot rests adjust between -20° for prone treatments and 85° for supporting the patient in a sitting position
- Low patient transfer height of 47cm (18")
- Retractable castor base system for ease of transport and positioning
- Option of footswitch height operation on electric model
- Hardwearing, easy to clean antimicrobial upholstery vinyl in a wide choice of colours
- Hoist clearance below frame 13cm (5") for hoist access

Technical Standards

- Safe Working Load & Lifting Capacity 250kg (550lb / 39 Stone)
- IP Rating - IPx4
- EE Classification - MDD93/42/EEC Annex IX Class 1
- Electrical Standard - IEC601 Part 1 + 60601. P (EN)
- Vinyl flame retardant to CRIB 5 (BS 5852)
- Foam flame retardant to BS 5852: Part 2: 1982, Ignition Source 5 [CRIB 5]
- CE Marked
- Externally audited to ISO9001:2008 by LQRA

Plinth Medical Ltd.
Barric Lane
Occold
Eye
Suffolk, IP23 7PX

t: +44 (0) 1449 767887
e: sales@plinthmedical.com

www.plinthmedical.com

Plinth | Medical

