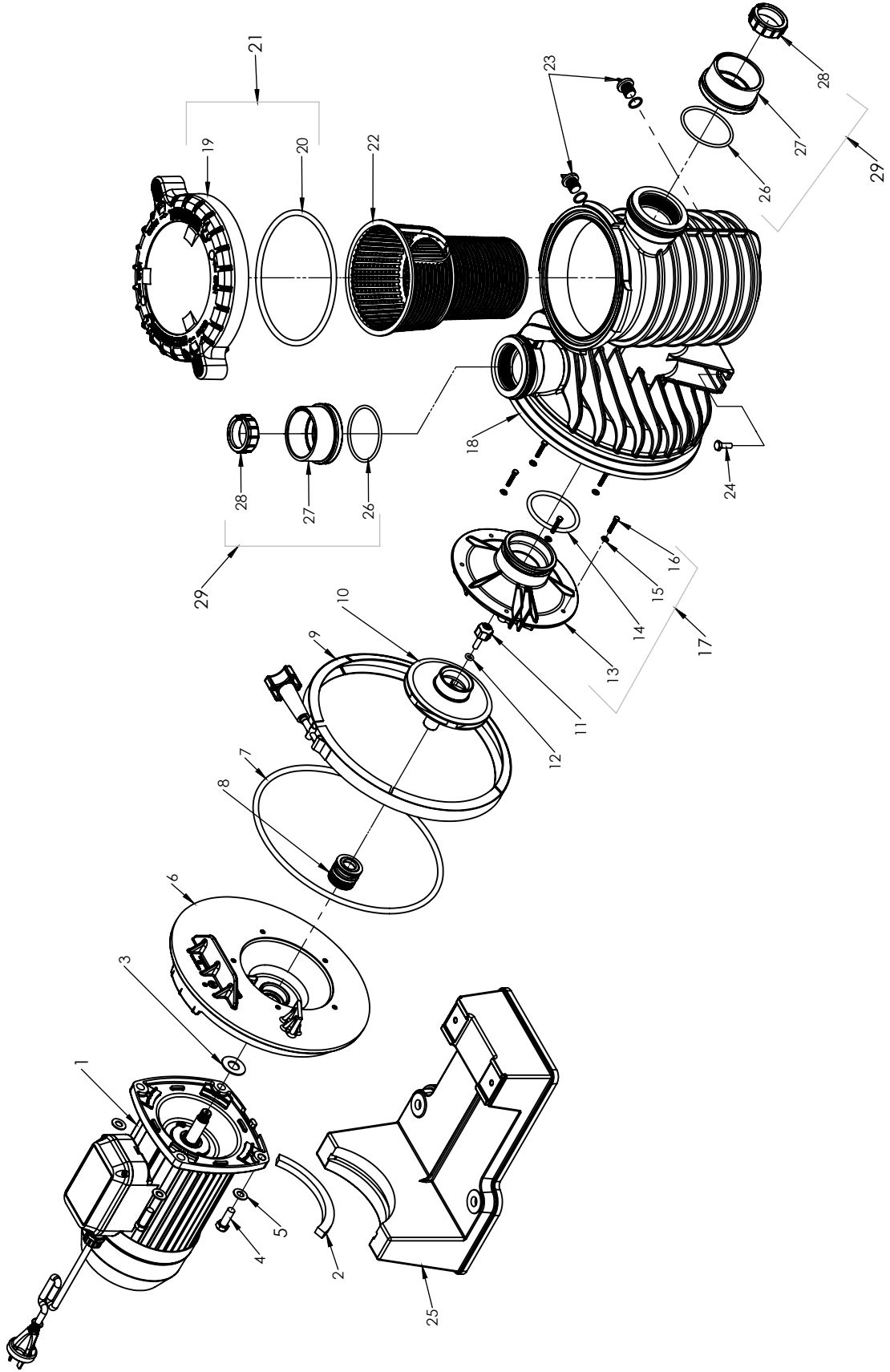


MAX-E-PRO® SERIES PUMP REPLACEMENT PARTS



⁵ Pumps built after 8/29/07.

⁶ Pumps built on or before 8/29/07.

MAX-E-PRO® SERIES PUMP (CONT'D)

REPLACEMENT PARTS

Item	Description	Part No.	Part No.	Part No.	Part No.	Part No.	Part No.	Part No.	Part No.	Part No.
1	MOTOR 1 Phase	MP730100	MP930100	MP110100	MP1108100	MP1500100	MP1508100	MP2201100	MP2208100	
		801418	801419	801419	801366	801420	800565	801482	800565	
2	Motor Pad	C35-44	C35-44	C35-44	C35-44	C35-44	C35-44	C35-44	C35-44	
3	Water Slinger				Comes with Motor					
4	Screw 3/8inUNC x 1in Hex Hd S/St	702594	702594	702594	702594	702594	702594	702594	702594	
5	Washer 3/8in x 3/4in x 18g St/St	703107	703107	703107	703107	703107	703107	703107	703107	
6	Seal Plate	C103-194PSSG	C103-194PSSG	C103-194PSSG	C103-194PSSG	C103-194PSSG	C103-194PSSG	C103-194PSSG	C103-194PSSG	C103-194PSSG
7	O-ring - Body	U9-228A	U9-228A	U9-228A	U9-228A	U9-228A	U9-228A	U9-228A	U9-228A	
8	Seal	801428	801428	801428	801428	801428	801428	801428	801428	
9	Clamp	C19-37A	C19-37A	C19-37A	C19-37A	C19-37A	C19-37A	C19-37A	C19-37A	
10	Impeller Assembly (Includes 11 & 12)	C105-238PPB	C105-238PRB	C105-238PSB	C105-238PSB	C105-238PLBAB	C105-238PLBAB	C105-238PHAB	C105-238PHAB	
11	Impeller-Screw (3 phase only)				See Impeller					
12	O-RING Impeller-Screw (3 phase only)				See Impeller					
13	Diffuser	C1-271P1	C1-271P1	C1-271P1	C1-271P1	C1-271P1	C1-271P1	C1-271P1	C1-271P1	
14	O-RING DIFFUSER	U9-374	U9-374	U9-374	U9-374	U9-374	U9-374	U9-374	U9-374	
15	Lockwasher				No longer required					
16	Screw - Diffuser	707371	707371	707371	707371	707371	707371	707371	707371	
17	Diffuser-kit (Includes 13,14,15 and 16)	801273	801273	801273	801273	801274	801274	801274	801274	
18	Tank Body Assembly (specify assembly from US)	17307-0110W	17307-0110W	17307-0110W	17307-0110W	17307-0110W	17307-0110W	17307-0110W	17307-0110W	
19	Trap Cover	C3-185P	C3-185P	C3-185P	C3-185P	C3-185P	C3-185P	C3-185P	C3-185P	
20	O-ring - Trap Cover	35505-1440	35505-1440	35505-1440	35505-1440	35505-1440	35505-1440	35505-1440	35505-1440	
22	Basket	C8-58P	C8-58P	C8-58P	C8-58P	C8-58P	C8-58P	C8-58P	C8-58P	
23	Drain Plug & O-ring	U178-920P	U178-920P	U178-920P	U178-920P	U178-920P	U178-920P	U178-920P	U178-920P	
24	Screw - Base	SRU30-918SS	SRU30-918SS	SRU30-918SS	SRU30-918SS	SRU30-918SS	SRU30-918SS	SRU30-918SS	SRU30-918SS	
25	Base with Motor Pad and screws	C4-79P	C4-79P	C4-79P	C4-79P	C4-79P	C4-79P	C4-79P	C4-79P	
26	ORING - Collar Union				See Union Kit					
27	Collar Union Slip - 2"				See Union Kit					
28	Collar Union - 2"				See Union Kit					
29	Union kit (Includes 26, 27 and 28 x2)	801245K	801245K	801245K	801245K	801245K	801245K	801245K	801245K	