

PW SERIES

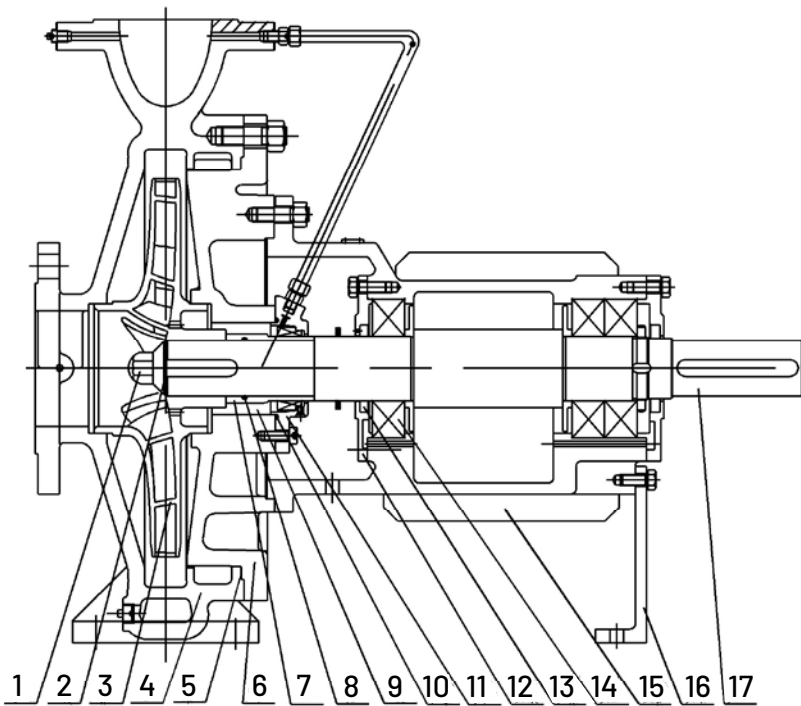
END SUCTION PUMPS

The Pentair Southern Cross PW Series End-suction pumps are your ideal solution for pressure boosting, liquid transfer, agricultural irrigation and industrial applications.



- ✓ **EXTENDED FLOW RANGE**
- ✓ **ALL HIGH GRADE 316 STAINLESS STEEL CONSTRUCTION**
- ✓ **HEAVY DUTY ISO 5199 OIL LUBRICATED BEARINGS**
- ✓ **ALL PUMPS PERFORMANCE TESTED PRIOR TO DISPATCH**

SPECIFICATION SHEET



1	Impeller Nuts	10	Mechanical Seal Gland O'ring
2	Impeller Nut Gasket	11	Mechanical Seal Gland
3	Impeller	12	Bearing Gland
4	Volute	13	Oil Seal
5	Gasket	14	Bearing
6	Backplate	15	Bearing Housing
7	Shaft Sleeve	16	Support Foot
8	Sleeve O'ring	17	Shaft
9	Mechanical Seal		

MATERIAL OF CONSTRUCTION:

The PW Pumps are offered with AS 2837 type 316, ASTM A479 Type 316 ANSI 316 Volutes, back cover and impeller to ensure high corrosion and abrasive resistant materials and long life.

FLANGE:

PW Pumps come standard with AS2129 Table E Flanges to allow for easy adaptability in the Australian market.

HEAVY DUTY BEARINGS:

the PW pump is designed with heavy duty oil lubricated, double row angular contact ball bearing and roller bearings to ensure long trouble free life.

BEARING ISOLATOR:

Offers extra protection for the bearings against contamination ingress and lubrication loss, significantly increasing reliability of rotating equipment.

TESTED:

All PW pumps are Performance tested to ISO9906 and hydrostatic tested to ensure the pump you purchase has performed in accordance with the published data to ensure reliable trouble free operation.

BACK PULL OUT DESIGN:

Allows for simple removal of rotating element without disturbing the pipework, making it easier for servicing.

SUPERIOR HYDRAULIC DESIGN:

The Pentair PW pump has been designed with the latest CFC modeling to ensure the best pump performance and highest efficiency.

FLUSH KIT:

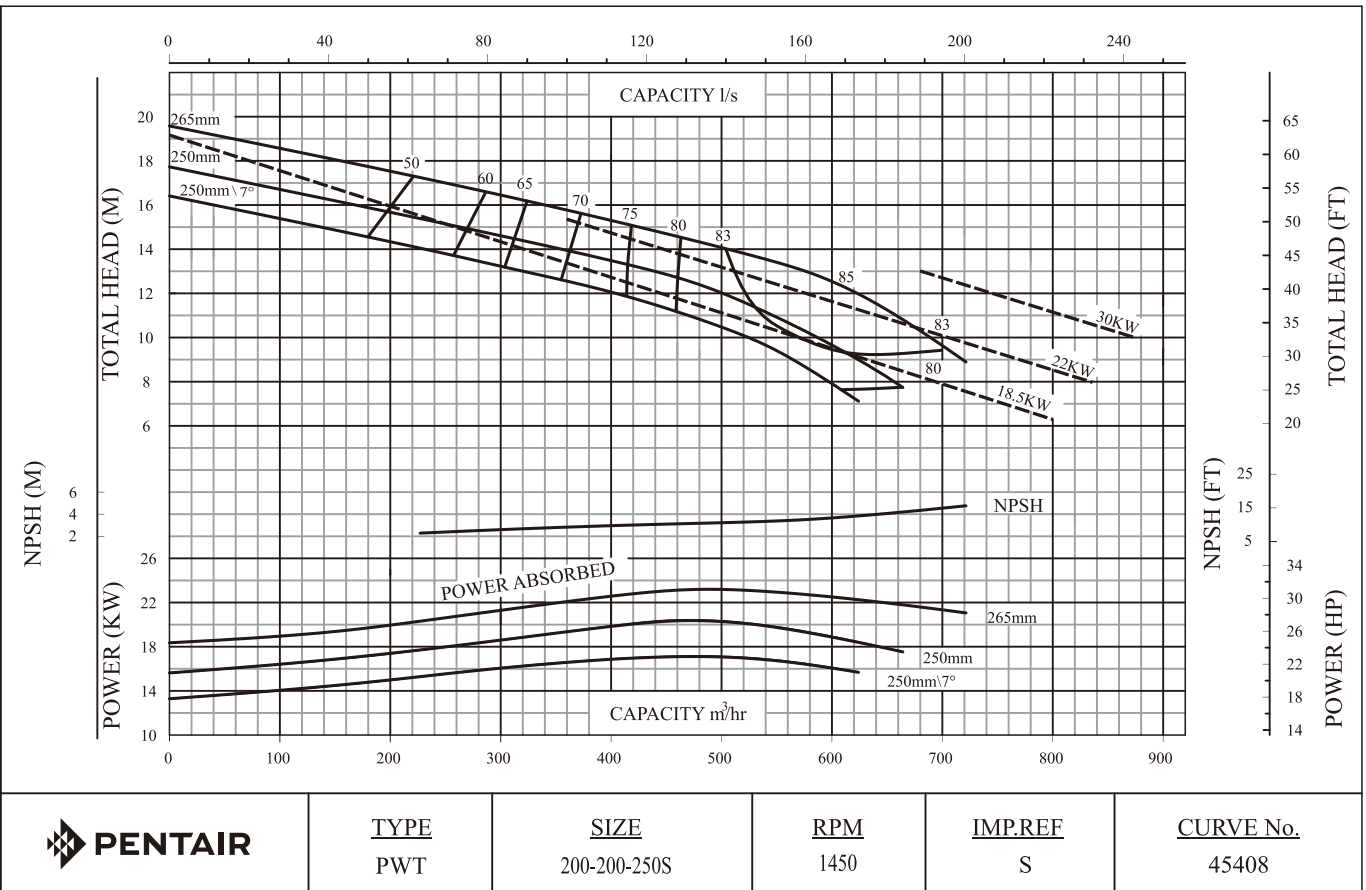
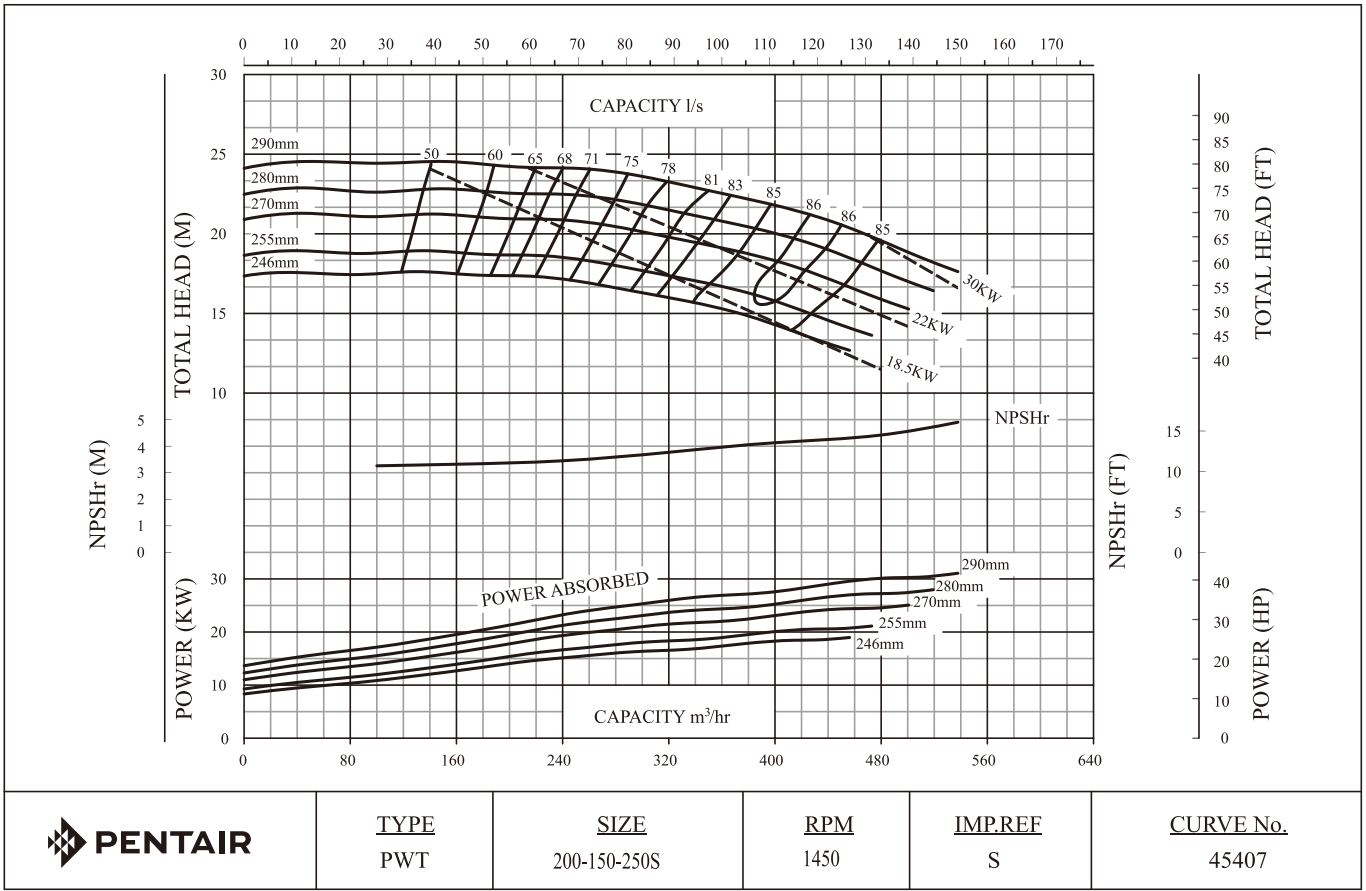
PW Pumps as standard come with a re-circulation flush that supplies high pressure water into the stuffing box area to prevent the build up of solids around the seal face to ensure long mechanical seal life.

BALANCING:

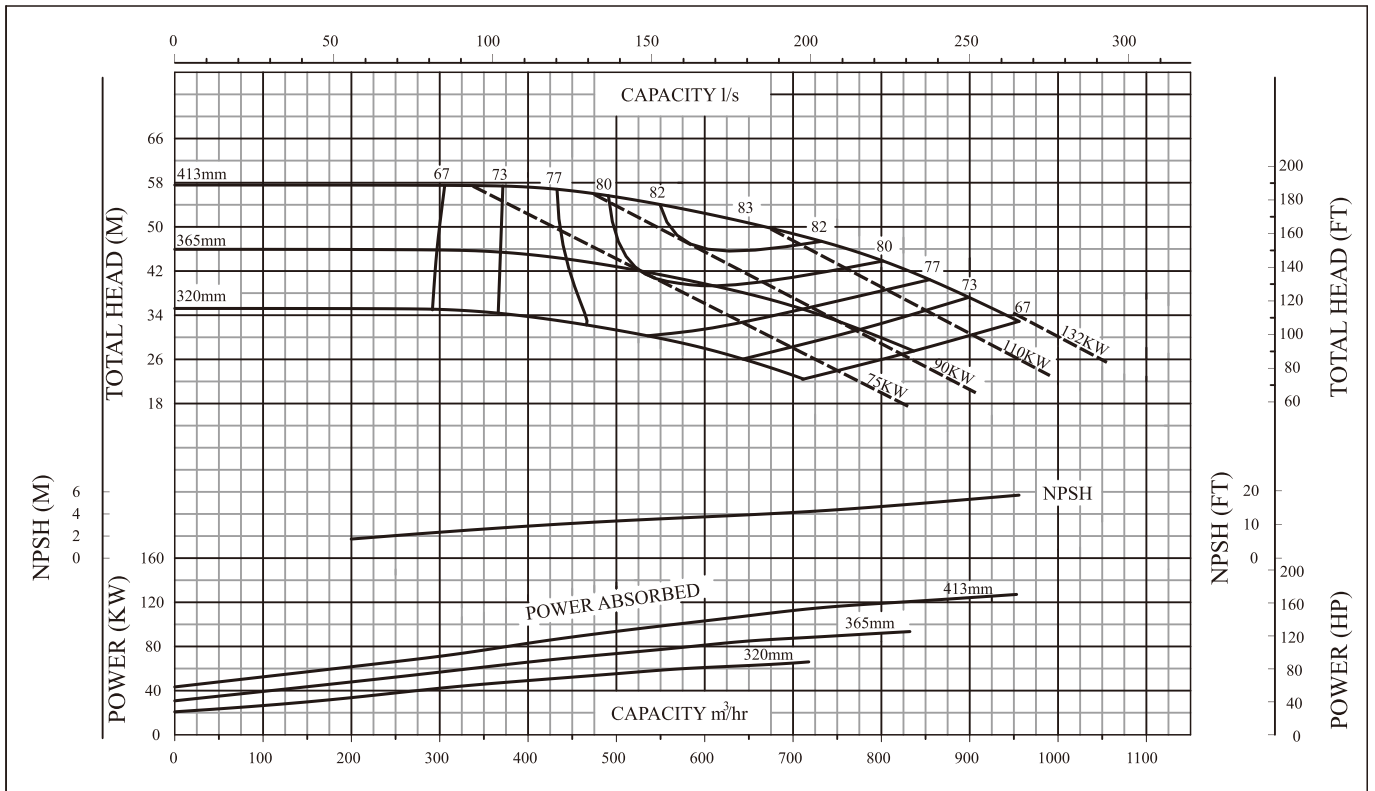
Impellers are dynamically balanced to G6.3 ISO1940-1 standard.

PART NUMBER	DESCRIPTION	MAX IMPELLER SIZE	MAX SPEED (RPM)	MAX WORKING PRESSURE
PWGH3S	PUMP SX PWT 200X150-250 S	288	1750	16bar
PWGW4S	PUMP SX PWT 200X200-250 S	265	1500	16bar
PWHK5S	PUMP SX PWT 300X250-315 S	346	1500	16bar
PWHL5S	PUMP SX PWT 350X300-315 S	395	1500	16bar
PWJJ4S	PUMP SX PWT 250X200-400 S	408	1500	16bar
PWJK5S	PUMP SX PWT 300X250-400 S	409	1500	16bar
PWJL5S	PUMP SX PWT 350X300-400 S	404	1500	16bar
PWKJ5S	PUMP SX PWT 250X200-500 S	520	1500	16bar
PWKL6S	PUMP SX PWT 350X300-500 S	520	1500	16bar

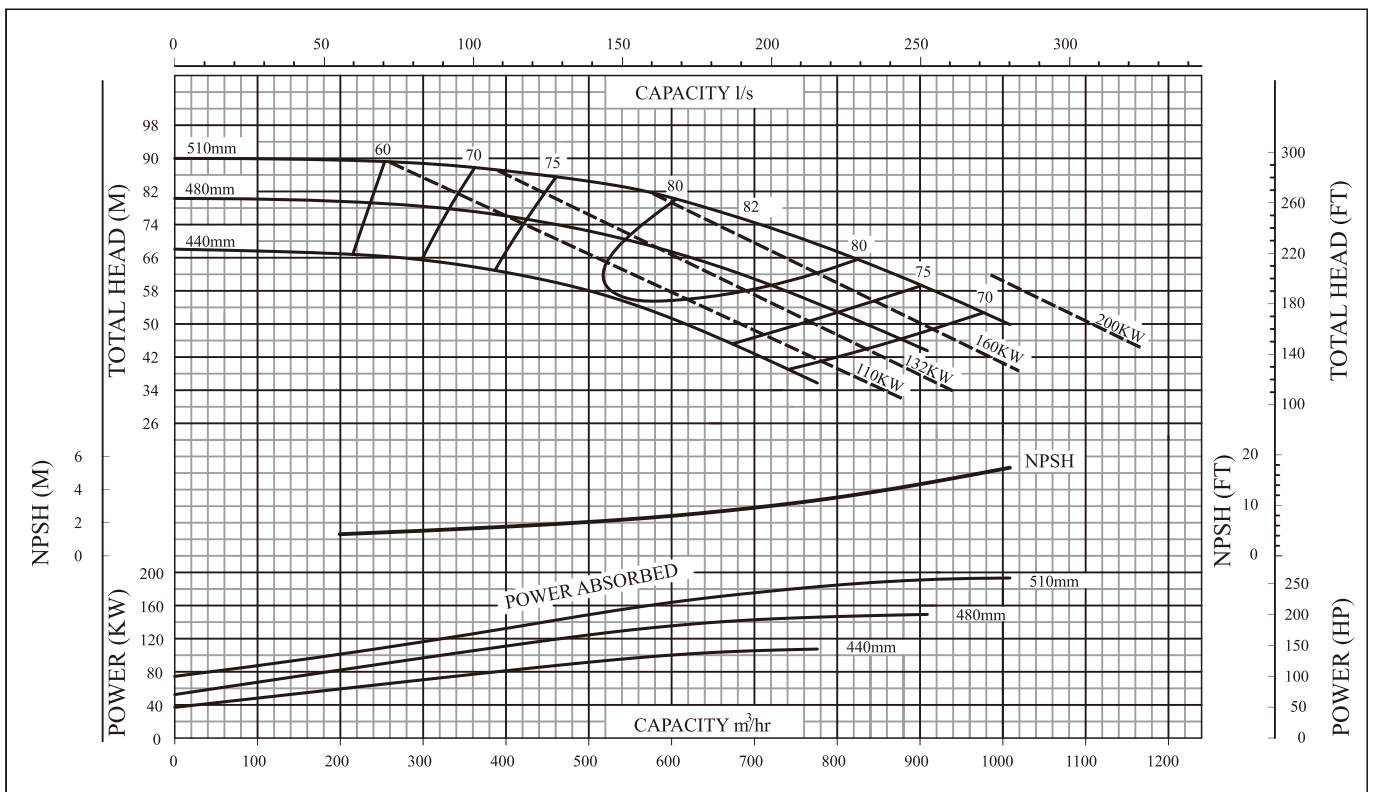
PERFORMANCE



PERFORMANCE

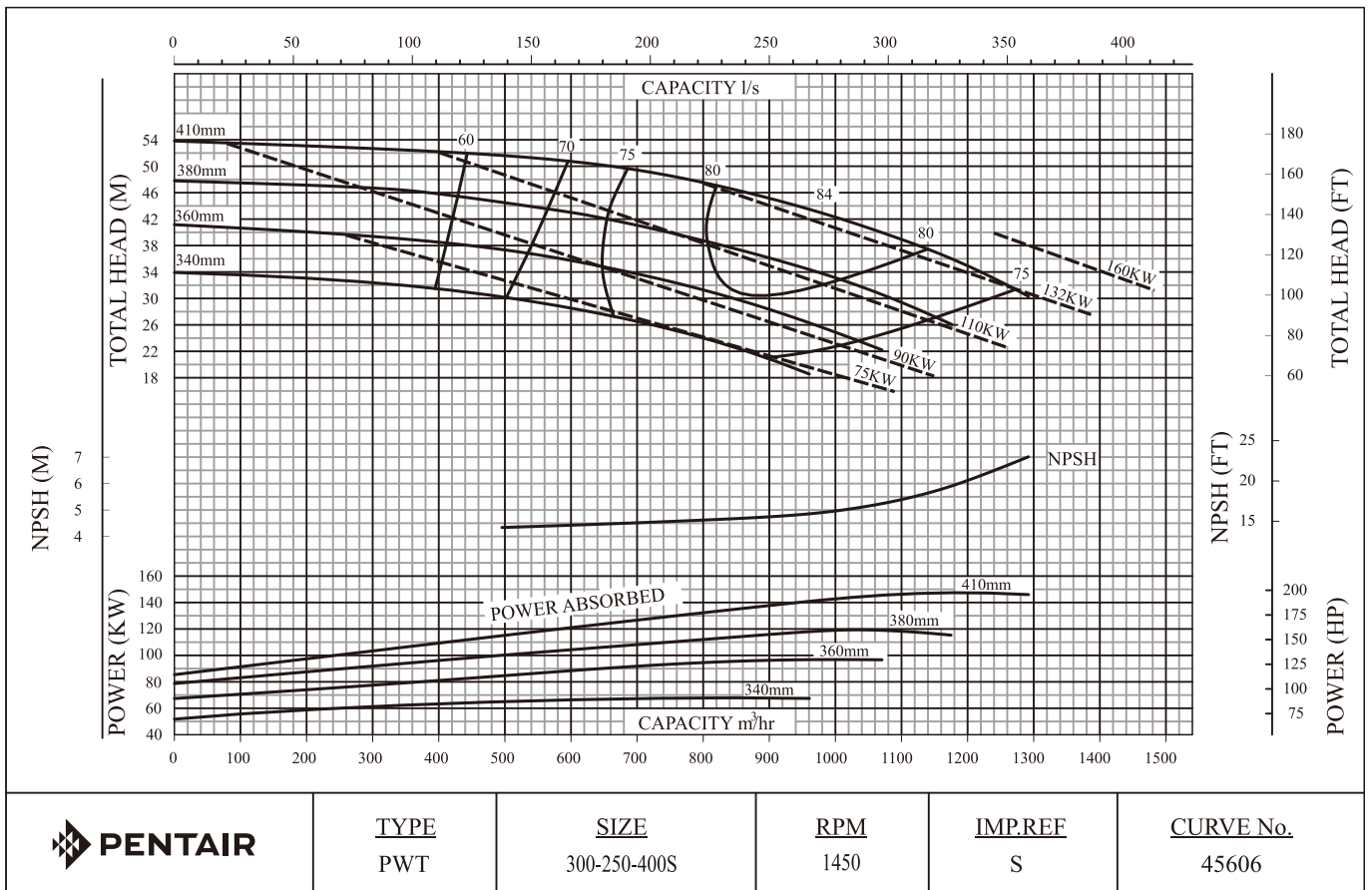
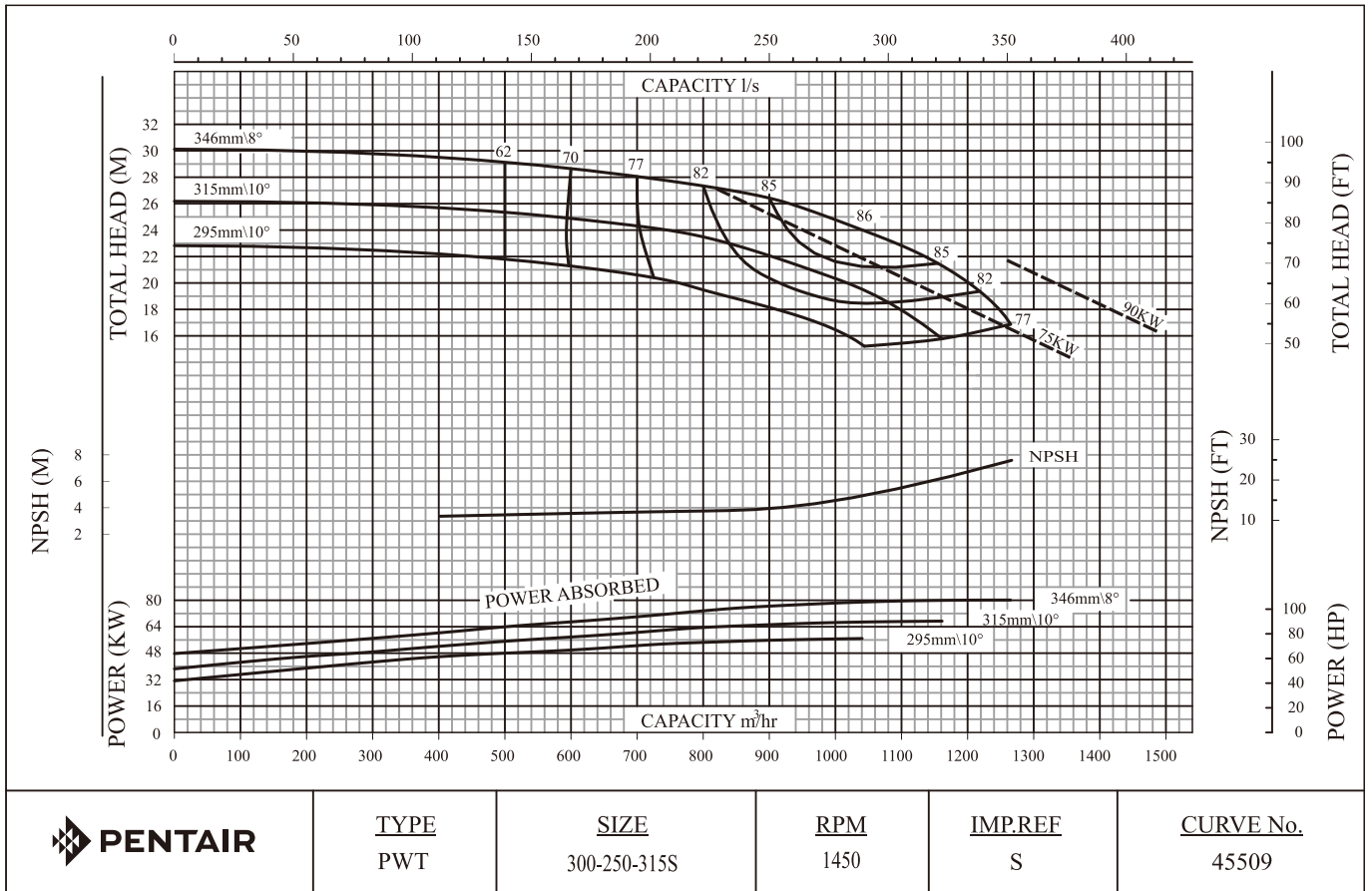


	<u>TYPE</u>	<u>SIZE</u>	<u>RPM</u>	<u>IMP.REF</u>	<u>CURVE No.</u>
	PWT	250-200-400S	1450	S	45605

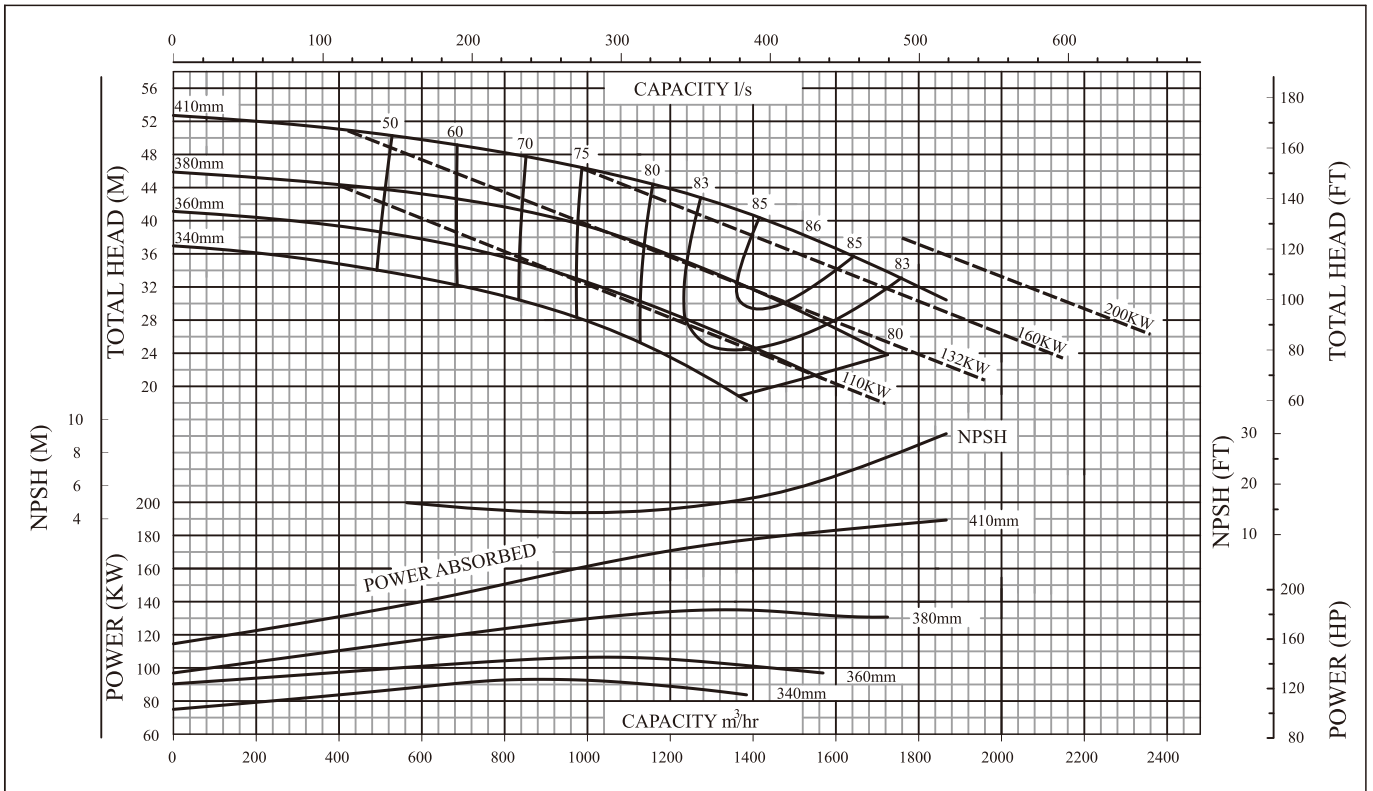


	<u>TYPE</u>	<u>SIZE</u>	<u>RPM</u>	<u>IMP.REF</u>	<u>CURVE No.</u>
	PWT	250-200-500S	1450	S	45702

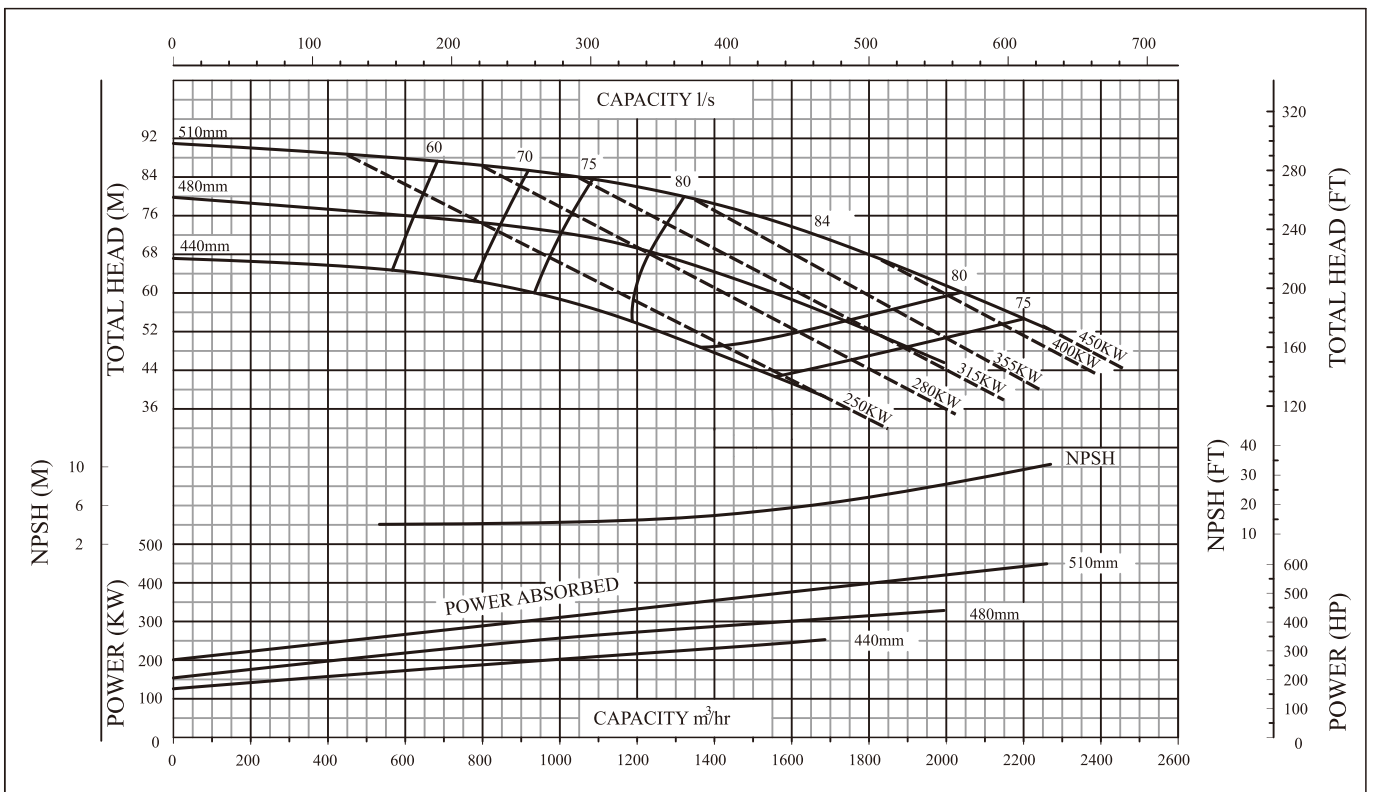
PERFORMANCE



PERFORMANCE

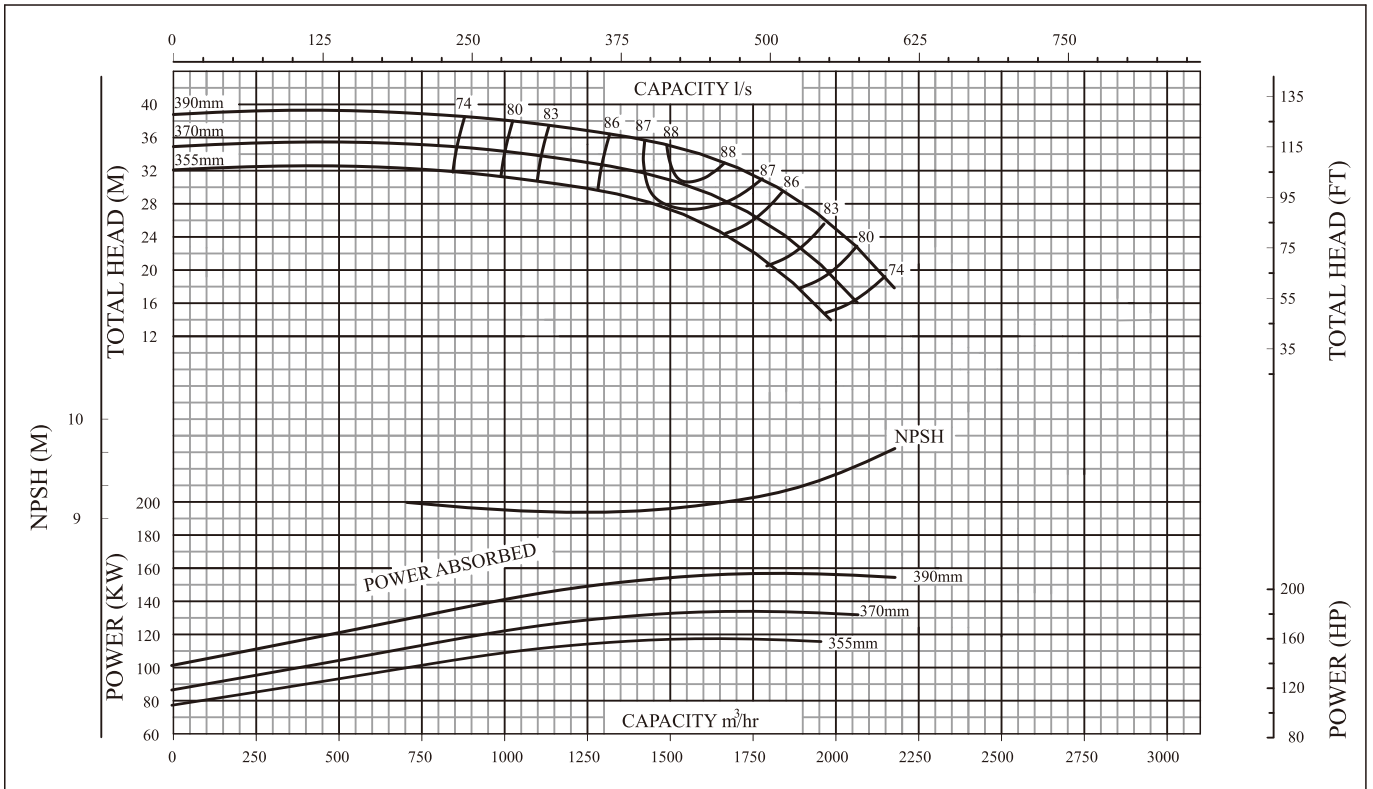


PENTAIR	<u>TYPE</u>	<u>SIZE</u>	<u>RPM</u>	<u>IMP.REF</u>	<u>CURVE No.</u>
	PWT	350-300-400S	1450	S	45607



PENTAIR	<u>TYPE</u>	<u>SIZE</u>	<u>RPM</u>	<u>IMP.REF</u>	<u>CURVE No.</u>
	PWT	350-300-500S	1450	S	45704

PERFORMANCE



	<u>TYPE</u>	<u>SIZE</u>	<u>RPM</u>	<u>IMP.REF</u>	<u>CURVE No.</u>
	PWT	350-300-315S	1450	S	45510



Head Office: 1-21 Monash Drive,
Dandenong South, VIC 3175

Manufacturing Plant/
Return Goods Facility: 268 Milperra Road,
Milperra, NSW, Australia 2214

National Customer Service: Phone :1300 137 344
Fax :1800 006 688

National Dealer Locator: Phone :1800 664 266

Email: PacificTPSSales@pentair.com
Web: pentair.com.au
southerncross.pentair.com.au

Information contained here-in remains the property of Pentair. Any reproduction, display, publication, modification or distribution is strictly prohibited without the prior written permission from Pentair.

Disclaimer: This product catalogue is accurate at the time of printing. Pentair reserves the right to change pricing, product specifications and product details. All product images are for reference purposes only and may not represent the actual and/or current product.

©2023 Pentair. All rights reserved.