

# PT SERIES

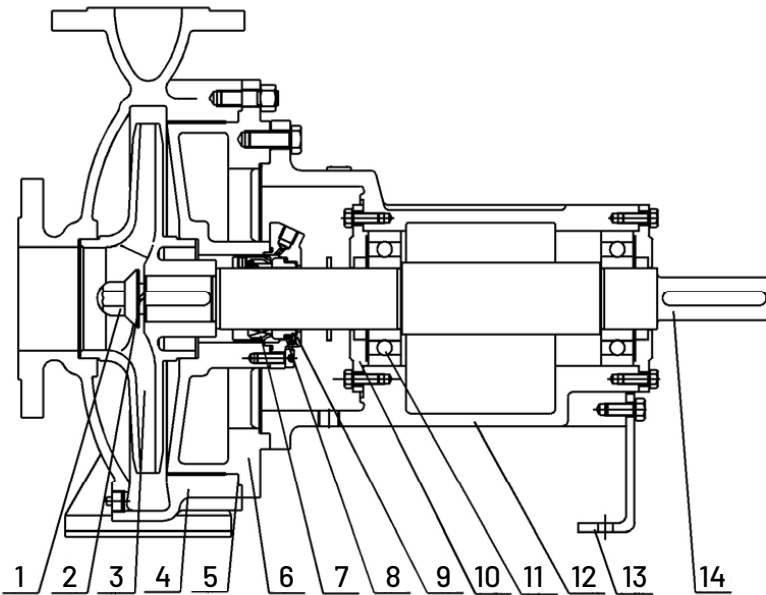
## END SUCTION PUMPS

The Pentair Southern Cross PT Series End-suction pumps are your ideal solution for pressure boosting, liquid transfer, agricultural irrigation and industrial applications.



- ✓ **EXTENDED FLOW RANGE**
- ✓ **CAST IRON CASING WITH 316SS IMPELLER**
- ✓ **GREASE LUBRICATED BEARINGS**
- ✓ **ALL PUMPS PERFORMANCE TESTED PRIOR TO DISPATCH**

## SPECIFICATION SHEET



1	Impeller Nuts	8	Mech Seal Gland O'ring
2	Impeller Nut Gasket	9	Mechanical Seal Gland
3	Impeller	10	Bearing Gland
4	Pump Casing	11	Bearing
5	Gasket	12	Bearing Bracket
6	Pump Cover	13	Support Foot
7	Mechanical Seal	14	Shaft

### MATERIAL OF CONSTRUCTION:

The PT Pumps are offered with AS1830/T260 Cast Iron Volutes and back cover and 316SS impeller.

### FLANGE:

PT Pumps come standard with AS2129 Table E Flanges to allow for easy adaptability in the Australian market

### BEARINGS:

Packed for life grease lubricated bearings\*

### TESTED:

All PT pumps are Performance tested to ISO9906 and hydrostatic tested to ensure the pump you purchase has performed in accordance with the published data to ensure reliable trouble-free operation.

### BACK PULL OUT DESIGN:

Allows for simple removal of rotating element without disturbing the pipework, making it easier for servicing.

### SUPERIOR HYDRAULIC DESIGN:

The Pentair PT pump has been designed with the latest CFC modeling to ensure the best pump performance and highest efficiency.

### FLUSH KIT:

PT Pumps as standard come with a re-circulation flush that supplies high pressure water into the stuffing box area to prevent the buildup of solids around the seal face to ensure long mechanical seal life.

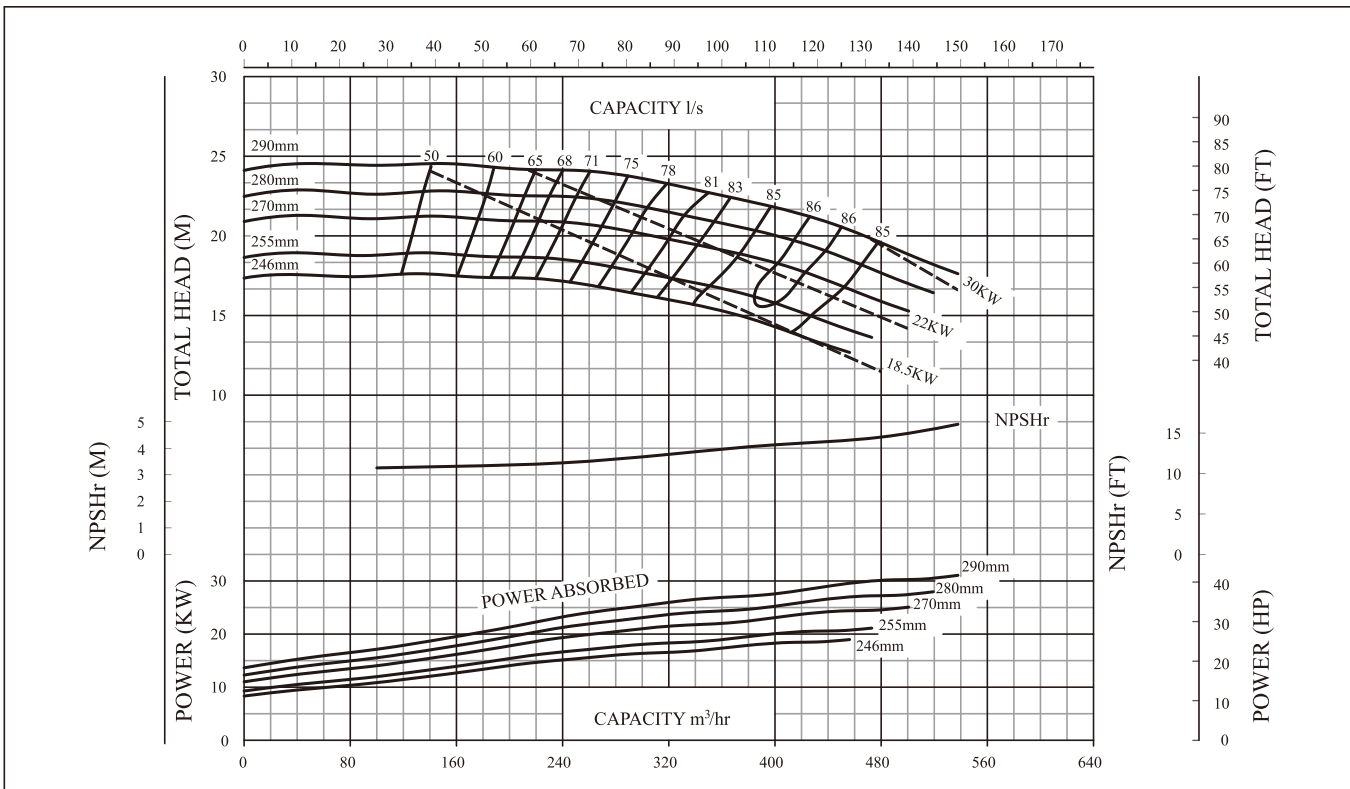
### BALANCING:

Impellers are dynamically balanced to G6.3 ISO1940-1 standard.

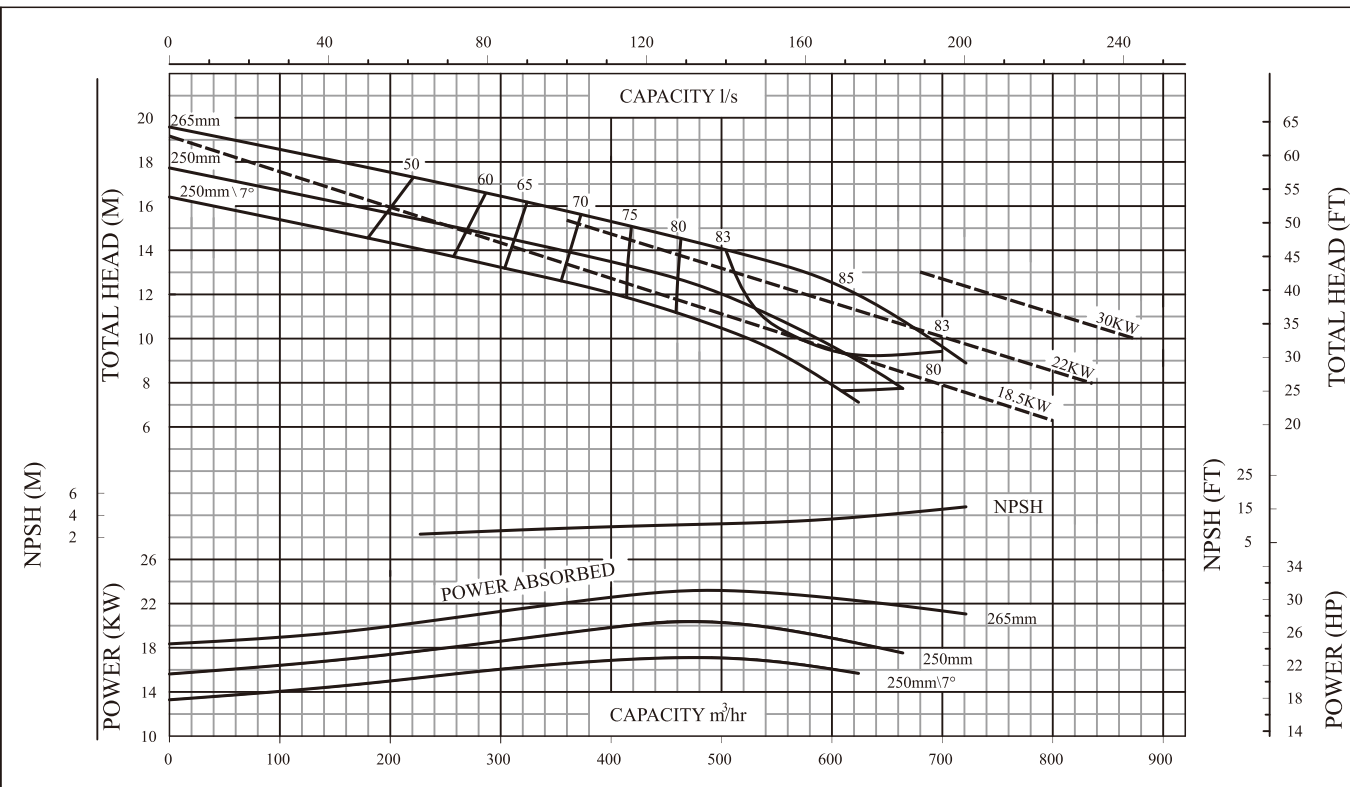
*\*Exceptions apply*

PART NUMBER	DESCRIPTION	MAX IMPELLER SIZE	MAX SPEED (RPM)	MAX WORKING PRESSURE
PTGH3J	PUMP PENTAIR 200X150-250 J	290	1750	16bar
PTGW4J	PUMP PENTAIR 200X200-250 J	265	1500	16bar
PTHK5J	PUMP PENTAIR 300X250-315 J	347	1500	16bar
PTHL5J	PUMP PENTAIR 350X300-315 J	395	1500	16bar
PTJJ4J	PUMP PENTAIR 250X200-400 J	408	1500	16bar
PTJK5J	PUMP PENTAIR 300X250-400 J	409	1500	16bar
PTJL5J	PUMP PENTAIR 350X300-400 J	406	1500	16bar
PTKJ5J	PUMP PENTAIR 250X200-500 J	519	1500	16bar
PTKL6J	PUMP PENTAIR 350X300-500 J	519	1500	16bar

# PERFORMANCE

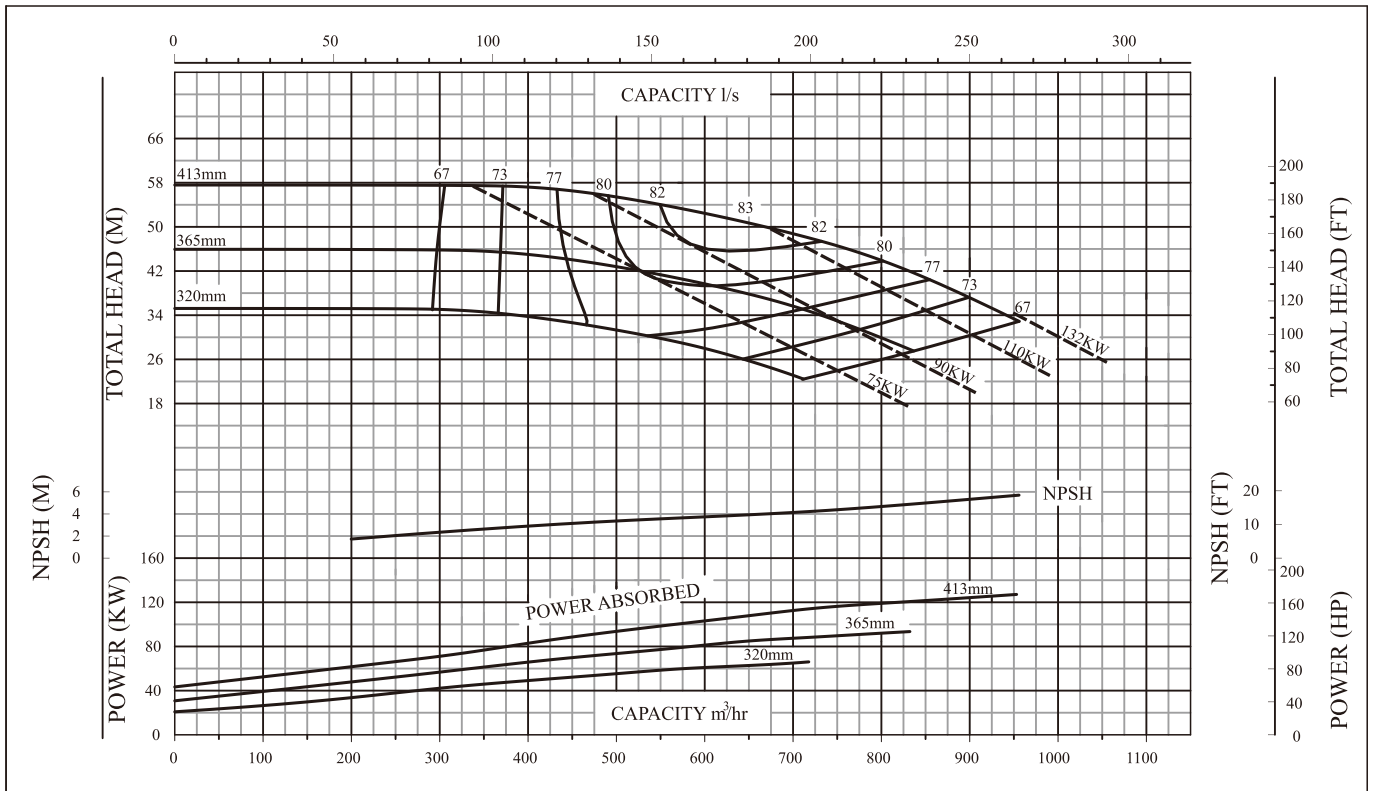


<b>PENTAIR</b>	<u>TYPE</u>	<u>SIZE</u>	<u>RPM</u>	<u>IMP.REF</u>	<u>CURVE No.</u>
	PWT	200-150-250S	1450	S	45407

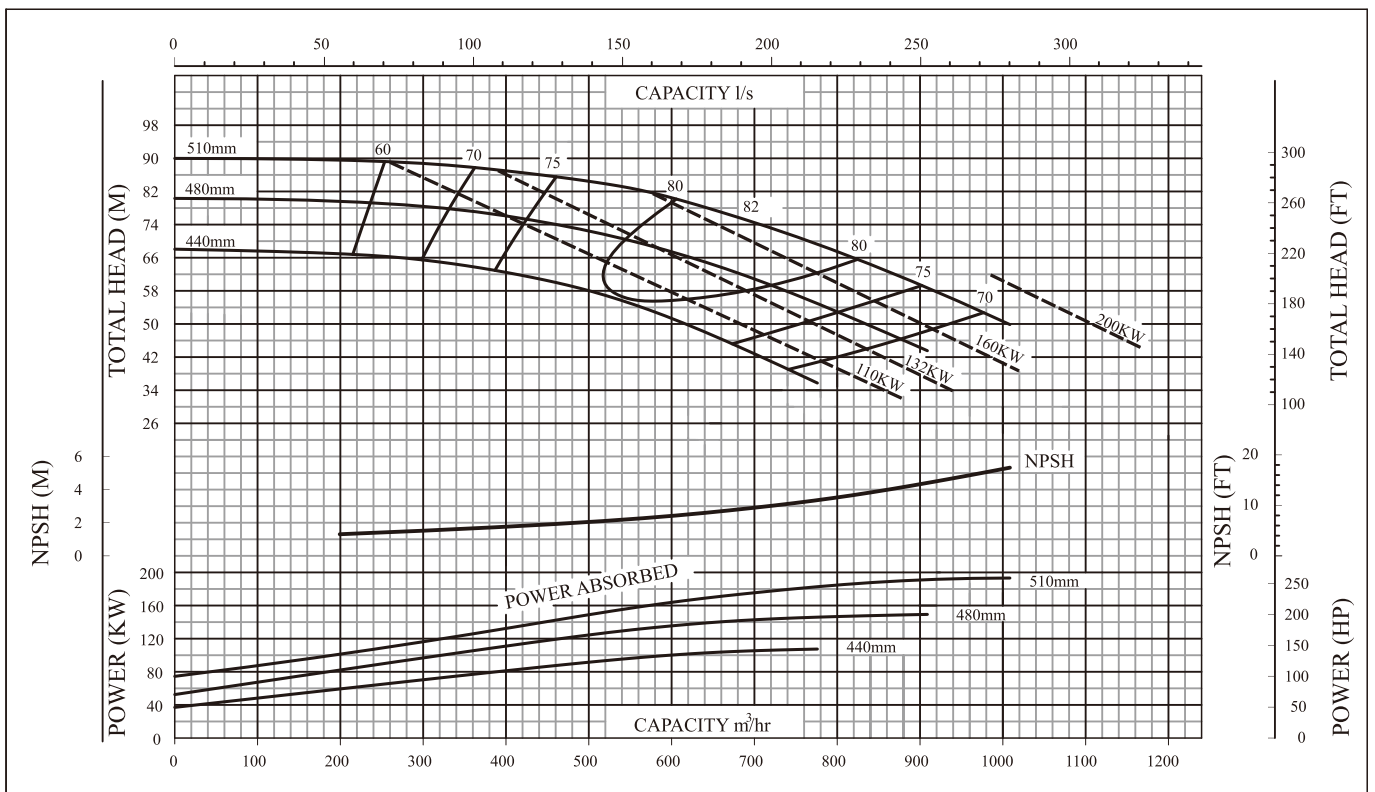


<b>PENTAIR</b>	<u>TYPE</u>	<u>SIZE</u>	<u>RPM</u>	<u>IMP.REF</u>	<u>CURVE No.</u>
	PWT	200-200-250S	1450	S	45408

# PERFORMANCE

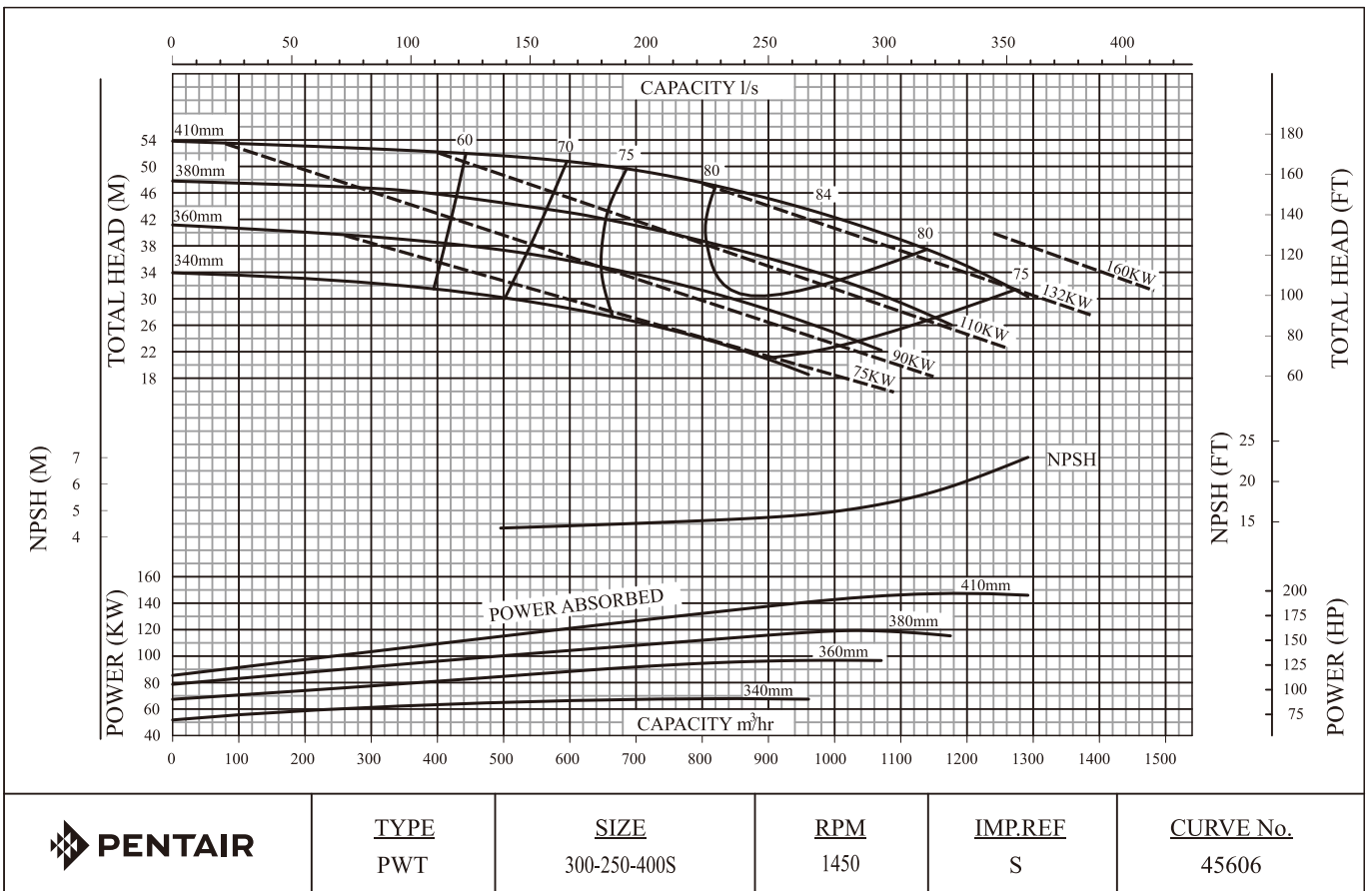
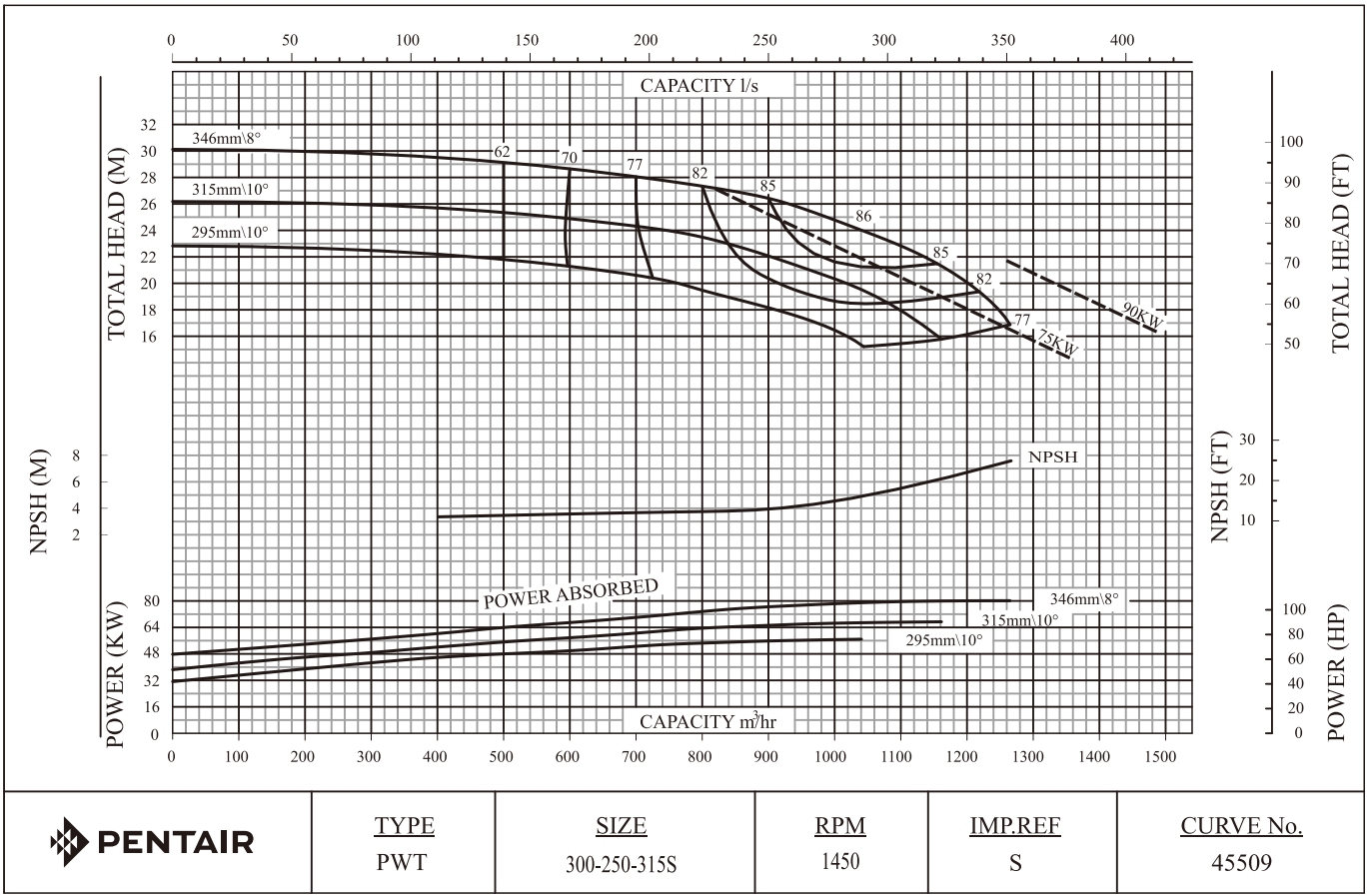


<b>PENTAIR</b>	<u>TYPE</u>	<u>SIZE</u>	<u>RPM</u>	<u>IMP.REF</u>	<u>CURVE No.</u>
	PWT	250-200-400S	1450	S	45605

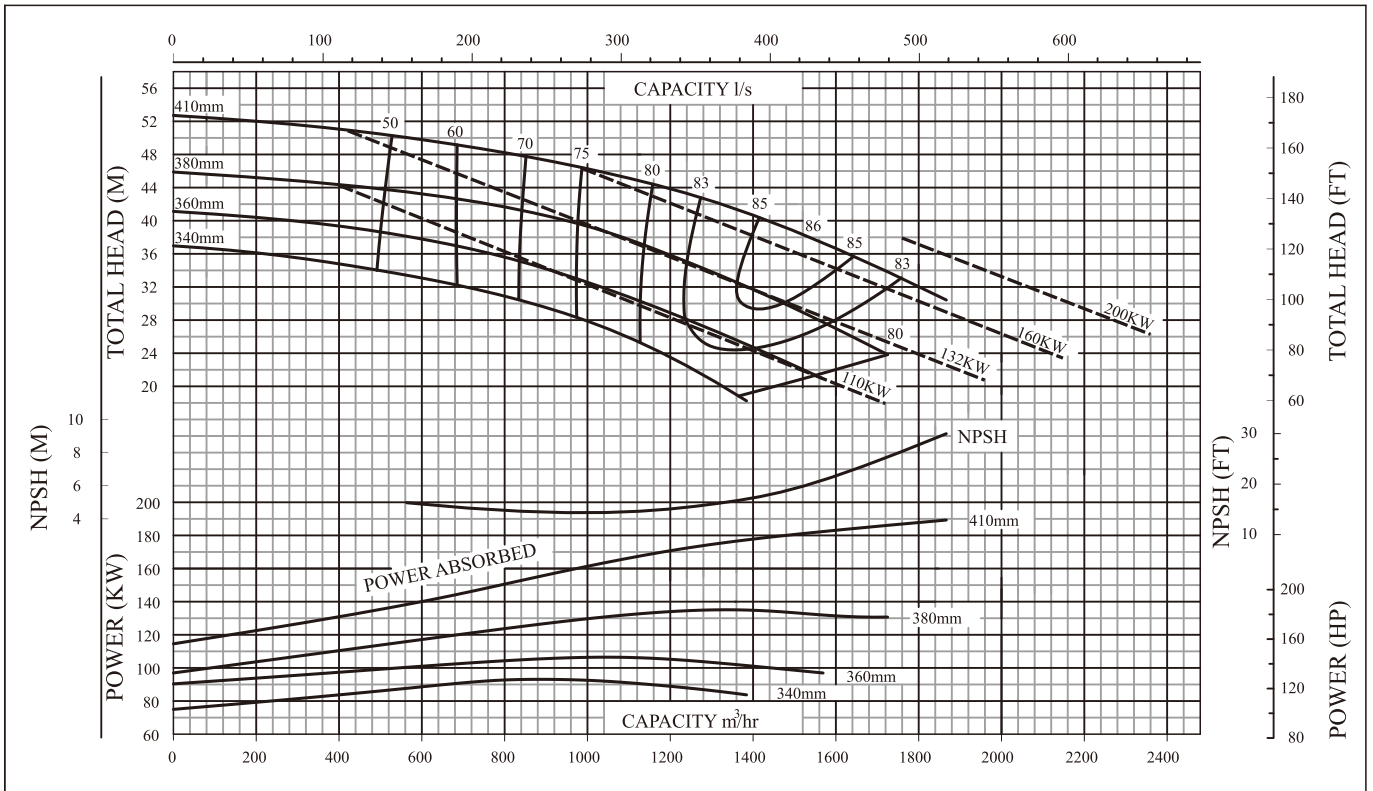


<b>PENTAIR</b>	<u>TYPE</u>	<u>SIZE</u>	<u>RPM</u>	<u>IMP.REF</u>	<u>CURVE No.</u>
	PWT	250-200-500S	1450	S	45702

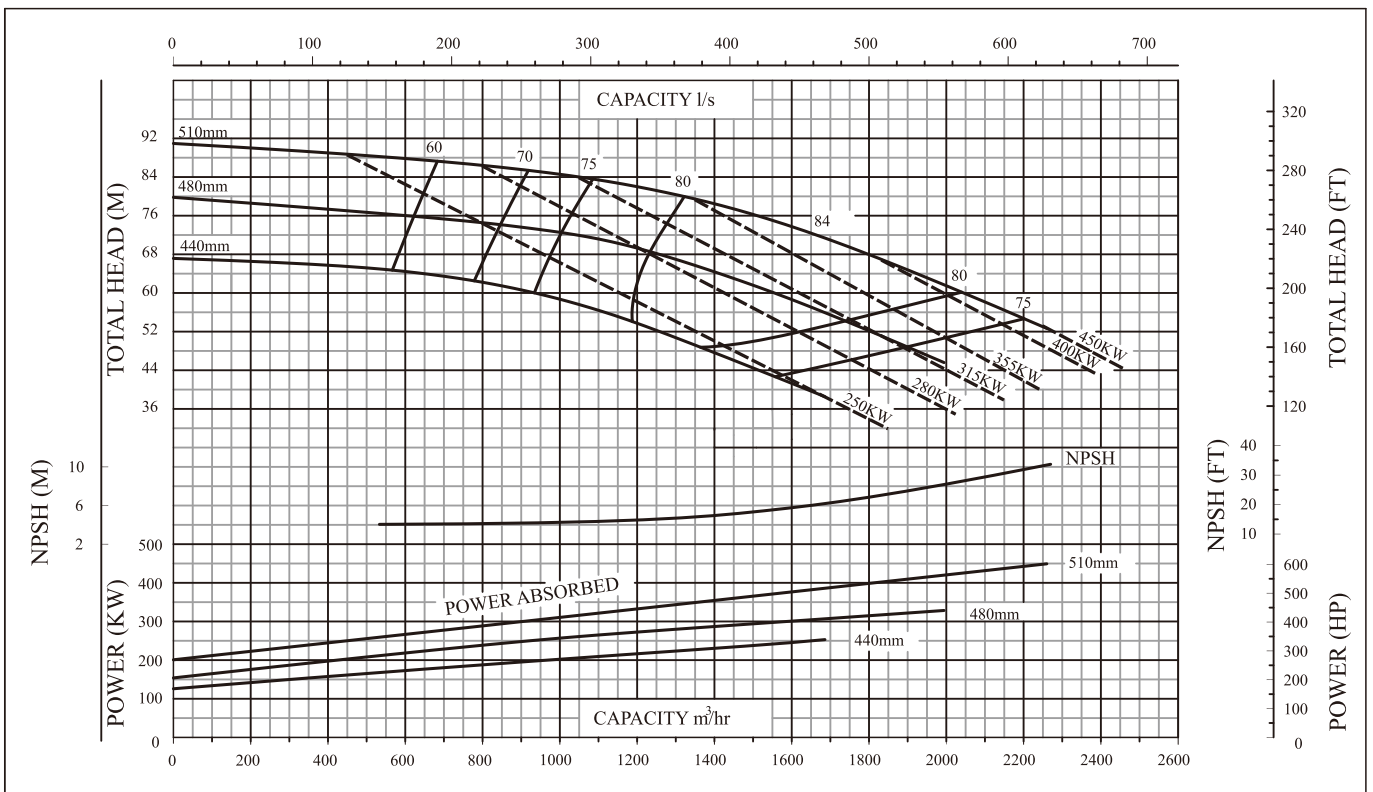
# PERFORMANCE



# PERFORMANCE

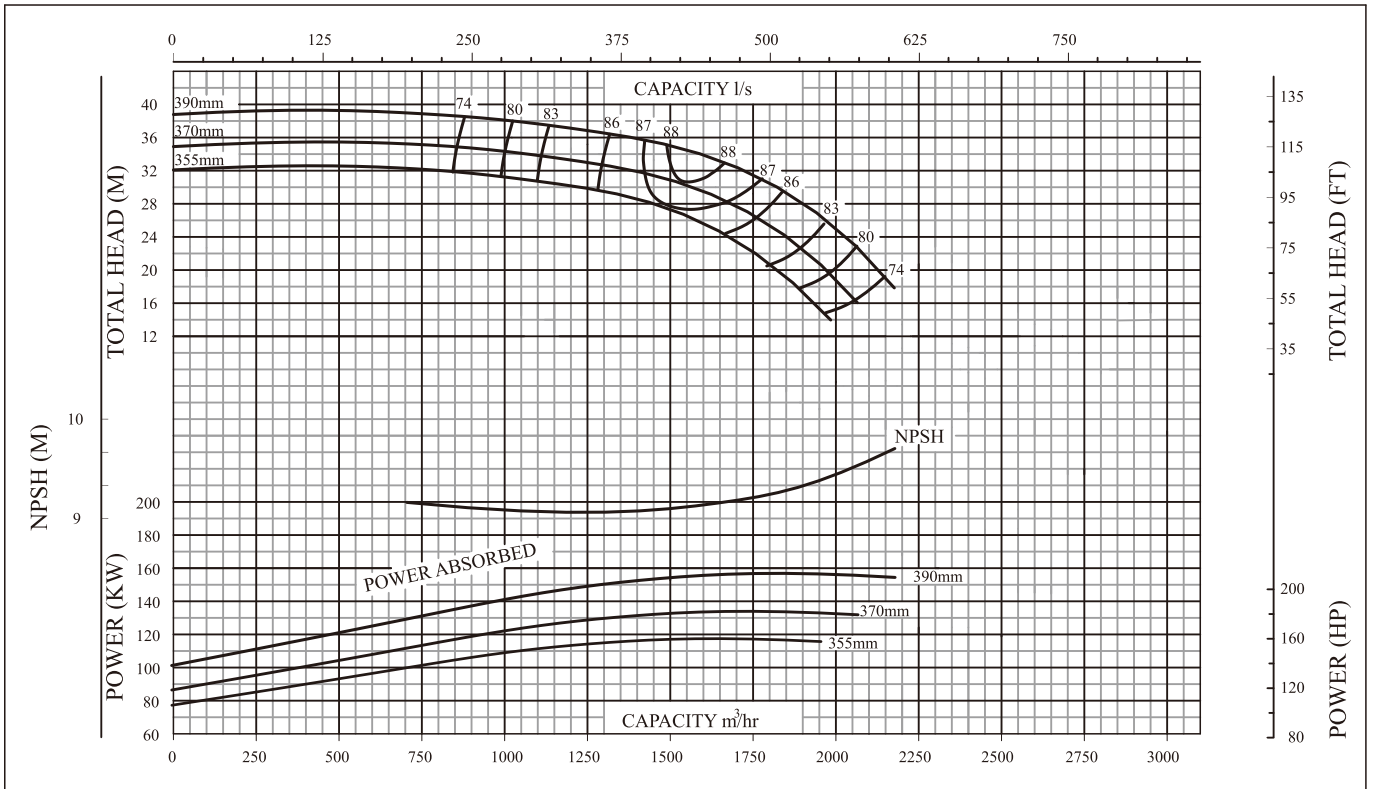


<b>PENTAIR</b>	<u>TYPE</u>	<u>SIZE</u>	<u>RPM</u>	<u>IMP.REF</u>	<u>CURVE No.</u>
	PWT	350-300-400S	1450	S	45607



<b>PENTAIR</b>	<u>TYPE</u>	<u>SIZE</u>	<u>RPM</u>	<u>IMP.REF</u>	<u>CURVE No.</u>
	PWT	350-300-500S	1450	S	45704

# PERFORMANCE



TYPE  
PWT

SIZE  
350-300-315S

RPM  
1450

IMP.REF  
S

CURVE No.  
45510



Head Office: 1-21 Monash Drive,  
Dandenong South, VIC 3175

Manufacturing Plant/  
Return Goods Facility: 268 Milperra Road,  
Milperra, NSW, Australia 2214

National Customer Service: Phone :1300 137 344  
Fax :1800 006 688

National Dealer Locator: Phone :1800 664 266

Email: PacificTPSSales@pentair.com  
Web: pentair.com.au  
southerncross.pentair.com.au

Information contained here-in remains the property of Pentair. Any reproduction, display, publication, modification or distribution is strictly prohibited without the prior written permission from Pentair.

Disclaimer: This product catalogue is accurate at the time of printing. Pentair reserves the right to change pricing, product specifications and product details. All product images are for reference purposes only and may not represent the actual and/or current product.

©2023 Pentair. All rights reserved.