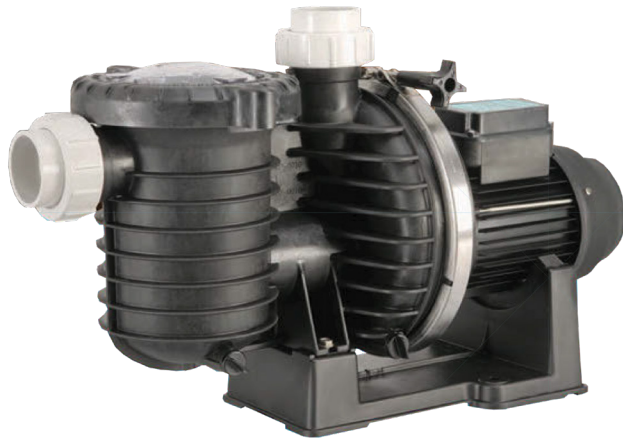


SEABASS®

STRONG PERFORMER, QUITE LEADER



FEATURES

- The ultimate aquaculture pump
- The SeaBass range of pumps will reduce overall costs through efficiency and reliability
- Salt water mechanical seal reduces the risk of seal failure and leaks
- Stainless steel shaft for corrosion protection
- Triple epoxy coated motor provides external corrosion protection
- Continuously rated motor
- Tall pump stand protects your pump from corrosive standing water

Nothing but the best

Pentair's reputation for top-of-the-line equipment is unparalleled in the industry. Every feature of the SeaBass has been engineering the answer to the needs of today's aquaculture industry. High efficiency, low maintenance and reliability. The SeaBass nails it on all counts.

Easy maintenance

When cleaning is required, as easy twist of the wrist gives you access to the ultra-sized strainer basket. Simply empty the basket, re-attach the Quick-Lock™ trap lid and twist is one click to the right. Also, a quick release clamp detaches the motor/pump assembly from the pump casing, giving easy access for cleaning and maintenance.

Quite heavy duty motor

Reliable and quality are integral benefits of this continuous rated motor. A specially designed sound-dampening base make the SeaBass extremely quiet. Low noise levels result in peaceful pump operation.

Precision-fit internal components

The SeaBass has been designed with efficiency and performance in mind. An engineered low friction Teflon wear ring ensures a long high performance life.

Built for the long-run

Only the finest materials are used to build lasting quality into every SeaBass. On the outside, Pentair's exclusive Dura-Glas™ composite, the shaft and seal are constructed with 316 stainless steel and the impeller is made with Noryl® to stand tough against harsh chemicals.

50mm barrel unions

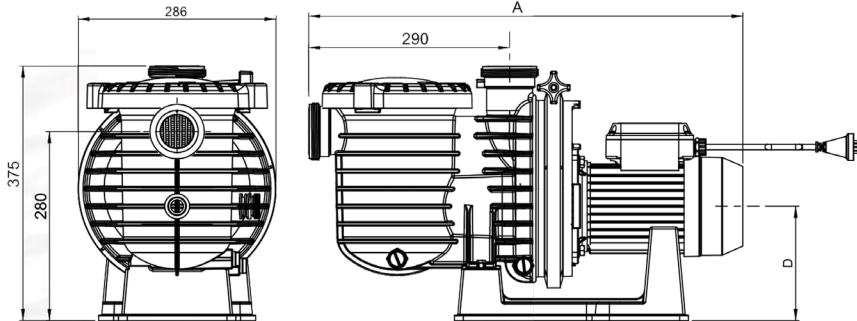
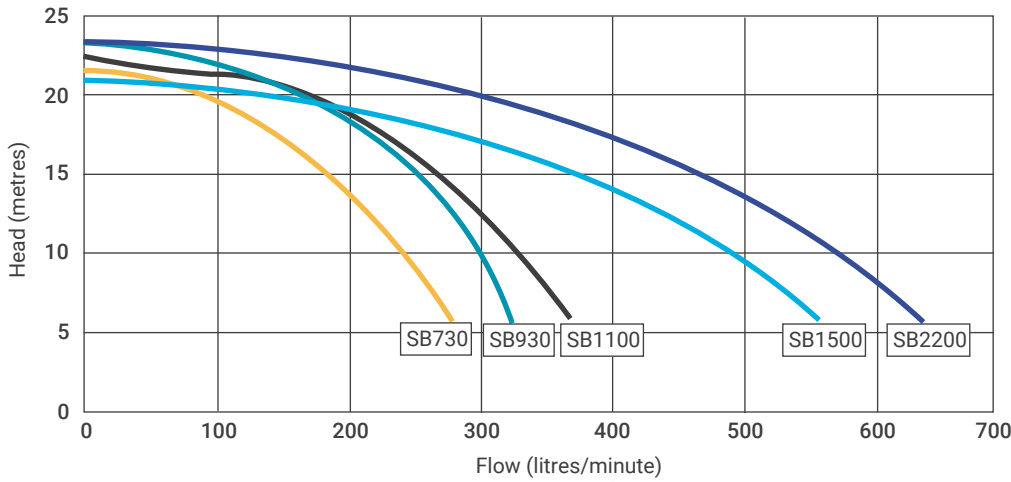
Quick and easy to install, creating a perfect seal while allowing pump removal without flexing pipework.

Electrical approvals

Rest easy knowing your SeaBass pump is designed to Australian Standards.

SEABASS - Technical Data

PERFORMANCE CURVE



DIMENSIONS

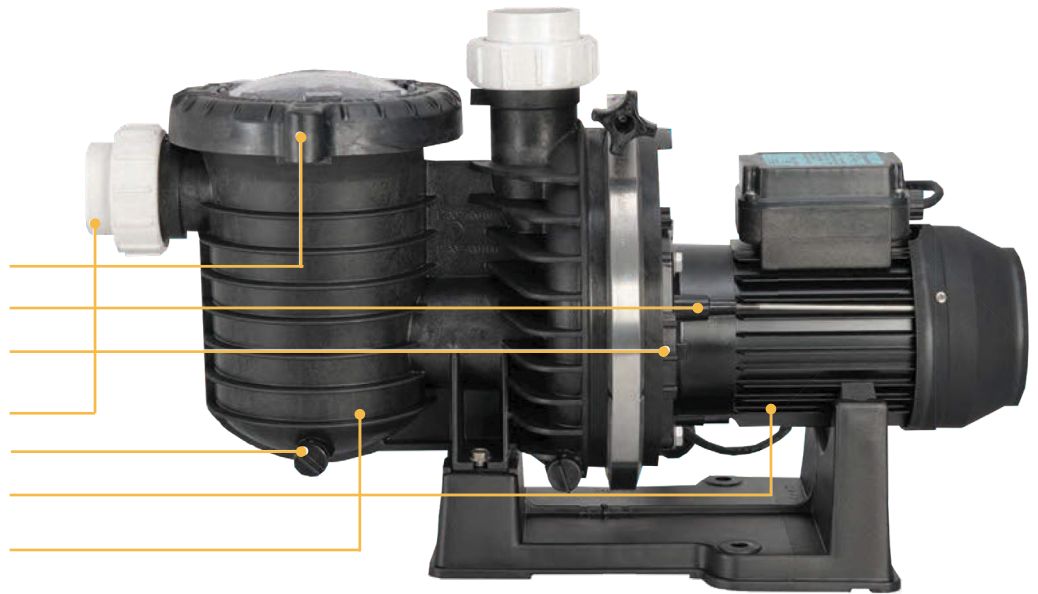
Pump Model	SB730100	SB930100	SB1100100	SB1108100	SB1500100	SB1508100	SB2200100	SB2208100
A (mm)	629	650	650	696	690	721	694	721
D (mm)	165	171	171	187	171	187	181	187

MODEL DATA

Pump model	Input (P1)	Output (P2)	Supply voltage	Phase	Full load Current (A)	Locked rotor Current (A)	Capacitor μ fd	Supply cord Length (m)	Net weight (kg)	Packed weight (kg)	Carton dimensions (L x W x H)
SB730100	925	690	230	1	4.1	14	25	2	14.5	16.5	725 x 325 x 390
SB930100	1160	870	230	1	5.4	22	25	2	17.5	19.5	725 x 325 x 390
SB1100100	1330	1000	230	1	6.0	22	25	2	17.5	19.5	725 x 325 x 390
SB1108100	125	1000	400	3	2.7	23	-	-	26	28	725 x 325 x 390
SB1500100	1800	1350	230	1	7.9	28	35	2	20.5	22.5	725 x 325 x 390
SB1508100	1750	1350	400	3	3.0	23	-	-	26	28	725 x 325 x 390
SB2200100	2435	1950	230	1	10.7	42	2x25	2	25.5	27.5	725 x 325 x 390
SB2208100	2420	1980	400	3	4.4	38	-	-	28	30	725 x 325 x 390

SEABASS - Technical Data

- Quick-lock, '1/4 turn', see through lid
- 316 stainless steel motor shaft
- Mechanical seal with 316 stainless steel spring and carbon ceramic faces
- 50mm quick-connect barrel unions
- Extra large capacity trap
- Elevated, sound dampening motor base
- Exclusive Dura-Glas™ composite resin



OPERATING CONDITIONS

Fluid:	Water
Maximum working pressure:	360 kPa
Water temp range:	5°C - 40°C
Ambient temperature:	55°C Maximum

Suitable for pumping fresh or salt water (up to 35000 ppm)

MOTOR

Type:	TEFC 2 pole continuously rated
Nominal speed:	2900 rpm
IP rating:	IP55
Insulation class:	Class F
Thermal overload:	Internal, auto reset
Frequency:	50Hz
Voltage:	230-240V Single phase 400-415V 3 phase
Bearing type:	Deep groove ball bearing (with double contact lip seal)

MATERIALS

Component	30% Glass filled polypropylene
Pump casing	NORYL
Diffuser	40% TF polypropylene
Seal plate	40% Glass filled propylene
Drain plug	Polypropylene
Shaft sleeve	NORYL
Motor shaft	316 Stainless steel
End shield	Powder coated aluminum
Hair & lint pot O-ring	Teflon impregnated nitrile
Hair & lint pot lid	Polycarbonate
Casting O-ring	Nitrile
Barrel union O-ring	Nitrile
Barrel union	ABS

