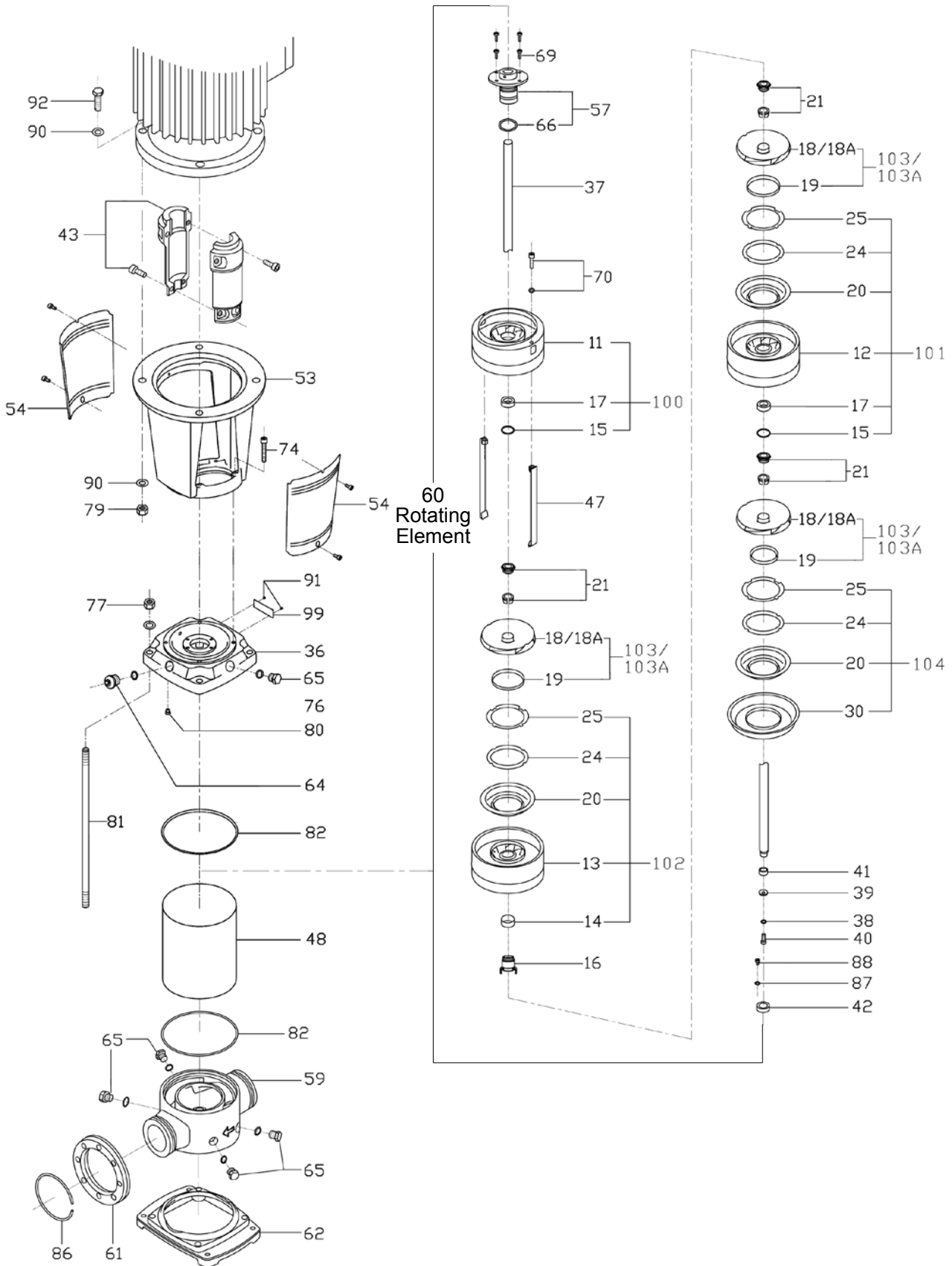




CENTRIFUGAL PUMPS

SBI(N)-32





CENTRIFUGAL PUMPS

SBI(N)-32

ILLUS. NO.	NO. PER UNIT	SBI PART NO.	SBN PART NO.	DESCRIPTION
11	1	SBI3241100	SBN3261100	Upper Diffuser
12	as reqd.	SBI3241200	SBN3261200	Diffuser
13	as reqd.	SBI3241300	SBN3261300	Diffuser with Bearing
14	as reqd.	SBI3241400	SBN3261400	Middle bearing
15	as reqd.	SBI3261500		Bearing fixed ring
16	1	SBI3261600		Bearing Sleeve
17	as reqd.	SBI3241700		Bearing
18	as reqd.	SBI3241800	SBN3261800	Impeller
18A	as reqd.	SBI32418000A	SBN32618000A	Impeller
19	1	SBI3241900	SBN3261900	bush
20	1	SBI3242000	SBN3262000	Neck ring base
21	as reqd.	SBI3242100	SBN3262100	Split Cone & Split Cone Nut
24	as reqd.	SBI3292400		Neck ring
25	as reqd.	SBI3242500	SBN3262500	Neck ring retainer
30	1	SBI3243000	SBN3263000	Strap Retainer
36	1	SBI3243600	SBN3263600	Pump Top Cap
37	1	SEE PUMP SHAFT SELECTION CHART		Pump shaft
38	1	SBI3263800		Spring Washer
39	1	SBI3293900	SBN3263900	Clamp Washer
40	1	SBI3294000	SBN3264000	Hexagon Socket Head Screw
41	1	SBI3294100		Bearing Internal Sleeve
42	1	SBI3294200		Bearing Outer Sleeve
43	1	SBI3294300A0		Coupling Assembly (Ψ24) 1.5-2.2kW
	1	SBI3294300B0		Coupling Assembly (Ψ28) 3-4kW
	1	SBI3294300C0		Coupling Assembly (Ψ38) 5.5-7.5kW
	1	SBI3294300D0		Coupling Assembly (Ψ42) 11-18.5kW
	1	SBI3294300E0		Coupling Assembly (Ψ48) 22kW
	1	SBI3294300F0		Coupling Assembly (Ψ55) 30kW
47	2	SEE STRAP SELECTION CHART		Strap
48	1	SEE PUMP CASING SELECTION CHART		Pump casing
53	1	SBI3295300A0		Motor stool (1.5-2.2kW)
	1	SBI3295300B0		Motor stool (3-4kW)
	1	SBI3295300C0		Motor stool (5.5-7.5kW)
	1	SBI3295300D0		Motor stool (11-18.5kW)
	1	SBI3295300E0		Motor stool (30kW)
54	1	SBI3245400A0		Coupling guard (1.1-7.5kW)
	1	SBI32445400B0		Coupling guard (11-30kW)
57	1	SBI3295700	SBN3265700	Mechanical Shaft Seal
59	1	SBI3245900	SBN3265900	Pump Base
60	1	SEE ROTATING ELEMENT SELECTION CHART		Rotating element
61	2	SBI3296100		Suction/Discharge Flange
62	1	SBI3266200		Base plate
64	1	SBI0196400	SBN0166400	Air vent screw & O-ring
65	5	SBI0196500	SBN0166500	Plug & O-ring
66	1	SBI3296600		O-ring
69	4	SBI3296900		Hexagon socket Head Screw
70	2	SBI3297000	SBN3267000	Hexagon Socket Head Screw & Washer



CENTRIFUGAL PUMPS

SBI(N)-32

ILLUS. NO.	NO. PER UNIT	SBI PART NO.	SBN PART NO.	DESCRIPTION
74	4	SBI3297400		Screw
77	4			Nut & Washer (M16)
79	4			Nut
80	4	SBI3298000E		Locating Buffer
81	4	SEE STAYBOLT SELECTION CHART		Staybolt
82	2	SBI3298200E		Casing O-ring
86	2	SBI3298600		Retaining Ring (304)
87	4	SBI3268700		Washer (316)
88	4	SBI3268800		Hexagon socket head screw (316)
90	4			Washer M16 - 11kW and up
92	4			Screw M8 - 1.5-4kW
	4			Screw M12 - 5.5-7.5kW
	4			Screw M16x55 - 11kW and up
100	1	SBI32-K0	SBN32-K0	Upper Diffuser Kit
101	as reqd.	SBI32-K1	SBN32-K1	Middle Diffuser Kit
102	as reqd.	SBI32-K2	SBN32-K2	Middle Diffuser with Bearing Kit
103	as reqd.	SBI32-K3	SBN32-K3	Impeller Kit
103A	as reqd.	SBI32-K3A	SBN32-K3A	Impeller Kit A
104	1	SBI32-K4	SBN32-K4	Neck Ring Base Kit

SHAFT SELECTION CHART

MODEL	SBI PART NO.	SBN PART NO.
SBI 32-1-1	SBI329370001-1	SBN326370001-1
SBI 32-1	SBI329370001	SBN326370001
SBI 32-2-2	SBI329370002-2	SBN326370002-2
SBI 32-2	SBI329370002	SBN326370002
SBI 32-3-2	SBI329370003-2	SBN326370003-2
SBI 32-3	SBI329370003	SBN326370003
SBI 32-4-2	SBI329370004-2	SBN326370004-2
SBI 32-4	SBI329370004	SBN326370004
SBI 32-5-2	SBI329370005-2	SBN326370005-2
SBI 32-5	SBI329370005	SBN326370005
SBI 32-6-2	SBI329370006-2	SBN326370006-2
SBI 32-6	SBI329370006	SBN326370006
SBI 32-7-2	SBI329370007-2	SBN326370007-2
SBI 32-7	SBI329370007	SBN326370007
SBI 32-8-2	SBI329370008-2	SBN326370008-2
SBI 32-8	SBI329370008	SBN326370008
SBI 32-9-2	SBI329370009-2	SBN326370009-2
SBI 32-9	SBI329370009	SBN326370009
SBI 32-10-2	SBI329370010-2	SBN326370010-2
SBI 32-10	SBI329370010	SBN326370010
SBI 32-11-2	SBI329370011-2	SBN326370011-2
SBI 32-11	SBI329370011	SBN326370011
SBI 32-12-2	SBI329370012-2	SBN326370012-2
SBI 32-12	SBI329370012	SBN326370012
SBI 32-13-2	SBI329370013-2	SBN326370013-2
SBI 32-13	SBI329370013	SBN326370013
SBI 32-14-2	SBI329370014-2	SBN326370014-2
SBI 32-14	SBI329370014	SBN326370014

STRAP SELECTION CHART

MODEL	SBI PART NO.	SBN PART NO.
SBI 32-1-1	SBI329470001-1	SBN326470001-1
SBI 32-1	SBI329470001	SBN326470001
SBI 32-2-2	SBI329470002-2	SBN326470002-2
SBI 32-2	SBI329470002	SBN326470002
SBI 32-3-2	SBI329470003-2	SBN326470003-2
SBI 32-3	SBI329470003	SBN326470003
SBI 32-4-2	SBI329470004-2	SBN326470004-2
SBI 32-4	SBI329470004	SBN326470004
SBI 32-5-2	SBI329470005-2	SBN326470005-2
SBI 32-5	SBI329470005	SBN326470005
SBI 32-6-2	SBI329470006-2	SBN326470006-2
SBI 32-6	SBI329470006	SBN326470006
SBI 32-7-2	SBI329470007-2	SBN326470007-2
SBI 32-7	SBI329470007	SBN326470007
SBI 32-8-2	SBI329470008-2	SBN326470008-2
SBI 32-8	SBI329470008	SBN326470008
SBI 32-9-2	SBI329470009-2	SBN326470009-2
SBI 32-9	SBI329470009	SBN326470009
SBI 32-10-2	SBI329470010-2	SBN326470010-2
SBI 32-10	SBI329470010	SBN326470010
SBI 32-11-2	SBI329470011-2	SBN326470011-2
SBI 32-11	SBI329470011	SBN326470011
SBI 32-12-2	SBI329470012-2	SBN326470012-2
SBI 32-12	SBI329470012	SBN326470012
SBI 32-13-2	SBI329470013-2	SBN326470013-2
SBI 32-13	SBI329470013	SBN326470013
SBI 32-14-2	SBI329470014-2	SBN326470014-2
SBI 32-14	SBI329470014	SBN326470014





CENTRIFUGAL PUMPS

SBI(N)-32

PUMP CASING SELECTION CHART

MODEL	SBI PART NO.	SBN PART NO.
SBI 32-1-1	SBI329480001-1	SBN326480001-1
SBI 32-1	SBI329480001	SBN326480001
SBI 32-2-2	SBI329480002-2	SBN326480002-2
SBI 32-2	SBI329480002	SBN326480002
SBI 32-3-2	SBI329480003-2	SBN326480003-2
SBI 32-3	SBI329480003	SBN326480003
SBI 32-4-2	SBI329480004-2	SBN326480004-2
SBI 32-4	SBI329480004	SBN326480004
SBI 32-5-2	SBI329480005-2	SBN326480005-2
SBI 32-5	SBI329480005	SBN326480005
SBI 32-6-2	SBI329480006-2	SBN326480006-2
SBI 32-6	SBI329480006	SBN326480006
SBI 32-7-2	SBI329480007-2	SBN326480007-2
SBI 32-7	SBI329480007	SBN326480007
SBI 32-8-2	SBI329480008-2	SBN326480008-2
SBI 32-8	SBI329480008	SBN326480008
SBI 32-9-2	SBI329480009-2	SBN326480009-2
SBI 32-9	SBI329480009	SBN326480009
SBI 32-10-2	SBI329480010-2	SBN326480010-2
SBI 32-10	SBI329480010	SBN326480010
SBI 32-11-2	SBI329480011-2	SBN326480011-2
SBI 32-11	SBI329480011	SBN326480011
SBI 32-12-2	SBI329480012-2	SBN326480012-2
SBI 32-12	SBI329480012	SBN326480012
SBI 32-13-2	SBI329480013-2	SBN326480013-2
SBI 32-13	SBI329480013	SBN326480013
SBI 32-14-2	SBI329480014-2	SBN326480014-2
SBI 32-14	SBI329480014	SBN326480014

ROTATING ELEMENT SELECTION CHART

MODEL	SBI PART NO.	SBN PART NO.
SBI 32-1-1	SBI32-01-1R	SBN32-01-1R
SBI 32-1	SBI32-01R	SBN32-01R
SBI 32-2-2	SBI32-02-2R	SBN32-02-2R
SBI 32-2	SBI32-02R	SBN32-02R
SBI 32-3-2	SBI32-03-2R	SBN32-03-2R
SBI 32-3	SBI32-03R	SBN32-03R
SBI 32-4-2	SBI32-04-2R	SBN32-04-2R
SBI 32-4	SBI32-04R	SBN32-04R
SBI 32-5-2	SBI32-05-2R	SBN32-05-2R
SBI 32-5	SBI32-05R	SBN32-05R
SBI 32-6-2	SBI32-06-2R	SBN32-06-2R
SBI 32-6	SBI32-06R	SBN32-06R
SBI 32-7-2	SBI32-07-2R	SBN32-07-2R
SBI 32-7	SBI32-07R	SBN32-07R
SBI 32-8-2	SBI32-08-2R	SBN32-08-2R
SBI 32-8	SBI32-08R	SBN32-08R
SBI 32-9-2	SBI32-09-2R	SBN32-09-2R
SBI 32-9	SBI32-09R	SBN32-09R
SBI 32-10-2	SBI32-10-2R	SBN32-10-2R
SBI 32-10	SBI32-10R	SBN32-10R
SBI 32-11-2	SBI32-11-2R	SBN32-11-2R
SBI 32-11	SBI32-11R	SBN32-11R
SBI 32-12-2	SBI32-12-2R	SBN32-12-2R
SBI 32-12	SBI32-12R	SBN32-12R
SBI 32-13-2	SBI32-13-2R	SBN32-13-2R
SBI 32-13	SBI32-13R	SBN32-13R
SBI 32-14-2	SBI32-14-2R	SBN32-14-2R
SBI 32-14	SBI32-14R	SBN32-14R

STAYBOLT SELECTION CHART

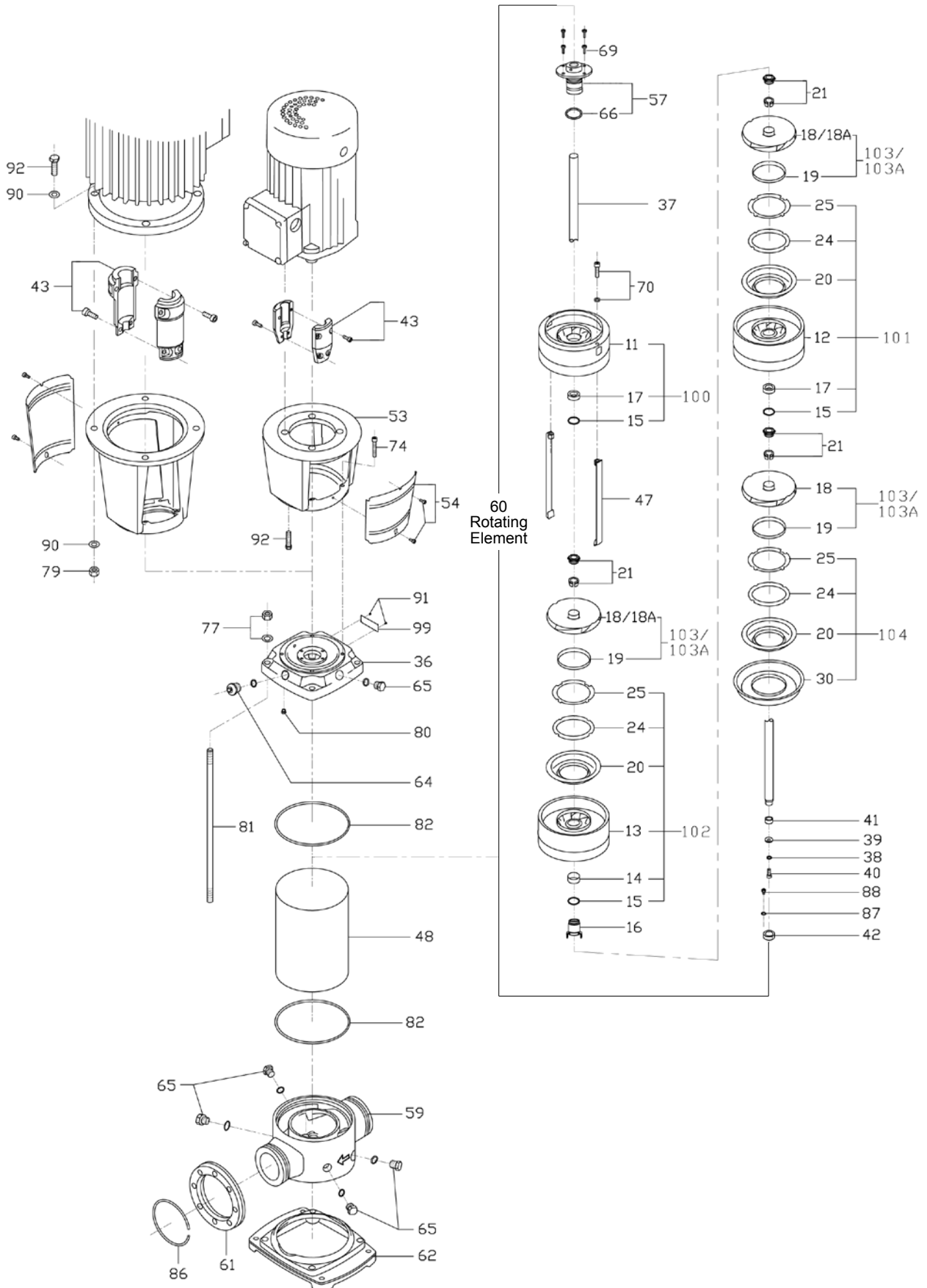
MODEL	SBI PART NO.	SBN PART NO.
SBI 32-1-1	SBI3244810001-1	SBI3244810001-1
SBI 32-1	SBI3244810001	SBI3244810001
SBI 32-2-2	SBI3244810002-2	SBI3244810002-2
SBI 32-2	SBI3244810002	SBI3244810002
SBI 32-3-2	SBI3244810003-2	SBI3244810003-2
SBI 32-3	SBI3244810003	SBI3244810003
SBI 32-4-2	SBI3244810004-2	SBI3244810004-2
SBI 32-4	SBI3244810004	SBI3244810004
SBI 32-5-2	SBI3244810005-2	SBI3244810005-2
SBI 32-5	SBI3244810005	SBI3244810005
SBI 32-6-2	SBI3244810006-2	SBI3244810006-2
SBI 32-6	SBI3244810006	SBI3244810006
SBI 32-7-2	SBI3244810007-2	SBI3244810007-2
SBI 32-7	SBI3244810007	SBI3244810007
SBI 32-8-2	SBI3244810008-2	SBI3244810008-2
SBI 32-8	SBI3244810008	SBI3244810008
SBI 32-9-2	SBI3244810009-2	SBI3244810009-2
SBI 32-9	SBI3244810009	SBI3244810009
SBI 32-10-2	SBI3244810010-2	SBI3244810010-2
SBI 32-10	SBI3244810010	SBI3244810010
SBI 32-11-2	SBI3244810011-2	SBI3244810011-2

MODEL	SBI PART NO.	SBN PART NO.
SBI 32-11	SBI32448100011	SBI32448100011
SBI 32-12-2	SBI32448100012-2	SBI32448100012-2
SBI 32-12	SBI32448100012	SBI32448100012
SBI 32-13-2	SBI32448100013-2	SBI32448100013-2
SBI 32-13	SBI32448100013	SBI32448100013
SBI 32-14-2	SBI32448100014-2	SBI32448100014-2
SBI 32-14	SBI32448100014	SBI32448100014



CENTRIFUGAL PUMPS

SBI(N)-45





CENTRIFUGAL PUMPS

SBI(N)-45

ILLUS. NO.	NO. PER UNIT	SBI PART NO.	SBN PART NO.	DESCRIPTION
11	1	SBI4541100	SBN4561100	Upper Diffuser
12	as reqd.	SBI4541200	SBN4561200	Diffuser
13	as reqd.	SBI4541300	SBN4561300	Diffuser with Bearing
14	as reqd.	SBI3241400	SBN3261400	Middle bearing
15	as reqd.		SBI3261500	Bearing fixed ring
16	1		SBI4561600	Bearing Sleeve
17	as reqd.		SBI3241700	Bearing
18	as reqd.	SBI4541800	SBN4561800	Impeller
18A	as reqd.	SBI45418000A	SBN45618000A	Impeller
19	1	SBI4541900	SBN4561900	bush
20	1	SBI4542000	SBN4562000	Neck ring base
21	as reqd.	SBI3242100	SBN3262100	Split Cone & Split Cone Nut
24	as reqd.		SBI4592400	Neck ring
25	as reqd.	SBI4542500	SBN4562500	Neck ring retainer
30	1	SBI4543000	SBN4563000	Strap Retainer
36	1	SBI4543600	SBN4563600	Pump Top Cap
37	1	SEE PUMP SHAFT SELECTION CHART		Pump shaft
38	1		SBI3263800	Spring Washer
39	1	SBI3293900	SBN3263900	Clamp Washer
40	1	SBI3294000	SBN3264000	Hexagon Socket Head Screw
41	1		SBI3294100	Bearing Internal Sleeve
42	1		SBI3294200	Bearing Outer Sleeve
43	1	SBI3294300B0		Coupling Assembly (Ψ28) 3-4kW
	1	SBI3294300C0		Coupling Assembly (Ψ38) 5.5-7.5kW
	1	SBI3294300D0		Coupling Assembly (Ψ42) 11-18.5kW
	1	SBI3294300E0		Coupling Assembly (Ψ48) 22kW
	1	SBI3294300F0		Coupling Assembly (Ψ55) 30-45kW
47	2	SEE STRAP SELECTION CHART		Strap
48	1	SEE PUMP CASING SELECTION CHART		Pump casing
53	1		SBI3295300B0	Motor stool (3-4kW)
	1		SBI3295300C0	Motor stool (5.5-7.5kW)
	1		SBI3295300D0	Motor stool (11-18.5kW)
	1		SBI3295300E0	Motor stool (30kW)
	1		SBI3295300F0	Motor stool (45kW)
54	1		SBI3245400A0	Coupling guard (1.5-7.5kW)
	1		SBI32445400B0	Coupling guard (11-30kW)
57	1	SBI3295700	SBN3265700	Mechanical Shaft Seal
59	1	SBI4545900	SBN4565900	Pump Base
60	1	SEE ROTATING ELEMENT SELECTION CHART		Rotating Element
61	2		SBI4596100	Suction/Discharge Flange
62	1		SBI4566200	Base plate
64	1	SBI0196400	SBN0166400	Air vent screw & O-ring
65	5	SBI0196500	SBN0166500	Plug & O-ring
66	1	SBI3296600E	SBN3266600V	O-ring
69	4		SBI3296900	Hexagon socket Head Screw
70	2	SBI3297000	SBN3267000	Hexagon Socket Head Screw & Washer



CENTRIFUGAL PUMPS

SBI(N)-45

ILLUS. NO.	NO. PER UNIT	SBI PART NO.	SBN PART NO.	DESCRIPTION
74	4		SBI3297400	Screw
77	4			Nut & Washer (M16)
79	4			Nut
80	4	SBI3298000E	SBN3298000V	Locating Buffer
81	4	SEE STAYBOLT SELECTION CHART		Staybolt
82	2	SBI4598200E	SBN4568200V	Casing "O" Ring
86	2		SBI4598600	Retaining ring
87	4		SBI3268700	Washer
88	4		SBI3268800	Hexagon Socket Head Screw
90	4			Washer M16 - 11kW and up
92	4			Screw M8 - 1.5-4kW
	4			Screw M12 - 5.5-7.5kW
	4			Screw M16x55 - 11kW and up
100	1	SBI45-K0	SBN45-K0	Upper Diffuser Kit
101	as reqd.	SBI45-K1	SBN45-K1	Middle Diffuser Kit
102	as reqd.	SBI45-K2	SBN45-K2	Middle Diffuser with Bearing Kit
103	as reqd.	SBI45-K3	SBN45-K3	Impeller Kit
103A	as reqd.	SBI45-K3A	SBN45-K3A	Impeller Kit A
104	1	SBI45-K4	SBN45-K4	Neck Ring Base Kit

SHAFT SELECTION CHART

MODEL	SBI PART NO.	SBN PART NO.
SBI 45-1-1	SBI459370001-1	SBN456370001-1
SBI 45-1	SBI459370001	SBN456370001
SBI 45-2-2	SBI459370002-2	SBN456370002-2
SBI 45-2	SBI459370002	SBN456370002
SBI 45-3-2	SBI459370003-2	SBN456370003-2
SBI 45-3	SBI459370003	SBN456370003
SBI 45-4-2	SBI459370002	SBN456370002
SBI 45-4	SBI459370004	SBN456370004
SBI 45-5-2	SBI459370005-2	SBN456370005-2
SBI 45-5	SBI459370005	SBN456370005
SBI 45-6-2	SBI459370006-2	SBN456370006-2
SBI 45-6	SBI459370006	SBN456370006
SBI 45-7-2	SBI459370007-2	SBN456370007-2
SBI 45-7	SBI459370007	SBN456370007
SBI 45-8-2	SBI459370008-2	SBN456370008-2
SBI 45-8	SBI459370008	SBN456370008
SBI 45-9-2	SBI459370009-2	SBN456370009-2
SBI 45-9	SBI459370009	SBN456370009
SBI 45-10-2	SBI4593700010-2	SBN4563700010-2
SBI 45-10	SBI4593700010	SBN4563700010
SBI 45-11-2	SBI4593700011-2	SBN4563700011-2
SBI 45-11	SBI4593700011	SBN4563700011
SBI 45-12-2	SBI4593700012-2	SBN4563700012-2
SBI 45-12	SBI4593700012	SBN4563700012
SBI 45-13-2	SBI4593700013-2	SBN4563700013-2

STRAP SELECTION CHART

MODEL	SBI PART NO.	SBN PART NO.
SBI 45-1-1	SBI459470001-1	SBN456470001-1
SBI 45-1	SBI459470001	SBN456470001
SBI 45-2-2	SBI459470002-2	SBN456470002-2
SBI 45-2	SBI459470002	SBN456470002
SBI 45-3-2	SBI459470003-2	SBN456470003-2
SBI 45-3	SBI459470003	SBN456470003
SBI 45-4-2	SBI459470002	SBN456470002
SBI 45-4	SBI459470004	SBN456470004
SBI 45-5-2	SBI459470005-2	SBN456470005-2
SBI 45-5	SBI459470005	SBN456470005
SBI 45-6-2	SBI459470006-2	SBN456470006-2
SBI 45-6	SBI459470006	SBN456470006
SBI 45-7-2	SBI459470007-2	SBN456470007-2
SBI 45-7	SBI459470007	SBN456470007
SBI 45-8-2	SBI459470008-2	SBN456470008-2
SBI 45-8	SBI459470008	SBN456470008
SBI 45-9-2	SBI459470009-2	SBN456470009-2
SBI 45-9	SBI459470009	SBN456470009
SBI 45-10-2	SBI4594700010-2	SBN4564700010-2
SBI 45-10	SBI4594700010	SBN4564700010
SBI 45-11-2	SBI4594700011-2	SBN4564700011-2
SBI 45-11	SBI4594700011	SBN4564700011
SBI 45-12-2	SBI4594700012-2	SBN4564700012-2
SBI 45-12	SBI4594700012	SBN4564700012
SBI 45-13-2	SBI4594700013-2	SBN4564700013-2





CENTRIFUGAL PUMPS

SBI(N)-45

PUMP CASING SELECTION CHART

MODEL	SBI PART NO.	SBN PART NO.
SBI 45-1-1	SBI459480001-1	SBN456480001-1
SBI 45-1	SBI459480001	SBN456480001
SBI 45-2-2	SBI459480002-2	SBN456480002-2
SBI 45-2	SBI459480002	SBN456480002
SBI 45-3-2	SBI459480003-2	SBN456480003-2
SBI 45-3	SBI459480003	SBN456480003
SBI 45-4-2	SBI459480002	SBN456480002
SBI 45-4	SBI459480004	SBN456480004
SBI 45-5-2	SBI459480005-2	SBN456480005-2
SBI 45-5	SBI459480005	SBN456480005
SBI 45-6-2	SBI459480006-2	SBN456480006-2
SBI 45-6	SBI459480006	SBN456480006
SBI 45-7-2	SBI459480007-2	SBN456480007-2
SBI 45-7	SBI459480007	SBN456480007
SBI 45-8-2	SBI459480008-2	SBN456480008-2
SBI 45-8	SBI459480008	SBN456480008
SBI 45-9-2	SBI459480009-2	SBN456480009-2
SBI 45-9	SBI459480009	SBN456480009
SBI 45-10-2	SBI459480010-2	SBN456480010-2
SBI 45-10	SBI459480010	SBN456480010
SBI 45-11-2	SBI459480011-2	SBN456480011-2
SBI 45-11	SBI459480011	SBN456480011
SBI 45-12-2	SBI459480012-2	SBN456480012-2
SBI 45-12	SBI459480012	SBN456480012
SBI 45-13-2	SBI459480013-2	SBN456480013-2

ROTATING ELEMENT SELECTION CHART

MODEL	SBI PART NO.	SBN PART NO.
SBI 45-1-1	SBI45-01-1R	SBN45-01-1R
SBI 45-1	SBI45-01R	SBN45-01R
SBI 45-2-2	SBI45-02-2R	SBN45-02-2R
SBI 45-2	SBI45-02R	SBN45-02R
SBI 45-3-2	SBI45-03-2R	SBN45-03-2R
SBI 45-3	SBI45-03R	SBN45-03R
SBI 45-4-2	SBI45-04-2R	SBN45-04-2R
SBI 45-4	SBI45-04R	SBN45-04R
SBI 45-5-2	SBI45-05-2R	SBN45-05-2R
SBI 45-5	SBI45-05R	SBN45-05R
SBI 45-6-2	SBI45-06-2R	SBN45-06-2R
SBI 45-6	SBI45-06R	SBN45-06R
SBI 45-7-2	SBI45-07-2R	SBN45-07-2R
SBI 45-7	SBI45-07R	SBN45-07R
SBI 45-8-2	SBI45-08-2R	SBN45-08-2R
SBI 45-8	SBI45-08R	SBN45-08R
SBI 45-9-2	SBI45-09-2R	SBN45-09-2R
SBI 45-9	SBI45-09R	SBN45-09R
SBI 45-10-2	SBI45-10-2R	SBN45-10-2R
SBI 45-10	SBI45-10R	SBN45-10R
SBI 45-11-2	SBI45-11-2R	SBN45-11-2R
SBI 45-11	SBI45-11R	SBN45-11R
SBI 45-12-2	SBI45-12-2R	SBN45-12-2R
SBI 45-12	SBI45-12R	SBN45-12R
SBI 45-13-2	SBI45-13-2R	SBN45-13-2R

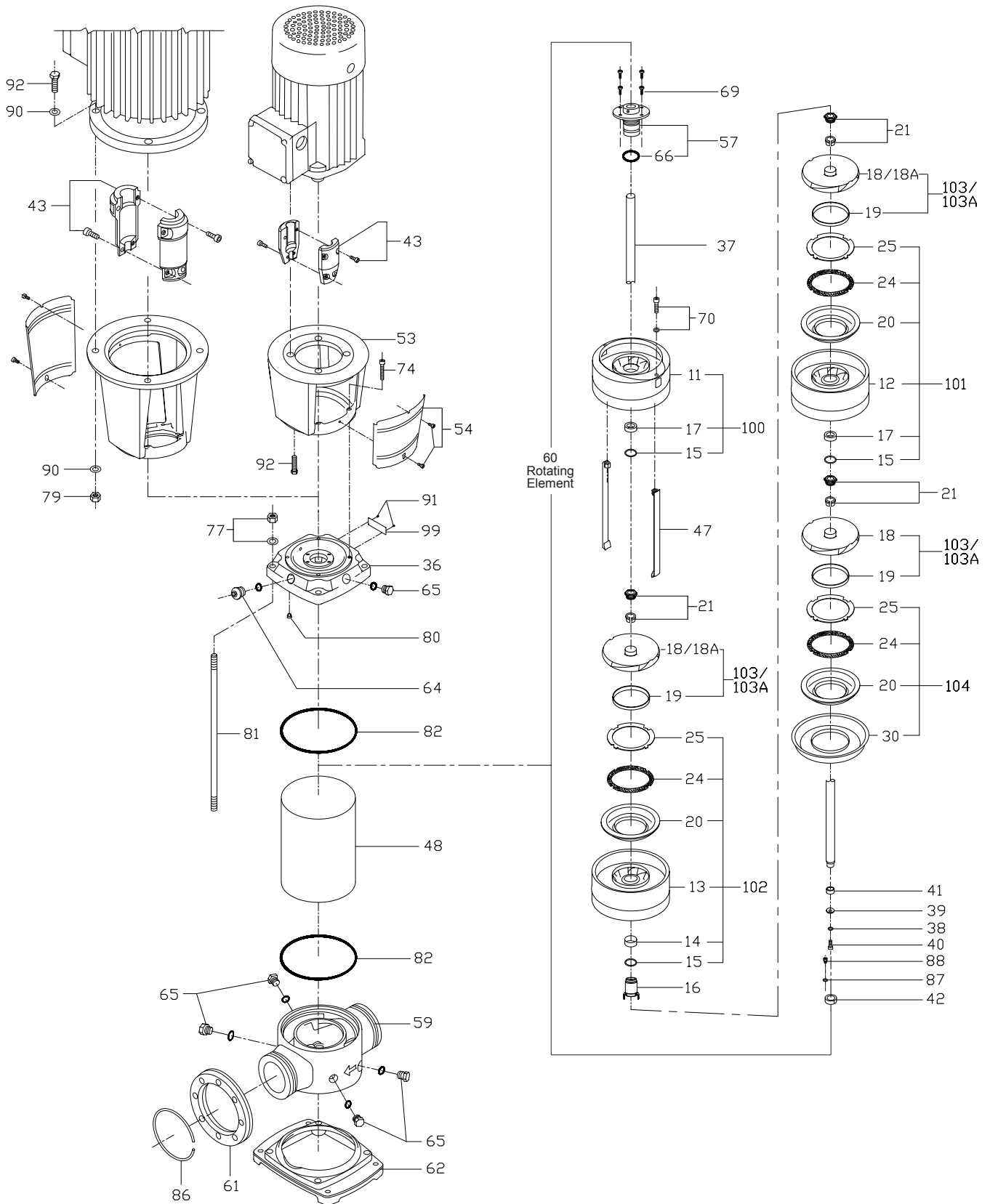
STAYBOLT SELECTION CHART

MODEL	SBI PART NO.	SBN PART NO.
SBI 45-1-1	SBI459810001-1	SBN4544810001-1
SBI 45-1	SBI459810001	SBN4544810001
SBI 45-2-2	SBI459810002-2	SBN4544810002-2
SBI 45-2	SBI459810002	SBN4544810002
SBI 45-3-2	SBI459810003-2	SBN4544810003-2
SBI 45-3	SBI459810003	SBN4544810003
SBI 45-4-2	SBI459810004-2	SBN4544810004-2
SBI 45-4	SBI459810004	SBN4544810004
SBI 45-5-2	SBI459810005-2	SBN4544810005-2
SBI 45-5	SBI459810005	SBN4544810005
SBI 45-6-2	SBI459810006-2	SBN4544810006-2
SBI 45-6	SBI459810006	SBN4544810006
SBI 45-7-2	SBI459810007-2	SBN4544810007-2
SBI 45-7	SBI459810007	SBN4544810007
SBI 45-8-2	SBI459810008-2	SBN4544810008-2
SBI 45-8	SBI459810008	SBN4544810008
SBI 45-9-2	SBI459810009-2	SBN4544810009-2
SBI 45-9	SBI459810009	SBN4544810009
SBI 45-10-2	SBI459810010-2	SBN4544810010-2
SBI 45-10	SBI459810010	SBN4544810010
SBI 45-11-2	SBI459810011-2	SBN4544810011-2
SBI 45-11	SBI459810011	SBN4544810011
SBI 45-12-2	SBI459810012-2	SBN4544810012-2
SBI 45-12	SBI459810012	SBN4544810012
SBI 45-13-2	SBI459810013-2	SBN4544810013-2



CENTRIFUGAL PUMPS

SBI(N)-64





CENTRIFUGAL PUMPS

SBI(N)-64

ILLUS. NO.	NO. PER UNIT	SBI PART NO.	SBN PART NO.	DESCRIPTION
11	1	SBI6441100	SBN6461100	Upper Diffuser
12	as reqd.	SBI6441200	SBN6461200	Diffuser
13	as reqd.	SBI6441300	SBN6461300	Diffuser with Bearing
14	as reqd.	SBI3241400	SBN3261400	Middle bearing
15	as reqd.	SBI3261500		Bearing fixed ring
16	1	SBI6461600		Bearing Sleeve
17	as reqd.	SBI3241700		Bearing
18	as reqd.	SBI6441800	SBN6461800	Impeller
18A	as reqd.	SBI64418000A	SBN64618000A	Impeller
19	1	SBI6441900	SBN6461900	bush
20	1	SBI6442000	SBN6462000	Neck ring base
21	as reqd.	SBI3242100	SBN3262100	Split Cone & Split Cone Nut
24	as reqd.	SBI6492400		Neck ring
25	as reqd.	SBI6442500	SBN6462500	Neck ring retainer
30	1	SBI6443000	SBN6463000	Strap Retainer
36	1	SBI4543600	SBN4563600	Pump Top Cap
37	1	SEE PUMP SHAFT SELECTION CHART		Pump shaft
38	1	SBI3263800		Spring Washer
39	1	SBI3293900	SBN3263900	Clamp Washer
40	1	SBI3294000	SBN3264000	Hexagon Socket Head Screw
41	1	SBI3294100		Bearing Internal Sleeve
42	1	SBI3294200		Bearing Outer Sleeve
43	1	SBI3294300B0		Coupling Assembly (Ψ28) 3-4kW
	1	SBI3294300C0		Coupling Assembly (Ψ38) 5.5-7.5kW
	1	SBI3294300D0		Coupling Assembly (Ψ42) 11-18.5kW
	1	SBI3294300E0		Coupling Assembly (Ψ48) 22kW
	1	SBI3294300F0		Coupling Assembly (Ψ55) 30-45kW
47	2	SEE STRAP SELECTION CHART		Strap
48	1	SEE PUMP CASING SELECTION CHART		Pump casing
53	1	SBI3295300B0		Motor stool (3-4kW)
	1	SBI3295300C0		Motor stool (5.5-7.5kW)
	1	SBI3295300D0		Motor stool (11-18.5kW)
	1	SBI3295300E0		Motor stool (30kW)
	1	SBI3295300F0		Motor stool (45kW)
54	1	SBI3245400A0		Coupling guard (1.5-7.5kW)
	1	SBI32445400B0		Coupling guard (11-30kW)
57	1	SBI3295700	SBN3265700	Mechanical Shaft Seal
59	1	SBI6445900	SBN6465900	Pump Base
60	1	SEE ROTATING ELEMENT SELECTION CHART		Rotating Element
61	2	SBI6496100		Suction/Discharge Flange
62	1	SBI4566200		Base plate
64	1	SBI0196400	SBN0166400	Air vent screw & O-ring
65	5	SBI0196500	SBN0166500	Plug & O-ring
66	1	SBI3296600E	SBN3266600V	O-ring
69	4	SBI3296900		Hexagon socket Head Screw
70	2	SBI3297000	SBN3267000	Hexagon Socket Head Screw & Washer



CENTRIFUGAL PUMPS

SBI(N)-64

ILLUS. NO.	NO. PER UNIT	SBI PART NO.	SBN PART NO.	DESCRIPTION
74	4		SBI3297400	Screw
77	4			Nut & Washer
79	4			Nut JSBM16 - 11kW and up
80	4	SBI3298000	SBN3298000	Locating Buffer
81	4	SEE STAYBOLT SELECTION CHART		Staybolt
82	2	SBI4598200	SBN4568200	Casing "O" Ring
86	2		SBI6498600	Retaining ring
87	4		SBI3268700	Washer
88	4		SBI3268800	Hexagon Socket Head Screw
90	4			Washer M16 - 11kW and up
92	4			Screw M8 - 1.5-4kW
	4			Screw M12 - 5.5-7.5kW
	4			Screw 16x55 - 11kW and up
100	1	SBI64-K0	SBN64-K0	Upper Diffuser Kit
101	as reqd.	SBI64-K1	SBN64-K1	Middle Diffuser Kit
102	as reqd.	SBI64-K2	SBN64-K2	Middle Diffuser with Bearing Kit
103	as reqd.	SBI64-K3	SBN64-K3	Impeller Kit
103A	as reqd.	SBI64-K3A	SBN64-K3A	Impeller Kit A
104	1	SBI64-K4	SBN64-K4	Neck Ring Base Kit

SHAFT SELECTION CHART

MODEL	SBI PART NO.	SBN PART NO.
SBI64-1-1	SBI649370001-1	SBN646370001-1
SBI64-1	SBI649370001	SBN646370001
SBI64-2-2	SBI649370002-2	SBN646370002-2
SBI64-2-1	SBI649370002-1	SBN646370002-1
SBI64-2	SBI649370002	SBN646370002
SBI64-3-2	SBI649370003-2	SBN646370003-2
SBI64-3-1	SBI649370003-1	SBN646370003-1
SBI64-3	SBI649370003	SBN646370003
SBI64-4-2	SBI649370002	SBN646370002
SBI64-4-1	SBI649370004-1	SBN646370004-1
SBI64-4	SBI649370004	SBN646370004
SBI64-5-2	SBI649370005-2	SBN646370005-2
SBI64-5-1	SBI649370005-1	SBN646370005-1
SBI64-5	SBI649370005	SBN646370005
SBI64-6-2	SBI649370006-2	SBN646370006-2
SBI64-6-1	SBI649370006-1	SBN646370006-1
SBI64-6	SBI649370006	SBN646370006
SBI64-7-2	SBI649370007-2	SBN646370007-2
SBI64-7-1	SBI649370007-1	SBN646370007-1
SBI64-7	SBI649370007	SBN646370007
SBI64-8-2	SBI649370008-2	SBN646370008-2
SBI64-8-1	SBI649370008-1	SBN646370008-1

STRAP SELECTION CHART

MODEL	SBI PART NO.	SBN PART NO.
SBI64-1-1	SBI649470001-1	SBN646470001-1
SBI64-1	SBI649470001	SBN646470001
SBI64-2-2	SBI649470002-2	SBN646470002-2
SBI64-2-1	SBI649470002-1	SBN646470002-1
SBI64-2	SBI649470002	SBN646470002
SBI64-3-2	SBI649470003-2	SBN646470003-2
SBI64-3-1	SBI649470003-1	SBN646470003-1
SBI64-3	SBI649470003	SBN646470003
SBI64-4-2	SBI649470002	SBN646470002
SBI64-4-1	SBI649470004-1	SBN646470004-1
SBI64-4	SBI649470004	SBN646470004
SBI64-5-2	SBI649470005-2	SBN646470005-2
SBI64-5-1	SBI649470005-1	SBN646470005-1
SBI64-5	SBI649470005	SBN646470005
SBI64-6-2	SBI649470006-2	SBN646470006-2
SBI64-6-1	SBI649470006-1	SBN646470006-1
SBI64-6	SBI649470006	SBN646470006
SBI64-7-2	SBI649470007-2	SBN646470007-2
SBI64-7-1	SBI649470007-1	SBN646470007-1
SBI64-7	SBI649470007	SBN646470007
SBI64-8-2	SBI649470008-2	SBN646470008-2
SBI64-8-1	SBI649470008-1	SBN646470008-1





CENTRIFUGAL PUMPS

SBI(N)-64

PUMP CASING SELECTION CHART

MODEL	SBI PART NO.	SBN PART NO.
SBI64-1-1	SBI649480001-1	SBN646480001-1
SBI64-1	SBI649480001	SBN646480001
SBI64-2-2	SBI649480002-2	SBN646480002-2
SBI64-2-1	SBI649480002-1	SBN646480002-1
SBI64-2	SBI649480002	SBN646480002
SBI64-3-2	SBI649480003-2	SBN646480003-2
SBI64-3-1	SBI649480003-1	SBN646480003-1
SBI64-3	SBI649480003	SBN646480003
SBI64-4-2	SBI649480002	SBN646480002
SBI64-4-1	SBI649480004-1	SBN646480004-1
SBI64-4	SBI649480004	SBN646480004
SBI64-5-2	SBI649480005-2	SBN646480005-2
SBI64-5-1	SBI649480005-1	SBN646480005-1
SBI64-5	SBI649480005	SBN646480005
SBI64-6-2	SBI649480006-2	SBN646480006-2
SBI64-6-1	SBI649480006-1	SBN646480006-1
SBI64-6	SBI649480006	SBN646480006
SBI64-7-2	SBI649480007-2	SBN646480007-2
SBI64-7-1	SBI649480007-1	SBN646480007-1
SBI64-7	SBI649480007	SBN646480007
SBI64-8-2	SBI649480008-2	SBN646480008-2
SBI64-8-1	SBI649480008-1	SBN646480008-1

ROTATING ELEMENT SELECTION CHART

MODEL	SBI PART NO.	SBN PART NO.
SBI64-1-1	SBI64-01-1R	SBN64-01-1R
SBI64-1	SBI64-01R	SBN64-01R
SBI64-2-2	SBI64-02-2R	SBN64-02-2R
SBI64-2-1	SBI64-02-1R	SBN64-02-1R
SBI64-2	SBI64-02R	SBN64-02R
SBI64-3-2	SBI64-03-2R	SBN64-03-2R
SBI64-3-1	SBI64-03-1R	SBN64-03-1R
SBI64-3	SBI64-03R	SBN64-03R
SBI64-4-2	SBI64-04-2R	SBN64-04-2R
SBI64-4-1	SBI64-04-1R	SBN64-04-1R
SBI64-4	SBI64-04R	SBN64-04R
SBI64-5-2	SBI64-05-2R	SBN64-05-2R
SBI64-5-1	SBI64-05-1R	SBN64-05-1R
SBI64-5	SBI64-05R	SBN64-05R
SBI64-6-2	SBI64-06-2R	SBN64-06-2R
SBI64-6-1	SBI64-06-1R	SBN64-06-1R
SBI64-6	SBI64-06R	SBN64-06R
SBI64-7-2	SBI64-07-2R	SBN64-07-2R
SBI64-7-1	SBI64-07-1R	SBN64-07-1R
SBI64-7	SBI64-07R	SBN64-07R
SBI64-8-2	SBI64-08-2R	SBN64-08-2R
SBI64-8-1	SBI64-08-1R	SBN64-08-1R

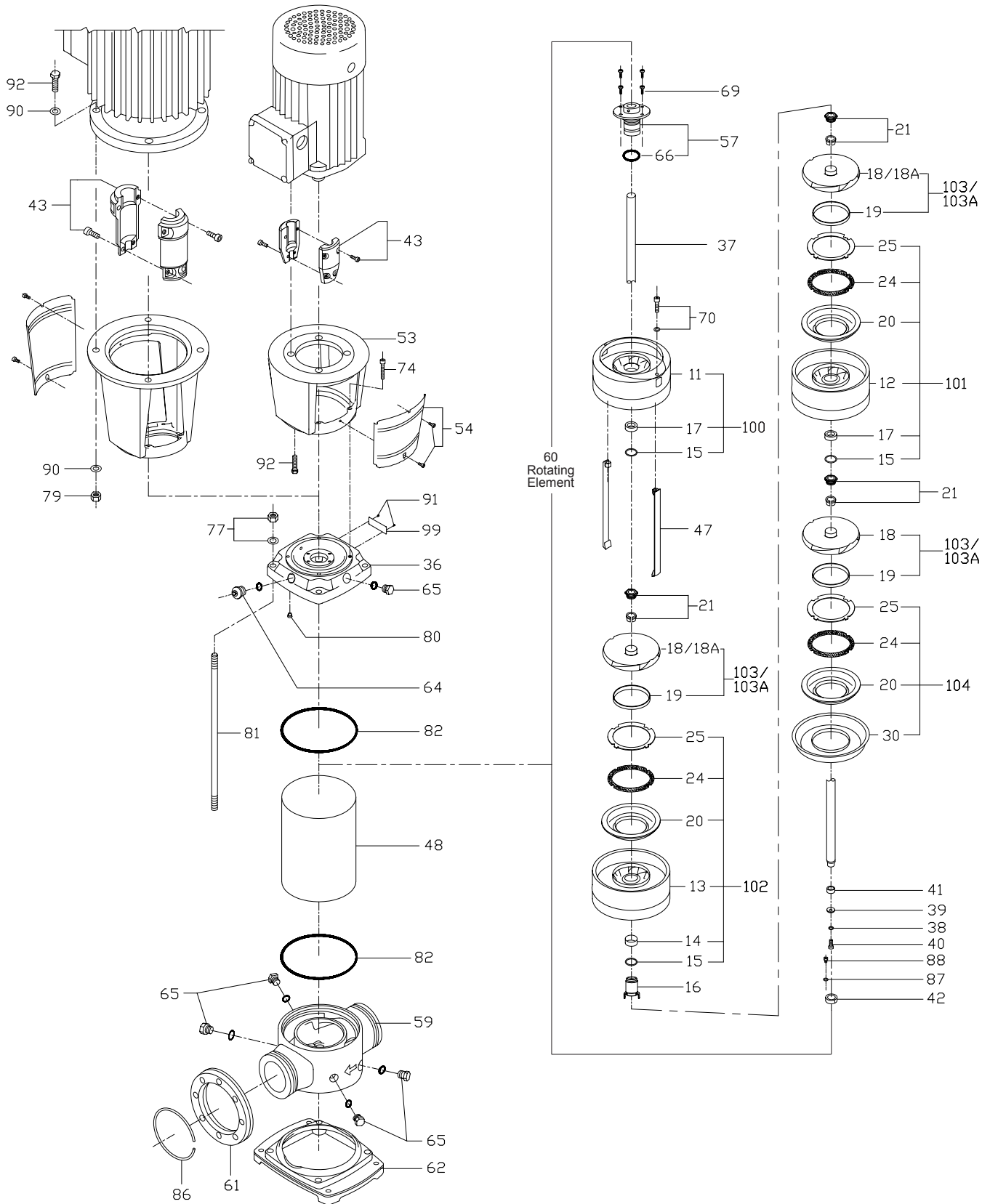
STAYBOLT SELECTION CHART

MODEL	SBI PART NO.	SBN PART NO.
SBI64-1-1	SBI649810001-1	SBN6444810001-1
SBI64-1	SBI649810001	SBN6444810001
SBI64-2-2	SBI649810002-2	SBN6444810002-2
SBI64-2-1	SBI649810002-1	SBN6444810002-1
SBI64-2	SBI649810002	SBN6444810002
SBI64-3-2	SBI649810003-2	SBN6444810003-2
SBI64-3-1	SBI649810003-1	SBN6444810003-1
SBI64-3	SBI649810003	SBN6444810003
SBI64-4-2	SBI649810004-2	SBN6444810004-2
SBI64-4-1	SBI649810004-1	SBN6444810004-1
SBI64-4	SBI649810004	SBN6444810004
SBI64-5-2	SBI649810005-2	SBN6444810005-2
SBI64-5-1	SBI649810005-1	SBN6444810005-1
SBI64-5	SBI649810005	SBN6444810005
SBI64-6-2	SBI649810006-2	SBN6444810006-2
SBI64-6-1	SBI649810006-1	SBN6444810006-1
SBI64-6	SBI649810006	SBN6444810006
SBI64-7-2	SBI649810007-2	SBN6444810007-2
SBI64-7-1	SBI649810007-1	SBN6444810007-1
SBI64-7	SBI649810007	SBN6444810007
SBI64-8-2	SBI649810008-2	SBN6444810008-2
SBI64-8-1	SBI649810008-1	SBN6444810008-1



CENTRIFUGAL PUMPS

SBI(N)-90



**CENTRIFUGAL PUMPS****SBI(N)-90**

ILLUS. NO.	NO. PER UNIT	SBI PART NO.	SBN PART NO.	DESCRIPTION
11	1	SBI9041100	SBN9061100	Discharge Part
+15	as reqd.		SBI3261500	Bearing fixed ring
+17	as reqd.		SBI3241700	Bearing
12	as reqd.	SBI9041200	SBN9061200	Upper Diffuser
+20	1	SBI9042000	SBN9062000	Neck ring base
+24	as reqd.	SBI9092400	SBN9092400	Neck ring
+25	as reqd.	SBI9042500	SBN9062500	Neck ring retainer
13	as reqd.	SBI9041300	SBN9061300	Middle diffuser with bearing ring
+14	as reqd.	SBI3241400	SBN3261400	Middle bearing
16	1	SBI9061600	SBN9061600	Bearing sleeve
18	as reqd.	SBI9041800	SBN9061800	Impeller
+19	as reqd.	SBI9041900	SBN9061900	Bush
18A	as reqd.	SBI90418000A	SBN90618000A	Impeller
21	as reqd.	SBI3242100	SBN3262100	Split cone
22	as reqd.	SBI3242200	SBN3262200	Split cone nut
30	1	SBI9043000	SBN9063000	Strap retainer
36	1	SBI9043600	SBN9063600	Pump head
37	1	SEE SHAFT SELECTION CHART		Pump shaft
38	1		SBI3263800	Spring washer
39	1		SBI3293900	Clamp washer
40	1			Hexagon socket head screw (M8 x 16L)
41	1		SBI3294100	Bearing internal sleeve
42	1		SBI3294200	Bearing outer sleeve
43	1		SBI3294300C0	Coupling Assembly (ψ38) 7.5, 10 HP
	1		SBI3294300D0	Coupling Assembly (ψ42) 15, 20, 25 HP
	1		SBI3294300E0	Coupling Assembly (ψ48) 30 HP
	1		SBI3294300F0	Coupling Assembly (ψ55) 40-60 HP
+73	1			Hexagon socket head screw (7.5-60HP)
47	2	SEE STRAP SLECTION CHART		Strap
48	1	SEE PUMP CASING SELECTION CHART		Pump casing
53	1		SBI3295300C0	Motor stool (7.5- 10 HP)
	1		SBI3295300D0	Motor stool (15- 30 HP)
	1		SBI3295300E0	Motor stool (40-50 HP)
	1		SBI4595300	Motor stool (60 HP)
54	1		SBI3245400A0	Coupling guard (2 ~ 10HP)
	1		SBI32445400B0	Coupling guard (15 ~ 60HP)
57	1		SBI3265700__	Shaft seal
	1	SBI3295700 TUN/TUN	SBN3265700 TUN/TUN	Shaft seal-SUU
+66	1	SBI3296600-P44	SBN3266600-P44	O-ring
59	1	SBI9045900	SBN9065900	Pump (Flange)
60	1	SEE ROTATING ELEMENT SELECTION CHART		Rotating Element
61	2		SBI6496100	Flange (PN 16)
	2		SBI6496100A0	Flange(PN 25)
62	1	SBI9066200		Base plate (Flange)
64	1	SBI0196400	SBN0166400	Air vent screw
65	5	SBI0196500	SBN0166500	Plug
69	4			Hexagon socket head screw
70	2			Hexagon socket head screw
71	4		SBI3267100	Washer
74	4			Screw

**CENTRIFUGAL PUMPS****SBI(N)-90**

ILLUS. NO.	NO. PER UNIT	SBI PART NO.	SBN PART NO.	DESCRIPTION
75				Screw
76				O-ring
77	4			Nut
78				Washer
79	4			Nut
80	4	SBI3298000	SBN3268000	Disc spring
81	4	SEE STAYBOLT SELECTION CHART		Staybolt
82	2	SBI9098200	SBN9068200	O-ring
86	2	SBI6498600		Retaining ring
87	4	SBI3268700		Washer
88	4			Hexagon socket head screw (M6 x 10L)
90	4			Washer (M16CR)
91	4			Nail
92	4			Screw (M12 x 35L)
	4			Screw (M16 x 55L)
99	1	SBI0199900	SBN0199900	Nameplate
100	1	SBI90-K0	SBN90-K0	Upper Diffuser Kit
101	as reqd.	SBI90-K1	SBN90-K1	Middle Diffuser Kit
102	as reqd.	SBI90-K2	SBN90-K2	Middle Diffuser with Bearing Kit
103	as reqd.	SBI90-K3	SBN90-K3	Impeller Kit
103A	as reqd.	SBI90-K3A	SBN90-K3A	Impeller Kit A
104	1	SBI90-K4	SBN90-K4	Neck Ring Base Kit

SHAFT SELECTION CHART

MODEL	SBI PART NO.	SBN PART NO.
SBI90-1-1	SBI909370001	SBN906370001
SBI90-1	SBI909370001	SBN906370001
SBI90-2-2	SBI909370002	SBN906370002
SBI90-2	SBI909370002	SBN906370002
SBI90-3-2	SBI909370003	SBN906370003
SBI90-3	SBI909370003	SBN906370003
SBI90-4-2	SBI909370004	SBN906370004
SBI90-4	SBI909370004	SBN906370004
SBI90-5-2	SBI909370005	SBN906370005
SBI90-5	SBI909370005	SBN906370005
SBI90-6-2	SBI909370006	SBN906370006
SBI90-6	SBI909370006	SBN906370006

STRAP SELECTION CHART

MODEL	SBI PART NO.	SBN PART NO.
SBI90-1-1	SBI909470001	SBI906470001
SBI90-1	SBI909470001	SBI906470001
SBI90-2-2	SBI909470002	SBI906470002
SBI90-2	SBI909470002	SBI906470002
SBI90-3-2	SBI909470003	SBI906470003
SBI90-3	SBI909470003	SBI906470003
SBI90-4-2	SBI909470004	SBI906470004
SBI90-4	SBI909470004	SBI906470004
SBI90-5-2	SBI909470005	SBI906470005
SBI90-5	SBI909470005	SBI906470005
SBI90-6-2	SBI909470006	SBI906470006
SBI90-6	SBI909470006	SBI906470006



CENTRIFUGAL PUMPS

SBI(N)-90

PUMP CASING SELECTION CHART

MODEL	SBI PART NO.	SBN PART NO.
SBI90-1-1	SBI909480001	SBN906480001
SBI90-1	SBI909480001	SBN906480001
SBI90-2-2	SBI909480002	SBN906480002
SBI90-2	SBI909480002	SBN906480002
SBI90-3-2	SBI909480003	SBN906480003
SBI90-3	SBI909480003	SBN906480003
SBI90-4-2	SBI909480004	SBN906480004
SBI90-4	SBI909480004	SBN906480004
SBI90-5-2	SBI909480005	SBN906480005
SBI90-5	SBI909480005	SBN906480005
SBI90-6-2	SBI909480006	SBN906480006
SBI90-6	SBI909480006	SBN906480006

ROTATING ELEMENT SELECTION CHART

MODEL	SBI PART NO.	SBN PART NO.
SBI90-1-1	SBI90-01-1R	SBN90-01-1R
SBI90-1	SBI90-01R	SBN90-01R
SBI90-2-2	SBI90-02-2R	SBN90-02-2R
SBI90-2	SBI90-02R	SBN90-02R
SBI90-3-2	SBI90-03-2R	SBN90-03-2R
SBI90-3	SBI90-03R	SBN90-03R
SBI90-4-2	SBI90-04-2R	SBN90-04-2R
SBI90-4	SBI90-04R	SBN90-04R
SBI90-5-2	SBI90-05-2R	SBN90-05-2R
SBI90-5	SBI90-05R	SBN90-05R
SBI90-6-2	SBI90-06-2R	SBN90-06-2R
SBI90-6	SBI90-06R	SBN90-06R

STAYBOLT SELECTION CHART

MODEL	SBI PART NO.	SBN PART NO.
SBI90-1-1	SBI904810001	SBI904810001
SBI90-1	SBI904810001	SBI904810001
SBI90-2-2	SBI904810002	SBI904810002
SBI90-2	SBI904810002	SBI904810002
SBI90-3-2	SBI904810003	SBI904810003
SBI90-3	SBI904810003	SBI904810003
SBI90-4-2	SBI904810004	SBI904810004
SBI90-4	SBI904810004	SBI904810004
SBI90-5-2	SBI904810005	SBI904810005
SBI90-5	SBI904810005	SBI904810005
SBI90-6-2	SBI904810006	SBI904810006
SBI90-6	SBI904810006	SBI904810006