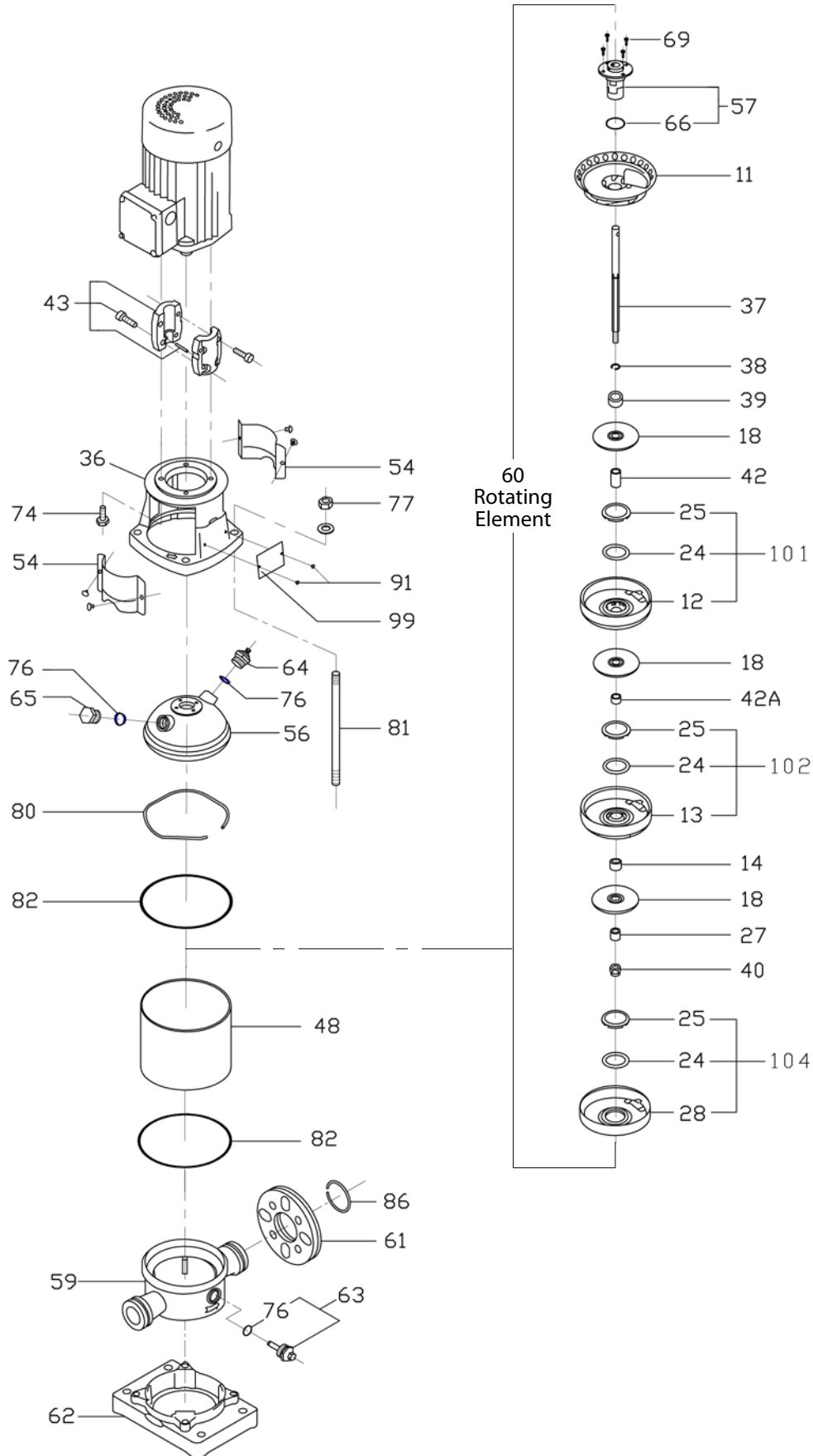




CENTRIFUGAL PUMPS

SBI(N)-1





CENTRIFUGAL PUMPS

SBI(N)-1

ILLUS. NO.	NO. PER UNIT	SBI PART NO.	SBN PART NO.	DESCRIPTION
11	1	SBI0141100	SBN0161100	Outlet Diffuser
12	as reqd.	SBI0141200	SBN0161200	Diffuser
13	as reqd.	SBI0141300	SBN0161300	Diffuser with Bearing
14	as reqd.	SBI0191400		Middle bearing
18	as reqd.	SBI0141800	SBN0161800	Impeller
24	as reqd.	SBI0192400		Neck ring
25	as reqd.	SBI0142500	SBN0162500	Neck ring retainer
27	1	SBI0192700	SBN0162700	Clamp Bush
28	1	SBI0142800	SBN0162800	Inlet Casing
36	1	SBI0163600A0		Motor Stool (0.37-0.55kW)
		SBI0163600B0		Motor Stool (0.75-1.1kW)
		SBI0163600C0		Motor Stool (1.5-2.2kW)
		SBI0163600D0		Motor Stool (3-4kW)
37	1	SEE SHAFT SELECTION CHART		Pump Shaft
38	1	SBI0163800		Shaft Ring
39	1	SBI0193900	SBN0163900	Shaft Bushing
40	1	(304SS)	(316SS)	Lock Nut (M8)
42	1	SBI4244200	SBN4264200	Spacing Bush (17.5mm)
42A	1	SBI4244200A0	SBN4264200A0	Spacing Bush (4.5mm)
43	1	SBI0194300A0		Coupling Assembly (0.37-0.55kW)
		SBI0194300B0		Coupling Assembly (0.75-1.1kW)
		SBI0194300C0		Coupling Assembly (1.5-2.2kW)
		SBI0194300D0		Coupling Assembly (3-4kW)
48	1	SEE PUMP CASING SELECTION CHART		Pump Casing
54	1	SBI0145400A0		Coupling Guard (0.37-1.1kW)
		SBI0145400B0		Coupling Guard (1.5-5.5kW)
56	1	SBI0145600	SBN0165600	Pump Top Cap
57	1	SBI0195700	SBN0165700	Mechanical Shaft Seal
59	1	SBI0145900A0	SBN0165900A0	Pump Base
60	1	SEE ROTATING ELEMENT SELECTION CHART		Rotating Element
61	1	SBI0166100		Suction/Discharge Flange
62	1	SBI0166200A0		Base Plate
63	1	SBI0146300	SBN0166300	Drain Plug
64	1	SBI0196400	SBN0166400	Air Vent Screw
65	1	SBI0196500	SBN0166500	Plug
66	1	SBI01066E		O-ring (EPDM)
		SBI01066V		O-ring (Viton)
69	4			Hexagon Socket Head Screw (M5)
74	4			Screw - M6*20L (0.37-0.55kW)
				Screw - M6*25L (0.75-1.1kW)
				Screw - M8*25L (1.5-2.2kW)
				Screw - M8*25L (3-4kW)
76	3	SBI01076E		O-ring (EPDM)
		SBI01076V		O-ring (Viton)
77	4			Nut & Washer
80	1	SBI0198000	SBN0168000	Locating Spring
81	4	SEE STAYBOLT SELECTION CHART		Staybolt
82	2	SBI0198200E		O-ring (EPDM)
		SBI0168200V		O-ring (Viton)



CENTRIFUGAL PUMPS

SBI(N)-1

ILLUS. NO.	NO. PER UNIT	SBI PART NO.	SBN PART NO.	DESCRIPTION
86	2		SBI0148600	Retaining Ring
101	as reqd.	SBI01-K1	SBN01-K1	Middle Diffuser Kit
102	as reqd.	SBI01-K2	SBN01-K2	Middle Diffuser with Bearing Kit
104	1	SBI01-K4	SBN01-K4	Inlet Casing Kit

SHAFT SELECTION CHART

MODEL	SBI PART NO.	SBN PART NO.
SBI1-02	SBI019370002	SBN016370002
SBI1-03	SBI019370003	SBN016370003
SBI1-04	SBI019370004	SBN016370004
SBI1-05	SBI019370005	SBN016370005
SBI1-06	SBI019370006	SBN016370006
SBI1-07	SBI019370007	SBN016370007
SBI1-08	SBI019370008	SBN016370008
SBI1-09	SBI019370009	SBN016370009
SBI1-10	SBI019370010	SBN016370010
SBI1-11	SBI019370011	SBN016370011
SBI1-12	SBI019370012	SBN016370012
SBI1-13	SBI019370013	SBN016370013
SBI1-15	SBI019370015	SBN016370015
SBI1-17	SBI019370017	SBN016370017
SBI1-19	SBI019370019	SBN016370019
SBI1-21	SBI019370021	SBN016370021
SBI1-23	SBI019370023	SBN016370023
SBI1-25	SBI019370025	SBN016370025
SBI1-27	SBI019370027	SBN016370027
SBI1-30	SBI019370030	SBN016370030
SBI1-33	SBI019370033	SBN016370033
SBI1-36	SBI019370036	SBN016370036

PUMP CASING SELECTION CHART

MODEL	SBI PART NO.	SBN PART NO.
SBI1-02	SBI014480002	SBN016480002
SBI1-03	SBI014480003	SBN016480003
SBI1-04	SBI014480004	SBN016480004
SBI1-05	SBI014480005	SBN016480005
SBI1-06	SBI014480006	SBN016480006
SBI1-07	SBI014480007	SBN016480007
SBI1-08	SBI014480008	SBN016480008
SBI1-09	SBI014480009	SBN016480009
SBI1-10	SBI014480010	SBN016480010
SBI1-11	SBI014480011	SBN016480011
SBI1-12	SBI014480012	SBN016480012
SBI1-13	SBI014480013	SBN016480013
SBI1-15	SBI014480015	SBN016480015
SBI1-17	SBI014480017	SBN016480017
SBI1-19	SBI014480019	SBN016480019
SBI1-21	SBI014480021	SBN016480021
SBI1-23	SBI014480023	SBN016480023
SBI1-25	SBI014480025	SBN016480025
SBI1-27	SBI014480027	SBN016480027
SBI1-30	SBI014480030	SBN016480030
SBI1-33	SBI014480033	SBN016480033
SBI1-36	SBI014480036	SBN016480036



CENTRIFUGAL PUMPS

SBI(N)-1

ROTATING ELEMENT SELECTION CHART

MODEL	SBI PART NO.	SBN PART NO.
SBI1-02	SBI1-02R	SBN1-02R
SBI1-03	SBI1-03R	SBN1-03R
SBI1-04	SBI1-04R	SBN1-04R
SBI1-05	SBI1-05R	SBN1-05R
SBI1-06	SBI1-06R	SBN1-06R
SBI1-07	SBI1-07R	SBN1-07R
SBI1-08	SBI1-08R	SBN1-08R
SBI1-09	SBI1-09R	SBN1-09R
SBI1-10	SBI1-10R	SBN1-10R
SBI1-11	SBI1-11R	SBN1-11R
SBI1-12	SBI1-12R	SBN1-12R
SBI1-13	SBI1-13R	SBN1-13R
SBI1-15	SBI1-15R	SBN1-15R
SBI1-17	SBI1-17R	SBN1-17R
SBI1-19	SBI1-19R	SBN1-19R
SBI1-21	SBI1-21R	SBN1-21R
SBI1-23	SBI1-23R	SBN1-23R
SBI1-25	SBI1-25R	SBN1-25R
SBI1-27	SBI1-27R	SBN1-27R
SBI1-30	SBI1-30R	SBN1-30R
SBI1-33	SBI1-33R	SBN1-33R
SBI1-36	SBI1-36R	SBN1-36R

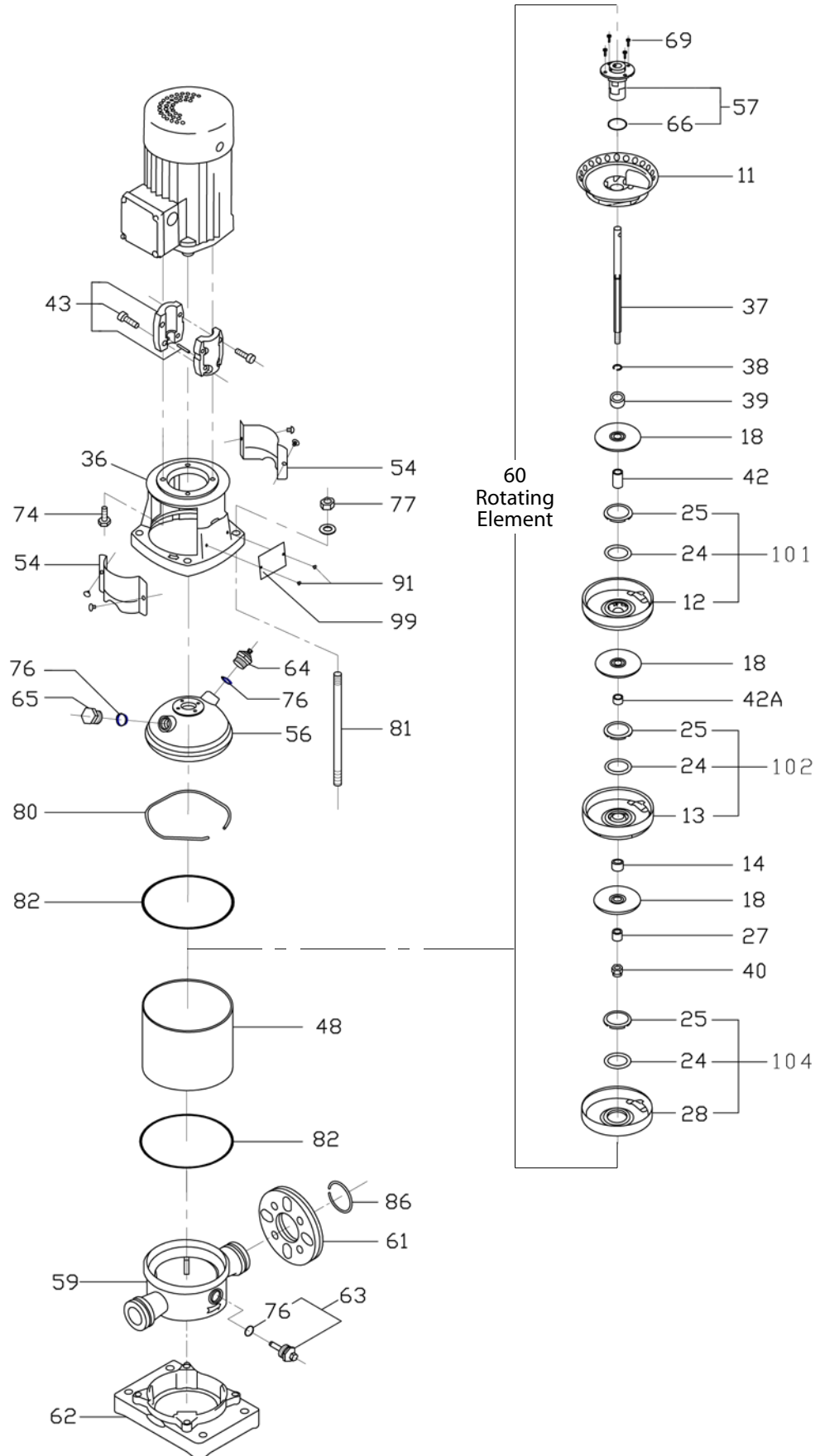
STAYBOLT SELECTION CHART

MODEL	SBI PART NO.	SBN PART NO.
SBI1-02	SBI014810002	SBI014810002
SBI1-03	SBI014810003	SBI014810003
SBI1-04	SBI014810004	SBI014810004
SBI1-05	SBI014810005	SBI014810005
SBI1-06	SBI014810006	SBI014810006
SBI1-07	SBI014810007	SBI014810007
SBI1-08	SBI014810008	SBI014810008
SBI1-09	SBI014810009	SBI014810009
SBI1-10	SBI014810010	SBI014810010
SBI1-11	SBI014810011	SBI014810011
SBI1-12	SBI014810012	SBI014810012
SBI1-13	SBI014810013	SBI014810013
SBI1-15	SBI014810015	SBI014810015
SBI1-17	SBI014810017	SBI014810017
SBI1-19	SBI014810019	SBI014810019
SBI1-21	SBI014810021	SBI014810021
SBI1-23	SBI014810023	SBI014810023
SBI1-25	SBI014810025	SBI014810025
SBI1-27	SBI014810027	SBI014810027
SBI1-30	SBI019810030	SBI019810030
SBI1-33	SBI019810033	SBI019810033
SBI1-36	SBI019810036	SBI019810036



CENTRIFUGAL PUMPS

SBI(N)-3





CENTRIFUGAL PUMPS

SBI(N)-3

ILLUS. NO.	NO. PER UNIT	SBI PART NO.	SBN PART NO.	DESCRIPTION
11	1	SBI0141100	SBN0161100	Outlet Diffuser
12	as reqd.	SBI0141200	SBN0161200	Diffuser
13	as reqd.	SBI0141300	SBN0161300	Diffuser with Bearing
14	as reqd.	SBI0191400		Middle bearing
18	as reqd.	SBI0341800	SBN0361800	Impeller
24	as reqd.	SBI0192400		Neck ring
25	as reqd.	SBI0142500	SBN0162500	Neck ring retainer
27	1	SBI0192700	SBN0162700	Clamp Bush
28	1	SBI0142800	SBN0162800	Inlet Casing
36	1	SBI0163600A0		Motor Stool (0.37-0.55kW)
		SBI0163600B0		Motor Stool (0.75-1.1kW)
		SBI0163600C0		Motor Stool (1.5-2.2kW)
		SBI0163600D0		Motor Stool (3-4kW)
37	1	SEE SHAFT SELECTION CHART		Pump Shaft
38	1	SBI0163800		Shaft Ring
39	1	SBI0193900	SBN0163900	Shaft Bushing
40	1	(304SS)	(316SS)	Lock Nut (M8)
42	1	SBI4244200	SBN4264200	Spacing Bush (17.5mm)
42A	1	SBI4244200A0	SBN4264200A0	Spacing Bush (4.5mm)
43	1	SBI0194300A0		Coupling Assembly (0.37-0.55kW)
		SBI0194300B0		Coupling Assembly (0.75-1.1kW)
		SBI0194300C0		Coupling Assembly (1.5-2.2kW)
		SBI0194300D0		Coupling Assembly (3-4kW)
48	1	SEE PUMP CASING SELECTION CHART		Pump Casing
54	1	SBI0145400A0		Coupling Guard (0.37-1.1kW)
		SBI0145400B0		Coupling Guard (1.5-5.5kW)
56	1	SBI0145600	SBN0165600	Pump Top Cap
57	1	SBI0195700	SBN0165700	Mechanical Shaft Seal
59	1	SBI0145900A0	SBN0165900A0	Pump Base
60	1	SEE ROTATING ELEMENT SELECTION CHART		Rotating Element
61	1	SBI0166100		Suction/Discharge Flange
62	1	SBI0166200A0		Base Plate
63	1	SBI0146300	SBN0166300	Drain Plug
64	1	SBI0196400	SBN0166400	Air Vent Screw
65	1	SBI0196500	SBN0166500	Plug
66	1	SBI01066E		O-ring (EPDM)
		SBI01066V		O-ring (Viton)
69	4			Hexagon Socket Head Screw (M5)
74	4			Screw - M6*20L (0.37-0.55kW)
				Screw - M6*25L (0.75-1.1kW)
				Screw - M8*25L (1.5-2.2kW)
				Screw - M8*25L (3-4kW)
76	3	SBI01076E		O-ring (EPDM)
		SBI01076V		O-ring (Viton)
77	4			Nut & Washer
80	1	SBI0198000	SBN0168000	Locating Spring
81	4	SEE STAYBOLT SELECTION CHART		Staybolt
82	2	SBI0198200E		O-ring (EPDM)
		SBI0168200V		O-ring (Viton)



CENTRIFUGAL PUMPS

SBI(N)-3

ILLUS. NO.	NO. PER UNIT	SBI PART NO.	SBN PART NO.	DESCRIPTION
86	2	SBI0148600	SBN0148600	Retaining Ring
101	as reqd.	SBI01-K1	SBN01-K1	Middle Diffuser Kit
102	as reqd.	SBI01-K2	SBN01-K2	Middle Diffuser with Bearing Kit
104	1	SBI01-K4	SBN01-K4	Inlet Casing Kit

SHAFT SELECTION CHART

MODEL	SBI PART NO.	SBN PART NO.
SBI3-02	SBI039370002	SBN036370002
SBI3-03	SBI039370003	SBN036370003
SBI3-04	SBI039370004	SBN036370004
SBI3-05	SBI039370005	SBN036370005
SBI3-06	SBI039370006	SBN036370006
SBI3-07	SBI039370007	SBN036370007
SBI3-08	SBI039370008	SBN036370008
SBI3-09	SBI039370009	SBN036370009
SBI3-10	SBI039370010	SBN036370010
SBI3-11	SBI039370011	SBN036370011
SBI3-12	SBI039370012	SBN036370012
SBI3-13	SBI039370013	SBN036370013
SBI3-15	SBI039370015	SBN036370015
SBI3-17	SBI039370017	SBN036370017
SBI3-19	SBI039370019	SBN036370019
SBI3-21	SBI039370021	SBN036370021
SBI3-23	SBI039370023	SBN036370023
SBI3-25	SBI039370025	SBN036370025
SBI3-27	SBI039370027	SBN036370027
SBI3-29	SBI039370029	SBN036370029
SBI3-31	SBI039370031	SBN036370031
SBI3-33	SBI039370033	SBN036370033
SBI3-36	SBI039370036	SBN036370036

PUMP CASING SELECTION CHART

MODEL	SBI PART NO.	SBN PART NO.
SBI3-02	SBI014480002	SBN016480002
SBI3-03	SBI014480003	SBN016480003
SBI3-04	SBI014480004	SBN016480004
SBI3-05	SBI014480005	SBN016480005
SBI3-06	SBI014480006	SBN016480006
SBI3-07	SBI014480007	SBN016480007
SBI3-08	SBI014480008	SBN016480008
SBI3-09	SBI014480009	SBN016480009
SBI3-10	SBI014480010	SBN016480010
SBI3-11	SBI014480011	SBN016480011
SBI3-12	SBI014480012	SBN016480012
SBI3-13	SBI014480013	SBN016480013
SBI3-15	SBI014480015	SBN016480015
SBI3-17	SBI014480017	SBN016480017
SBI3-19	SBI014480019	SBN016480019
SBI3-21	SBI014480021	SBN016480021
SBI3-23	SBI014480023	SBN016480023
SBI3-25	SBI014480025	SBN016480025
SBI3-27	SBI014480027	SBN016480027
SBI3-29	SBI034480029	SBN036480029
SBI3-31	SBI034480031	SBN036480031
SBI3-33	SBI014480033	SBN016480033
SBI3-36	SBI014480036	SBN016480036





CENTRIFUGAL PUMPS

SBI(N)-3

ROTATING ELEMENT SELECTION CHART

MODEL	SBI PART NO.	SBN PART NO.
SBI3-02	SBI3-02R	SBN3-02R
SBI3-03	SBI3-03R	SBN3-03R
SBI3-04	SBI3-04R	SBN3-04R
SBI3-05	SBI3-05R	SBN3-05R
SBI3-06	SBI3-06R	SBN3-06R
SBI3-07	SBI3-07R	SBN3-07R
SBI3-08	SBI3-08R	SBN3-08R
SBI3-09	SBI3-09R	SBN3-09R
SBI3-10	SBI3-10R	SBN3-10R
SBI3-11	SBI3-11R	SBN3-11R
SBI3-12	SBI3-12R	SBN3-12R
SBI3-13	SBI3-13R	SBN3-13R
SBI3-15	SBI3-15R	SBN3-15R
SBI3-17	SBI3-17R	SBN3-17R
SBI3-19	SBI3-19R	SBN3-19R
SBI3-21	SBI3-21R	SBN3-21R
SBI3-23	SBI3-23R	SBN3-23R
SBI3-25	SBI3-25R	SBN3-25R
SBI3-27	SBI3-27R	SBN3-27R
SBI3-29	SBI3-29R	SBN3-29R
SBI3-31	SBI3-31R	SBN3-31R
SBI3-33	SBI3-33R	SBN3-33R
SBI3-36	SBI3-36R	SBN3-36R

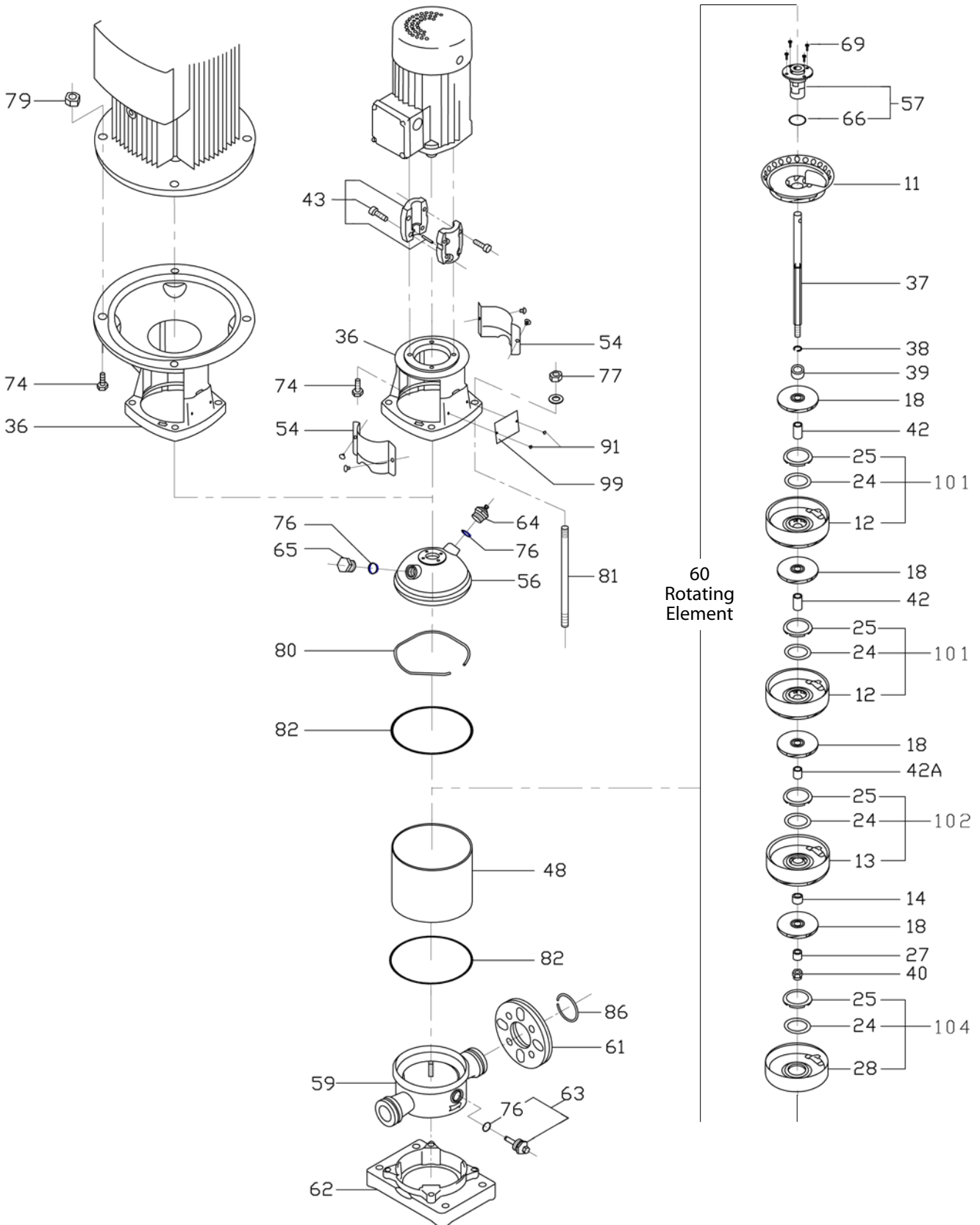
STAYBOLT SELECTION CHART

MODEL	SBI PART NO.	SBN PART NO.
SBI1-02	SBI014810002	SBI014810002
SBI1-03	SBI014810003	SBI014810003
SBI1-04	SBI014810004	SBI014810004
SBI1-05	SBI014810005	SBI014810005
SBI1-06	SBI014810006	SBI014810006
SBI1-07	SBI014810007	SBI014810007
SBI1-08	SBI014810008	SBI014810008
SBI1-09	SBI014810009	SBI014810009
SBI1-10	SBI014810010	SBI014810010
SBI1-11	SBI014810011	SBI014810011
SBI1-12	SBI014810012	SBI014810012
SBI1-13	SBI014810013	SBI014810013
SBI1-15	SBI014810015	SBI014810015
SBI1-17	SBI014810017	SBI014810017
SBI1-19	SBI014810019	SBI014810019
SBI1-21	SBI014810021	SBI014810021
SBI1-23	SBI014810023	SBI014810023
SBI1-25	SBI014810025	SBI014810025
SBI1-27	SBI014810027	SBI014810027
SBI1-29	SBI034810029	SBI034810029
SBI1-31	SBI034810031	SBI034810031
SBI1-33	SBI019810033	SBI019810033
SBI1-36	SBI019810036	SBI019810036



CENTRIFUGAL PUMPS

SBI(N)-5



**CENTRIFUGAL PUMPS****SBI(N)-5**

ILLUS. NO.	NO. PER UNIT	SBI PART NO.	SBN PART NO.	DESCRIPTION
11	1	SBI0541100	SBN0561100	Outlet Diffuser
12	as reqd.	SBI0541200	SBN0561200	Diffuser
13	as reqd.	SBI0541300	SBN0561300	Diffuser with Bearing
14	as reqd.	SBI0191400		Middle bearing
18	as reqd.	SBI0541800	SBN0561800	Impeller
24	as reqd.	SBI0592400		Neck ring
25	as reqd.	SBI0542500	SBN0562500	Neck ring retainer
27	1	SBI0192700	SBN0162700	Clamp Bush
28	1	SBI0542800	SBN0562800	Inlet Casing
36	1	SBI0163600A0		Motor Stool (0.37-0.55kW)
		SBI0163600B0		Motor Stool (0.75-1.1kW)
		SBI0163600C0		Motor Stool (1.5-2.2kW)
		SBI0163600D0		Motor Stool (3-4kW)
		SBI0563600		Motor Stool (5.5kW)
37	1	SEE SHAFT SELECTION CHART		Pump Shaft
38	1	SBI0163800		Shaft Ring
39	1	SBI0593900	SBN0563900	Shaft Bushing
40	1	(304SS)	(316SS)	Lock Nut (M8)
42	1	SBI0544200	SBN0564200	Spacing Bush (17.5mm)
42A	1	SBI0544200A0	SBN0564200A0	Spacing Bush (4.5mm)
43	1	SBI0194300A0		Coupling Assembly (0.37-0.55kW)
		SBI0194300B0		Coupling Assembly (0.75-1.1kW)
		SBI0194300C0		Coupling Assembly (1.5-2.2kW)
		SBI0194300D0		Coupling Assembly (3-4kW)
		SBI0594300		Coupling Assembly (5.5kW)
48	1	SEE PUMP CASING SELECTION CHART		Pump Casing
54	2	SBI0145400A0		Coupling Guard (0.37-1.1kW)
		SBI0145400B0		Coupling Guard (1.5-5.5kW)
56	1	SBI0145600	SBN0165600	Pump Top Cap
57	1	SBI0195700	SBN0165700	Mechanical Shaft Seal
59	1	SBI0145900A0	SBN0165900A0	Pump Base
60	1	SEE ROTATING ELEMENT SELECTION CHART		Rotating Element
61	1	SBI0166100		Suction/Discharge Flange
62	1	SBI0166200A0		Base Plate
63	1	SBI0146300	SBN0166300	Drain Plug
64	1	SBI0196400	SBN166400	Air Vent Screw & O-ring
65	1	SBI0196500		Plug
66	1	SBI01066E		O-ring (EPDM)
		SBI01066V		O-ring (Viton)
69	4			Hexagon Socket Head Screw (M5)
74	4			Screw - M6*20L (0.37-0.55kW)
				Screw - M6*25L (0.75-1.1kW)
				Screw - M8*25L (1.5-2.2kW)
				Screw - M8*25L (3-4kW)
				Screw - M16*45L (5.5kW)
76	3	SBI01076E		O-ring (EPDM)
		SBI01076V		O-ring (Viton)
77	4			Nut & Washer (M12)



CENTRIFUGAL PUMPS

SBI(N)-5

ILLUS. NO.	NO. PER UNIT	SBI PART NO.	SBN PART NO.	DESCRIPTION
79	4			Nut (M12)
80	1	SBI0198000	SBN0168000	Locating Ring
81	4	SEE STAYBOLT SELECTION CHART		Staybolt
82	2	SBI0198200E		O-ring (EPDM)
		SBI0168200V		O-ring (Viton)
86	2	SBI0148600		Retaining Ring
101	as reqd.	SBI05-K1	SBN05-K1	Middle Diffuser Kit
102	as reqd.	SBI05-K2	SBN05-K2	Middle Diffuser with Bearing Kit
104	1	SBI05-K4	SBN05-K4	Inlet Casing Kit

SHAFT SELECTION CHART

MODEL	SBI PART NO.	SBN PART NO.
SBI5-02	SBI059370002	SBN056370002
SBI5-03	SBI059370003	SBN056370003
SBI5-04	SBI059370004	SBN056370004
SBI5-05	SBI059370005	SBN056370005
SBI5-06	SBI059370006	SBN056370006
SBI5-07	SBI059370007	SBN056370007
SBI5-08	SBI059370008	SBN056370008
SBI5-09	SBI059370009	SBN056370009
SBI5-10	SBI059370010	SBN056370010
SBI5-11	SBI059370011	SBN056370011
SBI5-12	SBI059370012	SBN056370012
SBI5-13	SBI059370013	SBN056370013
SBI5-14	SBI059370015	SBN056370014
SBI5-15	SBI059370017	SBN056370015
SBI5-16	SBI059370019	SBN056370016
SBI5-18	SBI059370021	SBN056370018
SBI5-20	SBI059370023	SBN056370020
SBI5-22	SBI059370025	SBN056370022
SBI5-24	SBI059370027	SBN056370024
SBI5-26	SBI059370029	SBN056370026
SBI5-29	SBI059370030	SBN056370029
SBI5-32	SBI059370033	SBN056370032
SBI5-36	SBI059370036	SBN056370036

PUMP CASING SELECTION CHART

MODEL	SBI PART NO.	SBN PART NO.
SBI5-02	SBI054480002	SBN056480002
SBI5-03	SBI054480003	SBN056480003
SBI5-04	SBI054480004	SBN056480004
SBI5-05	SBI054480005	SBN056480005
SBI5-06	SBI054480006	SBN056480006
SBI5-07	SBI054480007	SBN056480007
SBI5-08	SBI054480008	SBN056480008
SBI5-09	SBI054480009	SBN056480009
SBI5-10	SBI054480010	SBN056480010
SBI5-11	SBI054480011	SBN056480011
SBI5-12	SBI054480012	SBN056480012
SBI5-13	SBI054480013	SBN056480013
SBI5-14	SBI054480014	SBN056480014
SBI5-15	SBI054480015	SBN056480015
SBI5-16	SBI054480016	SBN056480016
SBI5-18	SBI054480018	SBN056480018
SBI5-20	SBI054480020	SBN056480020
SBI5-22	SBI054480022	SBN056480022
SBI5-24	SBI054480024	SBN056480024
SBI5-26	SBI054480026	SBN056480026
SBI5-29	SBI054480029	SBN056480029
SBI5-32	SBI054480032	SBN056480032
SBI5-36	SBI054480036	SBN056480036



CENTRIFUGAL PUMPS

SBI(N)-5

ROTATING ELEMENT SELECTION CHART

MODEL	SBI PART NO.	SBN PART NO.
SBI5-02	SBI5-02R	SBN5-02R
SBI5-03	SBI5-03R	SBN5-03R
SBI5-04	SBI5-04R	SBN5-04R
SBI5-05	SBI5-05R	SBN5-05R
SBI5-06	SBI5-06R	SBN5-06R
SBI5-07	SBI5-07R	SBN5-07R
SBI5-08	SBI5-08R	SBN5-08R
SBI5-09	SBI5-09R	SBN5-09R
SBI5-10	SBI5-10R	SBN5-10R
SBI5-11	SBI5-11R	SBN5-11R
SBI5-12	SBI5-12R	SBN5-12R
SBI5-13	SBI5-13R	SBN5-13R
SBI5-14	SBI5-14R	SBN5-14R
SBI5-15	SBI5-15R	SBN5-15R
SBI5-16	SBI5-16R	SBN5-16R
SBI5-18	SBI5-18R	SBN5-18R
SBI5-20	SBI5-20R	SBN5-20R
SBI5-22	SBI5-22R	SBN5-22R
SBI5-24	SBI5-24R	SBN5-24R
SBI5-26	SBI5-26R	SBN5-26R
SBI5-29	SBI5-29R	SBN5-29R
SBI5-32	SBI5-32R	SBN5-32R
SBI5-36	SBI5-36R	SBN5-36R

STAYBOLT SELECTION CHART

MODEL	SBI PART NO.	SBN PART NO.
SBI5-02	SBI054810002	SBI054810002
SBI5-03	SBI054810003	SBI054810003
SBI5-04	SBI054810004	SBI054810004
SBI5-05	SBI054810005	SBI054810005
SBI5-06	SBI054810006	SBI054810006
SBI5-07	SBI054810007	SBI054810007
SBI5-08	SBI054810008	SBI054810008
SBI5-09	SBI054810009	SBI054810009
SBI5-10	SBI054810010	SBI054810010
SBI5-11	SBI054810011	SBI054810011
SBI5-12	SBI054810012	SBI054810012
SBI5-13	SBI054810013	SBI054810013
SBI5-14	SBI054810014	SBI054810014
SBI5-15	SBI054810015	SBI054810015
SBI5-16	SBI054810016	SBI054810016
SBI5-18	SBI054810018	SBI054810018
SBI5-20	SBI054810020	SBI054810020
SBI5-22	SBI054810022	SBI054810022
SBI5-24	SBI054810024	SBI054810024
SBI5-26	SBI054810026	SBI054810026
SBI5-29	SBI054810029	SBI054810029
SBI5-32	SBI054810032	SBI054810032
SBI5-36	SBI054810036	SBI054810036