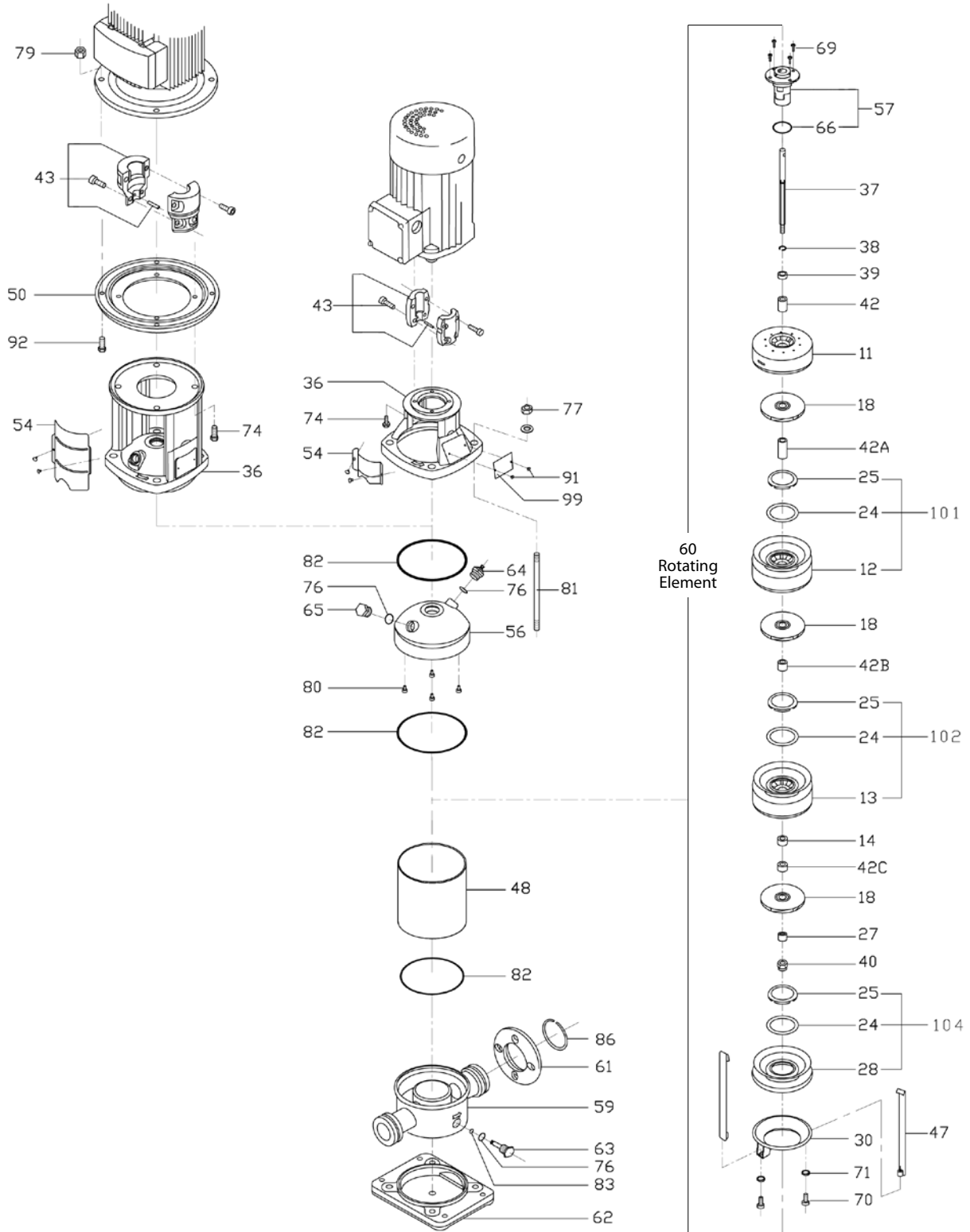




CENTRIFUGAL PUMPS

SBI(N)-10





CENTRIFUGAL PUMPS

SBI(N)-10

ILLUS. NO.	NO. PER UNIT	SBI PART NO.	SBN PART NO.	DESCRIPTION
11	1	SBI1041100	SBN1061100	Outlet Diffuser
12	as reqd.	SBI1041200	SBN1061200	Diffuser
13	as reqd.	SBI1041300	SBN1061300	Diffuser with Bearing
14	as reqd.	SBI1091400		Middle Bearing
18	as reqd.	SBI1041800	SBN1061800	Impeller
24	as reqd.	SBI1092400		Neck ring
25	as reqd.	SBI1042500	SBN1062500	Neck ring retainer
27	1	SBI1092700	SBN1062700	Clamp Bush
28	1	SBI1042800	SBN1062800	Inlet Casing
30	1	SBI1093000	SBN1063000	Strap retainer
36	1	SBI1063600A0 SBI1063600B0 SBI1063600C0 SBI1063600D0 SBI1063600E0 SBI1063600F0		Motor Stool
37	1	SEE PUMP SHAFT SELECTION CHART		Pump shaft
38	1	SBI1063800		Spring Washer
39	1	SBI1093900	SBN1063900	Clamp Washer
40	1	(304SS)	(316SS)	Lock nut (M8)
42	1	SBI1094200	SBN1064200	Spacing Bush
42A	1	SBI1094200A0	SBN1064200A0	Spacing Bush
42B	as reqd.	SBI1094200B0	SBN1064200B0	Spacing Bush
42C	1	SBI1094200C0	SBN1064200C0	Spacing Bush
43	1	SBI1094300A0 SBI1094300B0 SBI1094300C0 SBI1094300D0 SBI1094300E0 SBI1094300F0		Coupling Assembly (Ψ14) 0.37-0.55kW Coupling Assembly (Ψ19) 0.75-1.1kW Coupling Assembly (Ψ24) 1.5-2.2kW Coupling Assembly (Ψ28) 3-4kW Coupling Assembly (Ψ38) 5.5-7.5kW Coupling Assembly (Ψ42) 11-18.5kW
47	2	SEE STRAP SELECTION CHART		Strap
48	1	SEE PUMP CASING SELECTION CHART		Pump Casing
50	1	SBI1095000A0 SBI1095000B0		Adaptor Flange (5.5kW) Adaptor Flange (11kW)
54	2	SBI1045400A0 SBI1045400B0 SBI1045400C0 SBI1045400D0		Coupling Guard (0.37kW) Coupling Guard (1.5kW) Coupling Guard (5.5kW) Coupling Guard (11kW)
56	1	SBI1045600	SBN1065600	Pump Top Cap
57	1	SBI1095700	SBN1065700	Mechanical Shaft Seal
59	1	SBI1045900A0	SBN1065900A0	Pump Base
60	1	SEE ROTATING ELEMENT SELECTION CHART		Rotating Element
61	2	SBI1066100		Suction/Discharge Flange
62	1	SBI1066200		Base Plate
63	1	SBI1046300	SBN1066300	Drain Plug
64	1	SBI0196400	SBN0166400	Air Vent Screw
65	1	SBI0196500	SBN0166500	Plug
66	1	SBI10066E SBI10066V		O-ring (EPDM) A-123 O-ring (Viton)



CENTRIFUGAL PUMPS

SBI(N)-10

ILLUS. NO.	NO. PER UNIT	SBI PART NO.	SBN PART NO.	DESCRIPTION
69	4			Hexagon Socket Head Screw (M6)
70	2			Hexagon Socket Head Screw (M8x30)
71	2			Washer
74	4			Screw (M6x20) 0.37-0.5kW Screw (M6x25) 0.75-1.1kW Screw (M8x20) 1.5-2.2kW Screw (M8x25) 3-4kW Screw (M12x25) 5.5-7.5kW Screw (M16x45) 11-15kW
76	3	SBI10076E SBI10076V		O-ring (EPDM) P16 O-ring (Viton)
77	4			Nut (M16) and washer
79	4			Nut (M12x35) 5.5-7.5kW Nut (M16x55) 11-15kW
80	4	SBI1098000E SBI1068000V	SBN1098000E SBN1068000V	Locating Buffer(EPDM) Locating Buffer (Viton)
81	4	SEE STAYBOLT SELECTION CHART		Staybolt
82	3	SBI1098200E SBI1068200V		O-ring (EPDM) O-ring (Viton)
83	1	SBI10083E SBI10083V		O-ring (EPDM) O-ring (Viton)
86	2	SBI1048600(304)		Retaining ring
92	4			Screw (M12x35) 5.5-7.5kW Screw (M16x55) 11-15kW
101	as reqd.	SBI10-K1	SBN10-K1	Diffuser Kit
102	as reqd.	SBI10-K2	SBN10-K2	Diffuser with Bearing Kit
104	1	SBI10-K4	SBN10-K4	Inlet Casing Kit

SHAFT SELECTION CHART

MODEL	SBI PART NO.	SBN PART NO.
SBI10-01	SBI109370001	SBN106370001
SBI10-02	SBI109370002	SBN106370002
SBI10-03	SBI109370003	SBN106370003
SBI10-04	SBI109370004	SBN106370004
SBI10-05	SBI109370005	SBN106370005
SBI10-06	SBI109370006	SBN106370006
SBI10-07	SBI109370007	SBN106370007
SBI10-08	SBI109370008	SBN106370008
SBI10-09	SBI109370009	SBN106370009
SBI10-10	SBI109370010	SBN106370010
SBI10-12	SBI109370012	SBN106370012
SBI10-14	SBI109370014	SBN106370014
SBI10-16	SBI109370016	SBN106370016
SBI10-17	SBI109370017	SBN106370017
SBI10-18	SBI109370018	SBN106370018
SBI10-20	SBI109370020	SBN106370020
SBI10-22	SBI109370022	SBN106370022

STRAP SELECTION CHART

MODEL	SBI PART NO.	SBN PART NO.
SBI10-01	SBI104470101	SBN106470001
SBI10-02	SBI104470102	SBN106470002
SBI10-03	SBI104470103	SBN106470003
SBI10-04	SBI104470104	SBN106470004
SBI10-05	SBI104470105	SBN106470005
SBI10-06	SBI104470106	SBN106470006
SBI10-07	SBI104470107	SBN106470007
SBI10-08	SBI104470108	SBN106470008
SBI10-09	SBI104470109	SBN106470009
SBI10-10	SBI104470110	SBN106470010
SBI10-12	SBI104470112	SBN106470012
SBI10-14	SBI104470114	SBN106470014
SBI10-16	SBI104470116	SBN106470016
SBI10-17	SBI104470017	SBN106470017
SBI10-18	SBI104470118	SBN106470018
SBI10-20	SBI104470120	SBN106470020
SBI10-22	SBI104470122	SBN106470022



CENTRIFUGAL PUMPS

SBI(N)-10

PUMP CASING SELECTION CHART

MODEL	SBI PART NO.	SBN PART NO.
SBI10-01	SBI104480001	SBN106480001
SBI10-02	SBI104480002	SBN106480002
SBI10-03	SBI104480003	SBN106480003
SBI10-04	SBI104480004	SBN106480004
SBI10-05	SBI104480005	SBN106480005
SBI10-06	SBI104480006	SBN106480006
SBI10-07	SBI104480007	SBN106480007
SBI10-08	SBI104480008	SBN106480008
SBI10-09	SBI104480009	SBN106480009
SBI10-10	SBI104480010	SBN106480010
SBI10-12	SBI104480012	SBN106480012
SBI10-14	SBI104480014	SBN106480014
SBI10-16	SBI104480016	SBN106480016
SBI10-17	SBI104480017	SBN106480017
SBI10-18	SBI104480018	SBN106480018
SBI10-20	SBI104480020	SBN106480020
SBI10-22	SBI104480022	SBN106480022

ROTATING ELEMENT SELECTION CHART

MODEL	SBI PART NO.	SBN PART NO.
SBI10-01	SBI10-01R	SBN10-01R
SBI10-02	SBI10-02R	SBN10-02R
SBI10-03	SBI10-03R	SBN10-03R
SBI10-04	SBI10-04R	SBN10-04R
SBI10-05	SBI10-05R	SBN10-05R
SBI10-06	SBI10-06R	SBN10-06R
SBI10-07	SBI10-07R	SBN10-07R
SBI10-08	SBI10-08R	SBN10-08R
SBI10-09	SBI10-09R	SBN10-09R
SBI10-10	SBI10-10R	SBN10-10R
SBI10-12	SBI10-12R	SBN10-12R
SBI10-14	SBI10-14R	SBN10-14R
SBI10-16	SBI10-16R	SBN10-16R
SBI10-17	SBI10-17R	SBN10-17R
SBI10-18	SBI10-18R	SBN10-18R
SBI10-20	SBI10-20R	SBN10-20R
SBI10-22	SBI10-22R	SBN10-22R

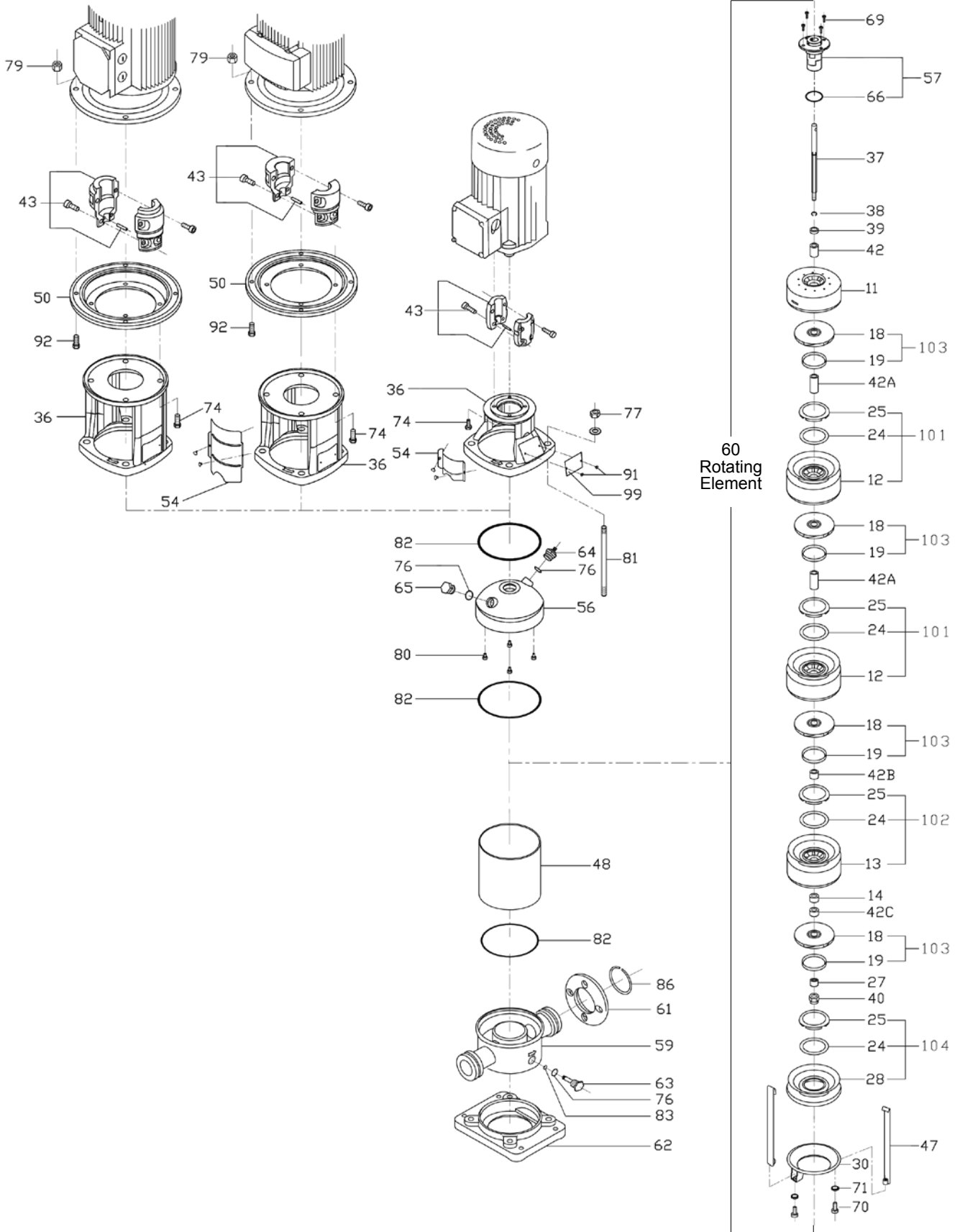
STAYBOLT SELECTION CHART

MODEL	SBI PART NO.	SBN PART NO.
SBI10-01	SBI104810001	SBI104810001
SBI10-02	SBI104810002	SBI104810002
SBI10-03	SBI104810003	SBI104810003
SBI10-04	SBI104810004	SBI104810004
SBI10-05	SBI104810005	SBI104810005
SBI10-06	SBI104810006	SBI104810006
SBI10-07	SBI104810007	SBI104810007
SBI10-08	SBI104810008	SBI104810008
SBI10-09	SBI104810009	SBI104810009
SBI10-10	SBI104810010	SBI104810010
SBI10-12	SBI104810012	SBI104810012
SBI10-14	SBI104810014	SBI104810014
SBI10-16	SBI104810016	SBI104810016
SBI10-17	SBI104810017	SBI104810017
SBI10-18	SBI104810018	SBI104810018
SBI10-20	SBI104810020	SBI104810020
SBI10-22	SBI104810022	SBI104810022



CENTRIFUGAL PUMPS

SBI(N)-15



**CENTRIFUGAL PUMPS****SBI(N)-15**

ILLUS. NO.	NO. PER UNIT	SBI PART NO.	SBN PART NO.	DESCRIPTION
11	1	SBI1541100	SBN1561100	Outlet Diffuser
12	as reqd.	SBI1541200	SBN1561200	Diffuser
13	as reqd.	SBI1541300	SBN1561300	Diffuser with Bearing
14	as reqd.	SBI1091400		Middle Bearing
18	as reqd.	SBI1541800	SBN1561800	Impeller
19	as reqd.	SBI1541900	SBN1561900	Bush
24	as reqd.	SBI1592400		Neck Ring
25	as reqd.	SBI1542500	SBN1562500	Neck Ring Retainer
27	1	SBI1092700	SBN1062700	Clamp Bush
28	1	SBI1542800	SBN1562800	Inlet Casing
30	1	SBI1093000	SBN1063000	Strap Retainer
36	1	SBI1063600A0 SBI1063600B0 SBI1063600C0 SBI1063600D0 SBI1063600E0 SBI1063600F0		Motor Stool
37	1	SEE PUMP SHAFT SELECTION CHART		Pump Shaft
38	1	SBI1063800		Spring Washer
39	1	SBI1093900	SBN1063900	Clamp Washer
40	1	(304SS)	(316SS)	Lock Nut (M8)
42	1	SBI1594200	SBN1564200	Spacing Bush
42A	1	SBI1594200A0	SBN1564200A0	Spacing Bush
42B	as reqd.	SBI1594200B0	SBN1564200B0	Spacing Bush
42C	1	SBI1594200C0	SBN1564200C0	Spacing Bush
43	1	SBI1094300A0 SBI1094300B0 SBI1094300C0 SBI1094300D0 SBI1094300E0 SBI1094300F0		Coupling Assembly (Ψ14) 0.37-0.55kW Coupling Assembly (Ψ19) 0.75-1.1kW Coupling Assembly (Ψ24) 1.5-2.2kW Coupling Assembly (Ψ28) 3-4kW Coupling Assembly (Ψ38) 5.5-7.5kW Coupling Assembly (Ψ42) 11-15kW
47	2	SEE STRAP SELECTION CHART		Strap
48	1	SEE PUMP CASING SELECTION CHART		Pump Casing
50	1	SBI1095000A0 SBI1095000B0		Adaptor Flange (5.5-7.5kW) Adaptor Flange (11-15kW)
54	2	SBI1045400A0 SBI1045400B0 SBI1045400C0 SBI1045400D0		Coupling Guard (0.37-1.1kW) Coupling Guard (1.5-4kW) Coupling Guard (5.5-7.5kW) Coupling Guard (11-18.5kW)
56	1	SBI1045600	SBN1065600	Pump Top Cap
57	1	SBI1095700	SBN1065700	Mechanical Shaft Seal
59	1	SBI1545900A0	SBN1565900A0	Pump Base
60	1	SEE ROTATING ELEMENT SELECTION CHART		Rotating Element
61	2	SBI1566100		Suction/Discharge Flange
62	1	SBI1566200		Base Plate
63	1	SBI1046300	SBN1066300	Drain Plug
64	1	SBI0196400	SBN0166400	Air Vent Screw
65	1	SBI0196500	SBN0166500	Plug



CENTRIFUGAL PUMPS

SBI(N)-15

ILLUS. NO.	NO. PER UNIT	SBI PART NO.	SBN PART NO.	DESCRIPTION
66	1	SBI15066E		O-ring (EPDM) A-123
		SBI15066V		O-ring (Viton)
69	4			Hexagon Socket Head Screw (M6)
70	2			Hexagon Socket Head Screw (M8)
71	2			Washer
74	4			Screw (M6x20) 0.37-0.5kW
				Screw (M6x25) 0.75-1.1kW
				Screw (M8x20) 1.5-2.2kW)
				Screw (M8x25) 3-4kW
				Screw (M12x25) 5.5-7.5kW
				Screw (M16x45) 11-15kW
76	3	SBI15076E		O-ring (EPDM)
		SBI15076V		O-ring (Viton)
77	4			Nut and Washer (M16)
79	4			Nut (M12x35) 5.5-7.5kW
				Nut (M16x55) 11-15kW
80	4	SBI1098000E		Locating Buffer(EPDM)
		SBI1068000V		Locating Buffer (Viton)
81	4	SEE STAYBOLT SELECTION CHART		Staybolt
82	3	SBI1098200E		O-ring (EPDM)
		SBI1068200V		O-ring (Viton)
83	1	SBI15083E		O-ring (EPDM)
		SBI15083V		O-ring (Viton)
86	2	SBI1548600	SBN1548600	Retaining ring
92	4			Screw (M12x35) 5.5-7.5kW
				Screw (M16x55) 11-15kW
101	as reqd.	SBI15-K1	SBN15-K1	Diffuser Kit
102	as reqd.	SBI15-K2	SBN15-K2	Diffuser with Bearing Kit
103	as reqd.	SBI15-K3	SBN15-K3	Impeller Kit
104	1	SBI15-K4	SBN15-K4	Inlet Casing Kit

SHAFT SELECTION CHART

MODEL	SBI PART NO.	SBN PART NO.
SBI15-01	SBI159370001	SBN156370001
SBI15-02	SBI159370002	SBN156370002
SBI15-03	SBI159370003	SBN156370003
SBI15-04	SBI159370004	SBN156370004
SBI15-05	SBI159370005	SBN156370005
SBI15-06	SBI159370006	SBN156370006
SBI15-07	SBI159370007	SBN156370007
SBI15-08	SBI159370008	SBN156370008
SBI15-09	SBI159370009	SBN156370009
SBI15-10	SBI159370010	SBN156370010
SBI15-12	SBI159370012	SBN156370012
SBI15-14	SBI159370014	SBN156370014
SBI15-17	SBI159370017	SBN156370017

STRAP SELECTION CHART

MODEL	SBI PART NO.	SBN PART NO.
SBI15-01	SBI154470101	SBN156470001
SBI15-02	SBI154470102	SBN156470002
SBI15-03	SBI154470103	SBN156470003
SBI15-04	SBI154470104	SBN156470004
SBI15-05	SBI154470105	SBN156470005
SBI15-06	SBI154470106	SBN156470006
SBI15-07	SBI154470107	SBN156470007
SBI15-08	SBI154470108	SBN156470008
SBI15-09	SBI154470109	SBN156470009
SBI15-10	SBI154470110	SBN156470010
SBI15-12	SBI154470112	SBN156470012
SBI15-14	SBI154470114	SBN156470014
SBI15-17	SBI154470117	SBN156470017





CENTRIFUGAL PUMPS

SBI(N)-15

PUMP CASING SELECTION CHART

MODEL	SBI PART NO.	SBN PART NO.
SBI15-01	SBI154480001	SBN156480001
SBI15-02	SBI154480002	SBN156480002
SBI15-03	SBI154480003	SBN156480003
SBI15-04	SBI154480004	SBN156480004
SBI15-05	SBI154480005	SBN156480005
SBI15-06	SBI154480006	SBN156480006
SBI15-07	SBI154480007	SBN156480007
SBI15-08	SBI154480008	SBN156480008
SBI15-09	SBI154480009	SBN156480009
SBI15-10	SBI154480010	SBN156480010
SBI15-12	SBI154480012	SBN156480012
SBI15-14	SBI154480014	SBN156480014
SBI15-17	SBI154480017	SBN156480017

ROTATING ELEMENT SELECTION CHART

MODEL	SBI PART NO.	SBN PART NO.
SBI15-01	SBI15-01R	SBN15-01R
SBI15-02	SBI15-02R	SBN15-02R
SBI15-03	SBI15-03R	SBN15-03R
SBI15-04	SBI15-04R	SBN15-04R
SBI15-05	SBI15-05R	SBN15-05R
SBI15-06	SBI15-06R	SBN15-06R
SBI15-07	SBI15-07R	SBN15-07R
SBI15-08	SBI15-08R	SBN15-08R
SBI15-09	SBI15-09R	SBN15-09R
SBI15-10	SBI15-10R	SBN15-10R
SBI15-12	SBI15-12R	SBN15-12R
SBI15-14	SBI15-14R	SBN15-14R
SBI15-17	SBI15-17R	SBN15-17R

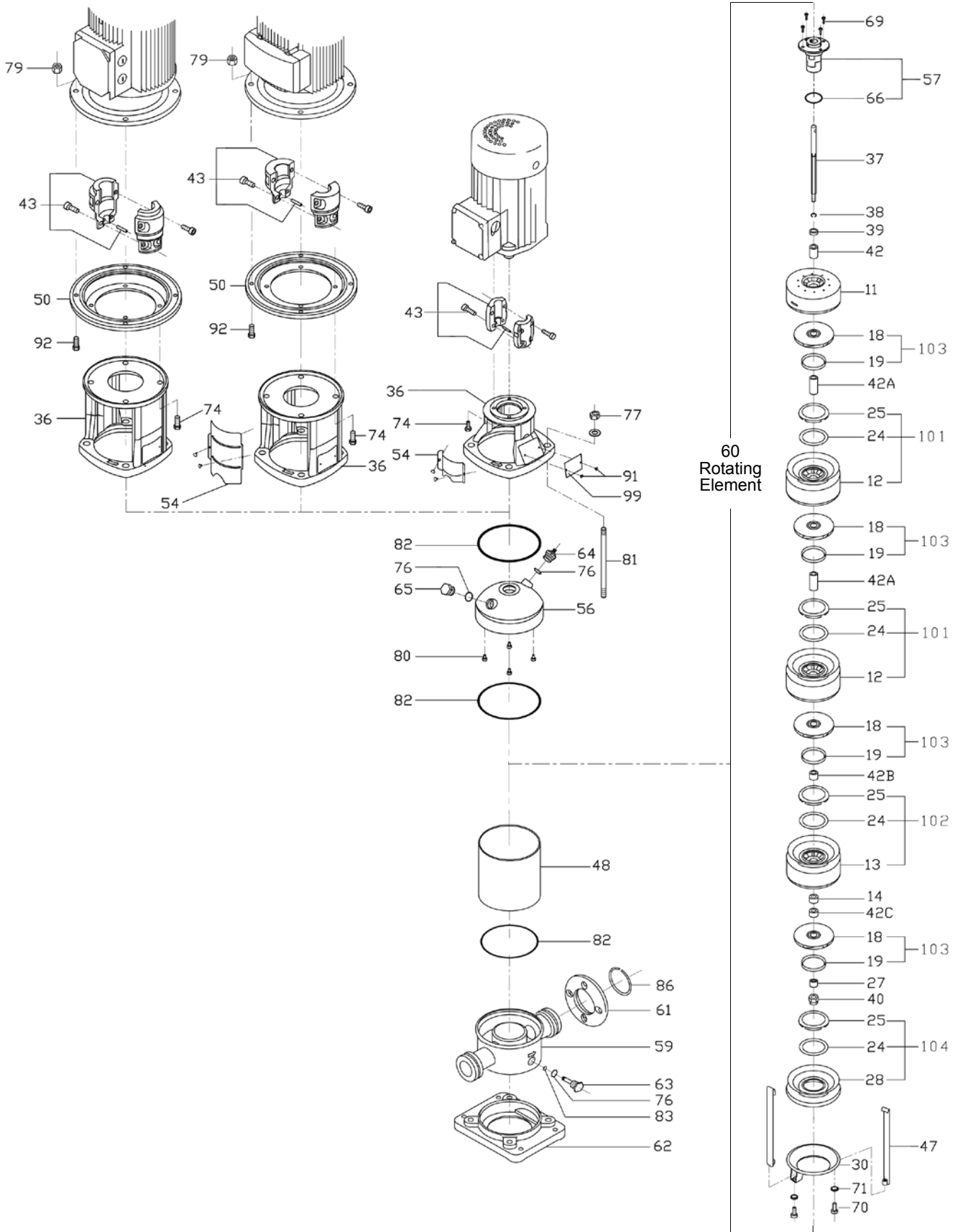
STAYBOLT SELECTION CHART

MODEL	SBI PART NO.	SBN PART NO.
SBI15-01	SBI154810001	SBI154810001
SBI15-02	SBI154810002	SBI154810002
SBI15-03	SBI154810003	SBI154810003
SBI15-04	SBI154810004	SBI154810004
SBI15-05	SBI154810005	SBI154810005
SBI15-06	SBI154810006	SBI154810006
SBI15-07	SBI154810007	SBI154810007
SBI15-08	SBI154810008	SBI154810008
SBI15-09	SBI154810009	SBI154810009
SBI15-10	SBI154810010	SBI154810010
SBI15-12	SBI154810012	SBI154810012
SBI15-14	SBI154810014	SBI154810014
SBI15-17	SBI154810017	SBI154810017



CENTRIFUGAL PUMPS

SBI(N)-20





CENTRIFUGAL PUMPS

SBI(N)-20

ILLUS. NO.	NO. PER UNIT	SBI PART NO.	SBN PART NO.	DESCRIPTION
11	1	SBI1541100	SBN1561100	Outlet Diffuser
12	as reqd.	SBI1541200	SBN1561200	Diffuser
13	as reqd.	SBI1541300	SBN1561300	Diffuser with Bearing
14	as reqd.	SBI1091400		Middle Bearing
18	as reqd.	SBI2041800	SBN2061800	Impeller
19	as reqd.	SBI1541900	SBN1561900	Bush
24	as reqd.	SBI1592400		Neck Ring
25	as reqd.	SBI1542500	SBN1562500	Neck Ring Retainer
27	1	SBI1092700	SBN1062700	Clamp Bush
28	1	SBI1542800	SBN1562800	Inlet Casing
30	1	SBI1093000	SBN1063000	Strap Retainer
36	1	SBI1063600A0 SBI1063600B0 SBI1063600C0 SBI1063600D0 SBI1063600E0 SBI1063600F0		Motor Stool
37	1	SEE PUMP SHAFT SELECTION CHART		Pump Shaft
38	1	SBI1063800		Spring Washer
39	1	SBI1093900(304)	SBN1063900(316)	Clamp Washer
40	1	(304SS)	(316SS)	Lock Nut (M8)
42	1	SBI1594200	SBN1564200	Spacing Bush
42A	1	SBI1594200A0	SBN1564200A0	Spacing Bush
42B	as reqd.	SBI1594200B0	SBN1564200B0	Spacing Bush
42C	1	SBI1594200C0	SBN1564200C0	Spacing Bush
43	1	SBI1094300A0 SBI1094300B0 SBI1094300C0 SBI1094300D0 SBI1094300E0 SBI1094300F0		Coupling Assembly (Ψ14) 0.37-0.55kW Coupling Assembly (Ψ19) 0.75-1.1kW Coupling Assembly (Ψ24) 1.5-2.2kW Coupling Assembly (Ψ28) 3-4kW Coupling Assembly (Ψ38) 5.5-7.5kW Coupling Assembly (Ψ42) 11-15kW
47	2	SEE STRAP SELECTION CHART		Strap
48	1	SEE PUMP CASING SELECTION CHART		Pump Casing
50	1	SBI1095000A0 SBI1095000B0		Adaptor Flange (5.5-7.5kW) Adaptor Flange (11-15kW)
54	2	SBI1045400A0 SBI1045400B0 SBI1045400C0 SBI1045400D0		Coupling Guard (0.37-1.1kW) Coupling Guard (1.5-4kW) Coupling Guard (5.5-7.5kW) Coupling Guard (11-18.5kW)
56	1	SBI1045600	SBN1065600	Pump Top Cap
57	1	SBI1095700	SBN1065700	Mechanical Shaft Seal
59	1	SBI1545900A0	SBN1565900A0	Pump Base
60	1	SEE ROTATING ELEMENT SELECTION CHART		Rotating Element
61	2	SBI1566100		Suction/Discharge Flange
62	1	SBI1566200		Base Plate
63	1	SBI1046300(304)	SBN1066300(316)	Drain Plug
64	1	SBI0196400	SBN0166400	Air Vent Screw
65	1	SBI0196500	SBN0166500	Plug



CENTRIFUGAL PUMPS

SBI(N)-20

ILLUS. NO.	NO. PER UNIT	SBI PART NO.	SBN PART NO.	DESCRIPTION
66	1	SBI15066E		O-ring (EPDM) A-123
		SBI15066V		O-ring (Viton)
69	4			Hexagon Socket Head Screw (M6)
70	2			Hexagon Socket Head Screw (M8)
71	2			Washer
74	4			Screw (M6x20) 0.37-0.5kW
				Screw (M6x25) 0.75-1.1kW
				Screw (M8x20) 1.5-2.2kW
				Screw (M8x25) 3-4kW
				Screw (M12x25) 5.5-7.5kW
				Screw (M16x45) 11-15kW
76	3	SBI15066E		O-ring (EPDM)
		SBI15066V		O-ring (Viton)
77	4			Nut and Washer (M16)
79	4			Nut (M12x35) 5.5-7.5kW
				Nut (M16x55) 11-15kW
80	4	SBI1098000E	SBN1098000E	Locating Buffer(EPDM)
		SBI1068000V	SBN1068000V	Locating Buffer (Viton)
81	4	SEE STAYBOLT SELECTION CHART		Staybolt
82	3	SBI1098200E	SBN1098200E	O-ring (EPDM)
		SBI1068200V	SBN1068200V	O-ring (Viton)
83	1	SBI15083E		O-ring (EPDM)
		SBI15083V		O-ring (Viton)
86	2	SBI1548600		Retaining ring (304SS)
92	4			Screw (M12x35) 5.5-7.5kW
				Screw (M16x55) 11-15kW
101	as reqd.	SBI15-K1	SBN15-K1	Diffuser Kit
102	as reqd.	SBI15-K2	SBN15-K2	Diffuser with Bearing Kit
103	as reqd.	SBI15-K3	SBN15-K3	Impeller Kit
104	1	SBI15-K4	SBN15-K4	Inlet Casing Kit

SHAFT SELECTION CHART

MODEL	SBI PART NO.	SBN PART NO.
SBI20-01	SBI159370001	SBN156370001
SBI20-02	SBI159370002	SBN156370002
SBI20-03	SBI159370003	SBN156370003
SBI20-04	SBI159370004	SBN156370004
SBI20-05	SBI159370005	SBN156370005
SBI20-06	SBI159370006	SBN156370006
SBI20-07	SBI159370007	SBN156370007
SBI20-08	SBI159370008	SBN156370008
SBI20-09	SBI159370009	SBN156370009
SBI20-10	SBI159370010	SBN156370010
SBI20-12	SBI159370012	SBN156370012
SBI20-14	SBI159370014	SBN156370014
SBI20-17	SBI159370017	SBN156370017

STRAP SELECTION CHART

MODEL	SBI PART NO.	SBN PART NO.
SBI20-01	SBI154470101	SBN156470001
SBI20-02	SBI154470102	SBN156470002
SBI20-03	SBI154470103	SBN156470003
SBI20-04	SBI154470104	SBN156470004
SBI20-05	SBI154470105	SBN156470005
SBI20-06	SBI154470106	SBN156470006
SBI20-07	SBI154470107	SBN156470007
SBI20-08	SBI154470108	SBN156470008
SBI20-09	SBI154470109	SBN156470009
SBI20-10	SBI154470110	SBN156470010
SBI20-12	SBI154470112	SBN156470012
SBI20-14	SBI154470114	SBN156470014
SBI20-17	SBI154470117	SBN156470017





CENTRIFUGAL PUMPS

SBI(N)-20

PUMP CASING SELECTION CHART

MODEL	SBI PART NO.	SBN PART NO.
SBI20-01	SBI154480001	SBN156480001
SBI20-02	SBI154480002	SBN156480002
SBI20-03	SBI154480003	SBN156480003
SBI20-04	SBI154480004	SBN156480004
SBI20-05	SBI154480005	SBN156480005
SBI20-06	SBI154480006	SBN156480006
SBI20-07	SBI154480007	SBN156480007
SBI20-08	SBI154480008	SBN156480008
SBI20-09	SBI154480009	SBN156480009
SBI20-10	SBI154480010	SBN156480010
SBI20-12	SBI154480012	SBN156480012
SBI20-14	SBI154480014	SBN156480014
SBI20-17	SBI154480017	SBN156480017

ROTATING ELEMENT SELECTION CHART

MODEL	SBI PART NO.	SBN PART NO.
SBI20-01	SBI20-01R	SBN20-01R
SBI20-02	SBI20-02R	SBN20-02R
SBI20-03	SBI20-03R	SBN20-03R
SBI20-04	SBI20-04R	SBN20-04R
SBI20-05	SBI20-05R	SBN20-05R
SBI20-06	SBI20-06R	SBN20-06R
SBI20-07	SBI20-07R	SBN20-07R
SBI20-08	SBI20-08R	SBN20-08R
SBI20-09	SBI20-09R	SBN20-09R
SBI20-10	SBI20-10R	SBN20-10R
SBI20-12	SBI20-12R	SBN20-12R
SBI20-14	SBI20-14R	SBN20-14R
SBI20-17	SBI20-17R	SBN20-17R

STAYBOLT SELECTION CHART

MODEL	SBI PART NO.	SBN PART NO.
SBI20-01	SBI154810001	SBI154810001
SBI20-02	SBI154810002	SBI154810002
SBI20-03	SBI154810003	SBI154810003
SBI20-04	SBI154810004	SBI154810004
SBI20-05	SBI154810005	SBI154810005
SBI20-06	SBI154810006	SBI154810006
SBI20-07	SBI154810007	SBI154810007
SBI20-08	SBI154810008	SBI154810008
SBI20-09	SBI154810009	SBI154810009
SBI20-10	SBI154810010	SBI154810010
SBI20-12	SBI154810012	SBI154810012
SBI20-14	SBI154810014	SBI154810014
SBI20-17	SBI154810017	SBI154810017