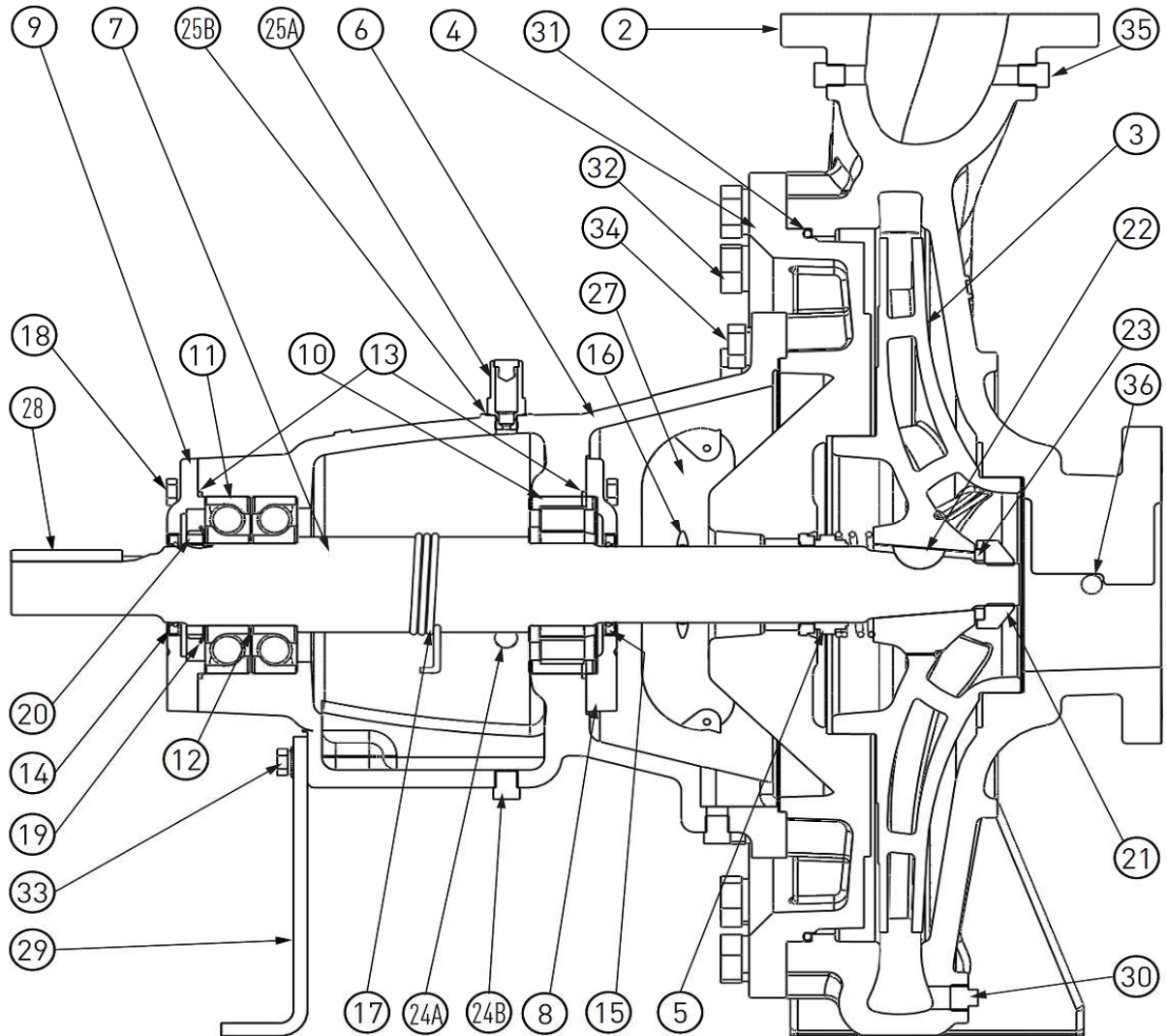


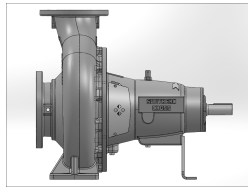
**CENTRIFUGAL PUMP
ISO PRO**



ITEM NO.	DESCRIPTION	ITEM NO.	DESCRIPTION	ITEM NO.	DESCRIPTION
2	Volute Casing	15	Oil Seal - Impeller End	26	Guard Fastener (ns)
3	Impeller	16	Water Slinger	27	Safety Guard
4	Backplate	17	Oil Thrower	28	Pulley Key
5	Mechanical Seal	18	Bearing Cover to Bearing Housing Bolt	29	Support Foot
6	Bearing Housing	19	Lock washer Drive End	30	Volute Drain Plug
7	Pump Shaft	20	Lock Nut Drive End	31	Casing O-ring
8	Bearing Cover Impeller End	21	Impeller Nut	32	Backplate to Casing Bolt
9	Bearing Cover Drive End	22	Impeller Key	33	Support Foot to Bearing Housing Bolt
10	Bearing - Impeller End	23	Impeller Washer Nord-lock	34	Bearing Housing to Backplate Bolt
11	Bearing - Drive End	24A	Bearing Housing Oil Filler	35	Discharge Flange Plug
12	Shim - Bearing	24B	Bearing Housing Drain Plug	36	Inlet Flange Plug
13	O Ring Bearing Cover	25A	Oil Breather	-	Packed Gland (NS)
14	Oil Seal - Drive End	25B	Oil Breather Washer	-	Gland Flushing Plug (NS)

* (NS): Part Not Shown

SECTION 2 PUMPS



**CENTRIFUGAL PUMP
ISO PRO**



No. 1 SHAFT MODULE

Code:
Model:

	PREA1 50x32-160	PREB1 65x50-160	PREC1 80x65-160	PRFA1 50x32-200	PRFB1 65x40-200	PRFC1 80x50-200
Illus No.	Part no.	Part no.	Part no.	Part no.	Part no.	Part no.

Wet End

Illus No.	Description	Material	Part no.	Part no.	Part no.	Part no.	Part no.	Part no.
29	Support Foot	Mild Steel	SEA808	SEA808	SEC808	SEC808	SEC808	SEC808
30	Volute Drain Plug	Zinc Plated 1/4"	489069004	489069004	489069004	489069004	489069004	489069004
30	Volute Drain Plug	316SS 1/4"	489069204	489069204	489069204	489069204	489069204	489069204
31	Casing O-ring	Viton Rubber	383007041	383007041	383007041	383007048	383007048	383007048
32	Backplate to Casing Bolt	H/T Steel	N/A	N/A	N/A	406102460	406102460	406102460
32	Brg Hsg to Backplate Bolt	H/T Steel	N/A	N/A	N/A	406102510	406102510	406102510
33	Support Foot to Brg Hsg Bolt	H/T Steel	406102460	406102460	406102460	406102460	406102460	406102460
34	Brg Hsg to Casing Bolt	H/T Steel	387144045	387144045	387144045	N/A	N/A	N/A
35	Discharge Flange Plug	Mild Steel - Zinc Plated 1/8"	489069002	489069002	489069002	489069002	489069002	489069002
35	Discharge Flange Plug	316SS 1/8"	489069202	489069202	489069202	489069202	489069202	489069202
36	Inlet Flange Plug	Mild Steel - Zinc Plated 1/8"	489069002	489069002	489069002	489069002	489069002	489069002
36	Inlet Flange Plug	316SS 1/8"	489069202	489069202	489069202	489069202	489069202	489069202

Optional Wear Rings

A	Wear Ring - Backplate	ZF Bronze	SEA027	SEA027	SEA027	SEC027	SEC027	SEC027
A	Wear Ring - Backplate	316SS	SEA327	SEA327	SEA327	SEC327	SEC327	SEC327
B	Wear Ring - Impeller Rear	ZF Bronze	SEA026	SEA026	SEA026	SEC026	SEC026	SEC026
B	Wear Ring - Impeller Rear	316SS	SEA326	SEA326	SEA326	SEC326	SEC326	SEC326
C	Wear Ring - Impeller Front	ZF Bronze	SEA026	SEA026	SEA026	SEC026	SEC026	SEC026
C	Wear Ring - Impeller Front	316SS	SEA326	SEA326	SEA326	SEC326	SEC326	SEC326
D	Wear Ring - Volute Casing	ZF Bronze	SEA027	SEA027	SEA027	SEC027	SEC027	SEC027
D	Wear Ring - Volute Casing	316SS	SEA327	SEA327	SEA327	SEC327	SEC327	SEC327

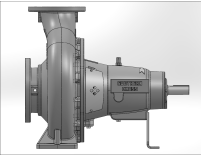
Optional Packed Gland

4	Backplate - Packed Gland	Cast Iron	SEA011	SEA011	SEA011	SFA011	SFA011	SFA011
4	Backplate - Packed Gland	ZF Bronze	SEA051	SEA051	SEA051	SFA051	SFA051	SFA051
4	Backplate - Packed Gland	316ss	SEA061	SEA061	SEA061	SFA061	SFA061	SFA061
-	Packed Gland Kit		PSEA65	PSEA65	PSEA65	PSEA65	PSEA65	PSEA65
-	Shaft Sleeve Kit		PSEA60	PSEA60	PSEA60	PSEA60	PSEA60	PSEA60
-	Packing Ring Set (5)		SEA023	SEA023	SEA023	SEA023	SEA023	SEA023

Overhaul Kits

-	Mechanical Seal & O-Ring Kit		PRO1900	PRO1900	PRO1900	PRO1901	PRO1901	PRO1901
-	Seal & Bearing Kit		PRO1902MKII	PRO1902MKII	PRO1902MKII	PRO1903MKII	PRO1903MKII	PRO1903MKII

SECTION 2 PUMPS



**CENTRIFUGAL PUMP
ISO PRO**



Code:	PRED2	PRFD2	PRFE2	PRFF2	PRGB2	PRGC2	PRGD2	PRGE2	PRHB2	PRHC2
Model:	100x80-160	100x65-200	125x80-200	125x100-200	65x40-250	80x50-250	100x65-250	125x80-250	65x40-315	80x50-315

No. 2 SHAFT MODULE

Illus No.	Description	Material	Part no.	Part no.	Part no.	Part no.	Part no.	Part no.	Part no.	Part no.	Part no.	Part no.
-----------	-------------	----------	----------	----------	----------	----------	----------	----------	----------	----------	----------	----------

Wet End

29	Support Foot	Mild Steel	SED808	SFD808	SFD808	SFF808	SFD808	SFD808	SFF808	SHC808	SFF808	SHC808
30	Volute Drain Plug	Mild Steel - Zinc Plated 1/4"	489069004	489069004	489069006	489069006	489069004	489069004	489069004	489069004	489069002	489069004
30	Volute Drain Plug	316SS 1/4"	489069204	489069204	489069206	489069206	489069204	489069204	489069204	489069204	489069202	489069204
31	Casing O-ring	Viton Rubber	383007048	383007048	383007048	383007048	383007276	383007276	383007276	383007276	383007279	383007279
32	Backplate to Casing Bolt	H/T Steel	N/A	N/A	N/A	N/A	406102510	406102510	406102510	406102510	406102511	406102511
32	Brg Hsg to Backplate Bolt	H/T Steel	N/A	N/A	N/A	N/A	406102510	406102510	406102510	406102510	406102511	406102511
33	Support Foot to Brg Hsg Bolt	H/T Steel	406102510	406102510	406102510	406102510	406102510	406102510	406102510	406102510	406102510	406102510
34	Brg Hsg to Casing Bolt	H/T Steel	387146040	387146040	387146040	387146040	N/A	N/A	N/A	N/A	N/A	N/A
35	Discharge Flange Plug	Mild Steel - Zinc Plated 1/4"	489069004	489069002	489069004	489069004	489069002	489069002	489069002	489069004	489069002	489069002
35	Discharge Flange Plug	316ss 1/4"	489069204	489069202	489069204	489069204	489069202	489069202	489069202	489069204	489069202	489069202
36	Inlet Flange Plug	Mild Steel - Zinc Plated 1/4"	489069004	489069002	489069004	489069004	489069002	489069002	489069002	489069004	489069002	489069002
36	Inlet Flange Plug	316ss 1/4"	489069204	489069202	489069204	489069204	489069202	489069202	489069202	489069204	489069202	489069202

Optional Wear Rings

A	Wear Ring - Backplate	ZF Bronze	SED027	SED027	SFF027	SFF027	SGB027	SGB027	SED027	SED027	SGB027	SGB027
A	Wear Ring - Backplate	316SS	SED327	SED327	SFF327	SFF327	SGB327	SGB327	SED327	SED327	SGB327	SGB327
B	Wear Ring - Impeller Rear	ZF Bronze	SED026	SED026	SFF026	SFF026	SGB026	SGB026	SED026	SED026	SGB026	SGB026
B	Wear Ring - Impeller Rear	316SS	SED326	SED326	SFF326	SFF326	SGB326	SGB326	SED326	SED326	SGB326	SGB326
C	Wear Ring - Impeller Front	ZF Bronze	SED026	SED026	SFF026	SFF026	SGB026	SGB026	SED026	SFF026	SEC026	SGB026
C	Wear Ring - Impeller Front	316SS	SED326	SED326	SFF326	SFF326	SGB326	SGB326	SED326	SFF326	SEC326	SGB326
D	Wear Ring - Volute Casing	ZF Bronze	SED027	SED027	SFF027	SFF027	SGB027	SGB027	SED027	SFF027	SEC027	SGB027
D	Wear Ring - Volute Casing	316SS	SED327	SED327	SFF327	SFF327	SGB327	SGB327	SED327	SFF327	SEC327	SGB327

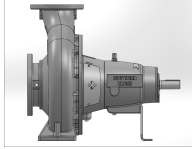
Optional Packed Gland

4	Backplate - Packed Gland	Cast Iron	SED011	SFD011	SFF011	SFF011	SGB011	SGB011	SGD011	SGD011	SHB011	SHB011
4	Backplate - Packed Gland	ZF Bronze	SED051	SFD051	SFF051	SFF051	SGB051	SGB051	SGD051	SGD051	SHB051	SHB051
4	Backplate - Packed Gland	316ss	SED061	SFD061	SFF061	SFF061	SGB061	SGB061	SGD061	SGD061	SHB061	SHB061
-	Packed Gland Kit		PSED65	PSED65	PSED65	PSED65	PSED65	PSED65	PSED65	PSED65	PSED65	PSED65
-	Shaft Sleeve Kit		PSED60	PSED60	PSED60	PSED60	PSED60	PSED60	PSED60	PSED60	PSED60	PSED60
-	Packing Ring Set (5)		SED023	SED023	SED023	SED023	SED023	SED023	SED023	SED023	SED023	SED023

Overhaul Kits

-	Mechanical Seal & O-Ring Kit		PRO2900	PRO2900	PRO2900	PRO2900	PRO2901	PRO2901	PRO2901	PRO2901	PRO2902	PRO2902
-	Seal & Bearing Kit		PRO2903MKII	PRO2903MKII	PRO2903MKII	PRO2903MKII	PRO2904MKII	PRO2904MKII	PRO2904MKII	PRO2904MKII	PRO2905MKII	PRO2905MKII

SECTION 2 PUMPS



**CENTRIFUGAL PUMP
ISO PRO**



No. 3 SHAFT MODULE

Code:	PRGF3	PRGG3	PRHD3	PRHE3	PRHF3	PRHG3	PRJE3	PRJF3	PRJG3
Model:	125x100-250	150x125-250A	100x65-315	125x80-315	125x100-315	150x125-315	125x80-400	125x100-400	150x125-400

WET END

29	Support Foot	Mild Steel	SGF808	SGG808	SGF808	SGG808	SGG808	SHG808	SHG808	SHG808	SJG808
30	Volute Drain Plug	Mild Steel - Zinc Plated 1/4"	489069004	489069006	489069004	489069004	489069006	489069006	489069006	489069006	489069006
30	Volute Drain Plug	316SS 1/4"	489069204	489069206	489069204	489069204	489069206	489069206	489069206	489069206	489069206
31	Casing O-ring	Viton Rubber	383007279	383007279	383007279	383007279	383007279	383007279	383007283	383007283	383007283
32	Backplate to Casing Bolt	H/T Steel	N/A	N/A	N/A	N/A	N/A	N/A	406102561	406102561	406102561
32	Brg Hsg to Backplate Bolt	H/T Steel	N/A	N/A	N/A	N/A	N/A	N/A	406102511	406102511	406102511
33	Support Foot to Brg Hsg Bolt	H/T Steel	406102561	406102561	406102561	406102561	406102561	406102561	406102511	406102511	406102511
34	Brg Hsg to Casing Bolt	H/T Steel	387146045	387146045	387146045	387146045	387146045	387146045	N/A	N/A	N/A
35	Discharge Flange Plug	Mild Steel - Zinc Plated 1/4"	489069004	489069004	489069002	489069004	489069004	489069004	489069004	489069004	489069004
35	Discharge Flange Plug	316ss 1/4"	489069204	489069204	489069202	489069204	489069204	489069204	489069204	489069204	489069204
36	Inlet Flange Plug	Mild Steel - Zinc Plated 1/4"	489069004	489069004	489069002	489069004	489069004	489069004	489069004	489069004	489069004
36	Inlet Flange Plug	316ss 1/4"	489069204	489069204	489069202	489069204	489069204	489069204	489069204	489069204	489069204

Optional Wear Rings

A	Wear Ring - Backplate	ZF Bronze	SGF027	SGF027	SFF027	SFF027	SFF027	SGF027	SGF027	SGF027	SGF027
A	Wear Ring - Backplate	316SS	SGF327	SGF327	SFF327	SFF327	SFF327	SGF327	SGF327	SGF327	SGF327
B	Wear Ring - Impeller Rear	ZF Bronze	SGF026	SGF026	SFF026	SFF026	SFF026	SGF026	SGF026	SGF026	SGF026
B	Wear Ring - Impeller Rear	316SS	SGF326	SGF326	SFF326	SFF326	SFF326	SGF326	SGF326	SGF326	SGF326
C	Wear Ring - Impeller Front	ZF Bronze	SGF026	SGF026	SFF026	SFF026	SFF026	SGF026	SGF026	SGF026	SGF026
C	Wear Ring - Impeller Front	316SS	SGF326	SGF326	SFF326	SFF326	SFF326	SGF326	SGF326	SGF326	SGF326
D	Wear Ring - Volute Casing	ZF Bronze	SGF027	SGF027	SFF027	SFF027	SFF027	SGF027	SGF027	SGF027	SGF027
D	Wear Ring - Volute Casing	316SS	SGF327	SGF327	SFF327	SFF327	SFF327	SGF327	SGF327	SGF327	SGF327

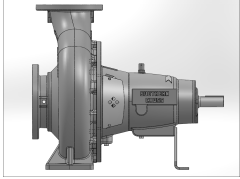
Optional Packed Gland

4	Backplate - Packed Gland	Cast Iron	SGF011	SGF011	SHD011	SHD011	SHD011	SHG011	SJE011	SJE011	SJE011
4	Backplate - Packed Gland	ZF Bronze	SGF051	SGF051	SHD051	SHD051	SHD051	SHG051	SJE051	SJE051	SJE051
4	Backplate - Packed Gland	316ss	SGF061	SGF061	SHD061	SHD061	SHD061	SHG061	SJE061	SJE061	SJE061
-	Packed Gland Kit		PSGF65	PSGF65	PSGF65	PSGF65	PSGF65	PRHG65	PRHG65	PRHG65	PRHG65
-	Shaft Sleeve Kit		PSGF60	PSGF60	PSGF60	PSGF60	PSGF60	PSHG60	PSHG60	PSHG60	PSHG60
-	Packing Ring Set (5)		SGF023	SGF023	SGF023	SGF023	SGF023	SGF023	SGF023	SGF023	SGF023

Overhaul Kits

-	Mechanical Seal & O-Ring Kit		PRO3900	PRO3900	PRO3900	PRO3900	PRO3900	PRO3900	PRO3901	PRO3901	PRO3901
-	Seal & Bearing Kit		PRO3902MKII	PRO3902MKII	PRO3902MKII	PRO3902MKII	PRO3902MKII	PRO3902MKII	PRO3903MKII	PRO3903MKII	PRO3903MKII

SECTION 2 PUMPS



**CENTRIFUGAL PUMP
ISO PRO**



REAR NECK RING IMPELLER
STANDARD

No. 4 SHAFT MODULE

Code:	PRHH4 RNR	PRHJ4 RNR	PRJH4 RNR	PRKF4 RNR	PRKG4 RNR	PRKH4 RNR
Model:	250x150-315	250x200-315	200x150-400	125x100-500	150x125-500	200x150-500

WET END

29	Support Foot	Mild Steel	SHH808	SHH808	SHH808	SJJ808	SJJ808	SJK808
30	Volute Drain Plug	Galv mal 1/2"	489069008	489069008	489069008	489069008	489069008	489069008
30	Volute Drain Plug	316SS 1/2"						
31	Casing O-ring	Viton Rubber	383007455	383007455	383007463	383007470	383007470	383007470
32	Backplate to Casing Bolt	H/T Steel	N/A	N/A	387158050	387158050	387158050	387158050
32	Brg Hsg to Backplate Bolt	H/T Steel	N/A	N/A	387154050	387154050	387154050	387154050
33	Support Foot to Brg Hsg Bolt	H/T Steel	387148035	387148035	387148035	387148035	387148035	387148035
34	Brg Hsg to Casing Bolt	H/T Steel	387154050	387154050	N/A			N/A
35	Discharge Flange Plug	Mild Steel - Zinc Plated 3/8"	489069006	489069006	489069006	489069002	489069006	489069006
35	Discharge Flange Plug	316SS 3/8"	489069206	489069206	489069206	489069202	489069206	489069206
36	Inlet Flange Plug	Mild Steel - Zinc Plated 3/8"	489069006	489069006	489069006	489069002	489069006	489069006
36	Inlet Flange Plug	316SS 3/8"	489069206	489069206	489069206	489069202	489069206	489069206

Optional Wear Rings

A	Wear Ring - Backplate	ZF Bronze	SHJ027	SHJ027	SHH027	SHH027	SHH027	SHH027
A	Wear Ring - Backplate	316SS	SHJ327	SHJ327	SHH327	SHH327	SHH327	SHH327
B	Wear Ring - Impeller Rear	ZF Bronze	SHJ026	SHJ026	SHH026	SHH026	SHH026	SHH026
B	Wear Ring - Impeller Rear	316SS	SHJ326	SHJ326	SHH326	SHH326	SHH326	SHH326
C	Wear Ring - Impeller Front	ZF Bronze	SHH026	SHJ026	SHH026	SKF026	SKG026	SHH026
C	Wear Ring - Impeller Front	316SS	SHH326	SHJ326	SHH326	SKF326	SKG326	SHH326
D	Wear Ring - Volute Casing	ZF Bronze	SHH027	SHJ027	SHH027	SKF027	SKG027	SHH027
D	Wear Ring - Volute Casing	316SS	SHH327	SHJ327	SHH327	SKF327	SKG327	SHH327

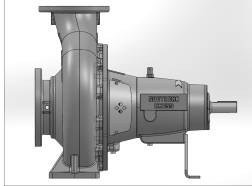
Optional Packed Gland

4	Backplate - Packed Gland	Cast Iron	SHH011C	SHH011C	SJH011C	SKF011C	SKF011C	SKF011C
4	Backplate - Packed Gland	ZF Bronze	SHH051C	SHH051C	SJH051C	SKF051C	SKF051C	SKF051C
4	Backplate - Packed Gland	316ss	SHH061C	SHH061C	SJH061C	SKF061C	SKF061C	SKF061C
-	Packed Gland Kit		PSHH65	PSHH65	PSHH65	PSHH65	PSHH65	PSHH65
-	Shaft Sleeve Kit		PSHH60	PSHH60	PSHH60	PSHH60	PSHH60	PSHH60
-	Packing Ring Set (5)		SHH023	SHH023	SHH023	SHH023	SHH023	SHH023

Overhaul Kits

-	Mechanical Seal & O-Ring Kit		PRO4900	PRO4900	PRO4902	PRO4901	PRO4901	PRO4901
-	Seal & Bearing Kit		PRO4903MKII	PRO4903MKII	PRO4905MKII	PRO4904MKII	PRO4904MKII	PRO4904MKII

SECTION 2 PUMPS



**CENTRIFUGAL PUMP
ISO PRO**



REAR PUMP OUT VANE MODEL DISCONTINUED

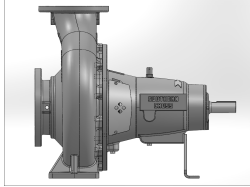
No. 4 SHAFT MODULE

Code:	PRHH4 OLD	PRHJ4 OLD	PRJH4 OLD	PRKF4 OLD	PRKG4 OLD	PRKH4 OLD		
Model:	250x150-315	250x200-315	200x150-400	125x100-500	150x125-500	200x150-500		
Illus No.	Description	Material	Part no.	Part no.	Part no.	Part no.		
2	Volute Casing - Table E	Cast Iron	SHH002B	SHJ002B	SJH002B	SKF002B	SKG002B	SKH002B
2	Volute Casing - Table E	ZF Bronze	SHH052	SHJ052	SJH052	SKF052	SKG052	SKH052
2	Volute Casing - Table E	316ss	SHH062	SHJ062	SJH062	SKF062	SKG062	SKH062
3	Impeller	Cast Iron	SHH003	SHJ003	SJH003	SKF003	SKG003	SKH003
3	Impeller	ZF Bronze	SHH053	SHJ053	SJH053	SKF053	SKG053	SKH053
3	Impeller	316ss	SHH063	SHJ063	SJH063	SKF063	SKG063	SKH063
4	Backplate - Mech Seal	Cast Iron	SHH004B	SHH004B	SJH004B	SKF004B	SKF004B	SKF004B
4	Backplate - Mech Seal	ZF Bronze	SHH054	SHH054	SJH054	SKF054	SKF054	SKF054
4	Backplate - Mech Seal	316ss	SHH064	SHH064	SJH064	SKF064	SKF064	SKF064
5	Mechanical Seal	60mm Carbon / Ceramic / Viton	XMS060V	XMS060V	XMS060V	XMS060V	XMS060V	XMS060V
5	Mechanical Seal	60mm Silicon Carbide / Silicon Carbide / Nitrile	XMS160	XMS160	XMS160	XMS160	XMS160	XMS160

Group 4 Bearing Housing Assembly MK2

6	Bearing Housing	Cast Iron	SHH801B	SHH801B	SHH801B	SHH801B	SHH801B	SHH801B
7	Pump Shaft	431ss	SHH1115	SHH1115	SHH1115	SHH1115	SHH1115	SHH1115
7	Pump Shaft	316ss	SHH1015	SHH1015	SHH1015	SHH1015	SHH1015	SHH1015
8	Bearing Cover Impeller End	Cast Iron	SHH107	SHH107	SHH107	SHH107	SHH107	SHH107
9	Bearing Cover Drive End	Cast Iron	SHH108	SHH108	SHH108	SHH108	SHH108	SHH108
10	Bearing - Impeller End	Bearing Cylindrical Roller	NJ2313ECP	NJ2313ECP	NJ2313ECP	NJ2313ECP	NJ2313ECP	NJ2313ECP
11	Bearing - Drive End x 2	Bearing Angular Contact	7313BECBP	7313BECBP	7313BECBP	7313BECBP	7313BECBP	7313BECBP
12	Shim - Bearing	Brass	SHH116	SHH116	SHH116	SHH116	SHH116	SHH116
13	Oring - Bearing Cover	O-RING BS254 VITON	383007032	383007032	383007032	383007032	383007032	383007032
14	Dust Seal - Impeller End	Oil Seal 60.080.08TC	06.08.08TC	06.08.08TC	06.08.08TC	06.08.08TC	06.08.08TC	06.08.08TC
15	Dust Seal - Drive End	Oil Seal 60.080.08TC	06.08.08TC	06.08.08TC	06.08.08TC	06.08.08TC	06.08.08TC	06.08.08TC
16	Water Slinger	Nitrile rubber	NHG011	NHG011	NHG011	NHG011	NHG011	NHG011
17	Oil Thrower	Spring Steel	SGF322	SGF322	SGF322	SGF322	SGF322	SGF322
18	Brg Cover to Brg Hsg Bolt x12	H/T Steel	406102561	406102561	406102561	406102561	406102561	406102561
-	Spring washer	Zinc Plated Steel	413136712	413136712	413136712	413136712	413136712	413136712
19	Lock washer Drive End	M65 Lock Washer MB13	MB13	MB13	MB13	MB13	MB13	MB13
20	Lock Nut Drive End	M55 Lock Nut KM13	KM13	KM13	KM13	KM13	KM13	KM13
21	Impeller Nut	316ss	SKH046B	SKH046B	SKH046B	SKH046B	SKH046B	SKH046B
22	Impeller Key	316ss	SHH323	SHH323	SHH323	SHH323	SHH323	SHH323
23	Impeller Washer Nord-Lock	316ss	SHH007B	SHH007B	SHH007B	SHH007B	SHH007B	SHH007B
24A	Bearing Housing Oil Filler	Mild Steel - Zinc Plated 1/4"	489069004	489069004	489069004	489069004	489069004	489069004
24B	Bearing Housing Drain Plug	Mild Steel - Zinc Plated 3/8"	489069206	489069206	489069206	489069206	489069206	489069206
25A	Oil Breather	Zinc Plated Steel	NFA050	NFA050	NFA050	NFA050	NFA050	NFA050
25B	Oil Breather Washer	Aluminium	EFE156	EFE156	EFE156	EFE156	EFE156	EFE156
26	Guard Fastener Socket HD Screw	Capscrew SKT Head M6 x 10 ZP	408510408	408510408	408510408	408510408	408510408	408510408
27	Safety Guard x2	316 SS	SHH313	SHH313	SHH313	SHH313	SHH313	SHH313
28	Pulley Key	Key Steel	SHH102	SHH102	SKH102B	SHH102	SHH102	SHH102

SECTION 2 PUMPS



**CENTRIFUGAL PUMP
ISO PRO**



REAR PUMP OUT VANE MODEL DISCONTINUED

No. 4 SHAFT MODULE

Code:	PRHH4 OLD	PRHJ4 OLD	PRJH4 OLD	PRKF4 OLD	PRKG4 OLD	PRKH4 OLD
Model:	250x150-315	250x200-315	200x150-400	125x100-500	150x125-500	200x150-500

WET END

29	Support Foot	Mild Steel	SHH808	SHH808	SHH808	SJJ808	SJJ808	SJK808
30	Volute Drain Plug	Galv mal 1/2"	489069008	489069008	489069008	489069008	489069008	489069008
30	Volute Drain Plug	316SS 1/2"						
31	Casing O-ring	Viton Rubber	383007455	383007455	383007463	383007470	383007470	383007470
32	Backplate to Casing Bolt	H/T Steel	N/A	N/A	387158050	387158050	387158050	387158050
32	Brg Hsg to Backplate Bolt	H/T Steel	N/A	N/A	387154050	387154050	387154050	387154050
33	Support Foot to Brg Hsg Bolt	H/T Steel	387148035	387148035	387148035	387148035	387148035	387148035
34	Brg Hsg to Casing Bolt	H/T Steel	387154050	387154050	N/A			N/A
35	Discharge Flange Plug	Mild Steel - Zinc Plated 3/8"	489069006	489069006	489069006	489069002	489069006	489069006
35	Discharge Flange Plug	316SS 3/8"	489069206	489069206	489069206	489069202	489069206	489069206
36	Inlet Flange Plug	Mild Steel - Zinc Plated 3/8"	489069006	489069006	489069006	489069002	489069006	489069006
36	Inlet Flange Plug	316SS 3/8"	489069206	489069206	489069206	489069202	489069206	489069206

Optional Wear Rings

A	Wear Ring - Backplate	ZF Bronze	N/A	N/A	N/A	N/A	N/A	N/A
A	Wear Ring - Backplate	316SS	N/A	N/A	N/A	N/A	N/A	N/A
B	Wear Ring - Impeller Rear	ZF Bronze	N/A	N/A	N/A	N/A	N/A	N/A
B	Wear Ring - Impeller Rear	316SS	N/A	N/A	N/A	N/A	N/A	N/A
C	Wear Ring - Impeller Front	ZF Bronze	N/A	N/A	N/A	N/A	N/A	N/A
C	Wear Ring - Impeller Front	316SS	N/A	N/A	N/A	N/A	N/A	N/A
D	Wear Ring - Volute Casing	ZF Bronze	SHH027	SHJ027	SHH027	SKF027	SKG027	SHH027
D	Wear Ring - Volute Casing	316SS	SHH327	SHJ327	SHH327	SKF327	SKG327	SHH327

Optional Packed Gland

4	Backplate - Packed Gland	Cast Iron	SHH011	SHH011	SJH011	SKF011	SKF011	SKF011
4	Backplate - Packed Gland	ZF Bronze	SHH051	SHH051	SJH051	SKF051	SKF051	SKF051
4	Backplate - Packed Gland	316ss	SHH061	SHH061	SJH061	SKF061	SKF061	SKF061
-	Packed Gland Kit		PSHH65	PSHH65	PSHH65	PSHH65	PSHH65	PSHH65
-	Shaft Sleeve Kit		PSHH60	PSHH60	PSHH60	PSHH60	PSHH60	PSHH60
-	Packing Ring Set (5)		SHH023	SHH023	SHH023	SHH023	SHH023	SHH023

Overhaul Kits

-	Mechanical Seal & O-Ring Kit	PRO4900	PRO4900	PRO4902	PRO4901	PRO4901	PRO4901
-	Seal & Bearing Kit	PRO4903MKII	PRO4903MKII	PRO4905MKII	PRO4904MKII	PRO4904MKII	PRO4904MKII