

## 500 SERIES

### MOULDED JET FARMMASTER PUMP JET ASSISTED PRESSURE PUMP



#### FEATURES

- Industrial grade corrosion resistant thermoplastic.
- No moving parts down bore.
- Built-in check valve.
- Shallow well lifts to 7.6m.
- Manual or automatic system.
- Max. head - 41m.
- Max. flow - 118lpm.



#### APPLICATIONS

- Domestic, industrial or rural pressure pump for use as a manual or an automatic pressure system.
- Stock watering, irrigation and water transfer.
- Option of a large range of water sources including tanks, bores, dams, creeks and rivers.

#### PUMP INFORMATION

Horizontal, single-stage, surface mounted centrifugal pump. Jet and venturi assisted performance with closed impeller for pumping debris free water. Noryl pump casing with 1¼" BSP (male) inlet and ¾" BSP (female) outlet.

#### OPERATING CONDITIONS

Suitable for pumping clean non-aggressive liquids without solids or fibres in suspension.

Fluid:	Water
Maximum water temperature:	55°C
Manimum water temperature:	1°C
Maximum ambient temperature:	40°C

## 500 Series - Technical Data

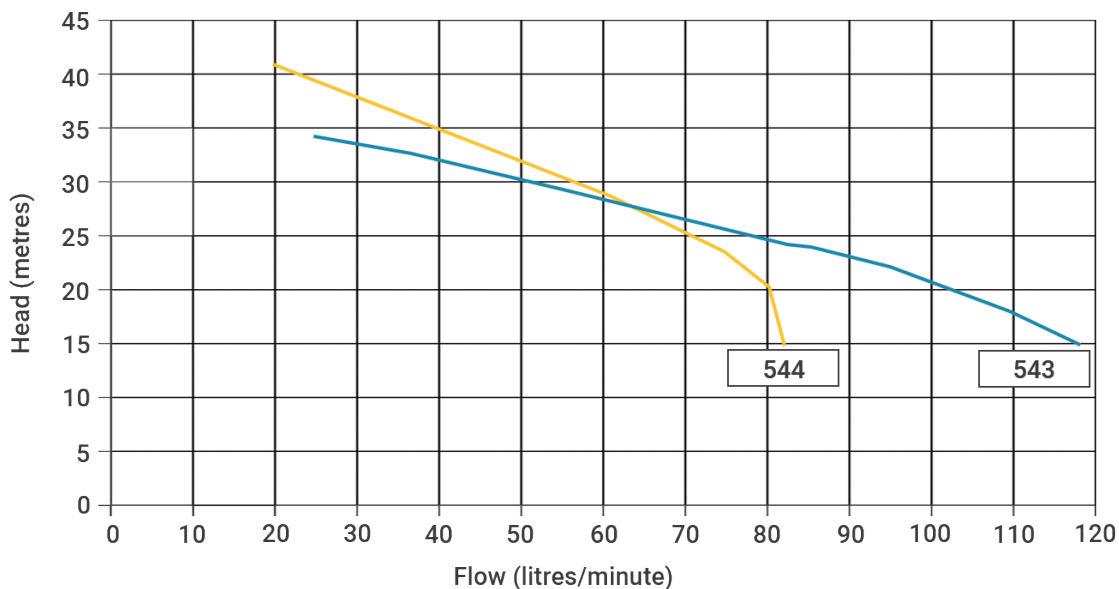
### ELECTRICAL DATA

Type	Type of current	Voltage ± 10%	Frequency Hz	Motor rating kW		Nominal RPM	Current Aampere	Locked rotor current	Motor protection	Insulation class	IP rating
				P1	P2						
543	1-Phase	230	50	1.4	1.1	2900	6.4 A	42 A	Auto	B	44
544	1-Phase	230	50	1.4	1.1	2900	6.3 A	42 A	Auto	B	44

### PERFORMANCE

Type	Pressure Swith Setting (kPa)	Suction Depth (m)	Total head in metres					Maximum Pump Pressure (kPa)
			15	21	27	34	40	
			Capacity (litres per minute)					
543	210-350	0	117	105	65	28		390
		3	94	84	52	22		360
		6	67	60	37	16		330
		7.6	47	42	26	11		315
544	280-420	0	82	81	67	42	22	475
		3	66	65	54	34	18	445
		6	47	46	38	24	13	415
		7.6	33	32	27	17	9	400

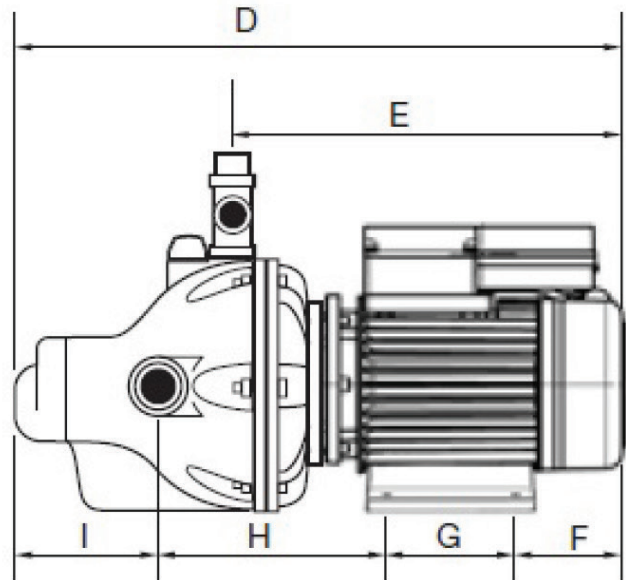
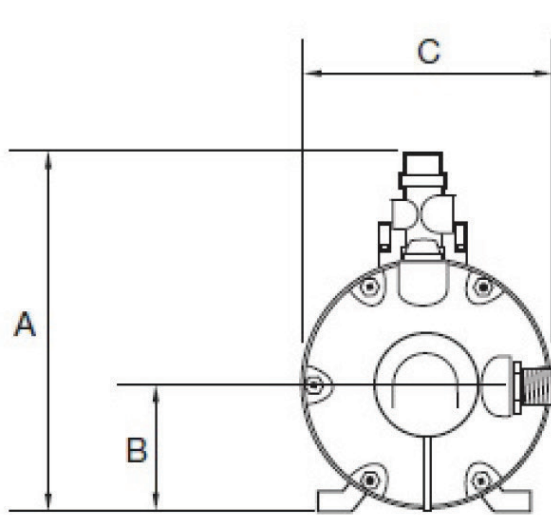
### PERFORMANCE CURVE



## 500 Series- Technical Data

### DIMENSIONS

Type	Maximum L x W x H	Weight approx	Inlet	Pump outlet	Pressure kit outlet	Carton L x W x H	Packed weight
543/544	530 x 230 x 290 mm	25 kg	1 1/4" BSP (male)	3/4" BSP (female)	1" BSP (female)	590 x 300 x 330 mm	27 kg



Type	A	B	C	D	E	F	G	H	I
543/544	290	100	230	530	330	110	110	205	115

### PUMP CONSTRUCTION MATERIALS

Component	Material
Pump casing	Noryl
End Sheild	Cast Iron
Baffle	Noryl
Priming/Drain plug	Acetal
Impeller	Polycarb 20% glass filled
Diffuser	Noryl
Shaft Sleeve	Nylon
Motor Shaft	Mild Steel
O-Ring's	Nitril
Mechanical Seal	Carbon / Ceramic